

HARVARD UNIVERSITY
FACT BOOK
2002-2003

Published by the
Office of Budgets,
Financial Planning and
Institutional Research

ORGANIZATION	Pages
Central Administration	2
Faculties and Allied Institutions	3
Research and Academic Centers	4 - 5
PEOPLE	
Degree Student Enrollment	6 - 9
Degrees Conferred	10 - 13
International Students	14 - 15
Non-Degree Students and Fellowship Programs	16 - 17
Faculty Counts	18 - 19
Staff Counts	20 - 21
RESOURCES	
Tuition, Fees, and Financial Aid	23 - 26
Sponsored Research	27 - 31
Library	32 - 33
FY2002 Income and Expense	35 - 37
Physical Plant	38 - 39
Endowment	40 - 41

The Harvard University Fact Book is published by:
Office of Budgets, Financial Planning and Institutional Research
Holyoke Center 780, Cambridge, MA 02138

The address for the electronic version is:

<http://vpf-web.harvard.edu/factbook/>

If you would like more information about data contained in the Fact Book, contact:

RUTH LOESCHER, Institutional Research Coordinator

(617) 496-3568, E-mail: ruth_loescher@harvard.edu

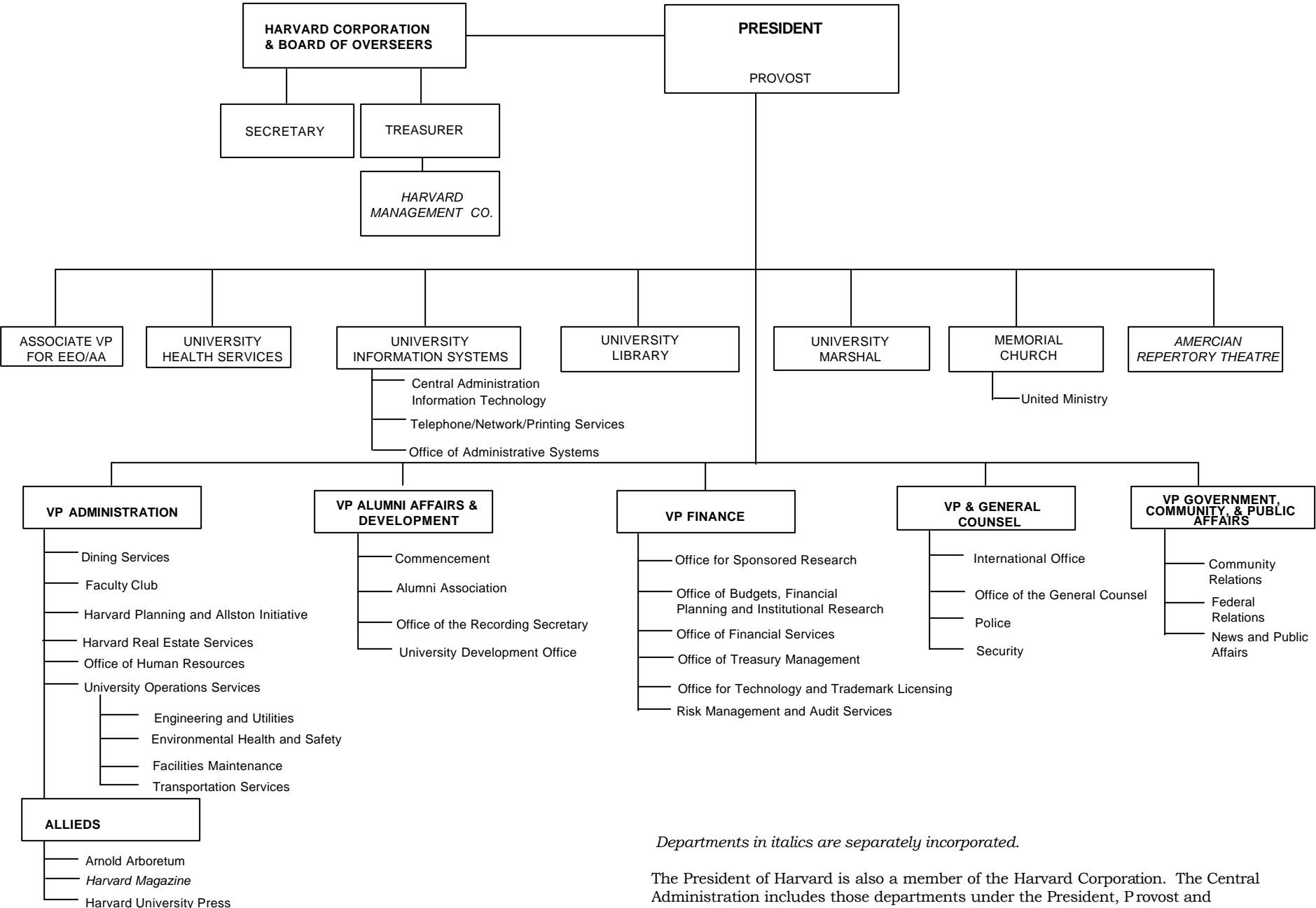
ANN RENAUER, Assistant Director

(617) 496-1878, E-mail: ann_renauer@harvard.edu

Publication date: August 2003

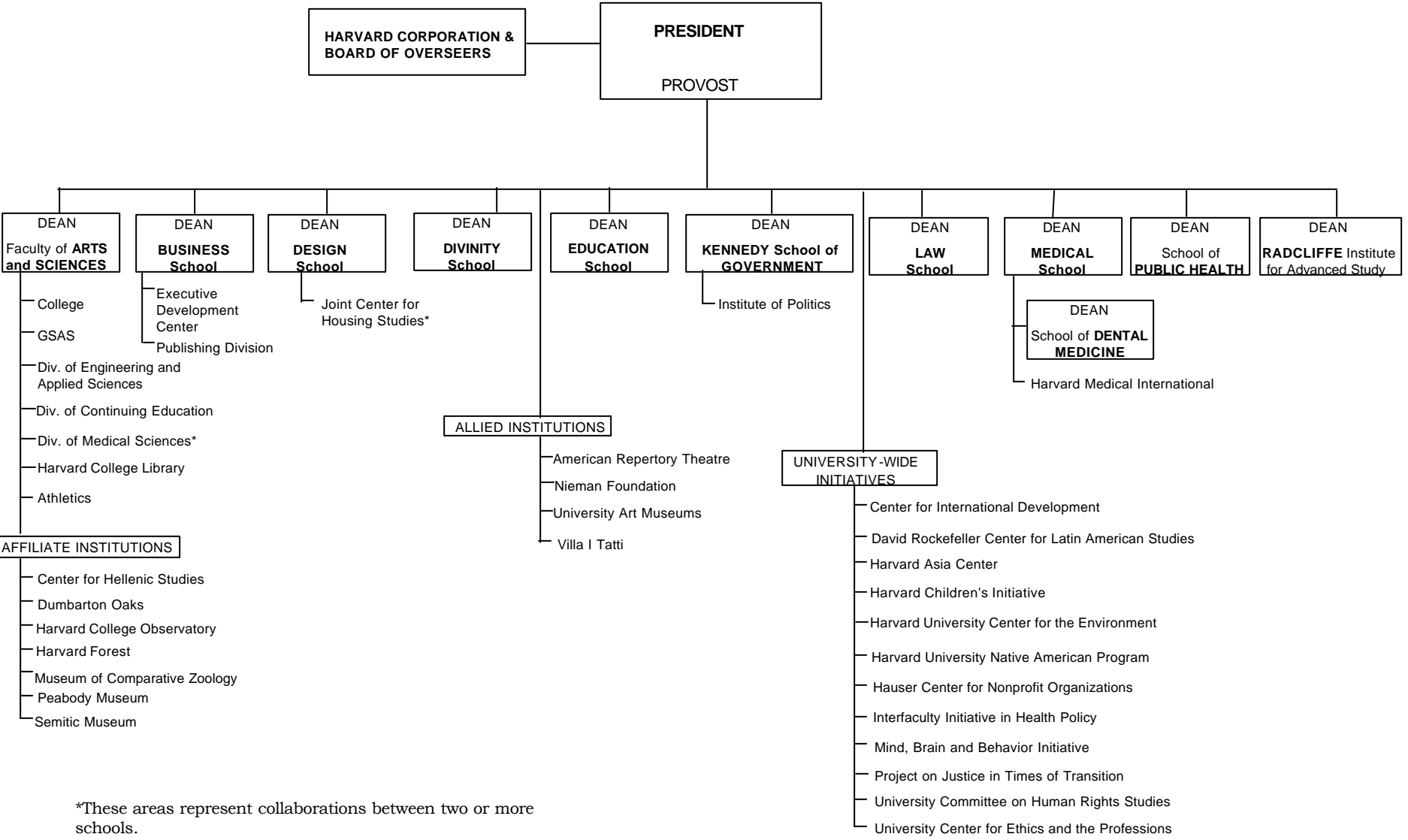
Changes to content after publication are reflected on the web version of the Fact Book.

Copyright 2003 by the President and Fellows of Harvard College



Departments in italics are separately incorporated.

The President of Harvard is also a member of the Harvard Corporation. The Central Administration includes those departments under the President, Provost and Vice Presidents in support of University-wide functions.



*These areas represent collaborations between two or more schools.

Additional information regarding each School's academic and research programs can be found at the following website: www.harvard.edu/academics/

A list of research and academic centers affiliated with the Schools can be found on pages 4-5 of the Fact Book.

Harvard University Research and Academic Centers ⁽¹⁾

FACULTY of ARTS and SCIENCES

Aga Khan
 Bauer Center for Genomics Research
 Derek Bok Center for Teaching and Learning
 Center for American Political Studies
 Center for Basic Research in the Social Sciences
 Center for Hellenic Studies
 Center for Imaging and Mesoscale Structures
 Center for Jewish Studies
 Center for Middle Eastern Studies
 Davis Center for Russian Studies
 W.E.B. Dubois Institute for Afro-American Research
 Dumbarton Oaks
 Fairbank Center for East Asian Research
 Minda de Gunzburg Center for European Studies
 Harvard Asia Center**
 Harvard MIT Data Center
 Harvard University Center for the Environment **
 Humanities Center
 Korea Institute
 Reischauer Institute of Japanese Studies
 David Rockefeller Center for Latin American Studies**
 Society of Fellows
 Ukrainian Research Institute
 Charles Warren Center for Studies in American History
 Weatherhead Center for International Affairs

BUSINESS

California Research Center
 Global Research Centers
 Institute for Strategy and Competitiveness *
 Initiative on Social Enterprise
 Arthur M. Rock Center for Entrepreneurship

DESIGN

Center for Design Informatics
 Center for Technology and Environment
 Center for Urban Development Studies
 Executive Education
 Joint Center for Housing Studies*
 Real Estate Academic Initiative

DIVINITY

Center for the Study of World Religions

EDUCATION

Civil Rights Project
 Harvard Family Research Project
 Harvard Immigration Project
 National Center for the Study of Adult Learning and Literacy
 Project Zero

GOVERNMENT

The Roy and Lila Ash Institute for Democratic Governance and Innovation
 Robert and Renee Belfer Center for Science and International Affairs
 Carr Center on Human Rights Policy
 Center for Business and Government
 Center for International Development at Harvard University *
 Center for Public Leadership
 Hauser Center for Nonprofit Organizations *
 Joan Shorenstein Center on the Press, Politics and Public Policy
 A. Alfred Taubman Center for State and Local Government
 University Center for Ethics and the Professions*
 Malcolm Wiener Center for Social Policy
 Women and Public Policy Program

UNIVERSITY-WIDE INITIATIVES*

Center for International Development at Harvard University
 David Rockefeller Center for Latin American Studies
 Harvard Asia Center
 Harvard Children's Initiative
 Harvard University Center for the Environment
 Harvard University Native American Program
 Hauser Center for Nonprofit Organizations
 Interfaculty Initiative in Health Policy
 Mind, Brain and Behavior Initiative
 Project on Justice in Times of Transition
 University Center for Ethics and the Professions
 University Committee on Human Rights Studies

(1) The Research and Academic Centers listed are those affiliated with the Schools.

(2) The A. Alfred Taubman Center for State and Local Government includes the Institute on Government Innovation and the Rappaport Institute for Greater Boston.

*These areas represent collaborations between two or more schools.

** Programs are located in FAS, but are considered University-Wide initiatives.

SOURCE: SCHOOLS

Harvard University Research and Academic Centers ⁽¹⁾

MEDICINE

Center for Craniofacial Tissue Engineering
 Center for Eating Disorders
 Center for Genetics and Genomics, Harvard Medical School-Partners Healthcare
 Center for Health and the Global Environment
 Center for Hereditary Deafness
 Center for Magnetic Resonance
 Center for Mental Health and Media
 Center for Palliative Care
 Center for Skin Disease Research
 Center of Excellence in Women's Health
 Dana Farber/Harvard Cancer Center
 Division for Research and Education in Complementary and Integrative Medical Therapies
 Division of Addictions
 Division of Aging
 Division of AIDS
 Division of Emergency Medicine
 Division of Health Care Policy Research and Education
 Division of Health Sciences and Technology
 Division of Medical Ethics
 Division of Nutrition
 Division of Primary Care
 Division of Service Learning
 Division of Sleep Medicine
 Institute for Chemistry and Cell Biology
 Institute of Human Genetics
 Institute of Mind/Brain/Behavior*
 Institute of Neuroscience, Harvard-Mahoney
 Institute of Proteomics
 Institute of Psychiatric Epidemiology and Genetics
 Program on Head and Neck Oncology

LAW

Ames Foundation and Selden Society
 Berkman Center for Internet & Society
 The Civil Rights Project at Harvard
 East Asian Legal Studies Program
 European Law Research Center
 Fund for Tax and Fiscal Policy Research
 Harvard Law School History Project
 Human Rights Program
 International Tax Program
 Islamic Legal Studies Program
 John M. Olin Center for Law, Economics and Business
 Labor and Worklife Program
 Program on Corporate Governance
 Program on Empirical Legal Studies
 Program of Instruction for Lawyers
 Program on International Financial Systems
 Program on Negotiation
 Program on the Legal Profession
 Project on Justice in Times of Transition

PUBLIC HEALTH

Center for Health Communications
 Francois-Xavier Bagnoud Center for Health and Human Rights
 Harvard Aids Institute
 Harvard Center for Cancer Prevention
 Harvard Center for Population and Development Studies
 Harvard Center for Risk Analysis
 Harvard Center for Society and Health

RADCLIFFE INSTITUTE FOR ADVANCED STUDY

Radcliffe Institute Fellowship Program
 Murray Research Center
 Schlesinger Library

1) The Research and Academic Centers listed are those affiliated with the Schools.

*These areas represent collaborations between two or more schools.

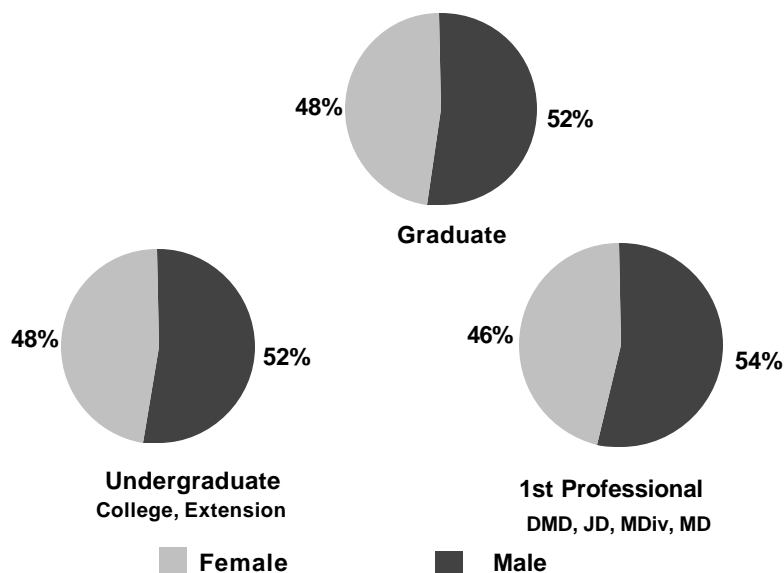
** Programs are located in FAS, but are considered University-Wide initiatives.

SOURCE: SCHOOLS

Degree Student Head Count: Fall 2002

Counts taken as of October 15, 2002

	Male	Female	Total	Full-Time	Part-Time	Total
College ⁽¹⁾						
Freshmen	842	788	1,630	1,627	3	1,630
Sophomores	734	659	1,393	1,393	-	1,393
Juniors ⁽²⁾	843	746	1,589	1,588	1	1,589
Seniors	1,112	925	2,037	2,032	5	4,612
Subtotal	3,531	3,118	6,649	6,640	9	6,649
GSAS ⁽³⁾	1,889	1,468	3,357	3,343	14	3,357
Business	1,180	656	1,836	1,836	-	1,836
Dental ⁽⁴⁾	117	90	207	207	-	207
Design	292	264	556	556	-	556
Divinity	193	250	443	406	37	443
Education	269	788	1,057	873	184	1,057
Government	498	398	896	857	39	896
Law	1,066	849	1,915	1,915	-	1,915
Medical	412	375	787	787	-	787
Public Health	324	501	825	612	213	825
Extension						
Undergraduate	168	233	401	182	219	401
Graduate	325	346	671	148	523	671
Subtotal, All Degree Students	10,264	9,336	19,600	18,362	1,238	19,600
Adj. for Joint Degree Students	(42)	(22)	(64)	(64)	-	(64)
TOTAL	10,222	9,314	19,536	18,298	1,238	19,536



(1) Students in the Advanced Standing Program are counted as Juniors in their second year and Seniors in their third and fourth year.

(2) Counts for Juniors include 17 undergraduates unclassified by year.

(3) Candidates for the Ph.D. are enrolled in GSAS but may cross register for courses in other faculties.

(4) Clinical specialty students in the Dental School are not included in totals. See page 16 for Dental Clinical Specialty counts.

SOURCE: FALL 2002 INTEGRATED POSTSECONDARY EDUCATION DATA SYSTEM (IPEDS)

Historical Enrollments: Fall 1997 - 2002

Degree Student Head Count by School

	Fall Enrollment					
	1997	1998	1999	2000	2001	2002
College	6,630	6,704	6,684	6,660	6,650	6,649
GSAS ⁽¹⁾	2,937	2,926	2,979	3,144	3,358	3,357
Business ⁽²⁾	1,475	1,517	1,485	1,458	1,847	1,836
Dental ⁽³⁾	234	210	209	214	213	207
Design	524	532	538	550	536	556
Divinity	516	513	481	480	451	443
Education	1,171	1,171	1,096	1,087	1,121	1,057
Government	831	728	770	840	881	896
Law	1,856	1,861	1,860	1,838	1,914	1,915
Medical	753	757	744	756	777	787
Public Health	726	756	760	823	808	825
Extension						
Undergraduate	456	423	403	437	435	401
Graduate	488	541	589	631	626	671
Subtotal, All Degree Students	18,597	18,639	18,598	18,918	19,617	19,600
Adj. for Joint Degree Students	(84)	(70)	(57)	(71)	(78)	(64)
TOTAL	18,513	18,569	18,541	18,847	19,539	19,536

	Enrollment Level ⁽⁴⁾					
	1997	1998	1999	2000	2001	2002
Undergraduates						
Full-Time	6,784	6,855	6,816	6,816	6,831	6,822
Part-Time	302	272	271	281	254	228
Subtotal	7,086	7,127	7,087	7,097	7,085	7,050
Graduate Students						
Full-Time	7,898	7,844	7,842	8,116	8,865	8,818
Part-Time	910	980	991	1,004	952	992
Subtotal	8,808	8,824	8,833	9,120	9,817	9,810
1st Professional Degree ⁽⁵⁾						
Full-Time	2,681	2,661	2,657	2,677	2,690	2,722
Part-Time	22	27	21	24	25	18
Subtotal	2,703	2,688	2,678	2,701	2,715	2,740
TOTAL	18,597	18,639	18,598	18,918	19,617	19,600

(1) Candidates for the Ph.D. are enrolled in GSAS but may cross register for courses in other faculties.

(2) Between January 1997 and January 2001, the Business School instituted a second matriculation date for its MBA Program. These students are not reflected in the counts above. Enrollments were 328 in January 1997, 325 in January 1998, 312 in January 1999, 301 in January 2000 and 341 in January 2001.

(3) These figures exclude postdoctoral students enrolled in a clinical specialty. See page 16 for Dental Clinical Specialty counts.

(4) Includes degree candidates from the Extension School. Not adjusted for joint degree candidates.

(5) 1st-Professional degrees include DMD, JD, MDiv, and MD.

SOURCE: IPEDS SURVEY

Student Enrollment by Degree: Fall 2002

		Male		Female		Total
		Full-Time	Part-Time	Full-Time	Part-Time	
College	A.B., S.B.	3,525	6	3,115	3	6,649
GSAS	A.M., S.M., Ph.D.	1,882	7	1,461	7	3,357
Business	M.B.A.	1,165	-	643	-	1,808
	D.B.A.	15	-	13	-	28
Dental	M.M.Sc.	25	-	17	-	42
	D.M.D.	75	-	65	-	140
	D.M.Sc.	17	-	8	-	25
Design	M.Arch.	169	-	134	-	303
	M.A.U.D./M.L.A.U.D.	30	-	14	-	44
	M.Des	31	-	20	-	51
	M.L.A.	30	-	57	-	87
	M.U.P.	12	-	24	-	36
	Dr.Des	20	-	15	-	35
Divinity	M.Div.	66	5	87	13	171
	M.T.S.	84	4	111	12	211
	Th.M.	3	3	1	-	7
	Th.D.	28	-	26	-	54
Education	Ed.M.	129	18	381	91	619
	Ed.D.	98	23	260	49	430
	C.A.S.	1	-	4	3	8
Government	M.P.A.	224	13	122	10	369
	M.P.A./I.D.	76	-	72	-	148
	M.P.P.	157	10	173	6	346
	M.U.P.	9	-	4	-	13
	Ph.D.	9	-	11	-	20
Law	J.D.	943	-	753	-	1,696
	LL.M.	78	-	65	-	143
	S.J.D.	45	-	31	-	76
Medical	M.D.	377	-	356	-	733
	M.M.Sc.	35	-	19	-	54
Public Health	M.P.H.	79	57	61	49	246
	M.S.	41	45	135	27	248
	D.P.H.	6	1	8	2	17
	D.S.	82	13	200	19	314
Extension	A.A., A.L.B.	82	86	100	133	401
	A.L.M., Grad. Cert.	67	258	81	265	671
TOTAL ⁽¹⁾		9,715	549	8,647	689	19,600

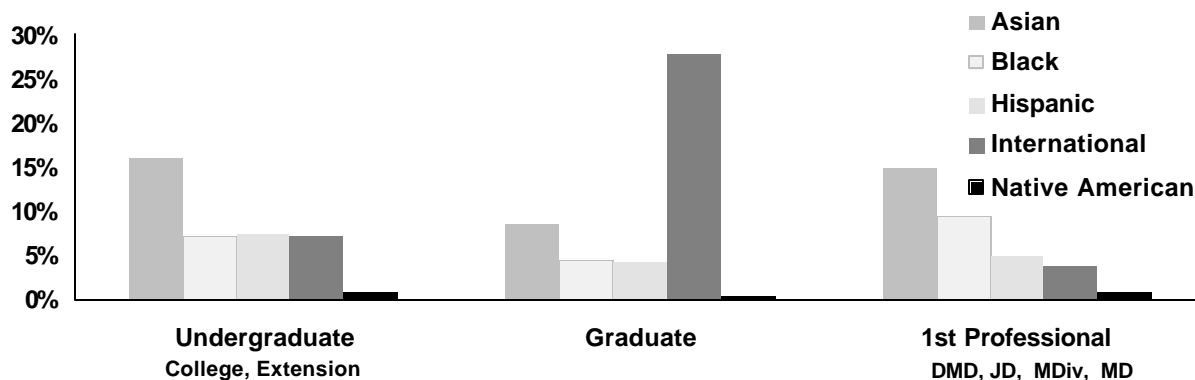
(1) Not adjusted for joint degree students.

SOURCE: 2002 IPEDS SURVEY

Degree Student Enrollment by Ethnicity: Fall 2002 ⁽¹⁾

	College	GSAS	Business	Dental	Design	Divinity	Education	Government	Law	Medical	Public Health	Extension	Total
Asian/Pacific Islander													
Male	513	112	84	27	30	13	18	29	87	115	29	42	1,099
Female	594	148	81	30	51	12	70	34	84	84	57	41	1,286
Subtotal	1,107	260	165	57	81	25	88	63	171	199	86	83	2,385
Percent	17%	8%	9%	28%	15%	6%	8%	7%	9%	25%	10%	8%	12.2%
Black/Non-Hispanic													
Male	233	46	62	6	12	14	21	19	49	42	11	18	533
Female	250	70	46	1	9	17	51	34	98	51	28	24	679
Subtotal	483	116	108	7	21	31	72	53	147	93	39	42	1,212
Percent	7%	3%	6%	3%	4%	7%	7%	6%	8%	12%	5%	13%	6.2%
Hispanic													
Male	259	55	44	3	11	8	28	25	43	41	9	20	546
Female	249	65	21	5	19	8	55	29	31	17	17	17	533
Subtotal	508	120	65	8	30	16	83	54	74	58	26	37	1,079
Percent	8%	4%	4%	4%	5%	4%	8%	6%	4%	7%	3%	3%	5.5%
International Students													
Male	272	532	427	24	96	26	28	229	148	24	110	82	1,998
Female	230	325	186	16	72	17	72	129	118	16	105	74	1,360
Subtotal	502	857	613	40	168	43	100	358	266	40	215	156	3,358
Percent	8%	26%	33%	19%	30%	10%	9%	40%	14%	5%	26%	15%	17.1%
Native American													
Male	26	2	8	-	-	3	2	4	1	6	1	5	58
Female	25	4	1	-	3	2	4	2	3	7	2	3	56
Subtotal	51	6	9	-	3	5	6	6	4	13	3	8	114
Percent	1%	0%	0%	0%	1%	1%	1%	1%	0%	2%	0%	1%	0.6%
White/Non-Hispanic													
Male	1,720	709	413	51	123	124	123	154	529	168	122	285	4,521
Female	1,374	524	262	34	95	169	421	142	372	194	219	379	4,185
Subtotal	3,094	1,233	675	85	218	293	544	296	901	362	341	664	8,706
Percent	47%	37%	37%	41%	39%	66%	51%	33%	47%	46%	41%	62%	44.4%
Unknown/Other													
Male	508	433	142	6	20	5	49	38	209	16	42	41	1,509
Female	396	332	59	4	15	25	115	28	143	6	73	41	1,237
Subtotal	904	765	201	10	35	30	164	66	352	22	115	82	2,746
Percent	14%	23%	11%	5%	6%	7%	16%	7%	18%	3%	14%	8%	14.0%
TOTAL	6,649	3,357	1,836	207	556	443	1,057	896	1,915	787	825	1,072	19,600

Percentage of Minority and International Students by Enrollment Level

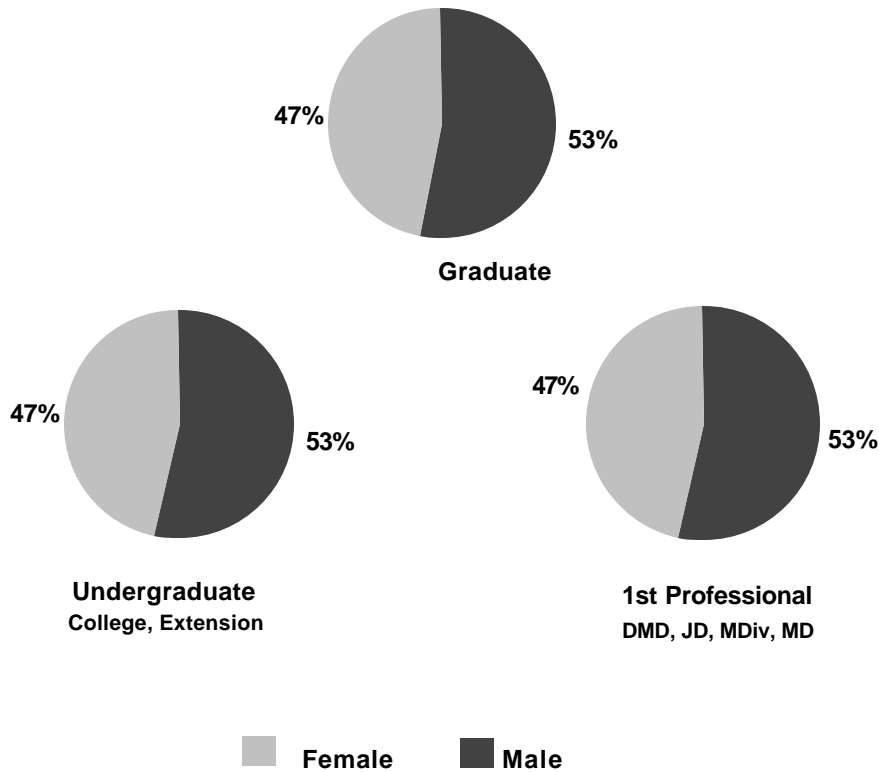


(1) Not adjusted for joint degree students.

SOURCE: 2002 IPEDS SURVEY

Degrees Conferred by School Academic Year 2001-2002

	Male	Female	Total
College	890	775	1,665
GSAS	471	305	776
Business	622	298	920
Dental	28	28	56
Design	122	100	222
Divinity	72	80	152
Education	176	508	684
Government	296	209	505
Law	393	312	705
Medical	99	71	170
Public Health	183	207	390
Extension			
Undergraduate	77	73	150
Graduate	166	230	396
TOTAL	3,595	3,196	6,791



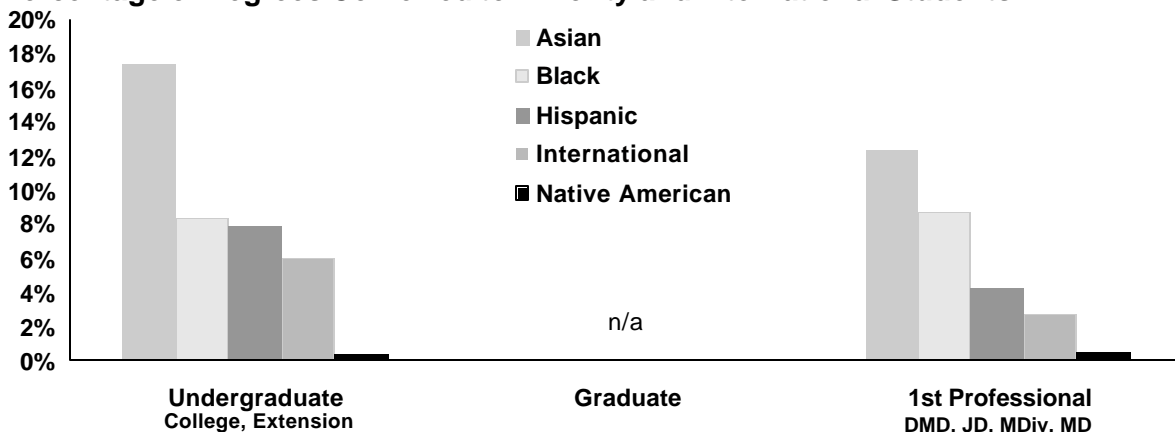
Degrees Conferred by Degree: Academic Year 2001-2002

		Male	Female	Total
College	A.B.	882	774	1,656
	S.B.	8	1	9
GSAS	A.M.	187	138	325
	M.F.S.	2	1	3
	S.M.	51	14	65
	Ph.D.	231	152	383
Business	M.B.A.	619	297	916
	D.B.A.	3	1	4
Dental	D.M.D.	13	19	32
	M.M.Sc.	9	5	14
	D.M.Sc.	6	4	10
Design	M.Arch.	52	46	98
	M.A.U.D./M.L.A.U.D.	14	10	24
	M.Des.	32	19	51
	M.L.A.	9	15	24
	M.U.P.	6	8	14
	Dr.Des.	9	2	11
Divinity	M.Div.	18	20	38
	M.T.S.	48	54	102
	Th.M.	4	-	4
	Th.D.	2	6	8
Education	Ed.M.	155	448	603
	Ed.D.	19	59	78
	C.A.S.	2	1	3
Government	M.P.A. (1 YEAR)	127	75	202
	M.P.A. (2 YEAR)	49	35	84
	M.P.A./I.D.	41	15	56
	M.P.P.	78	80	158
	M.U.P.	1	4	5
Law	J.D.	298	256	554
	LL.M.	89	55	144
	S.J.D.	6	1	7
Medical	M.D.	88	69	157
	M.M.Sc.	11	2	13
Public Health	M.P.H.	106	108	214
	M.S.	55	79	134
	D.P.H.	4	2	6
	D.S.	18	18	36
Extension	A.A.	9	7	16
	A.L.B.	68	66	134
	A.L.M.	34	50	84
	Grad. Cert.	132	180	312
	TOTAL	3,595	3,196	6,791

Degrees Conferred by Student Ethnicity: Academic Year 2001-2002

	College	GSAS	Business ⁽¹⁾	Dental	Design	Divinity	Education	Government	Law	Medical	Public Health	Extension	Total
Asian/Pacific Islander													
Male	155	37	n/a	7	5	2	13	13	23	24	13	18	n/a
Female	155	19	n/a	7	12	5	45	15	28	14	36	15	n/a
Subtotal	310	56		14	17	7	58	28	51	38	49	33	
Percent	19%	7%		25%	8%	5%	8%	6%	7%	22%	13%	6%	
Black/Non-Hispanic													
Male	58	10	n/a	-	-	7	17	6	22	8	6	10	n/a
Female	82	12	n/a	-	2	4	27	14	28	7	12	10	n/a
Subtotal	140	22		-	2	11	44	20	50	15	18	20	
Percent	8%	3%		0%	1%	7%	6%	4%	7%	9%	5%	4%	
Hispanic													
Male	72	10	n/a	2	3	7	12	8	8	10	8	7	n/a
Female	63	15	n/a	-	1	2	37	14	9	4	4	11	n/a
Subtotal	135	25		2	4	9	49	22	17	14	12	18	
Percent	8%	3%		4%	2%	6%	7%	4%	2%	8%	3%	3%	
International Students													
Male	56	128	n/a	5	67	9	22	158	86	13	64	67	n/a
Female	52	88	n/a	5	43	4	50	76	53	3	57	98	n/a
Subtotal	108	216		10	110	13	72	234	139	16	121	165	
Percent	6%	28%		18%	50%	9%	11%	46%	20%	9%	31%	30%	
Native American													
Male	3	2	n/a	-	-	1	-	4	1	-	1	-	n/a
Female	4	1	n/a	-	-	-	4	2	3	-	-	-	n/a
Subtotal	7	3		-	-	1	4	6	4	-	1	-	
Percent	0%	0%		0%	0%	1%	1%	1%	1%	0%	0%	0%	
White/Non-Hispanic													
Male	407	153	n/a	13	43	46	87	86	208	39	69	122	n/a
Female	314	83	n/a	13	36	62	262	78	159	39	69	153	n/a
Subtotal	721	236		26	79	108	349	164	367	78	138	275	
Percent	43%	30%		46%	36%	71%	51%	32%	52%	46%	35%	50%	
Unknown/Other													
Male	139	131	n/a	1	4	-	25	21	45	5	22	19	n/a
Female	105	87	n/a	3	6	3	83	10	32	4	29	16	n/a
Subtotal	244	218		4	10	3	108	31	77	9	51	35	
Percent	15%	28%		7%	5%	2%	16%	6%	11%	5%	13%	6%	
TOTAL	1,665	776	920	56	222	152	684	505	705	170	390	546	6,791

Percentage of Degrees Conferred to Minority and International Students



(1) Degrees conferred by student ethnicity is not available for the Business School.
SOURCE: 2002 IPEDS SURVEY

Degrees Conferred: Academic Year 1997-2002

	Academic Year	1997	1998	1999	2000	2001	2002
College	A.B.	1,657	1,651	1,649	1,675	1,694	1,656
	S.B.	12	12	10	14	8	9
	Subtotal	1,669	1,663	1,659	1,689	1,702	1,665
GSAS	A.M.	263	287	289	286	317	325
	M.E.	-	-	-	-	1	-
	M.F.S.	1	-	-	-	1	3
	S.M.	18	42	32	37	44	65
	Ph.D.	437	428	438	412	387	383
	Subtotal	719	757	759	735	750	776
Business	M.B.A.	892	859	897	876	848	916
	D.B.A.	9	4	12	4	5	4
	Subtotal	901	863	909	880	853	920
Dental	D.M.D.	22	53	31	28	32	32
	M.M.S.	16	14	10	12	15	14
	M.P.H.	-	1	-	-	2	-
	D.M.S.	11	9	12	5	8	10
	Subtotal	49	77	53	45	57	56
Design	M. Arch.	86	91	92	89	96	98
	M.A.U.D./M.L.A.U.D.	26	24	26	22	25	24
	M.Des.	35	38	34	39	45	51
	M.L.A.	29	36	44	28	34	24
	M.U.P.	13	12	13	14	18	14
	Dr.Des.	3	-	3	7	9	11
	Subtotal	192	201	212	199	227	222
Divinity	M.Div.	52	52	54	53	63	38
	M.T.S.	90	99	116	103	95	102
	Th.M.	11	12	7	7	7	4
	Th.D.	8	12	3	4	6	8
	Subtotal	161	175	180	167	171	152
Education	Ed.M.	588	580	609	540	603	603
	Ed.D.	63	47	62	58	47	78
	C.A.S.	18	15	13	12	6	3
	Subtotal	669	642	684	610	656	684
Government	M.P.A. (1 Year)	225	236	194	202	191	202
	M.P.A. (2 Year)	60	54	59	94	72	84
	M.P.A./I.D.	-	-	-	-	49	56
	M.P.P.	182	233	207	143	150	158
	M.C.R.P./M.U.P.	4	10	3	6	4	5
	D.P.A.	-	-	-	-	1	-
Subtotal	471	533	463	445	467	505	
Law	J.D.	548	538	563	557	543	554
	LL.M.	146	135	158	134	130	144
	S.J.D.	6	8	6	13	10	7
	Subtotal	700	681	727	704	683	705
Medicine	M.D.	188	165	178	162	162	157
	M.M.Sc.	19	11	20	19	11	13
	Subtotal	207	176	198	181	173	170
Public Health	M.P.H.	165	173	165	167	205	214
	M.S., M.O.H.	125	122	146	133	147	134
	D.P.H., D.S.	49	59	66	52	39	42
	Subtotal	339	354	377	352	391	390
Extension	A.A.	7	15	19	12	10	16
	A.L.B.	109	115	117	135	126	134
	A.L.M.	89	72	91	77	88	84
	Grad. Cert.	213	261	294	301	341	312
	Subtotal	418	463	521	525	565	546
TOTAL	6,495	6,585	6,742	6,532	6,695	6,791	

International Enrollment: Fall 2002 ⁽¹⁾

	Africa	Asia	Europe	Latin America	Middle East	North America	Oceania	Stateless	Total
College	29	97	165	22	15	148	15	1	492
GSAS	13	406	305	49	71	141	20	1	1,006
Business	33	161	217	67	25	100	15	-	618
Dental	-	16	5	9	7	5	-	-	42
Design	3	104	37	14	8	17	3	-	186
Divinity	2	15	11	1	2	11	3	-	45
Education	5	42	13	16	3	20	1	-	100
Government	14	113	103	48	18	28	14	-	338
Law	22	70	73	23	26	43	12	-	269
Medical	6	6	8	3	3	9	-	-	35
Public Health	19	105	28	15	6	43	1	-	217
Extension	2	26	14	38	15	15	1	-	111
TOTAL	148	1,161	979	305	199	580	85	2	3,459

(1) Counts include full-time degree and non-degree students only, which include transfer and special students, visiting undergraduates, and Extension School enrollees. Counts exclude executive education and professional development programs.

SOURCE: INTERNATIONAL OFFICE

Historical Enrollment of International Students: Fall 1997 - 2002 ⁽¹⁾

	Fall						
	1997	1998	1999	2000	2001	2002	
Africa							Africa Other: Algeria, Benin, Botswana, Burkina Faso, Cameroon, Cote D'Ivoire, Ethiopia, Gambia, Guinea, Guinea-Bissau, Liberia, Mali, Mauritania, Morocco, Mozambique, Sierra Leone, Senegal, Sudan, Swaziland, Tanzania, Togo, Tunisia, Uganda, Zambia, Zimbabwe.
Egypt	9	9	8	4	16	11	
Ghana	12	5	8	13	16	15	
Kenya	14	10	12	16	17	14	
Nigeria	9	12	18	21	34	22	
South Africa	22	22	23	28	26	30	
Other	54	49	33	49	55	56	
Subtotal	120	107	102	131	164	148	
Asia							Asia Other: Bangladesh, Bhutan, Brunei, Burma, Hong Kong, Indonesia, Kazakhstan, Kyrgyzstan, Malaysia, Mongolia, Nepal, North Korea, Pakistan, Philippines, Singapore, Sri Lanka, Taiwan, Tajikistan, Thailand, Uzbekistan, Vietnam.
China	165	176	227	270	318	337	
India	97	89	96	104	120	112	
Japan	175	148	151	158	163	134	
South Korea	174	180	183	213	212	207	
Taiwan	114	108	97	102	81	86	
Other	263	243	274	270	286	285	
Subtotal	988	944	1,028	1,117	1,180	1,161	
Europe							Europe Other: Albania, Armenia, Austria, Azerbaijan, Belarus, Belgium, Bosnia and Herzegovina, Bulgaria, Croatia, Czech Republic, Denmark, Estonia, Finland, Georgia, Greece, Hungary, Iceland, Ireland, Latvia, Lithuania, Luxembourg, Macedonia, Moldova, Monaco, Netherlands, Norway, Poland, Portugal, Romania, Russia, Slovakia, Slovenia, Sweden, Switzerland, Ukraine, Yugoslavia (Former).
France	64	60	71	74	67	83	
Germany	112	103	123	120	119	124	
Italy	40	42	40	48	49	51	
Spain	53	56	60	62	67	55	
United Kingdom	119	109	133	158	157	174	
Other	418	450	468	482	487	492	
Subtotal	806	820	895	944	946	979	
Latin America							Latin America Other: Bahamas, Barbados, Bolivia, Costa Rica, Dominican Republic, Ecuador, El Salvador, Guatemala, Haiti, Honduras, Jamaica, Nicaragua, Panama, Paraguay, St. Lucia, Trinidad and Tobago, Uruguay, Venezuela.
Argentina	40	54	62	57	61	60	
Brazil	43	50	67	61	65	68	
Chile	13	18	25	33	24	26	
Colombia	27	28	47	48	40	50	
Peru	19	14	17	24	27	18	
Other	80	78	105	96	90	83	
Subtotal	222	242	323	319	307	305	
Middle East							Middle East Other: Cyprus, Iran, Iraq, Kuwait, Palestinian Authority, Qatar, Saudi Arabia, Syria, United Arab Emirates.
Israel	46	51	63	72	71	75	
Jordan	4	3	2	6	10	6	
Lebanon	10	8	8	9	16	8	
Turkey	54	56	66	75	64	79	
Other	39	32	37	38	35	31	
Subtotal	153	150	176	200	196	199	
North America							
Bermuda	1	2	1	1	2	3	
Canada	363	401	419	434	464	492	
Mexico	99	86	83	101	95	85	
Subtotal	463	489	503	536	561	580	
Oceania							
Australia	54	50	53	61	73	66	
New Zealand	17	16	19	22	21	19	
Other	1	-	-	-	-	-	
Subtotal	72	66	72	83	94	85	
Stateless	-	-	-	-	-	2	
TOTAL	2,824	2,818	3,099	3,330	3,448	3,459	

(1) Counts include full-time degree and non-degree students only, which includes transfer and special students, visiting undergraduates, and Extension School enrollees. Counts exclude executive education and professional development programs. Countries listed above are for Fall 2002. Information on countries for enrollments in prior years can be obtained from the International Office.

SOURCE: INTERNATIONAL OFFICE

Summer School Enrollment: Summer 1997 - 2002

Harvard Students by School ⁽¹⁾

	1997	1998	1999	2000	2001	2002
College	314	321	303	313	330	322
GSAS	49	37	43	55	62	61
Education	8	6	8	14	12	5
Extension	259	299	317	296	291	298
Other Harvard Schools	32	26	12	19	22	17
Subtotal	662	689	683	697	717	703

Other Students by Educational Level

Undergraduate	1,170	1,155	1,047	1,101	1,067	1,050
Graduate	1,882	1,883	1,623	1,667	1,642	1,522
Secondary School	1,131	1,211	1,217	1,244	1,190	1,320
Non-Degree	204	160	343	335	279	299
Subtotal	4,387	4,409	4,230	4,347	4,178	4,191
TOTAL	5,049	5,098	4,913	5,044	4,895	4,894

Non-Degree Headcount: Fall 1997 - 2002 ⁽²⁾

	1997	1998	1999	2000	2001	2002		
						Male	Female	Total
GSAS	220	212	214	215	144	97	107	204
Dental ⁽³⁾	36	45	40	53	31	20	20	40
Design	3	2	-	1	12	2	1	3
Divinity	35	35	32	30	45	10	8	18
Education	70	69	70	71	84	23	80	103
Government	11	18	9	15	13	3	5	8
Law	70	76	64	43	38	31	16	47
Public Health	5	1	1	-	3	-	1	1
Extension ⁽⁴⁾	5,281	5,276	5,186	4,933	4,483	2,297	2,648	4,945
TOTAL	5,731	5,734	5,616	5,361	4,853	2,483	2,886	5,369

(1) Counts include matriculating Harvard students enrolled in Harvard courses during the summer session.

(2) Non-degree enrollments include all students enrolled on October 15 in at least one class that is creditable toward a degree or formal award.

(3) Includes post-doctorate in clinical specialty certification programs.

(4) Counts are for the first semester only. This significantly undercounts yearly enrollment in the Extension School as a roughly equal number of new students might be enrolled in the second semester.

Fellowship Programs: Academic Year 2002 - 2003

Fellows	Male	Female	Total
Allied Institutions			
Arnold Arboretum	4	5	9
Center for Hellenic Studies	9	4	13
Dumbarton Oaks	22	16	38
Nieman Fellows	13	13	26
Ethics and the Professions	9	3	12
South African Fellows	3	3	6
Villa I Tatti	10	7	17
FAS			
WCFA Fellows ⁽¹⁾	33	23	56
Visiting Fellows	34	37	71
Warren Fellows	3	4	7
W.E.B. DuBois Institute Fellows	11	4	15
Yenching Fellows	26	5	31
Design			
Loeb Fellows	4	8	12
Divinity			
Ctr. for the Study of World Religions	10	17	27
Merrill Fellows	4	3	7
Ministers in Vicinity	1	-	1
Urban Fellows	3	7	10
Resident Fellows	1	-	1
Government			
Institute of Politics Fellows	14	8	22
Mason Fellows	34	18	52
National Security Fellows	20	1	21
Senior Executive Fellows	122	55	177
Law			
Olin Fellows	n/a	n/a	19
The Graduate Program	14	9	23
Human Rights Program			-
Public Health			
Minority Scholars in Health Disparities	1	1	2
Post Doctorate Fellows	93	93	186
Takemi Program	2	9	11
Yerby Fellowship Program	3	1	4
Radcliffe Institute for Advanced Study			
RIAS Fellows ⁽²⁾	11	39	50
Subtotal	-	-	926
Medical and Dental School			
Research and Clinical Fellows ⁽³⁾			
	Male	Female	Total
Medical School - Quad	365	207	572
Medical School - Hospital	3,405	2,298	5,703
Dental School - Quad	57	45	102
Dental School - Hospital	32	25	57
Subtotal	3,859	2,575	6,434
TOTAL FELLOWS	-	-	7,360

(1) The Weatherhead Center for International Affairs includes Harvard Academy for International and Area Studies, Olin Institute for Strategic Studies, the Program on U.S. Japan Studies, and the Fellows Program.

(2) Radcliffe Institute for Advanced Study Fellows include Murray Research Center, Public Policy Center, Radcliffe Fellowship Program and Schlesinger Library.

(3) Includes Post-Doctoral Fellows, Interns and Residents

SOURCE: INTERNAL SURVEY

University Faculty Excluding Faculty of Medicine: Fall 2002⁽¹⁾

	Head Count			Full-time
	Male	Female	Total	Equivalent
Arts and Sciences				
Professor	346	80	426	401.0
Associate Professor	32	16	48	44.0
Assistant Professor	90	45	135	124.4
Other Faculty	250	183	433	282.4
TOTAL	718	324	1,042	851.8

Design				
Professor	18	3	21	18.5
Associate Professor	8	3	11	10.5
Assistant Professor	2	5	7	7.0
Other Faculty	42	17	59	21.4
TOTAL	70	28	98	57.4

Education				
Professor	16	11	27	26.5
Associate Professor	3	2	5	4.5
Assistant Professor	1	5	6	6.0
Other Faculty	26	26	52	26.6
TOTAL	46	44	90	63.6

Law				
Professor	58	12	70	67.3
Associate Professor	n/a	n/a	n/a	n/a
Assistant Professor	7	3	10	10.0
Other Faculty	60	21	81	37.6
TOTAL	125	36	161	114.9

University⁽²⁾				
University Professor ⁽³⁾	16	1	17	16.6
Professor	1	1	2	1.5
TOTAL	17	2	19	18.1

	Head Count			Full-time
	Male	Female	Total	Equivalent
Business				
Professor	81	16	97	95.3
Associate Professor	23	5	28	28.0
Assistant Professor	46	20	66	65.6
Other Faculty	14	3	17	12.3
TOTAL	164	44	208	201.2

Divinity				
Professor	12	6	18	17.3
Associate Professor	-	2	2	2.0
Assistant Professor	2	1	3	3.0
Other Faculty	14	13	27	10.1
TOTAL	28	22	50	32.4

Government				
Professor	40	5	45	42.7
Associate Professor	6	4	10	10.0
Assistant Professor	14	6	20	20.0
Other Faculty	36	17	53	42.5
TOTAL	96	32	128	115.2

Public Health				
Professor	46	15	61	58.3
Associate Professor	18	11	29	28.1
Assistant Professor	32	15	47	45.3
Other Faculty	40	24	64	50.9
TOTAL	136	65	201	182.6

University Faculty Excluding Faculty of Medicine				
Professor	634	150	784	745.0
Associate Professor	90	43	133	127.1
Assistant Professor	194	100	294	281.3
Other Faculty	482	304	786	483.7
TOTAL	1,400	597	1,997	1,637.1

(1) Counts include all faculty currently appointed except for those on unpaid leave of absence. Other Faculty includes Visiting Professors, Visiting Associate Professors, Adjunct Faculty, Instructors, Lecturers, Critics, and Preceptors.

(2) University total includes University Professors and faculty based in other academic units.

(3) University Professors are special endowed positions and are the University's highest professorial distinction. These Professors were originally appointed to the following faculties: Arts and Sciences, eleven; Business, two; Government, two;

Law, one; and Medical, one. They are not included in the individual School counts.

SOURCE: INTERNAL SURVEY OF EACH FACULTY

Faculty of Medicine: Fall 2002 ⁽¹⁾**Faculty Based in the Medical Area Quad**

	Head Count				
	Male	Female	Full-Time	Part-Time	Total
Medical					
Professor	86	14	98	2	100
Associate Professor	33	11	42	2	44
Assistant Professor	35	18	46	7	53
Other Faculty	66	44	77	33	110
Medical Total	220	87	263	44	307
Dental					
Professor	6	-	6	-	6
Associate Professor	1	2	3	-	3
Assistant Professor	13	4	7	10	17
Other Faculty	67	28	26	69	95
Dental Total	87	34	42	79	121
Totals					
Professor	92	14	104	2	106
Associate Professor	34	13	45	2	47
Assistant Professor	48	22	53	17	70
Other Faculty	133	72	103	102	205
TOTAL	307	121	305	123	428

Faculty Based in Harvard's Affiliated Teaching Hospitals

	Head Count				
	Male	Female	Full-Time	Part-Time	Total
Medical					
Professor	517	61	524	54	578
Associate Professor	871	205	927	149	1,076
Assistant Professor	1,092	459	1,236	315	1,551
Other Faculty	2,956	2,193	2,999	2,150	5,149
Medical Total	5,436	2,918	5,686	2,668	8,354
Dental					
Professor	6	1	5	2	7
Associate Professor	22	2	12	12	24
Assistant Professor	20	7	13	14	27
Other Faculty	143	42	27	158	185
Dental Total	191	52	57	186	243
Totals					
Professor	523	62	529	56	585
Associate Professor	893	207	939	161	1,100
Assistant Professor	1,112	466	1,249	329	1,578
Other Faculty	3,099	2,235	3,026	2,308	5,334
TOTAL	5,627	2,970	5,743	2,854	8,597

(1) The Faculties of the Medical and Dental Schools are made up of both quad and hospital-based personnel. Quad-based faculty are located in Medical and Dental School facilities and are primarily research oriented. Hospital-based faculty are located in affiliated hospitals and work in both research and clinical settings. Medical School faculty supervise degree students, post-doctoral residents, fellows and interns. Other faculty include instructors and lecturers. FTE's are not available for the Faculty of Medicine.

SOURCE: MEDICAL SCHOOL OFFICE OF HUMAN RESOURCES

Administrative and Professional, Clerical and Technical, and Hourly Staff in the Schools ⁽¹⁾

Counts are Full-Time Equivalent Figures as of September 30, 2002

University-Wide Totals	University Funding			Sponsored Funding			Service & Trades	Total
	Administrative & Professional	Other Teaching/ Research Appts.	Clerical & Technical	Administrative & Professional	Other Teaching/ Research Appts.	Clerical & Technical		
Faculties	3,288.4	377.8	2,719.0	503.7	849.3	596.6	44.8	8,379.6
Allieds	260.9	11.8	164.2	1.5	-	1.0	52.8	492.2
Central Administration ⁽²⁾	541.7	-	374.0	-	-	3.5	57.0	976.2
Service Departments ⁽²⁾	682.1	3.6	424.5	1.6	0.2	-	856.5	1,968.5
Non-Departmental & Special ⁽³⁾	49.5	-	48.4	-	-	-	-	97.9
TOTAL	4,822.6	393.2	3,730.1	506.8	849.5	601.1	1,011.1	11,914.4

Faculties	University Funding			Sponsored Funding			Service & Trades	Total
	Administrative & Professional	Other Teaching/ Research Appts.	Clerical & Technical	Administrative & Professional	Other Teaching/ Research Appts.	Clerical & Technical		
Faculty of Arts and Sciences	560.3	162.4	573.4	65.6	214.3	90.0	1.0	1,667.0
Athletics	97.1	8.2	22.7	-	-	-	-	128.0
College Library	244.2	-	268.7	-	-	-	-	512.9
DEAS ⁽⁴⁾	40.6	13.6	40.9	39.6	74.8	3.9	8.5	221.9
Division of Continuing Education	66.1	0.6	56.1	-	-	-	-	122.8
GSAS	22.0	-	18.1	-	-	-	-	40.1
College Life and Student Dorms	114.0	13.4	60.0	-	-	-	-	187.4
Museums ⁽⁵⁾	71.6	6.5	85.8	0.6	6.0	1.0	-	171.5
Yenching	5.7	-	3.0	1.0	-	-	-	9.7
Subtotal	1,221.6	204.7	1,128.7	106.8	295.1	94.9	9.5	3,061.3
Business	434.1	17.7	268.4	-	-	-	-	720.2
Publishing Division	237.4	-	17.0	-	-	-	-	254.4
Subtotal	671.5	17.7	285.4	-	-	-	-	974.6
Dental	27.8	8.0	70.0	1.1	1.0	3.0	-	110.9
Design	53.2	2.9	46.5	0.5	-	1.2	-	104.3
Divinity	49.0	6.6	45.7	-	0.2	0.5	-	102.0
Education	143.2	2.9	119.4	35.6	2.2	20.0	-	323.3
Government	231.6	9.4	177.9	44.6	29.0	16.8	-	509.3
Law	222.4	3.0	195.8	15.7	-	8.9	-	445.8
Medical	451.3	82.4	429.7	122.5	331.7	256.0	35.3	1,708.9
Public Health	149.4	40.2	165.1	174.1	190.1	188.3	-	907.2
Radcliffe Institute for Advanced Study	67.4	-	54.8	2.8	-	7.0	-	132.0
Subtotal Faculties	3,288.4	377.8	2,719.0	503.7	849.3	596.6	44.8	8,379.6

(1) Administrative and Professional figures include some persons on faculty payrolls who hold administrative positions, and instructional and research support staff on the administrative payroll. Figures do not include temporary employees (except limited regular guards and custodians), students or teaching fellows. Counts include only filled positions.

(2) Core departments provide central functions of the University (accounts payable, HR benefits etc.) and are supported through funds from the President, Faculties, and departments. Service departments derive their revenue on a fee-for-service basis from internal customers.

(3) Signet Society, Credit Union, Harvard Student Agencies, LASPAU and some interdepartmental personnel.

(4) DEAS refers to Division of Engineering and Applied Sciences.

(5) Museums include Museum of Comparative Zoology, Peabody Museum and Semitic Museum.

SOURCE: HUMAN RESOURCE PERSONNEL/PAYROLL DATABASE

Staff in the Allied Institutions, Central Administration and Service Departments ⁽¹⁾

Counts are Full-Time Equivalent Figures as of September 30, 2002

Allied Institutions	University Funding			Sponsored Funding			Service & Trades	Total
	Administrative & Professional	Other Teaching/ Research Appts.	Clerical & Technical	Administrative & Professional	Other Teaching/ Research Appts.	Clerical & Technical		
American Repertory Theatre	44.1	-	22.8	-	-	-	-	66.9
Arnold Arboretum	28.1	-	19.2	-	-	-	15.0	62.3
Art Museums	81.2	9.0	67.5	1.0	-	1.0	37.8	197.5
Harvard Magazine	14.8	-	2.5	-	-	-	-	17.3
Inter-Faculty Initiatives	9.2	2.3	9.9	0.5	-	-	-	21.9
Joint Center for Housing Studies	6.0	-	8.8	-	-	-	-	14.8
Memorial Church	7.8	0.5	6.3	-	-	-	-	14.6
Nieman Foundation	7.9	-	4.1	-	-	-	-	12.0
University Press	55.2	-	23.1	-	-	-	-	78.3
Villa I Tatti ⁽²⁾	6.6	-	-	-	-	-	-	6.6
Subtotal	260.9	11.8	164.2	1.5	0.0	1.0	52.8	492.2

Central Administration - Core and Service Departments ⁽³⁾

Core departments in bold, service departments in italics

President & Provost, University Marshal and Office of the Governing Boards								
and Office of the Governing Boards	32.6	-	19.8	-	-	-	1.0	53.4
<i>University Information Services ⁽⁴⁾</i>	246.7	-	116.3	-	-	-	12.7	375.7
<i>University Health Services</i>	117.4	2.6	130.4	1.6	0.2	-	-	252.2
VP Administration	92.1	-	56.7	-	-	-	-	148.8
<i>Harvard Planning and Real Estate</i>	79.2	-	60.1	-	-	-	-	139.3
<i>Dining Services</i>	74.0	-	18.9	-	-	-	357.0	449.9
<i>Faculty Club</i>	15.0	-	6.6	-	-	-	56.4	78.0
<i>University Operations Services</i>	96.1	1.0	58.1	-	-	-	418.7	573.9
VP Development & Alumni Affairs	110.4	-	62.9	-	-	-	-	173.3
<i>Fund Raising Campaigns</i>	53.7	-	34.1	-	-	-	-	87.8
VP Finance	163.2	-	149.5	-	-	-	-	312.7
VP General Counsel	51.3	-	28.2	-	-	-	56.0	135.5
<i>Security</i>	-	-	-	-	-	-	11.7	11.7
VP Government, Community and Public Affairs								
Public Affairs	25.8	-	18.7	-	-	-	-	44.5
University Library	66.3	-	38.2	-	-	3.5	-	108.0
Subtotal	1,223.8	3.6	798.5	1.6	0.2	3.5	913.5	2,944.7
Non-Departmental & Special ⁽⁵⁾	49.5	-	48.4	-	-	-	-	97.9

(1) Administrative and Professional figures include some persons on faculty payrolls who hold administrative positions.

Figures do not include temporary employees (except limited regular guards and custodians), students or teaching fellows.

Counts include only filled positions.

(2) Additional personnel on local data systems are not included in this count.

(3) Core departments provide central functions of the University (accounts payable, HR benefits etc.) and are supported through funds from the President, Faculties, and departments. Service departments derive their revenue on a fee-for-service basis from internal customers.

(4) University Information Services includes Harvard Printing and Publishing Services.

(5) Non-Departmental and Special include Signet Society, Credit Union, Harvard Student Agencies, LASPAU and some interdepartmental personnel.

SOURCE: HUMAN RESOURCE PERSONNEL/PAYROLL DATABASE

Tuition Charges: FY1983 - FY2003 ⁽¹⁾

Fiscal Year	College	GSAS	Business	Design	Divinity	Education	Government ⁽²⁾	Law	Medical/ Dental ⁽³⁾	Public Health
1983	\$7,931	\$7,931	\$8,000	\$7,700	\$5,310	\$7,680	\$7,636	\$6,900	\$10,250	\$7,086
1984	8,752	8,752	9,000	8,600	5,790	8,320	8,367	7,900	11,200	7,667
1985	9,500	9,500	10,000	9,500	6,200	8,928	9,200	8,800	12,100	8,300
1986	10,266	10,266	10,750	10,165	6,640	9,552	9,840	9,650	13,100	8,826
1987	11,040	11,040	11,900	10,850	7,100	10,176	10,440	10,700	14,000	9,600
1988	11,645	11,645	13,300	11,500	7,600	10,752	11,075	11,400	14,850	10,575
1989	12,310	12,310	14,250	12,250	8,100	11,440	11,800	12,307	15,750	11,470
1990	13,085	13,085	15,350	13,110	8,630	12,232	12,570	13,400	16,850	12,515
1991	13,960	13,960	16,400	14,300	9,200	13,152	13,390	14,475	18,030	13,570
1992	14,860	14,860	17,500	15,450	9,940	14,192	14,662	15,560	19,110	14,790
1993	15,870	15,870	18,550	16,650	10,540	15,044	15,690	16,730	20,257	15,675
1994	16,856	16,856	19,750	17,483	11,070	15,796	16,631	17,750	21,260	16,775
1995	17,851	17,851	21,000	18,360	11,630	16,664	17,710	19,080	22,300	17,770
1996	18,838	18,838	22,700	19,276	12,220	17,581	18,650	20,500	23,192	18,840
1997	19,770	19,770	23,840	20,240	12,830	18,460	19,770	21,700	24,150	19,800
1998	20,600	20,600	25,000	21,252	13,480	19,476	20,720	22,800	25,200	20,890
1999	21,342	21,342	26,260	22,208	14,160	20,430	21,656	23,900	26,000	21,895
2000	22,054	22,054	27,250	23,163	14,870	21,410	22,520	25,000	27,000	22,950
2001	22,694	22,694	28,500	24,159	15,620	22,600	23,400	26,000	28,000	23,980
2002	23,457	23,370	30,050	25,195	16,400	23,720	24,320	27,500	29,000	25,050
2003	\$24,630	\$24,630	\$31,800	\$26,330	\$17,220	\$25,144	\$26,488	\$29,500	\$30,500	\$26,300

Average Annual Growth Rates

	College	GSAS	Business	Design	Divinity	Education	Government	Law	Medical/ Dental	Public Health
20 YEAR	5.8%	5.8%	7.1%	6.3%	6.1%	6.1%	6.4%	7.5%	5.6%	6.8%
10 YEAR	4.5%	4.5%	5.5%	4.7%	5.0%	5.3%	5.4%	5.8%	4.2%	5.3%
5 YEAR	3.6%	3.6%	4.9%	4.4%	5.0%	5.2%	5.0%	5.3%	3.9%	4.7%
1 YEAR	5.0%	5.4%	5.8%	4.5%	5.0%	6.0%	8.9%	7.3%	5.2%	5.0%

(1) All amounts exclude the University Health Service fee.

(2) In FY03, the School of Government implemented two tuition rate increases, one for 1st year students (shown above) and one for returning students (\$25,440).

(3) FY99 Dental School tuition is \$26,050.

SOURCE: ANNUAL TUITION PROPOSALS APPROVED BY THE CORPORATION.

Comparative Undergraduate Tuition and Fees ⁽¹⁾

Ranked in descending order for FY2003

Institution	Actual		Change FY2002 - 2003		Notes	
	FY2002	FY2003	Percent	Nominal	FY2002	FY2003
Columbia Total	\$35,190	\$36,752	4.4%	\$1,562		
Tuition	26,446	27,706	4.8%	1,260		
Mandatory Fees	462	500	8.2%	38	Student Life Fee: \$462	Student Life Fee: \$500
Room & Board	8,282	8,546	3.2%	264		
Penn. Total	\$34,762	\$36,368	4.6%	\$1,606		
Tuition	24,146	25,234	4.5%	1,088	General Fee: \$2,144	General Fee: \$2,222
Mandatory Fees	2,632	2,910	10.6%	278	Tech Fee: \$488	Tech Fee: \$488
Room & Board	7,984	8,224	3.0%	240		Rec Fee: \$200
Brown Total	\$34,750	\$36,356	4.6%	\$1,606		
Tuition	27,048	28,352	4.8%	1,304		
Mandatory Fees	124	128	3.2%	4	Activity Fee: \$124	Activity Fee: \$128
Room & Board	7,578	7,876	3.9%	298		
Cornell Total	\$34,614	\$36,322	4.9%	\$1,708		
Tuition	25,970	27,270	5.0%	1,300		
Mandatory Fees	92	124	34.8%	32	Activity Fee: \$92	Activity Fee: \$124
Room & Board	8,552	8,928	4.4%	376		
Stanford Total	\$34,430	\$36,123	4.9%	\$1,693		
Tuition	25,917	27,204	5.0%	1,287	Associated Students	Associated Students
Mandatory Fees	209	239	14.4%	30	of Stanford Univ. \$209	of Stanford Univ. \$239
Room & Board	8,304	8,680	4.5%	376		
MIT Total	\$34,460	\$36,060	4.6%	\$1,600		
Tuition	26,960	28,030	4.0%	1,070		
Mandatory Fees	-	200	-	200		Activity Fee: \$200
Room & Board	7,500	7,830	4.4%	330		
Dartmouth Total	\$34,458	\$35,988	4.4%	\$1,530		
Tuition	26,400	27,600	4.5%	1,200		
Mandatory Fees	162	171	5.6%	9	Activity Fee: \$162	Activity Fee: \$171
Room & Board	7,896	8,217	4.1%	321		
Harvard Total	\$34,269	\$35,950	4.9%	\$1,681		
Tuition	24,273	25,650	5.7%	1,377	Student Services	Student Services
Mandatory Fees	1,746	1,798	3.0%	52	Fee: \$1,746	Fee: \$1,798
Room & Board	8,250	8,502	3.1%	252		
Princeton Total ⁽²⁾	\$34,193	\$35,572	4.0%	\$1,379		
Tuition	26,160	27,230	4.1%	1,070		
Mandatory Fees	450	500	11.1%	50	Activity Fee: \$450	Activity Fee: \$500
Room & Board	7,583	7,842	3.4%	259	(Fresh, Soph & some Jr.)	(Fresh, Soph & some Jr.)
Yale Total	\$34,030	\$35,370	3.9%	\$1,340		
Tuition	26,100	27,130	3.9%	1,030		
Room & Board	7,930	8,240	3.9%	310		

(1) For comparative purposes, the health service fee is included in the tuition amount shown for all schools, with the following exception:

Cornell's health fee (\$955 in FY02 and \$1,041 in FY03), is optional and excluded.

(2) Princeton does not include its mandatory fee as part of its announced package. The mandatory fee has been included in the FY02 and FY03 totals for consistency and comparison.

SOURCE: INTERNAL SURVEY

Undergraduate Tuition Over Time: FY1983 - FY2003

Fiscal Year	Undergraduate Package					Economic Indicators ⁽¹⁾					
	Tuition ⁽²⁾	Room	Board	Student Services		U.S. CPI-U	Boston CPI-U	GDP IP Deflator (1996=100)	HEPI (1983=100)	Disposable Personal Income	Median Family Income Ages 45-54
				Fee	Total						
1983	\$8,195	\$1,430	\$1,850	\$625	\$12,100	98.2	98.0	68.0	100.0	\$10,364	\$30,727
1984	9,035	1,555	1,895	665	13,150	101.8	102.0	70.5	104.8	11,036	32,592
1985	9,800	1,635	1,925	740	14,100	105.8	106.6	73.0	110.8	12,215	34,482
1986	10,590	1,750	1,980	780	15,100	108.8	111.2	74.8	116.3	12,941	36,653
1987	11,390	1,885	2,035	835	16,145	111.2	113.9	76.6	120.9	13,555	38,861
1988	12,015	2,065	2,145	875	17,100	115.8	120.2	79.0	126.2	14,246	41,413
1989	12,715	2,400	2,145	950	18,210	121.2	127.8	82.1	132.8	15,312	42,192
1990	13,545	2,560	2,275	1,015	19,395	127.0	134.3	85.1	140.8	16,235	46,101
1991	14,450	2,700	2,425	1,080	20,655	133.9	142.3	88.5	148.1	17,176	47,164
1992	15,410	2,900	2,620	1,150	22,080	138.2	146.6	90.8	153.4	17,664	49,606
1993	16,454	3,075	2,765	1,220	23,514	142.5	151.1	92.9	157.9	18,524	50,079
1994	17,470	3,225	2,910	1,275	24,880	146.2	153.5	95.2	163.3	18,979	52,034
1995	18,485	3,370	3,040	1,335	26,230	150.4	156.7	97.2	168.3	19,624	54,379
1996	19,472	3,510	3,200	1,393	27,575	154.5	160.6	99.7	173.3	20,358	55,029
1997	20,424	3,659	3,336	1,477	28,896	158.9	165.7	100.8	178.6	21,069	57,161
1998	21,266	3,808	3,470	1,536	30,080	161.7	169.6	102.6	184.9	21,887	59,959
1999	22,028	3,940	3,574	1,590	31,132	164.5	173.2	103.9	189.1	23,037	61,833
2000	22,765	4,072	3,685	1,642	32,164	169.3	179.3	105.8	196.9	23,749	65,303
2001	23,439	4,190	3,792	1,689	33,110	175.1	187.6	108.2	206.5	25,237	68,082
2002	24,273	4,331	3,919	1,746	34,269	178.2	193.3	110.1	216.4	25,957	68,114
2003	\$25,650	\$4,461	\$4,041	\$1,798	\$35,950	182.1	200.0	111.5	221.9	\$27,170	n/a

Average Annual Growth Rates

	Undergraduate Package					Economic Indicators ⁽¹⁾					
	Tuition ⁽²⁾	Room	Board	Student Services		U.S. CPI-U	Boston CPI-U	GDP IP Deflator (1996=100)	HEPI (1983=100)	Disposable Personal Income	Median Family Income Ages 45-54
				Fee	Total						
20 YEAR	5.9%	5.9%	4.0%	5.4%	5.6%	3.1%	3.6%	2.5%	4.1%	4.9%	n/a
10 YEAR	4.5%	3.8%	3.9%	4.0%	4.3%	2.5%	2.8%	1.8%	3.5%	3.9%	n/a
5 YEAR	3.8%	3.2%	3.1%	3.2%	3.6%	2.4%	3.4%	1.7%	3.7%	4.4%	n/a
1 YEAR	5.7%	3.0%	3.1%	3.0%	4.9%	2.2%	3.5%	1.3%	2.5%	4.7%	n/a

(1) Economic indicators are averages of all index figures for the fiscal year. HEPI is based on a fiscal year, all other indexes are based on the calendar year.

(2) Tuition figure includes mandatory health service fee.

SOURCE: BUREAU OF LABOR STATISTICS, BUREAU OF ECONOMIC ANALYSIS AND ECONOMIC INDICATORS PUBLICATION.

Degree Student Financial Assistance: FY2002 ⁽¹⁾

Expressed in thousands of dollars

	GRANTS				As a % of Total for School
	Institutional	Federal	Other Outside	Total	
College	\$57,811	\$5,460	\$11,041	\$74,312	75%
GSAS	41,826	14,454	5,019	61,299	68%
Business	9,438	-	1,395	10,832	18%
Dental	426	-	411	837	14%
Design	3,352	-	198	3,550	35%
Divinity	4,746	-	144	4,890	55%
Education	5,912	98	1,034	7,044	38%
Government	9,104	-	7,755	16,859	65%
Law	10,402	-	551	10,953	23%
Medical	5,437	324	4,727	10,488	50%
Public Health	3,023	3,358	2,595	8,976	68%
Extension	463	100	36	599	22%
ART	120	-	-	120	11%
TOTAL	\$152,060	\$23,794	\$34,904	\$210,758	52%

Grants

Institutional grants are from University unrestricted and restricted monies.

Federal grants include all Federal programs in each school including programs such as the Pell grant, SEOG or graduate training grants.

Outside grants include state and private support of students. In some schools, these numbers may include corporate sponsorship or other sponsored billing.

	LOANS				As a % of Total for School
	Institutional	Federal	Other Outside	Total	
College	\$2,219	\$8,096	\$6,872	\$17,187	17%
GSAS	-	1,147	97	1,244	1%
Business	4,012	15,298	30,806	50,117	82%
Dental	255	4,196	651	5,102	85%
Design	-	5,009	328	5,336	53%
Divinity	-	3,126	-	3,126	35%
Education	50	9,248	1,442	10,740	58%
Government	-	5,937	2,436	8,372	32%
Law	2,652	23,789	8,580	35,021	74%
Medical	1,305	8,828	361	10,494	50%
Public Health	-	3,756	354	4,111	31%
Extension	-	1,685	503	2,187	78%
ART	166	596	234	996	87%
TOTAL	\$10,659	\$90,711	\$52,663	\$154,033	38%

Loans

Institutional loans are made to students from University capital without Federal guarantee.

Federal loan programs may involve capital from Harvard, or other private or Federal sources, loaned under Federal sponsorship.

Outside loans include private capital loaned to students or parents. Personal loans are not included here.

	EMPLOYMENT			As a % of Total for School	TOTAL Grant, Loans & Employment
	Work-Study (CWSP)	Other Term	Total		
College	\$1,517	\$6,724	\$8,240	8%	\$99,739
GSAS	587	26,894	27,481	31%	90,024
Business	-	-	-	0%	60,949
Dental	7	53	60	1%	5,998
Design	1,044	87	1,131	11%	10,018
Divinity	815	-	815	9%	8,831
Education	587	46	632	3%	18,416
Government	239	546	785	3%	26,016
Law	595	624	1,219	3%	47,193
Medical	69	-	69	0%	21,051
Public Health	69	-	69	1%	13,155
Extension	-	-	-	0%	2,787
ART	-	25	25	2%	1,141
TOTAL	\$5,528	\$34,999	\$40,527	10%	\$405,318

Employment

Work-Study is a Federally-sponsored partnership with colleges and universities to provide students with the opportunity to work while in school.

Other term earnings reflect on-campus earnings by students who are not part of the work-study program. Jobs include casual employment, teaching fellowships, research assistantships and resident tutors.

(1) Does not include the Law School, Business School or the School of Government funding for graduates in the Low Income Protection Plan/Loan Repayment Assistance Programs.

SOURCE: INTERNAL SURVEY

Federal Sponsored Research: FY2001 - FY2002

Expressed in thousands of dollars

	FY2001			FY2002			Change in Total Exp. 2001/2002	FY2002 Indirect as % of Total
	Direct Costs	Indirect Costs	Total Costs	Direct Costs	Indirect Costs	Total Costs		
ACADEMIC DEPARTMENTS								
FAS								
Arts & Sciences	\$42,151	\$17,347	\$59,498	\$44,603	\$18,194	\$62,797	5.5%	29.0%
Division of Engineering and Applied Sciences	15,885	6,409	22,294	19,181	7,990	27,171	21.9%	29.4%
Harvard College Library	71	5	75	89	7	96	27.8%	7.4%
Museum of Comparative Zoology/Peabody Museum	1,861	563	2,423	2,184	601	2,785	14.9%	21.6%
College Life, Athletics, Grad Dorms	-	-	-	-	-	-	-	-
FAS Subtotal	\$59,967	\$24,324	\$84,291	\$66,057	\$26,791	\$92,848	10.2%	28.9%
School of Business Administration	-	-	-	-	-	-	-	-
School of Dental Medicine	3,345	871	4,215	3,085	817	3,902	(7.4%)	20.9%
School of Design	1,690	563	2,253	1,405	365	1,770	(21.4%)	20.6%
Divinity School	-	-	-	-	-	-	-	-
Graduate School of Education	3,975	848	4,824	6,010	1,000	7,011	45.3%	14.3%
JFK School of Government	5,051	1,899	6,951	7,364	2,400	9,764	40.5%	24.6%
Law School	141	29	170	269	52	321	89.2%	16.1%
Medical School	95,494	42,259	137,753	114,168	48,160	162,328	17.8%	29.7%
School of Public Health	74,966	26,376	101,342	83,816	31,457	115,273	13.7%	27.3%
Radcliffe Institute for Advanced Study	150	55	206	220	108	328	59.6%	33.0%
Other Faculties Subtotal	\$184,812	\$72,900	\$257,712	\$216,338	\$84,358	\$300,696	16.7%	28.1%
Other Academic Departments ⁽¹⁾	\$5,078	\$1,132	\$6,209	\$219	\$41	\$260	(95.8%)	15.8%
Service and Other Departments ⁽²⁾	\$459	\$114	\$573	\$258	\$72	\$330	(42.4%)	21.9%
GRAND TOTAL ⁽³⁾	\$250,316	\$98,470	\$348,785	\$282,872	\$111,262	\$394,135	13.0%	28.2%

(1) Includes Arnold Arboretum, Harvard Institute for International Development (FY01), Harvard University Art Museums, Nieman Foundation, Joint Center for Housing Studies and Villa I Tatti.

(2) Includes Central Administration, Memorial Church, University Library and University Health Services.

(3) Totals include both Federal and Federal Once-Removed (Federal Once-Removed total cost for FY2001 is \$34,578 and for FY2002 is \$42,937). Totals exclude financial aid.

SOURCE: OFFICE OF SPONSORED RESEARCH - FINANCIAL SERVICES

Federal Research by Agency: FY2001 - FY2002

Expressed in thousands of dollars

	Total Expenditures			FY2002 Total as % of
	FY2001	FY2002	% Change	Federal Total
Department of Health & Human Services				
National Institutes of Health	\$241,567	\$283,112	17.2%	71.8%
Other DHHS	19,109	18,549	(2.9%)	4.7%
Subtotal	\$260,676	\$301,661	15.7%	76.5%
Department of Defense				
Department of the Navy	5,476	5,246	(4.2%)	1.3%
Department of the Army	4,285	5,926	38.3%	1.5%
Department of the Air Force	2,350	3,515	49.6%	0.9%
Defense Advanced Research Projects Agency ⁽¹⁾	1,505	1,882	25.1%	0.5%
Subtotal	\$13,615	\$16,569	21.7%	4.2%
National Science Foundation	28,087	32,665	16.3%	8.3%
Nat'l. Aeronautics & Space Administration	9,339	9,803	5.0%	2.5%
Department of Energy	8,428	8,751	3.8%	2.2%
Department of Education	5,514	6,634	20.3%	1.7%
Agency for International Development	8,490	4,286	(49.5%)	1.1%
Environmental Protection Agency	4,398	4,025	(8.5%)	1.0%
Department of Justice	3,544	2,884	(18.6%)	0.7%
Department of Housing and Urban Development	1,842	1,964	6.6%	0.5%
Department of State	1,157	1,581	36.7%	0.4%
Department of Commerce	510	802	57.3%	0.2%
Nat'l. Endowment for the Humanities	981	613	(37.5%)	0.2%
Department of Agriculture	503	336	(33.3%)	0.1%
Department of Veterans Affairs	267	327	22.6%	0.1%
Department of Transportation	208	304	46.2%	0.1%
Central Intelligence Agency	448	284	(36.6%)	0.1%
General Services Administration	(16)	14	182.3%	0.0%
National Endowment for the Arts	179	3	(98.6%)	0.0%
Other ⁽²⁾	615	630	2.4%	0.2%
GRAND TOTAL ⁽³⁾	\$348,785	\$394,135	13.0%	100.0%

(1) Includes Other - Department of Defense.

(2) Other includes U.S. Information Agency, and 10 other Federal Agencies.

(3) Totals include both Federal and Federal Once-Removed (Federal Once-Removed total cost for FY2001 is \$34,578 and for FY2002 is \$42,937). Totals exclude financial aid.

SOURCE: OFFICE OF SPONSORED RESEARCH - FINANCIAL SERVICES

Non-Federal Sponsored Research: FY2001 - FY2002

Expressed in thousands of dollars

	FY2001			FY2002			Change in Total Exp. 2001/2002	FY2002 Indirect as % of Total
	Direct Costs	Indirect Costs	Total Costs	Direct Costs	Indirect Costs	Total Costs		
ACADEMIC DEPARTMENTS								
FAS								
Arts & Sciences ⁽¹⁾	\$10,700	\$413	\$11,113	\$10,157	\$378	\$10,534	(5.2%)	3.6%
Division of Continuing Education	-	-	-	-	-	-	-	-
Division of Engineering and Applied Sciences	1,770	299	2,069	367	101	468	(77.4%)	21.5%
Harvard College Library	21	-	21	54	-	54	153.6%	0.0%
Museum of Comparative Zoology/ Peabody Museum	184	6	190	202	6	207	9.3%	2.8%
College Life, Athletics, Grad Dorms	11	1	12	12	0	12	0.0%	1.7%
FAS Subtotal	\$12,686	\$719	\$13,404	\$10,790	\$484	\$11,275	(15.9%)	4.3%
School of Business Administration	-	-	-	167	6	173	-	3.2%
School of Dental Medicine	619	232	851	344	115	459	(46.1%)	25.1%
School of Design	138	19	157	111	(2)	109	(30.8%)	(1.7%)
Divinity School	774	56	830	304	37	341	(59.0%)	10.9%
Graduate School of Education	9,043	647	9,690	9,242	674	9,916	2.3%	6.8%
JFK School of Government	20,213	2,483	22,696	20,780	2,750	23,530	3.7%	11.7%
Law School	3,055	171	3,225	2,802	139	2,940	(8.8%)	4.7%
Medical School	54,948	5,420	60,368	42,273	4,923	47,197	(21.8%)	10.4%
School of Public Health	20,603	3,069	23,672	26,089	3,438	29,526	24.7%	11.6%
Radcliffe Institute for Advanced Study	531	19	550	756	46	802	45.9%	5.7%
Other Faculties Subtotal	\$109,923	\$12,117	\$122,039	\$102,867	\$12,125	\$114,992	(5.8%)	10.5%
Other Academic Departments ⁽²⁾	\$1,319	\$421	\$1,740	\$735	\$55	\$790	(54.6%)	6.9%
Service and Other Departments ⁽³⁾	\$1,158	\$122	\$1,281	\$809	\$103	\$912	(28.8%)	11.3%
GRAND TOTAL ⁽⁴⁾	\$125,086	\$13,378	\$138,464	\$115,202	\$12,768	\$127,970	(7.6%)	10.0%

(1) As of July 1, 2001, Dumbarton Oaks is included in Arts and Sciences.

(2) Includes Arnold Arboretum, Dumbarton Oaks (FY01), Harvard Institute for International Development (FY01), Harvard University Art Museums, Nieman Foundation, Joint Center for Housing Studies and Villa I Tatti.

(3) Includes Central Administration, Memorial Church, University Library and University Health Services.

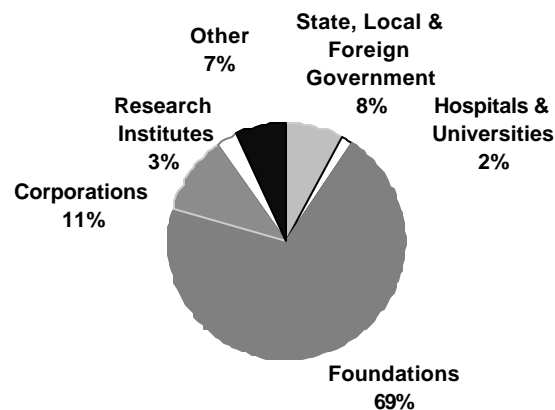
(4) Total excludes financial aid expenditures.

SOURCE: OFFICE OF SPONSORED RESEARCH - FINANCIAL SERVICES

Expenditures under Non-Federal Sponsored Research by Sponsor Source: FY2002

Expressed in thousands of dollars

	Hospitals & Other Universities	State, Local, & Foreign Government	Foundations	Corporations	Research Institutes	Other Sources	Total
FAS							
Faculty of Arts & Sciences	\$460	\$135	\$9,035	\$238	\$309	\$357	\$10,534
Division of Engineering and Applied Sciences	25	-	608	758	(922)	-	468
Harvard College Library	-	-	54	-	-	-	54
Museum of Comp. Zoology/Peabody Museum	-	-	208	-	-	-	208
College Life, Athletics, Grad Dorms	12	-	-	-	-	-	12
FAS Subtotal	\$497	\$135	\$9,904	\$995	(\$613)	\$357	\$11,275
School of Business Administration	-	-	173	-	-	-	173
School of Dental Medicine	-	-	99	335	-	25	459
School of Design	-	16	118	-	-	(26)	109
Divinity School	33	-	308	-	-	-	341
Graduate School of Education	233	997	8,079	207	178	222	9,916
JFK School of Government	64	2,646	15,939	1,269	-	3,613	23,530
Law School	-	-	2,716	218	-	6	2,940
Medical School	454	4,066	29,331	7,411	2,594	3,341	47,197
School of Public Health	891	1,966	20,776	3,044	1,593	1,257	29,526
Radcliffe Institute for Advanced Study	-	-	786	16	-	-	802
Other Faculties Subtotal	\$1,675	\$9,690	\$78,324	\$12,500	\$4,364	\$8,440	\$114,992
Other Academic Departments ⁽¹⁾	-	\$15	\$743	-	-	\$32	\$790
Service and Other Departments ⁽²⁾	-	-	\$532	\$380	-	-	\$912
GRAND TOTAL	\$2,172	\$9,840	\$89,503	\$13,875	\$3,751	\$8,828	\$127,969



(1) Includes Arnold Arboretum, Harvard University Art Museums, Nieman Foundation, Joint Center for Housing Studies and Villa I Tatti.

(2) Includes Central Administration, University Library and University Health Services.

SOURCE: OFFICE OF SPONSORED RESEARCH - FINANCIAL SERVICES

Historical Funding of Research by Sponsor

Expressed in thousands of dollars

Federal (Prime and Once-Removed)

	Fiscal Year				
	1998	1999	2000	2001	2002
National Institutes of Health	\$182,210	\$199,681	\$218,137	\$241,567	\$283,112
National Science Foundation	24,176	23,904	25,587	28,087	32,665
Other DHHS	10,223	12,705	14,308	19,109	18,549
Department of Defense	12,616	14,436	15,962	13,615	16,569
Nat'l. Aeronautics & Space Administration	8,421	9,524	10,246	9,339	9,803
Department of Energy	8,267	8,178	8,649	8,428	8,751
Department of Education	4,093	5,246	6,045	5,514	6,634
Agency for International Development	25,502	18,660	15,650	8,490	4,286
Environmental Protection Agency	2,839	3,218	4,446	4,398	4,025
Department of Justice	2,483	2,666	3,187	3,544	2,884
National Endowment for the Humanities	1,077	1,264	1,212	981	613
Other ⁽¹⁾	6,689	5,610	5,130	5,713	6,244
Federal Total	\$288,597	\$305,092	\$328,560	\$348,785	\$394,135

Non-Federal

	1998	1999	2000	2001	2002
Foundations	\$41,517	\$50,196	\$56,950	\$92,557	\$89,503
Corporations	12,014	15,026	15,471	18,425	13,875
State, Local & Foreign Government	15,244	11,815	14,015	9,944	9,840
Other Sources	9,574	12,141	9,779	10,028	8,828
Research Institutes	4,907	5,692	4,426	5,580	3,751
Hospitals & Other Universities	2,595	1,888	1,579	1,930	2,172
Non-Federal Total	\$85,850	\$96,758	\$102,220	\$138,464	\$127,970
Grand Total	\$374,447	\$401,849	\$430,780	\$487,249	\$522,104

Growth in Sponsored Projects

Expressed in millions of dollars

Fiscal Year	Expenditure Actual \$	% Change	Expressed	
			as FY02 \$	% Change in FY02 \$
1998	\$374.4	-	\$412.5	-
1999	401.8	7.3%	435.1	5.5%
2000	430.8	7.2%	453.4	4.2%
2001	487.2	13.1%	495.9	9.4%
2002	\$522.1	7.2%	\$522.1	5.3%

(1) Other includes National Institute of Standards and Technology, National Oceanic & Atmospheric Admin., U.S. Information Agency, and 10 other Federal Agencies. Agencies listed are for FY2002. Information on agencies in prior years can be obtained from the Office of Sponsored Research.

Harvard University Library System

Harvard's Library is a system or federation of more than 90 library units, ranging in collection size from a few hundred volumes to several million volumes. Its mission is to support the University's teaching and research activities by acquiring, organizing, preserving, and making available library collections in all media and formats; by providing intellectual access to materials and information outside the University; and by providing facilities and services for research and study. This system of separate institutions with shared responsibilities works cooperatively to serve the needs of teachers, researchers and students throughout the University.

The University Library (HUL) is a department of the Central Administration headed by the Pforzheimer University Professor and Director. It coordinates efforts and provides central services critical to the library system. The programs include:

Office for Information Systems - Oversees, plans and maintains the on-line catalog and other bibliographic databases

Weisman Preservation Center and Special Collections Conservation - Reformats brittle at-risk books and works to conserve and restore special collections

University Archives and Administrative Records Management - Holds the historical record of the University and other special collections

Harvard Depository - An off-site, state-of-the-art storage and retrieval facility in Southborough, MA

Digital Initiative - a multi-year effort to develop an operational infrastructure to integrate digital materials

HUL Administration - Provides administrative services to the departments of HUL, publishes internal organs, newsletters, and a quarterly scholarly journal, and addresses external relations

The books and pamphlets recorded here constitute only a portion of the Library's collections. Some of the other holdings throughout the library system include:

-Microfilm holdings - reels, microcards, microfiches, and microprint sheets - exceed 5.5 million

-Manuscripts make up most of the University Archives and there are large collections in other units, notably the Law School Library (1.5 million) and the Houghton Library (4 to 5 million items)

-Ephemera - the Theatre Collection contains more than 5 million items (playbills, photographs, etc.); other ephemera in the Houghton fill about 4,000 running feet of shelving

-Visual collections of the Fine Arts Library include over 1.6 million items and number over 5 million University wide

-Sound recordings in the Loeb Music Library number nearly 65,000

-Maps housed in the map collections of the Harvard College Library in Pusey and in the Kummel Geological Sciences Library exceed 500,000.

Summary of University Library Growth and Expenditures FY2002

	Collections Increase ⁽¹⁾			Expenditures (in \$000's) ⁽²⁾					
	Gross	Net	Volumes & Pamphlets	Salaries & Wages	Benefits	Books & Other	Binding	Other Costs	Total
						Materials			
University Library (HUL)	665	665	114,425	\$5,818	\$1,516	\$3	\$-	\$6,916	\$14,252
Faculty of Arts & Sciences									
Central Collections	179,196	158,211	9,030,233	25,201	6,589	13,168	671	17,819	63,449
House Libraries	36	(17)	151,863	139	4	16	0	7	165
Departmental & Divisional Libraries	6,549	6,013	349,627	832	194	2,061	49	274	3,410
Special & Research Libraries	21,269	17,882	1,116,120	3,641	964	1,673	103	1,145	7,527
Graduate Faculty Libraries	70,932	59,270	4,095,147	16,071	3,999	8,726	378	7,749	36,923
Less Duplication	-	-	-	-	-	-	-	(5,452)	(5,452)
University Library Totals	278,647	242,024	14,857,415	\$51,702	\$13,266	\$25,647	\$1,201	\$28,459	\$120,275

(1) Net increase refers to the increase in volumes after accounting for replacement of previously-owned volumes.

(2) Due to rounding, expenditures may be slightly different than reported in the Library Annual Report.

SOURCE: HARVARD UNIVERSITY LIBRARY ANNUAL REPORT 2001-2002

Library Collections: FY2002

	Increase FY2002		Volumes & Pamphlets FY2002 ⁽¹⁾
	Gross	Net	
University Library			
University Archives	665	665	114,425
Library of the Faculty of Arts & Sciences (Harvard College Library)			
Central Collections			
Cabot	4,813	(873)	214,840
Fine Arts	6,677	6,643	308,201
Geological Sciences	384	384	66,581
Harvard - Yenching	26,556	26,556	1,037,411
Hilles	3,244	(2,497)	186,596
Houghton	5,890	5,854	469,860
Lamont	5,213	4,760	197,232
Littauer	370	(6,208)	425,568
Loeb Music	4,260	3,960	152,676
Social Sciences Program	1,729	(370)	30,850
Tozzer (Peabody Museum)	3,725	3,712	234,127
Widener	116,335	116,290	5,706,291
House Libraries ⁽²⁾	36	(17)	151,863
Departmental & Divisional Libraries ⁽³⁾	6,549	6,013	349,627
Special Office and Research Libraries			
Biblioteca Berenson	5,445	5,445	132,569
Botany Libraries	3,352	3,349	278,147
Career Reference	205	(666)	5,289
Center for Astrophysics: Wolbach Library	1,496	1,274	73,373
Center for European Studies	515	515	12,589
Center for Hellenic Studies	952	951	51,921
Center for International Affairs	515	515	12,589
Center for Middle Eastern Studies ⁽⁴⁾	-	-	-
Dumbarton Oaks Research Library	3,202	3,059	180,376
Fairbank Research Center	1,000	800	25,800
Gibb Islamic Seminar	34	34	7,536
Grossman Library for University Extension	202	105	6,376
Harvard Forest in Petersham	-	-	11,678
Harvard Planning Information Research Center	28	28	778
Health Services: John Peabody Monks	-	-	450
Milman Parry Collection of Oral Literature	2	2	1,802
Museum of Comparative Zoology	2,577	2,577	284,858
Nieman Collection of Contemporary Journalism	916	916	2,885
Davis Center (formerly Russian Research Center)	719	(1,127)	18,306
Ukrainian Research Institute: Reference	32	32	3,268
University Development Office	60	56	5,253
Faculty Libraries			
Business: Baker Library	6,782	6,108	626,544
Design: Frances L. Loeb	4,243	3,293	277,109
Divinity: Andover - Harvard Theological	6,864	5,819	462,686
Education: Monroe C. Gutman	2,355	1,994	197,417
JFK School of Government ⁽⁵⁾	2,939	423	60,697
Law School	32,568	27,390	1,665,989
Medicine, Public Health and Dental Medicine			
Center for Population Studies	376	374	15,127
Francis A. Countway Library of Medicine	12,099	11,163	695,203
New England Primate Research Center	314	314	14,152
Henry A. Murray Research Center	17	17	277
Radcliffe Institute for Advanced Study			
Schlesinger Library on History of American Women	2,392	2,392	80,223
TOTAL UNIVERSITY COLLECTION	278,647	242,024	14,857,415

(1) Volumes and Pamphlets for individual libraries include volumes transferred to the Depository. Totals reflect corrections in count.

(2) Includes Adams, Cabot, Currier, Dudley, Dunster, Eliot, Kirkland, Leverett, Lowell, Mather, Pforzheimer, Quincy, Winthrop.

(3) Includes Afro-American Studies; Applied Sciences: Gordon McKay, Biochemical Sciences, Bio Labs; Celtic: F.N. Robinson; Chemistry; Classics: H.W. Smyth, Center on Contemporary Japan; English: Child Memorial; History; History of Science; Linguistics; Mathematics: G.D. Birkoff; Medieval Studies Library; Near Eastern Languages & Literatures; Paleography; Philosophy: Robbins; Physics; Psychology; Sanskrit & Indian Studies; Sociology & Social Relations; Statistics.

(4) Collection figures for the Center for Middle Eastern Studies were not received for FY 2002.

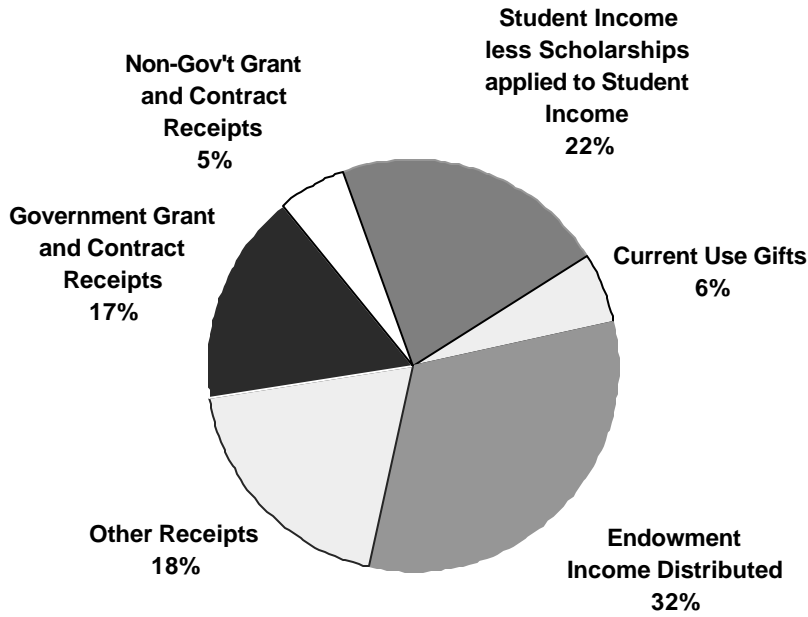
(5) Includes the Belfer Center for Science and International Affairs.

SOURCE: HARVARD UNIVERSITY LIBRARY ANNUAL REPORT 2001-2002

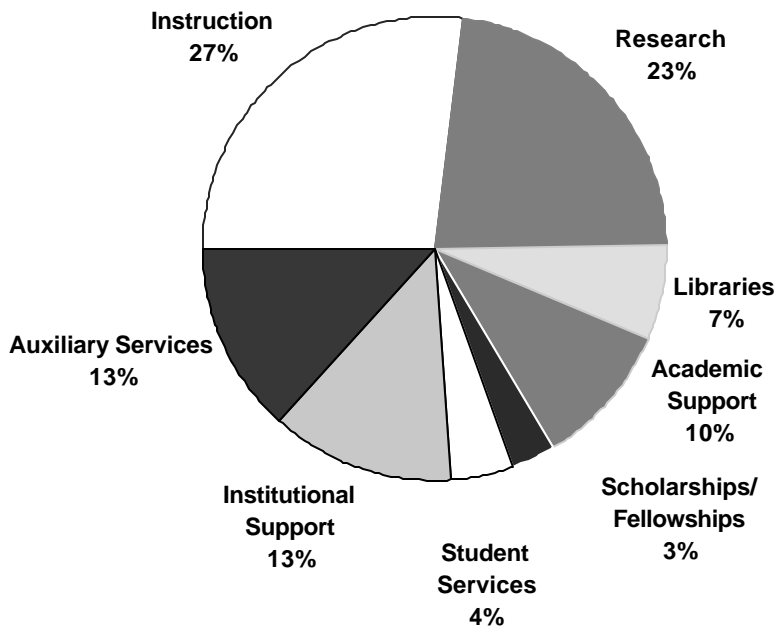
Total University Income and Expenses Year Ended June 30, 2002

Expressed in thousands of dollars

Total Income - \$2,357,022



Total Expenses - \$2,286,586



Departmental Operating Expenses Year Ended June 30, 2002

Expressed in thousands of dollars

	Salaries and Wages	Employee Benefits	Scholarships/ Student Awards
Faculty of Arts and Sciences			
Faculty of Arts and Sciences	\$252,703	\$51,225	\$110,260
Division of Continuing Education	14,241	2,519	3,291
FAS Museums	9,028	2,229	165
FAS Subtotal	\$275,972	\$55,973	\$113,716
School of Business Administration	106,623	23,771	9,755
School of Dental Medicine	9,895	2,236	1,206
Graduate School of Design	13,129	2,718	3,752
Divinity School	9,408	2,090	4,916
Graduate School of Education	27,442	5,913	5,670
School of Government	53,047	12,017	10,886
Law School	45,832	10,183	11,450
Medical School	128,516	28,349	33,911
Radcliffe Institute for Advanced Study	8,733	2,107	2,317
School of Public Health	66,506	14,960	10,275
Other Faculties Subtotal	\$469,131	\$104,344	\$94,138
Total Faculties	\$745,103	\$160,317	\$207,854
Arnold Arboretum	3,331	829	3
Harvard University Art Museums	8,424	2,194	111
Joint Center for Housing Studies	775	199	74
Nieman Foundation	921	235	1,014
Villa I Tatti	1,558	726	636
Other Academic Departments Subtotal	\$15,009	\$4,183	\$1,838
Service Departments	\$97,639	\$25,488	-
Memorial Church	\$986	\$213	-
Central Administration ⁽²⁾	\$69,206	\$11,690	\$5,343
TOTAL UNIVERSITY EXPENSES	\$927,943	\$201,891	\$215,035

(1) Includes expense credits and transfers.

(2) Includes FAS Fundraising and university funds.

SOURCE: FINANCIAL ADMINISTRATION FINANCE AND ACCOUNTING OFFICE

Less: Financial Aid Applied against Income	Equipment and Supplies	Space and Occupancy	Depreciation	Other Expenses ⁽¹⁾	Total Expenses
(\$83,246)	\$47,393	\$86,951	\$41,689	\$93,699	\$600,674
(3,266)	1,672	1,599	605	13,919	34,580
(1)	1,910	2,945	972	5,676	22,924
(\$86,513)	\$50,975	\$91,495	\$43,266	\$113,294	\$658,178
(8,227)	24,213	20,450	11,962	90,013	278,560
(720)	2,127	1,392	990	4,954	22,080
(3,283)	1,629	3,661	761	8,505	30,872
(4,143)	1,173	1,908	957	4,078	20,387
(4,256)	1,974	4,916	1,512	15,947	59,118
(7,690)	5,852	10,450	1,911	30,334	116,807
(9,763)	6,165	12,125	4,215	23,538	103,745
(13,049)	40,152	45,424	40,060	113,995	417,358
(36)	800	1,547	386	4,854	20,708
(4,755)	11,019	22,753	9,231	59,628	189,617
(\$55,922)	\$95,104	\$124,626	\$71,985	\$355,846	\$1,259,252
(\$142,435)	\$146,079	\$216,121	\$115,251	\$469,140	\$1,917,430
-	341	626	175	1,304	6,609
(64)	4,960	1,431	1,407	5,261	23,724
-	56	155	-	464	1,723
-	172	394	2	1,355	4,093
-	575	381	78	1,011	4,965
(\$64)	\$6,104	\$2,987	\$1,662	\$9,395	\$41,114
-	\$41,680	(\$6,657)	\$22,755	\$35,682	\$216,587
-	\$243	\$655	\$178	\$616	\$2,891
(\$2,383)	\$6,759	(\$7,759)	\$14,673	\$11,035	\$108,564
(\$144,882)	\$200,865	\$205,347	\$154,519	\$525,868	\$2,286,586

Physical Plant: FY2002

The University owns and operates more than five hundred buildings of varying sizes and characteristics, spread over a wide geographic area. They encompass approximately 20.8 million gross square feet of space. The physical plant provides living space for students and faculty, research facilities to advance our base of knowledge, classroom and library spaces for the dissemination of knowledge, and space for administrative and support services.

Location ⁽¹⁾	Gross Square Footage of		Principal Activity on Site
	Acres	Buildings (in 000's)	
Cambridge, MA	219	13,138	Main Campus
Boston, MA	22	2,409	Medical & Dental Schools, School of Public Health
Boston (Allston)	250	3,739	Business School; Printing and Publisher; Athletics; Other
Boston (Jamaica Plain)	233	42	Arnold Arboretum
Watertown, MA	29	828	Arsenal Buildings
Weston, MA	66	11	Case Estates (Arnold Arboretum)
Somerville, MA	2	16	Affiliated Housing
Medford, MA	1		
Bedford, MA	79	11	Concord Field Station
Carlisle, MA	69		Concord Field Station
Concord, MA	605		Field Station (Museum of Comparative Zoology)
Marlborough, MA	50		Animal Research Center (NERPC)
Southborough, MA	87	161	Harvard Depository
Petersham, MA	2,648	69	Harvard Forest (Forestry, Botany)
Hamilton, MA	99		Harvard Forest
Phillipston, MA	205		Harvard Forest
Royalston, MA	57		Harvard Forest
Harvard, MA	37	20	Agassiz Cottage (Observatory)
Shrewsbury, MA	6	16	Artemas Ward Homestead (Museum)
Kittery Point & Sutton Island, ME	n/a	12	Howells Memorial & Kendall Houses
Ledyard, CT	n/a	21	Red Top, Crew Quarters
Washington, DC	n/a	150	Dumbarton Oaks & Center for Hellenic Studies
Florence, Italy	n/a	94	Villa I Tatti - Ctr. for Italian Renaissance Studies
TOTAL	4,764	20,738	

(1) In addition to locations listed above, Harvard has numerous smaller holdings.

SOURCE: HARVARD PLANNING AND REAL ESTATE

Physical Plant: FY2002

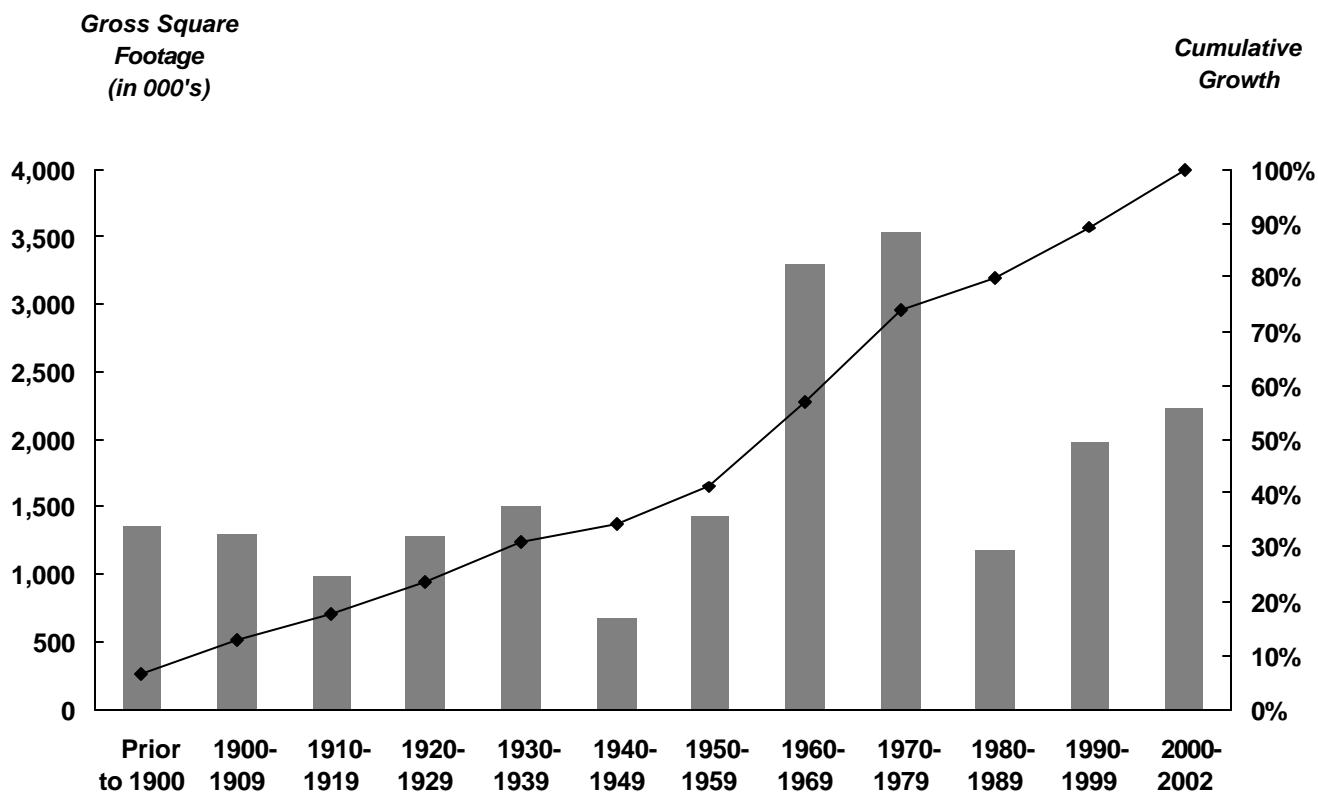
Building Ownership

	Number of Buildings	Gross Square Footage	
		of Buildings (in 000's)	As a % of Total
FAS	265	8,567	41.3%
Radcliffe	15	280	1.4%
Business	34	1,460	7.0%
Dental	2	52	0.3%
Design	2	179	0.9%
Divinity	7	180	0.9%
Education	6	215	1.0%
Government	4	264	1.3%
Law	19	920	4.4%
Medical	26	1,898	9.2%
Public Health	7	573	2.8%
Real Estate	160	5,310	25.6%
Central Administration	51	838	4.0%
TOTAL	598	20,738	100.0%

Primary Uses

	Gross Square Footage	
	of Buildings (in 000's)	As a % of Total
Residential/Dormitory	6,430	31.0%
Office/Classroom	4,903	23.6%
Lab/Studio	3,594	17.3%
Library	1,581	7.6%
Assembly/Museum	1,189	5.7%
Support	990	4.8%
Commercial	1,080	5.2%
Athletic	891	4.3%
Health Care	79	0.4%
TOTAL	20,738	100.0%

Additions to the Physical Plant



SOURCE: HARVARD PLANNING AND REAL ESTATE

Market Value of Endowment Funds as of June 30, 2002⁽¹⁾

Expressed in thousands of dollars

Individual Unit Value: \$914.78⁽²⁾

	Endowment Market Value ⁽¹⁾	Participating Units	Market Value % of Total
Arts and Sciences ⁽³⁾	\$7,902,050	8,624,619	46.6%
Business	1,192,032	1,288,944	7.0%
Dental	111,771	122,183	0.7%
Design	223,400	244,211	1.3%
Divinity	321,475	351,421	1.9%
Education	272,016	297,355	1.6%
Government ⁽⁴⁾	531,909	573,589	3.1%
Law	840,291	914,733	5.0%
Medical	1,913,922	2,091,207	11.3%
Radcliffe Institute for Advanced Study ⁽⁵⁾	256,352	280,121	1.5%
Public Health	587,200	641,900	3.5%
Other Academic Departments ⁽⁶⁾	683,920	744,458	4.0%
Central Administration ⁽⁷⁾	2,110,918	2,299,602	12.5%
Subtotal	\$16,947,256	18,474,343	100.0%
Pledge Balances	348,264	-	-
Interests in Perpetual Trusts held by Others	222,501	-	-
Total Endowment	\$17,518,021	18,474,343	100.0%

Historical Market Value of Endowment

	June 30, 1999	June 30, 2000	June 30, 2001
Arts and Sciences ⁽³⁾	\$6,075,041	\$7,991,004	\$7,673,418
Business	950,779	1,260,151	1,214,511
Dental	95,565	122,656	115,081
Design	196,755	251,413	236,345
Divinity	265,760	357,154	338,822
Education	215,422	286,659	284,855
Government ⁽⁴⁾	409,000	541,678	559,857
Law	717,799	926,076	877,192
Medical	1,607,976	2,095,204	1,993,657
Radcliffe Institute for Advanced Study ⁽⁵⁾	-	313,376	304,942
Public Health	508,973	652,862	616,604
Other Academic Departments ⁽⁶⁾	1,667,139	1,396,457	1,214,162
Central Administration ⁽⁷⁾	1,271,166	2,324,960	2,221,290
Subtotal	\$13,981,375	\$18,519,650	\$17,650,736
Pledge Balances	279,679	303,950	308,356
Interests in Perpetual Trusts held by Others	315,216	324,688	300,107
Less: Funds for Construction ⁽¹⁾	(40,595)	-	-
Total Endowment	\$14,535,675	\$19,148,288	\$18,259,199

(1) As of July 1, 1999, Funds for Construction have been removed from individual departmental balances.

(2) Market value also includes endowment funds that are not unitized. This accounts for the difference between (unit price x number of units) and market value.

(3) Arts and Sciences includes: Continuing Education, DEAS, College Library, Museums, GSAS, Athletics, and College Life and Student Services.

As of July 1, 2000, Center for Hellenic Studies is included in Arts and Sciences. As of July 1, 2001, Dumbarton Oaks is included in Arts and Sciences.

(4) Government includes Institute of Politics.

(5) As of June 30, 2000, only a portion of Radcliffe's endowment participated in the General Investment Accounts.

(6) Other Academic Departments include: Arnold Arboretum, Center for Hellenic Studies (FY99 and FY00), Dumbarton Oaks (FY99, FY00 and FY01), Harvard Institute for International Development, Harvard University Art Museums, Nieman Foundation and Villa I Tatti.

(7) In addition to Central Administration, includes the President's Funds, University Professorships, University Press, University Health Services and Memorial Church.

SOURCE: ANNUAL UNIVERSITY FINANCIAL REPORT

Historical Endowment Performance: FY1983 - FY2003

Fiscal Year	Unit Value at Beginning of the Year ⁽¹⁾	Dollar Value and Percentage Beginning Value Per Unit						Actual Distribution Per Unit ⁽³⁾	Spending Rate ⁽⁴⁾
		Income		Capital Gain		Total Return ⁽²⁾			
1983	\$128.04	\$10.83	8.5%	\$43.01	33.6%	\$53.84	42.0%	\$7.40	5.78%
1984	171.05	10.71	6.3%	(16.92)	(9.9%)	(6.21)	(3.6%)	7.40	4.33%
1985	154.13	11.52	7.5%	28.34	18.4%	39.86	25.9%	7.58	4.92%
1986	182.47	12.53	6.9%	42.28	23.2%	54.81	30.0%	7.86	4.31%
1987	224.75	11.16	5.0%	32.03	14.3%	43.19	19.2%	8.09	3.60%
1988	256.78	10.41	4.1%	3.57	1.4%	13.98	5.4%	8.49	3.31%
1989	260.35	13.94	5.4%	18.27	7.0%	32.21	12.4%	10.16	3.90%
1990	278.62	14.57	5.2%	6.04	2.2%	20.61	7.4%	10.65	3.82%
1991	284.66	12.75	4.5%	(9.72)	(3.4%)	3.03	1.1%	11.96	4.20%
1992	274.94	11.87	4.3%	20.26	7.4%	32.13	11.7%	12.44	4.52%
1993	295.20	11.70	4.0%	36.68	12.4%	48.38	16.4%	14.08	4.77%
1994	331.88	13.19	4.0%	19.05	5.7%	32.24	9.7%	15.01	4.52%
1995	350.93	11.90	3.4%	45.87	13.1%	57.77	16.5%	16.07	4.58%
1996	396.80	15.23	3.8%	86.03	21.7%	101.26	25.5%	17.20	4.33%
1997	482.83	14.60	3.0%	106.53	22.1%	121.13	25.1%	19.84	⁽⁵⁾ 4.11%
1998	589.36	10.64	1.8%	108.45	18.4%	119.09	20.2%	21.90	3.72%
1999	697.81	21.57	3.1%	60.94	8.7%	82.51	11.8%	23.14	3.32%
2000	758.75	14.42	1.9%	227.20	29.9%	241.62	31.8%	30.15	3.97%
2001	985.95	19.10	1.9%	(45.75)	(4.6%)	(26.65)	(2.7%)	32.92	3.34%
2002	940.20	20.63	2.2%	(25.42)	(2.7%)	(4.79)	(0.5%)	45.32	4.82%
2003	\$914.78	*	*	*	*	*	*	\$47.11	5.15%

Average Annual Growth Rates

20 YEAR	10.3%	-	-	-	-	-	-	9.7%	-
10 YEAR	12.0%	-	-	-	-	-	-	12.8%	-
5 YEAR	9.2%	-	-	-	-	-	-	16.6%	-
1 YEAR	(2.7%)	-	-	-	-	-	-	3.9%	-

(1) Harvard's endowment comprises over 10,300 separate funds. Each fund has been unitized and the separate funds hold "units of the endowment" as their value. Column one shows the value of units as of July 1.

(2) The total return percentage reported by the Harvard Management Company is slightly higher than the one listed above as it is calculated based on reinvestment of all earnings on a monthly basis.

(3) As of July 1, from income earned the previous fiscal year.

(4) Distribution per unit (actual or effective) divided by beginning of year unit value (actual or effective).

(5) Net of the \$1.28 per unit fringe supplement, the FY97 payout is \$18.56, and the spending rate is 3.84%.

* Value not available at time of publication.

SOURCE: INTERNAL ENDOWMENT REPORTS

On the Cover
Harvard Yard Gate

Harvard College is the oldest institution of higher learning in the United States. It was established in 1636 by vote of the Great and General Court of the Massachusetts Bay Colony and was named for its first benefactor, John Harvard of Charlestown, Massachusetts. Upon his death in 1638, the young minister left his library and half his estate to the new College. Founded 16 years after the arrival of the Pilgrims at Plymouth, the College has grown from nine students with a single master to an enrollment of more than 19,000 degree candidates, including undergraduates and students in 10 graduate and professional schools.

Photo by Kris Snibbe

