

HARVARD UNIVERSITY
FACT BOOK
2008-2009

ORGANIZATION	Pages
Central Administration	2
Faculties and Allied Institutions	3
Research and Academic Centers	4 - 5
PEOPLE	
Degree Student Enrollment	6 - 9
Degrees Conferred	10 - 13
International Students	14 - 15
Non-Degree Students and Fellowship Programs	16 - 17
Faculty Counts	18 - 19
Staff Counts	20 - 21
RESOURCES	
Tuition, Fees, and Financial Aid	23 - 26
Sponsored Research	27 - 31
Library	32 - 33
FY2003 Income and Expense	35 - 37
Physical Plant	38 - 39
Endowment	40 - 41

The Harvard University Fact Book is published by:
Office of Budgets, Financial Planning and Institutional Research
Holyoke Center 780, Cambridge, MA 02138

The address for the electronic version is:

<http://vpf-web.harvard.edu/factbook/>

If you would like more information about data contained in the Fact Book, contact:

RUTH LOESCHER, Institutional Research Coordinator

(617) 496-3568, E-mail: ruth_loescher@harvard.edu

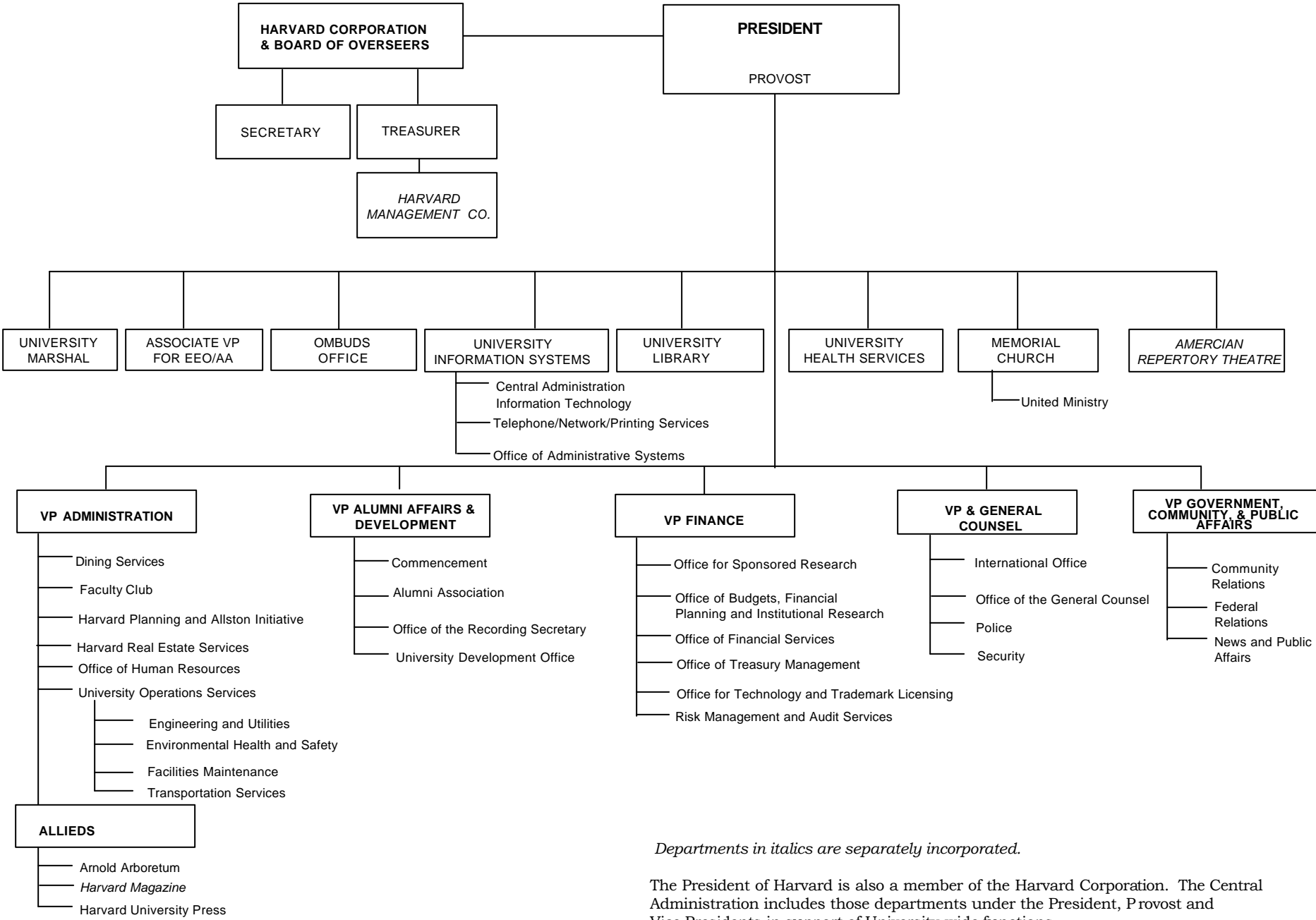
NINA ZIPSER, Director of Institutional Research

(617) 384-9236, E-mail: nina_zipser@harvard.edu

Publication date: August 2004

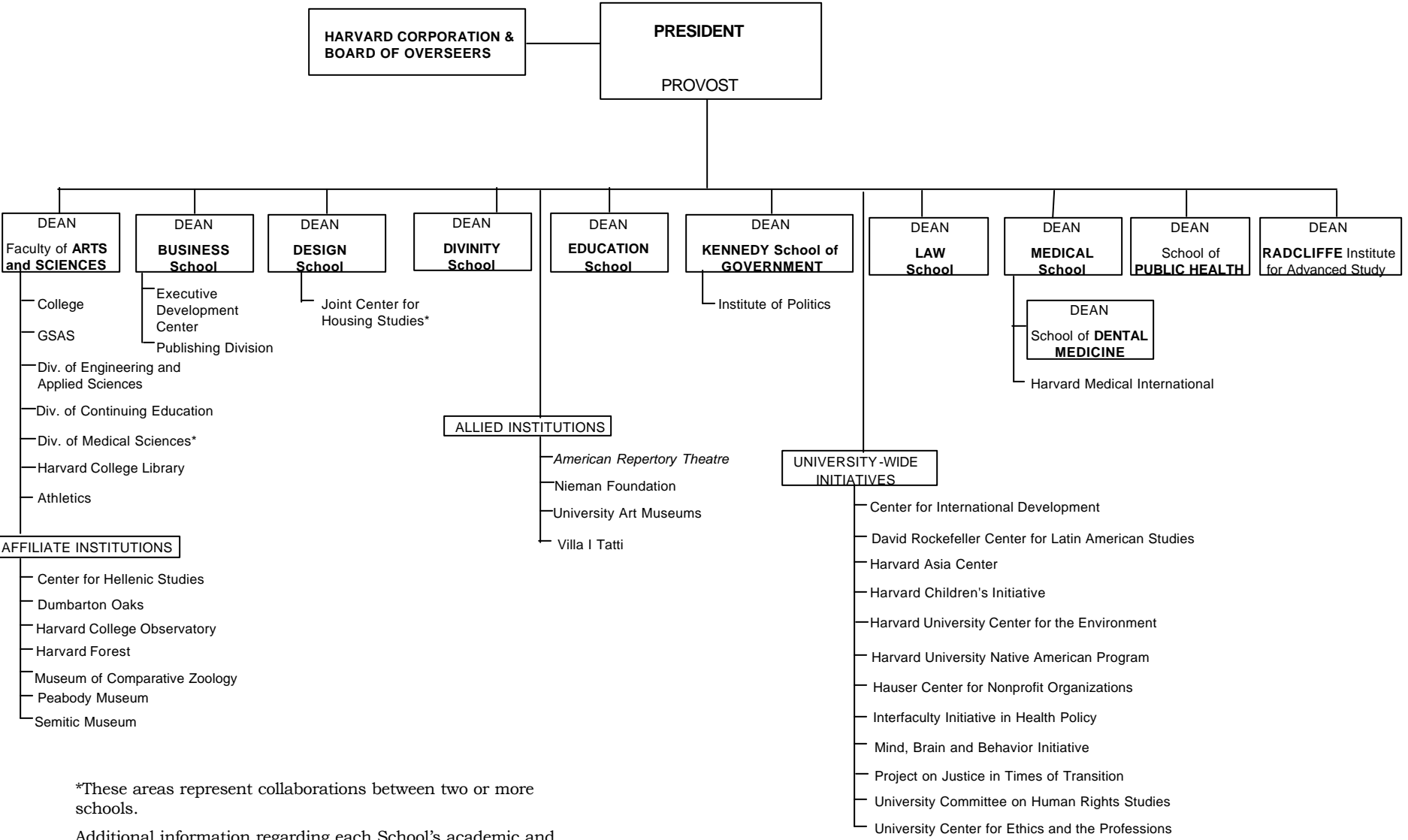
Changes to content after publication are reflected on the web version of the Fact Book.

Copyright 2004 by the President and Fellows of Harvard College



Departments in italics are separately incorporated.

The President of Harvard is also a member of the Harvard Corporation. The Central Administration includes those departments under the President, Provost and Vice Presidents in support of University-wide functions.



*These areas represent collaborations between two or more schools.

Additional information regarding each School's academic and research programs can be found at the following website:
www.harvard.edu/academics/

A list of research and academic centers affiliated with the Schools can be found on pages 4-5 of the Fact Book.
Departments in italics are separately incorporated.

Harvard University Research and Academic Centers ⁽¹⁾

FACULTY of ARTS and SCIENCES

Aga Khan Program for Islamic Architecture ⁽²⁾
 Bauer Center for Genomics Research
 Derek Bok Center for Teaching and Learning
 Center for American Political Studies
 Center for Basic Research in the Social Sciences
 Center for Hellenic Studies
 Center for Imaging and Mesoscale Structures
 Center for Jewish Studies
 Center for Middle Eastern Studies
 Center for Systems Neuroscience
 Davis Center for Russian Studies
 W.E.B. Dubois Institute for Afro-American Research
 Dumbarton Oaks
 Fairbank Center for East Asian Research
 Minda de Gunzburg Center for European Studies
 Harvard Academy for International and Area Studies
 Harvard Asia Center**
 Harvard MIT Data Center
 Harvard University Center for the Environment **
 Harvard-Yenching Institute
 Humanities Center
 Korea Institute
 Materials Research Science and Engineering Center
 Olin Institute for Strategic Studies
 Program on Evolutionary Dynamics
 Reischauer Institute of Japanese Studies
 David Rockefeller Center for Latin American Studies**
 Rowland Institute
 Technology and Entrepreneurship at Harvard
 Ukrainian Research Institute
 Charles Warren Center for Studies in American History
 Weatherhead Center for International Affairs

BUSINESS

Regional Research Centers
 Asia-Pacific Research Center
 California Research Center
 European Research Center
 Japan Research Center
 Latin America Research Center
 Research Centers
 Institute for Strategy and Competitiveness *
 Initiative on Social Enterprise
 Leadership Initiative
 Arthur M. Rock Center for Entrepreneurship

DESIGN

Center for Design Informatics
 Center for Technology and Environment
 Center for Urban Development Studies
 Joint Center for Housing Studies*
 Real Estate Academic Initiative

DIVINITY

Center for the Study of World Religions

EDUCATION

Civil Rights Project
 Change Leadership Group
 Harvard Family Research Project
 National Center for the Study of Adult Learning and Literacy
 Project Zero
 WIDE World Initiative

GOVERNMENT

The Roy and Lila Ash Institute for Democratic Governance and Innovation
 Robert and Renee Belfer Center for Science and International Affairs
 Carr Center on Human Rights Policy
 Center for Business and Government
 Center for International Development at Harvard University *
 Center for Public Leadership
 Hauser Center for Nonprofit Organizations *
 Joan Shorenstein Center on the Press, Politics and Public Policy
 A. Alfred Taubman Center for State and Local Government ⁽³⁾
 University Center for Ethics and the Professions*
 Malcolm Wiener Center for Social Policy
 Women and Public Policy Program

UNIVERSITY-WIDE INITIATIVES*

Center for International Development at Harvard University
 David Rockefeller Center for Latin American Studies
 Harvard Asia Center
 Harvard Children's Initiative
 Harvard University Center for the Environment
 Harvard University Native American Program
 Hauser Center for Nonprofit Organizations
 Interfaculty Initiative in Health Policy
 Mind, Brain and Behavior Initiative
 Project on Justice in Times of Transition
 University Center for Ethics and the Professions
 University Committee on Human Rights Studies

(1) The Research and Academic Centers listed are those affiliated with the Schools.

(2) The Aga Khan Program for Islamic Architecture is a joint program with Massachusetts Institute of Technology.

(3) The A. Alfred Taubman Center for State and Local Government includes the Institute on Government Innovation and the Rappaport Institute for Greater Boston.

*These areas represent collaborations between two or more schools.

** Programs are located in the Faculty of Arts and Sciences, but are considered University-Wide initiatives.

SOURCE: SCHOOLS

Harvard University Research and Academic Centers ⁽¹⁾

MEDICINE

Center for Craniofacial Tissue Engineering
 Center for Eating Disorders
 Center for Genetics and Genomics, Harvard Medical School-Partners Healthcare
 Center for Health and the Global Environment
 Center for Hereditary Deafness
 Center for Integration of Medicine and Innovative Technology
 Center for Immunological Tolerance
 Center for Magnetic Resonance
 Center for Mental Health and Media
 Center for Neurodegeneration and Repair
 Center for Neurofibromatosis and Allied Disorders
 Center for Palliative Care
 Center for Skin Disease Research
 Center of Excellence in Women's Health
 Dana Farber/Harvard Cancer Center
 Division for Research and Education in Complementary and Integrative Medical Therapies
 Division of Addictions
 Division of Aging
 Division of AIDS
 Division of Emergency Medicine
 Division of Health Care Policy Research and Education
 Division of Health Sciences and Technology
 Division of Medical Ethics
 Division of Nutrition
 Division of Primary Care
 Division of Service Learning
 Division of Sleep Medicine
 Harvard Clinical Research Institute
 Institute for Chemistry and Cell Biology
 Institute of Neuroscience, Harvard-Mahoney
 Institute of Proteomics
 New England Regional Primate Center
 Program on Head and Neck Oncology

LAW

Ames Foundation and Selden Society
 Berkman Center for Internet & Society
 The Civil Rights Project at Harvard
 East Asian Legal Studies Program
 European Law Research Center
 Fund for Tax and Fiscal Policy Research
 Harvard Law School History Project
 Human Rights Program
 International Tax Program
 Islamic Legal Studies Program
 John M. Olin Center for Law, Economics and Business
 Labor and Worklife Program
 Program on Corporate Governance
 Program on Empirical Legal Studies
 Program of Instruction for Lawyers
 Program on International Financial Systems
 Program on Negotiation
 Program on the Legal Profession
 Project on Justice in Times of Transition

PUBLIC HEALTH

Center for Health Communications
 Francois-Xavier Bagnoud Center for Health and Human Rights
 Harvard AIDS Institute
 Harvard Center for Cancer Prevention
 Harvard Center for Population and Development Studies
 Harvard Center for Risk Analysis
 Harvard Center for Society and Health

RADCLIFFE INSTITUTE FOR ADVANCED STUDY

Radcliffe Institute Fellowship Program
 Henry A. Murray Research Center
 Arthur and Elizabeth Schlesinger Library on the History of Women in America

(1) The Research and Academic Centers listed are those affiliated with the Schools.

*These areas represent collaborations between two or more schools.

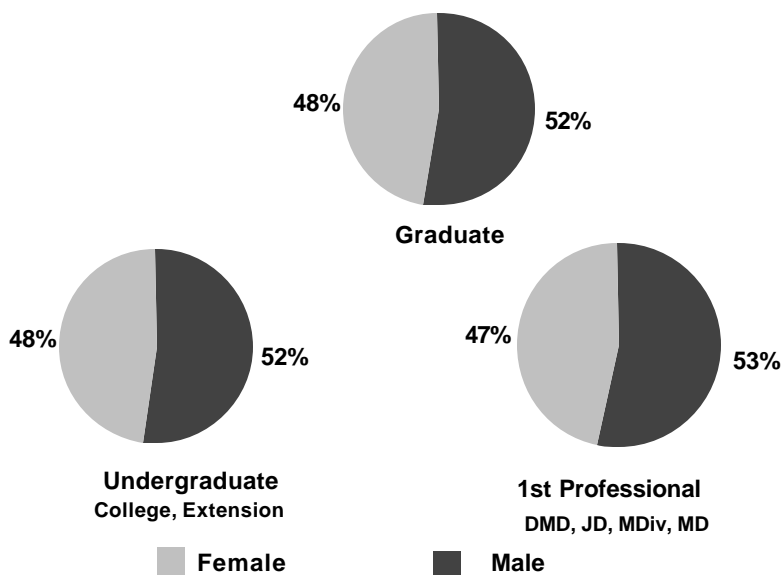
** Programs are located in the Faculty of Arts and Sciences, but are considered University-Wide initiatives.

SOURCE: SCHOOLS

Degree Student Head Count: Fall 2003

Counts taken as of October 15, 2003

	Male	Female	Total	Full-Time	Part-Time	Total
College ⁽¹⁾						
Freshmen	855	792	1,647	1,647	-	1,647
Sophomores	845	803	1,648	1,648	-	1,648
Juniors ⁽²⁾	756	655	1,411	1,411	-	1,411
Seniors	1,016	875	1,891	1,885	6	1,891
Subtotal	3,472	3,125	6,597	6,591	6	6,597
GSAS ⁽³⁾	1,970	1,540	3,510	3,496	14	3,510
Business	1,184	648	1,832	1,832	-	1,832
Dental ⁽⁴⁾	113	89	202	202	-	202
Design	307	288	595	595	-	595
Divinity	219	236	455	411	44	455
Education	277	803	1,080	886	194	1,080
Government	524	400	924	891	33	924
Law	1,074	825	1,899	1,897	2	1,899
Medical	384	396	780	780	-	780
Public Health	286	451	737	532	205	737
Extension						
Undergraduate	180	223	403	176	227	403
Graduate	324	352	676	140	536	676
Subtotal, All Degree Students	10,314	9,376	19,690	18,429	1,261	19,690
Adj. for Joint Degree Students	(31)	(21)	(52)	(52)	-	(52)
TOTAL	10,283	9,355	19,638	18,377	1,261	19,638



(1) Students in the Advanced Standing Program are counted as Juniors in their second year and Seniors in their third and fourth year.

(2) Counts for Juniors include 18 undergraduates unclassified by year.

(3) Candidates for the Ph.D. are enrolled in GSAS but may cross register for courses in other faculties.

(4) Clinical specialty students in the Dental School are not included in totals. See page 16 for Dental Clinical Specialty counts.

SOURCE: REGISTRAR OFFICES

Historical Enrollments: Fall 1998 - 2003

Degree Student Head Count by School

	1998	1999	2000	2001	2002	2003
College	6,704	6,684	6,660	6,650	6,649	6,597
GSAS ⁽¹⁾	2,926	2,979	3,144	3,358	3,357	3,510
Business ⁽²⁾	1,517	1,485	1,458	1,847	1,836	1,832
Dental ⁽³⁾	210	209	214	213	207	202
Design	532	538	550	536	556	595
Divinity	513	481	480	451	443	455
Education	1,171	1,096	1,087	1,121	1,057	1,080
Government	728	770	840	881	896	924
Law	1,861	1,860	1,838	1,914	1,915	1,899
Medical	757	744	756	777	787	780
Public Health	756	760	823	808	825	737
Extension						
Undergraduate	423	403	437	435	401	403
Graduate	541	589	631	626	671	676
Subtotal, All Degree Students	18,639	18,598	18,918	19,617	19,600	19,690
Adj. for Joint Degree Students	(70)	(57)	(71)	(78)	(64)	(52)
TOTAL	18,569	18,541	18,847	19,539	19,536	19,638

Enrollment Level ⁽⁴⁾	1998	1999	2000	2001	2002	2003
Undergraduates						
Full-Time	6,855	6,816	6,816	6,831	6,822	6,767
Part-Time	272	271	281	254	228	233
Subtotal	7,127	7,087	7,097	7,085	7,050	7,000
Graduate Students						
Full-Time	7,844	7,842	8,116	8,865	8,818	8,993
Part-Time	980	991	1,004	952	992	1,004
Subtotal	8,824	8,833	9,120	9,817	9,810	9,997
1st Professional Degree ⁽⁵⁾						
Full-Time	2,661	2,657	2,677	2,690	2,722	2,668
Part-Time	27	21	24	25	18	25
Subtotal	2,688	2,678	2,701	2,715	2,740	2,693
TOTAL	18,639	18,598	18,918	19,617	19,600	19,690

(1) Candidates for the Ph.D. are enrolled in GSAS but may cross register for courses in other faculties.

(2) Between January 1997 and January 2001, the Business School instituted a second matriculation date for its MBA Program. These students are not reflected in the counts above. Enrollments were 312 in January 1999, 301 in January 2000 and 341 in January 2001.

(3) These figures exclude postdoctoral students enrolled in a clinical specialty. See page 16 for Dental Clinical Specialty counts.

(4) Includes degree candidates from the Extension School. Not adjusted for joint degree students.

(5) 1st-Professional degrees include DMD, JD, MDiv, and MD.

SOURCE: REGISTRAR OFFICES

Student Enrollment by Degree: Fall 2003 ⁽¹⁾

		Male		Female		Total
		Full-Time	Part-Time	Full-Time	Part-Time	
College	A.B., S.B.	3,471	1	3,120	5	6,597
GSAS	A.M., S.M., Ph.D.	1,960	10	1,536	4	3,510
Business	M.B.A.	1,168	-	634	-	1,802
	D.B.A.	16	-	14	-	30
Dental	D.M.D.	72	-	67	-	139
	M.M.Sc.	25	-	12	-	37
	D.M.Sc.	16	-	10	-	26
Design	M.Arch.	160	-	140	-	300
	M.A.U.D./M.L.A.U.D.	30	-	14	-	44
	M.Des	43	-	26	-	69
	M.L.A.	33	-	65	-	98
	M.U.P.	19	-	28	-	47
	Dr.Des	22	-	15	-	37
Divinity	M.Div.	69	7	67	18	161
	M.T.S.	96	7	116	9	228
	Th.M.	5	3	-	-	8
	Th.D.	32	-	26	-	58
Education	Ed.M.	138	28	396	97	659
	Ed.D.	87	24	264	44	419
	C.A.S.	-	-	1	1	2
Government	M.P.A.	232	12	137	9	390
	M.P.A./I.D.	71	-	57	-	128
	M.P.P.	181	5	175	6	367
	M.U.P.	11	-	7	1	19
	Ph.D.	12	-	8	-	20
Law	J.D.	938	-	729	-	1,667
	LL.M.	95	2	66	-	163
	S.J.D.	39	-	30	-	69
Medical	M.D.	353	-	373	-	726
	M.M.Sc.	31	-	23	-	54
Public Health	M.P.H.	68	48	72	40	228
	M.S.	32	56	135	30	253
	D.P.H.	9	-	5	2	16
	D.S.	60	13	151	16	240
Extension	A.A., A.L.B.	87	93	89	134	403
	A.L.M., Grad. Cert.	56	268	84	268	676
TOTAL		9,737	577	8,692	684	19,690

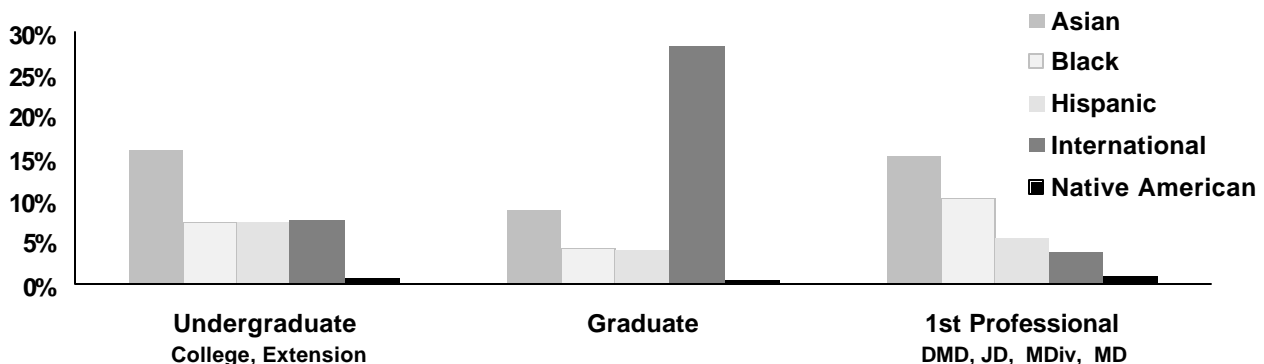
(1) Not adjusted for joint degree students.

SOURCE: REGISTRAR OFFICES

Degree Student Enrollment by Ethnicity: Fall 2003 ⁽¹⁾

	College	GSAS	Business	Dental	Design	Divinity	Education	Government	Law	Medical	Public Health	Extension	Total
Asian/Pacific Islander													
Male	491	114	96	22	30	13	18	25	93	106	32	43	1,083
Female	594	154	109	33	52	10	77	30	100	85	40	38	1,322
Subtotal	1,085	268	205	55	82	23	95	55	193	191	72	81	2,405
Percent	16%	8%	11%	27%	14%	5%	9%	6%	10%	24%	10%	8%	12.2%
Black/Non-Hispanic													
Male	228	43	64	7	9	14	22	14	54	40	7	20	522
Female	268	75	42	2	10	14	57	34	109	60	24	21	716
Subtotal	496	118	106	9	19	28	79	48	163	100	31	41	1,238
Percent	8%	3%	6%	4%	3%	6%	7%	5%	9%	13%	4%	13%	6.3%
Hispanic													
Male	255	63	45	4	10	9	22	29	47	36	10	30	560
Female	232	65	20	4	14	7	45	37	31	28	20	21	524
Subtotal	487	128	65	8	24	16	67	66	78	64	30	51	1,084
Percent	7%	4%	4%	4%	4%	4%	6%	7%	4%	8%	4%	5%	5.5%
International Students													
Male	293	582	412	19	100	20	34	233	163	15	98	70	2,039
Female	232	367	202	14	89	15	71	133	113	21	100	72	1,429
Subtotal	525	949	614	33	189	35	105	366	276	36	198	142	3,468
Percent	8%	27%	34%	16%	32%	8%	10%	40%	15%	5%	27%	13%	17.6%
Native American													
Male	26	5	7	-	1	1	1	5	4	7	1	2	60
Female	27	5	1	-	2	2	5	-	3	7	3	1	56
Subtotal	53	10	8	-	3	3	6	5	7	14	4	3	116
Percent	1%	0%	0%	0%	1%	1%	1%	1%	0%	2%	1%	0%	0.6%
White/Non-Hispanic													
Male	1,736	736	432	54	128	145	121	176	559	167	106	299	4,659
Female	1,411	541	239	32	103	167	401	134	386	189	202	386	4,191
Subtotal	3,147	1,277	671	86	231	312	522	310	945	356	308	685	8,850
Percent	48%	36%	37%	43%	39%	69%	48%	34%	50%	46%	42%	63%	44.9%
Unknown/Other													
Male	443	427	128	7	29	17	59	42	154	13	32	40	1,391
Female	361	333	35	4	18	21	147	32	83	6	62	36	1,138
Subtotal	804	760	163	11	47	38	206	74	237	19	94	76	2,529
Percent	12%	22%	9%	5%	8%	8%	19%	8%	12%	2%	13%	7%	12.8%
TOTAL	6,597	3,510	1,832	202	595	455	1,080	924	1,899	780	737	1,079	19,690

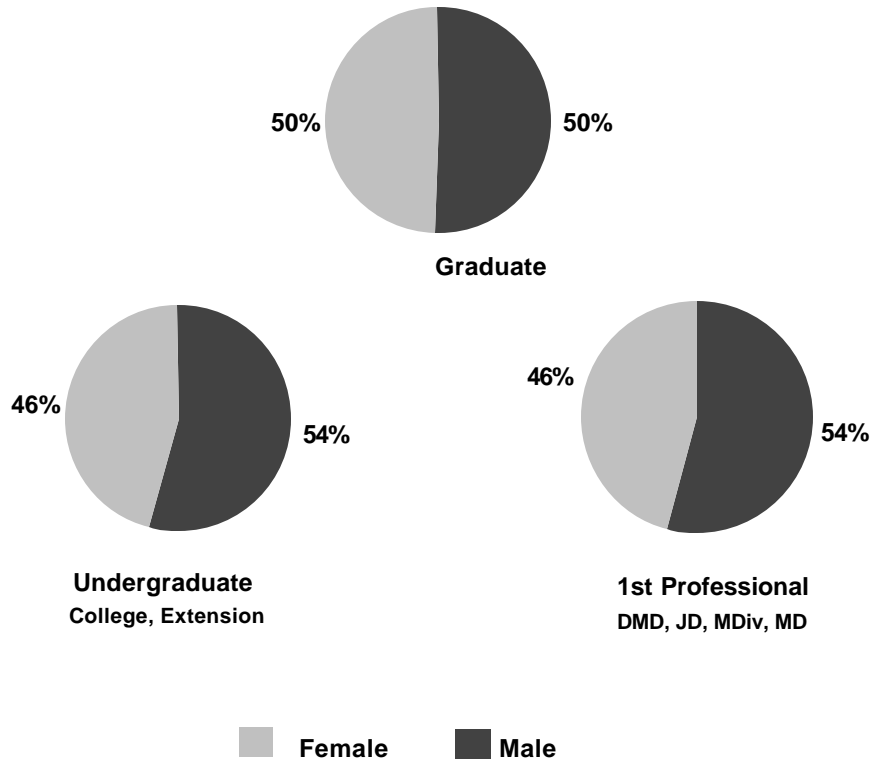
Percentage of Minority and International Students by Enrollment Level



(1) Not adjusted for joint degree students.
SOURCE: REGISTRAR OFFICES

Degrees Conferred by School ⁽¹⁾ Academic Year 2002-2003

	Male	Female	Total
College	925	766	1,691
GSAS	471	343	814
Business	563	327	890
Dental	28	26	54
Design	118	99	217
Divinity	57	86	143
Education	159	493	652
Government	314	228	542
Law	389	330	719
Medical	113	76	189
Public Health	183	245	428
Extension			
Undergraduate	56	77	133
Graduate	136	191	327
TOTAL	3,512	3,287	6,799



(1) Not adjusted for joint degree students.
SOURCE: REGISTRAR OFFICES

Degrees Conferred by Degree: Academic Year 2002-2003 ⁽¹⁾

		Male	Female	Total
College	A.B.	920	766	1,686
	S.B.	5	-	5
GSAS	A.M.	194	169	363
	M.E.	1	-	1
	S.M.	50	8	58
	Ph.D.	226	166	392
Business	M.B.A.	562	325	887
	D.B.A.	1	2	3
Dental	D.M.D.	18	18	36
	M.M.Sc.	7	8	15
	D.M.Sc.	3	-	3
Design	M.Arch.	57	34	91
	M.A.U.D./M.L.A.U.D.	18	7	25
	M.Des.	31	20	51
	M.L.A.	8	19	27
	M.U.P.	1	14	15
	Dr.Des.	3	5	8
Divinity	M.Div.	18	32	50
	M.T.S.	34	49	83
	Th.M.	5	2	7
	Th.D.	-	3	3
Education	Ed.M.	141	448	589
	Ed.D.	16	43	59
	C.A.S.	2	2	4
Government	M.P.A. (1 YEAR)	129	80	209
	M.P.A. (2 YEAR)	58	28	86
	M.P.A./I.D.	43	34	77
	M.P.P.	78	85	163
	M.U.P.	6	1	7
Law	J.D.	312	263	575
	LL.M.	68	62	130
	S.J.D.	9	5	14
Medical	M.D.	97	68	165
	M.M.Sc.	16	8	24
Public Health	M.P.H.	119	92	211
	M.S.	50	102	152
	D.P.H.	2	3	5
	D.S.	12	48	60
Extension	A.A.	7	13	20
	A.L.B.	49	64	113
	A.L.M.	37	45	82
	Grad. Cert.	99	146	245
TOTAL		3,512	3,287	6,799

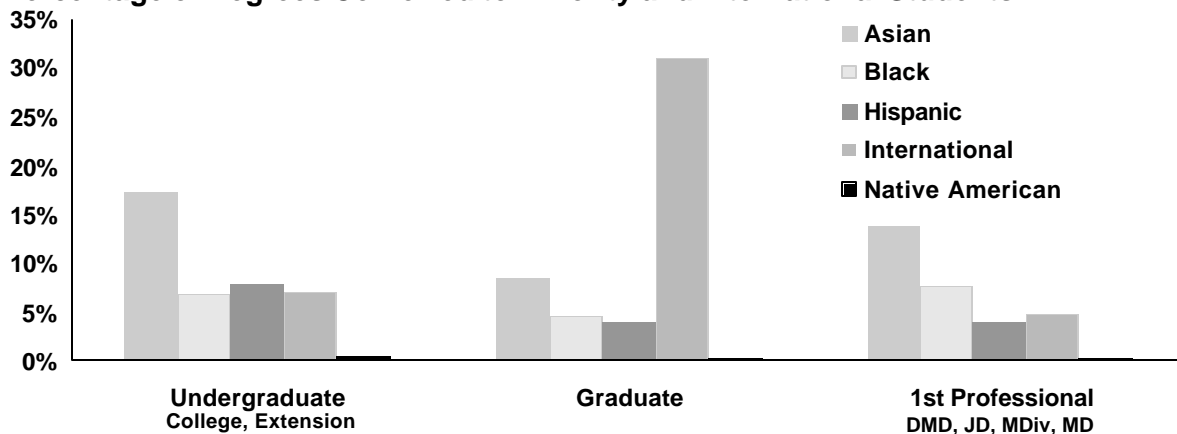
(1) Not adjusted for joint degree students.

SOURCE: REGISTRAR OFFICES

Degrees Conferred by Student Ethnicity: Academic Year 2002-2003 ⁽¹⁾

	College	GSAS	Business	Dental	Design	Divinity	Education	Government	Law	Medical	Public Health	Extension	Total
Asian/Pacific Islander													
Male	147	47	41	9	11	4	12	17	26	29	8	13	364
Female	160	37	32	9	16	5	52	19	27	20	33	13	423
Subtotal	307	84	73	18	27	9	64	36	53	49	41	26	787
Percent	18%	10%	8%	33%	12%	6%	10%	7%	7%	26%	10%	6%	11.6%
Black/Non-Hispanic													
Male	58	10	29	-	3	7	10	14	16	11	6	3	167
Female	66	13	23	-	2	5	28	16	25	8	17	9	212
Subtotal	124	23	52	-	5	12	38	30	41	19	23	12	379
Percent	7%	3%	6%	0%	2%	8%	6%	6%	6%	10%	5%	3%	5.6%
Hispanic													
Male	63	8	12	-	8	3	17	13	10	9	4	7	154
Female	74	12	8	2	8	5	41	15	6	3	4	9	187
Subtotal	137	20	20	2	16	8	58	28	16	12	8	16	341
Percent	8%	2%	2%	4%	7%	6%	9%	5%	2%	6%	2%	3%	5.0%
International Students													
Male	75	135	201	7	49	10	18	135	79	9	71	55	844
Female	48	82	90	5	37	7	38	65	75	1	70	81	599
Subtotal	123	217	291	12	86	17	56	200	154	10	141	136	1,443
Percent	7%	27%	33%	22%	40%	12%	9%	37%	21%	5%	33%	30%	21.2%
Native American													
Male	6	-	3	-	-	1	-	3	-	1	-	1	15
Female	3	-	1	-	-	1	2	2	-	-	1	4	14
Subtotal	9	-	4	-	-	2	2	5	-	1	1	5	29
Percent	1%	0%	0%	0%	0%	1%	0%	1%	0%	1%	0%	1%	0.4%
White/Non-Hispanic													
Male	443	154	198	10	41	31	80	99	156	45	69	101	1,427
Female	319	116	138	10	30	55	267	90	107	44	88	144	1,408
Subtotal	762	270	336	20	71	86	347	189	263	89	157	245	2,835
Percent	45%	33%	38%	37%	33%	60%	53%	35%	37%	47%	37%	53%	41.7%
Unknown/Other													
Male	133	117	79	2	6	1	22	33	102	9	25	12	541
Female	96	83	35	-	6	8	65	21	90	-	32	8	444
Subtotal	229	200	114	2	12	9	87	54	192	9	57	20	985
Percent	14%	25%	13%	4%	6%	6%	13%	10%	27%	5%	13%	4%	14.5%
TOTAL	1,691	814	890	54	217	143	652	542	719	189	428	460	6,799

Percentage of Degrees Conferred to Minority and International Students



(1) Not adjusted for joint degree students.
SOURCE: REGISTRAR OFFICES

Degrees Conferred: Academic Year 1998-2003 ⁽¹⁾

	Academic Year	1998	1999	2000	2001	2002	2003
College	A.B.	1,651	1,649	1,675	1,694	1,656	1,686
	S.B.	12	10	14	8	9	5
	Subtotal	1,663	1,659	1,689	1,702	1,665	1,691
GSAS	A.M.	287	289	286	317	325	363
	M.E.	-	-	-	1	-	1
	M.F.S.	-	-	-	1	3	-
	S.M.	42	32	37	44	65	58
	Ph.D.	428	438	412	387	383	392
	Subtotal	757	759	735	750	776	814
Business	M.B.A.	859	897	876	848	916	887
	D.B.A.	4	12	4	5	4	3
	Subtotal	863	909	880	853	920	890
Dental	D.M.D.	53	31	28	32	32	36
	M.M.S.	14	10	12	15	14	15
	M.P.H.	1	-	-	2	-	-
	D.M.S.	9	12	5	8	10	3
	Subtotal	77	53	45	57	56	54
Design	M. Arch.	91	92	89	96	98	91
	M.A.U.D./M.L.A.U.D.	24	26	22	25	24	25
	M.Des.	38	34	39	45	51	51
	M.L.A.	36	44	28	34	24	27
	M.U.P.	12	13	14	18	14	15
	Dr.Des.	-	3	7	9	11	8
Subtotal	201	212	199	227	222	217	
Divinity	M.Div.	52	54	53	63	38	50
	M.T.S.	99	116	103	95	102	83
	Th.M.	12	7	7	7	4	7
	Th.D.	12	3	4	6	8	3
Subtotal	175	180	167	171	152	143	
Education	Ed.M.	580	609	540	603	603	589
	Ed.D.	47	62	58	47	78	59
	C.A.S.	15	13	12	6	3	4
	Subtotal	642	684	610	656	684	652
Government	M.P.A. (1 Year)	236	194	202	191	202	209
	M.P.A. (2 Year)	54	59	94	72	84	86
	M.P.A./I.D.	-	-	-	49	56	77
	M.P.P.	233	207	143	150	158	163
	M.C.R.P./M.U.P.	10	3	6	4	5	7
	D.P.A.	-	-	-	1	-	-
Subtotal	533	463	445	467	505	542	
Law	J.D.	538	563	557	543	554	575
	LL.M.	135	158	134	130	144	130
	S.J.D.	8	6	13	10	7	14
	Subtotal	681	727	704	683	705	719
Medicine	M.D.	165	178	162	162	157	165
	MMSc.	11	20	19	11	13	24
	Subtotal	176	198	181	173	170	189
Public Health	M.P.H.	173	165	167	205	214	211
	M.S., M.O.H.	122	146	133	147	134	152
	D.P.H., D.S.	59	66	52	39	42	65
	Subtotal	354	377	352	391	390	428
Extension	A.A.	15	19	12	10	16	20
	A.L.B.	115	117	135	126	134	113
	A.L.M.	72	91	77	88	84	82
	Grad. Cert.	261	294	301	341	312	245
	Subtotal	463	521	525	565	546	460
TOTAL	6,585	6,742	6,532	6,695	6,791	6,799	

(1) Not adjusted for joint degree students.

SOURCE: REGISTRAR OFFICES

International Enrollment: Fall 2003 ⁽¹⁾

	Africa	Asia	Europe	Latin America	Middle East	North America	Oceania	Total
College	31	101	158	15	17	139	14	475
GSAS	16	449	338	55	79	138	30	1,105
Business	27	152	214	70	27	75	15	580
Dental	-	12	6	4	7	6	-	35
Design	2	99	37	10	8	20	2	178
Divinity	2	14	11	1	1	8	1	38
Education	6	41	11	14	4	16	-	92
Government	15	119	101	48	22	32	11	348
Law	24	85	92	19	25	45	12	302
Medical	5	7	4	3	2	10	-	31
Public Health	24	75	29	9	5	19	5	166
Extension	2	12	11	12	7	7	1	52
TOTAL	154	1,166	1,012	260	204	515	91	3,402

(1) Counts include full-time degree and non-degree students only, which include transfer and special students, visiting undergraduates, and Extension School enrollees. Counts exclude executive education and professional development programs.

SOURCE: INTERNATIONAL OFFICE

Historical Enrollment of International Students: Fall 1998 - 2003⁽¹⁾

	Fall					
	1998	1999	2000	2001	2002	2003
Africa						
Ghana	5	8	13	16	15	19
Kenya	10	12	16	17	14	22
Nigeria	12	18	21	34	22	24
South Africa	22	23	28	26	30	23
Zimbabwe	8	9	8	12	18	18
Other	50	32	45	59	49	48
Subtotal	107	102	131	164	148	154
Asia						
China	176	227	270	318	337	354
India	89	96	104	120	112	133
Japan	148	151	158	163	134	127
South Korea	180	183	213	212	207	191
Taiwan	108	97	102	81	86	82
Other	243	274	270	286	285	279
Subtotal	944	1,028	1,117	1,180	1,161	1,166
Europe						
France	60	71	74	67	83	78
Germany	103	123	120	119	124	132
Italy	42	40	48	49	51	54
Spain	56	60	62	67	55	53
United Kingdom	109	133	158	157	174	180
Other	450	468	482	487	492	515
Subtotal	820	895	944	946	979	1,012
Latin America						
Argentina	54	62	57	61	60	55
Brazil	50	67	61	65	68	63
Chile	18	25	33	24	26	26
Colombia	28	47	48	40	50	31
Peru	14	17	24	27	18	20
Other	80	106	97	92	86	65
Subtotal	244	324	320	309	308	260
Middle East						
Cyprus	8	14	12	7	6	11
Israel	51	63	72	71	75	71
Lebanon	8	8	9	16	8	12
Turkey	56	66	75	64	79	71
Other	27	25	32	38	31	39
Subtotal	150	176	200	196	199	204
North America						
Canada	401	419	434	464	492	444
Mexico	86	83	101	95	85	71
Subtotal	487	502	535	559	577	515
Oceania						
Australia	50	53	61	73	66	70
New Zealand	16	19	22	21	19	21
Subtotal	66	72	83	94	85	91
Stateless	-	-	-	-	2	-
TOTAL	2,818	3,099	3,330	3,448	3,459	3,402

Africa Other: Benin, Botswana, Burkina Faso, Cameroon, Cote D'Ivoire, Egypt, Ethiopia, Gabon, Gambia, Ghana, Mauritius, Morocco, Mozambique, Rwanda, Senegal, Sierra Leone, Sudan, Tanzania, Tunisia, Uganda, Zambia.

Asia Other: Bangladesh, Bhutan, Burma (Myanmar), Hong Kong, Indonesia, Kazakhstan, Kyrgyzstan, Malaysia, Mongolia, Nepal, Pakistan, Philippines, Singapore, Sri Lanka, Taiwan, Thailand, Turkmenistan, Uzbekistan, Vietnam.

Europe Other: Albania, Armenia, Austria, Azerbaijan, Belarus, Belgium, Bosnia and Herzegovina, Bulgaria, Croatia, Czech Republic, Denmark, Estonia, Finland, Georgia, Greece, Hungary, Iceland, Ireland, Latvia, Lithuania, Luxembourg, Macedonia, Moldova, Monaco, Netherlands, Norway, Poland, Portugal, Romania, Russia, Slovakia, Slovenia, Sweden, Switzerland, Ukraine, Yugoslavia (Former).

Latin America Other: Bahamas, Barbados, Bermuda, Bolivia, Costa Rica, Dominica, Dominican Republic, Ecuador, El Salvador, Guatemala, Guyana, Honduras, Jamaica, Nicaragua, Panama, Paraguay, Trinidad and Tobago, Uruguay, Venezuela.

Middle East Other: Gaza Strip, Iran, Iraq, Jordan, Kuwait, Oman, Qatar, Saudi Arabia, Syria, United Arab Emirates, West Bank.

(1) Counts include full-time degree and non-degree students only, which includes transfer and special students, visiting undergraduates, and Extension School enrollees. Counts exclude executive education and professional development programs. Countries listed above are for Fall 2003. Information on countries for enrollments in prior years can be obtained from the International Office.

Summer School Enrollment: Summer 1998 - 2003

Harvard Students by School ⁽¹⁾

	1998	1999	2000	2001	2002	2003
College	321	303	313	330	322	348
GSAS	37	43	55	62	61	56
Education	6	8	14	12	5	8
Extension	299	317	296	291	298	307
Other Harvard Schools	26	12	19	22	17	10
Subtotal	689	683	697	717	703	729

Other Students by Educational Level

Undergraduate	1,155	1,047	1,101	1,067	1,050	965
Graduate	1,883	1,623	1,667	1,642	1,522	1,748
Secondary School	1,211	1,217	1,244	1,190	1,320	1,130
Non-Degree	160	343	335	279	299	72
Subtotal	4,409	4,230	4,347	4,178	4,191	3,915
TOTAL	5,098	4,913	5,044	4,895	4,894	4,644

Non-Degree Headcount: Fall 1998 - 2003 ⁽²⁾

	1998	1999	2000	2001	2002	2003		
						Male	Female	Total
GSAS	212	214	215	144	204	89	108	197
Dental ⁽³⁾	45	40	53	31	40	19	26	45
Design	2	-	1	12	3	2	1	3
Divinity	35	32	30	45	18	6	5	11
Education	69	70	71	84	103	12	72	84
Government	18	9	15	13	8	4	5	9
Law	76	64	43	38	47	36	18	54
Public Health	1	1	-	3	1	-	-	-
Extension ⁽⁴⁾	5,276	5,186	4,933	4,483	4,945	2,205	2,553	4,758
TOTAL	5,734	5,616	5,361	4,853	5,369	2,373	2,788	5,161

(1) Counts include matriculating Harvard students enrolled in Harvard courses during the summer session.

(2) Non-degree enrollments include all students enrolled on October 15 in at least one class that is creditable toward a degree or formal award.

(3) Includes post-doctorate in clinical specialty certification programs.

(4) Counts are for the first semester only. This significantly undercounts yearly enrollment in the Extension School as a roughly equal number of new students might be enrolled in the second semester.

Fellowship Programs: Academic Year 2003 - 2004

Fellows	Male	Female	Total
Allied Institutions			
Arnold Arboretum	3	5	8
Center for Hellenic Studies	6	5	11
Dumbarton Oaks	16	18	34
Nieman Fellows	13	12	25
Ethics and the Professions	5	6	11
South African Fellows	6	-	6
Villa I Tatti	10	7	17
FAS			
WCFIA Fellows	12	7	19
Visiting Fellows	43	50	93
Rowland Institute	10	-	10
Bauer Center for Genomic Research	8	3	11
Warren Fellows ⁽¹⁾	7	5	12
W.E.B. DuBois Institute Fellows	9	5	14
Design			
Loeb Fellows	7	4	11
Divinity			
Ctr. for the Study of World Religions	11	10	21
Merrill Fellows	4	3	7
Ministers in Vicinity	5	-	5
Resident Fellows	1	-	1
Government			
Institute of Politics Fellows	8	5	13
Mason Fellows	46	27	73
National Security Fellows	17	5	22
Senior Executive Fellows	82	26	108
Law			
Olin Fellows	n/a	n/a	23
The Graduate Program	14	9	23
Public Health			
Ethical Issues in Int'l Health Research	3	4	7
Post Doctorate Fellows	86	91	177
Takemi Program	4	3	7
Bell Fellows	1	5	6
Fogarty Fellows	1	7	8
Harkness Fellow in Health Care Policy	1	-	1
Yerby Fellowship Program	2	2	4
Radcliffe Institute for Advanced Study			
RIAS Fellows ⁽²⁾	10	47	57
Subtotal	-	-	845
Medical and Dental School			
Research and Clinical Fellows ⁽³⁾			
	Male	Female	Total
Medical School - Quad	392	259	651
Medical School - Hospital	3772	2569	6,341
Dental School - Quad	26	10	36
Dental School - Hospital	63	15	78
Subtotal	4,253	2,853	7,106
TOTAL FELLOWS	-	-	7,951

(1) The Weatherhead Center for International Affairs includes Harvard Academy for International and Area Studies, Olin Institute for Strategic Studies, the Program on U.S. Japan Studies, and the Fellows Program.

(2) Radcliffe Institute for Advanced Study Fellows include Murray Research Center, Public Policy Center, Radcliffe Fellowship Program and Schlesinger Library.

(5) Includes Post-Doctoral Fellows, Interns and Residents

SOURCE: INTERNAL SURVEY

University Faculty: Fall 2003 ⁽¹⁾

	Head Count			Full-time Equivalent
	Male	Female	Total	
Arts and Sciences				
Tenured	348	85	433	426.4
Associate Professor	36	14	50	50.0
Assistant Professor	96	48	144	140.8
Other Teaching Faculty	234	192	426	300.4
TOTAL	714	339	1,053	917.7

Design				
Tenured	21	3	24	21.2
Associate Professor	12	7	19	17.0
Assistant Professor	2	2	4	4.0
Other Teaching Faculty	36	18	54	17.4
TOTAL	71	30	101	59.6

Education				
Tenured	14	9	23	21.3
Associate Professor	2	3	5	4.5
Assistant Professor	2	8	10	10.0
Other Teaching Faculty	17	19	36	24.7
TOTAL	35	39	74	60.4

Law				
Tenured	58	12	70	66.3
Associate Professor	n/a	n/a	n/a	n/a
Assistant Professor	7	3	10	10.0
Other Teaching Faculty	59	29	88	38.3
TOTAL	124	44	168	114.6

Medical Quad-Based				
Tenured	69	10	79	78.4
Associate Professor ⁽²⁾	17	8	25	24.5
Assistant Professor ⁽²⁾	29	12	41	40.0
Other Teaching Faculty	83	72	155	153.4
TOTAL	198	102	300	296.2

University ⁽³⁾				
University Professor ⁽⁴⁾	14	1	15	14.5
Tenured	-	1	1	1.0
Other Teaching Faculty	8	-	8	4.4
TOTAL	22	2	24	19.9

	Head Count			Full-time Equivalent
	Male	Female	Total	
Business				
Tenured	67	14	81	80.6
Associate Professor	25	7	32	32.0
Assistant Professor	41	21	62	62.0
Other Teaching Faculty	35	7	42	33.7
TOTAL	168	49	217	208.3

Divinity				
Tenured	9	5	14	14.1
Associate Professor	2	2	4	4.0
Assistant Professor	2	3	5	5.0
Other Teaching Faculty	15	18	33	18.1
TOTAL	28	28	56	41.2

Government				
Tenured	31	6	37	35.0
Associate Professor	14	6	20	18.9
Assistant Professor	10	6	16	15.0
Other Teaching Faculty	34	17	51	42.9
TOTAL	89	35	124	111.8

Public Health				
Tenured	43	9	52	51.2
Associate Professor	20	14	34	30.8
Assistant Professor	35	16	51	47.0
Other Teaching Faculty	49	31	80	72.7
TOTAL	147	70	217	201.7

Dental				
Tenured	5	-	5	4.5
Associate Professor ⁽²⁾	4	4	8	8.0
Assistant Professor ⁽²⁾	7	3	10	10.0
Other Teaching Faculty	21	13	34	32.0
TOTAL	37	20	57	54.5

University Faculty				
Tenured	679	155	834	814.4
Associate Professor	132	65	197	189.7
Assistant Professor	231	122	353	333.8
Other Teaching Faculty	591	416	1,007	699.7
TOTAL	1,633	758	2,391	2,037.6

(1) Counts include all faculty currently appointed. Other Teaching Faculty includes non-tenured Professors; non-tenured Professors of Practice;

Director of Studies; Librarian III-Dumbarton Oaks; Preceptor, Senior; Lecturer; Preceptor; Professor, Adjunct; Professor, Assistant Adjunct; Professor, Associate Adjunct; Professor, Assistant Clinical; Professor, Associate Clinical; Visiting Faculty and Visiting Scientist.

(2) Medical and Dental Associate Professors and Assistant Professor counts include Associate Clinical Professors and Assistant Clinical Professors.

(3) University total includes University Professors and faculty based in other academic units.

(4) University Professors are special endowed positions and are the University's highest professorial distinction. These Professors were originally appointed to the following faculties: Arts and Sciences, eleven; Business, two; Government, one; and Law, one. They are not included in the individual School counts.

NOTE: In the Fall of 2002, the University implemented a new Human Resource system. The new system allows for additional classification such as breaking out tenured vs. non-tenured professors. Therefore, certain line items are not always comparable to prior years.

SOURCE: INTERNAL SURVEY OF EACH FACULTY

Faculty of Medicine Quad and Hospital-Based Personnel: Fall 2003 ⁽¹⁾

Medical Quad-based and Dental on-payroll counts are also included on the University Faculty counts exhibit.

	Head Count			Full-time
	Male	Female	Total	Equivalent
Medical				
Quad-based				
Tenured	69	10	79	78.4
Associate Professor	17	8	25	24.5
Assistant Professor	29	12	41	40.0
Other Teaching Faculty ⁽²⁾	83	72	155	153.4
TOTAL	198	102	300	296.2

Hospital-Based on Payroll				
Professor	133	10	143	132.4
Associate Professor	32	9	41	36.4
Assistant Professor	17	11	28	25.0
Other Faculty ⁽³⁾	37	33	70	64.4
TOTAL	219	63	282	258.2

Clinical Unpaid Appointments				
Professor	390	60	450	
Associate Professor	857	205	1,062	
Assistant Professor	1,107	506	1,613	
Other Faculty ⁽³⁾	3,282	2,557	5,839	
TOTAL	5,636	3,328	8,964	

	Head Count			Full-time
	Male	Female	Total	Equivalent
Dental				
On-Payroll				
Tenured	5	-	5	4.5
Associate Professor	4	4	8	8.0
Assistant Professor	7	3	10	10.0
Other Teaching Faculty ⁽²⁾	21	13	34	32.0
TOTAL	37	20	57	54.5

Clinical Unpaid Appointments				
Professor	4	1	5	
Associate Professor	12	1	13	
Assistant Professor	19	6	25	
Other Faculty ⁽³⁾	168	59	227	
TOTAL	203	67	270	

(1) The Faculties of the Medical and Dental Schools are made up of both quad and hospital-based personnel. Quad-based faculty are located in Medical and Dental School facilities and are primarily research oriented. Hospital-based faculty are located in affiliated hospitals and work in both research and clinical settings. Medical School faculty supervise degree students, post-doctoral residents, fellows and interns. FTE's are not available for the Clinical unpaid appointments in the Faculty of Medicine.

(2) Other Teaching Faculty includes non-tenured Professors; Instructor; Instructor, Clinical; Lecturer, Annual; Lecturer, Senior; Professor, Visiting; Professor, Visiting Associate and Research Associate.

(3) Other Faculty includes Administrative Officer (Faculty); Assistant, Clinical; Associate, Academic; Associate, Senior, Consultant; Fellow; House Master; Instructor; Instructor, Clinical; Lecturer, Annual; Lecturer, Senior; Lecturer, Visiting; Professor, Visiting; Professor, Visiting Assistant; Professor, Visiting Associate; Research Associate; Research Fellow, Senior; Scientist, Visiting; Teaching Associate and Visiting Other Faculty.

NOTE: In the Fall of 2002, the University implemented a new Human Resource system. The new system allows for additional classification such as breaking out tenured vs. non-tenured professors. Therefore, certain line items are not always comparable to prior years.

SOURCE: INTERNAL SURVEY OF EACH FACULTY

Non-Faculty Staff in the Schools ⁽¹⁾

Counts are Full-Time Equivalent Figures as of October 31, 2003

University-Wide Totals	University Funding			Sponsored Funding			University Sponsored		Grand Total	
	Administrative & Professional ⁽²⁾	Clerical & Technical	Service & Trades	Administrative & Professional ⁽²⁾	Clerical & Technical	Subtotal	Non-Faculty Academic Staff ⁽³⁾	Subtotal		
Faculties	3,270.1	2,864.8	72.6	462.3	661.2	7,331.0	389.0	892.4	1,281.4	8,612.3
Allieds	266.3	167.5	57.4	2.5	3.5	497.2	24.9	-	24.9	522.1
Central Administration ⁽⁴⁾	597.6	363.5	63.6	1.0	5.8	1,031.4	3.0	-	3.0	1,034.4
Service Departments ⁽⁴⁾	647.2	420.5	849.2	-	-	1,916.8	-	-	-	1,916.8
Non-Departmental & Special ⁽⁵⁾	49.8	51.9	-	-	-	101.7	-	-	-	101.7
TOTAL	4,831.0	3,868.1	1,042.7	465.8	670.5	10,878.1	416.9	892.4	1,309.3	12,187.3

Faculties	University Funding			Sponsored Funding			University Sponsored		Grand Total	
	Administrative & Professional ⁽²⁾	Clerical & Technical	Service & Trades	Administrative & Professional ⁽²⁾	Clerical & Technical	Subtotal	Non-Faculty Academic Staff ⁽³⁾	Subtotal		
Faculty of Arts and Sciences	569.2	600.3	2.0	62.7	103.7	1,337.8	212.6	253.3	465.9	1,803.7
Athletics	106.6	20.8	-	-	-	127.3	13.0	-	13.0	140.3
College Library	243.6	263.7	-	-	-	507.3	-	-	-	507.3
DEAS ⁽⁶⁾	45.2	50.6	9.5	25.8	7.3	138.4	23.1	72.4	95.5	233.8
Division of Continuing Education	69.2	55.4	-	-	-	124.5	-	-	-	124.5
GSAS	22.5	20.2	-	-	-	42.7	-	-	-	42.7
College Life and Student Dorms	111.6	67.3	-	-	-	178.8	5.0	-	5.0	183.8
Museums ⁽⁷⁾	77.7	79.8	-	1.2	4.6	163.3	7.0	8.0	15.0	178.3
Yenching	6.7	2.0	-	-	-	8.7	-	-	-	8.7
Subtotal	1,252.1	1,159.9	11.5	89.7	115.7	2,628.9	260.7	333.7	594.4	3,223.3
Business	434.5	275.8	-	1.5	-	711.8	-	-	-	711.8
Publishing Division	221.8	15.0	-	-	-	236.8	-	-	-	236.8
Subtotal	656.3	290.8	-	1.5	-	948.5	-	-	-	948.5
Dental	27.5	68.7	-	0.8	2.0	99.0	5.0	5.0	10.0	109.0
Design	50.6	49.6	-	-	0.5	100.6	1.0	-	1.0	101.6
Divinity	53.8	45.4	-	-	0.8	100.1	0.2	-	0.2	100.3
Education	123.2	111.0	-	33.1	19.5	286.8	2.0	1.2	3.2	290.0
Government	222.7	182.9	-	30.4	16.4	452.4	15.0	17.0	32.0	484.3
Law	225.5	199.6	-	16.1	7.5	448.8	4.0	-	4.0	452.8
Medical	462.8	531.5	61.1	119.6	281.3	1,456.3	72.6	343.3	415.9	1,872.2
Public Health	147.2	178.1	-	167.8	211.7	704.8	28.5	192.2	220.7	925.5
Radcliffe Institute for Advanced Study	48.5	47.3	-	3.3	5.9	104.9	-	-	-	104.9
Subtotal Faculties	3,270.1	2,864.8	72.6	462.3	661.2	7,331.0	389.0	892.4	1,281.4	8,612.3

(1) Figures do not include temporary employees (except limited regular guards and custodians), LHT's (less-than-half-time), students or teaching fellows. Counts include only filled positions.

(2) Counts Include all non-academic Administrative and Professional staff.

(3) Counts include Academic Tutor (Admin), Clinical Fellow, Coaching Assistants, Fellow (Admin), Internal Post Docs, Museum Interns, Research Associates, Research Fellow (Admin), Teaching Assistants, and Visiting Fellows.

(4) Core departments provide central functions of the University (accounts payable, HR benefits etc.) and are supported through funds from the President, Faculties, and departments. Service departments derive their revenue on a fee-for-service basis from internal customers.

(5) Signet Society, Credit Union, Harvard Student Agencies, LASPAU and some interdepartmental personnel.

(6) DEAS refers to Division of Engineering and Applied Sciences.

(7) Museums include Museum of Comparative Zoology, Peabody Museum and Semitic Museum.

NOTE: In the Fall of 2002, the University implemented a new Human Resource system. Therefore certain line items are not always comparable to prior years.

SOURCE: HUMAN RESOURCE PERSONNEL/PAYROLL DATABASE

Non-Faculty Staff in the Allied Institutions, Central Administration and Service Departments ⁽¹⁾

Counts are Full-Time Equivalent Figures as of October 31, 2003

	University Funding			Sponsored Funding			University	Sponsored	Grand	
	Administrative & Professional ⁽²⁾	Clerical & Technical	Service & Trades	Administrative & Professional ⁽²⁾	Clerical & Technical	Subtotal	Funding	Funding		
							Non-Faculty Academic Staff ⁽³⁾		Subtotal	Total
Allied Institutions										
American Repertory Theatre	43.5	22.4	-	-	-	65.9	1.4	-	1.4	67.3
Arnold Arboretum	29.9	17.0	18.0	-	-	64.8	6.0	-	6.0	70.8
Art Museums	80.5	61.2	39.4	2.0	3.5	186.6	11.0	-	11.0	197.6
Harvard Magazine	14.8	3.0	-	-	-	17.8	-	-	-	17.8
Inter-Faculty Initiatives	9.5	9.4	-	0.5	-	19.4	-	-	-	19.4
Institute of Politics	5.0	9.1	-	-	-	14.1	6.0	-	6.0	20.1
Joint Center for Housing Studies	6.6	8.8	-	-	-	15.4	-	-	-	15.4
Memorial Church	8.3	7.1	-	-	-	15.4	0.5	-	0.5	15.9
Nieman Foundation	8.4	6.6	-	-	-	14.9	-	-	-	14.9
University Press	54.2	22.8	-	-	-	77.0	-	-	-	77.0
Villa I Tatti ⁽⁴⁾	5.6	-	-	-	-	5.6	-	-	-	5.6
Subtotal	266.3	167.5	57.4	2.5	3.5	497.2	24.9	0.0	24.9	522.1
Central Administration - Core and Service Departments ⁽⁵⁾										
<i>Core departments in bold, service departments in italics</i>										
President & Provost, University Marshal and Office of the Governing Boards	34.9	22.9	1.0	-	-	58.7	-	-	-	58.7
<i>University Information Services ⁽⁶⁾</i>	196.0	98.4	13.0	-	-	307.5	-	-	-	307.5
<i>University Health Services</i>	123.1	136.3	-	-	-	259.4	-	-	-	259.4
VP Administration	125.9	59.2	-	-	-	185.1	1.0	-	1.0	186.1
<i>Harvard Real Estate Services</i>	85.0	69.9	-	-	-	154.9	-	-	-	154.9
<i>Dining Services</i>	78.0	21.0	366.6	-	-	465.6	-	-	-	465.6
<i>Faculty Club</i>	14.0	6.4	34.4	-	-	54.8	-	-	-	54.8
<i>University Operations Services</i>	100.3	57.1	434.6	-	-	592.0	-	-	-	592.0
VP Development & Alumni Affairs	113.5	59.3	-	-	-	172.9	-	-	-	172.9
<i>Fund Raising Campaigns</i>	50.8	31.4	-	-	-	82.2	-	-	-	82.2
VP Finance	177.4	140.2	-	-	-	317.6	1.0	-	1.0	318.6
VP General Counsel	52.0	28.1	62.6	-	-	142.7	-	-	-	142.7
<i>Security</i>	-	-	0.6	-	-	0.6	-	-	-	0.6
VP Government, Community and Public Affairs	26.8	17.9	-	-	-	44.7	1.0	-	1.0	45.7
University Library	67.1	35.8	-	1.0	5.8	109.7	-	-	-	109.7
Subtotal	1,244.8	784.0	912.8	1.0	5.8	2,948.2	3.0	-	3.0	2,951.2
Non-Departmental & Special ⁽⁷⁾	49.8	51.9	-	-	-	101.7	-	-	-	101.7

(1) Figures do not include temporary employees (except limited regular guards and custodians), LHT's (less-than-half-time), students or teaching fellows. Counts include only filled positions.

(2) Counts include all non-academic Administrative and Professional staff.

(3) Counts include Academic Tutor (Admin), Clinical Fellow, Coaching Assistants, Fellow (Admin), Internal Post Docs, Museum Interns, Research Associates, Research Fellow (Admin), Teaching Assistants, and Visiting Fellows.

(4) Additional personnel on local data systems are not included in this count.

(5) Core departments provide central functions of the University (accounts payable, HR benefits etc.) and are supported through funds from the President, Faculties, and departments. Service departments derive their revenue on a fee-for-service basis from internal customers.

(6) University Information Services includes Harvard Printing and Publishing Services.

(7) Non-Departmental and Special include Signet Society, Credit Union, Harvard Student Agencies, LASPAU and some interdepartmental personnel.

NOTE: In the Fall of 2002, the University implemented a new Human Resource system. Therefore certain line items are not always comparable to prior years.

SOURCE: HUMAN RESOURCE PERSONNEL/PAYROLL DATABASE

Tuition Charges: FY1984 - FY2004 ⁽¹⁾

Fiscal Year	College	GSAS	Business	Design	Divinity	Education	Government ⁽²⁾	Law	Medical/ Dental ⁽³⁾	Public Health
1984	\$8,752	\$8,752	\$9,000	\$8,600	\$5,790	\$8,320	\$8,367	\$7,900	\$11,200	\$7,667
1985	9,500	9,500	10,000	9,500	6,200	8,928	9,200	8,800	12,100	8,300
1986	10,266	10,266	10,750	10,165	6,640	9,552	9,840	9,650	13,100	8,826
1987	11,040	11,040	11,900	10,850	7,100	10,176	10,440	10,700	14,000	9,600
1988	11,645	11,645	13,300	11,500	7,600	10,752	11,075	11,400	14,850	10,575
1989	12,310	12,310	14,250	12,250	8,100	11,440	11,800	12,307	15,750	11,470
1990	13,085	13,085	15,350	13,110	8,630	12,232	12,570	13,400	16,850	12,515
1991	13,960	13,960	16,400	14,300	9,200	13,152	13,390	14,475	18,030	13,570
1992	14,860	14,860	17,500	15,450	9,940	14,192	14,662	15,560	19,110	14,790
1993	15,870	15,870	18,550	16,650	10,540	15,044	15,690	16,730	20,257	15,675
1994	16,856	16,856	19,750	17,483	11,070	15,796	16,631	17,750	21,260	16,775
1995	17,851	17,851	21,000	18,360	11,630	16,664	17,710	19,080	22,300	17,770
1996	18,838	18,838	22,700	19,276	12,220	17,581	18,650	20,500	23,192	18,840
1997	19,770	19,770	23,840	20,240	12,830	18,460	19,770	21,700	24,150	19,800
1998	20,600	20,600	25,000	21,252	13,480	19,476	20,720	22,800	25,200	20,890
1999	21,342	21,342	26,260	22,208	14,160	20,430	21,656	23,900	26,000	21,895
2000	22,054	22,054	27,250	23,163	14,870	21,410	22,520	25,000	27,000	22,950
2001	22,694	22,694	28,500	24,159	15,620	22,600	23,400	26,000	28,000	23,980
2002	23,457	23,370	30,050	25,195	16,400	23,720	24,320	27,500	29,000	25,050
2003	24,630	24,630	31,800	26,330	17,220	25,144	26,488	29,500	30,500	26,300
2004	\$26,066	\$26,066	\$33,650	\$27,910	\$18,080	\$26,628	\$28,580	\$31,250	\$32,000	\$27,670

Average Annual Growth Rates

	College	GSAS	Business	Design	Divinity	Education	Government	Law	Medical/ Dental	Public Health
20 YEAR	5.6%	5.6%	6.8%	6.1%	5.9%	6.0%	6.3%	7.1%	5.4%	6.6%
10 YEAR	4.5%	4.5%	5.5%	4.8%	5.0%	5.4%	5.6%	5.8%	4.2%	5.1%
5 YEAR	4.1%	4.1%	5.1%	4.7%	5.0%	5.4%	5.7%	5.5%	4.2%	4.8%
1 YEAR	5.8%	5.8%	5.8%	6.0%	5.0%	5.9%	7.9%	5.9%	4.9%	5.2%

(1) All amounts exclude the University Health Service fee.

(2) As of FY03, the School of Government implemented two tuition rate increases, one for 1st year students (shown above) and one for returning students (FY03 is \$25,440 and FY04 is \$27,704).

(3) FY99 Dental School tuition is \$26,050.

SOURCE: ANNUAL TUITION PROPOSALS APPROVED BY THE CORPORATION.

Comparative Undergraduate Tuition and Fees ⁽¹⁾

Ranked in descending order for FY2004

Institution	Actual		Change FY2003 - 2004		Notes	
	FY2003	FY2004	Percent	Nominal	FY2003	FY2004
Columbia Total	\$36,752	\$38,590	5.0%	\$1,838		
Tuition	27,706	29,262	5.6%	1,556		
Mandatory Fees	500	526	5.2%	26	Student Life Fee: \$500	Student Life Fee: \$526
Room & Board	8,546	8,802	3.0%	256		
Cornell Total	\$36,322	\$38,334	5.5%	\$2,012		
Tuition	27,270	28,630	5.0%	1,360		
Mandatory Fees	124	124	0.0%	-	Activity Fee: \$124	Activity Fee: \$124
Room & Board	8,928	9,580	7.3%	652		
MIT Total	\$36,060	\$38,310	6.2%	\$2,250		
Tuition	28,030	29,400	4.9%	1,370		
Mandatory Fees	200	200	0.0%	-	Activity Fee: \$200	Activity Fee: \$200
Room & Board	7,830	8,710	11.2%	880		
Penn. Total	\$36,368	\$38,132	4.9%	\$1,764		
Tuition	25,234	26,454	4.8%	1,220	General Fee: \$2,222	General Fee: \$2,328
Mandatory Fees	2,910	3,036	4.3%	126	Tech Fee: \$488	Tech Fee: \$502
Room & Board	8,224	8,642	5.1%	418	Rec Fee: \$200	Rec Fee: \$206
Brown Total	\$36,356	\$37,942	4.4%	\$1,586		
Tuition	28,352	29,710	4.8%	1,358		
Mandatory Fees	128	136	6.3%	8	Activity Fee: \$128	Activity Fee: \$136
Room & Board	7,876	8,096	2.8%	220		
Harvard Total	\$35,950	\$37,928	5.5%	\$1,978		
Tuition	25,650	27,208	6.1%	1,558	Student Services	Student Services
Mandatory Fees	1,798	1,852	3.0%	54	Fee: \$1,798	Fee: \$1,852
Room & Board	8,502	8,868	4.3%	366		
Stanford Total	\$36,123	\$37,905	4.9%	\$1,782		
Tuition	27,204	28,563	5.0%	1,359	Associated Students	Associated Students
Mandatory Fees	239	269	12.6%	30	of Stanford Univ. \$239	of Stanford Univ. \$269
Room & Board	8,680	9,073	4.5%	393		
Dartmouth Total	\$35,988	\$37,770	5.0%	\$1,782		
Tuition	27,600	28,965	4.9%	1,365		
Mandatory Fees	171	180	5.3%	9	Activity Fee: \$171	Activity Fee: \$180
Room & Board	8,217	8,625	5.0%	408		
Princeton Total ⁽²⁾	\$35,572	\$37,149	4.4%	\$1,577		
Tuition	27,230	28,540	4.8%	1,310		
Mandatory Fees	500	500	0.0%	-	Activity Fee: \$500	Activity Fee: \$500
Room & Board	7,842	8,109	3.4%	267	(Fresh, Soph & some Jr.)	(Fresh, Soph & some Jr.)
Yale Total	\$35,370	\$37,000	4.6%	\$1,630		
Tuition	27,130	28,400	4.7%	1,270		
Room & Board	8,240	8,600	4.4%	360		

(1) For comparative purposes, the health services fee is included in the tuition amount shown for all schools, with the following exception:

Cornell's health fee (\$1,041 in FY03 and \$1,059 in FY04), is optional and excluded.

(2) Princeton does not include its mandatory fee as part of its announced package. The mandatory fee has been included in the FY03 and FY04 totals for consistency and comparison.

SOURCE: INTERNAL SURVEY

Undergraduate Tuition Over Time: FY1984 - FY2004

Fiscal Year	Undergraduate Package						Economic Indicators ⁽¹⁾					
	Health Services			Student Services			U.S. CPI-U	Boston CPI-U	GDP IP Deflator (1996=100)	HEPI (1983=100)	Disposable Personal Income	Median Family Income Ages 45-54
	Tuition	Fee	Room	Board	Fee	Total						
1984	\$8,752	\$283	\$1,555	\$1,895	\$665	\$13,150	101.8	102.0	70.5	104.8	\$11,036	\$32,592
1985	9,500	300	1,635	1,925	740	14,100	105.8	106.6	73.0	110.8	12,215	34,482
1986	10,266	324	1,750	1,980	780	15,100	108.8	111.2	74.8	116.3	12,941	36,653
1987	11,040	350	1,885	2,035	835	16,145	111.2	113.9	76.6	120.9	13,555	38,861
1988	11,645	370	2,065	2,145	875	17,100	115.8	120.2	79.0	126.2	14,246	41,413
1989	12,310	405	2,400	2,145	950	18,210	121.2	127.8	82.1	132.8	15,312	42,192
1990	13,085	460	2,560	2,275	1,015	19,395	127.0	134.3	85.1	140.8	16,235	46,101
1991	13,960	490	2,700	2,425	1,080	20,655	133.9	142.3	88.5	148.1	17,176	47,164
1992	14,860	550	2,900	2,620	1,150	22,080	138.2	146.6	90.8	153.4	17,664	49,606
1993	15,870	584	3,075	2,765	1,220	23,514	142.5	151.1	92.9	157.9	18,524	50,079
1994	16,856	614	3,225	2,910	1,275	24,880	146.2	153.5	95.2	163.3	18,979	52,034
1995	17,851	634	3,370	3,040	1,335	26,230	150.4	156.7	97.2	168.3	19,624	54,379
1996	18,838	634	3,510	3,200	1,393	27,575	154.5	160.6	99.7	173.3	20,358	55,029
1997	19,770	654	3,659	3,336	1,477	28,896	158.9	165.7	100.8	178.6	21,069	57,161
1998	20,600	666	3,808	3,470	1,536	30,080	161.7	169.6	102.6	184.9	21,887	59,959
1999	21,342	686	3,940	3,574	1,590	31,132	164.5	173.2	103.9	189.1	23,037	61,833
2000	22,054	711	4,072	3,685	1,642	32,164	169.3	179.3	105.8	196.9	23,749	65,303
2001	22,694	745	4,190	3,792	1,689	33,110	175.1	187.6	108.2	206.5	25,237	68,082
2002	23,457	816	4,331	3,919	1,746	34,269	178.2	193.3	110.1	216.4	25,957	68,114
2003	24,630	1,020	4,461	4,041	1,798	35,950	182.1	200.0	111.5	221.9	27,170	n/a
2004	\$26,066	\$1,142	\$4,706	\$4,162	\$1,852	\$37,928	186.5	206.8	113.4	230.1	\$28,365	n/a

Average Annual Growth Rates

	Undergraduate Package						Economic Indicators ⁽¹⁾					
	Health Services			Student Services			U.S. CPI-U	Boston CPI-U	GDP IP Deflator (1996=100)	HEPI (1983=100)	Disposable Personal Income	Median Family Income Ages 45-54
	Tuition	Fee	Room	Board	Fee	Total						
20 YEAR	5.6%	7.2%	5.7%	4.0%	5.3%	5.4%	3.1%	3.6%	2.4%	4.0%	4.8%	n/a
10 YEAR	4.5%	6.4%	3.9%	3.6%	3.8%	4.3%	2.5%	3.0%	1.8%	3.5%	4.1%	n/a
5 YEAR	4.1%	10.7%	3.6%	3.1%	3.1%	4.0%	2.5%	3.6%	1.8%	4.0%	4.2%	n/a
1 YEAR	5.8%	12.0%	5.5%	3.0%	3.0%	5.5%	2.4%	3.4%	1.7%	3.7%	4.4%	n/a

(1) Economic indicators are averages of all index figures for the fiscal year, HEPI is based on a fiscal year, all other indices are based on the calendar year.

The FY2004 indicators are estimated using the five-year annual compound growth rate: US CPI-U 2.4%, Boston CPI-U 3.4%, GDP IP Deflator 1.7%, HEPI 3.7% and Disposable Personal Income 4.4%.

SOURCE: BUREAU OF LABOR STATISTICS, BUREAU OF ECONOMIC ANALYSIS AND ECONOMIC INDICATORS PUBLICATION.

Degree Student Financial Assistance: FY2003 ⁽¹⁾

Expressed in thousands of dollars

GRANTS

	Other			Total	As a % of Total for School
	Institutional	Federal	Outside		
College	\$62,795	\$5,290	\$11,087	\$79,172	76%
GSAS	50,169	14,227	5,302	69,698	69%
Business	10,309	-	2,094	12,404	19%
Dental	486	383	332	1,201	18%
Design	3,999	-	458	4,457	37%
Divinity	5,246	-	135	5,381	56%
Education	5,927	96	1,101	7,124	37%
Government	10,082	-	7,002	17,084	59%
Law	10,013	-	1,899	11,912	23%
Medical	6,250	489	4,640	11,379	50%
Public Health	3,367	3,375	4,373	11,116	68%
Extension	493	112	31	636	19%
ART	94	-	41	135	9%
TOTAL	\$169,230	\$23,972	\$38,496	\$231,698	52%

Grants

Institutional grants are from University unrestricted and restricted monies.

Federal grants include all Federal programs in each school including programs such as the Pell grant, SEOG or graduate training grants.

Outside grants include state and private support of students. In some schools, these numbers may include corporate sponsorship or other sponsored billing.

LOANS

	Other			Total	As a % of Total for School
	Institutional	Federal	Outside		
College	\$2,132	\$10,243	\$6,672	\$19,046	18%
GSAS	-	1,104	190	1,294	1%
Business	5,259	16,928	30,953	53,141	81%
Dental	172	4,857	571	5,600	82%
Design	-	6,034	501	6,535	55%
Divinity	-	3,312	-	3,312	35%
Education	35	10,131	1,446	11,612	60%
Government	-	7,196	3,846	11,043	38%
Law	3,907	27,940	7,508	39,355	74%
Medical	1,194	9,667	314	11,174	49%
Public Health	-	4,757	500	5,257	32%
Extension	-	2,072	718	2,790	81%
ART	-	583	472	1,055	71%
TOTAL	\$12,699	\$104,824	\$53,692	\$171,214	39%

Loans

Institutional loans are made to students from University capital without Federal guarantee.

Federal loan programs may involve capital from Harvard, or other private or Federal sources, loaned under Federal sponsorship.

Outside loans include private capital loaned to students or parents. Personal loans are not included here.

EMPLOYMENT

	Other		Total	As a % of Total for School	TOTAL Grant, Loans & Employment
	Work-Study (CWSP)	Term			
College	\$759	\$4,750	\$5,509	5%	\$103,727
GSAS	461	30,248	30,709	30%	101,701
Business	-	-	-	0%	65,545
Dental	24	-	24	0%	6,825
Design	887	76	963	8%	11,955
Divinity	902	-	902	9%	9,594
Education	749	-	749	4%	19,485
Government	231	538	768	3%	28,896
Law	922	666	1,588	3%	52,855
Medical	123	-	123	1%	22,677
Public Health	42	-	42	0%	16,415
Extension	-	-	-	0%	3,426
ART	304	-	304	20%	1,494
TOTAL	\$5,403	\$36,278	\$41,682	9%	\$444,594

Employment

Work-Study is a Federally-sponsored partnership with colleges and universities to provide students with the opportunity to work while in school.

Other term earnings reflect on-campus earnings by students who are not part of the work-study program. Jobs include casual employment, teaching fellowships, research assistantships and resident tutors.

(1) Amounts do not include the Law School, Business School or the School of Government funding for graduates in the Low Income Protection Plan/Loan Repayment Assistance Programs.

SOURCE: INTERNAL SURVEY

Federal Sponsored Research: FY2002 - FY2003

Expressed in thousands of dollars

	FY2002			FY2003			Change in Total Exp. 2002/2003	FY2003 Indirect as % of Total
	Direct Costs	Indirect Costs	Total Costs	Direct Costs	Indirect Costs	Total Costs		
ACADEMIC DEPARTMENTS								
FAS								
Arts & Sciences	\$44,603	\$18,194	\$62,797	\$47,973	\$20,068	\$68,041	8.4%	29.5%
Division of Engineering and Applied Sciences	19,181	7,990	27,171	18,918	7,340	26,258	(3.4%)	28.0%
Harvard College Library	89	7	96	85	7	91	(5.0%)	7.4%
Museum of Comparative Zoology/Peabody Museum	2,184	601	2,785	2,178	610	2,789	0.1%	21.9%
College Life, Athletics, Grad Dorms	-	-	-	-	-	-	-	-
FAS Subtotal	\$66,057	\$26,791	\$92,848	\$69,154	\$28,026	\$97,180	4.7%	28.8%
School of Business Administration	-	-	-	55	35	90	-	38.6%
School of Dental Medicine	3,085	817	3,902	2,434	497	2,931	(24.9%)	17.0%
School of Design	1,405	365	1,770	770	235	1,005	(43.2%)	23.3%
Divinity School	-	-	-	40	-	40	-	-
Graduate School of Education	6,010	1,000	7,011	5,160	877	6,037	(13.9%)	14.5%
JFK School of Government	7,364	2,400	9,764	7,504	2,337	9,841	0.8%	23.7%
Law School	269	52	321	162	13	174	(45.8%)	7.2%
Medical School	114,168	48,160	162,328	124,220	51,652	175,872	8.3%	29.4%
School of Public Health	83,816	31,457	115,273	87,565	29,714	117,279	1.7%	25.3%
Radcliffe Institute for Advanced Study	220	108	328	371	179	550	67.5%	32.5%
Other Faculties Subtotal	\$216,338	\$84,358	\$300,696	\$228,280	\$85,538	\$313,818	4.4%	27.3%
Other Academic Departments ⁽¹⁾	\$219	\$41	\$260	\$828	\$36	\$864	232.3%	4.1%
Service and Other Departments ⁽²⁾	\$258	\$72	\$330	\$680	\$124	\$803	143.3%	15.4%
GRAND TOTAL ⁽³⁾	\$282,872	\$111,262	\$394,135	\$298,942	\$113,723	\$412,664	4.7%	27.6%

(1) Includes Arnold Arboretum, Harvard University Art Museums, Nieman Foundation, Joint Center for Housing Studies and Villa I Tatti.

(2) Includes Central Administration, Memorial Church, University Library and University Health Services.

(3) Totals include both Federal and Federal Once-Removed (Federal Once-Removed total cost for FY2002 is \$42,937 and for FY2003 is \$47,995). Totals exclude financial aid.

SOURCE: OFFICE OF SPONSORED RESEARCH - FINANCIAL SERVICES

Federal Research by Agency: FY2002 - FY2003

Expressed in thousands of dollars

	FY2002	FY2003	% Change	FY2003 Total as % of Federal Total
Department of Health & Human Services				
National Institutes of Health	\$283,112	\$297,035	4.9%	72.0%
Other DHHS	18,549	22,714	22.5%	5.5%
Subtotal	\$301,661	\$319,749	6.0%	77.5%
Department of Defense				
Department of the Navy	5,246	7,820	49.1%	1.9%
Department of the Army	5,926	4,642	(21.7%)	1.1%
Department of the Air Force	3,515	3,726	6.0%	0.9%
Defense Advanced Research Projects Agency ⁽¹⁾	1,882	2,872	52.6%	0.7%
Subtotal	\$16,569	\$19,060	15.0%	4.6%
National Science Foundation	32,665	30,437	(6.8%)	7.4%
Department of Energy	8,751	10,701	22.3%	2.6%
Nat'l. Aeronautics & Space Administration	9,803	9,402	(4.1%)	2.3%
Department of Education	6,634	6,096	(8.1%)	1.5%
Agency for International Development	4,286	4,153	(3.1%)	1.0%
Environmental Protection Agency	4,025	4,077	1.3%	1.0%
Department of State	1,581	1,705	7.8%	0.4%
Department of Justice	2,884	1,491	(48.3%)	0.4%
Department of Housing and Urban Development	1,964	1,132	(42.4%)	0.3%
Nat'l. Endowment for the Humanities	613	1,033	68.5%	0.3%
Department of Commerce	802	979	22.0%	0.2%
Department of Transportation	304	348	14.7%	0.1%
General Services Administration	14	238	(1,660.7%)	0.1%
Department of Veterans Affairs	327	174	(46.9%)	0.0%
Department of Agriculture	336	108	(67.9%)	0.0%
National Endowment for the Arts	3	48	1,832.0%	0.0%
Central Intelligence Agency	284	45	(84.2%)	0.0%
Other ⁽²⁾	630	1,690	168.3%	0.4%
GRAND TOTAL ⁽³⁾	\$394,135	\$412,664	4.7%	100.0%

(1) Includes Other - Department of Defense.

(2) Other includes U.S. Information Agency, and 10 other Federal Agencies.

(3) Totals include both Federal and Federal Once-Removed (Federal Once-Removed total cost for FY2002 is \$42,937 and for FY2003 is \$47,995). Totals exclude financial aid.

SOURCE: OFFICE OF SPONSORED RESEARCH - FINANCIAL SERVICES

Non-Federal Sponsored Research: FY2002 - FY2003

Expressed in thousands of dollars

	FY2002			FY2003			Change in Total Exp. 2002/2003	FY2003 Indirect as % of Total
	Direct Costs	Indirect Costs	Total Costs	Direct Costs	Indirect Costs	Total Costs		
ACADEMIC DEPARTMENTS								
FAS								
Arts & Sciences	\$10,157	\$378	\$10,534	\$11,282	\$583	\$11,866	12.6%	4.9%
Division of Continuing Education	-	-	-	-	-	-	-	-
Division of Engineering and Applied Sciences	367	101	468	1,415	278	1,693	261.8%	16.4%
Harvard College Library	54	-	54	19	-	19	(65.2%)	-
Museum of Comparative Zoology/ Peabody Museum	202	6	207	147	2	149	(28.1%)	1.5%
College Life, Athletics, Grad Dorms	12	-	12	-	-	-	0.0%	0.0%
FAS Subtotal	\$10,790	\$484	\$11,275	\$12,863	\$863	\$13,726	21.7%	6.3%
School of Business Administration	167	6	173	190	4	194	-	2.0%
School of Dental Medicine	344	115	459	344	60	404	(12.1%)	14.8%
School of Design	111	(2)	109	212	9	221	103.6%	4.0%
Divinity School	304	37	341	767	49	816	139.5%	6.0%
Graduate School of Education	9,242	674	9,916	8,181	656	8,837	(10.9%)	7.4%
JFK School of Government	20,780	2,750	23,530	16,446	2,116	18,562	(21.1%)	11.4%
Law School	2,802	139	2,940	4,748	273	5,021	70.8%	5.4%
Medical School	42,273	4,923	47,197	41,185	3,357	44,541	(5.6%)	7.5%
School of Public Health	26,089	3,438	29,526	27,877	4,018	31,895	8.0%	12.6%
Radcliffe Institute for Advanced Study	756	46	802	591	30	621	(22.6%)	4.8%
Other Faculties Subtotal	\$102,867	\$12,125	\$114,992	\$100,540	\$10,571	\$111,110	(3.4%)	9.5%
Other Academic Departments ⁽¹⁾	\$735	\$55	\$790	\$955	\$51	\$1,006	27.3%	5.1%
Service and Other Departments ⁽²⁾	\$809	\$103	\$912	\$401	\$39	\$440	(51.8%)	8.9%
GRAND TOTAL ⁽³⁾	\$115,202	\$12,768	\$127,970	\$114,758	\$11,525	\$126,283	(1.3%)	9.1%

(1) Includes Arnold Arboretum, Harvard University Art Museums, Nieman Foundation, Joint Center for Housing Studies and Villa I Tatti.

(2) Includes Central Administration, Memorial Church, University Library and University Health Services.

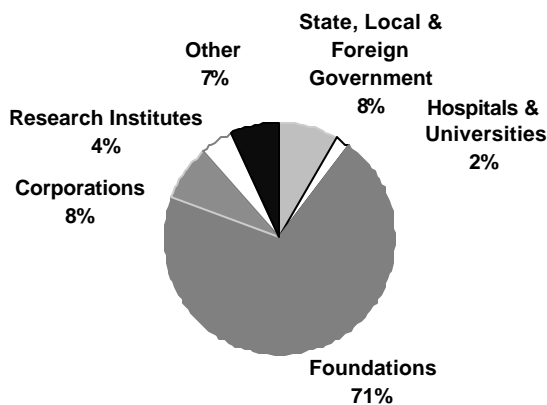
(3) Total excludes financial aid expenditures.

SOURCE: OFFICE OF SPONSORED RESEARCH - FINANCIAL SERVICES

Expenditures under Non-Federal Sponsored Research by Sponsor Source: FY2003

Expressed in thousands of dollars

	Hospitals & Other Universities	State, Local, & Foreign Government	Foundations	Corporations	Research Institutes	Other Sources	Total
FAS							
Faculty of Arts & Sciences	\$420	\$238	\$9,777	\$275	\$544	\$612	\$11,866
Division of Engineering and Applied Sciences	35	-	823	848	-	(13)	1,693
Harvard College Library	-	-	19	-	-	-	19
Museum of Comp. Zoology/Peabody Museum	-	-	149	-	-	-	149
College Life, Athletics, Grad Dorms	0	-	-	-	-	-	0
FAS Subtotal	\$455	\$238	\$10,768	\$1,123	\$544	\$599	\$13,726
School of Business Administration	-	-	194	-	-	-	194
School of Dental Medicine	-	-	191	162	-	51	404
School of Design	-	32	95	-	-	94	221
Divinity School	102	-	693	-	21	-	816
Graduate School of Education	72	594	7,522	270	181	197	8,837
JFK School of Government	84	1,040	13,037	1,222	36	3,143	18,562
Law School	-	50	4,392	525	0	55	5,021
Medical School	407	3,964	29,303	4,896	2,394	3,579	44,541
School of Public Health	1,135	4,705	21,226	1,491	2,170	1,167	31,895
Radcliffe Institute for Advanced Study	-	-	621	0	-	-	621
Other Faculties Subtotal	\$1,800	\$10,386	\$77,272	\$8,565	\$4,803	\$8,286	\$111,111
Other Academic Departments ⁽¹⁾	-	\$6	\$999	-	-	\$1	\$1,006
Service and Other Departments ⁽²⁾	-	-	\$211	\$229	-	-	\$440
GRAND TOTAL	\$2,254	\$10,629	\$89,251	\$9,916	\$5,347	\$8,886	\$126,283



(1) Includes Arnold Arboretum, Harvard University Art Museums, Nieman Foundation, Joint Center for Housing Studies and Villa I Tatti.

(2) Includes Central Administration, University Library and University Health Services.

SOURCE: OFFICE OF SPONSORED RESEARCH - FINANCIAL SERVICES

Historical Funding of Research by Sponsor

Expressed in thousands of dollars

Federal (Prime and Once-Removed)

	Fiscal Year				
	1999	2000	2001	2002	2003
National Institutes of Health	\$199,681	\$218,137	\$241,567	\$283,112	\$297,035
National Science Foundation	23,904	25,587	28,087	32,665	30,437
Other DHHS	12,705	14,308	19,109	18,549	22,714
Department of Defense	14,436	15,962	13,615	16,569	19,060
Department of Energy	8,178	8,649	8,428	8,751	10,701
Nat'l. Aeronautics & Space Administration	9,524	10,246	9,339	9,803	9,402
Department of Education	5,246	6,045	5,514	6,634	6,096
Agency for International Development	18,660	15,650	8,490	4,286	4,153
Environmental Protection Agency	3,218	4,446	4,398	4,025	4,077
Department of Justice	2,666	3,187	3,544	2,884	1,491
National Endowment for the Humanities	1,264	1,212	981	613	1,033
Other ⁽¹⁾	5,610	5,130	5,713	6,244	6,465
Federal Total	\$305,092	\$328,560	\$348,785	\$394,135	\$412,664

Non-Federal

	1999	2000	2001	2002	2003
Foundations	\$50,196	\$56,950	\$92,557	\$89,503	\$89,251
State, Local & Foreign Government	11,815	14,015	9,944	9,840	10,629
Corporations	15,026	15,471	18,425	13,875	9,916
Other Sources	12,141	9,779	10,028	8,828	8,886
Research Institutes	5,692	4,426	5,580	3,751	5,347
Hospitals & Other Universities	1,888	1,579	1,930	2,172	2,254
Non-Federal Total	\$96,758	\$102,220	\$138,464	\$127,970	\$126,283
Grand Total	\$401,849	\$430,780	\$487,249	\$522,104	\$538,947

Growth in Sponsored Projects

Expressed in millions of dollars

Fiscal Year	Expenditure Actual \$	% Change	Expressed	
			as FY03 \$	% Change in FY03 \$
1999	\$401.8	-	\$444.7	-
2000	430.8	7.2%	463.4	4.2%
2001	487.2	13.1%	506.8	9.4%
2002	522.1	7.2%	533.6	5.3%
2003	\$538.9	3.2%	\$538.9	1.0%

(1) Other includes U.S. Information Agency, Department of State, Department of Housing and Urban Development, Department of Commerce, Department of Transportation, General Services Administration, Department of Veterans Affairs, Department of Agriculture, National Endowment for the Arts, and 10 other Federal Agencies.

Agencies listed are for FY2003. Information on agencies in prior years can be obtained from the Office of Sponsored Research.

SOURCE: OFFICE OF SPONSORED RESEARCH - FINANCIAL SERVICES

Harvard University Library System

Harvard's Library is a system or federation of more than 90 library units, ranging in collection size from a few hundred volumes to several million volumes. Its mission is to support the University's teaching and research activities by acquiring, organizing, preserving, and making available library collections in all media and formats; by providing intellectual access to materials and information outside the University; and by providing facilities and services for research and study. This system of separate institutions with shared responsibilities works cooperatively to serve the needs of teachers, researchers and students throughout the University.

The University Library (HUL) is a department of the Central Administration headed by the Pforzheimer University Professor and Director. It coordinates efforts and provides central services critical to the library system. The programs include:

- Office for Information Systems - Oversees, plans and maintains the on-line catalog and other bibliographic databases
- Weisman Preservation Center and Special Collections Conservation - Reformats brittle at-risk books and works to conserve and restore special collections
- University Archives and Administrative Records Management - Holds the historical record of the University and other special collections
- Harvard Depository - An off-site, state-of-the-art storage and retrieval facility in Southborough, MA
- Digital Initiative - a multi-year effort to develop an operational infrastructure to integrate digital materials
- HUL Administration - Provides administrative services to the departments of HUL, publishes internal organs, newsletters, and a quarterly scholarly journal, and addresses external relations

The books and pamphlets recorded here constitute only a portion of the Library's collections. Some of the other holdings throughout the library system include:

- Microfilm holdings - reels, microcards, microfiches, and microprint sheets - exceed 5.5 million
- Manuscripts make up most of the University Archives and there are large collections in other units, notably the Law School Library (1.5 million) and the Houghton Library (4 to 5 million items)
- Ephemera - The Theatre Collection contains more than 5 million items (playbills, photographs, etc.); other ephemera in the Houghton fill about 4,000 running feet of shelving
- Visual collections of the Fine Arts Library include over 1.6 million items and number over 5 million University-wide
- Sound recordings in the Loeb Music Library number nearly 65,000
- Maps housed in the map collections of the Harvard College Library in Pusey and in the Kummel Geological Sciences Library exceed 500,000.

Summary of University Library Growth and Expenditures FY2003

	Collections Increase ⁽¹⁾			Expenditures (in \$000's) ⁽²⁾						
			Volumes & Pamphlets	Salaries & Wages		Books & Other		Other		Total
	Gross	Net		Benefits	Materials	Binding	Costs			
University Library (HUL)	1,073	1,073	115,498	\$5,991	\$1,390	\$10	\$8	\$5,388	\$12,787	
Faculty of Arts & Sciences										
Central Collections	193,743	175,675	9,283,845	26,586	6,255	13,829	545	18,082	65,297	
House Libraries	36	(17)	152,363	139	4	15	-	6	164	
Departmental & Divisional Libraries	6,551	6,501	348,027	868	187	2,239	48	107	3,449	
Special & Research Libraries	24,304	15,758	1,130,817	3,195	835	1,714	117	989	6,850	
Graduate Faculty Libraries	62,877	55,782	4,150,799	18,057	4,254	8,727	384	8,857	40,279	
Less Duplication	-	-	-	-	-	-	-	(5,185)	(5,185)	
University Library Totals	288,584	254,772	15,181,349	\$54,836	\$12,925	\$26,534	\$1,102	\$28,244	\$123,641	

(1) Net increase refers to the increase in volumes after accounting for replacement of previously-owned volumes.

(2) Due to rounding, expenditures may be slightly different than reported in the Library Annual Report.

SOURCE: HARVARD UNIVERSITY LIBRARY ANNUAL REPORT 2002-2003

Library Collections: FY2003

	Increase FY2003		Volumes & Pamphlets
	Gross	Net	FY2003 ⁽¹⁾
University Library			
University Archives	970	970	115,395
Weissman Preservation Center	103	103	103
Library of the Faculty of Arts & Sciences (Harvard College Library)			
Central Collections			
Cabot	3,459	2,984	217,824
Fine Arts	7,204	7,008	315,209
Geological Sciences	156	156	66,737
Harvard - Yenching	26,002	26,002	1,063,413
Hilles	2,541	1,898	188,494
Houghton	2,851	2,598	472,458
Lamont	3,786	205	197,437
Littauer	4,295	(850)	424,718
Loeb Music	7,240	7,040	237,653
Social Sciences Program	28,995	21,469	52,319
Tozzer (Peabody Museum)	4,125	4,108	238,235
Widener	103,089	103,057	5,809,348
House Libraries ⁽²⁾	36	(17)	152,363
Department & Divisional Libraries ⁽³⁾	6,551	6,501	348,027
Special Libraries			
Biblioteca Berenson	4,053	4,053	136,622
Botany Libraries	3,036	3,043	281,190
Career Reference	220	(148)	5,141
Center for Astrophysics: Wolbach Library	1,194	1,133	74,506
Center for European Studies	291	291	12,880
Center for Hellenic Studies	1,580	1,579	53,500
Center for International Affairs	81	(5,419)	7,170
Center for Middle Eastern Studies ⁽⁴⁾	-	-	-
Dumbarton Oaks Research Library	8,117	7,588	187,964
Fairbank Research Center	1,000	1,000	26,800
Gibb Islamic Seminar	4	4	7,498
Grossman Library for University Extension	240	(1,839)	4,537
Harvard Forest in Petersham	-	-	11,678
Harvard Planning Information Research Center	115	115	603
Milman Parry Collection of Oral Literature	2	2	1,802
Museum of Comparative Zoology	3,701	3,701	288,559
Nieman Collection of Contemporary Journalism	-	-	2,885
Davis Center (formerly Russian Research Center)	585	577	18,883
Ukrainian Research Institute: Reference	30	30	3,298
University Development Office	55	48	5,301
Graduate and Professional School Libraries			
Business: Baker Library	7,951	5,101	632,273
Design: Frances L. Loeb	4,075	3,715	280,824
Divinity: Andover - Harvard Theological	5,688	5,688	468,374
Education: Monroe C. Gutman	2,325	2,015	198,438
JFK School of Government ⁽⁵⁾	2,710	2,019	62,682
Law School	25,274	22,849	1,688,838
Medicine, Public Health and Dental Medicine			
Center for Population Studies	592	587	15,724
Francis A. Countway Library of Medicine	13,072	12,621	707,824
New England Primate Research Center	313	310	14,462
Radcliffe Institute for Advanced Study			
Henry A. Murray Research Center	17	17	277
Schlesinger Library on History of American Women	860	860	81,083
TOTAL UNIVERSITY COLLECTION	288,584	254,772	15,181,349

(1) Volumes and Pamphlets for individual libraries include volumes transferred to the Depository. Totals reflect corrections in count.

(2) Includes Adams, Cabot, Currier, Dudley, Dunster, Eliot, Kirkland, Leverett, Lowell, Mather, Pforzheimer, Quincy, Winthrop.

(3) Includes Afro-American Studies; Applied Sciences: Gordon McKay, Biochemical Sciences, Bio Labs; Celtic: F.N. Robinson; Chemistry; Classics: H.W. Smyth, Center on Contemporary Japan; English: Child Memorial; History: History of Science; Linguistics; Mathematics: G.D. Birkoff; Medieval Studies Library; Near Eastern Languages & Literatures; Paleography; Philosophy: Robbins; Physics; Psychology; Sanskrit & Indian Studies; Sociology & Social Relations; Statistics.

(4) The Center for Middle Eastern Studies Library closed in FY03. Collection either sold, or sent to Weatherhead Center for International Affairs and/or Houghton Library.

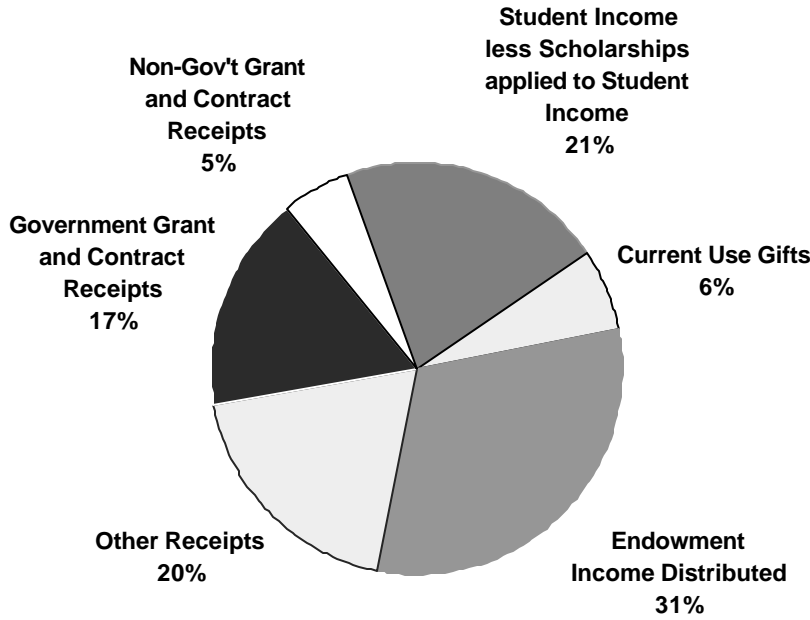
(5) Includes the Belfer Center for Science and International Affairs.

SOURCE: HARVARD UNIVERSITY LIBRARY ANNUAL REPORT 2002-2003

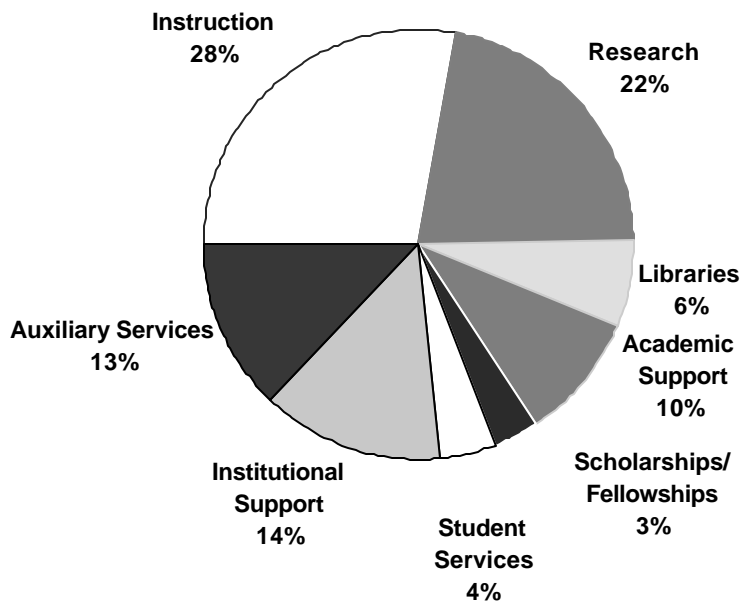
Total University Income and Expenses Year Ended June 30, 2003

Expressed in thousands of dollars

Total Income - \$2,472,692



Total Expenses - \$2,432,944



Departmental Operating Expenses Year Ended June 30, 2003

Expressed in thousands of dollars

	Salaries and Wages	Employee Benefits	Scholarships/ Student Awards
Faculty of Arts & Sciences			
Faculty of Arts & Sciences	\$275,847	\$50,033	\$122,450
Division of Continuing Education	15,198	2,418	3,724
FAS Museums	9,791	2,159	90
Total Faculty of Arts & Sciences	\$300,836	\$54,610	\$126,264
School of Business Administration	113,112	21,905	11,748
School of Dental Medicine	10,566	2,270	2,273
Graduate School of Design	12,722	2,346	4,325
Divinity School	10,446	2,023	5,338
Graduate School of Education	27,713	5,250	5,697
School of Government	49,187	9,916	11,781
Law School	48,771	9,663	11,198
Medical School	139,570	28,501	37,757
Radcliffe Institute for Advanced Study	7,351	1,736	2,283
School of Public Health	70,633	14,173	11,206
Other Faculties Subtotal	\$490,071	\$97,783	\$103,606
Total Faculties	\$790,907	\$152,393	\$229,870
Arnold Arboretum	3,567	815	12
Harvard University Art Museums	9,246	2,147	145
Joint Center for Housing Studies	822	191	21
Nieman Foundation	1,042	243	1,190
Villa I Tatti	1,776	722	669
Other Academic Departments Subtotal	\$16,453	\$4,118	\$2,037
Service Departments	\$103,642	\$24,799	-
Memorial Church	\$1,167	\$238	-
Central Administration ⁽²⁾	\$74,027	\$92,639	\$5,953
TOTAL UNIVERSITY EXPENSES	\$986,196	\$274,187	\$237,860

(1) Includes expense credits and transfers.

(2) Includes Harvard University Library and other University funds.

SOURCE: FINANCIAL ADMINISTRATION GENERAL ACCOUNTING OFFICE

Less: Financial Aid Applied against Income	Equipment and Supplies	Space and Occupancy	Depreciation	Other Expenses ⁽¹⁾	Total Expenses
(\$91,115)	\$49,599	\$96,888	\$52,485	\$109,926	\$666,113
(3,697)	1,473	1,735	658	13,716	35,225
-	1,660	3,073	1,091	5,563	23,427
(\$94,812)	\$52,732	\$101,696	\$54,234	\$129,205	\$724,765
(9,883)	26,036	21,237	13,074	85,125	282,354
(818)	2,227	1,493	1,017	4,788	23,816
(3,717)	1,561	2,679	781	8,008	28,705
(4,445)	1,219	2,146	1,055	3,885	21,667
(4,214)	1,894	4,372	1,612	16,585	58,909
(8,122)	5,127	11,479	2,277	25,181	106,826
(9,074)	5,879	13,760	4,452	25,857	110,506
(15,144)	41,593	53,096	26,757	109,755	421,885
-	651	1,361	487	4,704	18,573
(5,058)	10,178	21,788	9,506	63,565	195,991
(\$60,475)	\$96,365	\$133,411	\$61,018	\$347,453	\$1,269,232
(\$155,287)	\$149,097	\$235,107	\$115,252	\$476,658	\$1,993,997
-	374	768	193	1,622	7,351
(76)	4,099	1,059	1,419	6,171	24,210
-	52	170	-	429	1,685
-	131	204	2	1,340	4,152
-	694	617	180	1,299	5,957
(\$76)	\$5,350	\$2,818	\$1,794	\$10,861	\$43,355
-	\$40,679	(\$2,558)	\$24,588	\$16,464	\$207,614
-	\$266	\$774	\$87	\$750	\$3,282
(\$2,987)	\$3,720	\$5,021	\$26,351	(\$20,028)	\$184,696
(\$158,350)	\$199,112	\$241,162	\$168,072	\$484,705	\$2,432,944

Physical Plant: FY2003

The University owns and operates more than five hundred buildings of varying sizes and characteristics, spread over a wide geographic area. They encompass approximately 21.1 million gross square feet of space. The physical plant provides living space for students and faculty, research facilities to advance our base of knowledge, classroom and library spaces for the dissemination of knowledge, and space for administrative and support services.

Location ⁽¹⁾	Gross Square Footage of		Principal Activity on Site
	Acres	Buildings (in 000's)	
Cambridge, MA	223	13,178	Main Campus
Boston, MA	22	2,396	Medical and Dental Schools, School of Public Health
Boston (Allston)	344	3,779	Business School; Printing and Publisher; Athletics; Other
Boston (Jamaica Plain)	233	41	Arnold Arboretum
Watertown, MA	29	1,160	Arsenal Buildings
Weston, MA	66	11	Case Estates (Arnold Arboretum)
Somerville, MA	2	16	Affiliated Housing
Medford, MA	1		
Bedford, MA	79	11	Concord Field Station
Carlisle, MA	69		Concord Field Station
Concord, MA	605		Field Station (Museum of Comparative Zoology)
Marlborough, MA	50		Animal Research Center (NERPC)
Southborough, MA	87	161	Harvard Depository
Petersham, MA	2,648	71	Harvard Forest (Forestry, Botany)
Hamilton, MA	99		Harvard Forest
Phillipston, MA	205		Harvard Forest
Royalston, MA	57		Harvard Forest
Harvard, MA	37	20	Agassiz Cottage (Observatory)
Shrewsbury, MA	6	16	Artemas Ward Homestead (Museum)
Kittery Point & Sutton Island, ME	n/a	12	Howells Memorial & Kendall Houses
Ledyard, CT	n/a	21	Red Top, Crew Quarters
Washington, DC	n/a	150	Dumbarton Oaks & Center for Hellenic Studies
Florence, Italy	n/a	94	Villa I Tatti - Ctr. for Italian Renaissance Studies
TOTAL	4,862	21,138	

(1) In addition to locations listed above, Harvard has numerous smaller holdings.

SOURCE: HARVARD PLANNING AND REAL ESTATE

Physical Plant: FY2003

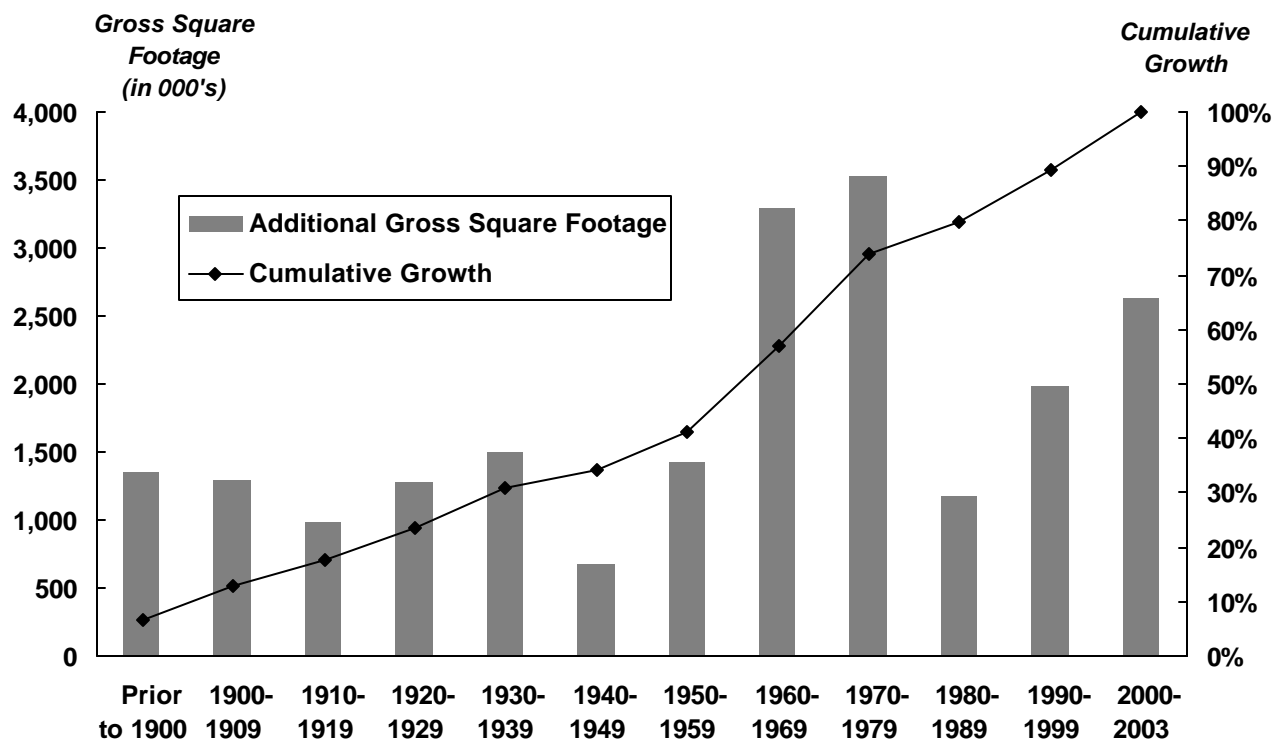
Building Ownership

	Number of Buildings	Gross Square Footage	
		of Buildings (in 000's)	As a % of Total
FAS	260	8,504	40.2%
Radcliffe	15	284	1.3%
Business	34	1,509	7.1%
Dental	2	52	0.2%
Design	2	179	0.8%
Divinity	7	180	0.9%
Education	6	215	1.0%
Government	4	264	1.2%
Law	20	925	4.4%
Medical	24	1,885	8.9%
Public Health	7	573	2.7%
Real Estate	155	5,576	26.4%
Central Administration	54	990	4.7%
TOTAL	590	21,138	100.0%

Primary Uses

	Gross Square Footage	
	of Buildings (in 000's)	As a % of Total
Residential/Dormitory	6,381	30.2%
Office/Classroom	4,871	23.0%
Lab/Studio	3,676	17.4%
Library	1,556	7.4%
Assembly/Museum	1,128	5.3%
Support	1,485	7.0%
Commercial	1,072	5.1%
Athletic	891	4.2%
Health Care	79	0.4%
TOTAL	21,138	100.0%

Additions to the Physical Plant



SOURCE: HARVARD PLANNING AND REAL ESTATE

Market Value of Endowment Funds as of June 30, 2003

Expressed in thousands of dollars

Individual Unit Value: \$1,013.51 ⁽¹⁾

	Endowment	Participating	Market Value
	Market Value ⁽¹⁾	Units	% of Total
Arts and Sciences ⁽²⁾	\$8,743,246	8,614,707	46.9%
Business	1,330,368	1,301,105	7.1%
Dental	120,992	119,378	0.6%
Design	244,803	241,539	1.3%
Divinity	346,614	341,993	1.9%
Education	294,038	290,118	1.6%
Government ⁽³⁾	582,141	567,855	3.1%
Law	927,308	911,443	5.0%
Medical	2,094,252	2,065,423	11.2%
Radcliffe Institute for Advanced Study	289,939	285,972	1.6%
Public Health	633,753	625,303	3.4%
Other Academic Departments ⁽⁴⁾	742,188	729,675	4.0%
Central Administration ⁽⁵⁾	2,284,532	2,246,885	12.3%
Subtotal	\$18,634,174	18,341,396	100.0%
Pledge Balances	445,244	-	-
Interests in Perpetual Trusts held by Others	215,317	-	-
Total Endowment	\$19,294,735	18,341,396	100.0%

Historical Market Value of Endowment

	June 30, 2000	June 30, 2001	June 30, 2002
Arts and Sciences ⁽²⁾	\$7,991,004	\$7,673,418	\$7,902,050
Business	1,260,151	1,214,511	1,192,032
Dental	122,656	115,081	111,771
Design	251,413	236,345	223,400
Divinity	357,154	338,822	321,475
Education	286,659	284,855	272,016
Government ⁽³⁾	541,678	559,857	531,909
Law	926,076	877,192	840,291
Medical	2,095,204	1,993,657	1,913,922
Radcliffe Institute for Advanced Study	313,376	304,942	256,352
Public Health	652,862	616,604	587,200
Other Academic Departments ⁽⁴⁾	1,396,457	1,214,162	683,920
Central Administration ⁽⁵⁾	2,324,960	2,221,290	2,110,918
Subtotal	\$18,519,650	\$17,650,736	\$16,947,256
Pledge Balances	303,950	308,356	348,264
Interests in Perpetual Trusts held by Others	324,688	300,107	222,501
Total Endowment	\$19,148,288	\$18,259,199	\$17,518,021

(1) Market value also includes endowment funds that are not unitized. This accounts for the difference between (unit price x number of units) and market value.

(2) Arts and Sciences includes: Continuing Education, DEAS, College Library, Museums, GSAS, Athletics, and College Life and Student Services.

As of July 1, 2000, Center for Hellenic Studies is included in Arts and Sciences. As of July 1, 2001, Dumbarton Oaks is included in Arts and Sciences.

(3) Government includes Institute of Politics.

(4) Other Academic Departments include: Arnold Arboretum, Center for Hellenic Studies (FY00), Dumbarton Oaks (FY00 and FY01), Harvard Institute for International Development, Harvard University Art Museums, Nieman Foundation and Villa I Tatti.

(5) In addition to Central Administration, includes the President's Funds, University Professorships, University Press, University Health Services and Memorial Church.

SOURCE: ANNUAL UNIVERSITY FINANCIAL REPORT

Historical Endowment Performance: FY1984 - FY2004

Fiscal Year	Unit Value at Beginning of the Year ⁽¹⁾	Dollar Value and Percentage Beginning Value Per Unit						Actual Distribution Per Unit ⁽³⁾	Spending Rate ⁽⁴⁾
		Income		Capital Gain		Total Return ⁽²⁾			
1984	\$171.05	\$10.71	6.3%	(\$16.92)	(9.9%)	(\$6.21)	(3.6%)	\$7.40	4.33%
1985	154.13	11.52	7.5%	28.34	18.4%	39.86	25.9%	7.58	4.92%
1986	182.47	12.53	6.9%	42.28	23.2%	54.81	30.0%	7.86	4.31%
1987	224.75	11.16	5.0%	32.03	14.3%	43.19	19.2%	8.09	3.60%
1988	256.78	10.41	4.1%	3.57	1.4%	13.98	5.4%	8.49	3.31%
1989	260.35	13.94	5.4%	18.27	7.0%	32.21	12.4%	10.16	3.90%
1990	278.62	14.57	5.2%	6.04	2.2%	20.61	7.4%	10.65	3.82%
1991	284.66	12.75	4.5%	(9.72)	(3.4%)	3.03	1.1%	11.96	4.20%
1992	274.94	11.87	4.3%	20.26	7.4%	32.13	11.7%	12.44	4.52%
1993	295.20	11.70	4.0%	36.68	12.4%	48.38	16.4%	14.08	4.77%
1994	331.88	13.19	4.0%	19.05	5.7%	32.24	9.7%	15.01	4.52%
1995	350.93	11.90	3.4%	45.87	13.1%	57.77	16.5%	16.07	4.58%
1996	396.80	15.23	3.8%	86.03	21.7%	101.26	25.5%	17.20	4.33%
1997 ⁽⁵⁾	482.83	14.60	3.0%	106.53	22.1%	121.13	25.1%	19.84	4.11%
1998	589.36	10.64	1.8%	108.45	18.4%	119.09	20.2%	21.90	3.72%
1999	697.81	21.57	3.1%	60.94	8.7%	82.51	11.8%	23.14	3.32%
2000	758.75	14.42	1.9%	227.20	29.9%	241.62	31.8%	30.15	3.97%
2001	985.95	19.10	1.9%	(45.75)	(4.6%)	(26.65)	(2.7%)	32.92	3.34%
2002	940.20	20.63	2.2%	(25.42)	(2.7%)	(4.79)	(0.5%)	45.32	4.82%
2003	914.78	13.88	1.5%	98.73	10.8%	112.61	12.3%	47.11	5.15%
2004	\$1,013.51	*	*	*	*	*	*	\$49.70	4.90%

Average Annual Growth Rates

20 YEAR	9.3%	-	-	-	-	-	-	10.0%	-
10 YEAR	11.8%	-	-	-	-	-	-	12.7%	-
5 YEAR	7.8%	-	-	-	-	-	-	16.5%	-
1 YEAR	10.8%	-	-	-	-	-	-	5.5%	-

(1) Harvard's endowment comprises over 10,500 separate funds. Each fund has been unitized and the separate funds hold "units of the endowment" as their value. Column one shows the value of units as of July 1.

(2) The total return percentage reported by the Harvard Management Company is slightly higher than the one listed above as it is calculated based on reinvestment of all earnings on a monthly basis.

(3) As of July 1, from income earned the previous fiscal year.

(4) Distribution per unit (actual or effective) divided by beginning of year unit value (actual or effective).

(5) Net of the \$1.28 per unit fringe supplement, the FY97 payout is \$18.56, and the spending rate is 3.84%.

* Value not available at time of publication.

SOURCE: INTERNAL ENDOWMENT REPORTS

Harvard College is the oldest institution of higher learning in the United States. It was established in 1636 by vote of the Great and General Court of the Massachusetts Bay Colony and was named for its first benefactor, John Harvard of Charlestown, Massachusetts. Upon his death in 1638, the young minister left his library and half his estate to the new College. Founded 16 years after the arrival of the Pilgrims at Plymouth, the College has grown from nine students with a single master to an enrollment of more than 19,000 degree candidates, including undergraduates and students in 10 graduate and professional schools.

Staff Photo Jon Chase/Harvard News Office

