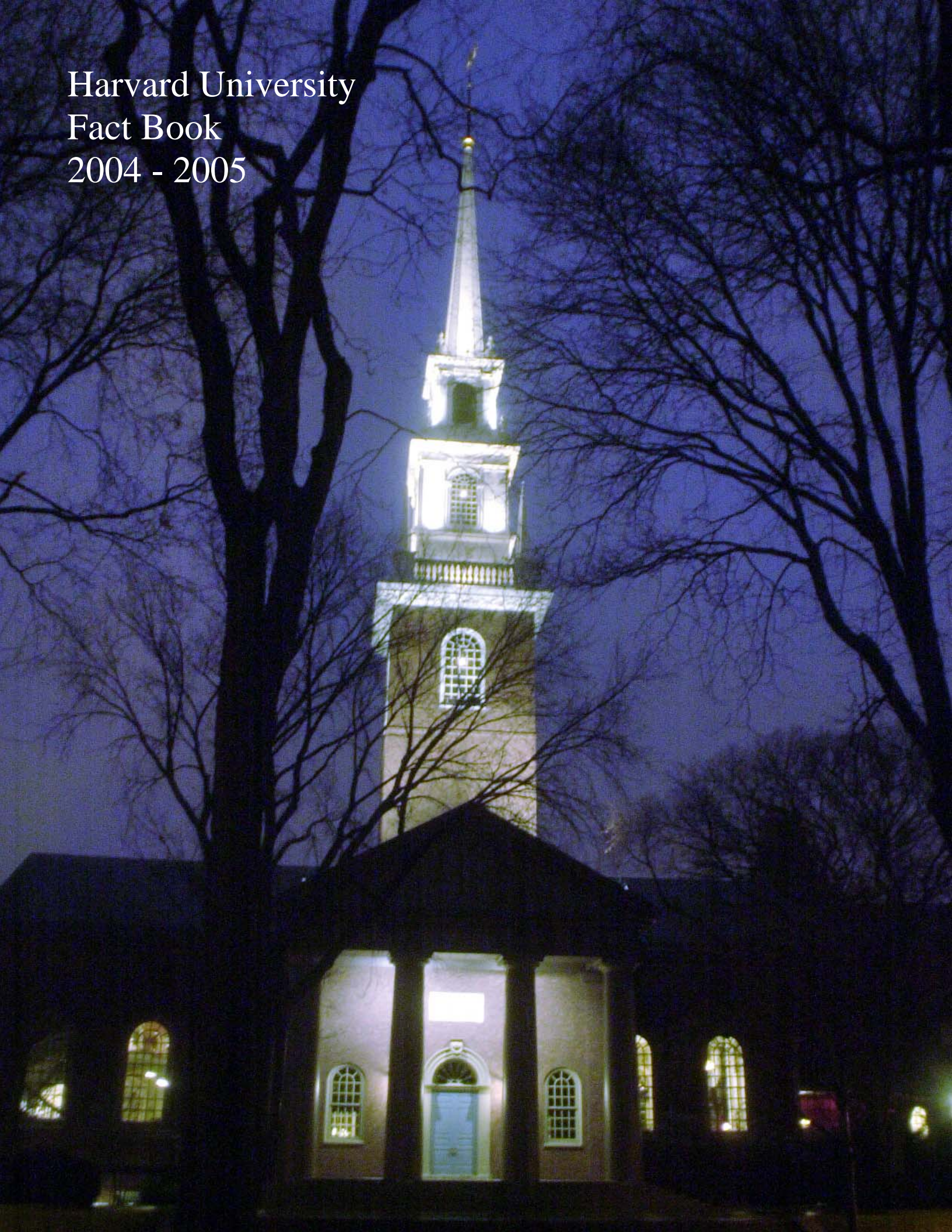


Harvard University
Fact Book
2004 - 2005





For user convenience, many Fact Book pages contain embedded Excel data tables. Double-click on the graph icons (such as the one shown here) to open these tables.

ORGANIZATION	Pages
<u>Central Administration</u>	2
<u>Faculties and Allied Institutions</u>	3
<u>Research and Academic Centers</u>	4 – 5
PEOPLE	Pages
<u>Degree Student Enrollment</u>	6 – 9
<u>Degrees Conferred</u>	10 – 13
<u>International Students</u>	14 – 15
<u>Non-Degree Students and Fellowship Programs</u>	16 – 17
<u>Faculty Counts</u>	18 – 19
<u>Staff Counts</u>	20 – 21
RESOURCES	Pages
<u>Tuition, Fees, and Financial Aid</u>	22 – 25
<u>Sponsored Research</u>	26 – 30
<u>Library</u>	31 – 32
<u>FY2004 Income and Expense</u>	33 – 34
<u>Physical Plant</u>	35 – 36
<u>Endowment</u>	37 – 38

The Harvard University Fact Book is published by:
 Office of Budgets, Financial Planning and Institutional Research
 Holyoke Center 780, Cambridge, MA 02138
 The address for the electronic version is:
<http://vpf-web.harvard.edu/factbook/>

If you would like more information about data contained in the Fact Book, contact:
 JASON DEWITT, Data Resource Specialist

(617) 495-0591, E-mail: jason_dewitt@harvard.edu

RUTH LOESCHER, Institutional Research Coordinator

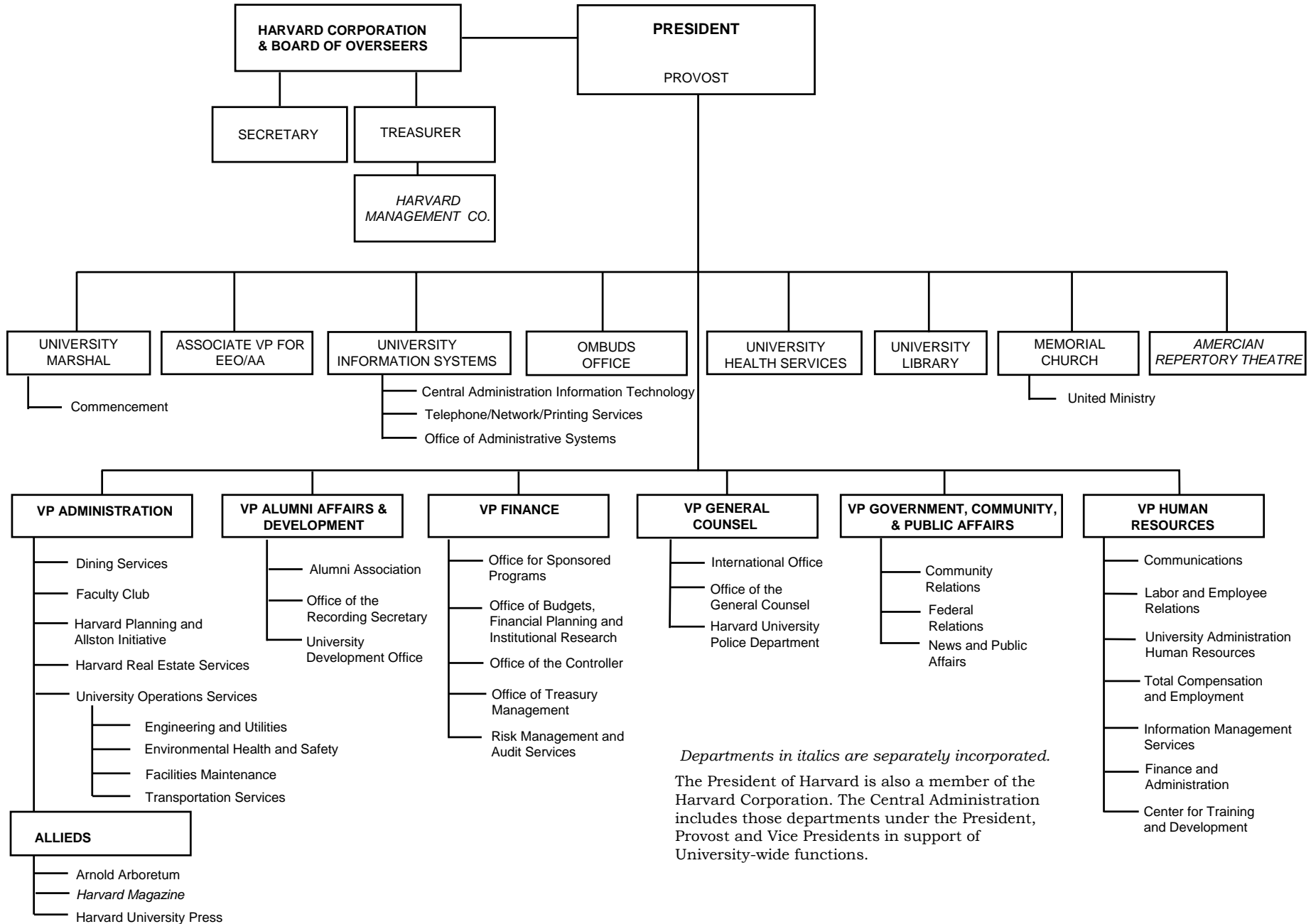
(617) 496-3568, E-mail: ruth_loescher@harvard.edu

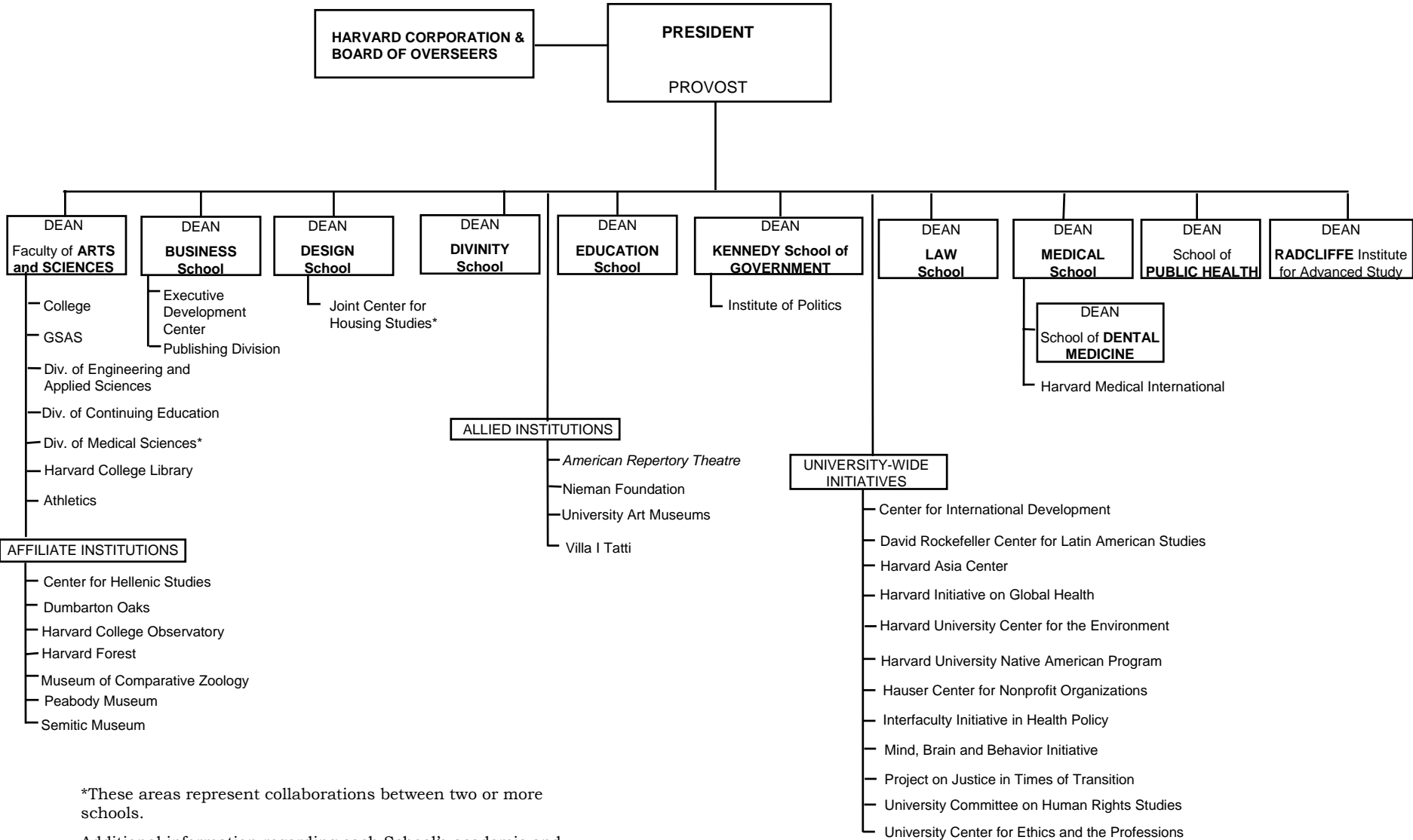
NINA ZIPSER, Director of Institutional Research

(617) 384-9236, E-mail: nina_zipser@harvard.edu

Changes to content after publication are reflected on the web version of the Fact Book.

Copyright 2005 by the President and Fellows of Harvard College





*These areas represent collaborations between two or more schools.

Additional information regarding each School's academic and research programs can be found at the following website:
www.harvard.edu/academics/

A list of research and academic centers affiliated with the Schools can be found on pages 4-5 of the Fact Book.

Departments in italics are separately incorporated.

Harvard University Research and Academic Centers ⁽¹⁾

FACULTY of ARTS and SCIENCES

Aga Khan Program for Islamic Architecture ⁽²⁾
 Asia Center**
 Bauer Center for Genomics Research
 Derek Bok Center for Teaching and Learning
 Center for American Political Studies
 Center for Hellenic Studies
 Center for Jewish Studies
 Center for Middle Eastern Studies
 Center for Nanoscale Systems
 Center for Systems Neuroscience
 Davis Center for Russian and Eurasian Studies
 W.E.B. Dubois Institute for African and African-American Research
 Dumbarton Oaks
 Fairbank Center for East Asian Research
 Minda de Gunzburg Center for European Studies
 Harvard MIT Data Center
 Harvard Smithsonian Center for Astrophysics
 Harvard Stem Cell Institute*
 Harvard University Center for the Environment **
 Harvard-Yenching Institute
 Humanities Center
 Institute for Quantitative Social Science
 Korea Institute
 Materials Research Science and Engineering Center
 Program for Evolutionary Dynamics
 Reischauer Institute of Japanese Studies
 David Rockefeller Center for Latin American Studies**
 Rowland Institute
 Technology and Entrepreneurship at Harvard
 Ukrainian Research Institute
 Charles Warren Center for Studies in American History
 Weatherhead Center for International Affairs
 Harvard Academy for International and Area Studies***
 Olin Institute for Strategic Studies***
 Program on U.S. - Japan Relations***

BUSINESS

California Research Center
 C. Roland Christensen Center for Teaching and Learning

Global Initiative
 Asia-Pacific Research Center
 Europe Research Center
 India Research Center
 Japan Research Office
 Latin America Research Center
 Health Care Initiative
 Institute for Strategy and Competitiveness *
 Leadership Initiative
 Arthur M. Rock Center for Entrepreneurship
 Social Enterprise Initiative

DESIGN

Center for Technology and Environment
 Joint Center for Housing Studies*
 Real Estate Academic Initiative

DIVINITY

Center for the Study of World Religions
 Summer Leadership Institute
 Women's Studies in Religion Program

EDUCATION

The Civil Rights Project at Harvard*
 Harvard Family Research Project
 National Center for the Study of Adult Learning and Literacy
 The Principal's Center
 Project Zero
 WIDE World Initiative

GOVERNMENT

The Roy and Lila Ash Institute for Democratic Governance and Innovation
 Robert and Renee Belfer Center for Science and International Affairs
 Carr Center on Human Rights Policy
 Center for Business and Government
 Center for International Development at Harvard University *
 Center for Public Leadership
 Hauser Center for Nonprofit Organizations *
 Edmond J. Safra Foundation Center for Ethics*
 Joan Shorenstein Center on the Press, Politics and Public Policy
 A. Alfred Taubman Center for State and Local Government ⁽³⁾
 Malcolm Wiener Center for Social Policy
 Women and Public Policy Program

(1) The Research and Academic Centers listed are those affiliated with the Schools.

(2) The Aga Khan Program for Islamic Architecture is a joint program with Massachusetts Institute of Technology.

(3) The A. Alfred Taubman Center for State and Local Government includes the Institute on Government Innovation and the Rappaport Institute for Greater Boston.

*These areas represent collaborations between two or more schools.

** These Programs are located in particular Schools, but are considered University-Wide initiatives.

***These Programs are all housed and administered within the Weatherhead Center

SOURCE: SCHOOLS

Harvard University Research and Academic Centers ⁽¹⁾

UNIVERSITY-WIDE INITIATIVES*

Africa Initiative
 Asia Center
 Center for International Development at Harvard University
 David Rockefeller Center for Latin American Studies
 Harvard Initiative for Global Health
 Harvard Stem Cell Institute
 Harvard University Center for the Environment
 Harvard University Native American Program
 Hauser Center for Nonprofit Organizations
 Interfaculty Initiative in Health Policy
 Mind, Brain and Behavior Initiative
 Program on Health Systems Improvement
 University Center for Ethics and the Professions
 University Committee on Human Rights Studies

MEDICINE

Center for Craniofacial Tissue Engineering
 Center for Genetics and Genomics, Harvard Medical School-Partners Healthcare
 Center for Health and the Global Environment
 Center for Hereditary Deafness
 Center for Immunological Tolerance
 Center for Integration of Medicine and Innovative Technology
 Center for Magnetic Resonance
 Center for Mental Health and Media
 Center for Neurodegeneration and Repair
 Center for Neurofibromatosis and Allied Disorders
 Center for Palliative Care
 Center for Skin Disease Research
 Center of Excellence in Women's Health
 Dana Farber/Harvard Cancer Center*
 Division for Research and Education in Complementary and Integrative Medical Therapies
 Division of AIDS
 Division of Emergency Medicine
 Division of Health Care Policy Research and Education
 Division of Health Sciences and Technology
 Division of Medical Ethics
 Division of Nutrition
 Division of Primary Care
 Division of Service Learning
 Division of Sleep Medicine

Harvard Clinical Research Institute
 Institute for Chemistry and Cell Biology*
 Institute of Neuroscience, Harvard-Mahoney*
 Institute of Proteomics
 NERCE/BEID*
 New England Regional Primate Center
 Program on Head and Neck Oncology

LAW

Ames Foundation and Selden Society
 Berkman Center for Internet & Society
 The Civil Rights Project at Harvard
 East Asian Legal Studies Program
 European Law Research Center
 Fund for Tax and Fiscal Policy Research
 Harvard Law School History Project
 Human Rights Program
 International Tax Program
 Islamic Legal Studies Program
 John M. Olin Center for Law, Economics and Business
 Labor and Worklife Program
 Program on Corporate Governance
 Program on Empirical Legal Studies
 Program on International Financial Systems
 Program on Negotiation
 Program on the Legal Profession
 Project on Justice in Times of Transition**

PUBLIC HEALTH

Center for Health Communications
 Francois-Xavier Bagnoud Center for Health and Human Rights
 Harvard School of Public Health AIDS Initiative
 Harvard Center for Cancer Prevention
 Harvard Center for Population and Development Studies
 Harvard Center for Society and Health
 Harvard Injury Control Center

RADCLIFFE INSTITUTE FOR ADVANCED STUDY

Radcliffe Institute Fellowship Program
 Henry A. Murray Research Center
 Arthur and Elizabeth Schlesinger Library on the History of Women in America

(1) The Research and Academic Centers listed are those affiliated with the Schools.

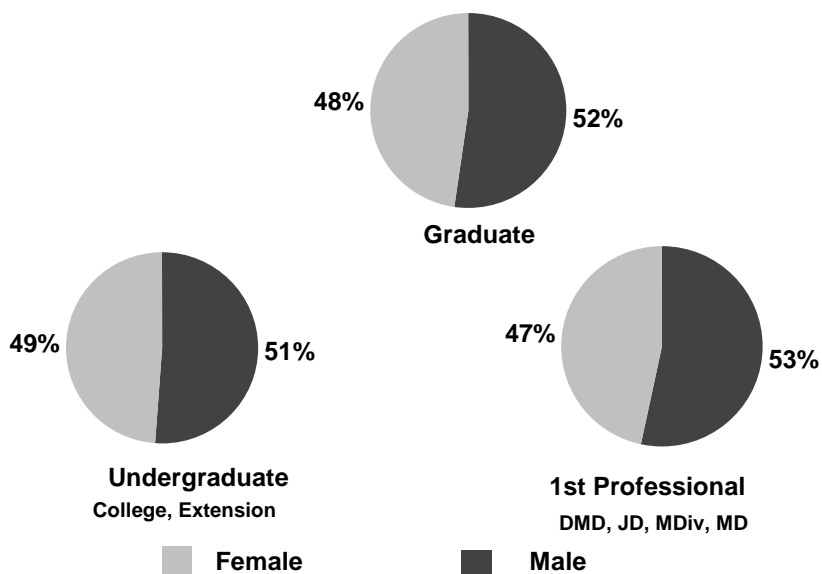
*These areas represent collaborations between two or more schools.

** Programs are located in particular Schools, but are considered University-Wide initiatives.

SOURCE: SCHOOLS

Degree Student Head Count: Fall 2004 
 Counts taken as of October 15, 2004

College ⁽¹⁾	Male	Female	Total	Full-Time	Part-Time	Total
Freshmen	818	828	1,646	1,646	-	1,646
Sophomores	883	808	1,691	1,562	-	1,562
Juniors ⁽²⁾	799	763	1,562	1,691	-	1,691
Seniors	886	777	1,663	1,663	-	1,663
Subtotal	3,386	3,176	6,562	6,562	-	6,562
GSAS ⁽³⁾	2,031	1,607	3,638	3,614	24	3,638
Business	1,197	626	1,823	1,823	-	1,823
Dental ⁽⁴⁾	105	100	205	205	-	205
Design	317	302	619	557	62	619
Divinity	204	224	428	383	45	428
Education	286	783	1,069	889	180	1,069
Government	543	413	956	921	35	956
Law	1,072	849	1,921	1,921	-	1,921
Medical	389	377	766	766	-	766
Public Health	328	497	825	596	229	825
Extension						
Undergraduate	172	213	385	160	225	385
Graduate	270	322	592	87	505	592
Subtotal, All Degree Students	10,300	9,489	19,789	18,484	1,305	19,789
Adj. for Joint Degree Students	(33)	(25)	(58)	(43)	(15)	(58)
TOTAL	10,267	9,464	19,731	18,441	1,290	19,731



(1) Students in the Advanced Standing Program are counted as Juniors in their second year and Seniors in their third and fourth years.
 (2) Counts for Juniors include 17 undergraduates unclassified by year.
 (3) Candidates for the Ph.D. are enrolled in GSAS but may cross register for courses in other faculties.
 (4) Clinical specialty students in the Dental School are not included in totals. See page 16 for Dental Clinical Specialty counts.
 SOURCE: REGISTRAR OFFICES

Historical Enrollments: Fall 1999 - 2004

Degree Student Head Count by School

	1999	2000	2001	2002	2003	2004
College	6,684	6,660	6,650	6,649	6,597	6,562
GSAS ⁽¹⁾	2,979	3,144	3,358	3,357	3,510	3,638
Business ⁽²⁾	1,485	1,458	1,847	1,836	1,832	1,823
Dental ⁽³⁾	209	214	213	207	202	205
Design	538	550	536	556	595	619
Divinity	481	480	451	443	455	428
Education	1,096	1,087	1,121	1,057	1,080	1,069
Government	770	840	881	896	924	956
Law	1,860	1,838	1,914	1,915	1,899	1,921
Medical	744	756	777	787	780	766
Public Health	760	823	808	825	737	825
Extension						
Undergraduate	403	437	435	401	403	385
Graduate	589	631	626	671	676	592
Subtotal, All Degree Students	18,598	18,918	19,617	19,600	19,690	19,789
Adj. for Joint Degree Students	(57)	(71)	(78)	(64)	(52)	(58)
TOTAL	18,541	18,847	19,539	19,536	19,638	19,731

Enrollment Level ⁽⁴⁾	1999	2000	2001	2002	2003	2004
Undergraduates						
Full-Time	6,816	6,816	6,831	6,822	6,767	6,722
Part-Time	271	281	254	228	233	225
Subtotal	7,087	7,097	7,085	7,050	7,000	6,947
Graduate Students						
Full-Time	7,842	8,116	8,865	8,818	8,993	9,082
Part-Time	991	1,004	952	992	1,004	1,059
Subtotal	8,833	9,120	9,817	9,810	9,997	10,141
1st Professional Degree ⁽⁵⁾						
Full-Time	2,657	2,677	2,690	2,722	2,668	2,680
Part-Time	21	24	25	18	25	21
Subtotal	2,678	2,701	2,715	2,740	2,693	2,701
TOTAL	18,598	18,918	19,617	19,600	19,690	19,789

(1) Candidates for the Ph.D. are enrolled in GSAS but may cross register for courses in other faculties.

(2) Between January 1997 and January 2001, the Business School instituted a second matriculation date for its MBA Program. These are not reflected in the counts above. Enrollments were 312 in January 1999, 301 in January 2000 and 341 in January 2001.

(3) These figures exclude postdoctoral students enrolled in a clinical specialty. See page 16 for Dental Clinical Specialty counts.

(4) Includes degree candidates from the Extension School. Not adjusted for joint degree students.

(5) 1st-Professional degrees include DMD, JD, MDiv, and MD.

SOURCE: REGISTRAR OFFICES

Student Enrollment by Degree: Fall 2004 ⁽¹⁾ 

		Male		Female		Total
		Full-Time	Part-Time	Full-Time	Part-Time	
College	A.B., S.B.	3,386	-	3,176	-	6,562
GSAS	A.M., S.M., Ph.D.	2,015	16	1,599	8	3,638
Business	M.B.A.	1,183	-	613	-	1,796
	D.B.A.	14	-	13	-	27
Dental	D.M.D.	65	-	73	-	138
	M.M.Sc.	25	-	12	-	37
	D.M.Sc.	15	-	15	-	30
Design	M.Arch.	135	31	126	14	306
	M.A.U.D./M.L.A.U.D.	41	-	15	1	57
	M.Des	30	1	26	-	57
	M.L.A.	26	4	65	3	98
	M.U.P.	23	1	32	1	57
	Dr.Des	21	4	17	2	44
Divinity	M.Div.	64	3	66	18	151
	M.T.S.	96	6	104	15	221
	Th.M.	2	3	1	-	6
	Th.D.	30	-	20	-	50
Education	Ed.M.	153	24	412	97	686
	Ed.D.	89	20	235	39	383
	C.A.S.	-	-	-	-	-
Government	M.P.A.	233	10	131	7	381
	M.P.A./I.D.	77	2	54	2	135
	M.P.P.	197	7	196	7	407
	M.U.P.	10	-	6	-	16
	Ph.D.	7	-	10	-	17
Law	J.D.	950	-	748	-	1,698
	LL.M.	89	-	72	-	161
	S.J.D.	33	-	29	-	62
Medical	M.D.	359	-	355	-	714
	M.M.Sc.	30	-	22	-	52
Public Health	M.P.H.	82	51	57	58	248
	M.S.	55	54	150	24	283
	D.P.H.	9	1	6	4	20
	D.S.	60	16	177	21	274
Extension	A.A., A.L.B.	73	99	87	126	385
	A.L.M., Grad. Cert.	40	230	47	275	592
TOTAL		9,717	583	8,767	722	19,789

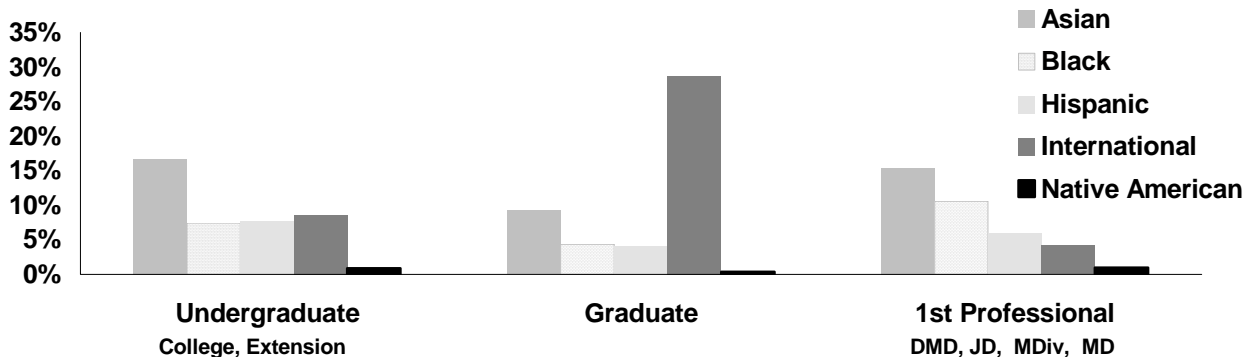
(1) Not adjusted for joint degree students.

SOURCE: REGISTRAR OFFICES

Degree Student Enrollment by Ethnicity: Fall 2004 ⁽¹⁾

	College	GSAS	Business	Dental	Design	Divinity	Education	Government	Law	Medical	Public Health	Extension	Total
Asian/Pacific Islander													
Male	519	121	108	13	36	11	21	31	93	90	36	34	1,113
Female	622	165	101	35	61	13	86	36	111	84	52	35	1,401
Subtotal	1,141	286	209	48	97	24	107	67	204	174	88	69	2,514
Percent	17%	8%	11%	23%	16%	6%	10%	7%	11%	23%	11%	7%	12.7%
Black/Non-Hispanic													
Male	205	48	60	5	5	16	27	19	68	39	10	22	524
Female	294	89	37	2	6	10	47	30	106	54	26	21	722
Subtotal	499	137	97	7	11	26	74	49	174	93	36	43	1,246
Percent	8%	4%	5%	3%	2%	6%	7%	5%	9%	12%	4%	13%	6.3%
Hispanic													
Male	255	66	27	4	12	12	18	36	50	34	12	22	548
Female	257	63	18	5	10	10	38	43	40	25	23	31	563
Subtotal	512	129	45	9	22	22	56	79	90	59	35	53	1,111
Percent	8%	4%	2%	4%	4%	5%	5%	8%	5%	8%	4%	5%	5.6%
International Students													
Male	333	604	411	29	102	22	41	227	139	25	143	54	2,130
Female	252	397	201	24	90	14	77	121	114	23	118	58	1,489
Subtotal	585	1,001	612	53	192	36	118	348	253	48	261	112	3,619
Percent	9%	28%	34%	26%	31%	8%	11%	36%	13%	6%	32%	11%	18.3%
Native American													
Male	26	5	3	-	4	-	-	2	7	7	1	4	59
Female	32	5	2	-	2	1	5	3	4	7	3	3	67
Subtotal	58	10	5	-	6	1	5	5	11	14	4	7	126
Percent	1%	0%	0%	0%	1%	0%	0%	1%	1%	2%	0%	1%	0.6%
White/Non-Hispanic													
Male	1,730	777	462	48	134	131	135	183	561	184	101	264	4,710
Female	1,425	581	233	28	107	163	391	126	367	181	207	358	4,167
Subtotal	3,155	1,358	695	76	241	294	526	309	928	365	308	622	8,877
Percent	48%	37%	38%	37%	39%	69%	49%	32%	48%	48%	37%	64%	44.9%
Unknown/Other													
Male	318	410	126	6	24	12	44	45	154	10	25	42	1,216
Female	294	307	34	6	26	13	139	54	107	3	68	29	1,080
Subtotal	612	717	160	12	50	25	183	99	261	13	93	71	2,296
Percent	9%	20%	9%	6%	8%	6%	17%	10%	14%	2%	11%	7%	11.6%
TOTAL	6,562	3,638	1,823	205	619	428	1,069	956	1,921	766	825	977	19,789

Percentage of Minority and International Students by Enrollment Level



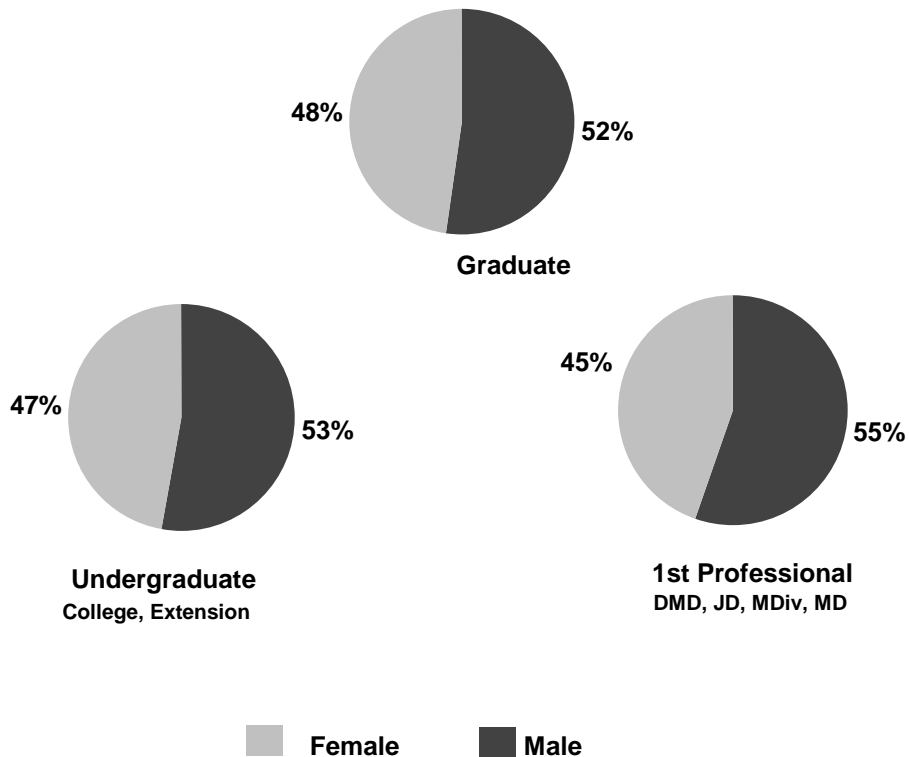
(1) Not adjusted for joint degree students.

SOURCE: REGISTRAR OFFICES

Degrees Conferred by School ⁽¹⁾

Academic Year 2003-2004

	<u>Male</u>	<u>Female</u>	<u>Total</u>
College	887	784	1,671
GSAS	487	367	854
Business	582	316	898
Dental	29	19	48
Design	136	100	236
Divinity	73	84	157
Education	175	506	681
Government	303	222	525
Law	413	303	716
Medical	103	98	201
Public Health	178	207	385
Extension			
Undergraduate	65	68	133
Graduate	152	172	324
TOTAL	3,583	3,246	6,829



(1) Not adjusted for joint degree students.
SOURCE: REGISTRAR OFFICES

Degrees Conferred by Degree: Academic Year 2003-2004 ⁽¹⁾ 

		Male	Female	Total
College	A.B.	879	779	1,658
	S.B.	8	5	13
GSAS	A.M.	179	170	349
	M.E.	-	1	1
	S.M.	49	11	60
	Ph.D.	259	185	444
Business	M.B.A.	579	315	894
	D.B.A.	3	1	4
Dental	D.M.D.	19	14	33
	M.M.Sc.	7	5	12
	D.M.Sc.	3	-	3
Design	M.Arch.	54	41	95
	M.A.U.D./M.L.A.U.D.	12	8	20
	M.Des.	42	25	67
	M.L.A.	15	14	29
	M.U.P.	8	9	17
	Dr.Des.	5	3	8
Divinity	M.Div.	21	23	44
	M.T.S.	43	59	102
	Th.M.	5	-	5
	Th.D.	4	2	6
Education	Ed.M.	158	459	617
	Ed.D.	15	45	60
	C.A.S.	2	2	4
Government	M.P.A. (1 YEAR)	141	84	225
	M.P.A. (2 YEAR)	57	32	89
	M.P.A./I.D.	29	34	63
	M.P.P.	71	67	138
	M.U.P.	5	5	10
Law	J.D.	314	237	551
	LL.M.	92	65	157
	S.J.D.	7	1	8
Medical	M.D.	90	87	177
	M.M.Sc.	13	11	24
Public Health	M.P.H.	113	96	209
	M.S.	53	84	137
	D.P.H.	-	1	1
	D.S.	12	26	38
Extension	A.A.	6	7	13
	A.L.B.	59	61	120
	A.L.M.	38	53	91
	Grad. Cert.	114	119	233
TOTAL		3,583	3,246	6,829

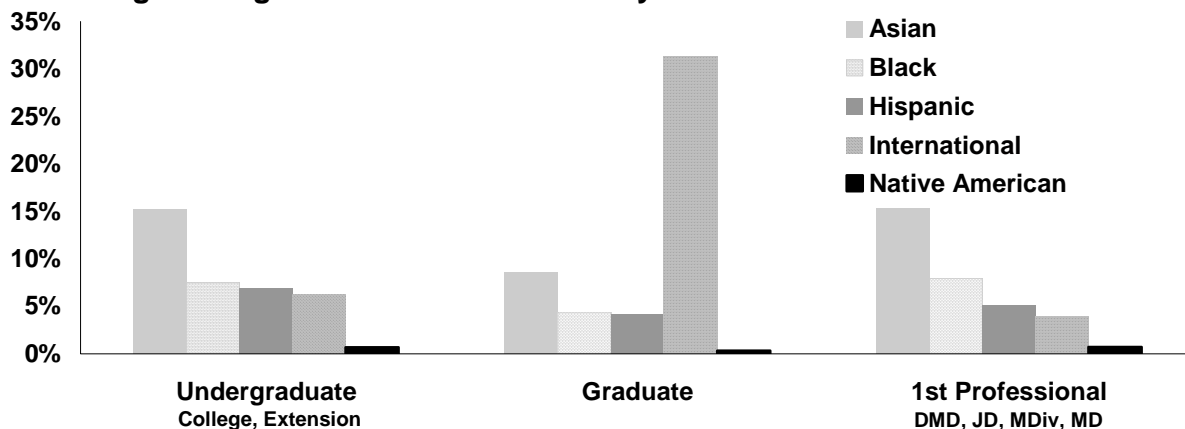
(1) Not adjusted for joint degree students.

SOURCE: REGISTRAR OFFICES

Degrees Conferred by Student Ethnicity: Academic Year 2003-2004 ⁽¹⁾

	College	GSAS	Business	Dental	Design	Divinity	Education	Government	Law	Medical	Public Health	Extension	Total
Asian/Pacific Islander													
Male	114	27	42	8	10	2	12	18	32	30	18	19	332
Female	156	40	48	6	12	3	54	14	30	28	18	21	430
Subtotal	270	67	90	14	22	5	66	32	62	58	36	40	762
Percent	16%	8%	10%	29%	9%	3%	10%	6%	9%	29%	9%	9%	11.2%
Black/Non-Hispanic													
Male	65	13	31	3	7	2	9	8	11	11	7	10	177
Female	63	9	20	-	4	5	31	19	34	5	10	8	208
Subtotal	128	22	51	3	11	7	40	27	45	16	17	18	385
Percent	8%	3%	6%	6%	5%	4%	6%	5%	6%	8%	4%	4%	5.6%
Hispanic													
Male	58	10	31	1	5	2	10	17	14	12	5	13	178
Female	57	16	13	2	7	1	28	13	7	7	7	7	165
Subtotal	115	26	44	3	12	3	38	30	21	19	12	20	343
Percent	7%	3%	5%	6%	5%	2%	6%	6%	3%	9%	3%	4%	5.0%
International Students													
Male	57	143	203	5	61	8	22	136	110	4	68	54	871
Female	52	96	91	1	46	5	38	78	71	5	60	54	597
Subtotal	109	239	294	6	107	13	60	214	181	9	128	108	1,468
Percent	7%	28%	33%	13%	45%	8%	9%	41%	25%	4%	33%	24%	21.5%
Native American													
Male	4	-	4	-	-	1	2	2	-	2	1	1	17
Female	7	1	-	-	-	-	3	-	-	3	1	2	17
Subtotal	11	1	4	-	-	1	5	2	-	5	2	3	34
Percent	1%	0%	0%	0%	0%	1%	1%	0%	0%	2%	1%	1%	0.5%
White/Non-Hispanic													
Male	411	180	205	11	47	56	81	94	185	40	54	109	1,473
Female	336	132	122	10	24	58	258	76	131	47	81	136	1,411
Subtotal	747	312	327	21	71	114	339	170	316	87	135	245	2,884
Percent	45%	37%	36%	44%	30%	73%	50%	32%	44%	43%	35%	54%	42.2%
Unknown/Other													
Male	178	114	66	1	6	2	39	28	61	4	25	11	535
Female	113	73	22	-	7	12	94	22	30	3	30	12	418
Subtotal	291	187	88	1	13	14	133	50	91	7	55	23	953
Percent	17%	22%	10%	2%	6%	9%	20%	10%	13%	3%	14%	5%	14.0%
TOTAL	1,671	854	898	48	236	157	681	525	716	201	385	457	6,829

Percentage of Degrees Conferred to Minority and International Students



(1) Not adjusted for joint degree students.
SOURCE: REGISTRAR OFFICES

Degrees Conferred: Academic Year 1999-2004 ⁽¹⁾

	Academic Year	1999	2000	2001	2002	2003	2004
College	A.B.	1,649	1,675	1,694	1,656	1,686	1,658
	S.B.	10	14	8	9	5	13
	Subtotal	1,659	1,689	1,702	1,665	1,691	1,671
GSAS	A.M.	289	286	317	325	363	349
	M.E.	-	-	1	-	1	1
	M.F.S.	-	-	1	3	-	-
	S.M.	32	37	44	65	58	60
	Ph.D.	438	412	387	383	392	444
	Subtotal	759	735	750	776	814	854
Business	M.B.A.	897	876	848	916	887	894
	D.B.A.	12	4	5	4	3	4
	Subtotal	909	880	853	920	890	898
Dental	D.M.D.	31	28	32	32	36	33
	M.M.S.	10	12	15	14	15	12
	M.P.H.	-	-	2	-	-	-
	D.M.S.	12	5	8	10	3	3
	Subtotal	53	45	57	56	54	48
Design	M. Arch.	92	89	96	98	91	95
	M.A.U.D./M.L.A.U.D.	26	22	25	24	25	20
	M.Des.	34	39	45	51	51	67
	M.L.A.	44	28	34	24	27	29
	M.U.P.	13	14	18	14	15	17
	Dr.Des.	3	7	9	11	8	8
Subtotal	212	199	227	222	217	236	
Divinity	M.Div.	54	53	63	38	50	44
	M.T.S.	116	103	95	102	83	102
	Th.M.	7	7	7	4	7	5
	Th.D.	3	4	6	8	3	6
Subtotal	180	167	171	152	143	157	
Education	Ed.M.	609	540	603	603	589	617
	Ed.D.	62	58	47	78	59	60
	C.A.S.	13	12	6	3	4	4
	Subtotal	684	610	656	684	652	681
Government	M.P.A. (1 Year)	194	202	191	202	209	225
	M.P.A. (2 Year)	59	94	72	84	86	89
	M.P.A./I.D.	-	-	49	56	77	63
	M.P.P.	207	143	150	158	163	138
	M.C.R.P./M.U.P.	3	6	4	5	7	10
	D.P.A.	-	-	1	-	-	-
Subtotal	463	445	467	505	542	525	
Law	J.D.	563	557	543	554	575	551
	LL.M.	158	134	130	144	130	157
	S.J.D.	6	13	10	7	14	8
	Subtotal	727	704	683	705	719	716
Medicine	M.D.	178	162	162	157	165	177
	M.M.Sc.	20	19	11	13	24	24
	Subtotal	198	181	173	170	189	201
Public Health	M.P.H.	165	167	205	214	211	209
	M.S., M.O.H.	146	133	147	134	152	137
	D.P.H., D.S.	66	52	39	42	65	39
	Subtotal	377	352	391	390	428	385
Extension	A.A.	19	12	10	16	20	13
	A.L.B.	117	135	126	134	113	120
	A.L.M.	91	77	88	84	82	91
	Grad. Cert.	294	301	341	312	245	233
	Subtotal	521	525	565	546	460	457
	TOTAL	6,742	6,532	6,695	6,791	6,799	6,829

(1) Not adjusted for joint degree students.

SOURCE: REGISTRAR OFFICES

International Enrollment: Fall 2004 ⁽¹⁾

	Africa	Asia	Europe	Latin America	Middle East	North America	Oceania	Total
College	36	131	172	19	27	146	14	545
GSAS	16	481	366	59	76	132	30	1,160
Business	20	169	201	65	30	73	18	576
Dental	1	14	5	2	8	8	-	38
Design	1	99	38	10	13	20	2	183
Divinity	2	20	10	-	2	5	-	39
Education	2	46	10	19	3	25	1	106
Government	19	115	97	47	21	42	6	347
Law	21	69	76	22	26	41	8	263
Medical	4	5	5	3	2	12	-	31
Public Health	24	107	28	8	8	29	3	207
Extension	2	11	10	15	5	8	-	51
TOTAL	148	1,267	1,018	269	221	541	82	3,546

(1) Counts include full-time degree and non-degree students only, which include transfer and special students, visiting undergraduate and Extension School enrollees. Counts exclude executive education and professional development programs.
SOURCE: INTERNATIONAL OFFICE

Historical Enrollment of International Students: Fall 1999 - 2004 ⁽¹⁾

	Fall					
	1999	2000	2001	2002	2003	2004
Africa						
Ghana	8	13	16	15	19	17
Kenya	12	16	17	14	22	23
Nigeria	18	21	34	22	24	20
South Africa	23	28	26	30	23	23
Zimbabwe	9	8	12	18	18	13
Other	32	45	59	49	48	52
Subtotal	102	131	164	148	154	148
Asia						
China	227	270	318	337	354	361
India	96	104	120	112	133	167
Japan	151	158	163	134	127	137
South Korea	183	213	212	207	191	218
Taiwan	97	102	81	86	82	103
Other	274	270	286	285	279	281
Subtotal	1,028	1,117	1,180	1,161	1,166	1,267
Europe						
France	71	74	67	83	78	68
Germany	123	120	119	124	132	137
Greece	45	45	42	43	38	52
Spain	60	62	67	55	53	51
United Kingdom	133	158	157	174	180	191
Other	468	482	487	492	515	519
Subtotal	900	941	939	971	996	1,018
Latin America						
Argentina	62	57	61	60	55	48
Brazil	67	61	65	68	63	63
Chile	25	33	24	26	26	33
Colombia	47	48	40	50	31	43
Peru	17	24	27	18	20	22
Other	106	97	92	86	65	60
Subtotal	324	320	309	308	260	269
Middle East						
Cyprus	14	12	7	6	11	15
Israel	63	72	71	75	71	76
Lebanon	8	9	16	8	12	15
Saudi Arabia	14	11	9	9	9	10
Turkey	66	75	64	79	71	74
Other	25	32	38	31	39	31
Subtotal	190	211	205	208	213	221
North America						
Canada	419	434	464	492	444	467
Mexico	83	101	95	85	71	74
Subtotal	502	535	559	577	515	541
Oceania						
Australia	53	61	73	66	70	67
New Zealand	19	22	21	19	21	15
Subtotal	72	83	94	85	91	82
Stateless	-	-	-	2	-	-
TOTAL	3,118	3,338	3,450	3,460	3,395	3,546

Africa Other: Burkina Faso, Cameroon, Congo, Cote D'Ivoire, Egypt, Ethiopia, Gambia, Lesotho, Mauritius, Morocco, Mozambique, Rwanda, Senegal, Sudan, Tanzania, Uganda, Zambia.

Asia Other: Afghanistan, Bangladesh, Bhutan, Burma (Myanmar), Hong Kong, Indonesia, Kazakhstan, Kyrgyzstan, Malaysia, Nepal, Pakistan, Philippines, Singapore, Sri Lanka, Thailand, Uzbekistan, Vietnam.

Europe Other: Armenia, Austria, Azerbaijan, Belarus, Belgium, Bosnia and Herzegovina, Bulgaria, Croatia, Czech Republic, Denmark, Estonia, Finland, Georgia, Hungary, Ireland, Italy, Latvia, Liechtenstein, Lithuania, Luxembourg, Macedonia, Moldova, Monaco, Netherlands, Norway, Poland, Portugal, Romania, Russia, Slovakia, Slovenia, Sweden, Switzerland, Ukraine, Yugoslavia (Former).

Latin America Other: Bahamas, Barbados, Bermuda, Bolivia, Costa Rica, Dominica, El Salvador, Guatemala, Honduras, Jamaica, Nicaragua, Panama, Trinidad and Tobago, Uruguay, Venezuela.

Middle East Other: Bahrain, Iran, Iraq, Jordan, Kuwait, Qatar, Syria, United Arab Emirates, West Bank.

(1) Counts include full-time degree and non-degree students only, which includes transfer and special students, visiting undergraduates, and Extension School enrollees. Counts exclude executive education and professional development programs. Countries listed above are for Fall 2004. Information on countries for enrollments in prior years can be obtained from the International Office.
SOURCE: INTERNATIONAL OFFICE

Summer School Enrollment: Summer 1999 - 2004

Harvard Students by School ⁽¹⁾

	1999	2000	2001	2002	2003	2004
College	303	313	330	322	348	334
GSAS	43	55	62	61	56	55
Education	8	14	12	5	8	10
Extension	317	296	291	298	307	365
Other Harvard Schools	12	19	22	17	10	21
Subtotal	683	697	717	703	729	785

Other Students by Educational Level ⁽²⁾

Secondary School	1,217	1,244	1,190	1,320	1,130	1,020
Graduate	1,623	1,667	1,642	1,522	1,748	1,593
Undergraduate	1,047	1,101	1,067	1,050	965	1,122
Unknown	343	335	279	299	72	89
Subtotal	4,230	4,347	4,178	4,191	3,915	3,824
TOTAL	4,913	5,044	4,895	4,894	4,644	4,609

Non-Degree Headcount: Fall 1999 - 2004 ⁽³⁾

	1999	2000	2001	2002	2003	2004		
						Male	Female	Total
GSAS	214	215	144	204	197	88	100	188
Dental ⁽⁴⁾	40	53	31	40	45	17	21	38
Design	-	1	12	3	3	2		2
Divinity	32	30	45	18	11	10	6	16
Education	70	71	84	103	84	20	75	95
Government	9	15	13	8	9	6	4	10
Law	64	43	38	47	54	18	22	40
Public Health	1	-	3	1	-			-
Extension ⁽⁵⁾	5,186	4,933	4,483	4,945	4,758	2,087	2,383	4,470
TOTAL	5,616	5,361	4,853	5,369	5,161	2,248	2,611	4,859

(1) Counts include matriculating Harvard students enrolled in Harvard courses during the summer session.

(2) Beginning with 2004, high school students are counted as undergraduates instead of Secondary School students.

(3) Non-degree enrollments include all students enrolled on October 15 in at least one class that is creditable toward a degree or formal award.

(4) Includes post-doctorate in clinical specialty certification programs.

(5) Counts are for the first semester only. This significantly undercounts yearly enrollment in the Extension School as a roughly equal number of new students might be enrolled in the second semester.

SOURCE: HARVARD UNIVERSITY EXTENSION SCHOOL AND REGISTRAR OFFICES

Fellowship Programs: Academic Year 2004 - 2005



Fellows	Male	Female	Total
Allied Institutions			
Arnold Arboretum	6	5	11
Center for Hellenic Studies	9	14	23
Dumbarton Oaks	18	16	34
Nieman Fellows	12	14	26
Ethics and the Professions	4	7	11
South African Fellows	6	2	8
Villa I Tatti	7	8	15
FAS			
WCFA Fellows	49	13	62
Visiting Fellows	48	45	93
Rowland Institute	7	1	8
Bauer Center for Genomic Research	7	3	10
Warren Fellows ⁽¹⁾	3	6	9
W.E.B. DuBois Institute Fellows	6	6	12
Design			
Loeb Fellows	6	5	11
Divinity			
Ctr. for the Study of World Religions ⁽²⁾	3	1	4
Merrill Fellows	7	3	10
Ministers in Vicinity	3	-	3
Resident Fellows	1	-	1
Government			
Institute of Politics Fellows	4	3	7
Mason Fellows	36	20	56
National Security Fellows	19	2	21
Senior Executive Fellows	153	49	202
Law			
Olin Fellows	n/a	n/a	23
The Graduate Program	11	5	16
Public Health			
Ethical Issues in Int'l Health Research	6	7	13
Post Doctorate Fellows	98	95	193
Takemi Program	8	3	11
Bell Fellows	-	4	6
Fogarty Fellows	5	3	8
Harkness Fellow in Health Care Policy	-	1	1
Yerby Fellowship Program	1	4	5
Kellogg Scholars in Health Disparities	-	2	2
Radcliffe Institute for Advanced Study			
RIAS Fellows	12	36	48
Subtotal	-	-	963
Medical and Dental School			
Research and Clinical Fellows ⁽³⁾			
	Male	Female	Total
Medical School - Quad	436	267	703
Medical School - Hospital	3,839	2,757	6,596
Dental School - Quad	19	13	32
Dental School - Hospital	24	12	36
Subtotal	4,318	3,049	7,367
TOTAL FELLOWS	-	-	8,330

(1) The Weatherhead Center for International Affairs includes Harvard Academy for International and Area Studies, Olin Institute for Strategic Studies, the Program on U.S. Japan Studies, the Fellows Program, and the Project on Justice, Welfare and Economics.

(2) Center for the Study of World Religions is no longer awarding Fellowships as of 2004-05.

(3) Includes post-doctoral fellows, interns and residents.

SOURCE: INTERNAL SURVEY

University Faculty: Fall 2004 ⁽¹⁾

	Head Count			Full-time Equivalent
	Male	Female	Total	
Arts and Sciences				
Tenured	370	84	454	450.9
Associate Professor	48	14	62	62.0
Assistant Professor	87	54	141	139.4
Other Teaching Faculty	218	188	406	289.1
TOTAL	723	340	1,063	941.4

	Head Count			Full-time Equivalent
	Male	Female	Total	
Design				
Tenured	22	3	25	21.9
Associate Professor	11	6	17	14.2
Assistant Professor	4	1	5	5.0
Other Teaching Faculty	43	19	62	23.7
TOTAL	80	29	109	64.8

	Head Count			Full-time Equivalent
	Male	Female	Total	
Education				
Tenured	13	9	22	21.1
Associate Professor	3	3	6	5.5
Assistant Professor	1	7	8	8.0
Other Teaching Faculty	14	14	28	24.3
TOTAL	31	33	64	58.9

	Head Count			Full-time Equivalent
	Male	Female	Total	
Law				
Tenured	61	12	73	69.8
Associate Professor	n/a	n/a	n/a	n/a
Assistant Professor	6	1	7	7.0
Other Teaching Faculty	73	34	107	46.4
TOTAL	140	47	187	123.2

	Head Count			Full-time Equivalent
	Male	Female	Total	
Medical Quad-Based				
Tenured	77	14	91	89.9
Associate Professor ⁽²⁾	17	10	27	27.0
Assistant Professor ⁽²⁾	26	13	39	38.6
Other Teaching Faculty	93	68	161	158.8
TOTAL	213	105	318	314.3

	Head Count			Full-time Equivalent
	Male	Female	Total	
University ⁽³⁾				
Tenured	1	1	2	2.5
Other Teaching Faculty	8	1	9	5.8
TOTAL	9	2	11	8.3

	Head Count			Full-time Equivalent
	Male	Female	Total	
Business				
Tenured	76	14	90	89.6
Associate Professor	25	6	31	31.0
Assistant Professor	35	19	54	54.0
Other Teaching Faculty	29	8	37	33.8
TOTAL	165	47	212	208.4

	Head Count			Full-time Equivalent
	Male	Female	Total	
Divinity				
Tenured	10	6	16	14.6
Associate Professor	3	2	5	4.5
Assistant Professor	2	1	3	2.5
Other Teaching Faculty	16	22	38	20.7
TOTAL	31	31	62	42.3

	Head Count			Full-time Equivalent
	Male	Female	Total	
Government				
Tenured	33	5	38	36.1
Associate Professor	15	7	22	22.0
Assistant Professor	7	4	11	11.0
Other Teaching Faculty	35	17	52	43.6
TOTAL	90	33	123	112.7

	Head Count			Full-time Equivalent
	Male	Female	Total	
Public Health				
Tenured	46	10	56	55.6
Associate Professor	20	13	33	33.3
Assistant Professor	31	16	47	44.9
Other Teaching Faculty	57	31	88	71.1
TOTAL	154	70	224	204.9

	Head Count			Full-time Equivalent
	Male	Female	Total	
Dental				
Tenured	5	-	5	4.3
Associate Professor ⁽²⁾	4	4	8	8.0
Assistant Professor ⁽²⁾	6	4	10	10.0
Other Teaching Faculty	20	17	37	35.3
TOTAL	35	25	60	57.6

University Faculty				
	Male	Female	Total	Full-time Equivalent
Tenured	714	158	872	856.2
Associate Professor	146	65	211	207.5
Assistant Professor	205	120	325	320.4
Other Teaching Faculty	606	419	1,025	752.6
TOTAL	1,671	762	2,433	2,136.8

(1) Counts include all faculty currently appointed. Other Teaching Faculty includes non-tenured Professors; non-tenured Professors of Practice; Director of Studies; Librarian III-Dumbarton Oaks; Preceptor, Senior; Lecturer; Preceptor; Professor, Adjunct; Professor, Assistant Adjunct; Professor, Associate Adjunct; Professor, Assistant Clinical; Professor, Associate Clinical; Visiting Faculty and Visiting Scientist.

University Professors are special endowed positions and are the University's highest professorial distinction. These Professors were originally appointed to the following faculties: Arts and Sciences, twelve; Business, two; Government, one; and Law, two. They are included in the individual School counts.

(2) Medical and Dental Associate Professors and Assistant Professor counts include Associate Clinical Professors and Assistant Clinical Professors.

(3) University total includes faculty based in other academic units.

NOTE: In the Fall of 2002, the University implemented a new Human Resource system. The new system allows for additional classification such as breaking out tenured vs. non-tenured professors. Therefore, certain line items are not always comparable to prior years.

SOURCE: INTERNAL SURVEY OF EACH FACULTY

Faculty of Medicine Quad and Hospital-Based Personnel: Fall 2004 ⁽¹⁾

Medical Quad-based and Dental on-payroll counts are also included on the University Faculty counts exhibit.

	Head Count			Full-time
	Male	Female	Total	Equivalent
Medical				
Quad-based				
Tenured	77	14	91	89.9
Associate Professor	17	10	27	27.0
Assistant Professor	26	13	39	38.6
Other Teaching Faculty ⁽²⁾	93	68	161	158.8
TOTAL	213	105	318	314.3

Hospital-Based on Payroll

Professor	131	11	142	135.3
Associate Professor	30	7	37	33.4
Assistant Professor	19	12	31	28.0
Other Faculty ⁽³⁾	37	33	70	63.7
TOTAL	217	63	280	260.4

Clinical Unpaid Appointments

Professor	417	63	480	
Associate Professor	847	215	1,062	
Assistant Professor	1,109	533	1,642	
Other Faculty ⁽³⁾	3,295	2,655	5,950	
TOTAL	5,668	3,466	9,134	

Dental

On-Payroll

	Head Count			Full-time
	Male	Female	Total	Equivalent
Tenured	5	-	5	4.3
Associate Professor	4	4	8	8.0
Assistant Professor	6	4	10	10.0
Other Teaching Faculty ⁽²⁾	20	17	37	35.3
TOTAL	35	25	60	57.6

Clinical Unpaid Appointments

Professor	4	1	5	
Associate Professor	11	3	14	
Assistant Professor	19	4	23	
Other Faculty ⁽³⁾	172	60	232	
TOTAL	206	68	274	

(1) The Faculties of the Medical and Dental Schools are made up of both quad and hospital-based personnel. Quad-based faculty are located in Medical and Dental School facilities and are primarily research oriented. Hospital-based faculty are located in affiliated hospitals and work in both research and clinical settings. Medical School faculty supervise degree students, post-doctoral residents, fellows and interns. FTE's are not available for the Clinical unpaid appointments in the Faculty of Medicine.

(2) Other Teaching Faculty includes non-tenured Professors; Instructor; Instructor, Clinical; Lecturer, Annual; Lecturer, Senior; Professor, Visiting; Professor, Visiting Associate and Research Associate.

(3) Other Faculty includes Administrative Officer (Faculty); Assistant, Clinical; Associate, Academic; Associate, Senior, Consultant; Fellow; House Master; Instructor; Instructor, Clinical; Lecturer, Annual; Lecturer, Senior; Lecturer, Visiting; Professor, Visiting; Professor, Visiting Assistant; Professor, Visiting Associate; Research Associate; Research Fellow, Senior; Scientist, Visiting; Teaching Associate and Visiting Other Faculty.

NOTE: In the Fall of 2002, the University implemented a new Human Resource system. The new system allows for additional classification such as breaking out tenured vs. non-tenured professors. Therefore, certain line items are not always comparable to prior years.

SOURCE: INTERNAL SURVEY OF EACH FACULTY

Non-Faculty Staff in the Schools ⁽¹⁾

Counts are Full-Time Equivalent Figures as of October 31, 2004

University-Wide Totals	University Funding			Sponsored Funding			University Sponsored Funding		Grand Total	
	Administrative & Professional	Clerical & Technical	Service & Trades	Administrative & Professional	Clerical & Technical	Subtotal	Non-Faculty Academic Staff ⁽²⁾	Subtotal		
Faculties	3,258.8	2,862.3	70.5	600.9	630.1	7,422.6	329.4	742.1	1,071.5	8,494.1
Allieds	259.1	159.4	56.6	1.5	2.0	478.6	22.7	1.0	23.7	502.3
Central Administration ⁽³⁾	538.1	340.2	54.0	5.5	3.3	941.0	-	-	-	941.0
Service Departments ⁽³⁾	686.2	399.6	858.0	-	-	1,943.8	9.3	-	9.3	1,953.1
Non-Departmental & Special ⁽⁴⁾	47.3	55.2	-	-	-	102.5	-	-	-	102.5
TOTAL	4,789.5	3,816.8	1,039.1	607.9	635.3	10,888.5	361.4	743.1	1,104.5	11,993.0

Faculties	University Funding			Sponsored Funding			University Sponsored Funding		Grand Total	
	Administrative & Professional	Clerical & Technical	Service & Trades	Administrative & Professional	Clerical & Technical	Subtotal	Non-Faculty Academic Staff ⁽²⁾	Subtotal		
Faculty of Arts and Sciences	591.8	606.7	1.0	115.1	94.6	1,409.2	183.0	215.9	398.9	1,808.1
Athletics	106.7	25.0	-	-	-	131.6	12.0	-	12.0	143.6
College Library	243.2	287.7	-	-	-	530.9	-	-	-	530.9
DEAS ⁽⁵⁾	51.5	56.3	9.5	45.8	4.9	168.0	15.7	54.0	69.7	237.7
Division of Continuing Education	72.3	56.4	-	-	-	128.7	-	-	-	128.7
GSAS	23.5	17.9	-	-	-	41.4	-	-	-	41.4
College Life and Student Dorms	109.6	68.2	-	-	-	177.7	0.2	-	0.2	177.9
Museums ⁽⁶⁾	72.7	73.2	-	1.6	8.3	155.7	4.3	7.7	12.0	167.7
Yenching	6.2	2.0	-	1.0	-	9.2	-	-	-	9.2
Subtotal	1,277.4	1,193.2	10.5	163.5	107.8	2,752.3	215.2	277.6	492.9	3,245.2
Business	425.8	280.7	-	-	-	706.6	1.0	-	1.0	707.6
Publishing Division	226.4	16.9	-	-	-	243.3	-	-	-	243.3
Subtotal	652.2	297.6	-	-	-	949.8	1.0	-	1.0	950.8
Dental	28.5	69.1	-	0.8	2.0	100.4	5.2	4.0	9.2	109.6
Design	50.9	51.3	-	-	-	102.2	1.2	0.5	1.7	103.9
Divinity	54.2	45.3	-	-	-	99.5	-	-	-	99.5
Education	113.1	102.4	-	30.3	17.2	263.0	3.0	1.4	4.4	267.4
Government	218.9	176.4	-	22.0	13.5	430.8	17.2	9.4	26.6	457.3
Law	216.1	195.7	-	10.2	5.8	427.8	7.8	2.0	9.8	437.5
Medical	443.7	512.7	60.0	119.5	268.5	1,404.4	60.6	354.0	414.6	1,819.0
Public Health	158.1	182.7	-	254.6	210.3	805.6	18.3	93.2	111.5	917.1
Radcliffe Institute for Advanced Study	45.7	36.0	-	-	5.1	86.8	-	-	-	86.8
Subtotal Faculties	3,258.8	2,862.3	70.5	600.9	630.1	7,422.6	329.4	742.1	1,071.5	8,494.1

(1) Figures do not include temporary employees (except limited regular guards and custodians), LHT's (less-than-half-time), students or teaching fellows. Counts include only filled positions.

(2) Counts include Academic Clinical Fellow, Coaching Assistants, Internal Post Docs, Museum Interns, Teaching Assistants and Visiting Fellows.

(3) Core departments provide central functions of the University (accounts payable, HR benefits etc.) and are supported through funds from the President, Faculties, and departments. Service departments derive their revenue on a fee-for-service basis from internal customers.

(4) Signet Society, Credit Union, Harvard Student Agencies, LASPAU and some interdepartmental personnel.

(5) DEAS refers to Division of Engineering and Applied Sciences.

(6) Museums include Museum of Comparative Zoology, Peabody Museum and Semitic Museum.

NOTE: In the Fall of 2002, the University implemented a new Human Resource system. Therefore certain line items are not always comparable to data presented prior to Fall 2002.

SOURCE: HUMAN RESOURCE PERSONNEL/PAYROLL DATABASE

Non-Faculty Staff in the Allied Institutions, Central Administration and Service Departments ⁽¹⁾

Counts are Full-Time Equivalent Figures as of October 31, 2004

	University Funding			Sponsored Funding			University Funding	Sponsored Funding	Grand Total	
	Administrative & Professional ⁽²⁾	Clerical & Technical	Service & Trades	Administrative & Professional ⁽²⁾	Clerical & Technical	Subtotal	Non-Faculty Academic Staff ⁽³⁾	Subtotal		
Allied Institutions										
American Repertory Theatre	38.5	18.9	-	-	-	57.4	1.2	-	1.2	58.6
Arnold Arboretum	30.9	19.5	18.0	0.5	2.0	70.9	7.0	1.0	8.0	78.9
Art Museums	79.7	53.9	38.6	1.0	-	173.1	8.0	-	8.0	181.1
Harvard Magazine	14.9	2.5	-	-	-	17.4	-	-	-	17.4
Inter-Faculty Initiatives	7.7	7.9	-	-	-	15.6	1.0	-	1.0	16.6
Institute of Politics	6.0	9.1	-	-	-	15.1	5.5	-	5.5	20.6
Joint Center for Housing Studies	4.6	9.6	-	-	-	14.2	-	-	-	14.2
Memorial Church	8.0	7.1	-	-	-	15.1	-	-	-	15.1
Nieman Foundation	8.9	7.0	-	-	-	15.9	-	-	-	15.9
University Press	54.2	23.8	-	-	-	78.0	-	-	-	78.0
Villa I Tatti ⁽⁴⁾	5.8	-	-	-	-	5.8	-	-	-	5.8
Subtotal	259.1	159.4	56.6	1.5	2.0	478.6	22.7	1.0	23.7	502.3
Central Administration - Core and Service Departments ⁽⁵⁾										
<i>Core departments in bold, service departments in italics</i>										
President & Provost, University Marshal and Office of the Governing Boards	41.6	32.3	1.0	1.0	-	75.9	-	-	-	75.9
<i>University Information Services ⁽⁶⁾</i>	213.8	104.5	12.0	-	-	330.3	-	-	-	330.3
<i>University Health Services</i>	131.0	127.4	-	-	-	258.4	9.3	-	9.3	267.7
VP Administration	29.1	8.5	-	-	-	37.6	-	-	-	37.6
<i>Harvard Real Estate Services</i>	74.2	65.0	-	-	-	139.2	-	-	-	139.2
<i>Dining Services</i>	74.6	20.0	369.9	-	-	464.5	-	-	-	464.5
<i>Faculty Club</i>	14.0	5.4	34.4	-	-	53.8	-	-	-	53.8
<i>University Operations Services</i>	116.3	49.6	441.2	-	-	607.0	-	-	-	607.0
VP Development & Alumni Affairs	95.9	58.5	-	-	-	154.4	-	-	-	154.4
<i>Fund Raising Campaigns</i>	62.3	27.7	-	-	-	90.0	-	-	-	90.0
VP Finance	149.1	120.6	-	-	-	269.7	-	-	-	269.7
VP General Counsel	50.1	26.4	53.0	-	-	129.5	-	-	-	129.5
<i>Security</i>	-	-	0.6	-	-	0.6	-	-	-	0.6
VP Government, Community and Public Affairs	25.1	19.9	-	-	-	45.0	-	-	-	45.0
VP Human Resources	84.4	41.1	-	-	-	125.5	-	-	-	125.5
University Library	62.9	33.0	-	4.5	3.3	103.6	-	-	-	103.6
Subtotal	1,224.2	739.8	912.0	5.5	3.3	2,884.8	9.3	-	9.3	2,894.1
Non-Departmental & Special ⁽⁷⁾	47.3	55.2	-	-	-	102.5	-	-	-	102.5

(1) Figures do not include temporary employees (except limited regular guards and custodians), LHT's (less-than-half-time), students or teaching fellows. Counts include only filled positions.

(2) Counts include all non-academic Administrative and Professional staff.

(3) Counts include Academic Clinical Fellow, Coaching Assistants, Internal Post Docs, Museum Interns, Teaching Assistants and Visiting Fellows.

(4) Additional personnel on local data systems are not included in this count.

(5) Core departments provide central functions of the University (accounts payable, HR benefits etc.) and are supported through funds from the President, Faculties, and departments. Service departments derive their revenue on a fee-for-service basis from internal customers.

(6) University Information Services includes Harvard Printing and Publishing Services.

(7) Non-Departmental and Special include Signet Society, Credit Union, Harvard Student Agencies, LASPAU and some interdepartmental personnel.

NOTE: In the Fall of 2002, the University implemented a new Human Resource system. Therefore certain line items are not always comparable to data presented prior to Fall 2002.

SOURCE: HUMAN RESOURCE PERSONNEL/PAYROLL DATABASE

Tuition Charges: FY1985 - FY2005 ⁽¹⁾

Fiscal Year	College	GSAS	Business	Design	Divinity	Education	Government ⁽²⁾	Law	Medical/Dental ⁽³⁾	Public Health
1985	\$9,500	\$9,500	\$10,000	\$9,500	\$6,200	\$8,928	\$9,200	\$8,800	\$12,100	\$8,300
1986	10,266	10,266	10,750	10,165	6,640	9,552	9,840	9,650	13,100	8,826
1987	11,040	11,040	11,900	10,850	7,100	10,176	10,440	10,700	14,000	9,600
1988	11,645	11,645	13,300	11,500	7,600	10,752	11,075	11,400	14,850	10,575
1989	12,310	12,310	14,250	12,250	8,100	11,440	11,800	12,307	15,750	11,470
1990	13,085	13,085	15,350	13,110	8,630	12,232	12,570	13,400	16,850	12,515
1991	13,960	13,960	16,400	14,300	9,200	13,152	13,390	14,475	18,030	13,570
1992	14,860	14,860	17,500	15,450	9,940	14,192	14,662	15,560	19,110	14,790
1993	15,870	15,870	18,550	16,650	10,540	15,044	15,690	16,730	20,257	15,675
1994	16,856	16,856	19,750	17,483	11,070	15,796	16,631	17,750	21,260	16,775
1995	17,851	17,851	21,000	18,360	11,630	16,664	17,710	19,080	22,300	17,770
1996	18,838	18,838	22,700	19,276	12,220	17,581	18,650	20,500	23,192	18,840
1997	19,770	19,770	23,840	20,240	12,830	18,460	19,770	21,700	24,150	19,800
1998	20,600	20,600	25,000	21,252	13,480	19,476	20,720	22,800	25,200	20,890
1999	21,342	21,342	26,260	22,208	14,160	20,430	21,656	23,900	26,000	21,895
2000	22,054	22,054	27,250	23,163	14,870	21,410	22,520	25,000	27,000	22,950
2001	22,694	22,694	28,500	24,159	15,620	22,600	23,400	26,000	28,000	23,980
2002	23,457	23,370	30,050	25,195	16,400	23,720	24,320	27,500	29,000	25,050
2003	24,630	24,630	31,800	26,330	17,220	25,144	26,488	29,500	30,500	26,300
2004	26,066	26,066	33,650	27,910	18,080	26,628	28,580	31,250	32,000	27,670
2005	\$27,448	\$27,448	\$35,600	\$29,500	\$18,984	\$28,092	\$30,272	\$33,120	\$34,250	\$29,300

Average Annual Growth Rates

	College	GSAS	Business	Design	Divinity	Education	Government	Law	Medical/Dental	Public Health
20 YEAR	5.4%	5.4%	6.6%	5.8%	5.8%	5.9%	6.1%	6.9%	5.3%	6.5%
10 YEAR	4.4%	4.4%	5.4%	4.9%	5.0%	5.4%	5.5%	5.7%	4.4%	5.1%
5 YEAR	4.5%	4.5%	5.5%	5.0%	5.0%	5.6%	6.1%	5.8%	4.9%	5.0%
1 YEAR	5.3%	5.3%	5.8%	5.7%	5.0%	5.5%	5.9%	6.0%	7.0%	5.9%

(1) All amounts exclude the University Health Service fee.

(2) As of FY03, the School of Government implemented two tuition rate increases, one for 1st year students (shown above) and one for returning students (FY03 is \$25,440 and FY04 is \$27,704).

(3) FY99 Dental School tuition is \$26,050.

SOURCE: ANNUAL TUITION PROPOSALS APPROVED BY THE CORPORATION.

Comparative Undergraduate Tuition and Fees ⁽¹⁾

Ranked in descending order for FY2005

Institution	Actual		Change FY2004 - 2005		Notes	
	FY2004	FY2005	Percent	Nominal	FY2004	FY2005
Columbia Total	\$38,590	\$40,538	5.0%	\$1,948		
Tuition	29,262	30,876	5.5%	1,614		
Mandatory Fees	526	596	13.3%	70	Student Life Fee: \$526	Student Life Fee: \$596
Room & Board	8,802	9,066	3.0%	264		
Chicago Total	\$38,403	\$40,353	5.1%	\$1,950		
Tuition	28,689	30,561	6.5%	1,872		
Mandatory Fees	153	168	9.8%	15	Activity Fee: \$153	Activity Fee: \$168
Room & Board	9,165	9,624	5.0%	459		
Cornell Total	\$38,334	\$40,100	4.6%	\$1,766		
Tuition	28,630	30,000	4.8%	1,370		
Mandatory Fees	124	167	34.7%	43	Activity Fee: \$124	Activity Fee: \$167
Room & Board	9,580	9,933	3.7%	353		
MIT Total	\$38,310	\$39,900	4.2%	\$1,590		
Tuition	29,400	30,600	4.1%	1,200		
Mandatory Fees	200	200	0.0%	0	Activity Fee: \$200	Activity Fee: \$200
Room & Board	8,710	9,100	4.5%	390		
Harvard Total	\$37,928	\$39,880	5.1%	\$1,952		
Tuition	27,208	28,712	5.5%	1,504	Student Services	Student Services
Mandatory Fees	1,852	1,908	3.0%	56	Fee: \$1,852	Fee: \$1908
Room & Board	8,868	9,260	4.4%	392		
UPenn Total	\$38,132	\$39,818	4.4%	\$1,686		
Tuition	26,454	27,728	4.8%	1,274	General Fee: \$2,328	General Fee: \$2,440
Mandatory Fees	3,036	3,172	4.5%	136	Tech Fee: \$502	Tech Fee: \$518
Room & Board	8,642	8,918	3.2%	276	Rec Fee: \$206	Rec Fee: \$214
Brown Total	\$37,942	\$39,808	4.9%	\$1,866		
Tuition	29,710	31,198	5.0%	1,488		
Mandatory Fees	136	136	0.0%	0	Activity Fee: \$136	Activity Fee: \$136
Room & Board	8,096	8,474	4.7%	378		
Stanford Total	\$37,905	\$39,603	4.5%	\$1,698		
Tuition	28,563	29,847	4.5%	1,284	Associated Students	Associated Students
Mandatory Fees	269	256	-4.8%	(13)	of Stanford Univ. \$269	of Stanford Univ. \$256
Room & Board	9,073	9,500	4.7%	427		
Dartmouth Total	\$37,770	\$39,465	4.5%	\$1,695		
Tuition	28,965	30,279	4.5%	1,314		
Mandatory Fees	180	186	3.3%	6	Activity Fee: \$180	Activity Fee: \$186
Room & Board	8,625	9,000	4.3%	375		
Princeton Total ⁽²⁾	\$37,149	\$38,882	4.7%	\$1,733		
Tuition	28,540	29,910	4.8%	1,370		
Mandatory Fees	500	585	17.0%	85	Activity Fee: \$500	Activity Fee: \$585
Room & Board	8,109	8,387	3.4%	278	(Fresh, Soph & some Jr.)	(Fresh, Soph & some Jr.)
Yale Total	\$37,000	\$38,850	5.0%	\$1,850		
Tuition	28,400	29,820	5.0%	1,420		
Room & Board	8,600	9,030	5.0%	430		

(1) For comparative purposes, the health services fee is included in the total amount shown for all schools, with the following exception:
Cornell's health fee (\$1,059 in FY04 and \$1202 in FY05), is optional and excluded.

(2) Princeton does not include its mandatory fee as part of its announced package. The mandatory fee has been included in the FY04 and FY05 totals for consistency and comparison.

SOURCE: INTERNAL SURVEY

Undergraduate Tuition Over Time: FY1985 - FY2005



Fiscal Year	Undergraduate Package						Economic Indicators ⁽¹⁾					
	Health Services			Student Services			U.S. CPI-U	Boston CPI-U	GDP IP Deflator (2000=100)	HEPI (1983=100)	Disposable Personal Income	Median Family Income Ages 45-54
	Tuition	Fee	Room	Board	Fee	Total						
1985	\$9,500	\$300	\$1,635	\$1,925	\$740	\$14,100	105.8	106.6	69.7	110.8	\$12,319	\$34,482
1986	10,266	324	1,750	1,980	780	15,100	108.8	111.2	71.3	116.3	13,037	36,653
1987	11,040	350	1,885	2,035	835	16,145	111.2	113.9	73.2	120.9	13,649	38,861
1988	11,645	370	2,065	2,145	875	17,100	115.8	120.2	75.7	126.2	14,241	41,413
1989	12,310	405	2,400	2,145	950	18,210	121.2	127.8	78.6	132.8	15,297	42,192
1990	13,085	460	2,560	2,275	1,015	19,395	127.0	134.3	81.6	140.8	16,257	46,101
1991	13,960	490	2,700	2,425	1,080	20,655	133.9	142.3	84.4	148.2	17,131	47,164
1992	14,860	550	2,900	2,620	1,150	22,080	138.2	146.6	86.4	153.5	17,609	49,606
1993	15,870	584	3,075	2,765	1,220	23,514	142.5	151.1	88.4	157.9	18,494	50,079
1994	16,856	614	3,225	2,910	1,275	24,880	146.2	153.5	90.3	163.3	18,872	52,034
1995	17,851	634	3,370	3,040	1,335	26,230	150.4	156.7	92.1	168.1	19,555	54,379
1996	18,838	634	3,510	3,200	1,393	27,575	154.5	160.6	93.9	173.0	20,287	55,029
1997	19,770	654	3,659	3,336	1,477	28,896	158.9	165.7	95.4	178.4	21,091	57,161
1998	20,600	666	3,808	3,470	1,536	30,080	161.7	169.6	96.5	184.7	21,940	59,959
1999	21,342	686	3,940	3,574	1,590	31,132	164.5	173.2	97.9	189.1	23,161	61,833
2000	22,054	711	4,072	3,685	1,642	32,164	169.3	179.3	100.0	196.9	23,968	65,303
2001	22,694	745	4,190	3,792	1,689	33,110	175.1	187.6	102.4	206.5	25,472	68,082
2002	23,457	816	4,331	3,919	1,746	34,269	178.2	193.3	104.1	215.0	26,236	68,114
2003	24,630	1,020	4,461	4,041	1,798	35,950	182.1	200.0	106.0	221.2	27,159	69,180
2004	26,066	1,142	4,706	4,162	1,852	37,928	186.1	207.0	108.2	231.5	28,034	70,149
2005	\$27,448	\$1,264	\$4,974	\$4,286	\$1,908	\$39,880	189.8	214.3	110.4	239.5	\$29,334	\$71,973

Average Annual Growth Rates

	Undergraduate Package						Economic Indicators ⁽¹⁾					
	Health Services			Student Services			U.S. CPI-U	Boston CPI-U	GDP IP Deflator (1996=100)	HEPI (1983=100)	Disposable Personal Income	Median Family Income Ages 45-54
	Tuition	Fee	Room	Board	Fee	Total						
20 YEAR	5.4%	7.5%	5.7%	4.1%	4.8%	5.3%	3.0%	3.6%	2.3%	3.9%	4.4%	3.7%
10 YEAR	4.4%	7.1%	4.0%	3.5%	3.6%	4.3%	2.4%	3.2%	1.8%	3.6%	4.1%	2.8%
5 YEAR	4.5%	12.2%	4.1%	3.1%	3.0%	4.4%	2.3%	3.6%	2.0%	4.0%	4.1%	2.0%
1 YEAR	5.3%	10.7%	5.7%	3.0%	3.0%	5.1%	2.0%	3.5%	2.0%	3.5%	4.6%	2.6%

(1) Economic indicators are averages of all index figures for the year. HEPI is based on a fiscal year. All other indices are based on the previous calendar year.

The following FY2005 indicators are estimated using the five-year annual compound growth rate:

GDP IP Deflator 2.0%, MFI 2.6%.

The following FY2005 indicators are estimated with inflation projections used by the Congressional Budget Office:

US CPI-U: 2.0%, Boston CPI-U: 3.5%.

SOURCE: BUREAU OF LABOR STATISTICS, BUREAU OF ECONOMIC ANALYSIS AND ECONOMIC INDICATORS PUBLICATION.

Degree Student Financial Assistance: FY2004 ⁽¹⁾

Expressed in thousands of dollars

GRANTS

	Institutional	Federal	Other		Total	As a % of Total for School
			Outside	Total		
College	\$69,428	\$6,064	\$11,282		\$86,775	77%
GSAS	56,479	19,731	5,911		82,121	68%
Business	11,652	-	2,184		13,836	20%
Dental	670	816	-		1,486	20%
Design	4,030	-	525		4,555	32%
Divinity	5,566	-	203		5,769	54%
Education	7,074	123	1,419		8,616	36%
Government	10,219	-	6,687		16,906	51%
Law	10,958	-	1,735		12,693	22%
Medical	6,759	667	4,976		12,402	47%
Public Health	3,494	3,006	3,472		9,972	65%
Extension	457	150	34		641	17%
ART ⁽²⁾	82	-	21		103	7%
TOTAL	\$186,868	\$30,557	\$38,450		\$255,875	51%

Grants

Institutional grants are from University unrestricted and restricted monies.

Federal grants include all Federal programs in each school including programs such as the Pell grant, SEOG or graduate training grants.

Outside grants include state and private support of students. In some schools, these numbers may include corporate sponsorship or other sponsored billing.

LOANS

	Institutional	Federal	Other		Total	As a % of Total for School
			Outside	Total		
College ⁽³⁾	\$2,687	\$11,991	\$6,365		\$21,044	19%
GSAS	-	1,155	293		1,448	1%
Business	1,064	17,970	37,744		56,778	80%
Dental	318	5,026	615		5,959	80%
Design	-	6,834	2,022		8,856	61%
Divinity	-	4,052	40		4,092	38%
Education	8	11,803	2,804		14,615	61%
Government	-	7,955	7,755		15,709	47%
Law	1,259	26,824	15,777		43,860	76%
Medical	2,511	10,977	261		13,749	52%
Public Health	-	4,357	994		5,351	35%
Extension	-	2,785	305		3,090	83%
ART ⁽²⁾	-	750	578		1,328	88%
TOTAL	\$7,847	\$112,479	\$75,552		\$195,878	39%

Loans

Institutional loans are made to students from University capital without Federal guarantee.

Federal loan programs may involve capital from Harvard, or other private or Federal sources, loaned under Federal sponsorship.

Outside loans include private capital loaned to students or parents. Personal loans are not included here.

EMPLOYMENT

	Work-Study (CWSP)	Other Term	Total	As % of Total for School	TOTAL
					Grant, Loans & Employment
College	\$948	\$4,478	\$5,426	5%	\$113,245
GSAS	323	36,603	36,926	31%	120,495
Business	-	-	-	0%	70,614
Dental	8	-	8	0%	7,453
Design	925	115	1,040	7%	14,451
Divinity	834	-	834	8%	10,695
Education	732	-	732	3%	23,963
Government	222	481	704	2%	33,319
Law	825	637	1,462	3%	58,014
Medical	83	-	83	0%	26,234
Public Health	33	-	33	0%	15,355
Extension	-	-	-	0%	3,730
ART ⁽²⁾	37	38	75	5%	1,506
TOTAL	\$4,971	\$42,352	\$47,323	9%	\$499,076

Employment

Work-Study is a Federally- sponsored partnership with colleges and universities to provide students with the opportunity to work while in school.

Other term earnings reflect on-campus earnings by students who are not part of the work-study program. Jobs include casual employment, teaching fellowships, research assistantships and resident tutors.

(1) Amounts do not include the Law School, Business School or the School of Government funding for graduates in the Low Income Protection Plan/Loan Repayment Assistance Programs.

(2) ART refers to American Repertory Theater.

(3) College total for loans includes Parental Loans and PLUS loans.

SOURCE: INTERNAL SURVEY

Federal Sponsored Research: FY2003 - FY2004

Expressed in thousands of dollars

	FY2003			FY2004			Change in Total Exp. 2003/2004	FY2004 Indirect as % of Total
	Direct Costs	Indirect Costs	Total Costs	Direct Costs	Indirect Costs	Total Costs		
ACADEMIC DEPARTMENTS								
FAS								
Arts & Sciences	\$47,973	\$20,068	\$68,041	\$56,070	\$23,386	\$79,456	16.8%	29.4%
Division of Engineering and Applied Sciences	18,918	7,340	26,258	20,234	8,323	28,557	8.8%	29.1%
Harvard College Library	85	7	91	112	9	121	32.7%	7.4%
Museum of Comparative Zoology/Peabody Museum	2,178	610	2,789	3,788	943	4,731	69.6%	19.9%
College Life, Athletics, Grad Dorms	-	-	-	-	-	-	-	-
FAS Subtotal	\$69,154	\$28,026	\$97,180	\$80,204	\$32,660	\$112,864	16.1%	28.9%
School of Business Administration	55	35	90	9	(29)	(20)	-	146.0%
School of Dental Medicine	2,434	497	2,931	3,264	879	4,143	41.4%	21.2%
School of Design	770	235	1,005	101	47	148	(85.3%)	31.7%
Divinity School	40	-	40	-	-	-	-	-
Graduate School of Education	5,160	877	6,037	4,981	837	5,819	(3.6%)	14.4%
JFK School of Government	7,504	2,337	9,841	6,713	1,784	8,497	(13.7%)	21.0%
Law School	162	13	174	296	30	326	87.1%	9.2%
Medical School	124,220	51,652	175,872	141,587	60,062	201,649	14.7%	29.8%
School of Public Health	87,565	29,714	117,279	97,948	34,913	132,861	13.3%	26.3%
Radcliffe Institute for Advanced Study	371	179	550	307	151	457	(16.8%)	32.9%
Other Faculties Subtotal	\$228,280	\$85,538	\$313,818	\$255,206	\$98,673	\$353,880	12.8%	27.9%
Other Academic Departments ⁽¹⁾	\$828	\$36	\$864	\$992	\$94	\$1,087	25.8%	8.7%
Service and Other Departments ⁽²⁾	\$680	\$124	\$803	\$435	\$46	\$481	(40.1%)	9.6%
GRAND TOTAL ⁽³⁾	\$298,942	\$113,723	\$412,664	\$336,838	\$131,474	\$468,313	13.5%	28.1%

(1) Includes Arnold Arboretum, Harvard University Art Museums, Nieman Foundation and Joint Center for Housing Studies.

(2) Includes Central Administration, Memorial Church, University Library and University Health Services.

(3) Totals include both Federal and Federal Once-Removed (Federal Once-Removed total cost for FY2003 is \$47,995 and for FY2004 is \$54,045). Totals exclude financial aid.

SOURCE: OFFICE OF SPONSORED RESEARCH - FINANCIAL SERVICES

Federal Research by Agency: FY2003 - FY2004

Expressed in thousands of dollars

	FY2003	FY2004	% Change	FY2004 Total as % of Federal Total
Department of Health & Human Services				
National Institutes of Health	\$297,035	\$343,248	15.6%	73.3%
Other DHHS	22,713	24,621	8.4%	5.3%
Subtotal	\$319,749	\$367,869	15.0%	78.6%
Department of Defense				
Department of the Navy	7,820	7,725	(1.2%)	1.6%
Department of the Army	4,642	4,824	3.9%	1.0%
Department of the Air Force	3,726	2,748	(26.2%)	0.6%
Defense Advanced Research Projects Agency ⁽¹⁾	2,872	2,924	1.8%	0.6%
Subtotal	\$19,060	\$18,222	(4.4%)	3.9%
National Science Foundation	30,437	37,525	23.3%	8.0%
Department of Energy	10,701	12,897	20.5%	2.8%
Nat'l. Aeronautics & Space Administration	9,402	10,429	10.9%	2.2%
Department of Education	6,096	5,393	(11.5%)	1.2%
Environmental Protection Agency	4,077	4,513	10.7%	1.0%
Agency for International Development	4,153	3,684	(11.3%)	0.8%
Department of State	1,705	1,797	5.4%	0.4%
Department of Commerce	979	1,371	40.0%	0.3%
Department of Justice	1,491	1,022	(31.4%)	0.2%
Department of Housing and Urban Development	1,132	469	(58.6%)	0.1%
Nat'l. Endowment for the Humanities	1,033	441	(57.3%)	0.1%
General Services Administration	238	183	23.1%	0.0%
Department of Transportation	348	174	(49.9%)	0.0%
Department of Agriculture	108	148	37.1%	0.0%
National Endowment for the Arts	48	93	93.2%	0.0%
Central Intelligence Agency	45	56	23.6%	0.0%
Department of Veterans Affairs	174	8	(95.3%)	0.0%
Other ⁽²⁾	1,690	2,020	19.6%	0.4%
GRAND TOTAL ⁽³⁾	\$412,664	\$468,312	13.5%	100.0%

(1) Includes Other - Department of Defense.

(2) Other includes U.S. Information Agency, and 10 other Federal Agencies.

(3) Totals include both Federal and Federal Once-Removed (Federal Once-Removed total cost for FY2003 is \$47,995 and for FY2004 is \$54,045). Totals exclude financial aid.

SOURCE: OFFICE OF SPONSORED RESEARCH - FINANCIAL SERVICES

Non-Federal Sponsored Research: FY2003 - FY2004



Expressed in thousands of dollars

	FY2003			FY2004			Change in Total Exp. 2003/2004	FY2004 Indirect as % of Total
	Direct Costs	Indirect Costs	Total Costs	Direct Costs	Indirect Costs	Total Costs		
ACADEMIC DEPARTMENTS								
FAS								
Arts & Sciences	\$11,282	\$583	\$11,866	\$14,379	\$1,196	\$15,575	31.3%	7.7%
Division of Engineering and Applied Sciences	1,415	278	1,693	1,123	261	1,384	(18.2%)	18.8%
Harvard College Library	19	-	19	-	-	-	(100.0%)	-
Museum of Comparative Zoology/ Peabody Museum	147	2	149	238	11	249	67.2%	4.5%
College Life, Athletics, Grad Dorms	-	-	-	-	-	-	-	-
FAS Subtotal	\$12,863	\$863	\$13,726	\$15,740	\$1,468	\$17,208	25.4%	8.5%
School of Business Administration	190	4	194	216	-	216	11.6%	0.0%
School of Dental Medicine	344	60	404	94	38	132	(67.2%)	28.9%
School of Design	212	9	221	334	33	367	66.1%	9.0%
Divinity School	767	49	816	526	18	543	(33.4%)	3.3%
Graduate School of Education	8,181	656	8,837	7,460	535	7,995	(9.5%)	6.7%
JFK School of Government	16,446	2,116	18,562	14,525	1,943	16,468	(11.3%)	11.8%
Law School	4,748	273	5,021	4,696	290	4,986	(0.7%)	5.8%
Medical School	41,185	3,357	44,541	36,229	780	37,010	(16.9%)	2.1%
School of Public Health Radcliffe Institute for Advanced Study	27,877	4,018	31,895	30,314	3,823	34,137	7.0%	11.2%
Other Faculties Subtotal	591	30	621	613	9	621	0.0%	1.4%
Other Academic Departments ⁽¹⁾	\$955	\$51	\$1,006	\$1,587	\$82	\$1,669	65.9%	4.9%
Service and Other Departments ⁽²⁾	\$401	\$39	\$440	\$908	\$21	\$929	111.2%	2.3%
GRAND TOTAL ⁽³⁾	\$114,758	\$11,525	\$126,283	\$113,241	\$9,040	\$122,281	(3.2%)	7.4%

(1) Includes Arnold Arboretum, Harvard University Art Museums, Nieman Foundation and Joint Center for Housing Studies.

(2) Includes Central Administration, Memorial Church, University Library and University Health Services.

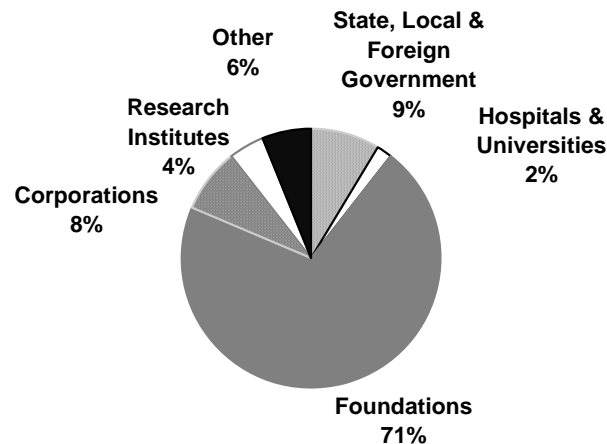
(3) Total excludes financial aid expenditures.

SOURCE: OFFICE OF SPONSORED RESEARCH - FINANCIAL SERVICES

Expenditures under Non-Federal Sponsored Research by Sponsor Source: FY2004

Expressed in thousands of dollars

	Hospitals & Other Universities	State, Local, & Foreign Government	Foundations	Corporations	Research Institutes	Other Sources	Total
FAS							
Faculty of Arts & Sciences	\$362	\$145	\$12,387	\$894	\$1,312	\$474	\$15,575
Division of Engineering and Applied Sciences	-	-	572	805	-	7	1,384
Harvard College Library	-	-	-	-	-	-	-
Museum of Comp. Zoology/Peabody Museum	66	-	172	-	11	-	249
College Life, Athletics, Grad Dorms	-	-	-	-	-	-	-
FAS Subtotal	\$428	\$145	\$13,131	\$1,699	\$1,323	\$481	\$17,208
School of Business Administration	-	-	216	-	-	-	216
School of Dental Medicine	-	6	12	108	-	7	132
School of Design	-	(12)	217	112	-	50	367
Divinity School	-	-	290	-	254	-	543
Graduate School of Education	200	625	6,690	64	92	323	7,995
JFK School of Government	121	1,555	10,427	1,766	201	2,397	16,468
Law School	16	50	4,705	108	90	17	4,986
Medical School	604	2,443	23,600	3,879	3,403	3,082	37,010
School of Public Health	1,187	5,621	24,236	2,038	52	1,003	34,137
Radcliffe Institute for Advanced Study	-	-	621	-	-	-	621
Other Faculties Subtotal	\$2,127	\$10,288	\$71,014	\$8,075	\$4,092	\$6,880	\$102,475
Other Academic Departments ⁽¹⁾	-	\$6	\$1,595	-	-	\$68	\$1,669
Service and Other Departments ⁽²⁾	-	-	\$619	\$310	-	-	\$929
GRAND TOTAL ⁽³⁾	\$2,555	\$10,439	\$86,359	\$10,084	\$5,415	\$7,429	\$122,281



(1) Includes Arnold Arboretum, Harvard University Art Museums, Nieman Foundation and Joint Center for Housing Studies.

(2) Includes Central Administration, University Library and University Health Services.

(3) Total excludes financial aid expenditures.

SOURCE: OFFICE OF SPONSORED RESEARCH - FINANCIAL SERVICES

Historical Funding of Research by Sponsor

Expressed in thousands of dollars

Federal (Prime and Once-Removed)

	Fiscal Year				
	2000	2001	2002	2003	2004
National Institutes of Health	\$218,137	\$241,567	\$283,112	\$297,035	\$343,248
National Science Foundation	25,587	28,087	32,665	30,437	37,525
Other DHHS	14,308	19,109	18,549	22,714	24,621
Department of Defense	15,962	13,615	16,569	19,060	18,222
Department of Energy	8,649	8,428	8,751	10,701	12,897
Nat'l. Aeronautics & Space Administration	10,246	9,339	9,803	9,402	10,429
Department of Education	6,045	5,514	6,634	6,096	5,393
Environmental Protection Agency	4,446	4,398	4,025	4,077	4,513
Agency for International Development	15,650	8,490	4,286	4,153	3,684
Department of Justice	3,187	3,544	2,884	1,491	1,022
National Endowment for the Humanities	1,212	981	613	1,033	441
Other ⁽¹⁾	5,130	5,713	6,244	6,465	6,317
Federal Total	\$328,560	\$348,785	\$394,135	\$412,664	\$468,312

Non-Federal

	2000	2001	2002	2003	2004
Foundations	\$56,950	\$92,557	\$89,503	\$89,251	\$86,359
State, Local & Foreign Government	14,015	9,944	9,840	10,629	10,439
Corporations	15,471	18,425	13,875	9,916	10,084
Other Sources	9,779	10,028	8,828	8,886	7,429
Research Institutes	4,426	5,580	3,751	5,347	5,415
Hospitals & Other Universities	1,579	1,930	2,172	2,254	2,555
Non-Federal Total	\$102,220	\$138,464	\$127,970	\$126,283	\$122,281
Grand Total ⁽²⁾	\$430,780	\$487,249	\$522,104	\$538,947	\$590,593

Growth in Sponsored Projects

Expressed in millions of dollars

Fiscal Year	Expenditure Actual \$	% Change	Expressed	
			as FY04 \$	% Change in FY04 \$
2000	\$430.8	-	\$473.5	-
2001	487.2	13.1%	517.9	9.4%
2002	522.1	7.2%	545.2	5.3%
2003	538.9	3.2%	550.7	1.0%
2004	\$590.6	9.6%	\$590.6	7.2%

(1) Other includes U.S. Information Agency, Department of State, Department of Housing and Urban Development, Department of Commerce, Department of Transportation, General Services Administration, Department of Veterans Affairs, Department of Agriculture, National Endowment for the Arts, and 10 other Federal Agencies. Agencies listed are for FY2004. Information on agencies in prior years can be obtained from the Office of Sponsored Research.

(2) Total excludes financial aid expenditures.

SOURCE: OFFICE OF SPONSORED RESEARCH - FINANCIAL SERVICES

Harvard University Library System

The Harvard Library

The Harvard University Library, founded in 1638, is the largest academic library system in the world. Harvard's extensive collections serve as invaluable resources for students, faculty, and researchers. Through its use of cutting-edge technology, the Harvard University Library is offering online access to an increasing number of library resources. For more information about Harvard's libraries, visit <http://lib.harvard.edu>.

Harvard's Library Holdings

Harvard's library research resources include over 15.39 million volumes, approximately 7.5 million photographs, millions of manuscript pages, recordings, maps, ephemera, and an exploding number of digital resources, which, together, are under the day-to-day care and management of the 1,400 full-time-equivalent staff members in the nearly 90 libraries located across the University.

The University Library System

Through the Harvard University Library (HUL), Harvard's numerous libraries are gathered into a single system. HUL is a department of the University's Central Administration that reports to the president and is headed by the senior faculty member who holds the title of Carl H. Pforzheimer University Professor and Director of the University Library. In addition to serving as the head of HUL, the director interprets the technical and organizational challenges of the library system to the president and serves as chief steward of the collections for the Harvard Corporation.

HUL operates programs and services that lay the foundations for the acquisition, dissemination, and preservation of those holdings. HUL's programs and services cover five service areas:

- Office for Information Systems, which provides information systems and services that support the work of the Harvard Libraries;
- Harvard Depository, a state-of-the art climate-controlled paper-based storage and retrieval facility;
- Harvard University Archives, including the Records Management Office, which is responsible for the institutional memory of the University, including University records and related historical collections;
- Open Collections Program, which creates comprehensive, subject-based digital collections that will benefit teaching, learning, and research worldwide; and
- Weissman Preservation Center, which manages programs, projects, and services dedicated to preserving the vast collections held in the Harvard University Library system.

Summary of University Library Growth and Expenditures FY2004

	Collections Increase ⁽¹⁾			Expenditures (in \$000's) ⁽²⁾					
	Gross	Net	Volumes & Pamphlets	Salaries & Wages	Benefits	Books & Other Materials	Binding	Other Costs	Total
University Library (HUL) ⁽³⁾	891	891	116,389	\$6,123	\$1,660	\$9	\$4	\$4,930	\$12,726
Faculty of Arts & Sciences									
Central Collections	206,313	167,382	9,451,227	27,485	7,442	14,927	589	18,715	69,157
House Libraries	-	-	130,687	100	2	11	0	7	119
Departmental & Divisional Libraries	6,747	5,333	340,103	945	224	2,117	51	77	3,415
Special & Research Libraries	24,250	20,321	1,170,366	3,383	893	1,704	78	902	6,960
Graduate Faculty Libraries	63,972	40,653	4,183,134	18,285	4,996	9,117	392	8,411	41,201
Less Duplication	-	-	-	-	-	-	-	(5,563)	(5,563)
University Library Totals	302,173	234,580	15,391,906	\$56,321	\$15,217	\$27,885	\$1,113	\$27,480	\$128,016

(1) Net increase refers to the increase in volumes after accounting for replacement of previously-owned volumes.

(2) Due to rounding, expenditures may be slightly different than reported in the Library Annual Report.

(3) Expenditures for HD reflect operations but exclude the interest and amortization for the Harvard Depository of \$1,792,563.

SOURCE: HARVARD UNIVERSITY LIBRARY ANNUAL REPORT 2003-2004

Library Collections: FY2004

	Increase FY2004		Volumes & Pamphlets FY2004 ⁽¹⁾
	Gross	Net	
University Library			
University Archives	620	620	116,015
Weissman Preservation Center	271	271	374
Library of the Faculty of Arts & Sciences (Harvard College Library)			
Central Collections			
Cabot	5,939	(13,912)	203,912
Fine Arts	9,323	8,142	323,351
Geological Sciences	223	223	66,960
Harvard - Yenching	29,499	29,499	1,092,912
Hilles	2,277	2,007	190,501
Houghton	3,341	2,810	475,268
Lamont	3,191	(6,189)	191,248
Littauer	4,876	2,989	427,707
Loeb Music	7,253	7,053	244,706
Social Sciences Program	2,016	(1,806)	50,513
Tozzer (Peabody Museum)	5,061	5,043	243,278
Widener	133,314	131,523	5,940,871
House Libraries ⁽²⁾			
	-	-	130,687
Department & Divisional Libraries ⁽³⁾			
	6,747	5,333	340,103
Special Libraries			
Biblioteca Berenson	3,472	3,472	140,094
Botany Libraries	3,809	3,807	285,480
Career Reference	215	(17)	5,124
Center for Astrophysics: Wolbach Library	1,338	1,280	75,786
Center for European Studies	364	364	13,244
Center for Hellenic Studies	1,190	1,190	54,690
Center for International Affairs	-	-	9,695
Center for Middle Eastern Studies ⁽⁴⁾	-	-	-
Dumbarton Oaks Research Library	7,775	7,252	195,216
Fairbank Research Center	1,000	1,000	27,800
Gibb Islamic Seminar	19	19	7,517
Grossman Library for University Extension	588	588	5,125
Harvard Forest in Petersham	100	(3,000)	25,500
Harvard Planning Information Research Center	205	205	808
Milman Parry Collection of Oral Literature	-	-	1,200
Museum of Comparative Zoology	3,432	3,432	291,991
Nieman Collection of Contemporary Journalism	345	345	3,230
Davis Center (formerly Russian Research Center)	305	295	19,178
Ukrainian Research Institute: Reference	38	38	3,336
University Development Office	55	51	5,352
Graduate and Professional School Libraries			
Business: Baker Library	5,900	2,576	634,849
Design: Frances L. Loeb	4,556	3,740	284,564
Divinity: Andover - Harvard Theological	6,905	6,720	475,094
Education: Monroe C. Gutman	3,571	3,182	201,620
JFK School of Government ⁽⁵⁾	2,847	506	63,188
Law School	30,379	15,381	1,704,219
Medicine, Public Health and Dental Medicine			
Center for Population Studies	588	585	16,309
Francis A. Countway Library of Medicine	8,719	7,978	707,484
New England Primate Research Center	250	(50)	14,412
Radcliffe Institute for Advanced Study			
Henry A. Murray Research Center	-	-	277
Schlesinger Library on History of American Women	257	35	81,118
TOTAL UNIVERSITY COLLECTION	302,173	234,580	15,391,906

(1) Volumes and Pamphlets for individual libraries include volumes transferred to the Depository. Totals reflect corrections in count.

(2) Includes Adams, Cabot, Currier, Dudley, Dunster, Eliot, Kirkland, Leverett, Lowell, Mather, Pforzheimer, Quincy, Winthrop.

(3) Includes Afro-American Studies; Applied Sciences: Gordon McKay, Biochemical Sciences, Bio Labs; Celtic: F.N. Robinson; Chemistry; Classics: H.W. Smyth, Center on Contemporary Japan; English: Child Memorial; History; History of Science; Linguistics; Mathematics: G.D. Birkoff; Medieval Studies Library; Near Eastern Languages & Literatures; Paleography; Philosophy: Robbins; Physics; Psychology; Sanskrit & Indian Studies; Sociology & Social Relations; Statistics.

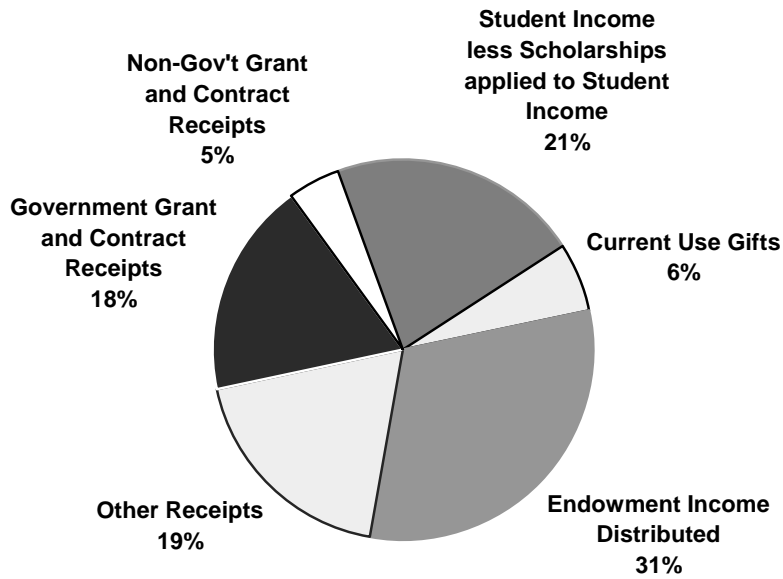
(4) The Center for Middle Eastern Studies Library closed in FY03. Collection either sold, or sent to Weatherhead Center for International Affairs and/or Houghton Library.

(5) Includes the Belfer Center for Science and International Affairs.

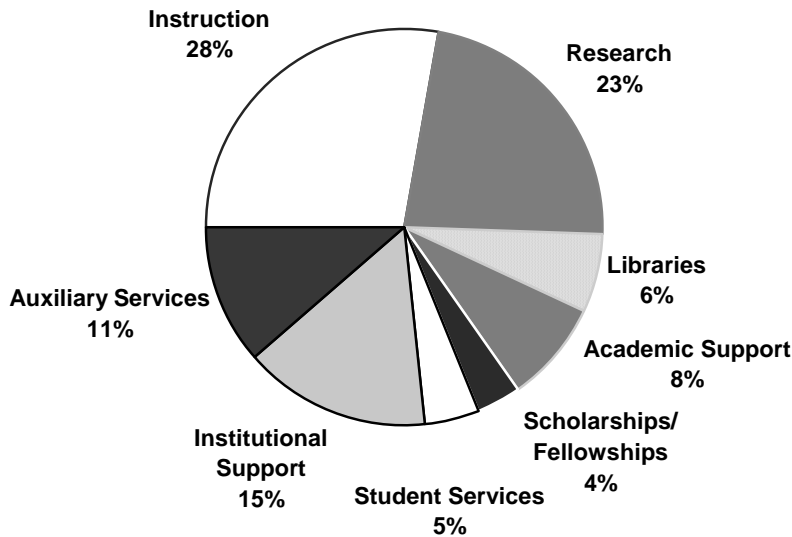
SOURCE: HARVARD UNIVERSITY LIBRARY ANNUAL REPORT 2003-2004

Total University Income and Expenses Year Ended June 30, 2004
Expressed in thousands of dollars

Total Income - \$2,597,706



Total Expenses - \$2,560,919



SOURCE: FINANCIAL REPORT TO THE BOARD OF OVERSEERS

Departmental Operating Expenses Year Ended June 30, 2004 

Expressed in thousands of dollars

	Salaries and Wages	Employee Benefits	Scholarships/ Student Awards	Less: Financial Aid Applied against Income	Equipment and Supplies	Space and Occupancy	Depreciation	Other Expenses ⁽¹⁾	Total Expenses
Faculty of Arts & Sciences									
Faculty of Arts & Sciences	\$294,460	\$60,185	\$133,353	(\$100,214)	\$51,956	\$104,372	\$51,734	\$104,319	\$700,165
Division of Continuing Education	16,342	2,932	4,227	(4,200)	1,116	1,810	704	11,648	34,579
FAS Museums	10,405	2,626	1,004	-	1,638	2,852	1,015	5,619	25,159
Total Faculty of Arts & Sciences	\$321,207	\$65,743	\$138,584	(\$104,414)	\$54,710	\$109,034	\$53,453	\$121,586	\$759,903
School of Business Administration	114,266	25,368	12,620	(10,836)	26,767	21,327	13,003	89,691	292,206
School of Dental Medicine	10,864	2,667	2,601	(956)	1,943	1,232	999	5,187	24,537
Graduate School of Design	12,917	2,690	4,219	(3,663)	1,679	2,873	901	6,503	28,119
Divinity School	10,591	2,342	5,601	(4,714)	1,158	2,130	1,144	3,199	21,451
Graduate School of Education	26,793	5,723	6,519	(4,945)	1,628	4,011	1,566	13,268	54,563
School of Government	48,169	11,193	11,550	(7,948)	6,045	11,157	2,445	24,013	106,624
Law School	50,314	11,348	12,769	(10,296)	5,760	14,257	4,683	25,358	114,193
Medical School	152,466	37,501	44,671	(16,702)	46,230	67,486	42,679	107,446	481,777
Radcliffe Institute for Advanced Study	7,372	1,762	2,722	-	420	1,052	428	3,755	17,511
School of Public Health	74,882	17,414	12,389	(5,838)	12,543	22,178	9,246	65,605	208,419
Other Faculties Subtotal	\$508,634	\$118,008	\$115,661	(\$65,898)	\$104,173	\$147,703	\$77,094	\$344,025	\$1,349,400
Total Faculties	\$829,841	\$183,751	\$254,245	(\$170,312)	\$158,883	\$256,737	\$130,547	\$465,611	\$2,109,303
Arnold Arboretum	3,916	1,015	70	-	437	672	200	1,805	8,115
Harvard University Art Museums	9,550	2,539	55	-	4,167	1,005	1,439	3,373	22,128
Joint Center for Housing Studies	998	256	24	-	60	155	-	622	2,115
Nieman Foundation	1,188	322	1,135	-	137	158	26	1,607	4,573
Villa I Tatti	2,175	683	712	-	611	735	174	1,097	6,187
Other Academic Departments Subtotal	\$17,827	\$4,815	\$1,996	-	\$5,412	\$2,725	\$1,839	\$8,504	\$43,118
Service Departments	\$103,262	\$28,248	\$543	-	\$39,224	(\$4,875)	\$30,394	\$5,930	\$202,726
Memorial Church	\$1,243	\$306	-	-	\$94	\$746	\$87	\$553	\$3,029
Central Administration ⁽²⁾	\$83,855	\$87,161	\$6,067	(\$3,125)	-\$5,303	\$7,300	\$19,271	\$7,517	\$202,743
TOTAL UNIVERSITY EXPENSES	\$1,036,028	\$304,281	\$262,851	(\$173,437)	\$198,310	\$262,633	\$182,138	\$488,115	\$2,560,919

(1) Includes expense credits and transfers.

(2) Includes Harvard University Library and other University funds.

SOURCE: UNIVERSITY ACCOUNTING SERVICES

Physical Plant: FY2004

The University owns and operates more than five hundred buildings of varying sizes and characteristics, spread over a wide geographic area. They encompass approximately 21.5 million gross square feet of space. The physical plant provides living space for students and faculty, research facilities to advance our base of knowledge, classroom and library spaces for the dissemination of knowledge, and space for administrative and support services.

Location ⁽¹⁾	Gross Square Footage of		Principal Activity on Site
	Acres	Buildings (in 000's)	
Cambridge, MA	224	13,202	Main Campus
Boston, MA	22	2,396	Medical and Dental Schools, School of Public Health
Boston (Allston)	347	4,116	Business School; Printing and Publisher; Athletics; Other
Boston (Jamaica Plain)	233	41	Arnold Arboretum
Watertown, MA	29	1,160	Arsenal Buildings
Weston, MA	66	11	Case Estates (Arnold Arboretum)
Somerville, MA	2	16	Affiliated Housing
Medford, MA	1		
Bedford, MA	79	11	Concord Field Station
Carlisle, MA	69		Concord Field Station
Concord, MA	605		Field Station (Museum of Comparative Zoology)
Marlborough, MA	50		Animal Research Center (NERPC)
Southborough, MA	87	229	Harvard Depository
Petersham, MA	2,648	71	Harvard Forest (Forestry, Botany)
Hamilton, MA	99		Harvard Forest
Phillipston, MA	205		Harvard Forest
Royalston, MA	57		Harvard Forest
Harvard, MA	37	19	Agassiz Cottage (Observatory)
Shrewsbury, MA	6	16	Artemas Ward Homestead (Museum)
Kittery Point & Sutton Island, ME	n/a	12	Howells Memorial & Kendall Houses
Ledyard, CT	n/a	21	Red Top, Crew Quarters
Washington, DC	16	150	Dumbarton Oaks & Center for Hellenic Studies
Florence, Italy	n/a	94	Villa I Tatti - Ctr. for Italian Renaissance Studies
TOTAL	4,882	21,565	

(1) In addition to locations listed above, Harvard has numerous smaller holdings.

SOURCE: HARVARD PLANNING AND REAL ESTATE

Physical Plant: FY2004

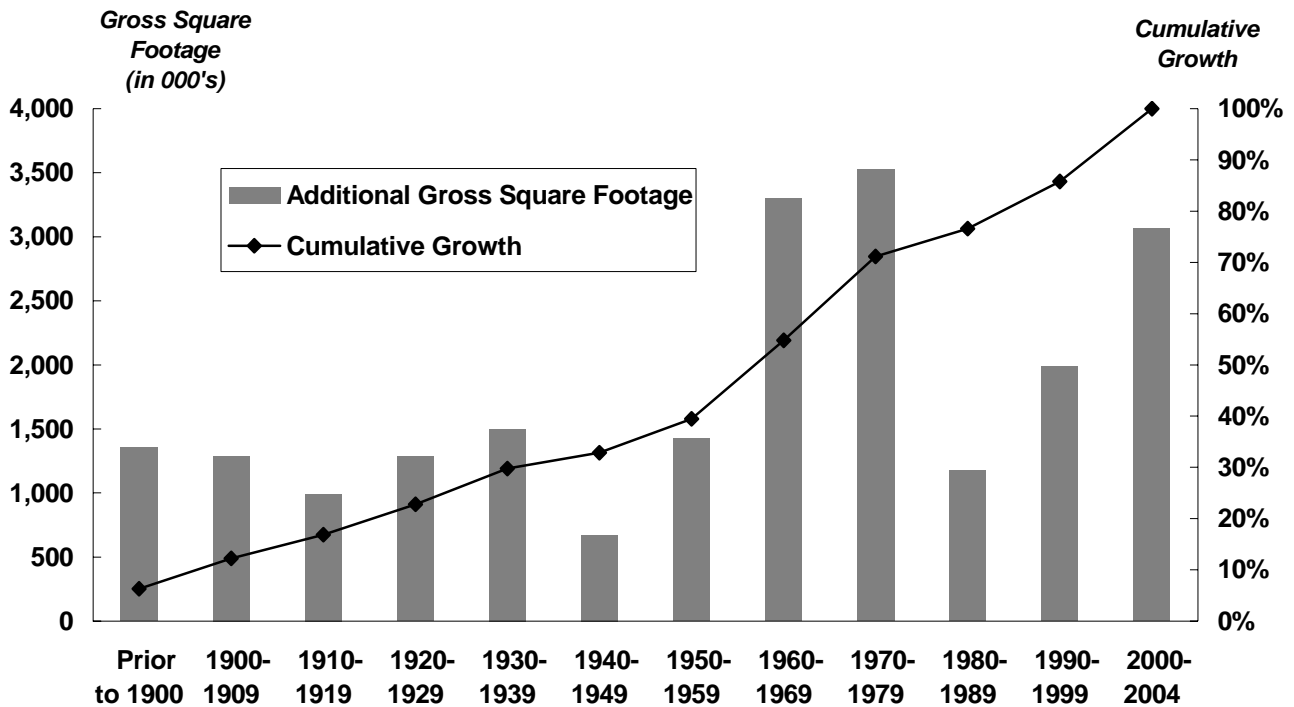
Building Ownership

	Number of Buildings	Gross Square Footage	
		of Buildings (in 000's)	As a % of Total
FAS	260	8,606	39.9%
Radcliffe	15	284	1.3%
Business	33	1,470	6.8%
Dental	2	52	0.2%
Design	2	179	0.8%
Divinity	7	180	0.8%
Education	6	215	1.0%
Government	4	264	1.2%
Law	19	920	4.3%
Medical	24	1,885	8.7%
Public Health	7	573	2.7%
Real Estate	162	5,909	27.4%
Central Administration	53	1,027	4.8%
TOTAL	594	21,566	100.0%

Primary Uses

	Gross Square Footage	
	of Buildings (in 000's)	As a % of Total
Residential/Dormitory	6,617	30.7%
Office/Classroom	4,874	22.6%
Lab/Studio	3,676	17.0%
Library	1,556	7.2%
Assembly/Museum	1,146	5.3%
Support	1,552	7.2%
Commercial	1,175	5.4%
Athletic	891	4.1%
Health Care	79	0.4%
TOTAL	21,566	100.0%

Additions to the Physical Plant



SOURCE: HARVARD PLANNING AND REAL ESTATE

Market Value of Endowment Funds as of June 30, 2004

Expressed in thousands of dollars

Individual Unit Value: \$1,215.68 ⁽¹⁾

	Endowment Market Value ⁽¹⁾	Participating Units	Market Value % of Total
Arts and Sciences ⁽²⁾	\$10,256,052	8,423,517	46.8%
Business	1,602,580	1,307,762	7.3%
Dental	140,214	115,338	0.6%
Design	283,266	233,010	1.3%
Divinity	400,107	329,122	1.8%
Education	342,062	281,375	1.6%
Government ⁽³⁾	672,674	547,420	3.1%
Law	1,099,556	902,360	5.0%
Medical	2,463,945	2,026,055	11.3%
Radcliffe Institute for Advanced Study	355,221	292,115	1.6%
Public Health	743,238	611,376	3.4%
Other Academic Departments ⁽⁴⁾	867,137	711,243	4.0%
Central Administration ⁽⁵⁾	2,672,320	2,192,163	12.2%
Subtotal	\$21,898,372	17,972,856	100.0%
Pledge Balances	443,656	-	-
Interests in Perpetual Trusts held by Others	245,277	-	-
Total Endowment	\$22,587,305	17,972,856	100.0%

Historical Market Value of Endowment

	June 30, 2001	June 30, 2002	June 30, 2003
Arts and Sciences ⁽²⁾	\$7,673,418	\$7,902,050	\$8,743,246
Business	1,214,511	1,192,032	1,330,368
Dental	115,081	111,771	120,992
Design	236,345	223,400	244,803
Divinity	338,822	321,475	346,614
Education	284,855	272,016	294,038
Government ⁽³⁾	559,857	531,909	582,141
Law	877,192	840,291	927,308
Medical	1,993,657	1,913,922	2,094,252
Radcliffe Institute for Advanced Study	304,942	256,352	289,939
Public Health	616,604	587,200	633,753
Other Academic Departments ⁽⁴⁾	1,214,162	683,920	742,188
Central Administration ⁽⁵⁾	2,221,290	2,110,918	2,284,532
Subtotal	\$17,650,736	\$16,947,256	\$18,634,174
Pledge Balances	308,356	348,264	445,244
Interests in Perpetual Trusts held by Others	300,107	222,501	215,317
Total Endowment	\$18,259,199	\$17,518,021	\$19,294,735

(1) Market value also includes endowment funds that are not unitized. This accounts for the difference between (unit price x number of units) and market value.

(2) Arts and Sciences includes: Continuing Education, DEAS, College Library, Museums, GSAS, Athletics, and College Life and Student Services. As of July 1, 2001, Dumbarton Oaks is included in Arts and Sciences.

(3) Government includes Institute of Politics.

(4) Other Academic Departments include: Arnold Arboretum, Dumbarton Oaks (FY01), Harvard Institute for International Development, Harvard University Art Museums, Nieman Foundation and Villa I Tatti.

(5) In addition to Central Administration, includes the President's Funds, University Professorships, University Press, University Health Services and Memorial Church.

SOURCE: ANNUAL UNIVERSITY FINANCIAL REPORT

Historical Endowment Performance: FY1985 - FY2005

Fiscal Year	Unit Value at Beginning of the Year ⁽¹⁾	Dollar Value and Percentage Beginning Value Per Unit						Actual Distribution Per Unit ⁽³⁾	Spending Rate ⁽⁴⁾
		Income		Capital Gain		Total Return ⁽²⁾			
1985	154.13	11.52	7.5%	28.34	18.4%	39.86	25.9%	7.58	4.92%
1986	182.47	12.53	6.9%	42.28	23.2%	54.81	30.0%	7.86	4.31%
1987	224.75	11.16	5.0%	32.03	14.3%	43.19	19.2%	8.09	3.60%
1988	256.78	10.41	4.1%	3.57	1.4%	13.98	5.4%	8.49	3.31%
1989	260.35	13.94	5.4%	18.27	7.0%	32.21	12.4%	10.16	3.90%
1990	278.62	14.57	5.2%	6.04	2.2%	20.61	7.4%	10.65	3.82%
1991	284.66	12.75	4.5%	(9.72)	(3.4%)	3.03	1.1%	11.96	4.20%
1992	274.94	11.87	4.3%	20.26	7.4%	32.13	11.7%	12.44	4.52%
1993	295.20	11.70	4.0%	36.68	12.4%	48.38	16.4%	14.08	4.77%
1994	331.88	13.19	4.0%	19.05	5.7%	32.24	9.7%	15.01	4.52%
1995	350.93	11.90	3.4%	45.87	13.1%	57.77	16.5%	16.07	4.58%
1996	396.80	15.23	3.8%	86.03	21.7%	101.26	25.5%	17.20	4.33%
1997 ⁽⁵⁾	482.83	14.60	3.0%	106.53	22.1%	121.13	25.1%	19.84	4.11%
1998	589.36	10.64	1.8%	108.45	18.4%	119.09	20.2%	21.90	3.72%
1999	697.81	21.57	3.1%	60.94	8.7%	82.51	11.8%	23.14	3.32%
2000	758.75	14.42	1.9%	227.20	29.9%	241.62	31.8%	30.15	3.97%
2001	985.95	19.10	1.9%	(45.75)	(4.6%)	(26.65)	(2.7%)	32.92	3.34%
2002	940.20	20.63	2.2%	(25.42)	(2.7%)	(4.79)	(0.5%)	45.32	4.82%
2003	914.78	13.88	1.5%	98.73	10.8%	112.61	12.3%	47.11	5.15%
2004	1013.51	10.39	1.0%	202.17	19.9%	212.56	21.0%	49.70	4.90%
2005	\$1,215.68	*	*	*	*	*	*	\$54.17	4.46%

Average Annual Growth Rates

20 YEAR	10.9%	-	-	-	-	-	-	10.3%	-
10 YEAR	13.2%	-	-	-	-	-	-	12.9%	-
5 YEAR	9.9%	-	-	-	-	-	-	12.4%	-
1 YEAR	19.9%	-	-	-	-	-	-	9.0%	-

(1) Harvard's endowment comprises over 10,700 separate funds. Each fund has been unitized and the separate funds hold "units of the endowment" as their value. Column one shows the value of units as of July 1.

(2) The total return percentage reported by the Harvard Management Company is slightly higher than the one listed above as it is calculated based on reinvestment of all earnings on a monthly basis.

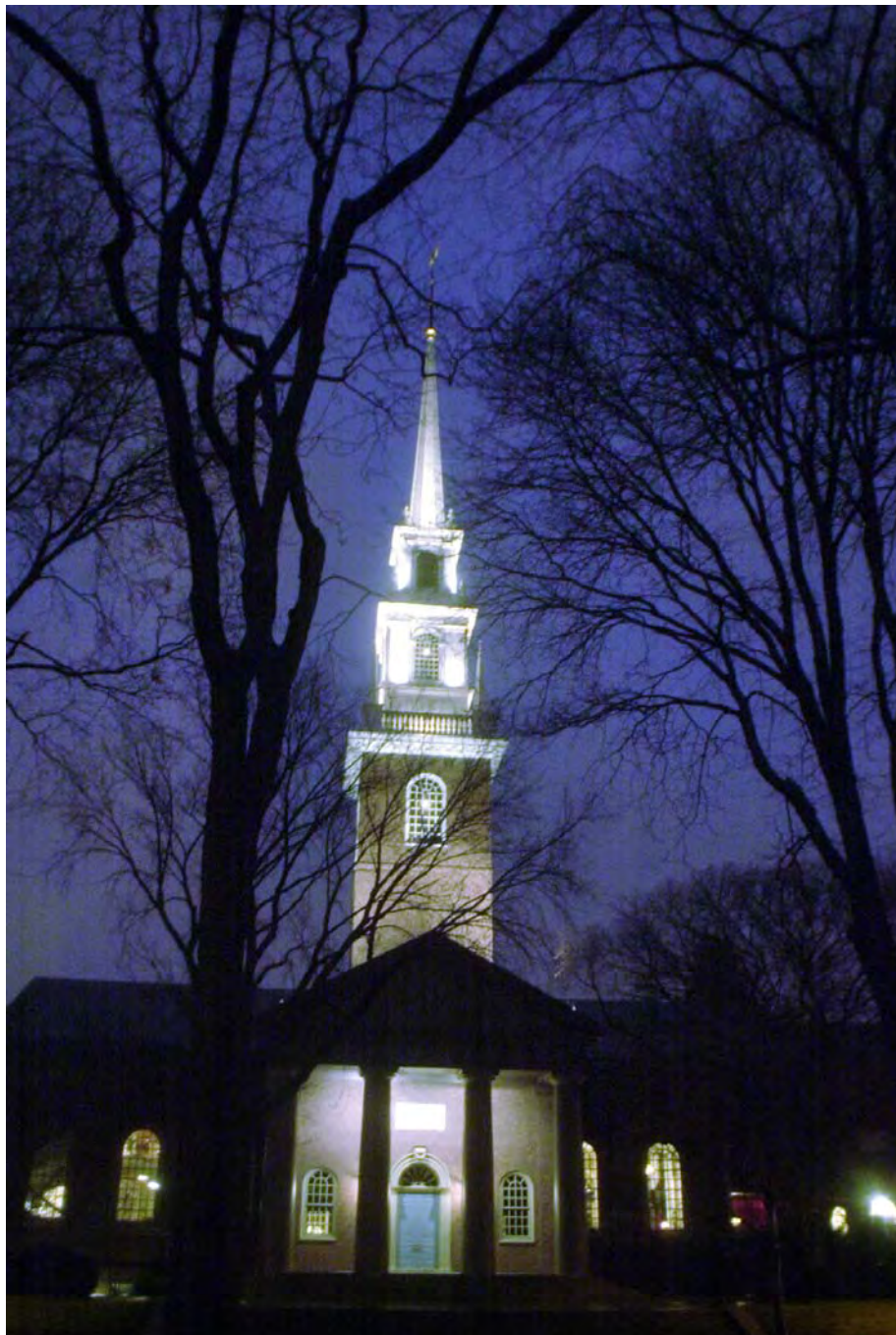
(3) As of July 1, from income earned the previous fiscal year.

(4) Distribution per unit (actual or effective) divided by beginning of year unit value (actual or effective).

(5) Net of the \$1.28 per unit fringe supplement, the FY97 payout is \$18.56, and the spending rate is 3.84%.

* Value not available at time of publication.

SOURCE: INTERNAL ENDOWMENT REPORTS



Harvard College is the oldest institution of higher learning in the United States. It was established in 1636 by vote of the Great and General Court of the Massachusetts Bay Colony and was named for its first benefactor, John Harvard of Charlestown, Massachusetts. Upon his death in 1638, the young minister left his library and half his estate to the new College. Founded 16 years after the arrival of the Pilgrims at Plymouth, the College has grown from nine students with a single master to an enrollment of more than 19,000 degree candidates, including undergraduates and students in 10 graduate and professional schools.

Cover Photo: Memorial Church
Kris Snibbe/Harvard News Office