

HARVARD UNIVERSITY
FACT BOOK
2005-2006





For user convenience, many Fact Book pages contain embedded Excel data tables. Double-click on the paperclip icons (such as the one shown here) to open these tables.

ORGANIZATION	Pages
Central Administration	2
Faculties and Allied Institutions	3
Research and Academic Centers	4 – 5
PEOPLE	Pages
Degree Student Enrollment	6 – 9
Degrees Conferred	10 – 13
International Students	14 – 15
Non-Degree Students and Fellowship Programs	16 – 17
Faculty	18 – 19
Staff	20 – 21
RESOURCES	Pages
Tuition, Fees, and Financial Aid	22 – 25
Sponsored Research	26 – 30
Library	31 – 32
FY2005 Income and Expenses	33 – 34
Physical Plant	35 – 36
Endowment	37 – 38

The Harvard University Fact Book is published by:
Office of Budgets, Financial Planning and Institutional Research
Holyoke Center 780, Cambridge, MA 02138

The address for the electronic version is:
<http://vpf-web.harvard.edu/factbook/>

If you would like more information about data contained in the Fact Book, contact:
JASON DEWITT, Data Resource Specialist

(617) 495-0591, E-mail: jason_dewitt@harvard.edu

RUTH LOESCHER, Institutional Research Coordinator

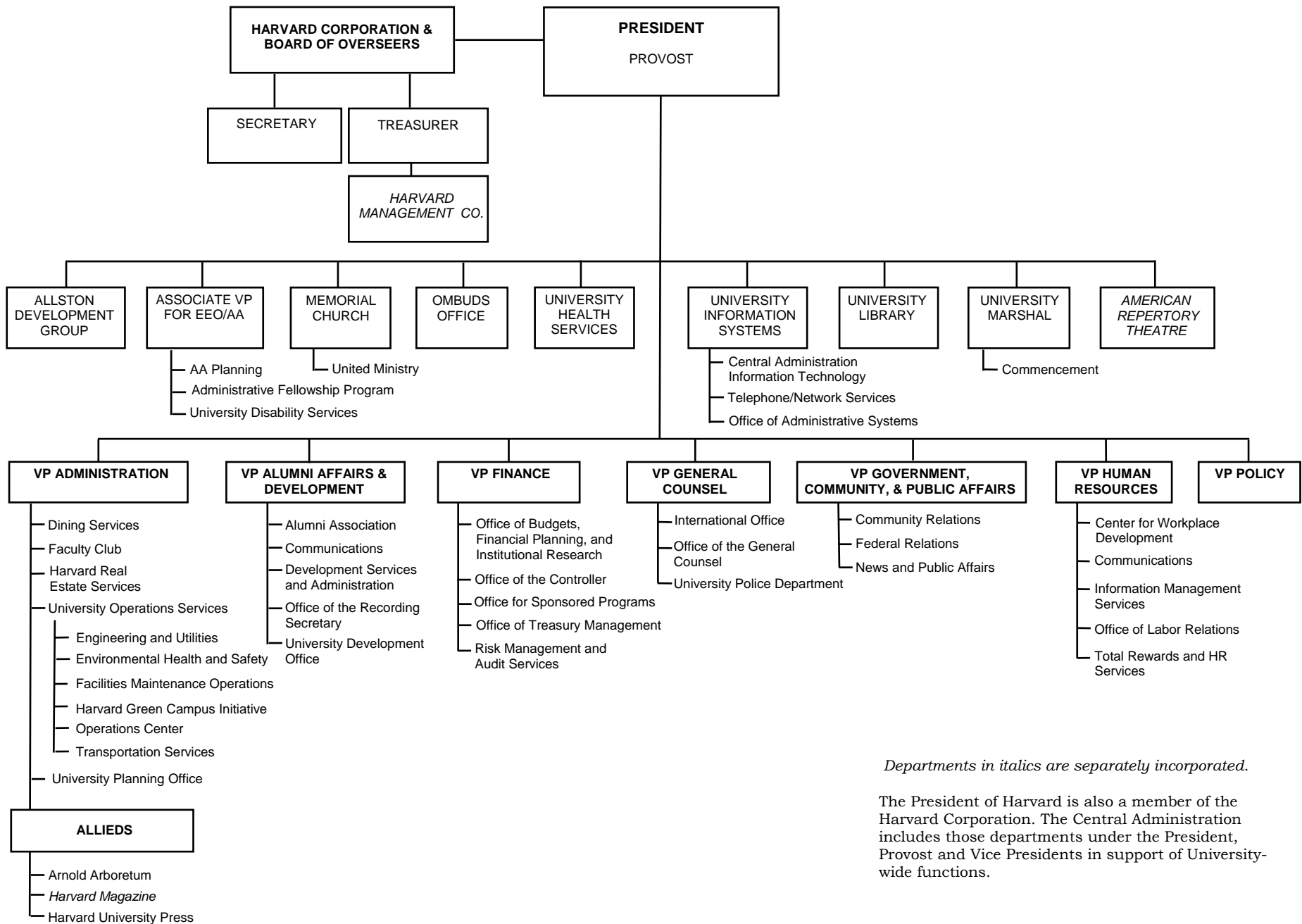
(617) 496-3568, E-mail: ruth_loescher@harvard.edu

NINA ZIPSER, Director of Institutional Research

(617) 384-9236, E-mail: nina_zipser@harvard.edu

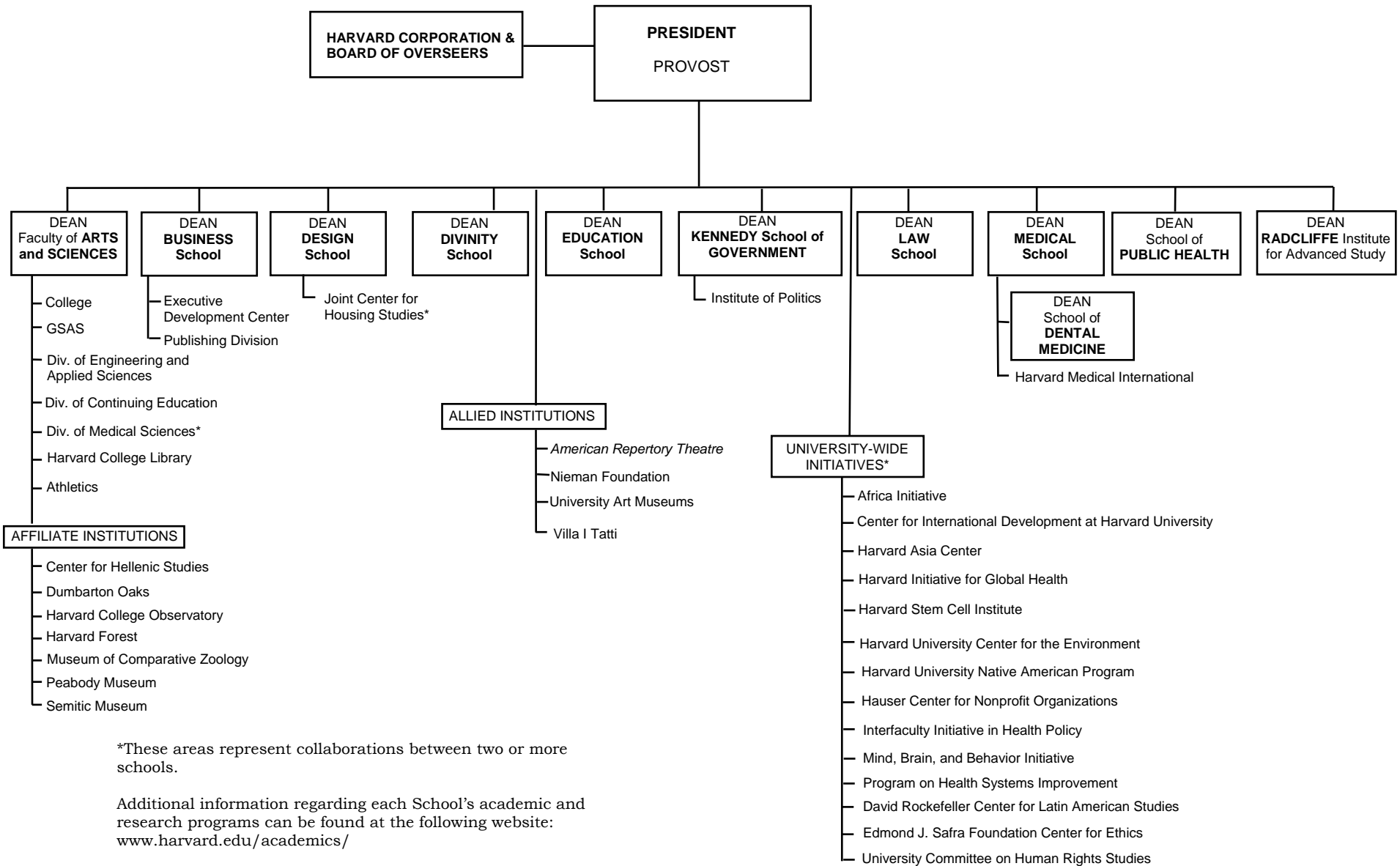
Changes to content after publication are reflected on the web version of the Fact Book.

Copyright 2006 by the President and Fellows of Harvard College



Departments in italics are separately incorporated.

The President of Harvard is also a member of the Harvard Corporation. The Central Administration includes those departments under the President, Provost and Vice Presidents in support of University-wide functions.



*These areas represent collaborations between two or more schools.

Additional information regarding each School's academic and research programs can be found at the following website:
www.harvard.edu/academics/

A list of research and academic centers affiliated with the Schools can be found on pages 4-5 of the Fact Book.
Departments in italics are separately incorporated.

Harvard University Research and Academic Centers ⁽¹⁾

FACULTY of ARTS and SCIENCES

Aga Khan Program for Islamic Architecture ⁽²⁾
 Bauer Center for Genomics Research
 Derek Bok Center for Teaching and Learning
 Center for American Political Studies
 Center for Brain Science*
 Center for Hellenic Studies
 Center for Jewish Studies
 Center for Middle Eastern Studies
 Center for Nanoscale Systems
 Center for Systems Neuroscience
 Davis Center for Russian and Eurasian Studies
 W.E.B. Dubois Institute for African and African-American Research
 Dumbarton Oaks
 Fairbank Center for East Asian Research
 Minda de Gunzburg Center for European Studies
 Harvard Asia Center**
 Harvard Smithsonian Center for Astrophysics
 Harvard Stem Cell Institute*
 Harvard University Center for the Environment**
 Harvard-MIT Data Center
 Harvard-Yenching Institute
 Humanities Center
 Institute for Quantitative Social Science
 Korea Institute
 Materials Research Science and Engineering Center
 Program for Evolutionary Dynamics
 Reischauer Institute of Japanese Studies
 David Rockefeller Center for Latin American Studies**
 Rowland Institute
 Technology and Entrepreneurship at Harvard
 Ukrainian Research Institute
 Charles Warren Center for Studies in American History
 Weatherhead Center for International Affairs
 Harvard Academy for International and Area Studies***
 Olin Institute for Strategic Studies***
 Program on U.S. - Japan Relations***

BUSINESS

California Research Center
 C. Roland Christensen Center for Teaching and Learning
 Global Initiative
 Asia-Pacific Research Center
 Europe Research Center
 India Research Center

Global Initiative (continued)
 Japan Research Office
 Latin America Research Center
 Health Care Initiative
 Institute for Strategy and Competitiveness*
 Leadership Initiative
 Arthur M. Rock Center for Entrepreneurship
 Social Enterprise Initiative

DESIGN

Center for Technology and Environment
 Joint Center for Housing Studies*
 Real Estate Academic Initiative*

DIVINITY

Center for the Study of World Religions
 Summer Leadership Institute
 Women's Studies in Religion Program

EDUCATION

The Civil Rights Project at Harvard*
 Harvard Family Research Project
 National Center for the Study of Adult Learning and Literacy
 The Principal's Center
 Project Zero
 The Race Achievement Gap Initiative*
 WIDE World Initiative

GOVERNMENT

The Roy and Lila Ash Institute for Democratic Governance and Innovation
 Robert and Renee Belfer Center for Science and International Affairs
 Carr Center for Human Rights Policy
 Center for International Development at Harvard University**
 Center for Public Leadership
 Hauser Center for Nonprofit Organizations**
 Joint Center for Housing Studies*
 Mossavar-Rahmani Center for Business and Government
 Edmond J. Safra Foundation Center for Ethics**
 Joan Shorenstein Center on the Press, Politics and Public Policy
 A. Alfred Taubman Center for State and Local Government ⁽³⁾
 Malcolm Wiener Center for Social Policy
 Women and Public Policy Program

(1) The Research and Academic Centers listed are those affiliated with the Schools.

(2) The Aga Khan Program for Islamic Architecture is a joint program with M.I.T.

(3) The Taubman Center includes the Rappaport Institute for Greater Boston.

* These Programs represent collaborations between two or more Schools.

** These Programs are housed in particular Schools, but are considered University-Wide initiatives.

*** These Programs are housed and administered within the Weatherhead Center

Harvard University Research and Academic Centers ⁽¹⁾

UNIVERSITY-WIDE INITIATIVES*

Africa Initiative
 Center for International Development at Harvard University
 Harvard Asia Center
 Harvard Initiative for Global Health
 Harvard Stem Cell Institute
 Harvard University Center for the Environment
 Harvard University Native American Program
 Hauser Center for Nonprofit Organizations
 Interfaculty Initiative in Health Policy
 Mind, Brain and Behavior Initiative
 Program on Health Systems Improvement
 David Rockefeller Center for Latin American Studies
 Edmond J. Safra Foundation Center for Ethics
 University Committee on Human Rights Studies

MEDICINE

Center for Biomedical Informatics*
 Center for Craniofacial Tissue Engineering
 Center for Genetics and Genomics, Harvard Medical School-Partners Healthcare*
 Center for Health and the Global Environment*
 Center for Hereditary Deafness*
 Center for Integration of Medicine and Innovative Technology
 Center for Magnetic Resonance*
 Center for Mental Health and Media*
 Center for Neurodegeneration and Repair
 Center for Neurofibromatosis and Allied Disorders*
 Center for Palliative Care
 Center of Excellence in Women's Health*
 Dana Farber/Harvard Cancer Center*
 Division for Research and Education in Complementary and Integrative Medical Therapies
 Division of AIDS*
 Division of Emergency Medicine
 Division of Health Care Policy Research and Education*
 Division of Health Sciences and Technology
 Division of Medical Ethics*
 Division of Nutrition*
 Division of Primary Care*
 Division of Service Learning
 Division of Sleep Medicine*
 Harvard Clinical Research Institute
 Harvard Skin Disease Research Center*

Harvard-Mahoney Institute of Neuroscience*
 Institute of Chemistry and Cell Biology and Initiative for Chemical Genetics*
 Institute of Proteomics
 JDRF Center for Immunological Tolerance in Type-1 Diabetes at Harvard Medical School ⁽²⁾
 New England Primate Research Center
 New England Regional Center of Excellence for Biodefense and Emerging Infectious Diseases*
 Program on Head and Neck Oncology

LAW

Berkman Center for Internet & Society
 Child Advocacy Program
 East Asian Legal Studies Program
 European Law Research Center
 Fund for Tax and Fiscal Policy Research
 Charles Hamilton Houston Institute for Race and Justice
 Human Rights Program
 Islamic Legal Studies Program
 Labor and Worklife Program
 Legal History Program
 John M. Olin Center for Law, Economics and Business
 Petrie-Flom Center for Health Law Policy, Biotechnology, and Ethics*
 Program on Corporate Governance
 Program on International Financial Systems
 Program on Negotiation
 Program on the Legal Profession

PUBLIC HEALTH

Center for Health Communication
 Francois-Xavier Bagnoud Center for Health and Human Rights
 Harvard Center for Cancer Prevention
 Harvard Center for Population and Development Studies
 Harvard Center for Society and Health
 Harvard Injury Control Center
 Harvard School of Public Health AIDS Initiative

RADCLIFFE INSTITUTE FOR ADVANCED STUDY

Radcliffe Institute Fellowship Program
 Arthur and Elizabeth Schlesinger Library on the History of Women in America

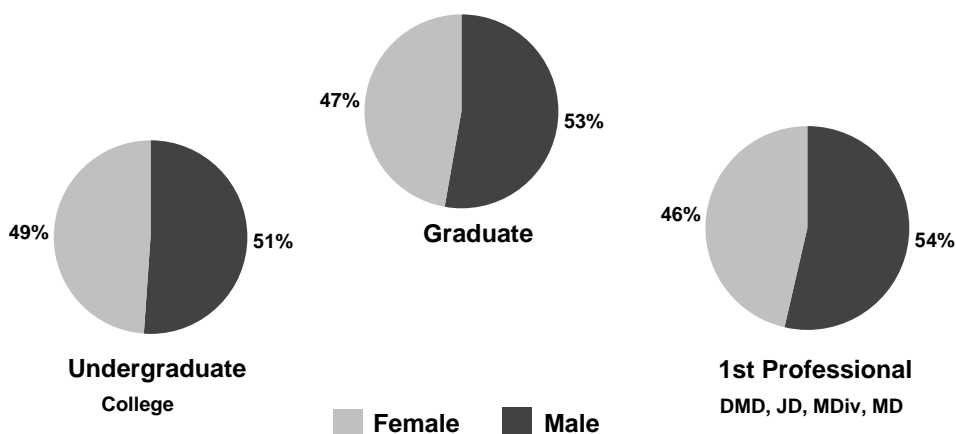
(1) The Research and Academic Centers listed are those affiliated with the Schools.

(2) JDRF is the Juvenile Diabetes Research Foundation.

* These Programs represent collaborations between two or more Schools.

Degree Student Head Count: Fall 2005 ⁽¹⁾ 
 Counts taken as of October 15, 2005

	<u>Male</u>	<u>Female</u>	<u>Total</u>	<u>Full-Time</u>	<u>Part-Time</u>	<u>Total</u>
College ⁽²⁾						
Freshmen	827	828	1,655	1,655	-	1,655
Sophomores	850	847	1,697	1,697	-	1,697
Juniors ⁽³⁾	883	777	1,660	1,660	-	1,660
Seniors	829	772	1,601	1,601	-	1,601
Subtotal	3,389	3,224	6,613	6,613	-	6,613
GSAS ⁽⁴⁾						
Division of Med. Sci.	275	300	575	575	-	575
All Other	1,829	1,349	3,178	3,156	22	3,178
Subtotal	2,104	1,649	3,753	3,731	22	3,753
Business	1,187	664	1,851	1,851	-	1,851
Dental ⁽⁵⁾	97	102	199	199	-	199
Design	307	272	579	543	36	579
Divinity	203	220	423	379	44	423
Education	243	732	975	815	160	975
Government	547	397	944	895	49	944
Law	1,087	861	1,948	1,948	-	1,948
Medical	401	383	784	784	-	784
Public Health	319	468	787	560	227	787
Extension						
Undergraduate	189	200	389	179	210	389
Graduate	296	303	599	94	505	599
Subtotal, All Degree Students	10,369	9,475	19,844	18,591	1,253	19,844
Adj. for Joint Degree Students	(41)	(24)	(65)	(65)	-	(65)
TOTAL	10,328	9,451	19,779	18,526	1,253	19,779



(1) Several Harvard schools enrolled students displaced by Hurricane Katrina during Fall 2005. These students are included in the counts for non-degree students on page 16.
 (2) Students in the Advanced Standing Program are counted as Juniors in their second year and Seniors in their third and fourth year.
 (3) Counts for Juniors include 26 undergraduates unclassified by year.
 (4) Candidates for the Ph.D. are enrolled in GSAS but may cross register for courses in other faculties.
 (5) Clinical specialty students in the Dental School are not included in totals. See page 16 for Dental Clinical Specialty counts.
 SOURCE: REGISTRAR OFFICES

Historical Enrollments: Fall 2000 - 2005 ⁽¹⁾

Degree Student Head Count by School

	<u>2000</u>	<u>2001</u>	<u>2002</u>	<u>2003</u>	<u>2004</u>	<u>2005</u>
College	6,660	6,650	6,649	6,597	6,562	6,613
GSAS ⁽²⁾	3,144	3,358	3,357	3,510	3,638	3,753
Business ⁽³⁾	1,458	1,847	1,836	1,832	1,823	1,851
Dental ⁽⁴⁾	214	213	207	202	205	199
Design	550	536	556	595	619	579
Divinity	480	451	443	455	428	423
Education	1,087	1,121	1,057	1,080	1,069	975
Government	840	881	896	924	956	944
Law	1,838	1,914	1,915	1,899	1,921	1,948
Medical	756	777	787	780	766	784
Public Health	823	808	825	737	825	787
Extension						
Undergraduate	437	435	401	403	385	389
Graduate	631	626	671	676	592	599
Subtotal, All Degree Students	18,918	19,617	19,600	19,690	19,789	19,844
Adj. for Joint Degree Students	(71)	(78)	(64)	(52)	(58)	(65)
TOTAL	18,847	19,539	19,536	19,638	19,731	19,779
Enrollment Level ⁽⁵⁾	<u>2000</u>	<u>2001</u>	<u>2002</u>	<u>2003</u>	<u>2004</u>	<u>2005</u>
Undergraduates						
Full-Time	6,816	6,831	6,822	6,767	6,722	6,792
Part-Time	281	254	228	233	225	210
Subtotal	7,097	7,085	7,050	7,000	6,947	7,002
Graduate Students						
Full-Time	8,116	8,865	8,818	8,993	9,082	9,071
Part-Time	1,004	952	992	1,004	1,059	1,026
Subtotal	9,120	9,817	9,810	9,997	10,141	10,097
1st Professional Degree ⁽⁶⁾						
Full-Time	2,677	2,690	2,722	2,668	2,680	2,728
Part-Time	24	25	18	25	21	17
Subtotal	2,701	2,715	2,740	2,693	2,701	2,745
TOTAL	18,918	19,617	19,600	19,690	19,789	19,844

(1) Several Harvard schools enrolled students displaced by Hurricane Katrina during Fall 2005. These students are included in the counts for non-degree students on page 16.

(2) Candidates for the Ph.D. are enrolled in GSAS but may cross register for courses in other faculties.

(3) Between January 1997 and January 2001, the Business School instituted a second matriculation date for its MBA Program. These students are not reflected in the counts above. Enrollments were 341 in January 2001.

(4) These figures exclude postdoctoral students enrolled in a clinical specialty. See page 16 for Dental Clinical Specialty counts.

(5) Includes degree candidates from the Extension School. Not adjusted for joint degree students.

(6) 1st-Professional degrees include DMD, JD, MDiv, and MD.

SOURCE: REGISTRAR OFFICES

Student Enrollment by Degree: Fall 2005 ⁽¹⁾ 

		Male		Female		Total
		Full-Time	Part-Time	Full-Time	Part-Time	
College	A.B., S.B.	3,389	-	3,224	-	6,613
GSAS	A.M., S.M.	91	15	76	7	189
	Ph.D.	1,998	-	1,566	-	3,564
Business	M.B.A.	1,169	-	653	-	1,822
	D.B.A.	18	-	11	-	29
Dental	D.M.D.	64	-	73	-	137
	M.M.Sc.	25	-	16	-	41
	D.M.Sc.	8	-	13	-	21
Design	M.Arch.	155	17	134	14	320
	M.A.U.D./M.L.A.U.D.	36	-	13	-	49
	M.Des	31	-	23	-	54
	M.L.A.	25	2	45	1	73
	M.U.P.	20	-	23	2	45
	Dr.Des	21	-	17	-	38
Divinity	M.Div.	65	9	69	8	151
	M.T.S.	80	12	108	12	212
	Th.M.	5	3	4	-	12
	Th.D.	29	-	19	-	48
Education	Ed.M.	114	18	381	85	598
	Ed.D.	91	20	221	37	369
	C.A.S.	-	-	8	-	8
Government	M.P.A. ⁽²⁾	216	21	103	8	348
	M.P.A./I.D.	83	2	55	2	142
	M.P.P.	202	8	204	8	422
	M.U.P.	7	-	6	-	13
	Ph.D.	8	-	11	-	19
Law	J.D.	961	-	757	-	1,718
	LL.M.	97	-	75	-	172
	S.J.D.	29	-	29	-	58
Medical	M.D.	372	-	367	-	739
	M.M.Sc.	29	-	16	-	45
Public Health	M.P.H.	83	62	61	57	263
	M.S.	50	44	127	22	243
	D.P.H.	5	3	6	5	19
	D.S.	62	10	166	24	262
Extension	A.A., A.L.B.	94	95	85	115	389
	A.L.M., Grad. Cert.	43	253	51	252	599
TOTAL ⁽³⁾		9,775	594	8,816	659	19,844

(1) Several Harvard schools enrolled students displaced by Hurricane Katrina during Fall 2005. These students are included in the counts for non-degree students on page 16.

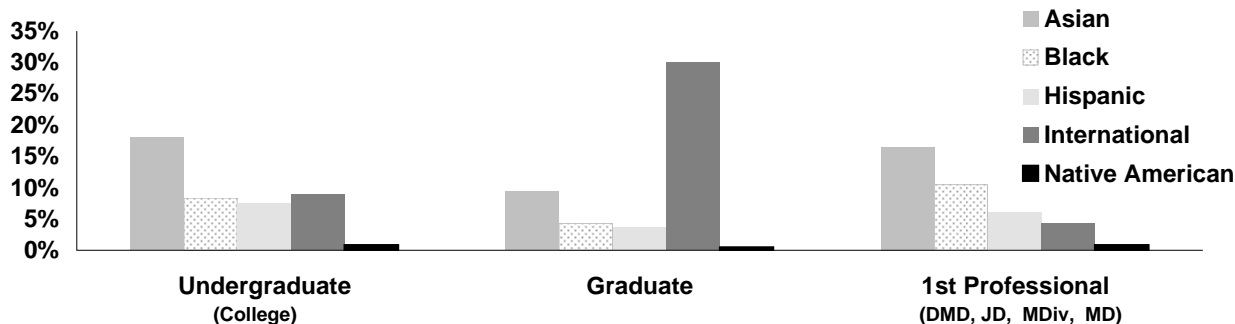
(2) M.P.A. Program includes the two-year M.P.A. program and the one-year M.P.A. Mid-Career program.

(3) Not adjusted for joint degree students.

Degree Student Enrollment by Ethnicity: Fall 2005 ⁽¹⁾

	College	GSAS	Business	Dental	Design	Divinity	Education	Government	Law	Medical	Public Health	Extension	Total
Asian/Pacific Islander													
Male	504	130	110	14	34	10	20	34	97	102	43	38	1,136
Female	688	165	103	36	52	11	78	35	115	100	48	37	1,468
Subtotal	1,192	295	213	50	86	21	98	69	212	202	91	75	2,604
Percent	18%	8%	12%	25%	15%	5%	10%	7%	11%	26%	12%	8%	13.1%
Black/Non-Hispanic													
Male	229	44	56	5	6	10	24	23	77	38	12	32	556
Female	324	88	39	4	1	12	53	22	101	55	23	16	738
Subtotal	553	132	95	9	7	22	77	45	178	93	35	48	1,294
Percent	8%	4%	5%	5%	1%	5%	8%	5%	9%	12%	4%	5%	6.5%
Hispanic													
Male	245	62	22	7	9	12	14	22	55	32	10	27	517
Female	256	59	24	5	9	9	39	30	43	30	21	17	542
Subtotal	501	121	46	12	18	21	53	52	98	62	31	44	1,059
Percent	8%	3%	2%	6%	3%	5%	5%	6%	5%	8%	4%	4%	5.3%
International Students													
Male	344	684	415	18	118	26	30	247	145	19	120	59	2,225
Female	247	437	209	18	75	16	79	125	126	19	106	67	1,524
Subtotal	591	1,121	624	36	193	42	109	372	271	38	226	126	3,749
Percent	9%	30%	34%	18%	33%	10%	11%	39%	14%	5%	29%	13%	18.9%
Native American													
Male	27	5	4	-	3	1	2	5	8	6	1	2	64
Female	28	10	2	-	2	-	2	5	2	6	3	1	61
Subtotal	55	15	6	-	5	1	4	10	10	12	4	3	125
Percent	1%	0%	0%	0%	1%	0%	0%	1%	1%	2%	1%	0%	0.6%
White/Non-Hispanic													
Male	1,751	809	457	47	114	134	102	167	547	197	102	293	4,720
Female	1,446	629	234	33	102	157	326	129	371	169	198	342	4,136
Subtotal	3,197	1,438	691	80	216	291	428	296	918	366	300	635	8,856
Percent	48%	38%	37%	40%	37%	69%	44%	31%	47%	47%	38%	64%	44.6%
Unknown/Other													
Male	289	370	123	6	23	10	51	49	158	7	31	34	1,151
Female	235	261	53	6	31	15	155	51	103	4	69	23	1,006
Subtotal	524	631	176	12	54	25	206	100	261	11	100	57	2,157
Percent	8%	17%	10%	6%	9%	6%	21%	11%	13%	1%	13%	6%	10.9%
TOTAL ⁽²⁾	6,613	3,753	1,851	199	579	423	975	944	1,948	784	787	988	19,844

Percentage of Minority and International Students by Enrollment Level



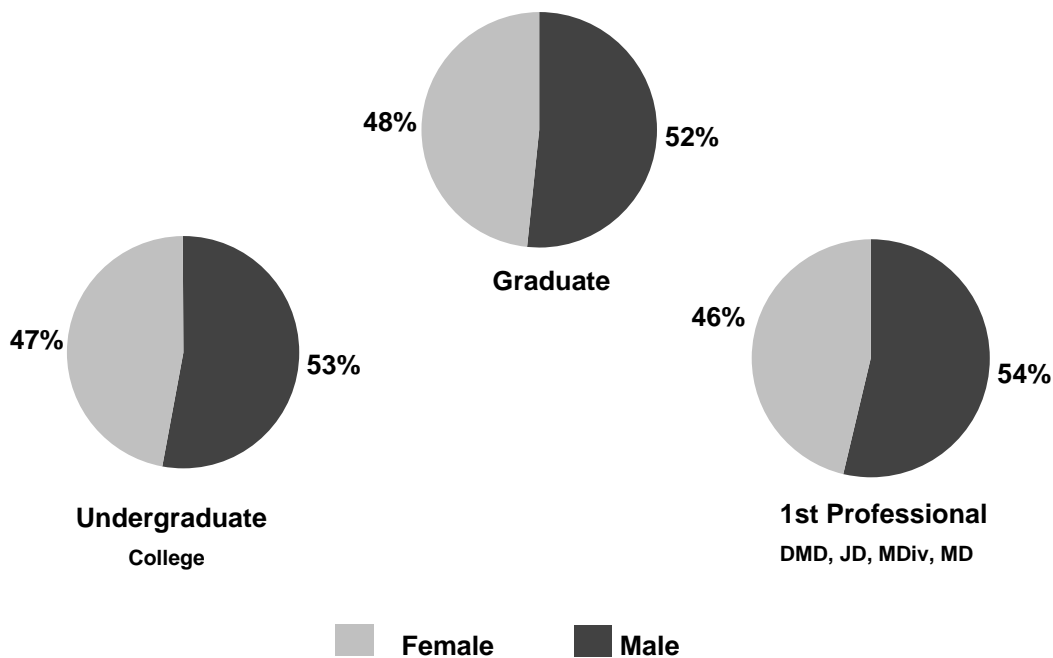
(1) Several Harvard schools enrolled students displaced by Hurricane Katrina during Fall 2005. These students are included in the counts for non-degree students on page 16.

(2) Not adjusted for joint degree students.

Degrees Conferred by School ⁽¹⁾

Academic Year 2004-2005

	<u>Male</u>	<u>Female</u>	<u>Total</u>
College	890	799	1,689
GSAS	462	348	810
Business	578	312	890
Dental	36	21	57
Design	138	118	256
Divinity	76	90	166
Education	184	515	699
Government	327	235	562
Law	398	313	711
Medical	86	87	173
Public Health	198	231	429
Extension			
Undergraduate	57	81	138
Graduate	137	159	296
TOTAL	3,567	3,309	6,876



(1) Not adjusted for joint degree students.
SOURCE: REGISTRAR OFFICES

Degrees Conferred by Degree: Academic Year 2004-2005 ⁽¹⁾ 

		Male	Female	Total
College	A.B.	881	791	1,672
	S.B.	9	8	17
GSAS	A.M.	171	160	331
	S.M.	43	23	66
	Ph.D.	248	165	413
Business	M.B.A.	575	309	884
	D.B.A.	3	3	6
Dental	D.M.D.	19	15	34
	M.M.Sc.	9	3	12
	D.M.Sc.	8	3	11
Design	M.Arch.	57	30	87
	M.A.U.D./M.L.A.U.D.	19	9	28
	M.Des.	29	26	55
	M.L.A.	14	33	47
	M.U.P.	14	18	32
	Dr.Des.	5	2	7
Divinity	M.Div.	23	35	58
	M.T.S.	46	48	94
	Th.M.	3	1	4
	Th.D.	4	6	10
Education	Ed.M.	169	474	643
	Ed.D.	14	39	53
	C.A.S.	1	2	3
Government	M.P.A. (1 YEAR)	136	72	208
	M.P.A. (2 YEAR)	53	37	90
	M.P.A./I.D.	38	26	64
	M.P.P.	96	98	194
	M.U.P.	4	2	6
Law	J.D.	307	240	547
	LL.M.	89	72	161
	S.J.D.	2	1	3
Medical	M.D.	73	74	147
	M.M.Sc.	13	13	26
Public Health	M.P.H.	120	93	213
	M.S.	61	101	162
	D.P.H.	2	-	2
	D.S.	15	37	52
Extension	A.A.	9	11	20
	A.L.B.	48	70	118
	A.L.M.	56	56	112
	Grad. Cert.	81	103	184
	TOTAL	3,567	3,309	6,876

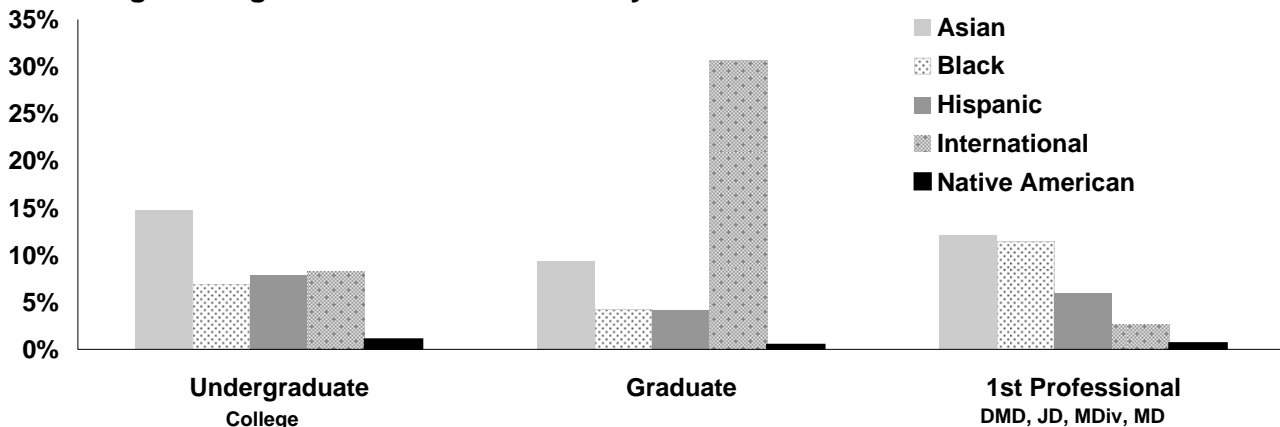
(1) Not adjusted for joint degree students.

SOURCE: REGISTRAR OFFICES

Degrees Conferred by Student Ethnicity: Academic Year 2004-2005 ⁽¹⁾

	College	GSAs	Business	Dental	Design	Divinity	Education	Government	Law	Medical	Public Health	Extension	Total
Asian/Pacific Islander													
Male	122	34	53	6	5	4	15	19	25	21	16	16	336
Female	127	38	58	7	13	8	66	17	27	13	30	18	422
Subtotal	249	72	111	13	18	12	81	36	52	34	46	34	758
Percent	15%	9%	12%	23%	7%	7%	12%	6%	7%	20%	11%	8%	11.0%
Black/Non-Hispanic													
Male	61	9	33	1	3	9	9	8	20	9	5	6	173
Female	56	11	22	-	5	5	25	18	39	14	16	15	226
Subtotal	117	20	55	1	8	14	34	26	59	23	21	21	399
Percent	7%	2%	6%	2%	3%	8%	5%	5%	8%	13%	5%	5%	5.8%
Hispanic													
Male	73	16	13	1	5	5	10	26	19	7	9	13	197
Female	60	8	5	-	2	6	24	25	12	4	9	18	173
Subtotal	133	24	18	1	7	11	34	51	31	11	18	31	370
Percent	8%	3%	2%	2%	3%	7%	5%	9%	4%	6%	4%	7%	5.4%
International Students													
Male	73	127	197	8	53	3	27	142	90	5	89	41	855
Female	66	81	101	5	55	6	44	75	72	6	61	44	616
Subtotal	139	208	298	13	108	9	71	217	162	11	150	85	1,471
Percent	8%	26%	33%	23%	42%	5%	10%	39%	23%	6%	35%	20%	21.4%
Native American													
Male	8	2	2	-	-	1	-	2	1	-	1	3	20
Female	10	1	1	-	-	1	3	1	2	1	3		23
Subtotal	18	3	3	-	-	2	3	3	3	1	4	3	43
Percent	1%	0%	0%	0%	0%	1%	0%	1%	0%	1%	1%	1%	0.6%
White/Non-Hispanic													
Male	417	176	218	18	63	49	92	108	183	41	65	104	1,534
Female	348	119	110	8	40	59	259	74	124	48	77	132	1,398
Subtotal	765	295	328	26	103	108	351	182	307	89	142	236	2,932
Percent	45%	36%	37%	46%	40%	65%	50%	32%	43%	51%	33%	54%	42.6%
Unknown/Other													
Male	136	98	62	2	9	5	31	22	60	3	13	11	452
Female	132	90	15	1	3	5	94	25	37	1	35	13	451
Subtotal	268	188	77	3	12	10	125	47	97	4	48	24	903
Percent	16%	23%	9%	5%	5%	6%	18%	8%	14%	2%	11%	6%	13.1%
TOTAL	1,689	810	890	57	256	166	699	562	711	173	429	434	6,876

Percentage of Degrees Conferred to Minority and International Students



(1) Not adjusted for joint degree students.
SOURCE: REGISTRAR OFFICES

Degrees Conferred: Academic Year 2000-2005 ⁽¹⁾

	Academic Year	2000	2001	2002	2003	2004	2005
College	A.B.	1,675	1,694	1,656	1,686	1,658	1,672
	S.B.	14	8	9	5	13	17
	Subtotal	1,689	1,702	1,665	1,691	1,671	1,689
GSAS	A.M.	286	317	325	363	349	331
	M.E.	-	1	-	1	1	-
	M.F.S.	-	1	3	-	-	-
	S.M.	37	44	65	58	60	66
	Ph.D.	412	387	383	392	444	413
	Subtotal	735	750	776	814	854	810
Business	M.B.A.	876	848	916	887	894	884
	D.B.A.	4	5	4	3	4	6
	Subtotal	880	853	920	890	898	890
Dental	D.M.D.	28	32	32	36	33	34
	M.M.S.	12	15	14	15	12	12
	M.P.H.	-	2	-	-	-	-
	D.M.S.	5	8	10	3	3	11
	Subtotal	45	57	56	54	48	57
Design	M. Arch.	89	96	98	91	95	87
	M.A.U.D./M.L.A.U.D.	22	25	24	25	20	28
	M.Des.	39	45	51	51	67	55
	M.L.A.	28	34	24	27	29	47
	M.U.P.	14	18	14	15	17	32
	Dr.Des.	7	9	11	8	8	7
	Subtotal	199	227	222	217	236	256
Divinity	M.Div.	53	63	38	50	44	58
	M.T.S.	103	95	102	83	102	94
	Th.M.	7	7	4	7	5	4
	Th.D.	4	6	8	3	6	10
Subtotal	167	171	152	143	157	166	
Education	Ed.M.	540	603	603	589	617	643
	Ed.D.	58	47	78	59	60	53
	C.A.S.	12	6	3	4	4	3
	Subtotal	610	656	684	652	681	699
Government	M.P.A. (1 Year)	202	191	202	209	225	208
	M.P.A. (2 Year)	94	72	84	86	89	90
	M.P.A./I.D.	-	49	56	77	63	64
	M.P.P.	143	150	158	163	138	194
	M.C.R.P./M.U.P.	6	4	5	7	10	6
	D.P.A.	-	1	-	-	-	-
Subtotal	445	467	505	542	525	562	
Law	J.D.	557	543	554	575	551	547
	LL.M.	134	130	144	130	157	161
	S.J.D.	13	10	7	14	8	3
	Subtotal	704	683	705	719	716	711
Medicine	M.D.	162	162	157	165	177	147
	M.M.Sc.	19	11	13	24	24	26
	Subtotal	181	173	170	189	201	173
Public Health	M.P.H.	167	205	214	211	209	213
	M.S., M.O.H.	133	147	134	152	137	162
	D.P.H., D.S.	52	39	42	65	39	54
	Subtotal	352	391	390	428	385	429
Extension	A.A.	12	10	16	20	13	20
	A.L.B.	135	126	134	113	120	118
	A.L.M.	77	88	84	82	91	112
	Grad. Cert.	301	341	312	245	233	184
	Subtotal	525	565	546	460	457	434
	TOTAL	6,532	6,695	6,791	6,799	6,829	6,876

(1) Not adjusted for joint degree students.

SOURCE: REGISTRAR OFFICES

International Enrollment: Fall 2005 ⁽¹⁾ 

	Africa	Asia	Europe	Latin America	Middle East	North America	Oceania	Stateless	Total
College	45	144	186	24	28	140	14	-	581
GSAS	19	541	398	61	82	143	36	-	1,280
Business	21	175	189	60	25	96	18	-	584
Dental	2	11	4	-	7	7	-	-	31
Design	2	102	45	7	8	21	3	-	188
Divinity	1	21	4	-	2	5	-	-	33
Education	4	43	12	12	5	19	2	1	98
Government	21	120	79	36	26	37	14	1	334
Law	16	74	64	26	20	42	12	-	254
Medical	3	6	3	3	1	15	1	-	32
Public Health	23	103	25	6	11	29	3	-	200
Extension	5	17	13	14	-	5	-	-	54
TOTAL	162	1,357	1,022	249	215	559	103	2	3,669

(1) Counts include full-time degree and non-degree students only, which include transfer and special students, visiting undergraduates, and Extension School enrollees. Counts exclude executive education and professional development programs.

SOURCE: INTERNATIONAL OFFICE

Historical Enrollment of International Students: Fall 2000 - 2005⁽¹⁾



	Fall					
	2000	2001	2002	2003	2004	2005
Africa						
Ghana	13	16	15	19	17	17
Kenya	16	17	14	22	23	18
Nigeria	21	34	22	24	20	25
South Africa	28	26	30	23	23	22
Zimbabwe	8	12	18	18	13	16
Other	45	59	49	48	52	64
Subtotal	131	164	148	154	148	162
Asia						
China	270	318	337	354	361	378
India	104	120	112	133	167	189
Japan	158	163	134	127	137	135
South Korea	213	212	207	191	218	244
Taiwan	102	81	86	82	103	113
Other	270	286	285	279	281	298
Subtotal	1,117	1,180	1,161	1,166	1,267	1,357
Europe						
Bulgaria	46	43	41	42	48	51
France	74	67	83	78	68	76
Germany	120	119	124	132	137	159
Italy	48	49	51	54	46	53
Russia	58	50	47	47	45	51
United Kingdom	158	157	174	180	191	177
Other	437	454	451	463	483	455
Subtotal	941	939	971	996	1,018	1,022
Latin America						
Argentina	57	61	60	55	48	35
Brazil	61	65	68	63	63	64
Chile	33	24	26	26	33	32
Colombia	48	40	50	31	43	40
Peru	24	27	18	20	22	20
Other	97	92	86	65	60	58
Subtotal	320	309	308	260	269	249
Middle East						
Cyprus	12	7	6	11	15	18
Israel	72	71	75	71	76	71
Lebanon	9	16	8	12	15	13
Saudi Arabia	11	9	9	9	10	10
Turkey	75	64	79	71	74	71
Other	32	38	31	39	31	32
Subtotal	211	205	208	213	221	215
North America						
Canada	434	464	492	444	467	481
Mexico	101	95	85	71	74	78
Subtotal	535	559	577	515	541	559
Oceania						
Australia	61	73	66	70	67	82
Fiji	-	-	-	-	-	1
New Zealand	22	21	19	21	15	20
Subtotal	83	94	85	91	82	103
Stateless	-	-	2	-	-	2
TOTAL	3,338	3,450	3,460	3,395	3,546	3,669

Africa Other: Benin, Botswana, Burkina Faso, Cameroon, Congo, Cote D'Ivoire, Egypt, Ethiopia, Gambia, Lesotho, Mauritius, Morocco, Mozambique, Rwanda, Senegal, Sierra Leone, Sudan, Tanzania, Togo, Uganda, Zambia.

Asia Other: Bangladesh, Burma (Myanmar), Hong Kong, Indonesia, Kazakhstan, Kyrgyzstan, Malaysia, Mongolia, Nepal, Pakistan, Philippines, Singapore, Sri Lanka, Thailand, Uzbekistan, Vietnam.

Europe Other: Albania, Armenia, Austria, Azerbaijan, Belarus, Belgium, Bosnia and Herzegovina, Croatia, Czech Republic, Denmark, Estonia, Finland, Georgia, Greece, Hungary, Iceland, Ireland, Latvia, Liechtenstein, Lithuania, Luxembourg, Macedonia, Moldova, Netherlands, Norway, Poland, Portugal, Romania, Slovakia, Slovenia, Spain, Sweden, Switzerland, Ukraine, Yugoslavia (Former).

Latin America Other: Bahamas, Barbados, Bermuda, Bolivia, Costa Rica, Dominica, Dominican Republic, El Salvador, Guatemala, Honduras, Jamaica, Nicaragua, Panama, Saint Lucia, Trinidad and Tobago, Uruguay, Venezuela.

Middle East Other: Bahrain, Gaza Strip, Iran, Iraq, Jordan, Kuwait, Qatar, Syria, United Arab Emirates, West Bank.

(1) Counts include full-time degree and non-degree students only, which includes transfer and special students, visiting undergraduates, and Extension School enrollees. Counts exclude executive education and professional development programs. Countries listed are for Fall 2005. Information on countries for enrollments in prior years can be obtained from the International Office.

SOURCE: INTERNATIONAL OFFICE

Summer School Enrollment: Summer 2000 - 2005

Harvard Students by School ⁽¹⁾

	2000	2001	2002	2003	2004	2005
College	313	330	322	348	334	435
GSAS	55	62	61	56	55	76
Education	14	12	5	8	10	10
Extension	296	291	298	307	365	354
Other Harvard Schools	19	22	17	10	21	11
Subtotal	697	717	703	729	785	886

Other Students by Educational Level ⁽²⁾

Secondary School	1,244	1,190	1,320	1,130	1,020	1,156
Graduate	1,667	1,642	1,522	1,748	1,593	1,656
Undergraduate	1,101	1,067	1,050	965	1,122	1,109
Unknown	335	279	299	72	89	71
Subtotal	4,347	4,178	4,191	3,915	3,824	3,992
TOTAL	5,044	4,895	4,894	4,644	4,609	4,878

Non-Degree Headcount: Fall 2000 - 2005 ⁽³⁾

	2000	2001	2002	2003	2004	2005		
						Male	Female	Total
College	-	-	-	-	-	12	24	36
GSAS	215	144	204	197	188	102	118	220
Dental ⁽⁴⁾	53	31	40	45	38	20	21	41
Design	1	12	3	3	2	3	3	6
Divinity	30	45	18	11	16	3	4	7
Education	71	84	103	84	95	16	73	89
Government	15	13	8	9	10	6	2	8
Law	43	38	47	54	40	44	24	68
Medical	-	-	-	-	-	-	1	1
Public Health	-	3	1	-	-	7	15	22
Extension ⁽⁵⁾	4,933	4,483	4,945	4,758	4,470	2,145	2,530	4,675
TOTAL	5,361	4,853	5,369	5,161	4,859	2,358	2,815	5,173

(1) Counts include matriculating Harvard students enrolled in Harvard courses during the summer session.

(2) Beginning with 2004, high school students are counted as undergraduates instead of Secondary School students.

(3) Non-degree enrollments include all students enrolled on October 15 in at least one class that is creditable toward a degree or formal award.

2005 counts include 58 graduate students and 36 College students displaced by Hurricane Katrina.

(4) Includes post-doctorates in clinical specialty certification programs.

(5) Counts are for the first semester only. This significantly undercounts yearly enrollment in the Extension School as a roughly equal number of new students might be enrolled in the second semester.

Fellowship Programs: Academic Year 2005 - 2006

Fellows	Men	Women	Total
Allied Institutions			
Arnold Arboretum	7	7	14
Nieman Fellows	12	11	23
Ethics and the Professions	6	6	12
South African Fellows	4	2	6
Villa I Tatti ⁽¹⁾	10	9	19
FAS			
Center for Hellenic Studies	8	4	12
Dumbarton Oaks	15	8	23
WCFIA Fellows ⁽²⁾	35	28	63
Visiting Fellows	46	53	99
Rowland Institute	9	1	10
Bauer Center for Genomic Research	9	2	11
Warren Fellows	4	3	7
W.E.B. DuBois Institute Fellows	12	7	19
Design			
Loeb Fellows	3	6	9
Divinity			
Merrill Fellows	3	2	5
Ministers in Vicinity	1	-	1
Government			
Center for Business and Government	34	8	42
Institute of Politics Fellows	3	3	6
Mason Fellows	45	15	60
National Security Fellows	22	1	23
Shorenstein Center	3	2	5
Women and Public Policy Program	1	6	7
Law			
Olin Fellows	13	3	16
The Graduate Program	23	10	33
Public Health			
Ethical Issues in Int'l Health Research	7	7	14
Post Doctorate Fellows	105	105	210
Takemi Program	3	6	9
Bell Fellows	-	6	6
Fogarty Fellows	4	4	8
Yerby Fellowship Program	-	8	8
Kellogg Scholars in Health Disparities	-	1	1
Radcliffe Institute for Advanced Study			
RIAS Fellows	11	40	51
Subtotal	458	374	832
Medical and Dental School			
Research and Clinical Fellows ⁽³⁾			
	Men	Women	Total
Medical School - Quad	420	274	694
Medical School - Hospital	3,777	2,907	6,684
Dental School - Quad	14	17	31
Dental School - Hospital	26	9	35
Subtotal	4,237	3,207	7,444
TOTAL FELLOWS	4,695	3,581	8,276

(1) Includes full-year Fellows, three-month Fellows, and Readers in Renaissance Studies.

(2) The Weatherhead Center for International Affairs includes Harvard Academy for International and Area Studies, Olin Institute for Strategic Studies, the Program on U.S. Japan Studies, the Fellows Program, and the Project on Justice, Welfare and Economics.

(3) The counts for the Medical and Dental schools include both hospital and quad-based post-doctoral Fellows, Interns and Residents.

Quad-based fellows are located in Medical and Dental School facilities and are primarily research oriented.

Hospital-based fellows are located in affiliated hospitals and work in both research and clinical settings.

SOURCE: INTERNAL SURVEY

University Faculty: Fall 2005 ⁽¹⁾

	Head Count			Full-time
	Male	Female	Total	Equivalent
Arts and Sciences				
Professor				
Tenured ⁽²⁾	388	90	478	466.7
Non-Tenured ⁽³⁾	15	6	21	15.8
Associate Professor	47	22	69	69.0
Assistant Professor	90	53	143	141.0
Lecturers & Instructors ⁽⁴⁾	164	161	325	194.2
Other Faculty ⁽⁵⁾	46	28	74	55.6
TOTAL	750	360	1,110	942.3

	Head Count			Full-time
	Male	Female	Total	Equivalent
Design				
Professor				
Tenured	23	4	27	21.7
Non-Tenured ⁽³⁾	-	-	-	-
Associate Professor ⁽⁶⁾	12	3	15	12.6
Assistant Professor	4	2	6	6.0
Lecturers & Instructors ⁽⁴⁾	14	8	22	7.1
Other Faculty ⁽⁵⁾	30	17	47	14.5
TOTAL	83	34	117	61.9

	Head Count			Full-time
	Male	Female	Total	Equivalent
Education				
Professor				
Tenured	14	9	23	22.6
Non-Tenured ⁽³⁾	6	-	6	6.0
Associate Professor	1	3	4	4.0
Assistant Professor	1	5	6	6.0
Lecturers & Instructors ⁽⁴⁾	9	20	29	21.1
Other Faculty ⁽⁵⁾	-	1	1	0.5
TOTAL	31	38	69	60.2

	Head Count			Full-time
	Male	Female	Total	Equivalent
Law				
Professor				
Tenured ⁽²⁾	62	14	76	71.8
Non-Tenured	n/a	n/a	n/a	n/a
Associate Professor	n/a	n/a	n/a	n/a
Assistant Professor	4	1	5	5.0
Lecturers & Instructors ⁽⁴⁾	36	26	62	30.0
Other Faculty ⁽⁵⁾	32	12	44	19.3
TOTAL	134	53	187	126.0

	Head Count			Full-time
	Male	Female	Total	Equivalent
Medical Quad-Based				
Professor				
Tenured	73	13	86	84.9
Non-Tenured ⁽³⁾	12	4	16	14.3
Associate Professor	15	6	21	21.0
Assistant Professor	26	12	38	36.9
Lecturers & Instructors ⁽⁴⁾	43	30	73	69.4
Other Faculty ⁽⁵⁾	27	27	54	52.9
TOTAL	196	92	288	279.2

	Head Count			Full-time
	Male	Female	Total	Equivalent
Other Academic Units ⁽⁷⁾				
Professor				
Tenured	1	2	3	2.5
Non-Tenured ⁽³⁾	-	-	-	-
Other Faculty	7	4	11	6.8
TOTAL	8	6	14	9.3

	Head Count			Full-time
	Male	Female	Total	Equivalent
Business				
Professor				
Tenured ⁽²⁾	73	14	87	83.4
Non-Tenured ⁽³⁾	18	2	20	18.5
Associate Professor	30	6	36	36.0
Assistant Professor	36	22	58	57.3
Lecturers & Instructors ⁽⁴⁾	9	3	12	10.3
Other Faculty ⁽⁵⁾	9	4	13	10.9
TOTAL	175	51	226	216.3

	Head Count			Full-time
	Male	Female	Total	Equivalent
Divinity				
Professor				
Tenured	15	9	24	20.1
Non-Tenured ⁽³⁾	1	3	4	4.0
Associate Professor	1	-	1	1.0
Assistant Professor	3	1	4	4.0
Lecturers & Instructors ⁽⁴⁾	7	10	17	8.3
Other Faculty ⁽⁵⁾	16	13	29	13.9
TOTAL	43	36	79	51.3

	Head Count			Full-time
	Male	Female	Total	Equivalent
Government				
Professor				
Tenured ⁽²⁾	37	5	42	35.0
Non-Tenured ⁽³⁾	8	1	9	8.2
Associate Professor	11	6	17	17.0
Assistant Professor	7	3	10	10.0
Lecturers & Instructors ⁽⁴⁾	21	14	35	32.4
Other Faculty ⁽⁵⁾	12	5	17	11.4
TOTAL	96	34	130	113.9

	Head Count			Full-time
	Male	Female	Total	Equivalent
Public Health				
Professor				
Tenured	58	14	72	59.0
Non-Tenured ⁽³⁾	7	5	12	10.4
Associate Professor	25	14	39	32.6
Assistant Professor	33	21	54	42.4
Lecturers & Instructors ⁽⁴⁾	24	15	39	28.3
Other Faculty ⁽⁵⁾	21	9	30	20.3
TOTAL	168	78	246	193.0

	Head Count			Full-time
	Male	Female	Total	Equivalent
Dental				
Professor				
Tenured	6	1	7	7.0
Non-Tenured ⁽³⁾	3	-	3	3.0
Associate Professor	6	3	9	9.0
Assistant Professor ⁽⁸⁾	7	4	11	11.0
Lecturers & Instructors ⁽⁴⁾	17	13	30	29.0
Other Faculty ⁽⁵⁾	2	3	5	5.0
TOTAL	41	24	65	64.0

	Head Count			Full-time
	Male	Female	Total	Equivalent
University Faculty				
Professor				
Tenured ⁽²⁾	750	175	925	874.6
Non-Tenured ⁽³⁾	70	21	91	80.1
Associate Professor	148	63	211	202.2
Assistant Professor	211	124	335	319.5
Lecturers & Instructors ⁽⁴⁾	344	300	644	430.1
Other Faculty ⁽⁵⁾	202	123	325	210.9
TOTAL (incl. duplicates)	1,725	806	2,531	2,117.5
Adj. for duplicate counts	26	8	34	
TOTAL ⁽¹⁾	1,699	798	2,497	2,117.5

NOTES:

(1) Faculty members are counted once at each school in which they hold an appointment. Several faculty have appointments at more than one school, so an adjusted University total is provided to account for duplication. Counts include all faculty appointed as of October 31, 2005.

(2) University Professors are special endowed positions and are the University's highest professorial distinction. They are included in the Tenured totals of the Schools in which they were originally appointed: Arts and Sciences (12); Business (2); Government (1); and Law (1).

(3) Non-Tenured Professor counts include Non-Tenured Professors and Professors of Practice for all schools except Law and Design (Design Professors of Practice are in the Tenured category). The following schools have Professors of Practice: Arts & Sciences (17), Business (13), Design (6), Divinity (4), Education (4), Government (8).

(4) Counts include Lecturers, Instructors and Preceptors.

(5) Other Faculty include Associate, Academic; Associate, Principal; Counselor, Denominational; Critic; Department Head (Faculty); Director (Faculty); Director, Associate (Faculty); Executive Officer (Faculty); Fellow (Other Faculty); Member of Faculty; Physician (Other Faculty); Professor, Adjunct; Research Associate (Other Faculty), Research Associate, Sr (Other Faculty); Research Fellow, Sr; Supervisor, Student; Tutor, Academic (Other Faculty); Visiting Faculty.

(6) Design School Associate Professor total includes five Adjunct Associate Professors.

(7) Other Academic Units include the Radcliffe Institute for Advanced Study, University Health Services, and Memorial Church.

(8) Dental School Assistant Professor total includes one Assistant Clinical Professor.

As of Fall 2005, the methodology used to count faculty with joint appointments has been revised from prior years to more accurately depict the faculty counts at each school. As a result, certain line items are not always comparable to prior years.

Faculty of Medicine Quad and Hospital-Based Personnel: Fall 2005 ⁽¹⁾

Medical Quad-based and Dental on-payroll counts are also included on the University Faculty counts exhibit.

	Head Count			Full-time
	Male	Female	Total	Equivalent
Medical ⁽²⁾				
Quad-based				
Professor				
Tenured	73	13	86	84.9
Non-Tenured	12	4	16	14.3
Associate Professor	15	6	21	21.0
Assistant Professor	26	12	38	36.9
Lecturers and Instructors	43	30	73	69.4
Other Faculty ⁽³⁾	27	27	54	52.9
TOTAL	196	92	288	279.2

Hospital-Based on Payroll				
Professor ⁽⁴⁾	140	11	151	144.2
Associate Professor ⁽⁴⁾	30	11	41	38.7
Assistant Professor ⁽⁴⁾	18	12	30	27.5
Other Faculty ⁽³⁾	34	33	67	60.8
TOTAL	222	67	289	271.2

Clinical Unpaid Appointments ⁽⁵⁾				
Professor	486	72	558	
Associate Professor	755	219	974	
Assistant Professor	1,183	582	1,765	
Other Faculty ⁽⁶⁾	3,567	2,890	6,457	
TOTAL	5,991	3,763	9,754	

	Head Count			Full-time
	Male	Female	Total	Equivalent
Dental ⁽²⁾				
On-Payroll				
Professor				
Tenured	6	1	7	7.0
Non-Tenured	3	-	3	3.0
Associate Professor	6	3	9	9.0
Assistant Professor ⁽⁷⁾	7	4	11	11.0
Lecturers and Instructors	17	13	30	29.0
Other Faculty ⁽³⁾	2	3	5	5.0
TOTAL	41	24	65	64.0

Clinical Unpaid Appointments ⁽⁵⁾				
Professor	7	-	7	
Associate Professor	11	4	15	
Assistant Professor	20	5	25	
Other Faculty ⁽⁶⁾	172	59	231	
TOTAL	210	68	278	

NOTES:

(1) Faculty members are counted once at each school in which they hold an appointment. Counts include all faculty appointed as of October 31, 2005.

(2) The Faculties of the Medical and Dental Schools are made up of both quad and hospital-based personnel. Quad-based faculty are located in Medical and Dental School facilities and are primarily research oriented. Hospital-based faculty are located in affiliated hospitals and work in both research and clinical settings. Medical School faculty supervise degree students, post-doctoral residents, fellows and interns. FTE's are not available for the Clinical Unpaid Appointments in the Faculty of Medicine.

(3) Other Faculty (on Payroll) include Administrative Officers (Faculty), Associate, Academic; Associate, Principal; Research Associates; and Visiting Faculty.

(4) Hospital-Based on Payroll counts for Professors, Associate Professors and Assistant Professors include small numbers of Clinical Professors, Associate Clinical Professors and Assistant Clinical Professors, respectively.

(5) Clinical Unpaid Appointments at the Medical and Dental schools exclude faculty who also have paid appointments at these schools.

(6) Other Faculty (Unpaid) includes Administrative Officers (Faculty), Assistant, Clinical; Associates; Fellows; House Master; Instructors; Lecturers; Professor, Associate Chaired; Professor, Associate Clinical; Professor, Visiting; Research Associates; Research Fellows; Scientist, Visiting; and Teaching Associate.

(7) Dental (On Payroll) Assistant Professor total includes one Assistant Clinical Professor.

As of Fall 2005, the methodology used to count faculty with joint appointments has been revised from prior years to more accurately depict the faculty counts at each school. As a result, certain line items are not always comparable to prior years.

Non-Faculty Staff in the Schools ⁽¹⁾

Counts are Full-Time Equivalent Figures as of October 31, 2005

University-Wide Totals	University Funding			Sponsored Funding			Non-Faculty Academic Staff ⁽²⁾			Grand Total
	Administrative & Professional	Clerical & Technical	Service & Trades	Administrative & Professional	Clerical & Technical	Subtotal	University Funding	Sponsored Funding	Subtotal	
Faculties	3,339.8	2,880.2	70.7	593.9	576.6	7,461.2	376.6	778.0	1,154.5	8,615.7
Allieds	265.7	162.6	55.3	2.3	2.0	487.9	25.0	2.0	27.0	514.9
Central Administration ⁽³⁾	578.5	327.3	57.0	6.0	6.3	975.1	0.7	-	0.7	975.8
Service Departments ⁽³⁾	696.8	385.0	839.9	0.4	-	1,922.0	7.1	-	7.1	1,929.2
Non-Departmental & Special ⁽⁴⁾	43.7	52.0	-	-	-	95.7	-	-	-	95.7
TOTAL	4,924.5	3,807.2	1,022.8	602.5	584.8	10,941.9	409.4	780.0	1,189.4	12,131.3

Faculties	University Funding			Sponsored Funding			Non-Faculty Academic Staff ⁽²⁾			Grand Total
	Administrative & Professional	Clerical & Technical	Service & Trades	Administrative & Professional	Clerical & Technical	Subtotal	University Funding	Sponsored Funding	Subtotal	
Faculty of Arts and Sciences	639.1	636.3	-	139.7	100.8	1,516.0	214.4	219.1	433.5	1,949.5
Athletics	114.1	25.4	-	-	-	139.5	15.0	-	15.0	154.5
College Library	247.1	276.5	-	1.0	0.3	524.9	-	-	-	524.9
DEAS ⁽⁵⁾	51.7	56.0	8.5	44.9	8.0	169.1	19.3	54.7	73.9	243.1
Division of Continuing Education	72.0	60.2	-	-	-	132.2	-	-	-	132.2
GSAS	22.3	21.9	-	-	-	44.2	-	-	-	44.2
College Life & Student Dorms	111.3	63.4	-	-	-	174.7	0.2	-	0.2	174.9
Museums ⁽⁶⁾	75.1	73.0	-	1.0	6.4	155.5	2.1	11.0	13.0	168.5
Yenching	6.3	1.0	-	-	-	7.3	-	-	-	7.3
Subtotal	1,339.0	1,213.6	8.5	186.6	115.5	2,863.3	250.9	284.8	535.7	3,398.9
Business	440.6	279.3	-	-	-	719.9	-	-	-	719.9
Publishing Division	252.0	18.0	-	-	-	270.0	-	-	-	270.0
Subtotal	692.6	297.3	-	-	-	989.9	-	-	-	989.9
Dental	29.0	68.0	-	2.0	5.0	103.9	5.0	2.0	7.0	110.9
Design	46.3	50.6	-	-	-	96.9	-	-	-	96.9
Divinity	60.8	42.5	-	-	-	103.3	0.2	-	0.2	103.5
Education	121.1	103.0	-	25.2	9.0	258.3	3.0	1.1	4.1	262.4
Government	211.0	175.4	-	29.3	16.1	431.9	13.3	7.1	20.4	452.2
Law	222.5	218.4	-	10.4	6.8	458.0	10.4	1.0	11.4	469.4
Medical	410.5	500.8	62.2	92.2	221.7	1,287.4	68.8	366.8	435.6	1,723.0
Public Health	159.0	178.3	-	248.2	201.9	787.4	24.9	115.2	140.2	927.5
Radcliffe Institute for Advanced Study	48.1	32.4	-	-	0.5	81.0	-	-	-	81.0
Subtotal Faculties	3,339.8	2,880.2	70.7	593.9	576.6	7,461.2	376.6	778.0	1,154.5	8,615.7

(1) Figures do not include temporary employees (except limited regular guards and custodians), LHT's (less-than-half-time), students or teaching fellows. Counts include only filled positions.

(2) Counts include Academic Clinical Fellow, Coaching Assistants, Internal Post Docs, Museum Interns, Teaching Assistants and Visiting Fellows.

(3) Core departments provide central functions of the University (accounts payable, HR benefits, etc.) and are supported through funds from the President, Faculties, and departments. Service departments derive their revenue on a fee-for-service basis from internal customers.

(4) Non-Departmental and Special include Signet Society, Credit Union, Harvard Student Agencies, LASPAU and some interdepartmental personnel.

(5) DEAS refers to Division of Engineering and Applied Sciences.

(6) Museums include Museum of Comparative Zoology, Peabody Museum and Semitic Museum.

Non-Faculty Staff in the Allied Institutions, Central Administration and Service Departments ⁽¹⁾

Counts are Full-Time Equivalent Figures as of October 31, 2005

	University Funding			Sponsored Funding			Non-Faculty Academic Staff ⁽²⁾			Grand Total
	Administrative & Professional	Clerical & Technical	Service & Trades	Administrative & Professional	Clerical & Technical	Subtotal	University Funding	Sponsored Funding	Subtotal	
	Allied Institutions									
American Repertory Theatre	41.0	19.8	-	-	-	60.8	1.0	-	1.0	61.8
Arnold Arboretum	31.7	22.7	15.0	0.5	1.0	70.9	6.0	2.0	8.0	78.9
Art Museums	80.1	59.4	40.3	1.0	1.0	181.8	7.0	-	7.0	188.8
Harvard Magazine	16.9	1.2	-	-	-	18.1	-	-	-	18.1
Inter-Faculty Initiatives	7.5	7.3	-	-	-	14.9	4.0	-	4.0	18.9
Institute of Politics	6.0	10.1	-	-	-	16.1	7.0	-	7.0	23.1
Joint Center for Housing Studies	5.6	7.5	-	0.8	-	13.9	-	-	-	13.9
Memorial Church	7.0	5.7	-	-	-	12.7	-	-	-	12.7
Nieman Foundation	8.9	6.0	-	-	-	14.9	-	-	-	14.9
University Press	57.2	22.8	-	-	-	80.0	-	-	-	80.0
Villa I Tatti ⁽³⁾	3.8	-	-	-	-	3.8	-	-	-	3.8
Subtotal	265.7	162.6	55.3	2.3	2.0	487.9	25.0	2.0	27.0	514.9

Central Administration - Core and Service Departments ⁽⁴⁾

Core departments in bold, service departments in italics

President & Provost, University Marshal and Office of the Governing Boards	61.5	35.6	1.0	-	-	98.2	0.7	-	0.7	98.9
<i>University Information Services</i>	215.9	88.2	3.0	-	-	307.1	-	-	-	307.1
<i>University Health Services</i>	142.9	116.9	-	0.4	-	260.1	7.1	-	7.1	267.3
VP Administration	28.9	9.1	-	-	-	38.0	-	-	-	38.0
<i>Harvard Real Estate Services</i>	73.4	60.1	-	-	-	133.5	-	-	-	133.5
<i>Dining Services</i>	75.0	19.8	361.1	-	-	455.9	-	-	-	455.9
<i>Faculty Club</i>	12.0	4.0	27.1	-	-	43.0	-	-	-	43.0
<i>University Operations Services</i>	116.8	56.3	448.7	-	-	621.8	-	-	-	621.8
VP Development & Alumni Affairs	91.5	54.8	-	-	-	146.3	-	-	-	146.3
<i>Fund Raising Campaigns</i>	60.8	39.9	-	-	-	100.7	-	-	-	100.7
VP Finance	158.4	112.7	-	-	-	271.1	-	-	-	271.1
VP General Counsel	52.4	27.2	56.0	-	-	135.6	-	-	-	135.6
VP Government, Community and Public Affairs	28.6	19.8	-	-	-	48.4	-	-	-	48.4
VP Human Resources	93.2	40.5	-	-	-	133.7	-	-	-	133.7
University Library	64.0	27.8	-	6.0	6.3	104.0	-	-	-	104.0
Subtotal	1,275.3	712.3	896.9	6.4	6.3	2,897.1	7.8	-	7.8	2,905.0
Non-Departmental & Special ⁽⁵⁾	43.7	52.0	-	-	-	95.7	-	-	-	95.7

(1) Figures do not include temporary employees (except limited regular guards and custodians), LHT's (less-than-half-time), students or teaching fellows. Counts include only filled positions.

(2) Counts include Academic Clinical Fellow, Coaching Assistants, Internal Post Docs, Museum Interns, Teaching Assistants and Visiting Fellows.

(3) Additional personnel on local data systems are not included in this count.

(4) Core departments provide central functions of the University (accounts payable, HR benefits etc.) and are supported through funds from the President, Faculties, and departments. Service departments derive their revenue on a fee-for-service basis from internal customers.

(5) Non-Departmental and Special include Signet Society, Credit Union, Harvard Student Agencies, LASPAU and some interdepartmental personnel.

Tuition Charges: FY1986 - FY2006⁽¹⁾



Fiscal Year	College	GSAS	Business	Design	Divinity	Education	Government ⁽²⁾	Law	Medical/Dental ⁽³⁾	Public Health
1986	\$10,266	\$10,266	\$10,750	\$10,165	\$6,640	\$9,552	\$9,840	\$9,650	\$13,100	\$8,826
1987	11,040	11,040	11,900	10,850	7,100	10,176	10,440	10,700	14,000	9,600
1988	11,645	11,645	13,300	11,500	7,600	10,752	11,075	11,400	14,850	10,575
1989	12,310	12,310	14,250	12,250	8,100	11,440	11,800	12,307	15,750	11,470
1990	13,085	13,085	15,350	13,110	8,630	12,232	12,570	13,400	16,850	12,515
1991	13,960	13,960	16,400	14,300	9,200	13,152	13,390	14,475	18,030	13,570
1992	14,860	14,860	17,500	15,450	9,940	14,192	14,662	15,560	19,110	14,790
1993	15,870	15,870	18,550	16,650	10,540	15,044	15,690	16,730	20,257	15,675
1994	16,856	16,856	19,750	17,483	11,070	15,796	16,631	17,750	21,260	16,775
1995	17,851	17,851	21,000	18,360	11,630	16,664	17,710	19,080	22,300	17,770
1996	18,838	18,838	22,700	19,276	12,220	17,581	18,650	20,500	23,192	18,840
1997	19,770	19,770	23,840	20,240	12,830	18,460	19,770	21,700	24,150	19,800
1998	20,600	20,600	25,000	21,252	13,480	19,476	20,720	22,800	25,200	20,890
1999	21,342	21,342	26,260	22,208	14,160	20,430	21,656	23,900	26,000	21,895
2000	22,054	22,054	27,250	23,163	14,870	21,410	22,520	25,000	27,000	22,950
2001	22,694	22,694	28,500	24,159	15,620	22,600	23,400	26,000	28,000	23,980
2002	23,457	23,370	30,050	25,195	16,400	23,720	24,320	27,500	29,000	25,050
2003	24,630	24,630	31,800	26,330	17,220	25,144	26,488	29,500	30,500	26,300
2004	26,066	26,066	33,650	27,910	18,080	26,628	28,580	31,250	32,000	27,670
2005	27,448	27,448	35,600	29,500	18,984	28,092	30,272	33,120	34,250	29,300
2006	\$28,752	\$28,752	\$37,500	\$30,916	\$19,920	\$29,360	\$31,752	\$35,100	\$35,800	\$30,620

Average Annual Growth Rates

	College	GSAS	Business	Design	Divinity	Education	Government	Law	Medical/Dental	Public Health
20 YEAR	5.3%	5.3%	6.4%	5.7%	5.6%	5.8%	6.0%	6.7%	5.2%	6.4%
10 YEAR	4.3%	4.3%	5.1%	4.8%	5.0%	5.3%	5.5%	5.5%	4.4%	5.0%
5 YEAR	4.8%	4.8%	5.6%	5.1%	5.0%	5.4%	6.3%	6.2%	5.0%	5.0%
1 YEAR	4.8%	4.8%	5.3%	4.8%	4.9%	4.5%	4.9%	6.0%	4.5%	4.5%

(1) All amounts exclude the University Health Service fee.

(2) For FY03 and FY04, the School of Government implemented two tuition rate increases: one for first-year students (shown above) and one for returning students (FY03 is \$25,440 and FY04 is \$27,704).

(3) Dental School tuition is \$35,790 for FY06 and \$26,050 for FY99.

SOURCE: ANNUAL TUITION PROPOSALS APPROVED BY THE CORPORATION.

Comparative Undergraduate Tuition and Fees ⁽¹⁾

Ranked in descending order for FY2006



Institution	Actual		Change FY2005 - 2006		Notes	
	FY2005	FY2006	Percent	Nominal	FY2005	FY2006
Columbia Total	\$40,538	\$42,584	5.0%	\$2,046		
Tuition	30,876	32,582	5.5%	1,706		
Mandatory Fees	596	664	11.4%	68	Student Life Fee: \$596	Student Life Fee: \$664
Room & Board	9,066	9,338	3.0%	272		
Chicago Total	\$40,353	\$42,369	5.0%	\$2,016		
Tuition	30,561	32,088	5.0%	1,527		
Mandatory Fees	168	177	5.4%	9	Activity Fee: \$168	Activity Fee: \$177
Room & Board	9,624	10,104	5.0%	480		
UPenn Total	\$39,818	\$41,988	5.4%	\$2,170		
Tuition	27,728	29,252	5.5%	1,524	General Fee: \$2,440	General Fee: \$2,572
Mandatory Fees	3,172	3,334	5.1%	162	Tech Fee: \$518	Tech Fee: \$538
Room & Board	8,918	9,402	5.4%	484	Rec Fee: \$214	Rec Fee: \$224
MIT Total	\$39,900	\$41,800	4.8%	\$1,900		
Tuition	30,600	32,100	4.9%	1,500		
Mandatory Fees	200	200	0.0%	0	Activity Fee: \$200	Activity Fee: \$200
Room & Board	9,100	9,500	4.4%	400		
Brown Total	\$39,808	\$41,770	4.9%	\$1,962		
Tuition	31,198	32,838	5.3%	1,640		
Mandatory Fees	136	136	0.0%	0	Activity Fee: \$136	Activity Fee: \$136
Room & Board	8,474	8,796	3.8%	322		
Cornell Total	\$40,100	\$41,717	4.0%	\$1,617		
Tuition	30,000	31,300	4.3%	1,300		
Mandatory Fees	167	167	0.0%	0	Activity Fee: \$167	Activity Fee: \$167
Room & Board	9,933	10,250	3.2%	317		
Harvard Total	\$39,880	\$41,675	4.5%	\$1,795		
Tuition	28,712	30,122	4.9%	1,410	Student Services	Student Services
Mandatory Fees	1,908	1,975	3.5%	67	Fee: \$1,908	Fee: \$1,975
Room & Board	9,260	9,578	3.4%	318		
Stanford Total	\$39,603	\$41,384	4.5%	\$1,781		
Tuition	29,847	31,200	4.5%	1,353	Associated Students	Associated Students
Mandatory Fees	256	252	-1.6%	(4)	of Stanford Univ. \$256	of Stanford Univ. \$252
Room & Board	9,500	9,932	4.5%	432		
Dartmouth Total	\$39,465	\$41,355	4.8%	\$1,890		
Tuition	30,279	31,770	4.9%	1,491		
Mandatory Fees	186	195	4.8%	9	Activity Fee: \$186	Activity Fee: \$195
Room & Board	9,000	9,390	4.3%	390		
Yale Total	\$38,850	\$41,000	5.5%	\$2,150		
Tuition	29,820	31,460	5.5%	1,640		
Room & Board	9,030	9,540	5.6%	510		
Princeton Total ⁽²⁾	\$38,882	\$40,858	5.1%	\$1,976		
Tuition	29,910	31,450	5.1%	1,540		
Mandatory Fees	585	645	10.3%	60	Activity Fee: \$585	Activity Fee: \$645
Room & Board	8,387	8,763	4.5%	376	(Fresh, Soph & some Jr.)	(Fresh, Soph & some Jr.)

(1) For comparative purposes, the health services fee is included in the tuition amount shown for all schools, with the following exception:

Cornell's health fee (\$1,202 in FY05 and \$1,354 in FY06), is optional and excluded.

(2) Princeton does not include its mandatory fee as part of its announced package. The mandatory fee has been included in the FY05 and FY06 totals for consistency and comparison.

Undergraduate Tuition Over Time: FY1986 - FY2006



Fiscal Year	Undergraduate Package						Economic Indicators ⁽¹⁾					
	Health Services			Student Services			U.S.	Boston	GDP IP	HEPI	Disposable Personal	Median Family Income
	Tuition	Fee	Room	Board	Fee	Total	CPI -U	CPI -U	Deflator (2000=100)	(1983=100)	Income	Family Income Ages 45-54
1986	\$10,266	\$324	\$1,750	\$1,980	\$780	\$15,100	108.8	111.2	69.7	116.3	\$13,037	\$36,653
1987	11,040	350	1,885	2,035	835	16,145	111.2	113.9	71.3	120.9	13,649	38,861
1988	11,645	370	2,065	2,145	875	17,100	115.8	120.2	73.2	126.2	14,241	41,413
1989	12,310	405	2,400	2,145	950	18,210	121.2	127.8	75.7	132.8	15,297	42,192
1990	13,085	460	2,560	2,275	1,015	19,395	127.0	134.3	78.6	140.8	16,257	46,101
1991	13,960	490	2,700	2,425	1,080	20,655	133.9	142.3	81.6	148.1	17,131	47,164
1992	14,860	550	2,900	2,620	1,150	22,080	138.2	146.6	84.4	153.4	17,609	49,606
1993	15,870	584	3,075	2,765	1,220	23,514	142.5	151.1	86.4	157.9	18,494	50,079
1994	16,856	614	3,225	2,910	1,275	24,880	146.2	153.5	88.4	163.3	18,872	52,034
1995	17,851	634	3,370	3,040	1,335	26,230	150.4	156.7	90.3	168.3	19,555	54,379
1996	18,838	634	3,510	3,200	1,393	27,575	154.5	160.6	92.1	173.3	20,287	55,029
1997	19,770	654	3,659	3,336	1,477	28,896	158.9	165.7	93.9	178.6	21,091	57,161
1998	20,600	666	3,808	3,470	1,536	30,080	161.7	169.6	95.4	184.9	21,940	59,959
1999	21,342	686	3,940	3,574	1,590	31,132	164.5	173.2	96.5	189.1	23,161	61,833
2000	22,054	711	4,072	3,685	1,642	32,164	169.3	179.3	97.9	196.9	23,968	65,303
2001	22,694	745	4,190	3,792	1,689	33,110	175.1	187.6	100.0	206.5	25,472	68,082
2002	23,457	816	4,331	3,919	1,746	34,269	178.2	193.3	102.4	216.4	26,236	68,114
2003	24,630	1,020	4,461	4,041	1,798	35,950	182.1	200.0	104.1	221.9	27,164	69,180
2004	26,066	1,142	4,706	4,162	1,852	37,928	186.1	207.0	106.3	231.5	28,062	70,149
2005	27,448	1,264	4,974	4,286	1,908	39,880	191.7	211.8	109.1	239.5	29,477	71,002
2006	\$28,752	\$1,370	\$5,148	\$4,430	\$1,975	\$41,675	195.5	220.1	112.1	251.9	\$30,469	\$72,848

Average Annual Growth Rates

	Undergraduate Package						Economic Indicators ⁽¹⁾					
	Health Services			Student Services			U.S.	Boston	GDP IP	HEPI	Disposable Personal	Median Family Income
	Tuition	Fee	Room	Board	Fee	Total	CPI -U	CPI -U	Deflator (1996=100)	(1983=100)	Income	Family Income Ages 45-54
20 YEAR	5.3%	7.5%	5.5%	4.1%	4.8%	5.2%	3.0%	3.5%	2.4%	3.9%	4.3%	3.5%
10 YEAR	4.3%	8.0%	3.9%	3.3%	3.6%	4.2%	2.4%	3.2%	2.0%	3.8%	4.2%	2.8%
5 YEAR	4.8%	13.0%	4.2%	3.2%	3.2%	4.7%	2.2%	3.2%	2.3%	4.1%	3.6%	1.4%
1 YEAR	4.8%	8.4%	3.5%	3.4%	3.5%	4.5%	2.0%	3.9%	2.8%	5.2%	3.4%	2.6%

(1) Economic indicators are averages of all index figures for a given year. CPI-U and HEPI are based on the fiscal year. All other indices are based on the most recent calendar year.

FY2006 HEPI is based on a May 2006 estimate released by the Commonfund Institute.

FY2006 CPI-U is a projection based on forecasts from *The Economist*, the Survey of Professional Forecasters, and the Congressional Budget Office.

CY2006 Median Family Income (MFI) is a projection based on historical averages.

SOURCE: BUREAU OF LABOR STATISTICS, BUREAU OF ECONOMIC ANALYSIS AND ECONOMIC INDICATORS PUBLICATION.

Degree Student Financial Assistance: FY2005 ⁽¹⁾



Expressed in thousands of dollars

	GRANTS			Total	As a % of Total for School
	Institutional	Federal	Other Outside		
College	\$76,118	\$6,177	\$11,250	\$93,545	77%
GSAS	60,047	20,130	6,536	86,713	68%
Business	13,769	-	1,785	15,553	21%
Dental	726	798	87	1,611	20%
Design	4,569	-	449	5,019	34%
Divinity	6,190	6	209	6,405	59%
Education	7,550	174	1,483	9,207	38%
Government	12,060	109	6,645	18,814	49%
Law	11,750	266	1,378	13,393	20%
Medical	6,945	539	5,107	12,591	47%
Public Health	4,678	3,258	3,688	11,624	61%
Extension	449	181	101	730	18%
ART ⁽²⁾	83	24	5	111	7%
TOTAL	\$204,933	\$31,661	\$38,723	\$275,317	51%

Grants

Institutional grants are from University unrestricted and restricted monies.

Federal grants include all Federal programs in each school including programs such as the Pell grant, SEOG or graduate training grants.

Outside grants include state and private support of students. In some schools, these numbers may include corporate sponsorship or other sponsored billing.

	LOANS			Total	As a % of Total for School
	Institutional	Federal	Other Outside		
College ⁽³⁾	\$2,777	\$13,829	\$5,775	\$22,380	18%
GSAS	-	1,250	589	1,839	1%
Business	1,608	18,709	38,105	58,422	79%
Dental	112	5,295	849	6,257	79%
Design	-	6,400	2,953	9,353	63%
Divinity	-	3,543	57	3,600	33%
Education	90	10,552	3,889	14,531	60%
Government	-	8,438	9,865	18,303	48%
Law	4,222	27,538	17,958	49,718	76%
Medical	3,065	10,543	435	14,043	53%
Public Health	-	5,671	1,749	7,420	39%
Extension	-	2,677	562	3,239	82%
ART ⁽²⁾	-	750	573	1,323	87%
TOTAL	\$11,874	\$115,194	\$83,359	\$210,427	39%

Loans

Institutional loans are made to students from University capital without Federal guarantee.

Federal loan programs may involve capital from Harvard, or other private or Federal sources, loaned under Federal sponsorship such as Perkins, Direct Loans and FFEL programs..

Outside loans include private capital loaned to students or parents. It excludes personal loans.

	EMPLOYMENT			As a % of Total for School	TOTAL Grant, Loans & Employment
	Work-Study (CWSP)	Other Term	Total		
College	\$860	\$4,497	\$5,357	4%	\$121,282
GSAS	404	39,093	39,497	31%	128,049
Business	-	-	-	0%	73,976
Dental	13	-	13	0%	7,880
Design	335	92	427	3%	14,798
Divinity	771	-	771	7%	10,776
Education	569	-	569	2%	24,307
Government	200	769	969	3%	38,086
Law	755	1,558	2,312	4%	65,423
Medical	51	-	51	0%	26,685
Public Health	52	-	52	0%	19,096
Extension	-	-	-	0%	3,969
ART ⁽²⁾	40	42	82	5%	1,516
TOTAL	\$4,049	\$46,051	\$50,100	9%	\$535,844

Employment

Work-Study is a Federally- sponsored partnership with colleges and universities to provide students with the opportunity to work while in school.

Other term earnings reflect on-campus earnings by students who are not part of the work-study program. Jobs include casual employment (to the extent known), teaching fellowships, research assistantships and resident tutors.

(1) Amounts do not include the Business School, Law School, Medical School or the School of Government funding for graduates in the Low Income Protection Plan/Loan Repayment Assistance Programs.

(2) ART refers to the American Repertory Theater.

(3) College total for loans includes Parental Loans and PLUS Loans.

SOURCE: INTERNAL SURVEY

Federal Sponsored Research: FY2004 - FY2005

Expressed in thousands of dollars



	FY2004			FY2005			Change in Total Exp. 2004/2005	FY2005 Indirect as % of Total
	Direct Costs	Indirect Costs	Total Costs	Direct Costs	Indirect Costs	Total Costs		
ACADEMIC DEPARTMENTS								
FAS								
Arts & Sciences	\$56,070	\$23,386	\$79,456	\$62,426	\$26,305	\$88,731	11.7%	29.6%
Division of Engineering and Applied Sciences	20,234	8,323	28,557	22,451	9,513	31,964	11.9%	29.8%
College Library	112	9	121	91	9	100	-	-
Museum of Comparative Zoology/Peabody Museum	3,788	943	4,731	3,005	1,063	4,068	-	-
College Life, Athletics, GSAS	-	-	-	-	-	-	-	-
FAS Subtotal	\$80,204	\$32,660	\$112,864	\$87,973	\$36,890	\$124,863	10.6%	29.5%
School of Business Administration	9	(29)	(20)	-	-	-	-	-
School of Dental Medicine	3,264	879	4,143	4,334	1,350	5,685	37.2%	23.8%
School of Design	101	47	148	64	21	85	(42.4%)	25.1%
Divinity School	-	-	-	-	-	-	-	-
Graduate School of Education	4,981	837	5,819	5,515	1,059	6,574	13.0%	16.1%
JFK School of Government	6,713	1,784	8,497	8,490	1,957	10,446	22.9%	18.7%
Law School	296	30	326	344	51	394	21.1%	12.9%
Medical School	141,587	60,062	201,649	142,517	60,654	203,171	0.8%	29.9%
School of Public Health	97,948	34,913	132,861	113,821	41,109	154,929	16.6%	26.5%
Radcliffe Institute for Advanced Study	307	151	457	277	174	451	(1.5%)	38.7%
Other Faculties Subtotal	\$255,206	\$98,673	\$353,880	\$275,361	\$106,375	\$381,736	7.9%	27.9%
Other Academic Departments⁽¹⁾	\$992	\$94	\$1,087	\$372	\$111	\$484	(55.5%)	23.0%
Service and Other Departments⁽²⁾	\$435	\$46	\$481	\$703	\$80	\$782	62.7%	10.2%
GRAND TOTAL⁽³⁾	\$336,838	\$131,474	\$468,312	\$364,409	\$143,456	\$507,865	8.4%	28.2%

(1) Includes Arnold Arboretum, Harvard University Art Museums, and Joint Center for Housing Studies.

(2) Includes Central Administration, Memorial Church, University Library and University Health Services.

(3) Totals include both Federal and Federal Once-Removed (Federal Once-Removed total cost for FY2004 is \$54,045 and for FY2005 is \$57,574). Totals exclude financial aid.

SOURCE: OFFICE FOR SPONSORED PROGRAMS - ANNUAL REPORT

Federal Research by Agency: FY2004 - FY2005



Expressed in thousands of dollars

	FY2004	FY2005	% Change	FY2005 Total as % of Federal Total
Department of Health & Human Services				
National Institutes of Health	\$343,248	\$354,996	3.4%	69.9%
Other DHHS	24,621	46,193	87.6%	9.1%
Subtotal	\$367,870	\$401,189	9.1%	79.0%
Department of Defense				
Department of the Navy	7,725	9,657	25.0%	1.9%
Department of the Army	4,824	6,843	41.8%	1.3%
Defense Advanced Research Projects Agency ⁽¹⁾	2,924	2,885	(1.3%)	0.6%
Department of the Air Force ⁽²⁾	2,748	2,525	(8.1%)	0.5%
Subtotal	\$18,222	\$21,911	20.2%	4.3%
National Science Foundation	37,525	38,157	1.7%	7.5%
Department of Energy	12,897	12,901	0.0%	2.5%
Nat'l. Aeronautics & Space Administration	10,429	8,367	(19.8%)	1.6%
Department of Education	5,393	6,890	27.8%	1.4%
Environmental Protection Agency	4,513	5,972	32.3%	1.2%
Agency for International Development	3,684	5,578	51.4%	1.1%
Department of Commerce	1,371	1,674	22.2%	0.3%
Department of State	1,797	1,610	(10.4%)	0.3%
Department of Agriculture	148	541	266.5%	0.1%
Nat'l. Endowment for the Humanities	441	420	(4.7%)	0.1%
Department of Justice	1,022	375	(63.3%)	0.1%
Department of Transportation	174	248	42.0%	0.0%
Department of Veterans Affairs	8	121	1373.2%	0.0%
Department of Housing and Urban Development	469	72	(84.7%)	0.0%
Central Intelligence Agency	56	69	23.4%	0.0%
General Services Administration	183	45	(75.6%)	0.0%
National Endowment for the Arts	93	-	(100.0%)	0.0%
Other Federal Agencies	2,020	1,728	(14.5%)	0.3%
GRAND TOTAL ⁽³⁾	\$468,312	\$507,865	8.4%	100.0%

(1) Includes Other - Department of Defense.

(2) Includes Air Force Office of Scientific Research

(3) Totals include both Federal and Federal Once-Removed (Federal Once-Removed total cost for FY2004 is \$54,045 and for FY2005 is \$57,574). Totals exclude financial aid.

Non-Federal Sponsored Research: FY2004 - FY2005



Expressed in thousands of dollars

ACADEMIC DEPARTMENTS	FY2004			FY2005			Change in Total Exp. 2004/2005	FY2005 Indirect as % of Total
	Direct Costs	Indirect Costs	Total Costs	Direct Costs	Indirect Costs	Total Costs		
FAS								
Arts & Sciences	\$14,379	\$1,196	\$15,575	\$15,879	\$1,178	\$17,057	9.5%	6.9%
Division of Engineering and Applied Sciences	1,123	261	1,384	1,312	539	1,850	33.7%	29.1%
College Library	-	-	-	-	-	-	-	-
Museum of Comparative Zoology/ Peabody Museum	238	11	249	215	15	230	(7.9%)	6.5%
College Life, Athletics, GSAS	-	-	-	15	-	15	-	-
FAS Subtotal	\$15,740	\$1,468	\$17,208	\$17,420	\$1,732	\$19,151	11.3%	9.0%
School of Business Administration	216	-	216	140	-	140	(35.1%)	0.0%
School of Dental Medicine	94	38	132	435	52	486	267.4%	10.6%
School of Design	334	33	367	329	58	387	5.3%	14.9%
Divinity School	526	18	543	154	16	170	(68.7%)	9.4%
Graduate School of Education	7,460	535	7,995	6,618	463	7,081	(11.4%)	6.5%
JFK School of Government	14,525	1,943	16,468	12,890	1,625	14,515	(11.9%)	11.2%
Law School	4,696	290	4,986	3,679	242	3,921	(21.4%)	6.2%
Medical School	36,229	780	37,010	29,975	4,231	34,206	(7.6%)	12.4%
School of Public Health	30,314	3,823	34,137	29,073	3,624	32,697	(4.2%)	11.1%
Radcliffe Institute for Advanced Study	613	9	621	150	4	153	(75.3%)	2.5%
Other Faculties Subtotal	\$95,006	\$7,469	\$102,475	\$83,442	\$10,313	\$93,756	(8.5%)	11.0%
Other Academic Departments⁽¹⁾	\$1,587	\$82	\$1,669	\$1,402	\$98	\$1,501	(10.1%)	6.6%
Service and Other Departments⁽²⁾	\$908	\$21	\$929	\$1,059	\$7	\$1,067	14.8%	0.7%
GRAND TOTAL⁽³⁾	\$113,241	\$9,040	\$122,281	\$103,325	\$12,151	\$115,475	(5.6%)	10.5%

(1) Includes Harvard University Art Museums, Joint Center for Housing Studies, Nieman Foundation, and Villa I Tatti.

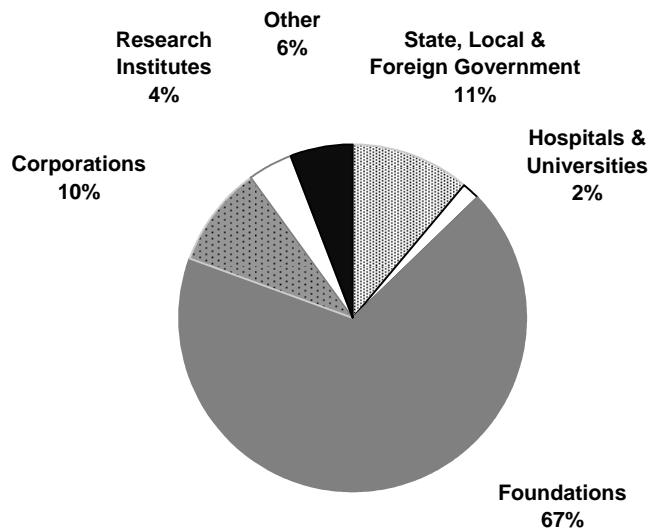
(2) Includes Central Administration, Memorial Church, University Library and University Health Services.

(3) Total excludes financial aid expenditures.

Expenditures under Non-Federal Sponsored Research by Sponsor Source: FY2005

Expressed in thousands of dollars

	Hospitals & Other Universities	State, Local, & Foreign Government	Foundations	Corporations	Research Institutes	Other Sources	Total
FAS							
Faculty of Arts & Sciences	\$124	\$219	\$13,713	\$899	\$1,239	\$863	\$17,056
Division of Engineering and Applied Sciences	17	-	484	1,341	-	9	1,850
College Library	-	-	-	-	-	-	-
Museum of Comp. Zoology/Peabody Museum	109	-	75	-	46	-	230
College Life, Athletics, GSAS	-	-	15	-	-	-	15
FAS Subtotal	\$250	\$219	\$14,287	\$2,239	\$1,285	\$872	\$19,151
School of Business Administration	-	-	140	-	-	-	140
School of Dental Medicine	-	83	201	144	-	58	486
School of Design	-	20	210	115	-	43	387
Divinity School	7	-	163	-	-	-	170
Graduate School of Education	100	395	6,084	71	10	421	7,081
JFK School of Government	34	1,618	9,016	819	285	2,743	14,515
Law School	62	-	3,616	-	143	100	3,921
Medical School	475	2,493	20,778	6,808	2,371	1,281	34,207
School of Public Health	1,134	7,900	20,955	880	583	1,245	32,697
Radcliffe Institute for Advanced Study	-	-	153	-	-	-	153
Other Faculties Subtotal	\$1,812	\$12,509	\$61,317	\$8,836	\$3,392	\$5,891	\$93,757
Other Academic Departments ⁽¹⁾	-	\$6	\$1,495	-	-	-	\$1,500
Service and Other Departments ⁽²⁾	-	\$64	\$1,021	(\$18)	-	-	\$1,067
GRAND TOTAL ⁽³⁾	\$2,061	\$12,797	\$78,119	\$11,058	\$4,677	\$6,763	\$115,475



(1) Includes Harvard University Art Museums, Joint Center for Housing Studies, Nieman Foundation, and Villa I Tatti.

(2) Includes Central Administration, University Library and University Health Services.

(3) Total excludes financial aid expenditures.

Historical Funding of Research by Sponsor

Expressed in thousands of dollars

Federal (Prime and Once-Removed)

	Fiscal Year				
	2001	2002	2003	2004	2005
National Institutes of Health	\$241,567	\$283,112	\$297,035	\$343,248	\$354,996
National Science Foundation	28,087	32,665	30,437	37,525	38,157
Other DHHS	19,109	18,549	22,714	24,621	46,193
Department of Defense	13,615	16,569	19,060	18,222	21,911
Department of Energy	8,428	8,751	10,701	12,897	12,901
Nat'l. Aeronautics & Space Administration	9,339	9,803	9,402	10,429	8,367
Department of Education	5,514	6,634	6,096	5,393	6,890
Environmental Protection Agency	4,398	4,025	4,077	4,513	5,972
Agency for International Development	8,490	4,286	4,153	3,684	5,578
Department of Commerce	510	802	979	1,371	1,674
Department of State	1,157	1,581	1,705	1,797	1,610
Other ⁽¹⁾	8,571	7,358	6,305	4,613	3,617
Federal Total	\$348,785	\$394,135	\$412,664	\$468,312	\$507,865

Non-Federal

	2001	2002	2003	2004	2005
Foundations	\$92,557	\$89,503	\$89,251	\$86,359	\$78,119
State, Local & Foreign Government	9,944	9,840	10,629	10,439	12,797
Corporations	18,425	13,875	9,916	10,084	11,058
Other Sources	10,028	8,828	8,886	7,429	6,763
Research Institutes	5,580	3,751	5,347	5,415	4,677
Hospitals & Other Universities	1,930	2,172	2,254	2,555	2,061
Non-Federal Total	\$138,463	\$127,971	\$126,283	\$122,281	\$115,475
GRAND TOTAL ⁽²⁾	\$487,248	\$522,105	\$538,947	\$590,593	\$623,340

Growth in Sponsored Projects

Expressed in millions of dollars

Fiscal Year	Expenditure Actual \$	% Change	Expressed	
			as FY05 \$	% Change in FY05 \$
2001	\$487.2	-	\$533.4	-
2002	522.1	7.2%	561.7	5.3%
2003	538.9	3.2%	567.2	1.0%
2004	590.6	9.6%	608.4	7.2%
2005	\$623.3	5.5%	\$623.3	2.5%

(1) Agencies listed on this exhibit are based on FY2005 expenditures. Information on agencies in prior years can be obtained from the Office for Sponsored Programs.

(2) Total excludes financial aid expenditures.

Harvard University Library System

The Harvard Library

The Harvard University Library, founded in 1638, is the largest academic library system in the world. Harvard's extensive collections serve as invaluable resources for students, faculty, and researchers. Through its use of cutting-edge technology, the Harvard University Library is offering online access to an increasing number of library resources. For more information about Harvard's libraries, visit <http://lib.harvard.edu>.

Harvard's Library Holdings

Harvard's library research resources include over 15.5 million volumes, approximately 7.5 million photographs, millions of manuscript pages, recordings, maps, ephemera, and an exploding number of digital resources, which, together, are under the day-to-day care and management of the 1,200 full-time-equivalent staff members in the nearly 90 libraries located across the University.

The University Library System

Through the Harvard University Library (HUL), Harvard's numerous libraries are gathered into a single system. HUL is a department of the University's Central Administration that reports to the president and is headed by the senior faculty member who holds the title of Carl H. Pforzheimer University Professor and Director of the University Library. In addition to serving as the head of HUL, the director interprets the technical and organizational challenges of the library system to the president and serves as chief steward of the collections for the Harvard Corporation.

HUL operates programs and services that lay the foundations for the acquisition, dissemination, and preservation of those holdings. HUL's programs and services cover five service areas:

- Office for Information Systems, which provides information systems and services that support the work of the Harvard Libraries;
- Harvard Depository, a state-of-the art climate-controlled paper-based storage and retrieval facility;
- Harvard University Archives, including the Records Management Office, which is responsible for the institutional memory of the University, including University records and related historical collections;
- Open Collections Program, which creates subject-based digital collections that will benefit teaching, learning, and research worldwide; and
- Weissman Preservation Center, which manages programs, projects, and services dedicated to preserving the vast collections held in the Harvard University Library system.

Summary of University Library Growth and Expenditures FY2005

	Collections Increase			Expenditures (in \$000's) ⁽²⁾					
	Gross	Net ⁽¹⁾	Volumes & Pamphlets	Salaries & Wages	Benefits	Books & Other Materials	Binding	Other Costs	Total
University Library (HUL)	1,086	1,086	117,475	\$6,446	\$2,084	\$12	\$4	\$7,537	16083 ⁽³⁾
Faculty of Arts & Sciences									
Central Collections	352,673	89,632	9,538,436	29,495	9,655	14,263	609	18,648	72,670
House Libraries	-	-	130,687	107	2	11	2	7	127
Departmental & Divisional Libraries	4,479	3,846	390,017	1,008	291	2,370	38	98	3,804
Special & Research Libraries	23,078	22,185	1,180,179	3,344	1,045	1,759	82	1,002	7,232
Graduate/Profess. School Libraries	48,028	15,605	4,198,739	17,209	5,685	9,155	327	8,651	41,026
Less Duplication	-	-	-	-	-	-	-	(6,885)	(6,885)
University Library Totals	429,344	132,354	15,555,533	\$57,609	\$18,762	\$27,570	\$1,062	\$29,058	\$117,974

(1) Net increase refers to the increase in volumes after accounting for replacement of previously-owned volumes.

(2) Due to rounding, expenditures may be slightly different than reported in the Library Annual Report.

(3) Expenditures for Harvard Depository reflect operations but exclude the interest and amortization for the Depository of \$2,010,053.

SOURCE: HARVARD UNIVERSITY LIBRARY ANNUAL REPORT 2004-2005

Library Collections: FY2005



	Increase FY2005		Volumes & Pamphlets FY2005 ⁽¹⁾
	Gross	Net	
University Library			
University Archives	853	853	116,868
Weissman Preservation Center	233	233	607
Library of the Faculty of Arts & Sciences (Harvard College Library)			
Central Collections			
Cabot	70,110	68,581	272,493
Fine Arts	6,900	6,707	330,058
Geological Sciences	355	(66,960)	-
Harvard - Yenching	31,151	31,151	1,124,063
Hilles	1,939	(162,932)	25,146
Houghton	6,132	6,131	481,399
Lamont	3,909	(10,228)	181,020
Littauer	12,980	9,304	437,011
Loeb Music	11,027	11,027	255,733
Social Sciences Program	8,993	296	50,809
Tozzer (Peabody Museum)	4,953	4,941	248,219
Widener	194,224	191,614	6,132,485
House Libraries ⁽²⁾	-	-	130,687
Department & Divisional Libraries ⁽³⁾	4,479	3,846	390,017
Special Libraries			
Biblioteca Berenson	3,799	3,799	143,893
Botany Libraries	3,359	3,357	288,871
Career Reference	199	(20)	5,104
Center for Astrophysics: Wolbach Library	1,366	1,304	77,090
Center for European Studies	241	241	13,485
Center for Hellenic Studies	1,337	1,337	56,027
Center for International Affairs	-	-	9,695
Dumbarton Oaks Research Library	7,775	7,252	195,216
Fairbank Research Center	1,000	1,000	28,800
Gibb Islamic Seminar	30	30	7,547
Grossman Library for University Extension	208	124	5,249
Harvard Forest in Petersham	-	-	20,000
Harvard Planning Information Research Center	-	-	1,205
Milman Parry Collection of Oral Literature	-	-	1,200
Museum of Comparative Zoology	3,407	3,407	295,398
Nieman Collection of Contemporary Journalism	67	67	3,297
Davis Center (formerly Russian Research Center)	205	205	19,383
Ukrainian Research Institute: Reference	73	73	3,409
University Development Office	12	9	5,310
Graduate and Professional School Libraries			
Business: Baker Library	4,766	2,693	637,542
Design: Frances L. Loeb	3,772	3,348	287,912
Divinity: Andover - Harvard Theological	5,149	5,091	480,185
Education: Monroe C. Gutman	2,489	2,366	203,986
JFK School of Government ⁽⁴⁾	2,566	499	63,687
Law School	24,689	19,426	1,723,645
Medicine, Public Health and Dental Medicine			
Center for Population Studies	-	(16,309)	-
Francis A. Countway Library of Medicine	4,296	(1,808)	705,676
New England Primate Research Center	218	216	14,628
Radcliffe Institute for Advanced Study			
Henry A. Murray Research Center	-	-	277
Schlesinger Library on History of American Women	83	83	81,201
TOTAL UNIVERSITY COLLECTION	429,344	132,354	15,555,533

(1) Volumes and Pamphlets for individual libraries include volumes transferred to the Depository. Totals reflect corrections in count.

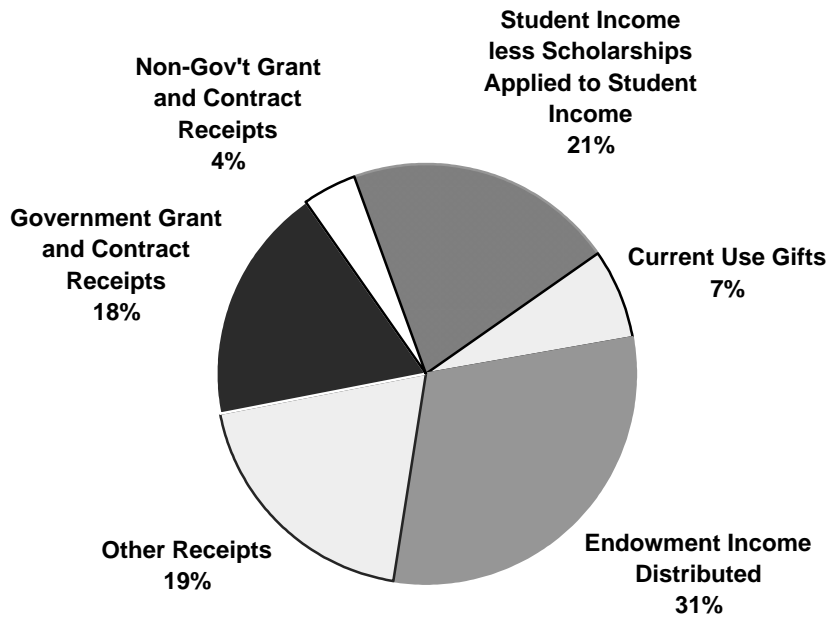
(2) Includes Adams, Cabot, Currier, Dudley, Dunster, Eliot, Kirkland, Leverett, Lowell, Mather, Pforzheimer, Quincy, Winthrop.

(3) Includes African American Studies: Franklin and Wendy Raines, Biochemical Sciences Tutorial, Biological Laboratories Library, Celtic: Fred N. Robinson, Chemistry and Chemical Biology, Classics: Herbert Weir Smyth, Documentation Center on Contemporary Japan, Engineering and Applied Sciences: Gordon McKay, English: Child Memorial, History Departmental, History of Science, Linguistics, Mathematics: George David Birkhoff, Medieval Studies, Near Eastern Languages and Civilizations, Paleography, Philosophy: Robbins, Physics Research, Psychology Research, Sanskrit, Social Relations/Sociology, and Statistics.

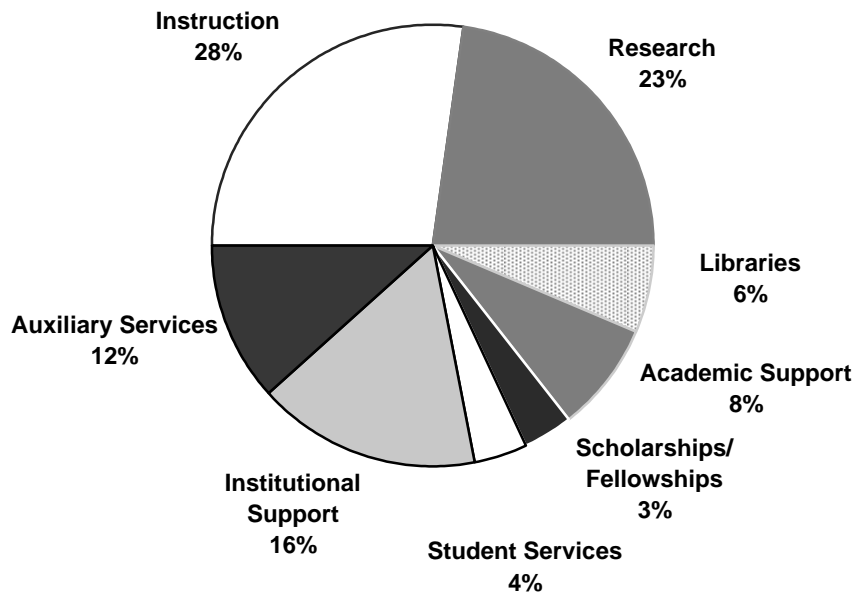
(4) Includes the Belfer Center for Science and International Affairs.

Total University Income and Expenses for Fiscal Year Ended June 30, 2005
Expressed in thousands of dollars

Total Income - \$2,800,936



Total Expenses - \$2,757,373



Departmental Operating Expenses Year Ended June 30, 2005



Expressed in thousands of dollars

	Salaries and Wages	Employee Benefits	Scholarships/ Student Awards	Less: Financial Aid Applied against Income	Equipment and Supplies	Space and Occupancy	Depreciation	Other Expenses ⁽¹⁾	Total Expenses
Faculty of Arts & Sciences									
Faculty of Arts & Sciences	\$311,561	\$78,921	\$148,435	(\$111,113)	\$53,012	\$111,234	\$56,617	\$139,122	\$787,789
Division of Continuing Education	17,011	3,685	4,393	(4,339)	1,096	2,027	672	12,021	36,566
FAS Museums	10,531	3,264	1,080	(1)	2,005	2,692	959	5,569	26,099
Total Faculty of Arts & Sciences	\$339,103	\$85,870	\$153,908	(\$115,453)	\$56,113	\$115,953	\$58,248	\$156,712	\$850,454
School of Business Administration	120,890	32,798	14,746	(12,968)	16,546	25,032	16,183	93,920	307,147
School of Dental Medicine	11,879	3,619	2,408	(1,169)	2,240	1,763	1,771	7,299	29,810
Graduate School of Design	12,723	3,375	5,288	(4,593)	1,304	3,007	793	6,083	27,980
Divinity School	11,096	3,095	6,284	(5,254)	1,137	2,051	1,145	3,594	23,148
Graduate School of Education	26,546	6,998	7,672	(5,560)	1,827	4,345	945	13,351	56,124
School of Government	47,185	13,789	12,618	(8,412)	5,946	10,838	2,359	27,104	111,427
Law School	50,330	14,146	14,523	(11,363)	5,474	14,475	5,300	30,467	123,352
Medical School	149,684	44,845	46,612	(17,517)	42,119	80,304	43,396	99,571	489,014
Radcliffe Institute for Advanced Study	6,407	1,955	2,166	-	474	1,099	645	3,231	15,977
School of Public Health	77,210	22,716	13,253	(6,662)	18,259	29,696	9,243	75,393	239,108
Other Faculties Subtotal	\$513,950	\$147,336	\$125,570	(\$73,498)	\$95,326	\$172,610	\$81,780	\$360,013	\$1,423,087
Total Faculties	\$853,053	\$233,206	\$279,478	(\$188,951)	\$151,439	\$288,563	\$140,028	\$516,725	\$2,273,541
Arnold Arboretum	4,387	1,373	42	(14)	422	885	214	1,754	9,063
Harvard University Art Museums	9,345	3,079	75	(31)	3,415	1,058	1,436	3,758	22,135
Joint Center for Housing Studies	952	320	21	-	57	153	-	571	2,074
Nieman Foundation	1,264	401	959	-	94	413	26	1,401	4,558
Villa I Tatti	2,411	868	810	-	562	790	199	1,308	6,948
Other Academic Departments Subtotal	\$18,359	\$6,041	\$1,907	(\$45)	\$4,550	\$3,299	\$1,875	\$8,792	\$44,778
Service Departments	\$107,999	\$36,361	\$879	-	\$46,463	(\$2,705)	\$32,361	\$19,970	\$241,328
Memorial Church	\$962	\$293	-	-	\$86	\$746	\$88	\$462	\$2,637
Central Administration ⁽²⁾	\$112,806	\$37,943	\$852	(\$4)	\$4,122	\$6,222	\$22,211	\$10,937	\$195,089
TOTAL UNIVERSITY EXPENSES	\$1,093,179	\$313,844	\$283,116	(\$189,000)	\$206,660	\$296,125	\$196,563	\$556,886	\$2,757,373

(1) Includes expense credits and transfers.

(2) Includes Harvard University Library and other University funds.

SOURCE: UNIVERSITY ACCOUNTING SERVICES

Physical Plant: FY2005

The University owns and operates more than six hundred buildings of varying sizes and characteristics, spread over a wide geographic area. They encompass approximately 23.2 million gross square feet of space. The physical plant provides living space for students and faculty, research facilities to advance our base of knowledge, classroom and library spaces for the dissemination of knowledge, and space for administrative and support services.

Location ⁽¹⁾	Gross Square Footage of		Principal Activity on Site
	Acres	Buildings (in 000's)	
Cambridge, MA	225	13,405	Main Campus
Boston, MA	21	3,045	Medical and Dental Schools, School of Public Health
Boston (Allston)	351	4,849	Business School; Printing and Publisher; Athletics; Other
Boston (Jamaica Plain)	233	41	Arnold Arboretum
Watertown, MA	29	1,160	Arsenal Buildings
Weston, MA	69	11	Case Estates (Arnold Arboretum)
Somerville, MA	2	16	Affiliated Housing
Medford, MA	1		
Bedford, MA	79	11	Concord Field Station
Carlisle, MA	69		Concord Field Station
Concord, MA	605		Field Station (Museum of Comparative Zoology)
Marlborough, MA	43		Animal Research Center (NERPC)
Southborough, MA	87	293	Harvard Depository
Petersham, MA	2,704	71	Harvard Forest (Forestry, Botany)
Hamilton, MA	99		Harvard Forest
Phillipston, MA	205		Harvard Forest
Royalston, MA	57		Harvard Forest
Harvard, MA	37	19	Agassiz Cottage (Observatory)
Shrewsbury, MA	6	16	Artemas Ward Homestead (Museum)
Kittery Point & Sutton Island, ME	n/a	12	Howells Memorial & Kendall Houses
Ledyard, CT	n/a	21	Red Top, Crew Quarters
Washington, DC	16	150	Dumbarton Oaks & Center for Hellenic Studies
Florence, Italy	n/a	94	Villa I Tatti - Ctr. for Italian Renaissance Studies
TOTAL	4,938	23,214	

(1) In addition to locations listed above, Harvard has numerous smaller holdings.

SOURCES: HARVARD REAL ESTATE SERVICES

Physical Plant: FY2005



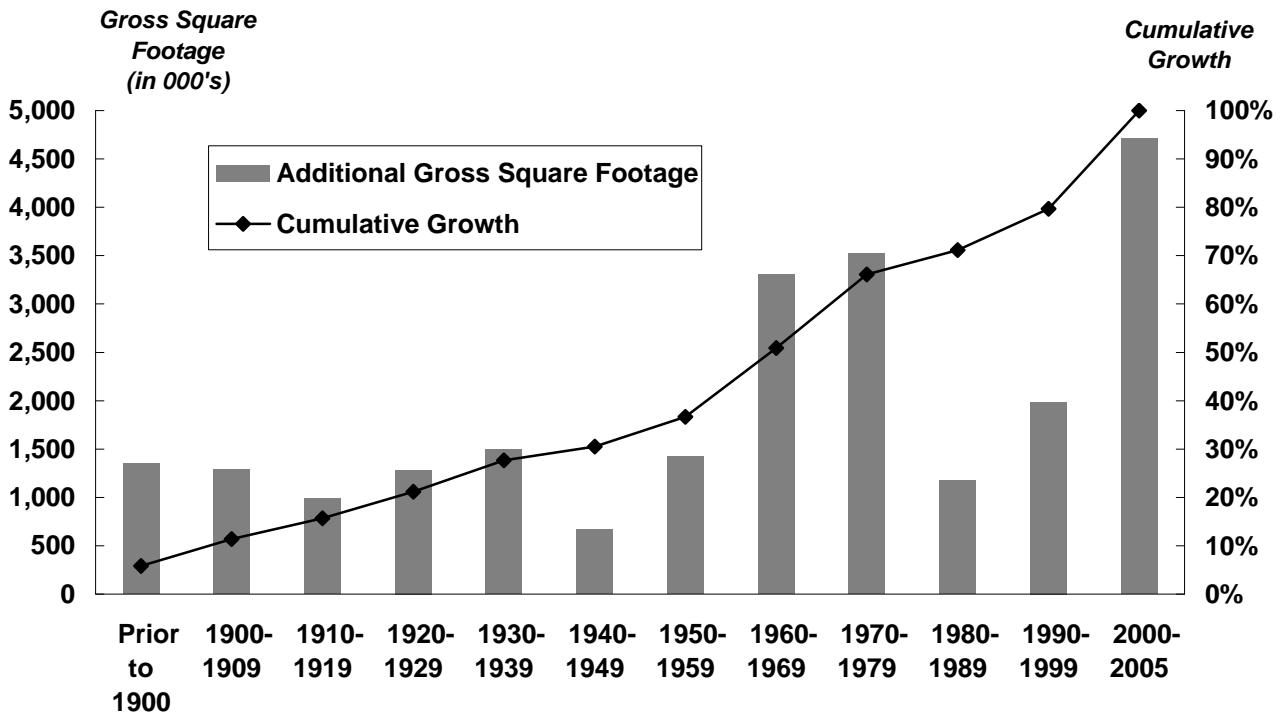
Building Ownership

	Number of Buildings	Gross Square Footage	
		of Buildings (in 000's)	As a % of Total
FAS	260	8,527	36.7%
Radcliffe	16	282	1.2%
Business	33	1,470	6.3%
Dental ⁽¹⁾	1	40	0.2%
Design	2	179	0.8%
Divinity	7	180	0.8%
Education	6	215	0.9%
Government	4	264	1.1%
Law	19	920	4.0%
Medical	29	2,466	10.6%
Public Health	8	573	2.5%
Real Estate	174	6,455	27.8%
Central Administration	55	1,642	7.1%
TOTAL	614	23,214	100.0%

Primary Uses

	Gross Square Footage	
	of Buildings (in 000's)	As a % of Total
Residential/Dormitory	6,700	28.9%
Office/Classroom	4,708	20.3%
Lab/Studio	4,438	19.1%
Library	1,572	6.8%
Assembly/Museum	1,116	4.8%
Support	2,164	9.3%
Commercial	1,543	6.6%
Athletic	895	3.9%
Health Care	79	0.3%
TOTAL	23,214	100.0%

Additions to the Physical Plant



(1) Dental School's New Research Building was not in service until FY2006 and is therefore excluded.

SOURCE: HARVARD REAL ESTATE SERVICES

Market Value of Endowment Funds as of June 30, 2005

Expressed in thousands of dollars

Individual Unit Value: \$1,425.68 ⁽¹⁾

	Endowment Market Value ⁽¹⁾	Participating Units	Market Value % of Total
Arts and Sciences ⁽²⁾	\$11,711,315	8,201,977	46.4%
Business	1,923,709	1,341,179	7.6%
Dental	158,759	111,357	0.6%
Design	321,190	225,289	1.3%
Divinity	455,271	319,337	1.8%
Education	389,178	272,977	1.5%
Government ⁽³⁾	765,781	532,173	3.0%
Law	1,278,171	896,256	5.1%
Medical	2,922,663	2,049,390	11.6%
Radcliffe Institute for Advanced Study	404,234	283,464	1.6%
Public Health	848,137	594,900	3.4%
Other Academic Departments ⁽⁴⁾	994,026	695,496	3.9%
Central Administration ⁽⁵⁾	3,049,370	2,146,976	12.1%
Subtotal	\$25,221,804	17,670,771	100.0%
Pledge Balances	379,327	-	-
Interests in Perpetual Trusts held by Others	251,917	-	-
Total Endowment	\$25,853,048	17,670,771	100.0%

Historical Market Value of Endowment

	June 30, 2002	June 30, 2003	June 30, 2004
Arts and Sciences ⁽²⁾	\$7,902,050	\$8,743,246	\$10,256,052
Business	1,192,032	1,330,368	1,602,580
Dental	111,771	120,992	140,214
Design	223,400	244,803	283,266
Divinity	321,475	346,614	400,107
Education	272,016	294,038	342,062
Government ⁽³⁾	531,909	582,141	672,674
Law	840,291	927,308	1,099,556
Medical	1,913,922	2,094,252	2,463,945
Radcliffe Institute for Advanced Study	256,352	289,939	355,221
Public Health	587,200	633,753	743,238
Other Academic Departments ⁽⁴⁾	683,920	742,188	867,137
Central Administration ⁽⁵⁾	2,110,918	2,284,532	2,672,320
Subtotal	\$16,947,256	\$18,634,174	\$21,898,372
Pledge Balances	348,264	445,244	443,656
Interests in Perpetual Trusts held by Others	222,501	215,317	245,277
Total Endowment	\$17,518,021	\$19,294,735	\$22,587,305

(1) Market value also includes endowment funds that are not unitized. This accounts for the difference between (unit price x number of units) and market value.

(2) Arts and Sciences includes: Continuing Education, DEAS, College Library, Museums, GSAS, Athletics, College Life and Student Services, and Dumbarton Oaks.

(3) Government includes Institute of Politics.

(4) Other Academic Departments include: Arnold Arboretum, Joint Center for Housing Studies, Harvard University Art Museums, Nieman Foundation and Villa I Tatti.

(5) In addition to Central Administration, includes the Memorial Church, President's Funds, University Professorships, University Press, University Health Services and University Operations Services.

SOURCE: ANNUAL UNIVERSITY FINANCIAL REPORT

Historical Endowment Performance: FY1986 - FY2006



Fiscal Year	Unit Value at Beginning of the Year ⁽¹⁾	Dollar Value and Percentage Beginning Value Per Unit						Actual Distribution Per Unit ⁽³⁾	Spending Rate ⁽⁴⁾
		Income		Capital Gain		Total Return ⁽²⁾			
1986	\$182.47	\$12.53	6.9%	\$42.28	23.2%	\$54.81	30.0%	\$7.86	4.31%
1987	224.75	11.16	5.0%	32.03	14.3%	43.19	19.2%	8.09	3.60%
1988	256.78	10.41	4.1%	3.57	1.4%	13.98	5.4%	8.49	3.31%
1989	260.35	13.94	5.4%	18.27	7.0%	32.21	12.4%	10.16	3.90%
1990	278.62	14.57	5.2%	6.04	2.2%	20.61	7.4%	10.65	3.82%
1991	284.66	12.75	4.5%	(9.72)	(3.4%)	3.03	1.1%	11.96	4.20%
1992	274.94	11.87	4.3%	20.26	7.4%	32.13	11.7%	12.44	4.52%
1993	295.20	11.70	4.0%	36.68	12.4%	48.38	16.4%	14.08	4.77%
1994	331.88	13.19	4.0%	19.05	5.7%	32.24	9.7%	15.01	4.52%
1995	350.93	11.90	3.4%	45.87	13.1%	57.77	16.5%	16.07	4.58%
1996	396.80	15.23	3.8%	86.03	21.7%	101.26	25.5%	17.20	4.33%
1997 ⁽⁵⁾	482.83	14.60	3.0%	106.53	22.1%	121.13	25.1%	19.84	4.11%
1998	589.36	10.64	1.8%	108.45	18.4%	119.09	20.2%	21.90	3.72%
1999	697.81	21.57	3.1%	60.94	8.7%	82.51	11.8%	23.14	3.32%
2000	758.75	14.42	1.9%	227.20	29.9%	241.62	31.8%	30.15	3.97%
2001	985.95	19.10	1.9%	(45.75)	(4.6%)	(26.65)	(2.7%)	32.92	3.34%
2002	940.20	20.63	2.2%	(25.42)	(2.7%)	(4.79)	(0.5%)	45.32	4.82%
2003	914.78	13.88	1.5%	98.73	10.8%	112.61	12.3%	47.11	5.15%
2004	1013.51	10.39	1.0%	202.17	19.9%	212.56	21.0%	49.70	4.90%
2005	1215.68	21.16	1.7%	210.00	17.3%	231.16	19.0%	54.17	4.46%
2006	\$1,425.68	*	*	*	*	*	*	\$59.00	4.14%

Average Annual Growth Rates

20 YEAR	10.8%	-	-	-	-	-	-	10.6%	-
10 YEAR	13.6%	-	-	-	-	-	-	13.1%	-
5 YEAR	7.7%	-	-	-	-	-	-	12.4%	-
1 YEAR	17.3%	-	-	-	-	-	-	8.9%	-

(1) Harvard's endowment comprises over 10,840 separate funds. Each fund has been unitized and the separate funds hold "units of the endowment" as their value. Column one shows the value of units as of July 1.

(2) The total return percentage reported by the Harvard Management Company is slightly higher than the one listed above as it is calculated based on reinvestment of all earnings on a monthly basis.

(3) As of July 1, from income earned the previous fiscal year.

(4) Distribution per unit (actual or effective) divided by beginning of year unit value (actual or effective).

(5) Net of the \$1.28 per unit fringe supplement, the FY97 payout is \$18.56, and the spending rate is 3.84%.

* Value not available at time of publication.

SOURCE: INTERNAL ENDOWMENT REPORTS



On the Cover:

Harvard women's crew team coaches work hard in freezing temperatures to break the ice on the Charles River. This modern day rite of passage into spring is done in order to begin crew practice as soon as possible.

Harvard College is the oldest institution of higher learning in the United States. It was established in 1636 by vote of the Great and General Court of the Massachusetts Bay Colony and was named for its first benefactor, John Harvard of Charlestown, Massachusetts. Upon his death in 1638, the young minister left his library and half his estate to the new College. Founded 16 years after the arrival of the Pilgrims at Plymouth, the College has grown from nine students with a single master to an enrollment of more than 19,700 degree candidates, including undergraduates and students in 10 graduate and professional schools.

Photo by Kris Snibbe / Harvard News Office