

HARVARD UNIVERSITY  
FACT BOOK  
2006-2007





For user convenience, many Fact Book pages contain embedded Excel data tables. Double-click on the paperclip icons (such as the one shown here) to open these tables.

<b>ORGANIZATION</b>	<b>Pages</b>
Central Administration	2
Faculties and Allied Institutions	3
Research and Academic Centers	4 – 5
<b>PEOPLE</b>	<b>Pages</b>
Degree Student Enrollment	6 – 9
Degrees Conferred	10 – 14
International Students	15 – 16
Summer School and Non-Degree Students	17
Faculty	18 – 19
Staff	20 – 21
<b>RESOURCES</b>	<b>Pages</b>
Tuition, Fees, and Financial Aid	22 – 25
Sponsored Programs	26 – 30
Library	31 – 32
Physical Plant	33 – 34
Environmental Performance	35 – 36
FY2006 Income and Expenses	37 – 38
Endowment	39 – 40

The Harvard University Fact Book is published by:  
Office of Budgets, Financial Planning and Institutional Research  
Holyoke Center 780, Cambridge, MA 02138

The address for the electronic version is:  
<http://vpf-web.harvard.edu/budget/factbook/index.html>

If you would like more information about data contained in the Fact Book, contact:  
JASON DEWITT, Senior Data Resource Specialist

(617) 495-0591, E-mail: [jason\\_dewitt@harvard.edu](mailto:jason_dewitt@harvard.edu)

REBECCA MATHEWS, Data Resource Specialist

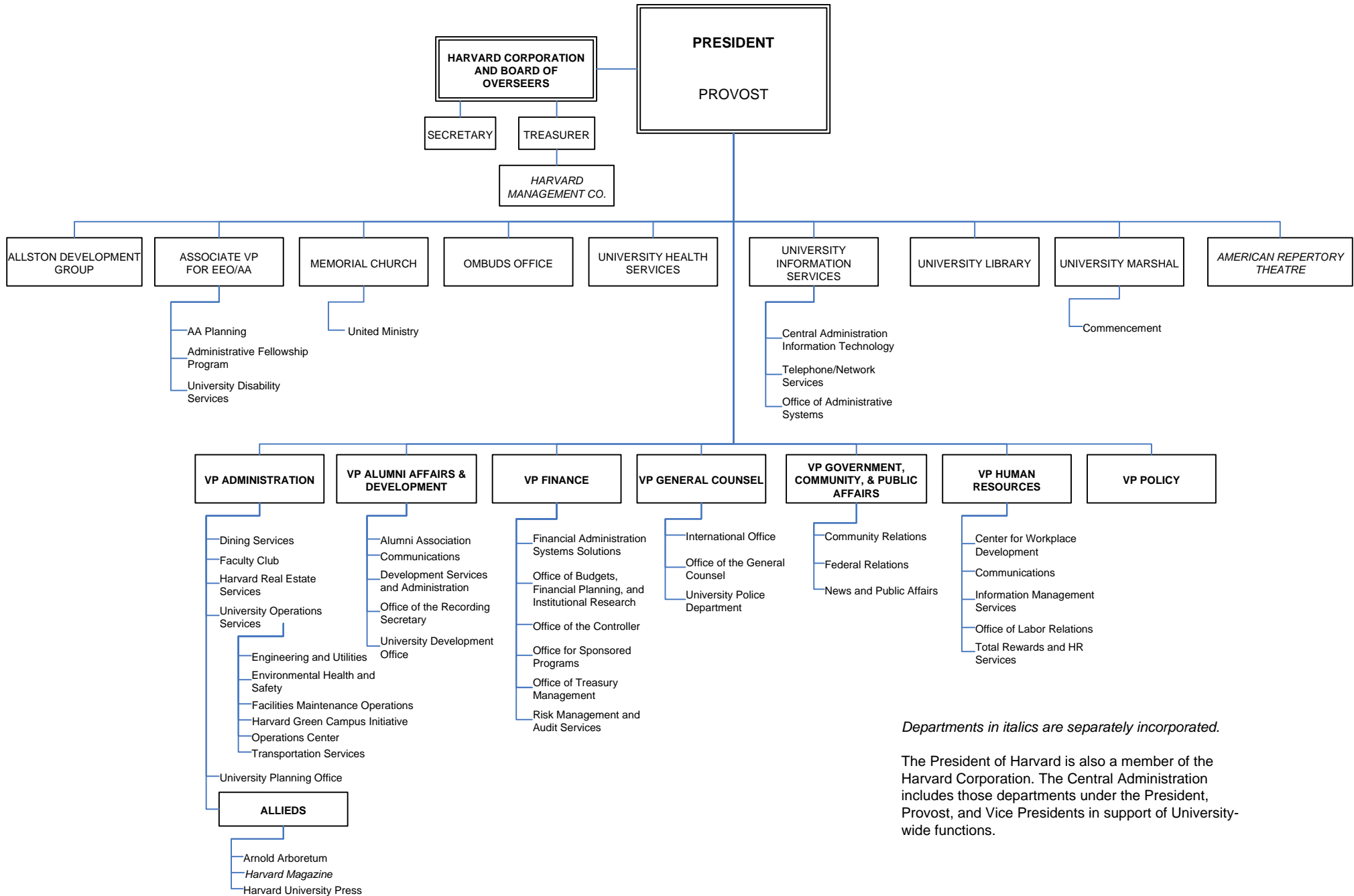
(617) 496-3568, E-mail: [rebecca\\_mathews@harvard.edu](mailto:rebecca_mathews@harvard.edu)

NINA ZIPSER, Director of Institutional Research

(617) 384-9236, E-mail: [nina\\_zipser@harvard.edu](mailto:nina_zipser@harvard.edu)

Changes to content after publication are reflected on the web version of the Fact Book.

Copyright 2007 by the President and Fellows of Harvard College

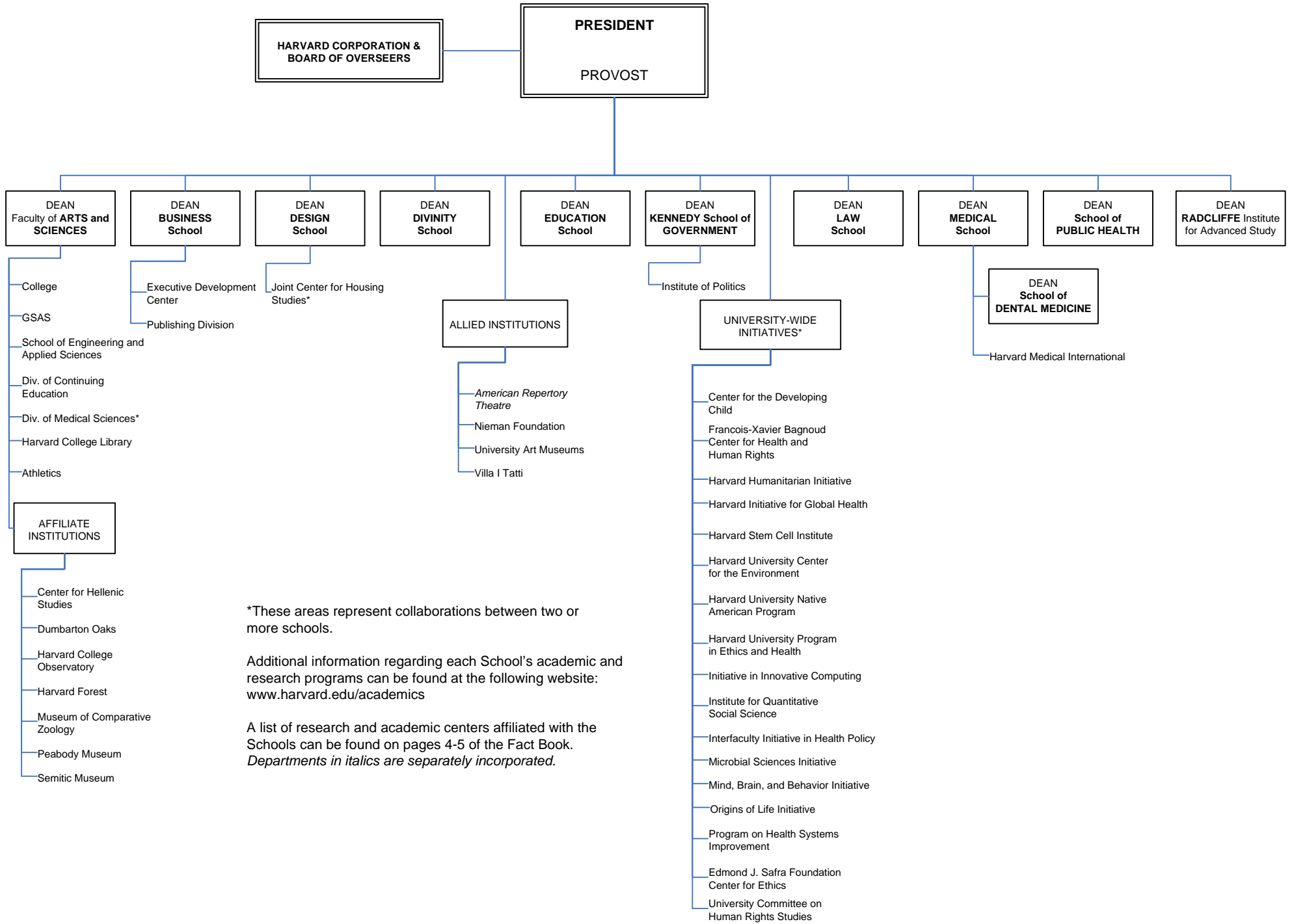


*Departments in italics are separately incorporated.*

The President of Harvard is also a member of the Harvard Corporation. The Central Administration includes those departments under the President, Provost, and Vice Presidents in support of University-wide functions.



# Faculties and Allied Institutions



\*These areas represent collaborations between two or more schools.

Additional information regarding each School's academic and research programs can be found at the following website: [www.harvard.edu/academics](http://www.harvard.edu/academics)

A list of research and academic centers affiliated with the Schools can be found on pages 4-5 of the Fact Book. *Departments in italics are separately incorporated.*

## Harvard University Research and Academic Centers <sup>(1)</sup>

### FACULTY of ARTS and SCIENCES

Africa Initiative\*\*  
 Aga Khan Program for Islamic Architecture <sup>(2)</sup>  
 Derek Bok Center for Teaching and Learning  
 Center for American Political Studies  
 Center for Brain Science\*  
 Center for Hellenic Studies  
 Center for Jewish Studies  
 Center for Middle Eastern Studies  
 Center for Nanoscale Systems  
 Center for Systems Biology  
 Davis Center for Russian and Eurasian Studies  
 W.E.B. Dubois Institute for African and  
 African-American Research  
 Dumbarton Oaks  
 Fairbank Center for East Asian Research  
 Minda de Gunzburg Center for European  
 Studies  
 Harvard Asia Center\*\*  
 South Asia Initiative <sup>(3)</sup>  
 Harvard Smithsonian Center for Astrophysics  
 Harvard University Center for the  
 Environment\*\*  
 Harvard-Yenching Institute  
 Humanities Center  
 Institute for Quantitative Social Science\*\*  
 Center for Geographic Analysis<sup>(4)</sup>  
 Harvard-MIT Data Center<sup>(4)</sup>  
 Islamic Studies Program  
 Kavli Institute  
 Korea Institute  
 Materials Research Science and Engineering  
 Center  
 Nanoscale Science and Engineering  
 Program for Evolutionary Dynamics  
 Reischauer Institute of Japanese Studies  
 David Rockefeller Center for Latin American  
 Studies\*\*  
 Rowland Institute  
 Technology and Entrepreneurship at Harvard  
 Ukrainian Research Institute  
 Charles Warren Center for Studies in  
 American History  
 Weatherhead Center for International Affairs  
 Harvard Academy for International and  
 Area Studies<sup>(5)</sup>

Olin Institute for Strategic Studies<sup>(5)</sup>  
 Program on U.S. - Japan Relations<sup>(5)</sup>

### BUSINESS

California Research Center  
 C. Roland Christensen Center for Teaching  
 and Learning  
 Global Initiative  
 Asia-Pacific Research Center  
 Europe Research Center  
 India Research Center  
 Japan Research Office  
 Latin America Research Center  
 Health Care Initiative  
 Institute for Strategy and Competitiveness\*  
 Leadership Initiative  
 Arthur M. Rock Center for Entrepreneurship  
 Social Enterprise Initiative

### DESIGN

Center for Technology and Environment  
 Joint Center for Housing Studies\*  
 Real Estate Academic Initiative\*

### DIVINITY

Center for the Study of World Religions  
 Summer Leadership Institute  
 Women's Studies in Religion Program

### EDUCATION

The Change Leadership Group  
 The Civil Rights Project at Harvard  
 The Collaborative Group on Academic  
 Careers in Higher Education  
 Executive Leadership Program for Educators  
 at Harvard University\*  
 Harvard Family Research Project  
 National Center for the Study of Adult  
 Learning and Literacy  
 The Principals' Center  
 Project for Policy Innovation in Education  
 Project Zero  
 Public Education Leadership Project  
 The Achievement Gap Initiative\*  
 WIDE World<sup>(6)</sup>

(1) The Research and Academic Centers listed are those affiliated with the Schools.

(2) The Aga Khan Program for Islamic Architecture is a joint program with M.I.T.

(3) This program is housed and administered within the Asia Center.

(4) These Programs are housed and administered within the Institute for Quantitative Social Science

(5) These Programs are housed and administered within the Weatherhead Center.

(6) WIDE is the Wide-scale Interactive Development for Educators.

\* These Programs represent collaborations between two or more Schools.

\*\* These Programs are housed in particular Schools, but are considered University-Wide Initiatives.

SOURCE: SCHOOLS

## Harvard University Research and Academic Centers <sup>(1)</sup>

### GOVERNMENT

The Roy and Lila Ash Institute for Democratic Governance and Innovation  
 Robert and Renee Belfer Center for Science and International Affairs  
 Carr Center for Human Rights Policy  
 Center for International Development at Harvard University\*\*  
 Center for Public Leadership  
 Harvard Environmental Economics Program\*\*  
 Hauser Center for Nonprofit Organizations\*\*  
 Institute of Politics  
 Joint Center for Housing Studies\*  
 Mossavar-Rahmani Center for Business and Government  
 Joan Shorenstein Center on the Press, Politics and Public Policy  
 A. Alfred Taubman Center for State and Local Government<sup>(3)</sup>  
 Malcolm Wiener Center for Social Policy  
 Women and Public Policy Program

### UNIVERSITY-WIDE INITIATIVES\*

Center on the Developing Child  
 Francois-Xavier Bagnoud Center for Health and Human Rights  
 Harvard Humanitarian Initiative  
 Harvard Initiative for Global Health  
 Harvard Stem Cell Institute\*\*  
 Harvard University Center for the Environment\*\*  
 Harvard University Native American Program  
 Harvard University Program in Ethics and Health  
 Initiative in Innovative Computing  
 Institute for Quantitative Social Science  
 Interfaculty Initiative in Health Policy  
 Microbial Sciences Initiative  
 Mind, Brain, and Behavior Initiative  
 Origins of Life Initiative  
 Program on Health Systems Improvement  
 Edmond J. Safra Foundation Center for Ethics  
 University Committee on Human Rights Studies

### MEDICINE

Center for Biomedical Informatics\*  
 Center for Craniofacial Engineering  
 Center for Excellence in Women's Health\*  
 Center for Genetics and Genomics, Harvard Medical School-Partners Healthcare\*  
 Center for Health and the Global Environment\*  
 Center for Hereditary Deafness\*  
 Center for Immunodeficiency  
 Center for Integration of Medicine and Innovative Technology  
 Center for Magnetic Resonance\*  
 Center for Mental Health and Media\*  
 Center for Neurodegeneration and Repair

Center for Neurofibromatosis and Allied Disorders\*  
 Center for Palliative Care  
 Dana Farber/Harvard Cancer Center\*  
 Division for Research and Education in Complementary and Integrative Medical Therapies  
 Division of AIDS\*  
 Division of Emergency Medicine  
 Division of Health Care Policy Research and Education\*  
 Division of Health Sciences and Technology  
 Division of Medical Ethics\*  
 Division of Nutrition\*  
 Division on Primary Care\*  
 Harvard Clinical Research Institute  
 Harvard-Mahoney Neuroscience Institute\*  
 Institute of Chemistry and Cell Biology and Initiative for Chemical Genetics\*  
 Institute of Proteomics  
 JDRF Center for Immunological Tolerance at Harvard<sup>(2)</sup>  
 New England Primate Research Center  
 New England Regional Center of Excellence for Biodefense and Emerging Infectious Diseases\*

### LAW

Berkman Center for Internet & Society  
 Child Advocacy Program  
 East Asian Legal Studies Program  
 Environmental Law and Policy Program  
 European Law Research Center  
 Fund for Tax and Fiscal Policy Research  
 Charles Hamilton Houston Institute for Race and Justice  
 Human Rights Program  
 Islamic Legal Studies Program  
 Labor and Worklife Program  
 Legal History Program  
 John M. Olin Center for Law, Economics and Business  
 Petrie-Flom Center for Health Law Policy, Biotechnology, and Ethics\*  
 Program on Corporate Governance  
 Program on International Financial Systems  
 Program on Negotiation  
 Program on the Legal Profession

### PUBLIC HEALTH

Center for Health Communication  
 Francois-Xavier Bagnoud Center for Health and Human Rights\*\*  
 Harvard Center for Population and Development Studies  
 Harvard Center for Society and Health  
 Harvard Injury Control Center  
 Harvard School of Public Health AIDS Initiative

### RADCLIFFE INSTITUTE FOR ADVANCED STUDY

Radcliffe Institute Fellowship Program  
 Arthur and Elizabeth Schlesinger Library on the History of Women in America

(1) The Research and Academic Centers listed are those affiliated with the Schools.

(2) JDRF is the Juvenile Diabetes Research Foundation.

(3) The Taubman Center includes the Rappaport Institute for Greater Boston.

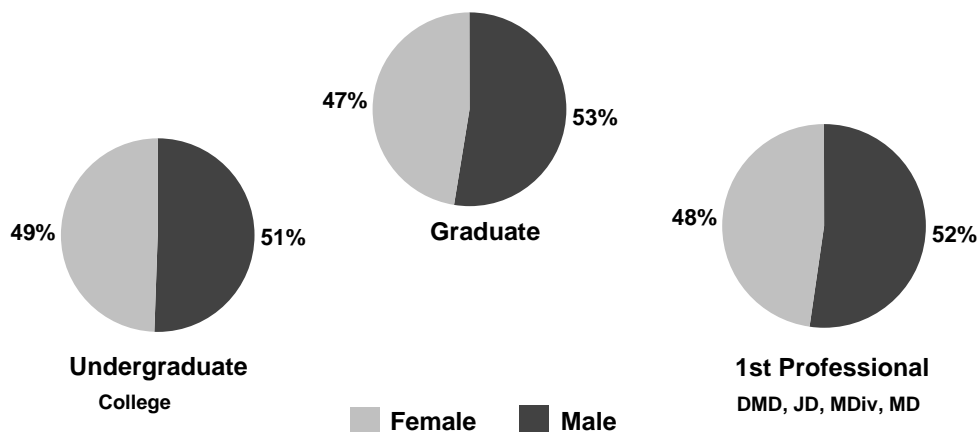
\* These Programs represent collaborations between two or more Schools.

\*\* These Programs are housed in particular Schools, but are considered University-Wide initiatives.

**Degree Student Head Count: Fall 2006**  
 Counts taken as of October 15, 2006



	Male	Female	Total	Full-Time	Part-Time	Total
<b>College <sup>(1)</sup></b>						
Freshmen	813	882	<b>1,695</b>	1,695	-	<b>1,695</b>
Sophomores	861	843	<b>1,704</b>	1,704	-	<b>1,704</b>
Juniors <sup>(2)</sup>	843	806	<b>1,649</b>	1,649	-	<b>1,649</b>
Seniors	881	786	<b>1,667</b>	1,664	3	<b>1,667</b>
<b>Subtotal</b>	<b>3,398</b>	<b>3,317</b>	<b>6,715</b>	<b>6,712</b>	<b>3</b>	<b>6,715</b>
<b>GSAS <sup>(3)</sup></b>						
Division of Med. Sci.	261	307	<b>568</b>	568	-	<b>568</b>
All Other	1,839	1,343	<b>3,182</b>	3,169	13	<b>3,182</b>
<b>Subtotal</b>	<b>2,100</b>	<b>1,650</b>	<b>3,750</b>	<b>3,737</b>	<b>13</b>	<b>3,750</b>
Business	1,177	678	<b>1,855</b>	1,855	-	<b>1,855</b>
Dental <sup>(4)</sup>	96	111	<b>207</b>	207	-	<b>207</b>
Design	310	308	<b>618</b>	574	44	<b>618</b>
Divinity	207	232	<b>439</b>	411	28	<b>439</b>
Education	248	723	<b>971</b>	850	121	<b>971</b>
Government	614	415	<b>1,029</b>	978	51	<b>1,029</b>
Law	1,075	891	<b>1,966</b>	1,966	-	<b>1,966</b>
Medical	413	405	<b>818</b>	818	-	<b>818</b>
Public Health	291	480	<b>771</b>	543	228	<b>771</b>
<b>Extension</b>						
Undergraduate	185	200	<b>385</b>	168	217	<b>385</b>
Graduate	303	287	<b>590</b>	95	495	<b>590</b>
<b>Subtotal, All Degree Students</b>	<b>10,417</b>	<b>9,697</b>	<b>20,114</b>	<b>18,914</b>	<b>1,200</b>	<b>20,114</b>
<b>Adj. for Joint Degree Students</b>	<b>(43)</b>	<b>(29)</b>	<b>(72)</b>	<b>(72)</b>	<b>-</b>	<b>(72)</b>
<b>TOTAL</b>	<b>10,374</b>	<b>9,668</b>	<b>20,042</b>	<b>18,842</b>	<b>1,200</b>	<b>20,042</b>



(1) Students in the Advanced Standing Program are counted as Juniors in their second year and Seniors in their third and fourth year. College total excludes students who are studying abroad.  
 (2) Counts for Juniors include 19 undergraduates unclassified by year.  
 (3) Candidates for the Ph.D. are enrolled in GSAS but may cross register for courses in other faculties.  
 (4) Clinical specialty students in the Dental School are not included in totals. See page 17 for Dental Clinical Specialty counts.  
 SOURCE: REGISTRAR OFFICES

Historical Enrollments: Fall 2001 - 2006 <sup>(1)</sup>

## Degree Student Head Count by School

Counts taken as of October 15, 2006

	2001	2002	2003	2004	2005	2006
<b>College</b> <sup>(2)</sup>	6,650	6,649	6,597	6,562	6,613	6,715
<b>GSAS</b> <sup>(3)</sup>	3,358	3,357	3,510	3,638	3,753	3,750
<b>Business</b>	1,847	1,836	1,832	1,823	1,851	1,855
<b>Dental</b> <sup>(4)</sup>	213	207	202	205	199	207
<b>Design</b>	536	556	595	619	579	618
<b>Divinity</b>	451	443	455	428	423	439
<b>Education</b>	1,121	1,057	1,080	1,069	975	971
<b>Government</b>	881	896	924	956	944	1,029
<b>Law</b>	1,914	1,915	1,899	1,921	1,948	1,966
<b>Medical</b>	777	787	780	766	784	818
<b>Public Health</b>	808	825	737	825	787	771
<b>Extension</b>						
<b>Undergraduate</b>	435	401	403	385	389	385
<b>Graduate</b>	626	671	676	592	599	590
<b>Subtotal, All Degree Students</b>	<b>19,617</b>	<b>19,600</b>	<b>19,690</b>	<b>19,789</b>	<b>19,844</b>	<b>20,114</b>
<b>Adj. for Joint Degree Students</b>	(78)	(64)	(52)	(58)	(65)	(72)
<b>TOTAL</b>	<b>19,539</b>	<b>19,536</b>	<b>19,638</b>	<b>19,731</b>	<b>19,779</b>	<b>20,042</b>
<b>Enrollment Level</b> <sup>(5)</sup>						
<b>Undergraduates</b>						
<b>Full-Time</b>	6,831	6,822	6,767	6,722	6,792	6,880
<b>Part-Time</b>	254	228	233	225	210	220
<b>Subtotal</b>	<b>7,085</b>	<b>7,050</b>	<b>7,000</b>	<b>6,947</b>	<b>7,002</b>	<b>7,100</b>
<b>Graduate Students</b>						
<b>Full-Time</b>	8,865	8,818	8,993	9,082	9,071	9,238
<b>Part-Time</b>	952	992	1,004	1,059	1,026	963
<b>Subtotal</b>	<b>9,817</b>	<b>9,810</b>	<b>9,997</b>	<b>10,141</b>	<b>10,097</b>	<b>10,201</b>
<b>1st Professional Degree</b> <sup>(6)</sup>						
<b>Full-Time</b>	2,690	2,722	2,668	2,680	2,728	2,796
<b>Part-Time</b>	25	18	25	21	17	17
<b>Subtotal</b>	<b>2,715</b>	<b>2,740</b>	<b>2,693</b>	<b>2,701</b>	<b>2,745</b>	<b>2,813</b>
<b>TOTAL</b>	<b>19,617</b>	<b>19,600</b>	<b>19,690</b>	<b>19,789</b>	<b>19,844</b>	<b>20,114</b>

(1) Several Harvard schools enrolled students displaced by Hurricane Katrina during Fall 2005. These students are included in the counts for non-degree students on page 17.

(2) College totals exclude students who were studying abroad at the time data was compiled.

(3) Candidates for the Ph.D. are enrolled in GSAS but may cross register for courses in other faculties.

(4) These figures exclude postdoctoral students enrolled in a clinical specialty. See page 17 for Dental Clinical Specialty counts.

(5) Includes degree candidates from the Extension School. Not adjusted for joint degree students.

(6) 1st Professional degrees include DMD, JD, MDiv, and MD.

SOURCE: REGISTRAR OFFICES



**Student Enrollment by Degree: Fall 2006**  
 Counts taken as of October 15, 2006



		Male		Female		Total
		Full-Time	Part-Time	Full-Time	Part-Time	
College <sup>(1)</sup>	A.B., S.B.	3,397	1	3,315	2	6,715
GSAS	A.M., S.M.	99	11	62	2	174
	Ph.D.	1,990	-	1,586	-	3,576
Business	M.B.A.	1,155	-	665	-	1,820
	D.B.A.	22	-	13	-	35
Dental	D.M.D.	59	-	84	-	143
	M.M.Sc.	24	-	17	-	41
	D.M.Sc.	13	-	10	-	23
Design	M.Arch.	167	20	143	18	348
	M.A.U.D., M.L.A.U.D.	25	-	20	-	45
	M.Des.	30	-	11	1	42
	M.L.A.	25	2	63	-	90
	M.U.P.	17	3	35	-	55
	D.Des.	21	-	17	-	38
Divinity	M.Div.	75	4	80	13	172
	M.T.S.	95	4	114	7	220
	Th.M.	2	-	-	-	2
	Th.D.	27	-	18	-	45
Education	Ed.M.	127	18	405	68	618
	Ed.D.	90	9	216	26	341
	C.A.S.	4	-	8	-	12
Government	M.P.A. <sup>(2)</sup>	228	17	129	7	381
	M.P.A.I.D.	91	2	57	3	153
	M.P.P.	245	13	195	7	460
	M.U.P.	6	-	7	1	14
	Ph.D.	12	-	8	1	21
Law	J.D.	942	-	787	-	1,729
	LL.M.	94	-	71	-	165
	S.J.D.	39	-	33	-	72
Medical	M.D.	386	-	383	-	769
	M.M.Sc.	27	-	22	-	49
Public Health	M.P.H., M.O.H.	66	63	71	66	266
	M.S.	38	43	131	20	232
	D.P.H.	3	2	7	5	17
	D.S.	65	11	162	18	256
Extension	A.A., A.L.B.	88	97	80	120	385
	A.L.M., Grad. Cert.	51	252	44	243	590
<b>TOTAL <sup>(3)</sup></b>		<b>9,845</b>	<b>572</b>	<b>9,069</b>	<b>628</b>	<b>20,114</b>

(1) College total excludes students who are studying abroad.

(2) M.P.A. Program includes the two-year M.P.A. program and the one-year M.P.A. Mid-Career program.

(3) Not adjusted for joint degree students.

SOURCE: REGISTRAR OFFICES

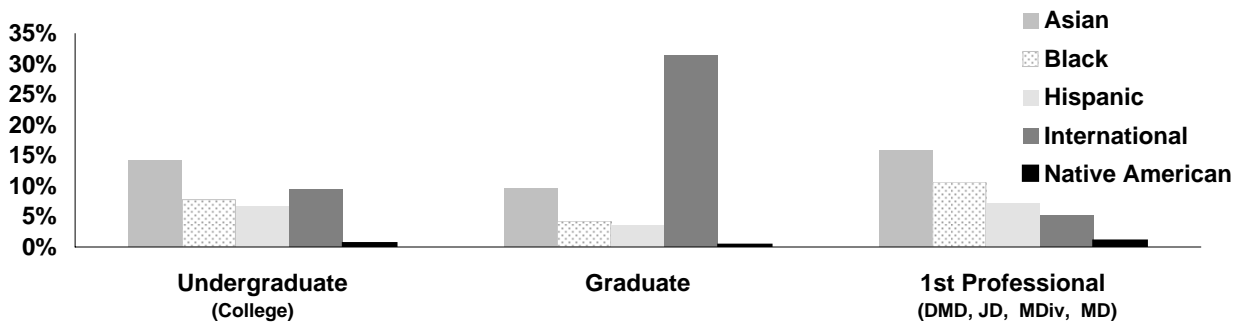
# Degree Student Enrollment by Ethnicity: Fall 2006

Counts taken as of October 15, 2006



	College	GSAS	Business	Dental	Design	Divinity	Education	Government	Law	Medical	Public Health	Extension	Total
<b>Asian/Pacific Islander</b>													
Male	415	139	106	16	37	12	22	40	97	105	27	54	1,070
Female	532	157	113	36	62	16	74	38	106	100	48	43	1,325
<b>Subtotal</b>	<b>947</b>	<b>296</b>	<b>219</b>	<b>52</b>	<b>99</b>	<b>28</b>	<b>96</b>	<b>78</b>	<b>203</b>	<b>205</b>	<b>75</b>	<b>97</b>	<b>2,395</b>
Percent	14%	8%	12%	25%	16%	6%	10%	8%	10%	25%	10%	10%	11.9%
<b>Black/Non-Hispanic</b>													
Male	218	35	50	3	5	9	29	27	83	43	8	25	535
Female	303	78	48	2	3	12	58	27	109	48	33	20	741
<b>Subtotal</b>	<b>521</b>	<b>113</b>	<b>98</b>	<b>5</b>	<b>8</b>	<b>21</b>	<b>87</b>	<b>54</b>	<b>192</b>	<b>91</b>	<b>41</b>	<b>45</b>	<b>1,276</b>
Percent	8%	3%	5%	2%	1%	5%	9%	5%	10%	11%	5%	5%	6.3%
<b>Hispanic</b>													
Male	205	68	26	5	12	8	10	23	65	34	8	27	491
Female	238	56	17	6	11	9	33	30	56	33	19	22	530
<b>Subtotal</b>	<b>443</b>	<b>124</b>	<b>43</b>	<b>11</b>	<b>23</b>	<b>17</b>	<b>43</b>	<b>53</b>	<b>121</b>	<b>67</b>	<b>27</b>	<b>49</b>	<b>1,021</b>
Percent	7%	3%	2%	5%	4%	4%	4%	5%	6%	8%	4%	5%	5.1%
<b>International Students</b>													
Male	385	720	427	24	121	25	31	285	156	27	103	66	2,370
Female	249	454	208	26	84	11	84	161	135	26	109	75	1,622
<b>Subtotal</b>	<b>634</b>	<b>1,174</b>	<b>635</b>	<b>50</b>	<b>205</b>	<b>36</b>	<b>115</b>	<b>446</b>	<b>291</b>	<b>53</b>	<b>212</b>	<b>141</b>	<b>3,992</b>
Percent	9%	31%	34%	24%	33%	8%	12%	43%	15%	6%	27%	14%	19.8%
<b>Native American</b>													
Male	18	1	2	-	1	4	2	5	10	6	-	1	50
Female	23	4	1	-	2	1	4	6	5	6	4	1	57
<b>Subtotal</b>	<b>41</b>	<b>5</b>	<b>3</b>	<b>-</b>	<b>3</b>	<b>5</b>	<b>6</b>	<b>11</b>	<b>15</b>	<b>12</b>	<b>4</b>	<b>2</b>	<b>107</b>
Percent	1%	0%	0%	0%	0%	1%	1%	1%	1%	1%	1%	0%	0.5%
<b>White/Non-Hispanic</b>													
Male	1,685	889	426	44	115	137	107	187	523	183	106	283	4,685
Female	1,457	704	224	37	114	163	334	118	383	184	189	305	4,212
<b>Subtotal</b>	<b>3,142</b>	<b>1,593</b>	<b>650</b>	<b>81</b>	<b>229</b>	<b>300</b>	<b>441</b>	<b>305</b>	<b>906</b>	<b>367</b>	<b>295</b>	<b>588</b>	<b>8,897</b>
Percent	47%	42%	35%	39%	37%	68%	45%	30%	46%	45%	38%	60%	44.2%
<b>Unknown/Other</b>													
Male	472	248	140	4	19	12	47	47	141	15	39	32	1,216
Female	515	197	67	4	32	20	136	35	97	8	78	21	1,210
<b>Subtotal</b>	<b>987</b>	<b>445</b>	<b>207</b>	<b>8</b>	<b>51</b>	<b>32</b>	<b>183</b>	<b>82</b>	<b>238</b>	<b>23</b>	<b>117</b>	<b>53</b>	<b>2,426</b>
Percent	15%	12%	11%	4%	8%	7%	19%	8%	12%	3%	15%	5%	12.1%
<b>TOTAL <sup>(1)</sup></b>	<b>6,715</b>	<b>3,750</b>	<b>1,855</b>	<b>207</b>	<b>618</b>	<b>439</b>	<b>971</b>	<b>1,029</b>	<b>1,966</b>	<b>818</b>	<b>771</b>	<b>975</b>	<b>20,114</b>

## Percentage of Minority and International Students by Enrollment Level



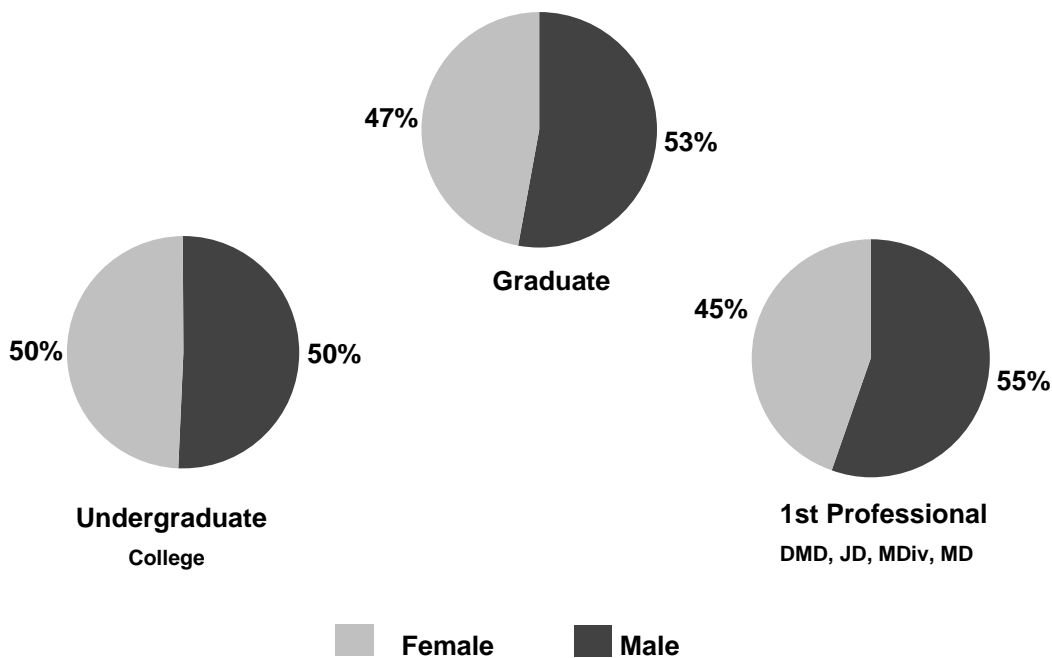
(1) Not adjusted for joint degree students.

SOURCE: REGISTRAR OFFICES

## Degrees Conferred by School <sup>(1)</sup> Academic Year 2005-2006



	<u>Male</u>	<u>Female</u>	<u>Total</u>
<b>College</b>	828	812	<b>1,640</b>
<b>GSAS</b>	543	392	<b>935</b>
<b>Business</b>	602	304	<b>906</b>
<b>Dental</b>	25	20	<b>45</b>
<b>Design</b>	116	91	<b>207</b>
<b>Divinity</b>	76	81	<b>157</b>
<b>Education</b>	159	502	<b>661</b>
<b>Government</b>	312	206	<b>518</b>
<b>Law</b>	422	326	<b>748</b>
<b>Medical</b>	91	83	<b>174</b>
<b>Public Health</b>	203	224	<b>427</b>
<b>Extension</b>			
<b>Undergraduate</b>	62	61	<b>123</b>
<b>Graduate</b>	174	168	<b>342</b>
<b>TOTAL</b>	<b>3,613</b>	<b>3,270</b>	<b>6,883</b>



(1) Not adjusted for joint degree students.  
SOURCE: REGISTRAR OFFICES


Degrees Conferred by Degree: Academic Year 2005-2006 <sup>(1)</sup>



College		Male	Female	Total
College	A.B.	819	810	1,629
	S.B.	9	2	11
GSAS	A.M.	226	176	402
	M.F.S.	3	1	4
	S.M.	47	9	56
	Ph.D.	267	206	473
Business	M.B.A.	601	302	903
	D.B.A.	1	2	3
Dental	D.M.D.	17	15	32
	M.M.Sc.	7	2	9
	D.M.Sc.	1	3	4
Design	M.Arch.	50	31	81
	M.A.U.D., M.L.A.U.D.	18	5	23
	M.Des.	24	21	45
	M.L.A.	10	15	25
	M.U.P.	9	12	21
	D.Des.	5	7	12
Divinity	M.Div.	24	18	42
	M.T.S.	43	54	97
	Th.M.	5	4	9
	Th.D.	4	5	9
Education	Ed.M.	138	442	580
	Ed.D.	20	50	70
	C.A.S.	1	10	11
Government	M.P.A. (1 YEAR)	119	53	172
	M.P.A. (2 YEAR)	65	38	103
	M.P.A.I.D.	38	25	63
	M.P.P.	87	88	175
	M.U.P.	3	2	5
Law	J.D.	330	252	582
	LL.M.	87	72	159
	S.J.D.	5	2	7
Medical	M.D.	76	76	152
	M.M.Sc.	15	7	22
Public Health	M.P.H.	118	96	214
	M.S.	72	92	164
	D.P.H.	2	1	3
	D.S.	11	35	46
Extension	A.A.	11	4	15
	A.L.B.	51	57	108
	A.L.M.	83	57	140
	Grad. Cert.	91	111	202
<b>TOTAL</b>		<b>3,613</b>	<b>3,270</b>	<b>6,883</b>

(1) Not adjusted for joint degree students.

SOURCE: REGISTRAR OFFICES

Harvard College Undergraduate Degrees Conferred by Concentration <sup>(1)</sup>   
 Academic Year 2005-2006

	<b>Concentration</b>	<b>Male</b>	<b>Female</b>	<b>Total</b>
<b>Humanities</b>	English & American Literature & Language	35	69	<b>104</b>
	History & Literature	23	40	<b>63</b>
	Visual & Environmental Studies	17	16	<b>33</b>
	Romance Languages & Literatures	8	16	<b>24</b>
	History of Art & Architecture	8	13	<b>21</b>
	Philosophy	16	5	<b>21</b>
	Comparative Study of Religion	5	10	<b>15</b>
	Literature	4	11	<b>15</b>
	Linguistics	3	11	<b>14</b>
	Music	9	4	<b>13</b>
	Classics	8	3	<b>11</b>
	East Asian Studies	7	3	<b>10</b>
	Folklore & Mythology	-	4	<b>4</b>
	Sanskrit & Indian Studies	3	1	<b>4</b>
	Classics (Latin)	-	3	<b>3</b>
	Classical Archaeology	-	2	<b>2</b>
	Germanic Languages & Literatures	1	1	<b>2</b>
	Near Eastern Languages & Civilizations	-	2	<b>2</b>
	Classics (Greek)	-	1	<b>1</b>
	Slavic Languages & Literatures	1	-	<b>1</b>
	<b>Subtotal</b>	<b>148</b>	<b>215</b>	<b>363</b>
<b>Natural Sciences</b>	Biology	34	60	<b>94</b>
	Biochemical Sciences	30	30	<b>60</b>
	Physics	33	10	<b>43</b>
	Chemistry	19	20	<b>39</b>
	Applied Mathematics	17	10	<b>27</b>
	Computer Science	22	3	<b>25</b>
	Engineering Sciences <sup>(2)</sup>	18	7	<b>25</b>
	Mathematics	15	6	<b>21</b>
	Chemistry & Physics	13	7	<b>20</b>
	Environmental Science & Public Policy	4	8	<b>12</b>
	Earth & Planetary Sciences	3	6	<b>9</b>
	Astronomy & Astrophysics	6	2	<b>8</b>
	Statistics	-	2	<b>2</b>
		<b>Subtotal</b>	<b>214</b>	<b>171</b>
<b>Social Sciences</b>	Economics	161	77	<b>238</b>
	Government	123	72	<b>195</b>
	Psychology	34	88	<b>122</b>
	Social Studies	48	53	<b>101</b>
	History	60	36	<b>96</b>
	Anthropology	15	43	<b>58</b>
	History & Science	9	21	<b>30</b>
	Sociology	8	21	<b>29</b>
	Studies of Women, Gender & Sexuality	-	4	<b>4</b>
	African & African American Studies	-	3	<b>3</b>
		<b>Subtotal</b>	<b>458</b>	<b>418</b>
<b>Special Concentrations</b>	Special Concentrations	8	8	<b>16</b>
	<b>Subtotal</b>	<b>8</b>	<b>8</b>	<b>16</b>
	<b>TOTAL</b>	<b>828</b>	<b>812</b>	<b>1,640</b>

(1) Concentration totals listed are for primary concentrations only.

(2) Includes both A.B. and S.B programs.

SOURCE: REGISTRAR OFFICES

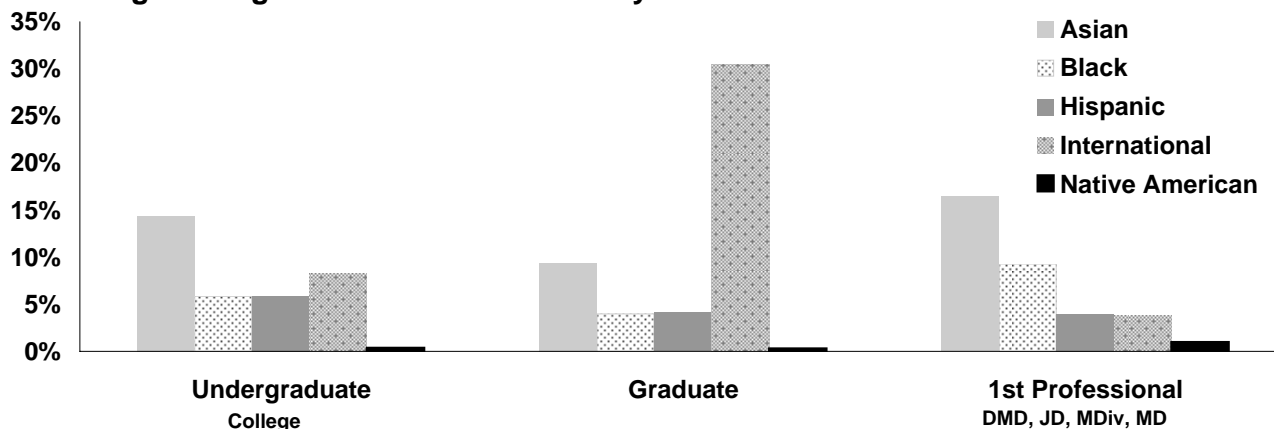


## Degrees Conferred by Student Ethnicity: Academic Year 2005-2006 <sup>(1)</sup>



	College	GSAs	Business	Dental	Design	Divinity	Education	Government	Law	Medical	Public Health	Extension	Total
<b>Asian/Pacific Islander</b>													
Male	102	40	55	2	8	4	14	13	36	26	27	16	343
Female	133	50	42	8	13	1	60	16	44	21	24	20	432
<b>Subtotal</b>	<b>235</b>	<b>90</b>	<b>97</b>	<b>10</b>	<b>21</b>	<b>5</b>	<b>74</b>	<b>29</b>	<b>80</b>	<b>47</b>	<b>51</b>	<b>36</b>	<b>775</b>
Percent	14%	10%	11%	22%	10%	3%	11%	6%	11%	27%	12%	8%	11.3%
<b>Black/Non-Hispanic</b>													
Male	42	7	23	2	2	1	12	12	21	4	6	15	147
Female	54	22	14	1	1	4	33	12	33	14	10	4	202
<b>Subtotal</b>	<b>96</b>	<b>29</b>	<b>37</b>	<b>3</b>	<b>3</b>	<b>5</b>	<b>45</b>	<b>24</b>	<b>54</b>	<b>18</b>	<b>16</b>	<b>19</b>	<b>349</b>
Percent	6%	3%	4%	7%	1%	3%	7%	5%	7%	10%	4%	4%	5.1%
<b>Hispanic</b>													
Male	50	28	12	2	5	5	10	11	11	7	3	14	158
Female	47	15	14	-	6	2	26	17	10	3	9	6	155
<b>Subtotal</b>	<b>97</b>	<b>43</b>	<b>26</b>	<b>2</b>	<b>11</b>	<b>7</b>	<b>36</b>	<b>28</b>	<b>21</b>	<b>10</b>	<b>12</b>	<b>20</b>	<b>313</b>
Percent	6%	5%	3%	4%	5%	4%	5%	5%	3%	6%	3%	4%	4.5%
<b>International Students</b>													
Male	68	166	201	3	48	11	18	141	90	5	87	49	887
Female	67	85	99	3	32	9	49	62	79	4	57	47	593
<b>Subtotal</b>	<b>135</b>	<b>251</b>	<b>300</b>	<b>6</b>	<b>80</b>	<b>20</b>	<b>67</b>	<b>203</b>	<b>169</b>	<b>9</b>	<b>144</b>	<b>96</b>	<b>1,480</b>
Percent	8%	27%	33%	13%	39%	13%	10%	39%	23%	5%	34%	21%	21.5%
<b>Native American</b>													
Male	3	-	2	-	2	-	2	1	3	2	-	1	16
Female	3	1	1	-	-	-	-	2	1	2	1	1	12
<b>Subtotal</b>	<b>6</b>	<b>1</b>	<b>3</b>	<b>-</b>	<b>2</b>	<b>-</b>	<b>2</b>	<b>3</b>	<b>4</b>	<b>4</b>	<b>1</b>	<b>2</b>	<b>28</b>
Percent	0%	0%	0%	0%	1%	0%	0%	1%	1%	2%	0%	0%	0.4%
<b>White/Non-Hispanic</b>													
Male	437	223	238	14	42	50	67	103	201	43	56	128	1,602
Female	370	144	114	6	29	61	220	68	123	37	85	147	1,404
<b>Subtotal</b>	<b>807</b>	<b>367</b>	<b>352</b>	<b>20</b>	<b>71</b>	<b>111</b>	<b>287</b>	<b>171</b>	<b>324</b>	<b>80</b>	<b>141</b>	<b>275</b>	<b>3,006</b>
Percent	49%	39%	39%	44%	34%	71%	43%	33%	43%	46%	33%	59%	43.7%
<b>Unknown/Other</b>													
Male	126	79	71	2	9	5	36	31	60	4	24	13	460
Female	138	75	20	2	10	4	114	29	36	2	38	4	472
<b>Subtotal</b>	<b>264</b>	<b>154</b>	<b>91</b>	<b>4</b>	<b>19</b>	<b>9</b>	<b>150</b>	<b>60</b>	<b>96</b>	<b>6</b>	<b>62</b>	<b>17</b>	<b>932</b>
Percent	16%	16%	10%	9%	9%	6%	23%	12%	13%	3%	15%	4%	13.5%
<b>TOTAL</b>	<b>1,640</b>	<b>935</b>	<b>906</b>	<b>45</b>	<b>207</b>	<b>157</b>	<b>661</b>	<b>518</b>	<b>748</b>	<b>174</b>	<b>427</b>	<b>465</b>	<b>6,883</b>

### Percentage of Degrees Conferred to Minority and International Students



(1) Not adjusted for joint degree students.  
SOURCE: REGISTRAR OFFICES

Degrees Conferred: Academic Year 2001-2006 <sup>(1)</sup>

	Academic Year	2001	2002	2003	2004	2005	2006
College	A.B.	1,694	1,656	1,686	1,658	1,672	1,629
	S.B.	8	9	5	13	17	11
	<b>Subtotal</b>	<b>1,702</b>	<b>1,665</b>	<b>1,691</b>	<b>1,671</b>	<b>1,689</b>	<b>1,640</b>
GSAS	A.M.	317	325	363	349	331	402
	M.E.	1	-	1	1	-	-
	M.F.S.	1	3	-	-	-	4
	S.M.	44	65	58	60	66	56
	Ph.D.	387	383	392	444	413	473
	<b>Subtotal</b>	<b>750</b>	<b>776</b>	<b>814</b>	<b>854</b>	<b>810</b>	<b>935</b>
Business	M.B.A.	848	916	887	894	884	903
	D.B.A.	5	4	3	4	6	3
	<b>Subtotal</b>	<b>853</b>	<b>920</b>	<b>890</b>	<b>898</b>	<b>890</b>	<b>906</b>
Dental	D.M.D.	32	32	36	33	34	32
	M.M.S.	15	14	15	12	12	9
	M.P.H.	2	-	-	-	-	-
	D.M.S.	8	10	3	3	11	4
	<b>Subtotal</b>	<b>57</b>	<b>56</b>	<b>54</b>	<b>48</b>	<b>57</b>	<b>45</b>
Design	M. Arch.	96	98	91	95	87	81
	M.A.U.D., M.L.A.U.D.	25	24	25	20	28	23
	M.Des.	45	51	51	67	55	45
	M.L.A.	34	24	27	29	47	25
	M.U.P.	18	14	15	17	32	21
	D.Des.	9	11	8	8	7	12
	<b>Subtotal</b>	<b>227</b>	<b>222</b>	<b>217</b>	<b>236</b>	<b>256</b>	<b>207</b>
Divinity	M.Div.	63	38	50	44	58	42
	M.T.S.	95	102	83	102	94	97
	Th.M.	7	4	7	5	4	9
	Th.D.	6	8	3	6	10	9
	<b>Subtotal</b>	<b>171</b>	<b>152</b>	<b>143</b>	<b>157</b>	<b>166</b>	<b>157</b>
Education	Ed.M.	603	603	589	617	643	580
	Ed.D.	47	78	59	60	53	70
	C.A.S.	6	3	4	4	3	11
	<b>Subtotal</b>	<b>656</b>	<b>684</b>	<b>652</b>	<b>681</b>	<b>699</b>	<b>661</b>
Government	M.P.A. (1 Year)	191	202	209	225	208	172
	M.P.A. (2 Year)	72	84	86	89	90	103
	M.P.A.I.D.	49	56	77	63	64	63
	M.P.P.	150	158	163	138	194	175
	M.U.P.	4	5	7	10	6	5
	D.P.A.	1	-	-	-	-	-
	<b>Subtotal</b>	<b>467</b>	<b>505</b>	<b>542</b>	<b>525</b>	<b>562</b>	<b>518</b>
Law	J.D.	543	554	575	551	547	582
	LL.M.	130	144	130	157	161	159
	S.J.D.	10	7	14	8	3	7
	<b>Subtotal</b>	<b>683</b>	<b>705</b>	<b>719</b>	<b>716</b>	<b>711</b>	<b>748</b>
Medicine	M.D.	162	157	165	177	147	152
	MMSc.	11	13	24	24	26	22
	<b>Subtotal</b>	<b>173</b>	<b>170</b>	<b>189</b>	<b>201</b>	<b>173</b>	<b>174</b>
Public Health	M.P.H.	205	214	211	209	213	214
	M.S., M.O.H.	147	134	152	137	162	164
	D.P.H., D.S.	39	42	65	39	54	49
	<b>Subtotal</b>	<b>391</b>	<b>390</b>	<b>428</b>	<b>385</b>	<b>429</b>	<b>427</b>
Extension	A.A.	10	16	20	13	20	15
	A.L.B.	126	134	113	120	118	108
	A.L.M.	88	84	82	91	112	140
	Grad. Cert.	341	312	245	233	184	202
	<b>Subtotal</b>	<b>565</b>	<b>546</b>	<b>460</b>	<b>457</b>	<b>434</b>	<b>465</b>
	<b>TOTAL</b>	<b>6,695</b>	<b>6,791</b>	<b>6,799</b>	<b>6,829</b>	<b>6,876</b>	<b>6,883</b>

(1) Not adjusted for joint degree students.

SOURCE: REGISTRAR OFFICES

International Enrollment: Fall 2006 <sup>(1)</sup> 

	Africa	Asia	Europe	Latin America	Middle East	North America	Oceania	Stateless	Total
<b>College</b>	48	153	191	24	32	128	12	-	<b>588</b>
<b>GSAS</b>	19	555	416	64	88	137	32	-	<b>1,311</b>
<b>Business</b>	28	179	173	73	33	97	19	-	<b>602</b>
<b>Dental</b>	-	13	5	-	8	13	-	-	<b>39</b>
<b>Design</b>	2	115	37	8	11	25	3	-	<b>201</b>
<b>Divinity</b>	6	21	4	-	1	4	-	-	<b>36</b>
<b>Education</b>	2	52	12	13	5	18	-	-	<b>102</b>
<b>Government</b>	20	146	102	48	28	49	13	1	<b>407</b>
<b>Law</b>	21	69	75	26	20	47	8	-	<b>266</b>
<b>Medical</b>	1	7	6	5	-	21	2	-	<b>42</b>
<b>Public Health</b>	14	93	23	12	11	23	-	1	<b>177</b>
<b>Extension</b>	2	18	8	15	-	7	-	-	<b>50</b>
<b>TOTAL</b>	<b>163</b>	<b>1,421</b>	<b>1,052</b>	<b>288</b>	<b>237</b>	<b>569</b>	<b>89</b>	<b>2</b>	<b>3,821</b>

(1) Counts include full-time degree and non-degree students only, which include transfer and special students, visiting undergraduates, and Extension School enrollees. Counts exclude executive education and professional development programs.

SOURCE: INTERNATIONAL OFFICE

# Historical Enrollment of International Students: Fall 2001 - 2006<sup>(1)</sup>



	Fall					
	2001	2002	2003	2004	2005	2006
<b>Africa</b>						
Ghana	16	15	19	17	17	25
Kenya	17	14	22	23	18	21
Nigeria	34	22	24	20	25	22
South Africa	26	30	23	23	22	22
Zimbabwe	12	18	18	13	16	13
Other	59	49	48	52	64	60
<b>Subtotal</b>	<b>164</b>	<b>148</b>	<b>154</b>	<b>148</b>	<b>162</b>	<b>163</b>
<b>Asia</b>						
China	318	337	354	361	378	403
India	120	112	133	167	189	193
Japan	163	134	127	137	135	130
South Korea	212	207	191	218	244	269
Taiwan	81	86	82	103	113	113
Other	286	285	279	281	298	313
<b>Subtotal</b>	<b>1,180</b>	<b>1,161</b>	<b>1,166</b>	<b>1,267</b>	<b>1,357</b>	<b>1,421</b>
<b>Europe</b>						
Bulgaria	43	41	42	48	51	54
France	67	83	78	68	76	82
Germany	119	124	132	137	159	149
Italy	49	51	54	46	53	53
Spain	67	55	53	51	44	52
United Kingdom	157	174	180	191	177	194
Other	444	451	473	477	462	468
<b>Subtotal</b>	<b>946</b>	<b>979</b>	<b>1,012</b>	<b>1,018</b>	<b>1,022</b>	<b>1,052</b>
<b>Latin America</b>						
Argentina	61	60	55	48	35	44
Brazil	65	68	63	63	64	61
Chile	24	26	26	33	32	33
Colombia	40	50	31	43	40	50
Peru	27	18	20	22	20	28
Other	92	86	65	60	58	72
<b>Subtotal</b>	<b>309</b>	<b>308</b>	<b>260</b>	<b>269</b>	<b>249</b>	<b>288</b>
<b>Middle East</b>						
Cyprus	7	6	11	15	18	16
Iran	4	3	5	9	8	13
Israel	71	75	71	76	71	81
Lebanon	16	8	12	15	13	16
Turkey	64	79	71	74	71	80
Other	34	28	34	32	34	31
<b>Subtotal</b>	<b>196</b>	<b>199</b>	<b>204</b>	<b>221</b>	<b>215</b>	<b>237</b>
<b>North America</b>						
Canada	464	492	444	467	481	471
Mexico	95	85	71	74	78	98
<b>Subtotal</b>	<b>559</b>	<b>577</b>	<b>515</b>	<b>541</b>	<b>559</b>	<b>569</b>
<b>Oceania</b>						
Australia	73	66	70	67	82	68
Fiji	-	-	-	-	1	-
New Zealand	21	19	21	15	20	21
<b>Subtotal</b>	<b>94</b>	<b>85</b>	<b>91</b>	<b>82</b>	<b>103</b>	<b>89</b>
<b>Stateless</b>	-	2	-	-	2	2
<b>TOTAL</b>	<b>3,448</b>	<b>3,459</b>	<b>3,402</b>	<b>3,546</b>	<b>3,669</b>	<b>3,821</b>

**Africa Other:** Algeria, Benin, Botswana, Cameroon, Egypt, Equatorial Guinea, Ethiopia, The Gambia, Malawi, Mauritius, Morocco, Rwanda, Senegal, Sierra Leone, Sudan, Swaziland, Tanzania, Togo, Uganda, Zambia.

**Asia Other:** Afghanistan, Bangladesh, Bhutan, Burma (Myanmar), Hong Kong, Indonesia, Kazakhstan, Kyrgyzstan, Malaysia, Nepal, Pakistan, Philippines, Singapore, Sri Lanka, Thailand, Uzbekistan, Vietnam.

**Europe Other:** Albania, Armenia, Austria, Azerbaijan, Belarus, Belgium, Bosnia and Herzegovina, Croatia, Czech Republic, Denmark, Estonia, Finland, Georgia, Greece, Hungary, Iceland, Ireland, Jersey, Latvia, Liechtenstein, Lithuania, Luxembourg, Macedonia, Moldova, Netherlands, Norway, Poland, Portugal, Romania, Russia, Slovakia, Slovenia, Sweden, Switzerland, Ukraine, Yugoslavia (Former).

**Latin America Other:** The Bahamas, Barbados, Bermuda, Bolivia, Costa Rica, Dominica, Dominican Republic, Ecuador, El Salvador, Guatemala, Guyana, Honduras, Jamaica, Panama, Saint Lucia, Trinidad and Tobago, Uruguay, Venezuela.

**Middle East Other:** Bahrain, Iraq, Jordan, Kuwait, Qatar, Saudi Arabia, Syria, United Arab Emirates, West Bank.

(1) Counts include full-time degree and non-degree students only, which includes transfer and special students, visiting undergraduates, and Extension School enrollees. Counts exclude executive education and professional development programs. Countries listed are for Fall 2006. Information on countries for enrollments in prior years can be obtained from the International Office.

SOURCE: INTERNATIONAL OFFICE

## Summer School Enrollment: Summer 2001 - 2006



### Harvard Students by School <sup>(1)</sup>

	2001	2002	2003	2004	2005	2006
<b>College</b>	330	322	348	334	435	497
<b>GSAS</b>	62	61	56	55	76	57
<b>Education</b>	12	5	8	10	10	3
<b>Extension</b>	291	298	307	365	354	339
<b>Other Harvard Schools</b>	22	17	10	21	11	16
<b>Subtotal</b>	<b>717</b>	<b>703</b>	<b>729</b>	<b>785</b>	<b>886</b>	<b>912</b>

### Other Students by Educational Level <sup>(2)</sup>

<b>Secondary School</b>	1,190	1,320	1,130	1,020	1,156	1,444
<b>Graduate</b>	1,642	1,522	1,748	1,593	1,656	1,831
<b>Undergraduate</b>	1,067	1,050	965	1,122	1,109	1,286
<b>Unknown</b>	279	299	72	89	71	67
<b>Subtotal</b>	<b>4,178</b>	<b>4,191</b>	<b>3,915</b>	<b>3,824</b>	<b>3,992</b>	<b>4,628</b>
<b>TOTAL</b>	<b>4,895</b>	<b>4,894</b>	<b>4,644</b>	<b>4,609</b>	<b>4,878</b>	<b>5,540</b>

### Non-Degree Headcount: Fall 2001 - 2006 <sup>(3)</sup>

	2001	2002	2003	2004	2005	2006		
						Male	Female	Total
<b>College</b>	-	-	-	-	36	-	-	-
<b>GSAS</b>	144	204	197	188	220	91	93	<b>184</b>
<b>Dental <sup>(4)</sup></b>	31	40	45	38	41	19	17	<b>36</b>
<b>Design</b>	12	3	3	2	6	1	1	<b>2</b>
<b>Divinity</b>	45	18	11	16	7	5	3	<b>8</b>
<b>Education</b>	84	103	84	95	89	34	70	<b>104</b>
<b>Government</b>	13	8	9	10	8	3	8	<b>11</b>
<b>Law</b>	38	47	54	40	68	34	15	<b>49</b>
<b>Medical</b>	-	-	-	-	1	-	-	-
<b>Public Health</b>	3	1	-	-	22	4	1	<b>5</b>
<b>Extension <sup>(5)</sup></b>	4,483	4,945	4,758	4,470	4,675	2,466	2,799	<b>5,265</b>
<b>TOTAL</b>	<b>4,853</b>	<b>5,369</b>	<b>5,161</b>	<b>4,859</b>	<b>5,173</b>	<b>2,657</b>	<b>3,007</b>	<b>5,664</b>

(1) Counts include matriculating Harvard students enrolled in Harvard courses during the summer session.

(2) Beginning with 2004, high school students are counted as undergraduates instead of Secondary School students.

(3) Non-degree enrollments include all students enrolled on October 15 in at least one class that is creditable toward a degree or formal award.  
2005 counts include 58 graduate students and 36 College students displaced by Hurricane Katrina.

(4) Includes post-doctorates in clinical specialty certification programs.

(5) Counts are for the first semester only. This significantly undercounts yearly enrollment in the Extension School as approximately the same number of new students might be enrolled in the second semester.



# University Faculty: Fall 2006 <sup>(1)</sup>



	Head Count			Full-time
	Male	Female	Total	Equivalent
<b>Arts and Sciences</b>				
<b>Professor</b>				
Tenured <sup>(2)</sup>	391	96	487	478.2
Non-Tenured <sup>(3)</sup>	14	7	21	16.4
Associate Professor	47	26	73	73.0
Assistant Professor	94	52	146	145.2
Lecturers & Instructors <sup>(4)</sup>	113	133	246	191.6
Other Faculty <sup>(5)</sup>	62	33	95	57.1
<b>TOTAL</b>	<b>721</b>	<b>347</b>	<b>1,068</b>	<b>961.5</b>

	Head Count			Full-time
	Male	Female	Total	Equivalent
<b>Design</b>				
<b>Professor</b>				
Tenured	23	5	28	22.5
Non-Tenured <sup>(3)</sup>	-	1	1	1.0
Associate Professor <sup>(6)</sup>	9	2	11	9.7
Assistant Professor	5	4	9	9.0
Lecturers & Instructors <sup>(4)</sup>	23	10	33	7.9
Other Faculty <sup>(5)</sup>	41	15	56	18.6
<b>TOTAL</b>	<b>101</b>	<b>37</b>	<b>138</b>	<b>68.6</b>

	Head Count			Full-time
	Male	Female	Total	Equivalent
<b>Education</b>				
<b>Professor</b>				
Tenured	16	9	25	24.3
Non-Tenured <sup>(3)</sup>	6	-	6	5.8
Associate Professor	1	4	5	5.0
Assistant Professor	3	4	7	7.0
Lecturers & Instructors <sup>(4)</sup>	9	21	30	20.0
Other Faculty <sup>(5)</sup>	-	1	1	0.5
<b>TOTAL</b>	<b>35</b>	<b>39</b>	<b>74</b>	<b>62.6</b>

	Head Count			Full-time
	Male	Female	Total	Equivalent
<b>Law</b>				
<b>Professor</b>				
Tenured <sup>(2)</sup>	63	12	75	73.5
Non-Tenured <sup>(3)</sup>	2	1	3	3.0
Associate Professor	n/a	n/a	n/a	n/a
Assistant Professor <sup>(6)</sup>	3	3	6	6.0
Lecturers & Instructors <sup>(4)</sup>	44	30	74	32.9
Other Faculty <sup>(5)</sup>	42	16	58	25.2
<b>TOTAL</b>	<b>154</b>	<b>62</b>	<b>216</b>	<b>140.6</b>

	Head Count			Full-time
	Male	Female	Total	Equivalent
<b>Medical Quad-Based</b>				
<b>Professor</b>				
Tenured	89	15	104	101.6
Non-Tenured <sup>(3)</sup>	3	2	5	5.0
Associate Professor	22	5	27	26.3
Assistant Professor	26	13	39	38.3
Lecturers & Instructors <sup>(4)</sup>	40	36	76	71.8
Other Faculty <sup>(5)</sup>	29	30	59	57.8
<b>TOTAL</b>	<b>209</b>	<b>101</b>	<b>310</b>	<b>300.8</b>

	Head Count			Full-time
	Male	Female	Total	Equivalent
<b>Other Academic Units <sup>(7)</sup></b>				
<b>Professor</b>				
Tenured	1	3	4	3.0
Non-Tenured <sup>(3)</sup>	-	-	-	-
Other Faculty <sup>(5)</sup>	8	3	11	7.2
<b>TOTAL</b>	<b>9</b>	<b>6</b>	<b>15</b>	<b>10.2</b>

	Head Count			Full-time
	Male	Female	Total	Equivalent
<b>Business</b>				
<b>Professor</b>				
Tenured <sup>(2)</sup>	73	14	87	84.0
Non-Tenured <sup>(3)</sup>	21	2	23	19.8
Associate Professor	24	8	32	32.0
Assistant Professor	37	20	57	55.5
Lecturers & Instructors <sup>(4)</sup>	10	1	11	9.2
Other Faculty <sup>(5)</sup>	7	3	10	9.5
<b>TOTAL</b>	<b>172</b>	<b>48</b>	<b>220</b>	<b>209.9</b>

	Head Count			Full-time
	Male	Female	Total	Equivalent
<b>Divinity</b>				
<b>Professor</b>				
Tenured	16	9	25	19.0
Non-Tenured <sup>(3)</sup>	1	3	4	3.5
Associate Professor	2	-	2	2.0
Assistant Professor	3	1	4	2.0
Lecturers & Instructors <sup>(4)</sup>	-	-	-	-
Other Faculty <sup>(5)</sup>	24	22	46	23.1
<b>TOTAL</b>	<b>46</b>	<b>35</b>	<b>81</b>	<b>49.6</b>

	Head Count			Full-time
	Male	Female	Total	Equivalent
<b>Government</b>				
<b>Professor</b>				
Tenured <sup>(2)</sup>	38	8	46	37.8
Non-Tenured <sup>(3)</sup>	7	1	8	7.2
Associate Professor	10	4	14	14.0
Assistant Professor	7	2	9	9.0
Lecturers & Instructors <sup>(4)</sup>	25	15	40	37.3
Other Faculty <sup>(5)</sup>	18	6	24	13.8
<b>TOTAL</b>	<b>105</b>	<b>36</b>	<b>141</b>	<b>119.0</b>

	Head Count			Full-time
	Male	Female	Total	Equivalent
<b>Public Health</b>				
<b>Professor</b>				
Tenured	59	15	74	61.2
Non-Tenured <sup>(3)</sup>	8	5	13	10.9
Associate Professor	23	15	38	32.2
Assistant Professor	29	19	48	37.5
Lecturers & Instructors <sup>(4)</sup>	24	11	35	23.8
Other Faculty <sup>(5)</sup>	14	14	28	19.3
<b>TOTAL</b>	<b>157</b>	<b>79</b>	<b>236</b>	<b>184.9</b>

	Head Count			Full-time
	Male	Female	Total	Equivalent
<b>Dental</b>				
<b>Professor</b>				
Tenured	5	1	6	6.0
Non-Tenured <sup>(3)</sup>	3	-	3	3.0
Associate Professor	4	2	6	6.0
Assistant Professor <sup>(8)</sup>	6	4	10	10.0
Lecturers & Instructors <sup>(4)</sup>	14	15	29	25.8
Other Faculty <sup>(5)</sup>	1	4	5	5.0
<b>TOTAL</b>	<b>33</b>	<b>26</b>	<b>59</b>	<b>55.8</b>

	Head Count			Full-time
	Male	Female	Total	Equivalent
<b>University Faculty</b>				
<b>Professor</b>				
Tenured <sup>(2)</sup>	774	187	961	911.1
Non-Tenured <sup>(3)</sup>	65	22	87	75.5
Associate Professor	142	66	208	200.1
Assistant Professor	213	122	335	319.5
Lecturers & Instructors <sup>(4)</sup>	302	272	574	420.2
Other Faculty <sup>(5)</sup>	246	147	393	237.0
<b>TOTAL (incl. duplicates)</b>	<b>1,742</b>	<b>816</b>	<b>2,558</b>	<b>2163.5</b>
Adj. for duplicate counts	32	6	38	
<b>TOTAL <sup>(1)</sup></b>	<b>1,710</b>	<b>810</b>	<b>2,520</b>	<b>2,163.5</b>

**NOTES:**

(1) Faculty members are counted once at each school in which they hold an appointment. Several faculty have appointments at more than one school, so an adjusted University total is provided to account for duplication. Counts include all faculty appointed as of October 31, 2006.

(2) University Professors are special endowed positions and are the University's highest professorial distinction. They are included in the Tenured totals of the Schools in which they were originally appointed: Arts and Sciences (16), Business (2); Government (1); and Law (2).

(3) Non-Tenured Professor counts include Non-Tenured Professors and/or Professors of Practice (except in the Design School where Professors of Practice are tenured). The following schools have Professors of Practice: Arts & Sciences (17), Business (14), Design (7), Divinity (4), Education (4), Government (7).

(4) Counts include Lecturers, Instructors and Preceptors. Divinity School Lecturers and Instructors are included with that School's counts for "Other Faculty."

(5) Other Faculty include Associates, Academic; Associates, Principal; Counselors, Denominational; Critics; Curators; Department Heads (Faculty); Directors (Faculty); Directors, Associate (Faculty); Fellows (Other Faculty); Members of Faculty; Physicians (Other Faculty); Professors, Adjunct; Research Associates (Other Faculty); Research Fellows; Student Supervisors/Advisors; Tutors, Academics (Other Faculty); Visiting Faculty.

(6) Design School Associate Professor total includes three Adjunct Associate Professors.

(7) Other Academic Units include the Radcliffe Institute for Advanced Study, University Health Services, and Memorial Church.

(8) Dental and Law School Assistant Professor totals each include one Assistant Clinical Professor.

## Faculty of Medicine Quad and Hospital-Based Personnel: Fall 2006 <sup>(1)</sup>



Medical Quad-based and Dental on-payroll counts are also included on the University Faculty counts exhibit.

	Head Count			Full-time
	Male	Female	Total	Equivalent
<b>Medical <sup>(2)</sup></b>				
<b>Quad-based</b>				
<b>Professor</b>				
Tenured	89	15	104	101.6
Non-Tenured	3	2	5	5.0
Associate Professor	22	5	27	26.3
Assistant Professor	26	13	39	38.3
Lecturers and Instructors	40	36	76	71.8
Other Faculty <sup>(3)</sup>	29	30	59	57.8
<b>TOTAL</b>	<b>209</b>	<b>101</b>	<b>310</b>	<b>300.8</b>

<b>Hospital-Based on Payroll</b>				
Professor <sup>(4)</sup>	137	12	149	144.3
Associate Professor <sup>(4)</sup>	32	10	42	39.5
Assistant Professor <sup>(4)</sup>	17	11	28	24.2
Other Faculty <sup>(3)</sup>	26	24	50	45.0
<b>TOTAL</b>	<b>212</b>	<b>57</b>	<b>269</b>	<b>253.0</b>

<b>Clinical Unpaid Appointments <sup>(5)</sup></b>				
Professor	499	73	572	
Associate Professor	914	267	1,181	
Assistant Professor	1,206	643	1,849	
Other Faculty <sup>(6)</sup>	3,545	3,070	6,615	
<b>TOTAL</b>	<b>6,164</b>	<b>4,053</b>	<b>10,217</b>	

	Head Count			Full-time
	Male	Female	Total	Equivalent
<b>Dental <sup>(2)</sup></b>				
<b>On-Payroll</b>				
<b>Professor</b>				
Tenured	5	1	6	6.0
Non-Tenured <sup>(7)</sup>	3	-	3	3.0
Associate Professor	4	2	6	6.0
Assistant Professor <sup>(7)</sup>	6	4	10	10.0
Lecturers and Instructors	14	15	29	25.8
Other Faculty <sup>(3)</sup>	1	4	5	5.0
<b>TOTAL</b>	<b>33</b>	<b>26</b>	<b>59</b>	<b>55.8</b>

<b>Clinical Unpaid Appointments <sup>(5)</sup></b>				
Professor	7	-	7	
Associate Professor	12	5	17	
Assistant Professor	21	5	26	
Other Faculty <sup>(6)</sup>	177	61	238	
<b>TOTAL</b>	<b>217</b>	<b>71</b>	<b>288</b>	

**NOTES:**

(1) Faculty members are counted once at each school in which they hold an appointment. Counts include all faculty appointed as of October 31, 2006.

(2) The Faculties of the Medical and Dental Schools are made up of both quad and hospital-based personnel. Quad-based faculty are located in Medical and Dental School facilities and are primarily research oriented. Hospital-based faculty are located in affiliated hospitals and work in both research and clinical settings. Medical School faculty supervise degree students, post-doctoral residents, fellows and interns. FTE's are not available for the Clinical Unpaid Appointments in the Faculty of Medicine.

(3) Other Faculty (on Payroll) include Associates, Academic; Associates, Principal; Research Associates; Visiting Faculty, and Hospital-based Lecturers and Instructors.

(4) Hospital-Based on Payroll counts for Professors, Associate Professors and Assistant Professors include small numbers of Clinical Professors (6), Associate Clinical Professors (2) and Assistant Clinical Professors (4), respectively.

(5) Clinical Unpaid Appointments at the Medical and Dental schools exclude faculty who also have paid appointments at these schools.

(6) Other Faculty (Unpaid) includes Administrative Officers (Faculty), Assistants, Clinical; Associates; Fellows; Instructors; Lecturers; Research Associates; Research Fellows; Teaching Associates, and Visiting Faculty.

(7) Dental (On Payroll) Non-Tenured Professor total includes two Clinical Professors and Assistant Professor total includes one Assistant Clinical Professor.

## Non-Faculty Staff in the Schools <sup>(1)</sup>

Counts are Full-Time Equivalent Figures as of October 31, 2006

University-Wide Totals	University Funding			Sponsored Funding			Non-Faculty Academic Staff <sup>(2)</sup>			Grand Total
	Administrative & Professional	Clerical & Technical	Service & Trades	Administrative & Professional	Clerical & Technical	Subtotal	University Funding	Sponsored Funding	Subtotal	
<b>Faculties</b>	3,480.0	2,978.8	69.4	559.9	517.6	<b>7,605.7</b>	423.0	783.0	<b>1,206.0</b>	<b>8,811.6</b>
<b>Allieds</b>	275.8	171.2	52.2	2.4	1.2	<b>502.9</b>	13.8	4.0	<b>17.8</b>	<b>520.7</b>
<b>Central Administration <sup>(3)</sup></b>	594.5	349.1	55.0	1.0	2.0	<b>1,001.6</b>	0.2	-	<b>0.2</b>	<b>1,001.8</b>
<b>Service Departments <sup>(3)</sup></b>	708.8	360.5	841.8	0.5	-	<b>1,911.7</b>	9.0	-	<b>9.0</b>	<b>1,920.7</b>
<b>Non-Departmental &amp; Special <sup>(4)</sup></b>	43.1	47.2	-	-	-	<b>90.3</b>	-	-	-	<b>90.3</b>
<b>TOTAL</b>	<b>5,102.3</b>	<b>3,906.8</b>	<b>1,018.4</b>	<b>563.8</b>	<b>520.8</b>	<b>11,112.1</b>	<b>446.0</b>	<b>787.0</b>	<b>1,233.0</b>	<b>12,345.1</b>

Faculties	University Funding			Sponsored Funding			Non-Faculty Academic Staff <sup>(2)</sup>			Grand Total
	Administrative & Professional	Clerical & Technical	Service & Trades	Administrative & Professional	Clerical & Technical	Subtotal	University Funding	Sponsored Funding	Subtotal	
<b>Faculty of Arts and Sciences <sup>(5)</sup></b>	677.0	660.8	0.2	120.8	92.4	<b>1,551.2</b>	234.5	211.1	<b>445.6</b>	<b>1,996.8</b>
Athletics	112.7	24.2	-	-	-	<b>136.9</b>	16.0	-	<b>16.0</b>	<b>152.9</b>
College Library	246.5	271.8	-	0.5	-	<b>518.8</b>	-	-	-	<b>518.8</b>
DEAS <sup>(6)</sup>	52.6	59.5	9.8	49.7	5.5	<b>177.1</b>	22.7	57.7	<b>80.4</b>	<b>257.5</b>
Division of Continuing Education	73.4	64.6	-	-	-	<b>137.9</b>	-	-	-	<b>137.9</b>
GSAS	24.5	22.7	-	-	-	<b>47.2</b>	-	-	-	<b>47.2</b>
College Life & Student Dorms	112.0	64.9	-	-	-	<b>176.8</b>	-	-	-	<b>176.8</b>
Museums <sup>(7)</sup>	75.7	80.6	-	0.6	3.5	<b>160.4</b>	3.3	13.7	<b>17.0</b>	<b>177.3</b>
Yenching	5.8	1.0	-	-	-	<b>6.8</b>	-	-	-	<b>6.8</b>
<b>Subtotal</b>	<b>1,380.1</b>	<b>1,250.1</b>	<b>10.0</b>	<b>171.6</b>	<b>101.4</b>	<b>2,913.2</b>	<b>276.5</b>	<b>282.4</b>	<b>558.9</b>	<b>3,472.1</b>
<b>Business</b>	483.8	273.0	-	-	-	<b>756.8</b>	-	-	-	<b>756.8</b>
Publishing Division	265.1	15.0	-	-	-	<b>280.1</b>	-	-	-	<b>280.1</b>
<b>Subtotal</b>	<b>748.9</b>	<b>288.0</b>	-	-	-	<b>1,036.9</b>	-	-	-	<b>1,036.9</b>
<b>Dental</b>	27.8	65.2	-	2.0	5.7	<b>100.7</b>	1.0	4.0	<b>5.0</b>	<b>105.7</b>
<b>Design</b>	49.2	51.0	-	-	-	<b>100.2</b>	-	0.8	<b>0.8</b>	<b>101.0</b>
<b>Divinity</b>	60.7	44.1	-	-	-	<b>104.8</b>	-	2.5	<b>2.5</b>	<b>107.3</b>
<b>Education</b>	132.8	110.6	-	23.0	10.9	<b>277.3</b>	4.3	3.0	<b>7.3</b>	<b>284.5</b>
<b>Government</b>	213.1	183.9	-	34.2	13.2	<b>444.4</b>	24.3	3.5	<b>27.7</b>	<b>472.2</b>
<b>Law</b>	230.2	223.7	-	4.4	3.6	<b>461.9</b>	14.8	3.6	<b>18.3</b>	<b>480.2</b>
<b>Medical</b>	421.6	535.7	59.4	84.2	194.9	<b>1,295.8</b>	78.8	369.2	<b>448.0</b>	<b>1,743.8</b>
<b>Public Health</b>	170.5	195.1	-	240.5	187.8	<b>793.9</b>	23.4	114.0	<b>137.5</b>	<b>931.4</b>
<b>Radcliffe Institute for Advanced Study</b>	45.2	31.4	-	-	-	<b>76.6</b>	-	-	-	<b>76.6</b>
<b>Subtotal Faculties</b>	<b>3,480.0</b>	<b>2,978.8</b>	<b>69.4</b>	<b>559.9</b>	<b>517.6</b>	<b>7,605.7</b>	<b>423.0</b>	<b>783.0</b>	<b>1,206.0</b>	<b>8,811.6</b>

(1) Figures do not include temporary employees (except limited regular guards and custodians), LHT's (less-than-half-time), students or teaching fellows. Counts include only filled positions.

(2) Counts include Academic Clinical Fellows, Academic Department/Program Fellows, Coaching Assistants, Internal Post Docs, Teaching Assistants and Visiting Fellows.

(3) Core departments provide central functions of the University (accounts payable, HR benefits, etc.) and are supported through funds from the President, Faculties, and departments. Service departments derive their revenue on a fee-for-service basis from internal customers.

(4) Non-Departmental and Special include Signet Society, Credit Union, Harvard Student Agencies, and LASPAU.

(5) The Faculty of Arts and Sciences includes FTEs for Dumbarton Oaks. In addition Dumbarton Oaks has additional personnel on local data systems who are not reflected in the counts above.

(6) DEAS refers to Division of Engineering and Applied Sciences (name as of October 31, 2006).

(7) Museums include Museum of Comparative Zoology, Peabody Museum and Semitic Museum.

### Non-Faculty Staff in the Allied Institutions, Central Administration and Service Departments <sup>(1)</sup>

Counts are Full-Time Equivalent Figures as of October 31, 2006



	University Funding			Sponsored Funding			Non-Faculty Academic Staff <sup>(2)</sup>			Grand Total
	Administrative & Professional	Clerical & Technical	Service & Trades	Administrative & Professional	Clerical & Technical	Subtotal	University Funding	Sponsored Funding	Subtotal	
	<b>Allied Institutions</b>									
American Repertory Theatre	44.0	22.2	-	-	-	66.2	0.8	-	0.8	67.0
Arnold Arboretum	32.1	23.7	16.0	0.5	-	72.3	3.0	4.0	7.0	79.3
Art Museums	85.1	66.0	36.2	1.1	-	188.4	-	-	-	188.4
Harvard Magazine	16.9	1.2	-	-	-	18.1	-	-	-	18.1
Inter-Faculty Initiatives	8.0	6.3	-	-	-	14.3	4.0	-	4.0	18.3
Institute of Politics	6.0	11.0	-	-	-	17.0	6.0	-	6.0	23.0
Joint Center for Housing Studies	7.1	5.7	-	0.8	1.0	14.6	-	-	-	14.6
Memorial Church	7.0	7.8	-	-	-	14.8	-	-	-	14.8
Nieman Foundation	9.9	6.5	-	-	0.2	16.6	-	-	-	16.6
University Press	56.2	20.8	-	-	-	77.0	-	-	-	77.0
Villa I Tatti <sup>(3)</sup>	3.6	-	-	-	-	3.6	-	-	-	3.6
<b>Subtotal</b>	<b>275.8</b>	<b>171.2</b>	<b>52.2</b>	<b>2.4</b>	<b>1.2</b>	<b>502.9</b>	<b>13.8</b>	<b>4.0</b>	<b>17.8</b>	<b>520.7</b>

### Central Administration - Core and Service Departments <sup>(4)</sup>

Core departments in bold, service departments in italics

<b>President &amp; Provost, University Marshal and Office of the Governing Boards</b>	65.1	39.4	-	-	-	104.5	0.2	-	0.2	104.7
<i>University Information Services</i>	227.6	81.9	1.0	-	-	310.6	-	-	-	310.6
<i>University Health Services</i>	140.1	118.9	-	0.5	-	259.5	9.0	-	9.0	268.5
<b>VP Administration</b>	18.8	7.6	-	-	-	26.4	-	-	-	26.4
<i>Dining Services</i>	71.5	19.9	348.4	-	-	439.8	-	-	-	439.8
<i>Faculty Club</i>	13.0	4.0	41.3	-	-	58.2	-	-	-	58.2
<i>Harvard Real Estate Services</i>	73.1	56.3	-	-	-	129.4	-	-	-	129.4
<i>University Operations Services</i>	120.5	45.8	451.1	-	-	617.4	-	-	-	617.4
<b>Allston Development Group</b>	15.9	4.6	-	-	-	20.5	-	-	-	20.5
<b>VP Development &amp; Alumni Affairs</b>	91.5	65.1	-	-	-	156.6	-	-	-	156.6
<i>Fund Raising Campaigns</i>	63.1	33.8	-	-	-	96.8	-	-	-	96.8
<b>VP Finance</b>	162.1	108.4	-	-	-	270.5	-	-	-	270.5
<b>VP General Counsel</b>	54.7	28.6	55.0	-	-	138.3	-	-	-	138.3
<b>VP Government, Community and Public Affairs</b>	26.1	18.8	-	-	-	44.9	-	-	-	44.9
<b>VP Human Resources</b>	91.9	41.4	-	-	-	133.3	-	-	-	133.3
<b>University Library</b>	68.4	35.2	-	1.0	2.0	106.6	-	-	-	106.6
<b>Subtotal</b>	<b>1,303.4</b>	<b>709.6</b>	<b>896.8</b>	<b>1.5</b>	<b>2.0</b>	<b>2,913.3</b>	<b>9.2</b>	<b>-</b>	<b>9.2</b>	<b>2,922.5</b>
<b>Non-Departmental &amp; Special <sup>(5)</sup></b>	<b>43.1</b>	<b>47.2</b>	<b>-</b>	<b>-</b>	<b>-</b>	<b>90.3</b>	<b>-</b>	<b>-</b>	<b>-</b>	<b>90.3</b>

(1) Figures do not include temporary employees (except limited regular guards and custodians), LHT's (less-than-half-time), students or teaching fellows. Counts include only filled positions.

(2) Counts include Academic Clinical Fellows, Academic Department/Program Fellows, Coaching Assistants, Internal Post Docs, Teaching Assistants and Visiting Fellows.

(3) Additional personnel on local data systems are not included in this count.

(4) Core departments provide central functions of the University (accounts payable, HR benefits etc.) and are supported through funds from the President, Faculties, and departments. Service departments derive their revenue on a fee-for-service basis from internal customers.

(5) Non-Departmental and Special include Signet Society, Credit Union, Harvard Student Agencies, and LASPAU.

## Tuition Charges: FY1987 - FY2007 <sup>(1)</sup>



Fiscal Year	College	GSAS	Business	Design	Divinity	Education	Government <sup>(2)</sup>	Law	Medical/Dental <sup>(3)</sup>	Public Health
1987	\$11,040	\$11,040	\$11,900	\$10,850	\$7,100	\$10,176	\$10,440	\$10,700	\$14,000	\$9,600
1988	11,645	11,645	13,300	11,500	7,600	10,752	11,075	11,400	14,850	10,575
1989	12,310	12,310	14,250	12,250	8,100	11,440	11,800	12,307	15,750	11,470
1990	13,085	13,085	15,350	13,110	8,630	12,232	12,570	13,400	16,850	12,515
1991	13,960	13,960	16,400	14,300	9,200	13,152	13,390	14,475	18,030	13,570
1992	14,860	14,860	17,500	15,450	9,940	14,192	14,662	15,560	19,110	14,790
1993	15,870	15,870	18,550	16,650	10,540	15,044	15,690	16,730	20,257	15,675
1994	16,856	16,856	19,750	17,483	11,070	15,796	16,631	17,750	21,260	16,775
1995	17,851	17,851	21,000	18,360	11,630	16,664	17,710	19,080	22,300	17,770
1996	18,838	18,838	22,700	19,276	12,220	17,581	18,650	20,500	23,192	18,840
1997	19,770	19,770	23,840	20,240	12,830	18,460	19,770	21,700	24,150	19,800
1998	20,600	20,600	25,000	21,252	13,480	19,476	20,720	22,800	25,200	20,890
1999	21,342	21,342	26,260	22,208	14,160	20,430	21,656	23,900	26,000	21,895
2000	22,054	22,054	27,250	23,163	14,870	21,410	22,520	25,000	27,000	22,950
2001	22,694	22,694	28,500	24,159	15,620	22,600	23,400	26,000	28,000	23,980
2002	23,457	23,370	30,050	25,195	16,400	23,720	24,320	27,500	29,000	25,050
2003	24,630	24,630	31,800	26,330	17,220	25,144	26,488	29,500	30,500	26,300
2004	26,066	26,066	33,650	27,910	18,080	26,628	28,580	31,250	32,000	27,670
2005	27,448	27,448	35,600	29,500	18,984	28,092	30,272	33,120	34,250	29,300
2006	28,752	28,752	37,500	30,916	19,920	29,360	31,752	35,100	35,800	30,620
2007	\$30,275	\$30,275	\$39,600	\$32,152	\$20,712	\$30,544	\$33,276	\$37,100	\$37,200	\$31,800

### Average Annual Growth Rates

	College	GSAS	Business	Design	Divinity	Education	Government	Law	Medical/Dental	Public Health
20 YEAR	5.2%	5.2%	6.2%	5.6%	5.5%	5.6%	6.0%	6.4%	5.0%	6.2%
10 YEAR	4.4%	4.4%	5.2%	4.7%	4.9%	5.2%	5.3%	5.5%	4.4%	4.9%
5 YEAR	5.2%	5.3%	5.7%	5.0%	4.8%	5.2%	6.5%	6.2%	5.1%	4.9%
1 YEAR	5.3%	5.3%	5.6%	4.0%	4.0%	4.0%	4.8%	5.7%	3.9%	3.9%

(1) All amounts exclude the University Health Service fee.

(2) For FY03 and FY04, the School of Government implemented two tuition rate increases: one for first-year students (shown above) and one for returning students (FY03 is \$25,440 and FY04 is \$27,704).

(3) Dental School tuition is \$35,790 for FY06 and \$26,050 for FY99.

SOURCE: ANNUAL TUITION PROPOSALS APPROVED BY THE CORPORATION.



# Comparative Undergraduate Tuition and Fees <sup>(1)</sup>

Ranked in descending order for FY2007



Institution	Actual		Change FY2006 - 2007		Notes	
	FY2006	FY2007	Percent	Nominal	FY2006	FY2007
<b>Columbia Total</b>	<b>\$42,584</b>	<b>\$44,812</b>	<b>5.2%</b>	<b>\$2,228</b>		
Tuition	32,582	34,376	5.5%	1,794		
Mandatory Fees	664	788	18.7%	124	Student Life Fee: \$664	Student Life Fee: \$788
Room & Board	9,338	9,648	3.3%	310		
<b>Chicago Total</b>	<b>\$42,369</b>	<b>\$44,613</b>	<b>5.3%</b>	<b>\$2,244</b>		
Tuition	32,088	33,819	5.4%	1,731		
Mandatory Fees	177	186	5.1%	9	Activity Fee: \$177	Activity Fee: \$186
Room & Board	10,104	10,608	5.0%	504		
<b>UPenn Total</b>	<b>\$41,988</b>	<b>\$44,212</b>	<b>5.3%</b>	<b>\$2,224</b>		
Tuition	29,252	30,850	5.5%	1,598	General Fee: \$2,572	General Fee: \$2,766
Mandatory Fees	3,334	3,558	6.7%	224	Tech Fee: \$538	Tech Fee: \$560
Room & Board	9,402	9,804	4.3%	402	Rec Fee: \$224	Rec Fee: \$232
<b>Cornell Total</b>	<b>\$41,717</b>	<b>\$43,757</b>	<b>4.9%</b>	<b>\$2,040</b>		
Tuition	31,300	32,800	4.8%	1,500		
Mandatory Fees	167	181	8.4%	14	Activity Fee: \$167	Activity Fee: \$181
Room & Board	10,250	10,776	5.1%	526		
<b>Brown Total</b>	<b>\$41,770</b>	<b>\$43,754</b>	<b>4.7%</b>	<b>\$1,984</b>		
Tuition	32,838	34,474	5.0%	1,636		
Mandatory Fees	136	146	7.4%	10	Activity Fee: \$136	Activity Fee: \$146
Room & Board	8,796	9,134	3.8%	338		
<b>Harvard Total</b>	<b>\$41,675</b>	<b>\$43,655</b>	<b>4.8%</b>	<b>\$1,980</b>		
Tuition	30,122	31,665	5.1%	1,543	Student Services	Student Services
Mandatory Fees	1,975	2,044	3.5%	69	Fee: \$1,975	Fee: \$2,044
Room & Board	9,578	9,946	3.8%	368		
<b>Stanford Total</b>	<b>\$41,384</b>	<b>\$43,631</b>	<b>5.4%</b>	<b>\$2,247</b>		
Tuition	31,200	32,994	5.8%	1,794	Associated Students	Associated Students
Mandatory Fees	252	270	7.1%	18	of Stanford Univ. \$252	of Stanford Univ. \$270
Room & Board	9,932	10,367	4.4%	435		
<b>MIT Total</b>	<b>\$41,800</b>	<b>\$43,550</b>	<b>4.2%</b>	<b>\$1,750</b>		
Tuition	32,100	33,400	4.0%	1,300		
Mandatory Fees	200	200	0.0%	0	Activity Fee: \$200	Activity Fee: \$200
Room & Board	9,500	9,950	4.7%	450		
<b>Dartmouth Total</b>	<b>\$41,355</b>	<b>\$43,341</b>	<b>4.8%</b>	<b>\$1,986</b>		
Tuition	31,770	33,297	4.8%	1,527		
Mandatory Fees	195	204	4.6%	9	Activity Fee: \$195	Activity Fee: \$204
Room & Board	9,390	9,840	4.8%	450		
<b>Yale Total</b>	<b>\$41,000</b>	<b>\$43,050</b>	<b>5.0%</b>	<b>\$2,050</b>		
Tuition	31,460	33,030	5.0%	1,570		
Room & Board	9,540	10,020	5.0%	480		
<b>Princeton Total <sup>(2)</sup></b>	<b>\$40,858</b>	<b>\$42,870</b>	<b>4.9%</b>	<b>\$2,012</b>	Res. College Fee: \$545	Res. College Fee: \$570
Tuition	31,450	33,000	4.9%	1,550	Class Dues: \$40	Class Dues: \$40
Mandatory Fees	645	670	3.9%	25	Activity Fee: \$60	Activity Fee: \$60
Room & Board	8,763	9,200	5.0%	437	(Fresh, Soph & some Jr.)	(Fresh, Soph & some Jr.)

(1) For comparative purposes, the health services fee is included in the tuition amount shown for all schools, with the following exception:

Cornell's health fee (\$1,354 in FY06 and \$1,500 in FY07), is optional and excluded.

(2) Princeton does not include its mandatory fee as part of its announced package. The mandatory fee has been included in the FY06 and FY07 totals for consistency and comparison.

## Undergraduate Tuition Over Time: FY1987 - FY2007

Fiscal Year	Undergraduate Package						Economic Indicators <sup>(1)</sup>					
	Health Services			Student Services			U.S. CPI -U	Boston CPI -U	GDP IP Deflator (2000=100)	HEPI (1983=100)	Disposable Personal Income	Median Family Income Ages 45-54
	Tuition	Fee	Room	Board	Fee	Total						
1987	\$11,040	\$350	\$1,885	\$2,035	\$835	\$16,145	111.2	113.9	71.3	120.9	\$13,649	\$38,861
1988	11,645	370	2,065	2,145	875	17,100	115.8	120.2	73.2	126.2	14,241	41,413
1989	12,310	405	2,400	2,145	950	18,210	121.2	127.8	75.7	132.8	15,297	42,192
1990	13,085	460	2,560	2,275	1,015	19,395	127.0	134.3	78.6	140.8	16,257	46,101
1991	13,960	490	2,700	2,425	1,080	20,655	133.9	142.3	81.6	148.1	17,131	47,164
1992	14,860	550	2,900	2,620	1,150	22,080	138.2	146.6	84.4	153.4	17,609	49,606
1993	15,870	584	3,075	2,765	1,220	23,514	142.5	151.1	86.4	157.9	18,494	50,079
1994	16,856	614	3,225	2,910	1,275	24,880	146.2	153.5	88.4	163.3	18,872	52,034
1995	17,851	634	3,370	3,040	1,335	26,230	150.4	156.7	90.3	168.3	19,555	54,379
1996	18,838	634	3,510	3,200	1,393	27,575	154.5	160.6	92.1	173.3	20,287	55,029
1997	19,770	654	3,659	3,336	1,477	28,896	158.9	165.7	93.9	178.6	21,091	57,161
1998	20,600	666	3,808	3,470	1,536	30,080	161.7	169.6	95.4	184.9	21,940	59,959
1999	21,342	686	3,940	3,574	1,590	31,132	164.5	173.2	96.5	189.1	23,161	61,833
2000	22,054	711	4,072	3,685	1,642	32,164	169.3	179.3	97.9	196.9	23,968	65,303
2001	22,694	745	4,190	3,792	1,689	33,110	175.1	187.6	100.0	206.5	25,479	68,082
2002	23,457	816	4,331	3,919	1,746	34,269	178.2	193.3	102.4	215.0	26,236	68,114
2003	24,630	1,020	4,461	4,041	1,798	35,950	182.1	200.0	104.1	221.2	27,157	69,180
2004	26,066	1,142	4,706	4,162	1,852	37,928	186.1	207.0	106.3	231.5	28,031	70,149
2005	27,448	1,264	4,974	4,286	1,908	39,880	191.7	211.8	109.4	239.8	29,531	71,002
2006	28,752	1,370	5,148	4,430	1,975	41,675	199.0	220.1	112.7	251.8	30,440	72,881
2007	\$30,275	\$1,390	\$5,328	\$4,618	\$2,044	\$43,655	204.1	225.0	116.0	260.3	\$31,773	\$74,995

## Average Annual Growth Rates

	Undergraduate Package						Economic Indicators <sup>(1)</sup>					
	Health Services			Student Services			U.S. CPI -U	Boston CPI -U	GDP IP Deflator (1996=100)	HEPI (1983=100)	Disposable Personal Income	Median Family Income Ages 45-54
	Tuition	Fee	Room	Board	Fee	Total						
20 YEAR	5.2%	7.1%	5.3%	4.2%	4.6%	5.1%	3.1%	3.5%	2.5%	3.9%	4.3%	3.3%
10 YEAR	4.4%	7.8%	3.8%	3.3%	3.3%	4.2%	2.5%	3.1%	2.1%	3.8%	4.2%	2.8%
5 YEAR	5.2%	11.2%	4.2%	3.3%	3.2%	5.0%	2.8%	3.1%	2.5%	3.9%	3.9%	1.9%
1 YEAR	5.3%	1.5%	3.5%	4.2%	3.5%	4.8%	2.6%	2.2%	2.9%	3.4%	4.4%	2.9%

(1) Economic indicators are averages of all index figures for a given year. CPI-U and HEPI are based on the fiscal year. All other indices are based on the most recent calendar year.  
MFI for 2007 is projected at 2.9% over the prior year based on the MFI compounded annual growth rate for the previous ten years.

# Degree Student Financial Assistance: FY2006 <sup>(1)</sup>



Expressed in thousands of dollars

## GRANTS

	Other			Total	% of Total Aid for School
	Institutional	Federal	Outside		
College	\$82,548	\$6,228	\$10,996	\$99,772	79.3%
GSAS	74,968	18,363	9,301	102,632	74.0%
Business	15,589	42	2,261	17,892	24.9%
Dental	867	177	61	1,104	13.8%
Design	4,647	-	349	4,996	36.1%
Divinity	6,401	-	236	6,638	61.1%
Education	8,274	207	1,659	10,140	43.3%
Government	10,841	98	8,584	19,523	53.1%
Law	12,501	262	1,556	14,319	21.0%
Medical	7,766	585	6,109	14,461	50.1%
Public Health	6,039	3,195	2,762	11,996	61.6%
Extension	457	154	91	702	20.3%
<b>TOTAL</b>	<b>\$230,898</b>	<b>\$29,311</b>	<b>\$43,967</b>	<b>\$304,176</b>	<b>55.4%</b>

### Grants

Institutional grants are from University unrestricted and restricted monies.

Federal grants include all Federal programs in each school including programs such as the Pell grant, SEOG or graduate training grants.

Outside grants include state and private support of students. In some schools, these numbers may include corporate sponsorship or other sponsored billing.

## LOANS

	Other			Total	% of Total Aid for School
	Institutional	Federal	Outside		
College <sup>(2)</sup>	\$3,077	\$12,963	\$4,700	\$20,740	16.5%
GSAS	30	1,284	485	1,798	1.3%
Business	1,680	18,185	34,078	53,943	75.1%
Dental	80	5,691	1,125	6,896	86.0%
Design	-	6,065	2,354	8,419	60.8%
Divinity	-	3,517	66	3,583	33.0%
Education	75	9,523	3,066	12,664	54.1%
Government	-	8,004	8,381	16,385	44.6%
Law	3,836	30,138	18,660	52,634	77.0%
Medical	3,145	10,864	362	14,372	49.8%
Public Health	-	5,657	1,771	7,428	38.1%
Extension	-	2,189	569	2,758	79.7%
<b>TOTAL</b>	<b>\$11,923</b>	<b>\$114,081</b>	<b>\$75,617</b>	<b>\$201,621</b>	<b>36.7%</b>

### Loans

Institutional loans are made to students from University capital without Federal guarantee.

Federal loan programs may involve capital from Harvard, or other private or Federal sources, loaned under Federal sponsorship such as Perkins, Direct Loans and FFEL programs.

Outside loans include private capital loaned to students or parents. It excludes personal loans.

## EMPLOYMENT

	Other		Total	% of Total Aid for School	TOTAL Grant, Loans & Employment
	Work-Study (CWSP)	Term			
College	\$920	\$4,432	\$5,352	4.3%	\$125,864
GSAS	455	33,872	34,326	24.7%	138,757
Business	-	-	-	0.0%	71,835
Dental	17	-	17	0.2%	8,016
Design	325	102	427	3.1%	13,843
Divinity	650	-	650	6.0%	10,871
Education	598	-	598	2.6%	23,403
Government	205	640	845	2.3%	36,753
Law	723	661	1,384	2.0%	68,337
Medical	41	-	41	0.1%	28,873
Public Health	58	-	58	0.3%	19,483
Extension	-	-	-	0.0%	3,460
<b>TOTAL</b>	<b>\$3,991</b>	<b>\$39,706</b>	<b>\$43,698</b>	<b>8.0%</b>	<b>\$549,495</b>

### Employment

Work-Study is a Federally-sponsored partnership with colleges and universities to provide students with the opportunity to work while in school.

Other term earnings reflect on-campus earnings by students who are not part of the work-study program. Jobs include casual employment (to the extent known), teaching fellowships, research assistantships and resident tutors.

(1) Amounts do not include the Business School, Law School, Medical School or the School of Government funding for graduates in the Low Income Protection Plan/Loan Repayment Assistance Programs.

(2) College total for loans includes \$13,535,102 in PLUS Loans and other Parental Loans.

NOTE: As of FY2006, degree student financial assistance for the ART is excluded from the exhibit.

Therefore, ART financial assistance amounts must be removed when comparing totals to prior years.

SOURCE: INTERNAL SURVEY

# Federal Sponsored Research: FY2005 - FY2006

Expressed in thousands of dollars



	FY2005			FY2006			Change in Total Exp. 2005/2006	FY2006 Indirect as % of Total
	Direct Costs	Indirect Costs	Total Costs	Direct Costs	Indirect Costs	Total Costs		
<b>ACADEMIC DEPARTMENTS</b>								
<b>FAS</b>								
<b>Arts &amp; Sciences</b>	\$62,426	\$26,305	<b>\$88,731</b>	\$69,214	\$29,268	<b>\$98,482</b>	11.0%	29.7%
<b>Division of Engineering and Applied Sciences</b>	22,451	9,513	<b>31,964</b>	22,281	9,847	<b>\$32,128</b>	0.5%	30.6%
<b>College Library</b>	91	9	<b>100</b>	200	36	<b>\$236</b>	136.5%	15.3%
<b>Museum of Comparative Zoology/Peabody Museum</b>	3,005	1,063	<b>4,068</b>	2,449	921	<b>\$3,370</b>	(17.2%)	27.3%
<b>College Life, Athletics, GSAS</b>	-	-	-	-	-	-	-	-
<b>FAS Subtotal</b>	<b>\$87,973</b>	<b>\$36,890</b>	<b>\$124,863</b>	<b>\$94,144</b>	<b>\$40,072</b>	<b>\$134,216</b>	<b>7.5%</b>	<b>29.9%</b>
<b>School of Business Administration</b>	-	-	-	-	-	-	-	-
<b>School of Dental Medicine</b>	4,334	1,350	<b>5,685</b>	4,891	1,703	<b>6,595</b>	16.0%	25.8%
<b>School of Design</b>	64	21	<b>85</b>	61	14	<b>75</b>	(11.9%)	18.1%
<b>Divinity School</b>	-	-	-	27	0	<b>27</b>	N/A	0.0%
<b>Graduate School of Education</b>	5,515	1,059	<b>6,574</b>	4,781	988	<b>5,770</b>	(12.2%)	17.1%
<b>JFK School of Government</b>	8,490	1,957	<b>10,446</b>	9,598	2,159	<b>11,757</b>	12.5%	18.4%
<b>Law School</b>	344	51	<b>394</b>	198	35	<b>234</b>	(40.8%)	15.1%
<b>Medical School</b>	142,517	60,654	<b>203,171</b>	138,603	58,374	<b>196,977</b>	(3.0%)	29.6%
<b>School of Public Health</b>	113,821	41,109	<b>154,929</b>	120,629	35,962	<b>156,591</b>	1.1%	23.0%
<b>Radcliffe Institute for Advanced Study</b>	277	174	<b>451</b>	-	-	-	(100.0%)	-
<b>Other Faculties Subtotal</b>	<b>\$275,361</b>	<b>\$106,375</b>	<b>\$381,736</b>	<b>\$278,788</b>	<b>\$99,235</b>	<b>\$378,026</b>	<b>(1.0%)</b>	<b>26.3%</b>
<b>Other Academic Departments<sup>(1)</sup></b>	<b>\$372</b>	<b>\$111</b>	<b>\$484</b>	<b>\$400</b>	<b>\$128</b>	<b>\$528</b>	<b>9.2%</b>	<b>24.2%</b>
<b>Service and Other Departments<sup>(2)</sup></b>	<b>\$703</b>	<b>\$80</b>	<b>\$782</b>	<b>\$833</b>	<b>\$90</b>	<b>\$923</b>	<b>18.0%</b>	<b>9.8%</b>
<b>GRAND TOTAL<sup>(3)</sup></b>	<b>\$364,409</b>	<b>\$143,456</b>	<b>\$507,865</b>	<b>\$374,166</b>	<b>\$139,526</b>	<b>\$513,692</b>	<b>1.1%</b>	<b>27.2%</b>

(1) Includes Arnold Arboretum, Harvard University Art Museums, and Joint Center for Housing Studies.

(2) Includes Central Administration, University Library and University Health Services.

(3) Totals include both Federal and Federal Once-Removed (Federal Once-Removed total cost for FY2005 is \$57,574 and for FY2006 is \$60,414). Totals exclude financial aid and agency funds.

SOURCE: OFFICE FOR SPONSORED PROGRAMS - ANNUAL REPORT

# Federal Research by Agency: FY2005 - FY2006



Expressed in thousands of dollars

	FY2005	FY2006	% Change	FY2006 Total as % of Federal Total
<b>Department of Health &amp; Human Services</b>				
National Institutes of Health	\$354,996	\$362,878	2.2%	70.6%
Other DHHS	46,193	41,560	(10.0%)	8.1%
<b>Subtotal</b>	<b>\$401,189</b>	<b>\$404,438</b>	<b>0.8%</b>	<b>78.7%</b>
<b>Department of Defense</b>				
Defense Advanced Research Projects Agency <sup>(1)</sup>	2,885	6,210	115.3%	1.2%
Department of the Army	6,843	5,907	(13.7%)	1.1%
Department of the Navy	9,657	5,905	(38.9%)	1.1%
Department of the Air Force <sup>(2)</sup>	2,525	5,037	99.5%	1.0%
<b>Subtotal</b>	<b>\$21,910</b>	<b>\$23,059</b>	<b>5.2%</b>	<b>4.5%</b>
<b>National Science Foundation</b>	38,157	38,162	0.0%	7.4%
<b>Department of Energy</b>	12,901	11,747	(8.9%)	2.3%
<b>Nat'l. Aeronautics &amp; Space Administration</b>	8,367	9,324	11.4%	1.8%
<b>Agency for International Development</b>	5,578	7,598	36.2%	1.5%
<b>Department of Education</b>	6,890	6,242	(9.4%)	1.2%
<b>Environmental Protection Agency</b>	5,972	5,983	0.2%	1.2%
<b>Department of State</b>	1,610	1,796	11.6%	0.3%
<b>Department of Commerce</b>	1,674	1,164	(30.5%)	0.2%
<b>Nat'l. Endowment for the Humanities</b>	420	727	73.1%	0.1%
<b>Department of Veterans Affairs</b>	121	561	363.6%	0.1%
<b>Department of Transportation</b>	248	423	70.6%	0.1%
<b>Federal Emergency Management Agency</b>	283	414	46.3%	0.1%
<b>Department of Interior</b>	370	395	6.8%	0.1%
<b>Department of Justice</b>	375	334	(10.9%)	0.1%
<b>Department of Housing and Urban Development</b>	72	207	187.5%	0.0%
<b>Department of Agriculture</b>	541	166	(69.3%)	0.0%
<b>Department of the Treasury</b>	0	70	-	0.0%
<b>National Endowment for the Arts</b>	29	60	106.9%	0.0%
<b>Department of Homeland Security</b>	42	49	16.7%	0.0%
<b>General Services Administration</b>	45	28	(37.8%)	0.0%
<b>Other Federal Agencies</b>	1,071	745	(30.4%)	0.1%
<b>GRAND TOTAL</b> <sup>(3)</sup>	<b>\$507,865</b>	<b>\$513,692</b>	<b>1.1%</b>	<b>100.0%</b>

(1) Includes Other - Department of Defense.

(2) Includes Air Force Office of Scientific Research

(3) Totals include both Federal and Federal Once-Removed (Federal Once-Removed total cost for FY2005 is \$57,574 and for FY2006 is \$60,414). Totals exclude financial aid and agency funds.

SOURCE: OFFICE FOR SPONSORED PROGRAMS - ANNUAL REPORT

# Non-Federal Sponsored Research: FY2005 - FY2006



Expressed in thousands of dollars

ACADEMIC DEPARTMENTS	FY2005			FY2006			Change in Total Exp. 2005/2006	FY2006 Indirect as % of Total
	Direct Costs	Indirect Costs	Total Costs	Direct Costs	Indirect Costs	Total Costs		
<b>FAS</b>								
Arts & Sciences	\$15,879	\$1,178	<b>\$17,057</b>	\$16,676	\$1,431	<b>\$18,107</b>	6.2%	7.9%
Division of Engineering and Applied Sciences	1,312	539	<b>1,850</b>	2,644	277	<b>2,922</b>	57.9%	9.5%
College Library	-	-	-	-	-	-	-	-
Museum of Comparative Zoology/Peabody Museum	215	15	<b>230</b>	312	11	<b>323</b>	40.7%	3.4%
College Life, Athletics, GSAS	15	-	<b>15</b>	-	-	-	-	-
<b>FAS Subtotal</b>	<b>\$17,420</b>	<b>\$1,732</b>	<b>\$19,151</b>	<b>\$19,632</b>	<b>\$1,719</b>	<b>\$21,352</b>	<b>11.5%</b>	<b>8.1%</b>
School of Business Administration	140	-	<b>140</b>	-	-	-	(100.0%)	0.0%
School of Dental Medicine	435	52	<b>486</b>	286	65	<b>351</b>	(27.8%)	18.5%
School of Design	329	58	<b>387</b>	341	57	<b>398</b>	2.9%	14.3%
Divinity School	154	16	<b>170</b>	483	45	<b>527</b>	209.6%	8.5%
Graduate School of Education	6,618	463	<b>7,081</b>	5,966	559	<b>6,525</b>	(7.8%)	8.6%
JFK School of Government	12,890	1,625	<b>14,515</b>	12,536	1,817	<b>14,354</b>	(1.1%)	12.7%
Law School	3,679	242	<b>3,921</b>	3,589	175	<b>3,764</b>	(4.0%)	4.6%
Medical School	29,975	4,231	<b>34,206</b>	25,727	3,454	<b>29,181</b>	(14.7%)	11.8%
School of Public Health	29,073	3,624	<b>32,697</b>	27,637	3,283	<b>30,920</b>	(5.4%)	10.6%
Radcliffe Institute for Advanced Study	150	4	<b>153</b>	486	3	<b>489</b>	219.0%	0.6%
<b>Other Faculties Subtotal</b>	<b>\$83,442</b>	<b>\$10,313</b>	<b>\$93,756</b>	<b>\$77,051</b>	<b>\$9,458</b>	<b>\$86,509</b>	<b>(7.7%)</b>	<b>10.9%</b>
<b>Other Academic Departments<sup>(1)</sup></b>	<b>\$1,402</b>	<b>\$98</b>	<b>\$1,501</b>	<b>\$1,233</b>	<b>\$85</b>	<b>\$1,318</b>	<b>(12.2%)</b>	<b>6.4%</b>
<b>Service and Other Departments<sup>(2)</sup></b>	<b>\$1,059</b>	<b>\$7</b>	<b>\$1,067</b>	<b>\$1,086</b>	<b>\$1</b>	<b>\$1,087</b>	<b>1.9%</b>	<b>0.1%</b>
<b>GRAND TOTAL<sup>(3)</sup></b>	<b>\$103,325</b>	<b>\$12,151</b>	<b>\$115,475</b>	<b>\$99,001</b>	<b>\$11,264</b>	<b>\$110,266</b>	<b>(4.5%)</b>	<b>10.2%</b>

(1) Includes Arnold Arboretum, Harvard University Art Museums, Joint Center for Housing Studies, Nieman Foundation, and Villa I Tatti.

(2) Includes Central Administration, Memorial Church, President's Initiatives, University Library, University Health Services, and University Operations Services.

(3) Total excludes financial aid expenditures and agency funds.

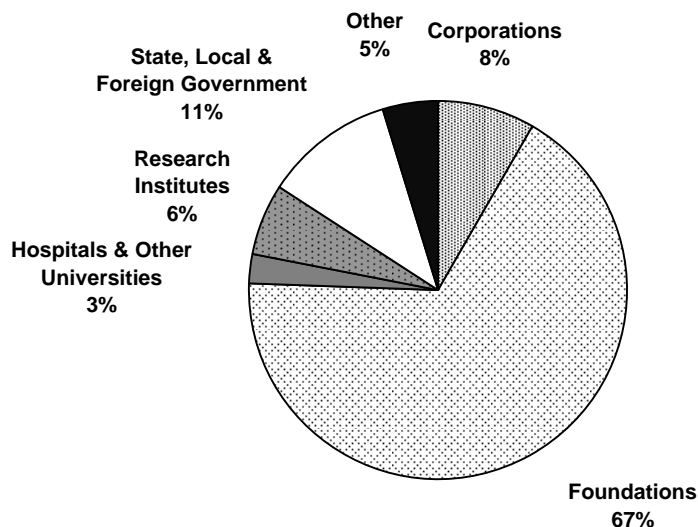
SOURCE: OFFICE FOR SPONSORED PROGRAMS - ANNUAL REPORT

## Expenditures under Non-Federal Sponsored Research by Sponsor Source: FY2006



Expressed in thousands of dollars

	Corporations	Foundations	Hospitals & Other Universities	Research Institutes	State, Local, & Foreign Government	Other Sources	Total
<b>FAS</b>							
Faculty of Arts & Sciences	\$1,119	\$14,300	\$124	\$1,433	\$560	\$571	\$18,107
Division of Engineering and Applied Sciences	684	1,911	146	16	-	165	2,922
College Library	-	-	-	-	-	-	-
Museum of Comparative Zoology/Peabody Museum	-	184	85	48	-	5	323
College Life, Athletics, GSAS	-	-	-	-	-	-	-
<b>FAS Subtotal</b>	<b>\$1,803</b>	<b>\$16,395</b>	<b>\$355</b>	<b>\$1,497</b>	<b>\$560</b>	<b>\$741</b>	<b>\$21,352</b>
School of Business Administration	-	-	-	-	-	-	-
School of Dental Medicine	236	55	27	-	33	-	351
School of Design	36	184	-	-	112	66	398
Divinity School	-	527	-	-	-	-	527
Graduate School of Education	15	5,668	-	2	278	562	6,525
JFK School of Government	1,205	7,804	84	1,218	2,714	1,330	14,354
Law School	-	3,501	143	81	40	-	3,764
Medical School	5,209	17,939	800	2,941	1,121	1,172	29,181
School of Public Health	644	19,776	1,460	1,034	7,282	724	30,920
Radcliffe Institute for Advanced Study	-	489	-	-	-	-	489
<b>Other Faculties Subtotal</b>	<b>7,345</b>	<b>\$55,943</b>	<b>\$2,514</b>	<b>\$5,276</b>	<b>\$11,580</b>	<b>\$3,854</b>	<b>\$86,509</b>
Other Academic Departments <sup>(1)</sup>	-	\$1,312	-	-	\$6	-	\$1,318
Service and Other Departments <sup>(2)</sup>	-	\$479	-	-	\$8	\$600	\$1,087
<b>GRAND TOTAL <sup>(3)</sup></b>	<b>\$9,148</b>	<b>\$74,129</b>	<b>\$2,869</b>	<b>\$6,773</b>	<b>\$12,154</b>	<b>\$5,195</b>	<b>\$110,266</b>



(1) Includes Arnold Arboretum, Harvard University Art Museums, Joint Center for Housing Studies, Nieman Foundation, and Villa I Tatti.

(2) Includes Central Administration, Memorial Church, President's Initiatives, University Health Services, University Library and University Operations Services.

(3) Total excludes financial aid expenditures and agency funds.

SOURCE: OFFICE FOR SPONSORED PROGRAMS - ANNUAL REPORT



## Historical Funding of Research by Sponsor

Expressed in thousands of dollars

### Federal (Prime and Once-Removed)

	Fiscal Year				
	2002	2003	2004	2005	2006
National Institutes of Health	\$283,112	\$297,035	\$343,248	\$354,996	\$362,878
Other DHHS	18,549	22,714	24,621	46,193	41,560
National Science Foundation	32,665	30,437	37,525	38,157	38,162
Department of Defense	16,569	19,060	18,222	21,911	23,059
Department of Energy	8,751	10,701	12,897	12,901	11,747
Nat'l. Aeronautics & Space Administration	9,803	9,402	10,429	8,367	9,324
Agency for International Development	4,286	4,153	3,684	5,578	7,598
Department of Education	6,634	6,096	5,393	6,890	6,242
Environmental Protection Agency	4,025	4,077	4,513	5,972	5,983
Department of Commerce	802	979	1,371	1,674	1,164
Department of State	1,581	1,705	1,797	1,610	1,796
Other <sup>(1)</sup>	7,358	6,305	4,613	3,617	4,178
<b>Federal Total</b>	<b>\$394,135</b>	<b>\$412,664</b>	<b>\$468,312</b>	<b>\$507,865</b>	<b>\$513,692</b>

### Non-Federal

	2002	2003	2004	2005	2006
Foundations	\$89,503	\$89,251	\$86,359	\$78,119	\$74,129
State, Local & Foreign Government	9,840	10,629	10,439	12,797	12,154
Corporations	13,875	9,916	10,084	11,058	9,147
Research Institutes	3,751	5,347	5,415	4,677	6,773
Other Sources	8,828	8,886	7,429	6,763	5,195
Hospitals & Other Universities	2,172	2,254	2,555	2,061	2,868
<b>Non-Federal Total</b>	<b>\$127,971</b>	<b>\$126,283</b>	<b>\$122,281</b>	<b>\$115,475</b>	<b>\$110,266</b>
<b>GRAND TOTAL <sup>(2)</sup></b>	<b>\$522,105</b>	<b>\$538,947</b>	<b>\$590,593</b>	<b>\$623,340</b>	<b>\$623,958</b>

### Growth in Sponsored Projects

Expressed in millions of dollars

Fiscal Year	Expenditure Actual \$	% Change	Expressed as	
			FY06 \$	% Change in FY06 \$
2002	\$522.1	7.2%	\$583.1	5.3%
2003	538.9	3.2%	588.9	1.0%
2004	590.6	9.6%	631.6	7.2%
2005	623.3	5.5%	647.1	2.5%
2006	\$624.0	0.1%	\$624.0	(3.6%)

(1) Agencies listed on this exhibit are based on FY2006 expenditures. Information on agencies in prior years can be obtained from the Office for Sponsored Programs.

(2) Total excludes financial aid expenditures and agency funds.

SOURCE: OFFICE FOR SPONSORED PROGRAMS - ANNUAL REPORT

## The Harvard University Library System

The Harvard University Library, founded in 1638, is the largest academic library in the world. Harvard's extensive collections serve as invaluable resources for students, faculty, and researchers. Holdings include over 15.8 million volumes, approximately 7.5 million photographs, and millions of manuscript pages, as well as recordings, maps, ephemera, and an exploding number of digital resources, all under the management of the 1,200 full-time-equivalent staff members in more than 80 individual libraries. Most libraries require a Harvard ID for admittance.

To locate books or other library materials, to find information on specific Harvard libraries, or to access the library catalogs, visit the Harvard Libraries web site at <http://lib.harvard.edu>.

### Digital Collections at Harvard

Harvard University provides open, online access to a rich array of digital materials, including photographic collections, documents, musical scores, prints, drawings, historical maps, books, legal transcripts, diaries, manuscripts, and more. You can also find a growing number of subject-specific collections available online at <http://digitalcollections.harvard.edu>

### Locating Digital Materials at Harvard

Visitors can use thousands of digital materials from the Harvard collections. While access to many licensed e-resources, such as journals, requires a Harvard ID and PIN, many other digital materials are open to all Internet users. Here are some places to start

- **E-Research @ Harvard Libraries** is the University's online system for searching and finding e-resources of many kinds. <http://e-research.lib.harvard.edu>
- Use the **HOLLIS catalog** to locate not only digital collections, but some individual digital objects as well. Look for "Internet Links" in HOLLIS records or choose "Digital Resources" when you begin your HOLLIS search. <http://holliscatalog.harvard.edu>
- **VIA**, Harvard's Visual Information Access catalog, provides links to more than 270,000 individual images. <http://via.harvard.edu>

## The Harvard University Library System

The many libraries at Harvard University comprise the largest academic library in the world, which is known broadly as the Harvard University Library. The Harvard University Library (HUL) is also a specific unit of Harvard's Central Administration. <http://hul.harvard.edu>

HUL's mission is to collaborate with and coordinate the many independent parts of the Harvard library system to provide users with the best possible collections in all media, to make them as accessible as possible, and to preserve them for the future. HUL programs include:

- The **Harvard Depository** (HD), a high-density, offsite storage facility shared by the Harvard libraries. Research libraries and consortia worldwide have emulated its innovative design. <http://hul.harvard.edu/hd>
- The **Harvard-Google Project**, through which the University Library and Google are collaborating to bring a large number of Harvard's out-of-copyright library books to Internet users everywhere. <http://hul.harvard.edu/hgproject>
- The **Harvard University Archives** preserves and provides access to Harvard's historical records; gathers an accurate, authentic, and complete record of the life of the University; and promotes the highest standards of management for Harvard's current records. The collections are used by scholars of American social, intellectual, and academic history; by historians of Harvard, including University departments studying their own history; by students learning the methods of historical research; and by the general public. <http://hul.harvard.edu/huarc>
- HUL's **Office for Information Systems** (OIS) develops, implements, and maintains innovative and stable systems and services that support the academic and research mission of the University by providing integrated and coherent access to research materials and resources. <http://hul.harvard.edu/ois>
- Harvard's **Open Collections Program** (OCP) advances teaching and learning on historical topics by providing online access to selected, subject-specific historical resources. <http://ocp.hul.harvard.edu>
- The **Weissman Preservation Center** specializes in the conservation of the rarest of books, manuscripts, art on paper, photographs, and other flat objects, which are among the University's special collections. <http://preserve.harvard.edu>

## Summary of University Library Growth and Expenditures FY2006

	Collections Increase			Expenditures (in \$000's) <sup>(2)</sup>					
			Volumes & Pamphlets	Salaries & Wages	Cost of Retirement and Health Programs	Books and Other Library Materials	Binding	Other Library Costs	Total
	Gross	<sup>(1)</sup> Net							
<b>University Library (HUL) <sup>(3)</sup></b>	2,121	2,121	119,596	\$6,724	\$2,290	\$11	-	\$8,151	\$17,175
<b>Faculty of Arts &amp; Sciences</b>									
Central Collections	218,444	204,835	9,802,557	29,689	10,406	14,752	555	21,129	76,530
House Libraries	60	60	210,392	65	-	8	-	2	75
Departmental & Divisional Libraries	4,204	3,510	353,694	820	250	2,238	21	103	3,432
<b>Special &amp; Research Libraries</b>	15,373	4,748	1,127,782	3,120	1,003	1,645	49	1,412	7,229
<b>Graduate/Profess. School Libraries</b>	52,456	25,062	4,212,549	17,629	6,078	9,486	392	8,763	42,348
Less Duplication	-	-	-					(6,984)	(6,984)
<b>University Library Totals</b>	<b>292,658</b>	<b>240,336</b>	<b>15,826,570</b>	<b>\$58,047</b>	<b>\$20,026</b>	<b>\$28,139</b>	<b>\$1,017</b>	<b>\$32,576</b>	<b>\$139,806</b>

(1) Net increase refers to the increase in volumes after accounting for replacement of previously owned volumes. Revised count of FY05 is 15,586,234.

(2) Due to rounding, expenditures may be slightly different than reported in the Library Annual Report.

(3) Expenditures for Harvard Depository reflect operations but exclude the interest and amortization for the Depository of \$1,925,949.

# Library Collections: FY2006



	Increase FY2006		Volumes & Pamphlets FY2006 <sup>(1)</sup>
	Gross	Net	
<b>University Library</b>			
University Archives	2,032	2,032	118,900
Weissman Preservation Center	89	89	696
<b>Library of the Faculty of Arts and Sciences (Harvard College Library)</b>			
<b>Central Collections</b>			
Cabot	3,113	2,052	274,545
Fine Arts	7,344	7,270	337,328
Fung Library	3,047	3,002	59,387
Harvard–Yenching	26,331	26,331	1,153,295
Houghton	5,926	5,926	487,325
Lamont	3,468	2,449	183,469
Littauer	5,375	(3,595)	433,416
Loeb Music	5,219	5,219	260,952
Quad Library	508	482	25,628
Social Sciences Program	5,354	5,239	56,048
Tozzer (Peabody Museum)	4,863	2,718	250,937
Widener	147,896	147,742	6,280,227
<b>House Libraries <sup>(2)</sup></b>	60	60	210,392
<b>Department and Divisional Libraries <sup>(3)</sup></b>	4,204	3,510	353,694
<b>Special Libraries</b>			
Astrophysics: Wolbach Library	1,087	(1,847)	75,243
Biblioteca Berenson	3,156	3,156	147,049
Botany Libraries	2,530	2,447	291,322
Career Reference	193	30	5,134
Comparative Zoology, Ernst Mayr Library of	2,130	2,130	297,528
Development Office Library	-	-	-
Dumbarton Oaks Research Library	5,090	4,660	207,188
European Studies, Center for, Library	113	113	13,598
Extension, Grossman Library for University	97	82	5,331
Forestry: Harvard Forest Library (Petersham, NH)	-	(7,000)	13,000
Hellenic Studies, Center for, Library	728	728	56,755
Islam: Hamilton A. R. Gibb Islamic Seminar Library	109	109	7,656
Journalism: Nieman Foundation	59	59	3,356
Oral Literature, Milman Parry Collection of	-	-	-
Property Planning, Harvard University, Information Research Center Library	8	8	1,213
Ukrainian Research Institute: Reference	73	73	3,409
<b>Graduate and Professional School Libraries</b>			
Harvard Business School: Baker Library	4,457	4,034	641,576
Harvard Design School: Frances Loeb Library	3,635	3,208	291,120
Harvard Divinity School: Andover–Harvard Theological Library	5,276	4,861	485,046
Harvard Graduate School of Education: Monroe C. Gutman Library	2,927	2,555	206,541
Harvard Law School Library	23,943	20,432	1,744,077
John F. Kennedy School of Government Library	2,646	(735)	58,578
Belfer Center for Science and International Affairs	-	-	4,374
Radcliffe Institute for Advanced Study: Schlesinger Library on History of American Women	3,842	3,836	85,037
Schools of Medicine, Public Health, and Dental Medicine: Francis A. Countway Library of Medicine	5,546	(13,044)	681,657
New England Primate Research Center	184	(85)	14,543
<b>TOTAL UNIVERSITY COLLECTION</b>	<b>292,658</b>	<b>240,336</b>	<b>15,826,570</b>

(1) Volumes and pamphlets for individual libraries include volumes transferred to the Depository. Totals reflect corrections in count.

(2) Includes Adams, Cabot, Currier, Dudley, Dunster, Eliot, Kirkland, Leverett, Lowell, Mather, Pforzheimer, Quincy, Winthrop.

(3) Includes African American Studies: Franklin and Wendy Raines Library, Biochemical Sciences Tutorial Library, Biological Laboratories Library, Fred N. Robinson Celtic Seminar Library, Chemistry and Chemical Biology Library, Herbert Weir Smyth Classical Library, Engineering and Applied Sciences: Gordon McKay, English: Child Memorial Library, History Departmental Library, History of Science Library, Linguistics Library, Mathematics: George David Birkhoff Library, Medieval Studies Library, Near Eastern Languages and Civilizations Library, Paleogeography, Philosophy: Robbins Library, Physics Research Library, Psychology Research Library, Sanskrit Library, Social Relations/Sociology Library, Statistics Library.

## Physical Plant: FY2006

The University owns and operates more than six hundred buildings of varying sizes and characteristics, spread over a wide geographic area. They encompass approximately 23.5 million gross square feet of space. The physical plant provides living space for students and faculty, research facilities to advance our base of knowledge, classroom and library spaces for the dissemination of knowledge, and space for administrative and support services.

Location <sup>(1)</sup>	Gross Square Footage of		Principal Activity on Site
	Acres	Buildings (in 000's)	
Cambridge, MA	225	13,698	Main Campus
Boston, MA	21	3,104	Medical & Dental Schools; School of Public Health
Boston (Allston)	354	4,700	Business School; University Publisher; Athletics, Other.
Boston (Jamaica Plain)	233	41	Arnold Arboretum
Watertown MA	29	1,160	Arsenal Buildings
Weston, MA	69	11	Case Estates (Arnold Arboretum)
Somerville, MA	2	16	Affiliated Housing
Medford, MA	1		
Bedford, MA	79	11	Concord Field Station
Carlisle, MA	69		Concord Field Station
Concord, MA	605		Field Station (Museum of Comparative Zoology)
Marlborough, MA	43		Animal Research Center (NERPC)
Southborough, MA	87	293	Harvard Depository
Petersham, MA	2704	71	Harvard Forest (Forestry, Botany)
Hamilton, MA	99		Harvard Forest
Phillipston, MA	205		Harvard Forest
Royalston, MA	57		Harvard Forest
Harvard, MA	37	19	Agassiz Cottage (Observatory)
Shrewsbury, MA	6	16	Artemas Ward Homestead (Museum)
Kittery Point & Sutton Island, ME	n/a	12	Howells Memorial & Kendall Houses
Ledyard, CT	n/a	21	Red Top Crew Quarters
Washington, DC	16	198	Dumbarton Oaks & Center for Hellenic Studies
Florence, Italy	n/a	94	Villa I Tatti (Center for Italian Renaissance Studies)
<b>TOTAL</b>	<b>4,941</b>	<b>23,467</b>	

(1) In addition to locations listed above, Harvard has numerous smaller holdings.

SOURCES: HARVARD REAL ESTATE SERVICES

# Physical Plant: FY2006



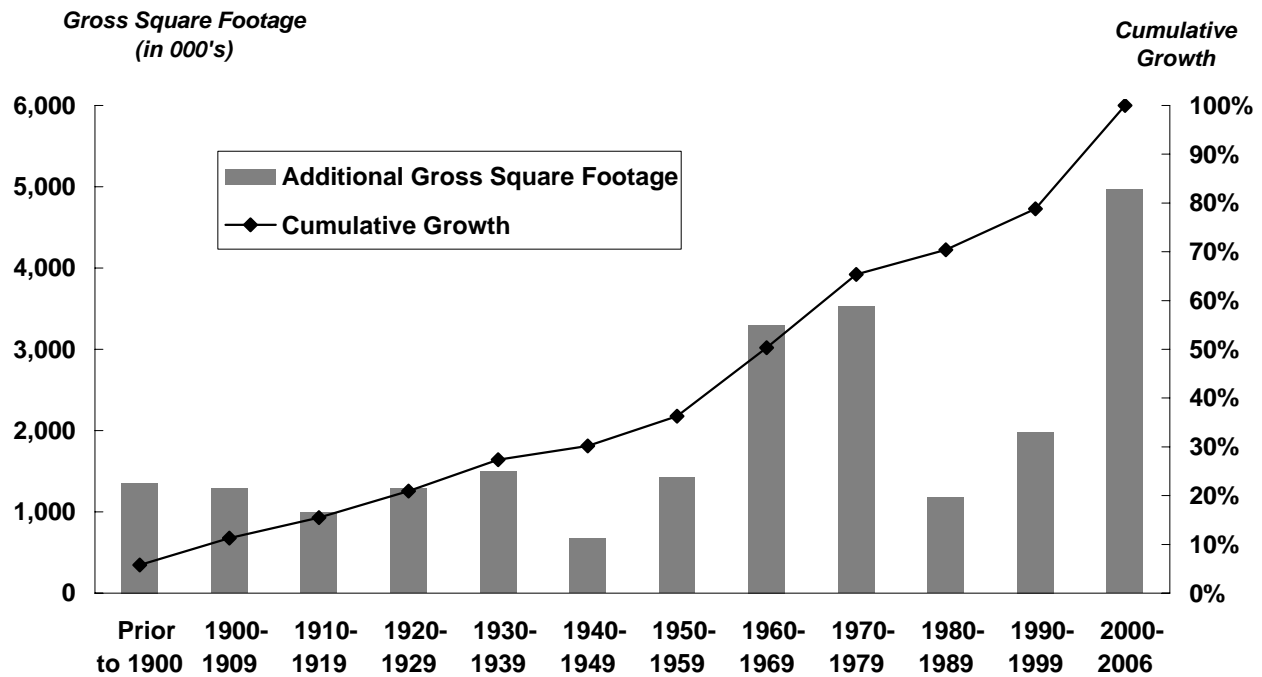
## Building Ownership

	Number of Buildings	Gross Square Footage	
		of Buildings (in 000's)	As a % of Total
FAS	264	8,877	37.8%
Radcliffe	16	282	1.2%
Business	33	1,470	6.3%
Dental	2	99	0.4%
Design	2	179	0.8%
Divinity	7	180	0.8%
Education	6	215	0.9%
Government	4	264	1.1%
Law	19	920	3.9%
Medical	29	2,466	10.5%
Public Health	8	573	2.4%
Real Estate	172	6,301	26.9%
Central Administration	54	1,640	7.0%
<b>TOTAL</b>	<b>616</b>	<b>23,467</b>	<b>100.0%</b>

## Primary Uses

	Gross Square Footage	
	of Buildings (in 000's)	As a % of Total
Residential/Dormitory	6,699	28.5%
Office/Classroom	4,934	21.0%
Lab/Studio	4,573	19.5%
Library	1,620	6.9%
Assembly/Museum	1,116	4.8%
Support	2,161	9.2%
Commercial	1,390	5.9%
Athletic	895	3.8%
Health Care	79	0.3%
<b>TOTAL</b>	<b>23,467</b>	<b>100.0%</b>

## Additions to the Physical Plant



SOURCE: HARVARD REAL ESTATE SERVICES

## Summary of Environmental Performance at Harvard

### Greenhouse Gas Emissions from Building Energy Use: FY2006

Total and Longwood area percent change is from FY1992; 1990 not available.  
 Updated November 8, 2007 to reflect revised electric conversion factors provided by EPA and DOE.

Location	Total Emissions (MTCDE*)	MTCDE/ 1000 sqft	% Change FY90-06
<b>FAS</b>	118,025	13.3	22%
<b>Business</b>	27,403	18.6	70%
<b>Design</b>	2,465	13.8	4%
<b>Divinity</b>	1,784	9.9	-15%
<b>Education</b>	2,775	12.9	16%
<b>Government</b>	909	3.4	-62%
<b>Law</b>	11,464	12.5	26%
<b>Other</b>	69,036	11	n/a
<hr/>			
<b>Longwood</b>	Total Emissions (MTCDE*)	MTCDE/ 1000 sqft	% Change FY92-06
Medical	66,174	26.8	229%
Dental	2,840	35.3	229%
Public Health	14,385	25.1	108%
<hr/>			
<b>TOTAL</b>	<b>317,260</b>	<b>14.8</b>	<b>65%</b>

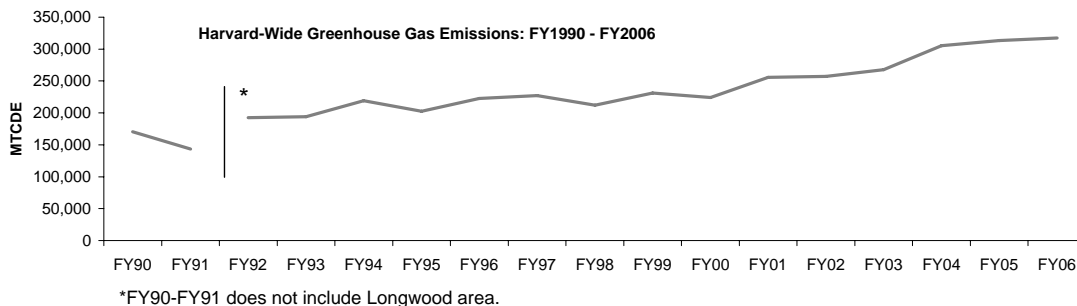
The Harvard University Greenhouse Gas Inventory is coordinated by the Harvard Green Campus Initiative using the World Resources Institute Greenhouse Gas Inventory Protocol. For more information visit <http://www.greencampus.harvard.edu/ggi/>

Exact fuel ratio and plant efficiency data was not available from the Medical Area Total Energy Plant (MATEP), which supplies most energy for the Longwood Campus. Greenhouse gas emissions for the Longwood Campus are based on best estimates available.

Energy and Water Use data for Cambridge and Allston is compiled from UOS Utility Reports.

Energy and water use data for Longwood Campus is reported by HMS and HSPH.

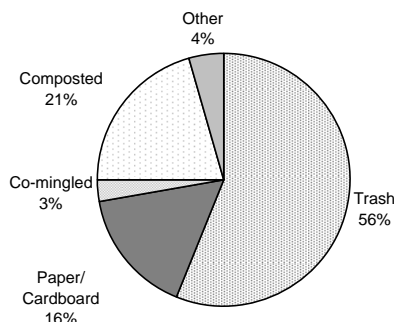
\*MTCDE: Metric Tons of Carbon Dioxide Equivalent



### Waste and Recycling: FY2006

	Recycling Rate	% Change	
		Trash (lbs. in 000's)	Trash FY90-06
<b>FAS</b>	33%	9,539	36%
<b>Business</b>	41%	1,587	53%
<b>Design</b>	54%	146	-47%
<b>Divinity</b>	35%	167	-15%
<b>Education</b>	48%	144	-52%
<b>Government</b>	36%	520	36%
<b>Law</b>	37%	1,027	1%
<b>Medical</b>	48%	2,170	n/a
<b>Dental</b>	n/a	n/a	n/a
<b>Public Health</b>	37%	659	n/a
<b>Other</b>	n/a	4,207	n/a
<b>TOTAL</b>	<b>44%</b>	<b>20,165</b>	<b>-8%</b>

### Harvard University Refuse: FY2006

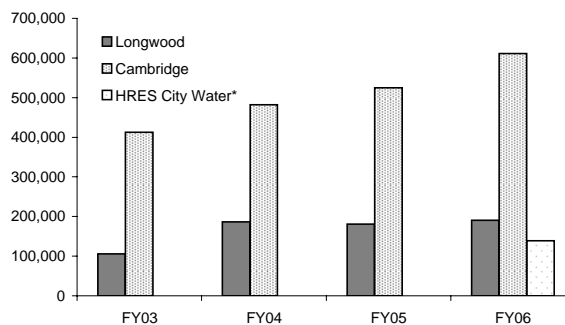


Total solid waste (trash + recycling) at Harvard has increased 64% between 1990 and 2006. Solid Waste and Recycling data for Cambridge and Allston was reported by UOS, Solid Waste and Recycling Department. Solid Waste and Recycling data for the Longwood campus was reported by the HMS and HSPH Operations Departments.

### Water Use in Cubic Feet (CCF): FY2006

	Per 1K Sq Ft	% Change	
		FY03-06	FY03-06
<b>FAS</b>	364,582	41	56%
<b>Business</b>	50,439	34	-3%
<b>Design</b>	1,953	11	27%
<b>Divinity</b>	4,576	25	5%
<b>Education</b>	4,824	22	62%
<b>Government</b>	6,503	25	0%
<b>Law</b>	23,557	26	-5%
<b>Medical</b>	168,540	68	132%
<b>Dental</b>	2,990	30	35%
<b>Public Health</b>	18,796	33	-39%
<b>Other</b>	293,359	35	N/A
<b>TOTAL</b>	<b>940,119</b>	<b>44</b>	<b>81%</b>

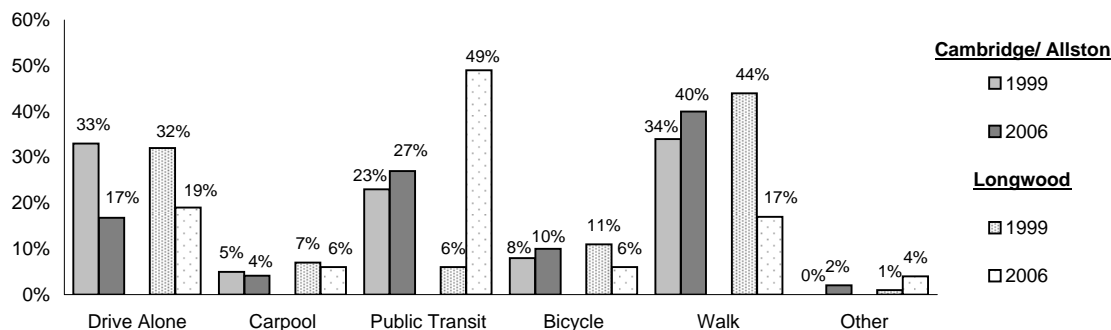
### Total Water Use at Harvard FY2003-FY2006



Cambridge & Allston data is from the UOS Utility Reports. Harvard Medical School and Dental School data is reported by HMS Facilities Operations. Harvard School of Public Health data is reported by HSPH Facilities Operations.

\* HRES city water data is not available prior to FY06, but will be included in Harvard total water use from FY06 onward.

**Commute Trends: FY1999-FY2006**

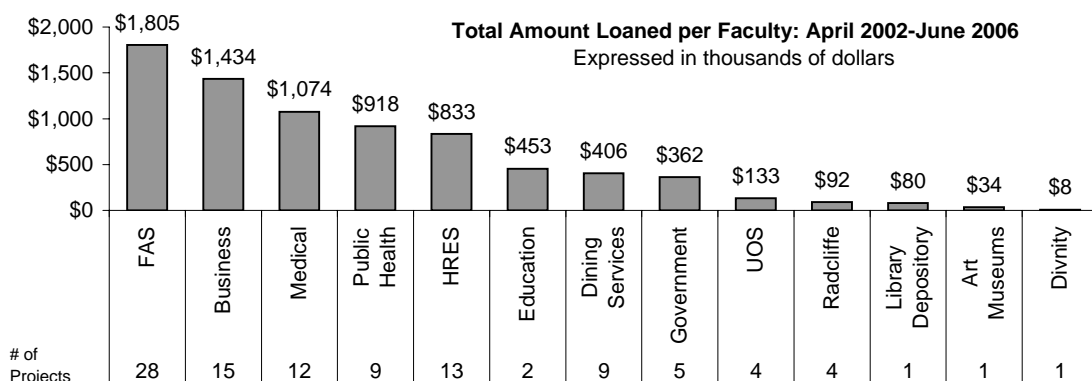


Cambridge Commute Type data is from UOS, Transportation Services Department, "Summary Commute Data Form 4". Longwood Commute Data is from the Harvard Medical School Parking Office.

**Green Campus Loan Fund: FY2003 - FY2006**

The Green Campus Loan Fund is a \$12 million fund that provides capital for high performance campus design, operations, maintenance and occupant behavior projects. Basic project eligibility guidelines state that projects must reduce the University's environmental impacts and meet specific pay-back requirements.

Environmental	FY2003	FY2006	Financial	FY2003	FY2006
Green House Gas Savings (tons eCO2)	2,704	25,798	Savings	\$745,562	\$2,566,754
Water Saving (gallons)	5,293,168	12,792,277	Return on Investment	23%	28%
Waste Recycled (lbs)	200,000	200,000	Amount Loaned	\$2,265,002	\$7,631,295



**Leadership in Energy and Environmental Design (LEED) Projects as of June 30, 2006**

Leadership In Energy and Environmental Design (LEED) is a rating system for green buildings, and provides a nationally accepted third-party verification that a building project meets the highest performance standards.

LEED Certified: The project has been third-party certified to meet the US Green Building Council LEED Standards.

LEED Registered: The project has registered for LEED Certification, but is not yet verified.

As of June 2007, Harvard has 7 projects certified and 16 projects registered. Visit the HGCI website for an up to date list of LEED projects at Harvard, [www.greencampus.harvard.edu](http://www.greencampus.harvard.edu).

**Registered LEED Projects**

Project Name	Bldg. Type	Gross Sq Ft
<b>Business</b>		
Wyss Hall	Offices	5,000
Hamilton Hall	Dormitory	48,000
<b>HRES<sup>(1)</sup></b>		
5 Cowperwaithe St.	Housing	208,343
<b>Library</b>		
90 Mount Auburn St.	Library	30,405

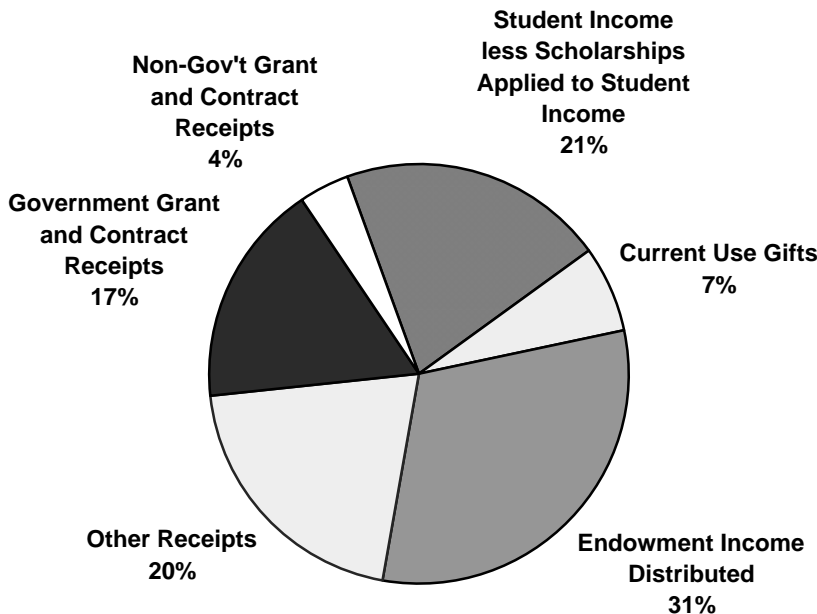
**Certified LEED Projects**

Project Name	Bldg. Type	Level	Gross Sq Ft
<b>Public Health</b>			
Landmark Center	Office	Certified	42,000
<b>Harvard Real Estate Services</b>			
One Western Ave.	Housing	Silver	229,000
Schlesinger Library	Library	Certified	24,000
<b>Outside Developer</b>			
Two Arrow St.	Theater/Office	Certified	36,080
<b>Dining Services</b>			
Mather Dunster	Kitchen/Servery	Silver	15,870

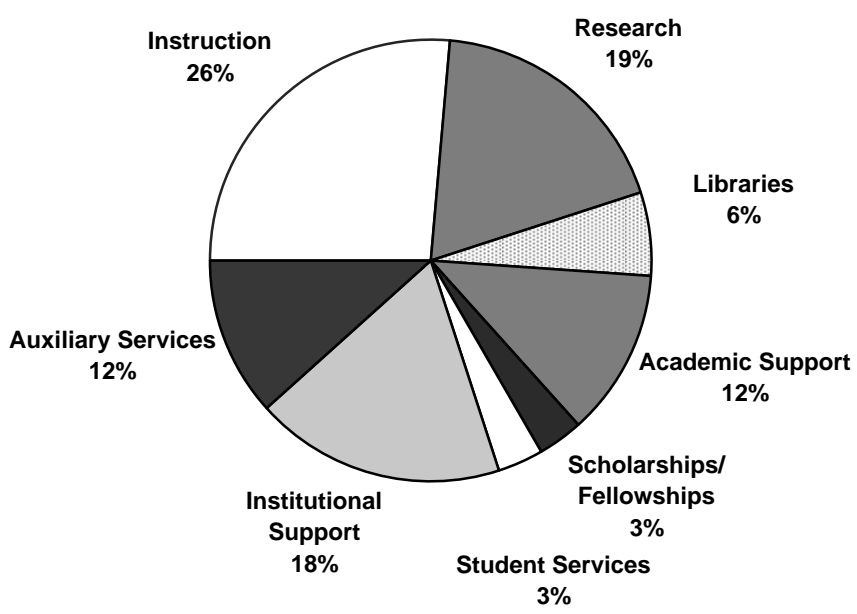


**Total University Income and Expenses for Fiscal Year Ended June 30, 2006**  
Expressed in thousands of dollars

**Total Income - \$2,999,583**



**Total Expenses - \$2,999,503**



SOURCE: FINANCIAL REPORT TO THE BOARD OF OVERSEERS

# Expenses

## Departmental Operating Expenses Year Ended June 30, 2006

Expressed in thousands of dollars



	Salaries and Wages	Employee Benefits	Scholarships/ Student Awards	Less: Financial Aid Applied against Income	Equipment and Supplies	Space and Occupancy	Depreciation	Other Expenses <sup>(1)</sup>	Total Expenses
<b>Faculty of Arts &amp; Sciences</b>									
Faculty of Arts & Sciences	\$333,991	\$88,462	\$160,487	(\$121,184)	\$57,964	\$133,262	\$64,321	\$138,075	\$855,378
Division of Continuing Education	18,367	4,026	5,175	(5,084)	1,189	1,990	665	13,291	39,619
FAS Museums	10,989	3,618	1,210	(4)	1,926	4,411	976	4,945	28,071
<b>Total Faculty of Arts &amp; Sciences</b>	<b>\$363,347</b>	<b>\$96,106</b>	<b>\$166,872</b>	<b>(\$126,272)</b>	<b>\$61,079</b>	<b>\$139,663</b>	<b>\$65,962</b>	<b>\$156,311</b>	<b>\$923,068</b>
<b>School of Business Administration</b>	131,103	36,083	16,727	(14,765)	17,361	26,909	20,375	116,055	349,848
School of Dental Medicine	12,574	3,810	1,941	(1,286)	2,350	3,760	1,789	6,696	31,634
Graduate School of Design	13,218	3,604	5,416	(4,547)	1,219	2,901	681	6,430	28,922
Divinity School	12,519	3,584	6,401	(5,389)	1,186	2,262	1,152	3,862	25,577
Graduate School of Education	28,255	7,806	8,864	(6,392)	2,327	4,986	648	14,524	61,018
School of Government	50,358	15,230	14,163	(9,027)	6,303	11,754	2,377	27,351	118,509
Law School	56,038	16,257	15,612	(12,111)	6,055	15,968	5,541	29,864	133,224
Medical School	146,395	45,653	48,935	(18,720)	40,052	82,860	45,226	125,371	515,772
Radcliffe Institute for Advanced Study	6,575	2,084	2,375	-	488	1,623	815	(3,904)	10,056
School of Public Health	80,266	24,753	14,455	(7,400)	13,850	29,434	9,176	84,718	249,252
<b>Other Faculties Subtotal</b>	<b>\$537,301</b>	<b>\$158,864</b>	<b>\$134,889</b>	<b>(\$79,637)</b>	<b>\$91,191</b>	<b>\$182,457</b>	<b>\$87,780</b>	<b>\$410,967</b>	<b>\$1,523,812</b>
<b>Total Faculties</b>	<b>\$900,648</b>	<b>\$254,970</b>	<b>\$301,761</b>	<b>(\$205,909)</b>	<b>\$152,270</b>	<b>\$322,120</b>	<b>\$153,742</b>	<b>\$567,278</b>	<b>\$2,446,880</b>
<b>Arnold Arboretum</b>	4,659	1,545	16	-	454	1,146	211	2,555	10,586
Harvard University Art Museums	10,237	3,548	120	(10)	4,112	1,048	1,445	4,661	25,161
Joint Center for Housing Studies	962	337	25	-	46	156	-	615	2,141
Nieman Foundation	1,248	404	1,104	-	85	364	25	1,284	4,514
Villa I Tatti	2,373	915	935	-	577	752	154	1,747	7,453
<b>Other Academic Departments Subtotal</b>	<b>\$19,479</b>	<b>\$6,749</b>	<b>\$2,200</b>	<b>(\$10)</b>	<b>\$5,274</b>	<b>\$3,466</b>	<b>\$1,835</b>	<b>\$10,862</b>	<b>\$49,855</b>
<b>Service Departments</b>	<b>\$114,647</b>	<b>\$39,869</b>	<b>\$652</b>	<b>(\$10)</b>	<b>\$44,341</b>	<b>\$11,426</b>	<b>\$33,369</b>	<b>\$34,979</b>	<b>\$279,273</b>
<b>Memorial Church</b>	<b>\$992</b>	<b>\$310</b>	<b>-</b>	<b>-</b>	<b>\$110</b>	<b>\$766</b>	<b>\$81</b>	<b>\$555</b>	<b>\$2,814</b>
<b>Central Administration <sup>(2)</sup></b>	<b>\$90,556</b>	<b>\$48,677</b>	<b>\$918</b>	<b>(\$28)</b>	<b>\$4,787</b>	<b>\$4,554</b>	<b>\$21,937</b>	<b>\$49,280</b>	<b>\$220,681</b>
<b>TOTAL UNIVERSITY EXPENSES</b>	<b>\$1,126,322</b>	<b>\$350,575</b>	<b>\$305,531</b>	<b>(\$205,957)</b>	<b>\$206,782</b>	<b>\$342,332</b>	<b>\$210,964</b>	<b>\$662,954</b>	<b>\$2,999,503</b>

(1) Includes expense credits and transfers.

(2) Includes Harvard University Library and other University funds.

## Market Value of Endowment Funds as of June 30, 2006



Expressed in thousands of dollars

Individual Unit Value: \$1,635.04 <sup>(1)</sup>

	Endowment Market Value <sup>(1)</sup>	Participating Units	Market Value % of Total
Arts and Sciences <sup>(2)</sup>	\$13,228,349	8,079,016	46.2%
Business	2,190,442	1,332,492	7.7%
Dental	181,704	111,131	0.6%
Design	358,613	219,329	1.3%
Divinity	517,453	316,476	1.8%
Education	436,859	267,185	1.5%
Government <sup>(3)</sup>	876,171	531,497	3.1%
Law	1,445,077	883,581	5.0%
Medical	3,363,899	2,056,842	11.8%
Radcliffe Institute for Advanced Study	472,816	289,176	1.7%
Public Health	979,870	599,292	3.4%
Other Academic Departments <sup>(4)</sup>	1,135,551	693,009	4.0%
University Science Initiatives	5,123	3,133	0.0%
Central Administration <sup>(5)</sup>	3,423,963	2,103,421	12.0%
<b>Subtotal</b>	<b>\$28,615,890</b>	<b>17,485,580</b>	<b>100.0%</b>
Pledge Balances	303,724	-	-
Interests in Perpetual Trusts held by Others	299,816	-	-
<b>Total Endowment</b>	<b>\$29,219,430</b>	<b>17,485,580</b>	<b>100.0%</b>

## Historical Market Value of Endowment

	June 30, 2003	June 30, 2004	June 30, 2005
Arts and Sciences <sup>(2)</sup>	\$8,743,246	\$10,256,052	\$11,711,315
Business	1,330,368	1,602,580	1,923,709
Dental	120,992	140,214	158,759
Design	244,803	283,266	321,190
Divinity	346,614	400,107	455,271
Education	294,038	342,062	389,178
Government <sup>(3)</sup>	582,141	672,674	765,781
Law	927,308	1,099,556	1,278,171
Medical	2,094,252	2,463,945	2,922,663
Radcliffe Institute for Advanced Study	289,939	355,221	404,234
Public Health	633,753	743,238	848,137
Other Academic Departments <sup>(4)</sup>	742,188	867,137	994,026
Central Administration <sup>(5)</sup>	2,284,532	2,672,320	3,049,370
<b>Subtotal</b>	<b>\$18,634,174</b>	<b>\$21,898,372</b>	<b>\$25,221,804</b>
Pledge Balances	445,244	443,656	379,327
Interests in Perpetual Trusts held by Others	215,317	245,277	251,917
<b>Total Endowment</b>	<b>\$19,294,735</b>	<b>\$22,587,305</b>	<b>\$25,853,048</b>

(1) Market value also includes endowment funds that are not unitized. This accounts for the difference between (unit price x number of units) and market value.

(2) Arts and Sciences includes: Continuing Education, DEAS, College Library, Museums, GSAS, Athletics, College Life and Student Services, and Dumbarton Oaks.

(3) Government includes Institute of Politics.

(4) Other Academic Departments include: Arnold Arboretum, Harvard University Art Museums, Nieman Foundation and Villa I Tatti.

(5) In addition to Central Administration, includes the Harvard University Press, Memorial Church, President's Funds, University Professorships, University Health Services and University Operations Services.

SOURCE: ANNUAL UNIVERSITY FINANCIAL REPORT

## Historical Endowment Performance: FY1987 - FY2007

Fiscal Year	Unit Value at Beginning of the Year <sup>(1)</sup>	Dollar Value and Percentage Beginning Value Per Unit						Actual Distribution Per Unit <sup>(3)</sup>	Spending Rate <sup>(4)</sup>
		Income		Capital Gain		Total Return <sup>(2)</sup>			
1987	\$224.75	\$11.16	5.0%	\$32.03	14.3%	\$43.19	19.2%	\$8.09	3.6%
1988	256.78	10.41	4.1%	3.57	1.4%	13.98	5.4%	8.49	3.3%
1989	260.35	13.94	5.4%	18.27	7.0%	32.21	12.4%	10.16	3.9%
1990	278.62	14.57	5.2%	6.04	2.2%	20.61	7.4%	10.65	3.8%
1991	284.66	12.75	4.5%	(9.72)	(3.4%)	3.03	1.1%	11.96	4.2%
1992	274.94	11.87	4.3%	20.26	7.4%	32.13	11.7%	12.44	4.5%
1993	295.20	11.70	4.0%	36.68	12.4%	48.38	16.4%	14.08	4.8%
1994	331.88	13.19	4.0%	19.05	5.7%	32.24	9.7%	15.01	4.5%
1995	350.93	11.90	3.4%	45.87	13.1%	57.77	16.5%	16.07	4.6%
1996	396.80	15.23	3.8%	86.03	21.7%	101.26	25.5%	17.20	4.3%
1997 <sup>(5)</sup>	482.83	14.60	3.0%	106.53	22.1%	121.13	25.1%	19.84	4.1%
1998	589.36	10.64	1.8%	108.45	18.4%	119.09	20.2%	21.90	3.7%
1999	697.81	21.57	3.1%	60.94	8.7%	82.51	11.8%	23.14	3.3%
2000	758.75	14.42	1.9%	227.20	29.9%	241.62	31.8%	30.15	4.0%
2001	985.95	19.10	1.9%	(45.75)	(4.6%)	(26.65)	(2.7%)	32.92	3.3%
2002	940.20	20.63	2.2%	(25.42)	(2.7%)	(4.79)	(0.5%)	45.32	4.8%
2003	914.78	13.88	1.5%	98.73	10.8%	112.61	12.3%	47.11	5.2%
2004	1013.51	10.39	1.0%	202.17	19.9%	212.56	21.0%	49.70	4.9%
2005	1215.68	21.16	1.7%	210.00	17.3%	231.16	19.0%	54.17	4.5%
2006	1425.68	27.27	1.9%	209.36	14.7%	236.63	16.6%	60.99	4.3%
2007	\$1,635.04	*	*	*	*	*	*	\$69.73	4.3%

### Average Annual Growth Rates

20 YEAR	10.4%	-	-	-	-	-	-	11.4%	-
10 YEAR	13.0%	-	-	-	-	-	-	13.4%	-
5 YEAR	11.7%	-	-	-	-	-	-	9.0%	-
1 YEAR	14.7%	-	-	-	-	-	-	14.3%	-

(1) Harvard's endowment comprises approximately 11,000 separate funds. Each fund has been unitized and the separate funds hold "units of the endowment" as their value. Column one shows the value of units as of July 1.

(2) The total return percentage reported by the Harvard Management Company is slightly higher than the one listed above as it is calculated based on reinvestment of all earnings on a monthly basis.

(3) As of July 1, from income earned the previous fiscal year.

(4) This data is based upon the per unit distribution rate established by the Corporation for each fiscal year. The aggregate spending rate for FY07 was 4.6%. Aggregate spending rate percentage is based upon actual endowment distributions in combination with approved decapitalizations of endowment principal made during the fiscal year.

(5) Net of the \$1.28 per unit fringe supplement, the FY97 payout is \$18.56, and the spending rate is 3.84%.

\* Value not available at time of publication.

SOURCE: INTERNAL ENDOWMENT REPORTS



On the Cover:

Magnolia blossoms frame the tower over the Lowell House dining hall at Harvard University.

Harvard College is the oldest institution of higher learning in the United States. It was established in 1636 by vote of the Great and General Court of the Massachusetts Bay Colony and was named for its first benefactor, John Harvard of Charlestown, Massachusetts. Upon his death in 1638, the young minister left his library and half his estate to the new College. Founded 16 years after the arrival of the Pilgrims at Plymouth, the College has grown from nine students with a single master to an enrollment of more than 20,000 degree candidates, including undergraduate and graduate students in 10 graduate and professional schools.

Photo by Jon Chase / Harvard University News Office