

2008-2009 FACT BOOK

Pages from the current year's Fact book will be posted as they become available.

ORGANIZATION

Central Administration

Faculties and Allied Institutions

Research and Academic Centers

PEOPLE

Degree Student Enrollment

Degrees Conferred

International Students

Summer School and Non-Degree Students

Faculty

Staff

RESOURCES

Tuition, Fees, and Financial Aid

Sponsored Programs

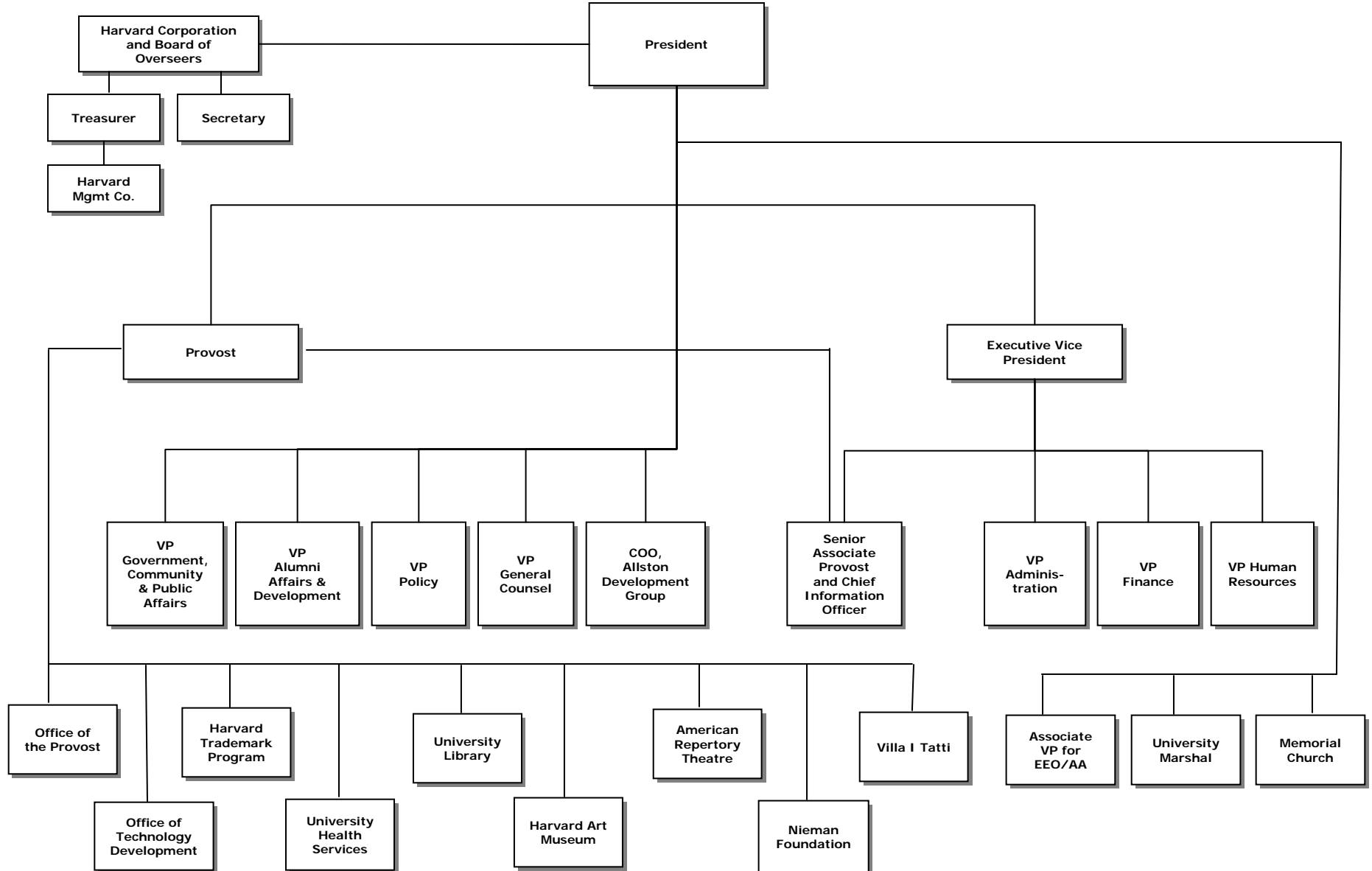
Library

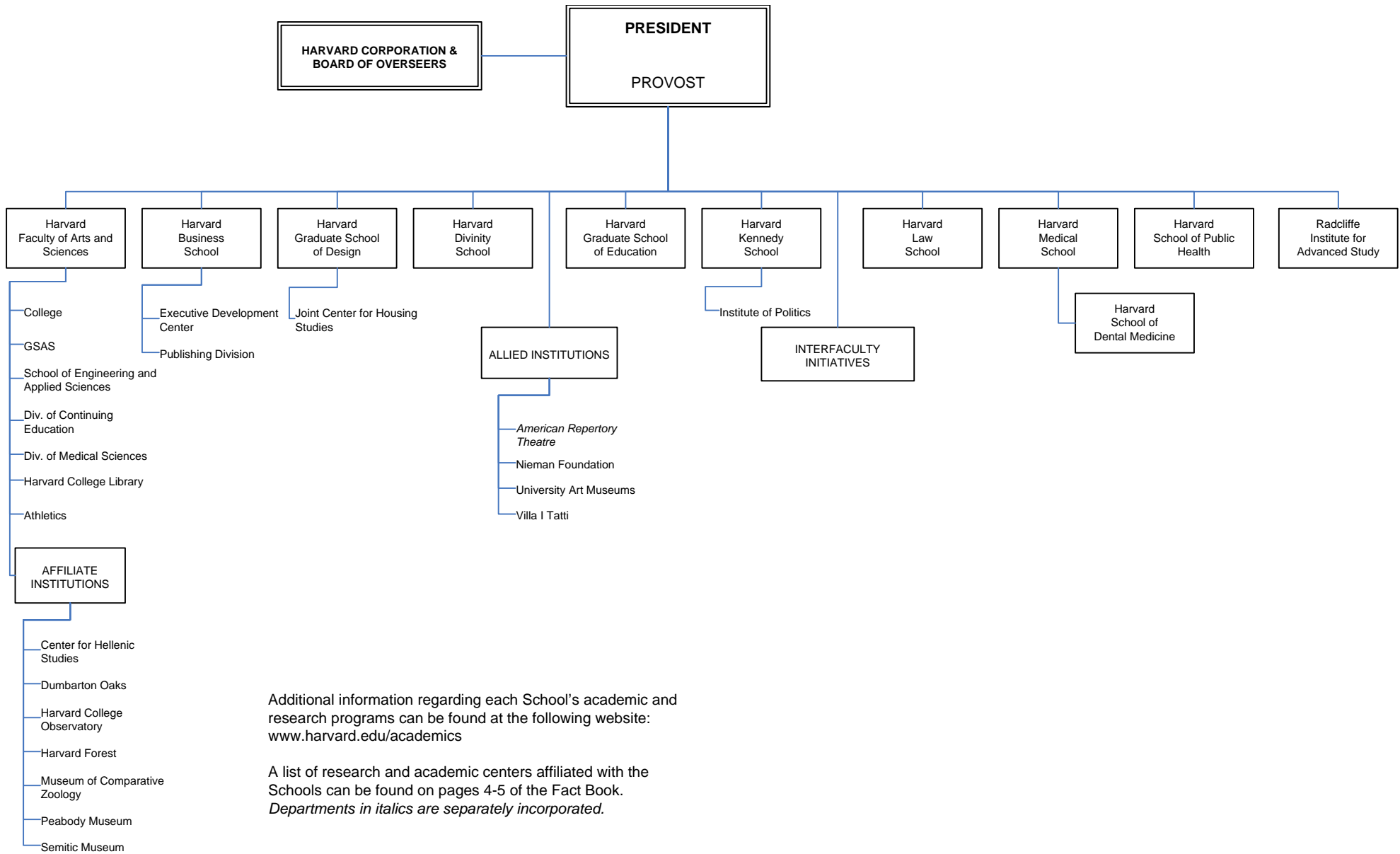
Physical Plant

Environmental Performance

FY2008 Income and Expenses

Endowment





Harvard University Research and Academic Centers

FACULTY of ARTS and SCIENCES

Aga Khan Program for Islamic Architecture⁽¹⁾
 Carpenter Center for the Visual Arts
 Center for American Political Studies
 Center for Brain Science*
 Center for Hellenic Studies
 Center for Jewish Studies
 Center for Middle Eastern Studies
 Center for Nanoscale Systems
 Center for Systems Biology
 Davis Center for Russian and Eurasian Studies
 W.E.B. Du Bois Institute for African and African-American
 Research
 Dumbarton Oaks
 Fairbank Center for East Asian Research
 Film Study Center
 Minda de Gunzburg Center for European Studies
 Harvard University Asia Center***
 Harvard College Observatory
 Harvard Forest
 Harvard Smithsonian Center for Astrophysics
 Harvard University Center for the Environment***
 Harvard University Committee on African Studies***
 Harvard-Yenching Institute
 Humanities Center***
 Institute for Quantitative Social Science***
 Center for Geographic Analysis⁽²⁾
 Harvard-MIT Data Center⁽²⁾
 Institute for Theory and Computation
 Korea Institute
 Program for Evolutionary Dynamics
 Edwin O. Reischauer Institute of Japanese Studies
 David Rockefeller Center for Latin American Studies***
 South Asia Initiative at Harvard***
 Prince Alwaleed Bin Talal Islamic Studies Program***
 Ukrainian Research Institute
 Charles Warren Center for Studies in American History
 Weatherhead Center for International Affairs
 Harvard Academy for International and Area Studies⁽³⁾
 Program on U.S. - Japan Relations⁽³⁾

BUSINESS

California Research Center
 C. Roland Christensen Center for Teaching and Learning
 Global Initiative
 Asia-Pacific Research Center
 Europe Research Center
 India Research Center
 Japan Research Center
 Latin America Research Center
 Healthcare Initiative
 Institute for Strategy and Competitiveness*

BUSINESS (cont.)

Leadership Initiative
 Arthur M. Rock Center for Entrepreneurship
 Social Enterprise Initiative

DESIGN

Aga Khan Program at the Graduate School of Design
 Alternative Futures Initiative
 Center for Technology and Environment
 Joint Center for Housing Studies*
 Real Estate Academic Initiative***

DIVINITY

Center for the Study of World Religions
 Women's Studies in Religion Program

EDUCATION

Achievement Gap Initiative*
 Change Leadership Group
 Collaborative on Academic Careers in Higher Education
 Executive Leadership Program for Educators at Harvard
 University (ExEL)*
 Harvard Family Research Project
 Programs in Professional Education/The Principals'
 Center
 Project for Policy Innovation in Education
 Project Zero
 Public Education Leadership Project*
 Three-to-Third
 WIDE World⁽⁴⁾

ENGINEERING AND APPLIED SCIENCES

Center for Research on Computation and Society
 Harvard Institute for Biologically Inspired Engineering
 Institute for Quantum Science and Engineering
 Kavli Institute for Bionano Science and Engineering
 Materials Research Science and Engineering Center
 Nanoscale Science and Engineering Center⁽⁵⁾
 Rowland Institute

GOVERNMENT

Roy and Lila Ash Institute for Democratic Governance
 and Innovation
 Robert and Renee Belfer Center for Science and
 International Affairs
 Carr Center for Human Rights Policy
 Center for International Development **
 Center for Public Leadership
 Harvard Environmental Economics Program**
 Hauser Center for Nonprofit Organizations**
 Institute of Politics
 Joint Center for Housing Studies*

(1) The Aga Khan Program for Islamic Architecture is a joint program with M.I.T.

(2) These Programs are housed and administered within the Institute for Quantitative Social Science

(3) These Programs are housed and administered within the Weatherhead Center.

(4) WIDE is the Wide-scale Interactive Development for Educators.

(5) The Nanoscale Science and Engineering Center is a joint program with M.I.T., U.C.S.B., and the Boston Museum of Science.

* These Programs represent collaborations between two or more Schools.

** These Programs are housed in particular Schools and report to a dean, but have been granted University-Wide Status.

*** These initiatives have a joint reporting structure to the Provost and to the dean of their home School.

SOURCE: SCHOOLS, OFFICE OF THE PROVOST

Harvard University Research and Academic Centers

GOVERNMENT (cont.)

Mossavar-Rahmani Center for Business and Government
 Joan Shorenstein Center on the Press, Politics and Public Policy
 A. Alfred Taubman Center for State and Local Government⁽¹⁾
 Malcolm Wiener Center for Social Policy
 Women and Public Policy Program

MEDICINE

Center for Biomedical Informatics
 Center for Craniofacial Tissue Engineering
 Center for Genetics and Genomics, Harvard Medical School-Partners Healthcare*
 Center for Health and the Global Environment
 Center for Hereditary Deafness*
 Center for Immunodeficiency
 Center for Integration of Medicine and Innovative Technology
 Center for Magnetic Resonance*
 Center for Mental Health and Media*
 Center for Neurofibromatosis and Allied Disorders*
 Center for Palliative Care
 Dana Farber/Harvard Cancer Center*
 Division for Research and Education in Complementary and Integrative Medical Therapies
 Division of AIDS*
 Division of Emergency Medicine
 Division of Health Policy Research and Education*
 Division of Health Sciences and Technology
 Division of Medical Ethics*
 Division of Nutrition*
 Division on Primary Care*
 Division of Service Learning
 Division of Sleep Medicine
 Harvard Catalyst: The Harvard Clinical and Translational Science Center
 Harvard Clinical Research Institute
 Harvard-Mahoney Neuroscience Institute*
 Harvard NeuroDiscovery Center
 Harvard Skin Disease Research Center
 ICCB – Longwood Screening Facility*
 Institute of Proteomics
 JDRF Center for Immunological Tolerance at Harvard⁽²⁾
 New England Primate Research Center
 New England Regional Center of Excellence for Biodefense and Emerging Infectious Diseases*

LAW

Berkman Center for Internet and Society***
 Child Advocacy Program
 East Asian Legal Studies Program
 Environmental Law and Policy Program
 European Law Research Center
 Fund for Tax and Fiscal Policy Research
 Charles Hamilton Houston Institute for Race and Justice
 Human Rights Program

LAW (cont.)

Islamic Legal Studies Program
 Labor and Worklife Program
 Legal History Program
 John M. Olin Center for Law, Economics and Business
 Petrie-Flom Center for Health Law Policy, Biotechnology, and Ethics*
 Program on Corporate Governance
 Program on International Financial Systems
 Program on Negotiation
 Program on the Legal Profession

PUBLIC HEALTH

Francois-Xavier Bagnoud Center for Health and Human Rights***
 Center for Health Communication
 Center for Health Decision Science
 Harvard Center for Population and Development Studies***
 Harvard Injury Control Center
 Harvard School of Public Health AIDS Initiative

RADCLIFFE INSTITUTE FOR ADVANCED STUDY

Radcliffe Institute Fellowship Program
 Arthur and Elizabeth Schlesinger Library on the History of Women in America

UNIVERSITY INTERFACULTY INITIATIVES⁽³⁾

Advanced Leadership Program at Harvard (pilot program)
 Francois-Xavier Bagnoud Center for Health and Human Rights***
 Berkman Center for Internet and Society***
 Center on the Developing Child
 Harvard Center for Population and Development Studies***
 Harvard China Fund
 Harvard Humanitarian Initiative
 Harvard Initiative for Global Health
 Harvard Stem Cell Institute
 Harvard University Asia Center***
 Harvard University Center for the Environment***
 Harvard University Committee on African Studies***
 Harvard University Committee on Human Rights Studies
 Harvard University Native American Program
 Harvard University Program in Ethics and Health Humanities Center***
 Institute for Quantitative Social Science***
 Microbial Sciences Initiative
 Mind/Brain/Behavior Initiative
 Origins of Life Initiative
 Program in Health Policy
 Program on Health Systems Improvement
 Real Estate Academic Initiative***
 David Rockefeller Center for Latin American Studies***
 Edmond J. Safra Foundation Center for Ethics
 South Asia Initiative at Harvard***
 Prince Alwaleed Bin Talal Islamic Studies Program***

(1) The Taubman Center includes the Rappaport Institute for Greater Boston.

(2) JDRF is the Juvenile Diabetes Research Foundation.

(3) These Initiatives report to the Provost.

* These Programs represent collaborations between two or more Schools.

** These Programs are housed in particular Schools and report to a dean, but have been granted University-Wide Status.

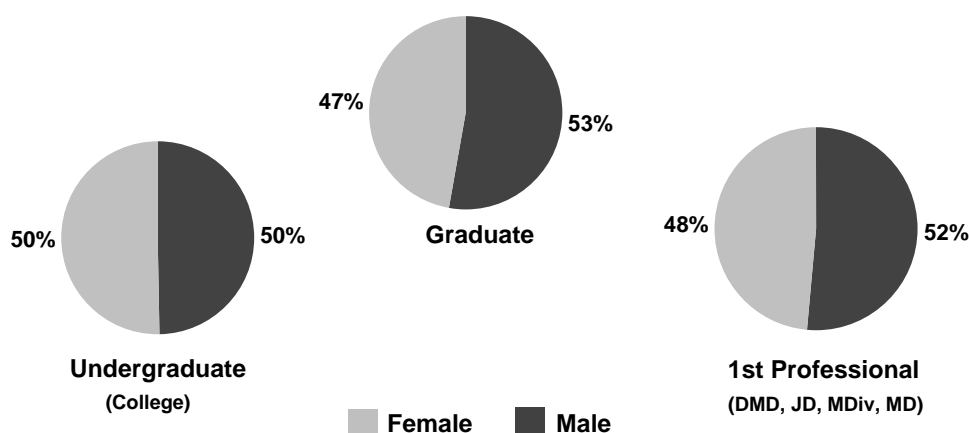
*** These initiatives have a joint reporting structure to the Provost and to the dean of their home School.

SOURCE: SCHOOLS, OFFICE OF THE PROVOST

Degree Student Head Count: Fall 2008

Counts taken as of October 15, 2008

College ^(1,4)				Full-Time	Part-Time	Total
	Male	Female	Total			
Freshmen	824	845	1,669	1,669	-	1,669
Sophomores	844	862	1,706	1,703	3	1,706
Juniors ⁽²⁾	788	884	1,672	1,669	3	1,672
Seniors	859	772	1,631	1,626	5	1,631
Subtotal	3,315	3,363	6,678	6,667	11	6,678
GSAS ^(3,4)						
Division of Med. Sci.	230	306	536	536	-	536
All Other	1,805	1,379	3,184	3,167	17	3,184
Subtotal	2,035	1,685	3,720	3,703	17	3,720
Business	1,172	680	1,852	1,852	-	1,852
Dental	98	112	210	209	1	210
Design	314	296	610	608	2	610
Divinity	197	236	433	411	22	433
Education	216	686	902	805	97	902
Government	540	400	940	880	60	940
Law	1,064	888	1,952	1,952	-	1,952
Medical	392	390	782	782	-	782
Public Health	304	530	834	644	190	834
Extension						
Undergraduate	250	228	478	223	255	478
Graduate	488	441	929	126	803	929
Subtotal, All Degree Students	10,385	9,935	20,320	18,862	1,458	20,320
Adj. for Joint Degree Students	(55)	(43)	(98)			(98)
TOTAL	10,330	9,892	20,222			20,222



(1) Students in the Advanced Standing Program are counted as Juniors in their second year and Seniors in their third and fourth year. College total excludes students who are studying abroad.

(2) Counts for Juniors include 27 undergraduates unclassified by year.

(3) Candidates for the Ph.D. are enrolled in GSAS but may cross register for courses in other faculties.

(4) GSAS and Harvard College include engineering students.

SOURCE: REGISTRAR OFFICES

Historical Enrollments: Fall 2003 - 2008 ⁽¹⁾

Degree Student Head Count by School

Counts taken as of October 15

	2003	2004	2005	2006	2007	2008
College ^(2,4)	6,597	6,562	6,613	6,715	6,648	6,678
GSAS ^(3,4)	3,510	3,638	3,753	3,750	3,682	3,720
Business	1,832	1,823	1,851	1,855	1,854	1,852
Dental	247	243	240	243	250	210
Design	595	619	579	618	602	610
Divinity	455	428	423	439	453	433
Education	1,080	1,069	975	971	905	902
Government	924	956	944	1,029	930	927
Law	1,899	1,921	1,948	1,966	1,966	1,952
Medical	780	766	784	818	809	782
Public Health	737	825	787	771	797	834
Extension						
Undergraduate	403	385	389	385	433	478
Graduate	676	592	599	590	700	929
Subtotal, All Degree Students	19,735	19,827	19,885	20,150	20,029	20,307
Adj. for Joint Degree Students	(52)	(58)	(65)	(72)	(74)	
TOTAL	19,683	19,769	19,820	20,078	19,955	20,307
Enrollment Level ⁽⁵⁾	2003	2004	2005	2006	2007	2008
Undergraduates						
Full-Time	6,767	6,722	6,792	6,880	6,837	6,890
Part-Time	233	225	210	220	244	266
Subtotal	7,000	6,947	7,002	7,100	7,081	7,156
Graduate Students						
Full-Time	9,038	9,120	9,112	9,274	9,224	9,223
Part-Time	1,004	1,059	1,026	963	935	1,178
Subtotal	10,042	10,179	10,138	10,237	10,159	10,401
1st Professional Degree ⁽⁶⁾						
Full-Time	2,668	2,680	2,728	2,796	2,782	2,749
Part-Time	25	21	17	17	7	14
Subtotal	2,693	2,701	2,745	2,813	2,789	2,763
TOTAL	19,735	19,827	19,885	20,150	20,029	20,320

(1) Several Harvard schools enrolled students displaced by Hurricane Katrina during Fall 2005. These students are included in the counts for non-degree students on page 17.

(2) College totals exclude students who were studying abroad at the time data was compiled.

(3) Candidates for the Ph.D. are enrolled in GSAS but may cross register for courses in other faculties.

(4) Counts for GSAS and Harvard College include engineering students.

(5) Includes degree candidates from the Extension School. Not adjusted for joint degree students.

(6) 1st Professional degrees include DMD, JD, MDiv, and MD.

SOURCE: REGISTRAR OFFICES

Student Enrollment by Degree: Fall 2008
 Counts taken as of October 15, 2008

		Male		Female		Total
		Full-Time	Part-Time	Full-Time	Part-Time	
College ^(1,2)	A.B., S.B.	3,310	5	3,357	6	6,678
GSAS ⁽²⁾	A.M., S.M., M.E.	86	9	65	7	167
	Ph.D.	1,940	-	1,612	1	3,553
Business	M.B.A.	1,141	-	664	-	1,805
	D.B.A.	31	-	16	-	47
Dental	D.M.D.	58	-	82	1	141
	M.M.Sc.	24	-	17	-	41
	D.M.Sc.	14	-	6	-	20
	Cert.	2	-	6	-	8
Design	M.Arch.	170	-	152	-	322
	M.A.U.D., M.L.A.U.D.	34	-	16	-	50
	M.Des.	37	-	22	-	59
	M.L.A.	31	-	66	-	97
	M.U.P.	28	1	24	1	54
	D.Des.	13	-	15	-	28
Divinity	M.Div.	62	4	96	9	171
	M.T.S.	97	2	110	5	214
	Th.M.	6	2	-	-	8
	Th.D.	24	-	16	-	40
Education	Ed.M.	101	13	391	53	558
	Ed.D.	89	13	209	18	329
	C.A.S.	-	-	15	-	15
Government	M.P.A. ⁽³⁾	204	14	113	8	339
	M.P.A.I.D.	74	4	48	2	128
	M.P.P.	213	17	205	15	450
	M.U.P.	5	-	5	-	10
	Ph.D.	9	-	4	-	13
Law	J.D.	918	-	805	-	1,723
	LL.M.	99	-	59	-	158
	S.J.D.	47	-	24	-	71
Medical	M.D.	370	-	358	-	728
	M.M.Sc.	22	-	32	-	54
Public Health	M.P.H., M.O.H.	80	42	102	62	286
	M.S.	58	37	145	16	256
	D.P.H.	2	1	4	3	10
	D.S.	76	8	177	21	282
Extension	A.A., A.L.B.	122	128	101	127	478
	A.L.M., Grad. Cert.	65	423	61	380	929
	TOTAL ⁽⁴⁾	9,662	723	9,200	735	20,320

(1) College total excludes students who are studying abroad.

(2) Harvard College and GSAS include engineering students.

(3) M.P.A. Program includes the two-year M.P.A. program and the one-year M.P.A. Mid-Career program.

(4) Not adjusted for joint degree students.

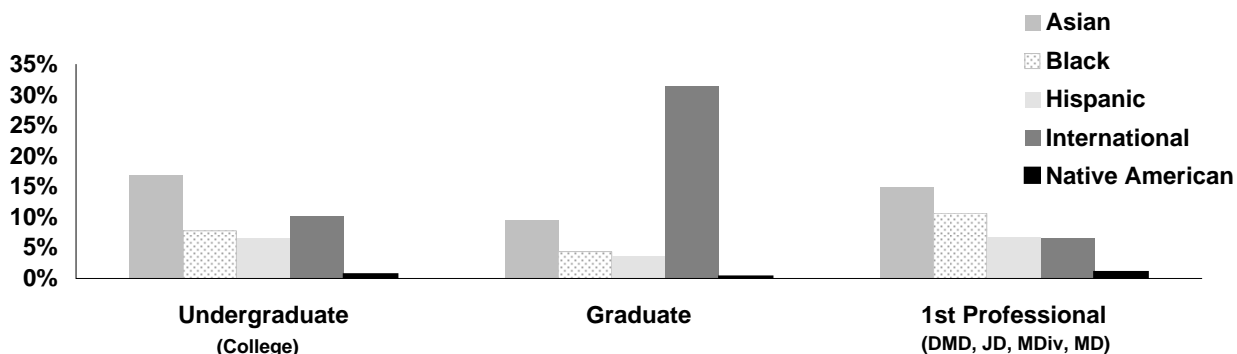
SOURCE: REGISTRAR OFFICES

Degree Student Enrollment by Ethnicity: Fall 2008

Counts taken as of October 15, 2008

	College	GSAS	Business	Dental	Design	Divinity	Education	Government	Law	Medical	Public Health	Extension	Total
Asian/Pacific Islander													
Male	460	145	122	13	34	6	17	38	84	106	25	91	1,141
Female	666	178	100	26	50	14	77	41	86	107	52	67	1,464
Subtotal	1,126	323	222	39	84	20	94	79	170	213	77	158	2,605
Percent	17%	9%	12%	19%	14%	5%	10%	8%	9%	27%	9%	11%	12.8%
Black/Non-Hispanic													
Male	236	35	46	5	6	12	23	21	77	35	13	37	546
Female	286	71	55	2	2	21	53	28	116	36	27	32	729
Subtotal	522	106	101	7	8	33	76	49	193	71	40	69	1,275
Percent	8%	3%	5%	3%	1%	8%	8%	5%	10%	9%	5%	5%	6.3%
Hispanic													
Male	206	60	45	3	11	9	15	27	62	32	6	47	523
Female	236	48	22	3	15	12	36	30	54	28	16	32	532
Subtotal	442	108	67	6	26	21	51	57	116	60	22	79	1,055
Percent	7%	3%	4%	3%	4%	5%	6%	6%	6%	8%	3%	6%	5.2%
International Students													
Male	397	741	409	25	110	26	29	237	199	31	120	62	2,386
Female	283	471	181	22	85	15	95	140	137	33	163	79	1,704
Subtotal	680	1,212	590	47	195	41	124	377	336	64	283	141	4,090
Percent	10%	33%	32%	22%	32%	9%	14%	40%	17%	8%	34%	10%	20.1%
Native American													
Male	21	3	7	-	2	4	2	6	6	4	-	4	59
Female	23	4	1	-	1	-	2	6	6	5	3	4	55
Subtotal	44	7	8	-	3	4	4	12	12	9	3	8	114
Percent	1%	0%	0%	0%	0%	1%	0%	1%	1%	1%	0%	1%	0.6%
White/Non-Hispanic													
Male	1,546	835	414	38	125	109	101	154	496	160	98	441	4,517
Female	1,370	711	248	32	117	153	336	110	400	165	179	429	4,250
Subtotal	2,916	1,546	662	70	242	262	437	264	896	325	277	870	8,767
Percent	44%	42%	36%	33%	40%	61%	48%	28%	46%	42%	33%	62%	43.1%
Unknown/Other													
Male	449	216	129	14	26	31	29	57	140	24	42	56	1,213
Female	499	202	73	27	26	21	87	45	89	16	90	26	1,201
Subtotal	948	418	202	41	52	52	116	102	229	40	132	82	2,414
Percent	14%	11%	11%	20%	9%	12%	13%	11%	12%	5%	16%	6%	11.9%
TOTAL ⁽¹⁾	6,678	3,720	1,852	210	610	433	902	940	1,952	782	834	1,407	20,320

Percentage of Minority and International Students by Enrollment Level

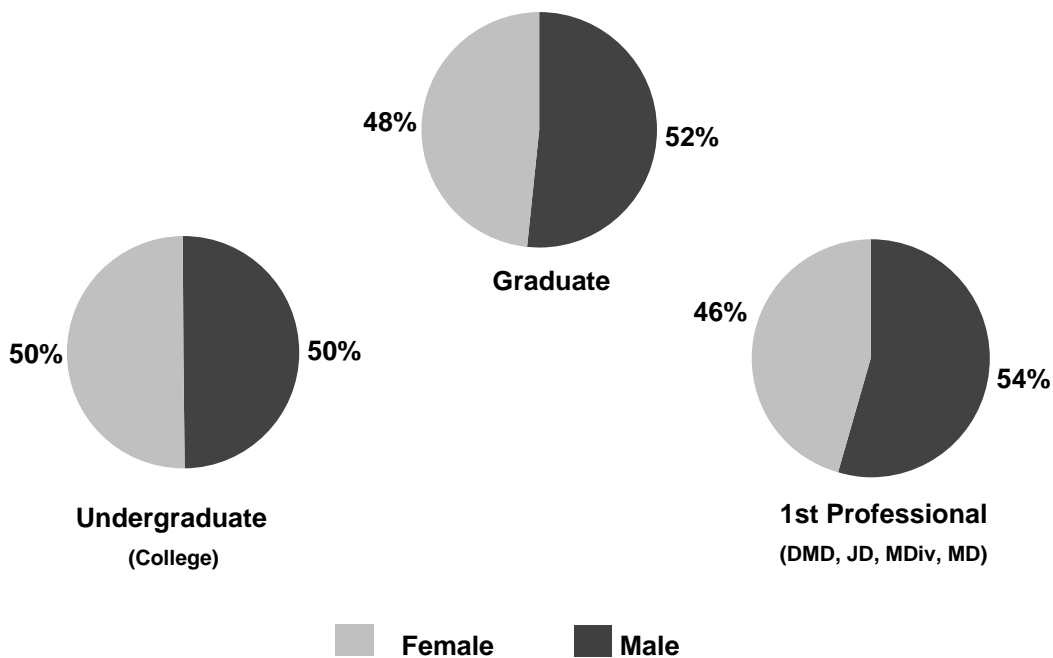


(1) Not adjusted for joint degree students. Harvard College and GSAS include engineering students.

SOURCE: REGISTRAR OFFICES

Degrees Conferred by School ⁽¹⁾ Academic Year 2007-2008

	<u>Male</u>	<u>Female</u>	<u>Total</u>
College	857	866	1,723
GSAS	554	428	982
Business	600	312	912
Dental	53	46	99
Design	134	102	236
Divinity	81	92	173
Education	143	464	607
Government	340	237	577
Law	421	345	766
Medical	97	99	196
Public Health	185	269	454
Extension			
Undergraduate	55	63	118
Graduate	198	198	396
TOTAL	3,718	3,521	7,239



(1) Not adjusted for joint degree students.
SOURCE: REGISTRAR OFFICES

Degrees Conferred by Program: Academic Year 2007-2008 ⁽¹⁾

		Male	Female	Total
College	A.B.	851	859	1,710
	S.B.	6	7	13
GSAS	A.M.	208	172	380
	M.E.	1	-	1
	S.M.	53	14	67
	Ph.D.	292	242	534
Business	M.B.A.	597	310	907
	D.B.A.	3	2	5
Dental	D.M.D.	18	22	40
	M.M.Sc.	9	5	14
	D.M.Sc.	3	2	5
	Certificate	23	17	40
Design	M.Arch.	73	43	116
	M.A.U.D., M.L.A.U.D.	8	13	21
	M.Des.	25	8	33
	M.L.A.	10	15	25
	M.U.P.	9	20	29
	D.Des.	9	3	12
Divinity	M.Div.	17	26	43
	M.T.S.	56	60	116
	Th.M.	2	1	3
	Th.D.	6	5	11
Education	Ed.M.	134	418	552
	Ed.D.	8	32	40
	C.A.S.	1	14	15
Government	M.P.A. (1 YEAR)	105	79	184
	M.P.A. (2 YEAR)	62	30	92
	M.P.A.I.D.	47	36	83
	M.P.P.	125	89	214
	M.U.P.	1	3	4
Law	J.D.	323	265	588
	LL.M.	93	75	168
	S.J.D.	5	5	10
Medical	M.D.	86	88	174
	M.M.Sc.	11	11	22
Public Health	M.P.H.	117	145	262
	M.S.	53	90	143
	D.P.H.	2	1	3
	D.S.	13	33	46
Extension	A.A.	3	4	7
	A.L.B.	52	59	111
	A.L.M.	155	156	311
	Graduate Certificates	43	42	85
	TOTAL	3,718	3,521	7,239

(1) Not adjusted for joint degree students.

SOURCE: REGISTRAR OFFICES

Harvard College Undergraduate Degrees Conferred by Concentration ⁽¹⁾
Academic Year 2007-2008

	Concentration	Male	Female	Total
Humanities	English and American Literature and Language	29	59	88
	History and Literature	18	26	44
	Visual and Environmental Studies	8	20	28
	Romance Languages and Literatures	6	16	22
	Literature	9	12	21
	History of Art and Architecture	4	15	19
	Music	7	8	15
	Near Eastern Languages and Civilizations	9	5	14
	East Asian Studies	8	6	14
	Linguistics	6	7	13
	Philosophy	7	5	12
	Classics	5	7	12
	Comparative Study of Religion	2	8	10
	Slavic Languages and Literature	2	4	6
	German	1	3	4
	Folklore and Mythology	2	1	3
	Sanskrit and Indian Studies	-	1	1
		Humanities Subtotal	123	203
Natural Sciences	Biochemical Sciences	39	43	82
	Biology	35	33	68
	Mathematics	27	14	41
	Engineering Sciences (S.B. and A.B.)	20	13	33
	Applied Mathematics	27	5	32
	Physics	22	8	30
	Chemistry	12	17	29
	Neurobiology	9	17	26
	Human Evolutionary Biology	6	19	25
	Computer Science	19	4	23
	Environmental Science and Public Policy	8	13	21
	Earth and Planetary Sciences	7	7	14
	Chemistry and Physics	6	6	12
	Organismic and Evolutionary Biology	3	5	8
	Chemical and Physical Biology	3	2	5
	Statistics	1	3	4
	Astronomy and Astrophysics	-	3	3
	Cell & Molecular Biology, Other	-	3	3
		Natural Sciences Subtotal	244	215
Social Sciences	Economics	187	90	277
	Government	119	106	225
	Psychology	40	72	112
	Social Studies	57	44	101
	Anthropology	28	49	77
	History	36	32	68
	Sociology	5	20	25
	History of Science	8	15	23
	Studies of Women, Gender and Sexuality	1	10	11
	African and African American Studies	2	3	5
		Social Sciences Subtotal	483	441
	Special Concentrations Subtotal	7	7	14
	Grand Total ⁽¹⁾	857	866	1,723
	Joint Concentrators	42	37	79
	Unduplicated Student Count	815	829	1,644

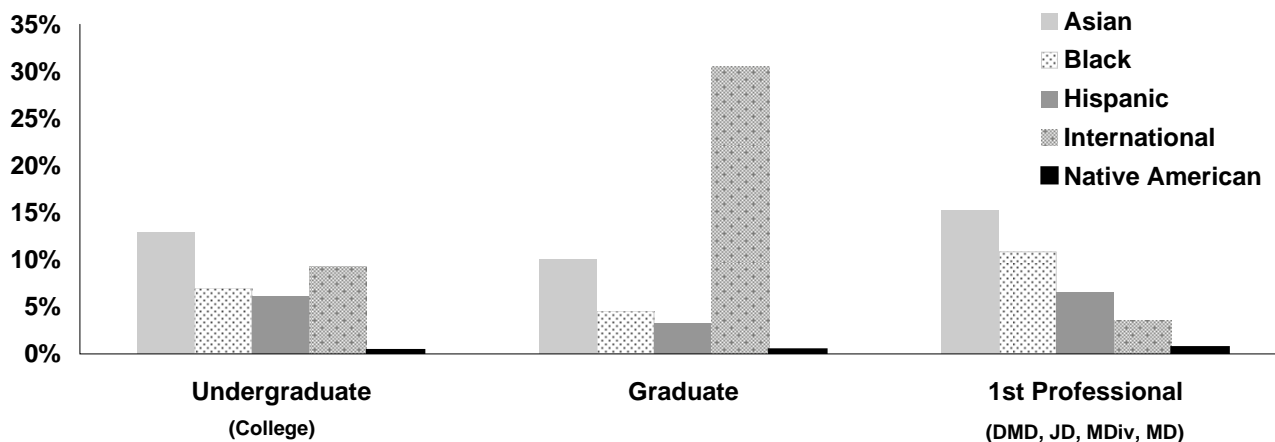
(1) Both concentrations for joint concentrators are included. An adjustment is provided to obtain the total unduplicated student count.

SOURCE: REGISTRAR OFFICES

Degrees Conferred by Student Ethnicity: Academic Year 2007-2008 ⁽¹⁾

	College	GSAS	Business	Dental	Design	Divinity	Education	Government	Law	Medical	Public Health	Extension	Total
Asian/Pacific Islander													
Male	120	48	49	12	15	6	11	21	26	18	17	37	380
Female	142	54	52	18	20	7	48	21	30	28	27	27	474
Subtotal	262	102	101	30	35	13	59	42	56	46	44	64	854
Percent	15%	10%	11%	30%	15%	8%	10%	7%	7%	23%	10%	12%	11.8%
Black/Non-Hispanic													
Male	49	9	25	5	2	5	19	20	32	14	7	9	196
Female	80	14	23	3	3	4	35	13	31	12	22	11	251
Subtotal	129	23	48	8	5	9	54	33	63	26	29	20	447
Percent	7%	2%	5%	8%	2%	5%	9%	6%	8%	13%	6%	4%	6.2%
Hispanic													
Male	53	17	17	3	8	1	11	13	26	9	3	15	176
Female	60	14	5	5	2	3	20	19	14	8	9	13	172
Subtotal	113	31	22	8	10	4	31	32	40	17	12	28	348
Percent	7%	3%	2%	8%	4%	2%	5%	6%	5%	9%	3%	5%	4.8%
International Students													
Male	90	180	208	12	53	8	18	156	105	5	75	42	952
Female	55	118	91	6	37	10	63	96	89	6	74	60	705
Subtotal	145	298	299	18	90	18	81	252	194	11	149	102	1,657
Percent	8%	30%	33%	18%	38%	10%	13%	44%	25%	6%	33%	20%	22.9%
Native American													
Male	4	-	-	-	1	-	-	3	3	2	-	1	14
Female	9	1	-	-	-	1	1	3	1	3	3	1	23
Subtotal	13	1	-	-	1	1	1	6	4	5	3	2	37
Percent	1%	0%	0%	0%	0%	1%	0%	1%	1%	3%	1%	0%	0.5%
White/Non-Hispanic													
Male	422	235	208	21	45	56	60	99	169	47	55	139	1,556
Female	381	163	104	12	28	58	223	65	139	42	95	145	1,455
Subtotal	803	398	312	33	73	114	283	164	308	89	150	284	3,011
Percent	47%	41%	34%	33%	31%	66%	47%	28%	40%	45%	33%	55%	41.6%
Unknown/Other													
Male	119	65	93	-	10	5	24	28	60	2	28	10	444
Female	139	64	37	2	12	9	74	20	41	-	39	4	441
Subtotal	258	129	130	2	22	14	98	48	101	2	67	14	885
Percent	15%	13%	14%	2%	9%	8%	16%	8%	13%	1%	15%	3%	12.2%
TOTAL	1,723	982	912	99	236	173	607	577	766	196	454	514	7,239

Percentage of Degrees Conferred to Minority and International Students



(1) Not adjusted for joint degree students.
SOURCE: REGISTRAR OFFICES

Degrees Conferred: Academic Year 2003-2008 ⁽¹⁾

	Academic Year	2003	2004	2005	2006	2007	2008
College	A.B.	1,686	1,658	1,672	1,629	1,671	1,710
	S.B.	5	13	17	11	25	13
	Subtotal	1,691	1,671	1,689	1,640	1,696	1,723
GSAS	A.M.	363	349	331	402	342	380
	M.E.	1	1	-	-	-	1
	M.F.S.	-	-	-	4	1	-
	S.M.	58	60	66	56	59	67
	Ph.D.	392	444	413	473	541	534
	Subtotal	814	854	810	935	943	982
Business	M.B.A.	887	894	884	903	901	907
	D.B.A.	3	4	6	3	5	5
	Subtotal	890	898	890	906	906	912
Dental	D.M.D.	36	33	34	32	30	40
	M.M.Sc.	15	12	12	9	13	14
	D.M.S.	3	3	11	4	8	5
	Cert.	20	19	12	36	20	40
	Subtotal	74	67	69	81	71	99
Design	M. Arch.	91	95	87	81	100	116
	M.A.U.D., M.L.A.U.D.	25	20	28	23	24	21
	M.Des.	51	67	55	45	11	33
	M.L.A.	27	29	47	25	37	25
	M.U.P.	15	17	32	21	24	29
	D.Des.	8	8	7	12	9	12
	Subtotal	217	236	256	207	205	236
Divinity	M.Div.	50	44	58	42	47	43
	M.T.S.	83	102	94	97	96	116
	Th.M.	7	5	4	9	4	3
	Th.D.	3	6	10	9	1	11
	Subtotal	143	157	166	157	148	173
Education	Ed.M.	589	617	643	580	591	552
	Ed.D.	59	60	53	70	53	40
	C.A.S.	4	4	3	11	19	15
	Subtotal	652	681	699	661	663	607
Government	M.P.A. (1 Year)	209	225	208	172	207	184
	M.P.A. (2 Year)	86	89	90	103	102	92
	M.P.A.I.D.	77	63	64	63	71	83
	M.P.P.	163	138	194	175	205	214
	M.U.P.	7	10	6	5	7	4
	Subtotal	542	525	562	518	592	577
Law	J.D.	575	551	547	582	574	588
	LL.M.	130	157	161	159	154	168
	S.J.D.	14	8	3	7	14	10
	Subtotal	719	716	711	748	742	766
Medicine	M.D.	165	177	147	152	189	174
	M.M.Sc.	24	24	26	22	23	22
	Subtotal	189	201	173	174	212	196
Public Health	M.P.H.	211	209	213	214	220	262
	M.S., M.O.H.	152	137	162	164	125	143
	D.P.H., D.S.	65	39	54	49	52	49
	Subtotal	428	385	429	427	397	454
Extension	A.A.	20	13	20	15	9	7
	A.L.B.	113	120	118	108	106	111
	A.L.M.	82	91	112	140	189	311
	Grad. Cert.	245	233	184	202	113	85
	Subtotal	460	457	434	465	417	514
	TOTAL	6,819	6,848	6,888	6,919	6,992	7,239

(1) Not adjusted for joint degree students.

SOURCE: REGISTRAR OFFICES

International Enrollment: Fall 2008 ⁽¹⁾

	Africa	Asia	Europe	Latin America	Middle East	North America	Oceania	Stateless	Total
College	52	164	203	25	36	143	17	1	641
GSAS	18	563	430	62	96	155	29	-	1,353
Business	20	162	197	63	39	88	12	-	581
Dental	-	15	3	2	9	16	-	-	45
Design	1	115	38	7	12	20	-	-	193
Divinity	4	19	6	-	-	9	-	-	38
Education	2	63	16	9	2	12	5	-	109
Government	33	157	89	47	31	33	13	1	404
Law	18	75	72	30	23	65	14	-	297
Medical	4	14	11	4	1	21	4	1	60
Public Health	25	125	21	12	14	37	4	1	239
Extension	1	14	9	9	4	7	-	-	44
TOTAL	178	1,486	1,095	270	267	606	98	4	4,004

(1) Counts include full-time degree and non-degree students only, which include transfer and special students, visiting undergraduates, and Extension School enrollees. Counts exclude students whose affiliation is listed as other, executive education and professional development programs.
SOURCE: INTERNATIONAL OFFICE

Historical Enrollment of International Students: Fall 2003 - 2008⁽¹⁾

	Fall					
	2003	2004	2005	2006	2007	2008
Africa						
Ghana	19	17	17	25	24	25
Kenya	22	23	18	21	17	20
Nigeria	24	20	25	22	27	35
South Africa	23	23	22	22	21	23
Zimbabwe	18	13	16	13	10	15
Other	48	52	64	60	78	60
Subtotal	154	148	162	163	177	178
Asia						
China	354	361	378	403	400	421
India	133	167	189	193	216	225
Japan	127	137	135	130	127	107
South Korea	191	218	244	269	297	305
Taiwan	82	103	113	113	117	100
Other	279	281	298	313	307	328
Subtotal	1,166	1,267	1,357	1,421	1,464	1,486
Europe						
France	78	68	76	82	81	84
Germany	132	137	159	149	158	159
Greece	43	52	49	49	56	46
Italy	54	46	53	53	67	64
Spain	53	51	44	52	52	66
United Kingdom	180	191	177	194	201	209
Other	472	473	464	473	465	467
Subtotal	1,012	1,018	1,022	1,052	1,080	1,095
Latin America						
Argentina	55	48	35	44	42	32
Brazil	63	63	64	61	71	72
Chile	26	33	32	33	32	27
Colombia	31	43	40	50	35	41
Peru	20	22	20	28	24	16
Other	65	60	58	72	73	82
Subtotal	260	269	249	288	277	270
Middle East						
Iran	5	9	8	13	11	15
Israel	71	76	71	81	77	86
Lebanon	12	15	13	16	22	21
Saudi Arabia	9	10	10	10	10	14
Turkey	71	74	71	80	90	96
Other	36	37	42	37	41	35
Subtotal	204	221	215	237	251	267
North America						
Canada	444	467	481	471	489	530
Mexico	71	74	78	98	83	76
Subtotal	515	541	559	569	572	606
Oceania						
Australia	70	67	82	68	67	78
New Zealand	21	15	20	21	24	19
Other	-	-	1	-	-	1
Subtotal	91	82	103	89	91	98
Stateless	-	-	2	2	1	4
TOTAL	3,402	3,546	3,669	3,821	3,913	4,004

Africa Other: Botswana, Cameroon, Camoros, Côte d'Ivoire, Egypt, Ethiopia, Guinea-Bissau, Lesotho, Liberia, Madagascar, Malawi, Mauritius, Morocco, Rwanda, Senegal, Sierra Leone, Sudan, Swaziland, Tanzania, Tunisia, Uganda, Zambia.

Asia Other: Afghanistan, Bangladesh, Brunei, Burma (Myanmar), Cambodia, Hong Kong, Indonesia, Kazakhstan, Kyrgyzstan, Malaysia, Mongolia, Nepal, Pakistan, Philippines, Singapore, Sri Lanka, Tajikistan, Thailand, Uzbekistan, Vietnam.

Europe Other: Albania, Armenia, Austria, Azerbaijan, Belarus, Belgium, Bosnia and Herzegovina, Bulgaria, Croatia, Czech Republic, Denmark, Estonia, Finland, Georgia, Hungary, Iceland, Ireland, Latvia, Liechtenstein, Lithuania, Luxembourg, Macedonia, Moldova, Montenegro, Netherlands, Norway, Poland, Portugal, Romania, Russia, Serbia, Slovakia, Slovenia, Sweden, Switzerland, Ukraine.

Latin America Other: The Bahamas, Barbados, Bermuda, Bolivia, Costa Rica, Cuba, Dominica, Dominican Republic, Ecuador, El Salvador, Guatemala, Haiti, Honduras, Jamaica, Nicaragua, Panama, Paraguay, Trinidad and Tobago, Uruguay, Venezuela.

Middle East Other: Bahrain, Cyprus, Iraq, Jordan, Kuwait, Syria, United Arab Emirates, West Bank.

Oceania Other: Tonga.

(1) Counts include full-time degree and non-degree students only, which includes transfer and special students, visiting undergraduates, and Extension School enrollees. Counts exclude students whose affiliation is listed as other, executive education and professional development programs. Countries listed are for Fall 2008. Information on countries for enrollments in prior years can be obtained from the International C SOURCE: INTERNATIONAL OFFICE

Summer School Enrollment: Summer 2003 - 2008

Harvard Students by School ⁽¹⁾

	2003	2004	2005	2006	2007	2008
College	348	334	435	497	594	642
GSAS	56	55	76	57	77	61
Education	8	10	10	3	5	6
Extension	307	365	354	339	387	484
Other Harvard Schools	10	21	11	16	14	17
Subtotal	729	785	886	912	1077	1,210

Other Students by Educational Level ⁽²⁾

Secondary School	1,130	1,020	1,156	1,444	1,409	1,650
Graduate	1,748	1,593	1,656	1,831	2,002	2,303
Undergraduate	965	1,122	1,109	1,286	1,362	1,502
Unknown	72	89	71	67	70	72
Subtotal	3,915	3,824	3,992	4,628	4,843	5,527
TOTAL	4,644	4,609	4,878	5,540	5,920	6,737

Non-Degree Headcount: Fall 2003 - 2008 ⁽³⁾

	2003	2004	2005	2006	2007	2008		
						Male	Female	Total
College	-	-	36	-	-	-	-	-
GSAS	197	188	220	184	160	88	79	167
Design	3	2	6	2	3	2	1	3
Divinity	11	16	7	8	14	3	3	6
Education	84	95	89	104	107	18	86	104
Government	9	10	8	11	21	18	15	33
Law	54	40	68	49	48	23	12	35
Medical	-	-	1	-	-	-	-	-
Public Health	-	-	22	5	8	3	1	4
Extension ⁽⁴⁾	4,758	4,470	4,675	5,265	5,300	2,692	3,167	5,859
TOTAL	5,116	4,821	5,132	5,628	5,661	2,847	3,364	6,211

(1) Counts include matriculating Harvard students enrolled in Harvard courses during the summer session.

(2) Beginning with 2004, high school students are counted as undergraduates instead of Secondary School students.

(3) Non-degree enrollments include all students enrolled on October 15 in at least one class that is creditable toward a degree or formal award.

2005 counts include 58 graduate students and 36 College students displaced by Hurricane Katrina.

(4) Counts are for the first semester only. This significantly undercounts yearly enrollment in the Extension School as approximately the same number of new students might be enrolled in the second semester.

SOURCE: HARVARD UNIVERSITY EXTENSION SCHOOL AND REGISTRAR OFFICES

Instructional Faculty Appointments

Snapshot Date: July 1, 2008

Includes both primary and secondary appointments; individuals are counted once in each school in which they hold a teaching appointment

Technical notes on following page

	Head Count			Payroll	Head Count			Payroll	Head Count			Payroll	
	Paid	Non-Paid	Total	FTE	Paid	Non-Paid	Total	FTE	Paid	Non-Paid	Total	FTE	
Arts and Sciences					Engineering					Business			
Professor	444	19	463	443.3	48	2	50	45.2	96	-	96	93.6	
Associate Professor	65	1	66	66.0	9	-	9	9.0	37	-	37	37.0	
Assistant Professor / Convertible Instructor	116	5	121	115.0	9	-	9	9.0	52	-	52	52.0	
Total Ladder Faculty	625	25	650	624.3	66	2	68	63.2	185	-	185	182.6	
Professor of Practice, Non-Ladder	16	-	16	13.0	2	-	2	1.5	16	1	17	15.0	
Clinical Faculty	2	-	2	1.0	-	-	-	-	-	-	-	-	
Other Instructional Faculty	255	83	338	206.0	6	3	9	4.0	24	6	30	19.9	
Visiting and Adjunct Instructional Faculty	32	5	37	30.8	1	-	1	0.5	3	5	8	3.0	
Total Instructional Faculty	930	113	1,043	875.1	75	5	80	69.2	228	12	240	220.5	

Design				Divinity				Education				
Professor (includes Prof of Practice for Design)	26	2	28	23.5	20	2	22	19.5	26	-	26	24.3
Associate Professor	14	-	14	11.9	2	-	2	2.0	9	-	9	9.3
Assistant Professor / Convertible Instructor	10	-	10	10.0	4	-	4	4.5	11	-	11	13.0
Total Ladder Faculty	50	2	52	45.4	26	2	28	26.0	46	-	46	46.6
Professor of Practice, Non-Ladder	-	-	-	-	5	-	5	4.3	5	-	5	4.6
Clinical Faculty	-	-	-	-	-	-	-	-	-	-	-	-
Other Instructional Faculty	16	17	33	9.7	3	6	9	3.8	28	50	78	26.2
Visiting and Adjunct Instructional Faculty	10	2	12	6.2	13	3	16	10.3	3	18	21	9.5
Total Instructional Faculty	76	21	97	61.3	47	11	58	44.4	82	68	150	86.9

Government				Law				Public Health				
Professor	47	5	52	43.9	80	1	81	77.9	65	12	77	60.3
Associate Professor	13	-	13	13.0	-	-	-	-	24	8	32	23.7
Assistant Professor / Convertible Instructor	8	1	9	7.5	10	-	10	10.0	30	7	37	28.3
Total Ladder Faculty	68	6	74	64.4	90	1	91	87.9	119	27	146	112.3
Professor of Practice, Non-Ladder	8	-	8	7.2	1	-	1	1.0	-	-	-	-
Clinical Faculty	-	-	-	-	9	-	9	9.0	-	-	-	-
Other Instructional Faculty	38	23	61	41.2	15	25	40	11.4	61	194	255	45.7
Visiting and Adjunct Instructional Faculty	20	28	48	15.8	3	27	30	12.6	14	91	105	5.7
Total Instructional Faculty	134	57	191	128.6	118	53	171	121.9	194	312	506	163.7

Medical (HMS-based)				Dental (HSDM-based)				University Total (excl. affiliates)				
Professor	91	21	112	89.6	7	-	7	7.0	952	69	1,021	932.6
Associate Professor	22	4	26	21.8	5	1	6	5.0	200	14	214	198.7
Assistant Professor / Convertible Instructor	35	3	38	34.3	9	1	10	9.0	294	17	311	292.6
Total Ladder Faculty	148	28	176	145.7	21	2	23	21.0	1,446	100	1,546	1,423.9
Professor of Practice, Non-Ladder	-	-	-	-	-	-	-	-	53	1	54	46.6
Clinical Faculty	-	3	3	-	9	153	162	3.2	20	156	176	13.2
Other Instructional Faculty	72	62	134	69.8	26	30	56	24.8	545	504	1,049	464.5
Visiting and Adjunct Instructional Faculty	6	14	20	6.0	-	2	2	-	105	195	300	100.4
Total Instructional Faculty	226	107	333	221.5	56	187	243	49.0	2,169	956	3,125	2,048.6

Unduplicated, Paid Instructional Faculty Count: **2,107**

Medical (Affiliate-based)				Dental (Affiliate-based)			
	Head Count				Head Count		
	Full-time	Part-time	Total		Full-time	Part-time	Total
Professor	719	12	731	7	1	8	
Associate Professor	1,139	5	1,144	11	-	11	
Assistant Professor	1,761	18	1,779	5	-	5	
Instructor	3,812	-	3,812	12	-	12	
Clinical Titles, Ladder	75	-	75	3	-	3	
Total Ladder Faculty	7,506			38			
Clinical Titles, Non-Ladder	5	2,200	2,205	-	37	37	
Other Instructional Faculty, Non-Ladder	327	341	668	-	1	1	
Visiting and Adjunct Instructional Faculty	59	1	60	1	-	1	
TOTAL FACULTY	7,897	2,577	10,474	39	39	78	

Notes on Medical Affiliates:

- Affiliated institutions are excluded from the University total shown above.
- Only full-time faculty are considered ladder.
- Instructors are considered ladder in the affiliates.
- "Clinical Ladder" includes the following job descriptions: Professor, Clinical; Associate Professor, Clinical; Assistant Professor, Clinical; Instructor, Clinical.
- The following page includes a list of the affiliated medical institutions.

Instructional Faculty Appointments - Technical Notes

- Unduplicated instructional faculty count is limited to paid, primary appointments. It excludes administrative staff who may have a secondary teaching appointment. This University-wide faculty count is the most appropriate count for general reporting purposes.
- This year's faculty counts are based entirely on a query of the Harvard Data Warehouse (HR data loaded nightly from PeopleSoft). Because of technical limitations, prior versions of the Fact Book's faculty counts were based on a combination of PeopleSoft data and data collected directly from various offices across the University. As a result, inclusion criteria tended to be somewhat inconsistent across Harvard's faculties. Since the criteria have been standardized for this year's Fact Book, counts for certain faculties may not be directly comparable to those of previous year's. The paid vs non-paid distinction is based on PeopleSoft coding.
- University Professors are included in the totals of the Schools in which they were originally appointed:
 - Arts & Sciences (16)
 - Business (two)
 - Government (one)
 - Law (two).
- Ladder counts include a small number of non-tenured Professors.
- Counts exclude emeritus faculty.
- Professors of Practice are included in the Professor total for the Design School, but in the non-ladder totals for all other Schools. Adjunct Associate Professors and Adjunct Assistant Professors at the Design School are counted as tenure track faculty in this exhibit.
- Assistant Professor counts include Convertible Instructors, Benjamin Pierce Assistant Professors and Convertible Instructors are counted under "Other Instructional Faculty."
- University Total includes a small number of faculty in the Radcliffe Institute for Advanced Study, University Health Services and Memorial Church.
- At the medical affiliates, only full-time faculty are considered to be ladder faculty. Full-time Instructors are considered tenure-track in the affiliates.
- Business School total for "Other Non-Ladder Instructional Faculty" includes 7 Baker Foundation Professors.
- Public Health total for "Other Non-Ladder Instructional Faculty" includes "secondary" and "term" faculty.
- The HMS-based and HSDM-based counts for Medical School faculty are limited to individuals that are physically located at HMS (as opposed to an affiliated institution) and that have an appointment in one of the basic and social science departments.
- Affiliated Institutions are excluded from the University totals on the previous page and comprise the following:
 - Beth Israel Deaconess Medical Center
 - Brigham and Women's Hospital
 - Cambridge Health Alliance
 - Children's Hospital Boston
 - Dana-Farber Cancer Institute
 - The Forsyth Institute
 - Harvard Pilgrim Health Care
 - Hebrew SeniorLife
 - Joslin Diabetes Center
 - Judge Baker Children's Center
 - McLean Hospital
 - Massachusetts Eye and Ear Infirmary
 - Massachusetts General Hospital
 - Mount Auburn Hospital
 - Schepens Eye Research Institute
 - Spaulding Rehabilitation Hospital
 - VA Boston Healthcare System
- The following HR system (PeopleSoft) job descriptions are included in the instructional faculty counts and are categorized as follows:

Professor

Professor, University
Professor, Chaired
Professor

Associate Professor

Professor, Associate
Professor, Associate Chaired

Assistant Professor

Instructor, Convertible
Professor, Assistant
Professor, Assistant Chaired

Professor of Practice

Professor of Practice
Professor of Practice, Chaired

Clinical Faculty

Professor, Clinical
Professor, Associate Clinical
Professor, Assistant Clinical
Instructor, Clinical (Oth Fac)
Assistant, Clinical

Other Instructional Faculty

Lecturer, Senior
Lecturer (Faculty)
Lecturer
Lecturer, Annual
Instructor
Instructor, Language Drill
Preceptor
Preceptor, Senior (Faculty)
Preceptor (Faculty)
Preceptor (Other Faculty)
Critic
Teaching Associate (Hospitals)
Associate, Principal
Associate, Academic
Member of Faculty
Temporary Academic

Visiting and Adjuncts

Professor, Visiting
Professor, Visiting Assistant
Professor, Visiting Associate
Professor, Associate Adjunct
Professor, Assistant Adjunct
Professor of Practice, Visiting
Professor, Adjunct
Professor, Clinical Adjunct
Professor, Assoc Clinical Adj
Professor, Assist Clinical Adj
Lecturer, Adjunct
Lecturer, Clinical Adjunct
Lecturer, Visiting
Instructor, Clinical Adjunct
Instructor, Adjunct
Visiting - HMS (Other Faculty)

Non-Faculty Staff in the Schools ⁽¹⁾

Counts are Full-Time Equivalent Figures as of October 31, 2008

University-Wide Totals	University Funding			Sponsored Funding			Non-Faculty Academic Staff ⁽²⁾			Grand Total
	Administrative & Professional	Clerical & Technical	Service & Trades	Administrative & Professional	Clerical & Technical	Subtotal	University Funding	Sponsored Funding	Subtotal	
	Faculties	3,737.8	3,165.0	68.9	363.5	478.2	7,813.4	494.9	792.9	
Allieds	310.2	178.5	50.4	4.5	5.9	549.4	28.3	2.5	30.8	580.2
Central Administration ⁽³⁾	694.4	395.6	65.0	1.5	1.0	1,157.6	-	-	-	1,157.6
Service Departments ⁽³⁾	755.4	375.1	870.7	-	-	2,001.2	10.9	-	10.9	2,012.1
Non-Departmental & Special ⁽⁴⁾	42.7	55.8	-	-	-	98.6	-	-	-	98.6
TOTAL	5,540.5	4,170.0	1,055.0	369.5	485.1	11,620.0	534.0	795.4	1,329.4	12,949.5

Faculties	University Funding			Sponsored Funding			Non-Faculty Academic Staff ⁽²⁾			Grand Total
	Administrative & Professional	Clerical & Technical	Service & Trades	Administrative & Professional	Clerical & Technical	Subtotal	University Funding	Sponsored Funding	Subtotal	
	Faculty of Arts and Sciences ⁽⁵⁾	743.1	729.9	-	56.4	88.2	1,617.6	276.3	215.3	
Athletics	117.0	27.7	-	-	-	144.7	19.0	-	19.0	163.7
College Library	254.4	270.4	-	1.0	-	525.7	-	-	-	525.7
Division of Continuing Education	81.7	73.4	-	-	-	155.1	-	-	-	155.1
GSAS	23.8	20.5	-	-	-	44.3	-	-	-	44.3
College Life & Student Dorms	126.5	79.3	-	-	-	205.9	-	-	-	205.9
Museums ⁽⁶⁾	74.8	91.4	-	1.0	6.7	173.9	6.0	14.1	20.1	194.0
Yenching	5.0	2.0	-	-	-	7.0	-	-	-	7.0
Subtotal	1,426.3	1,294.6	-	58.4	94.9	2,874.1	301.3	229.4	530.8	3,404.9
SEAS ⁽⁷⁾	57.2	50.0	10.5	31.1	8.9	157.6	32.2	76.9	109.0	266.7
Business	502.1	279.3	-	-	-	781.4	0.1	-	0.1	781.5
Publishing Division	273.0	8.0	-	-	-	281.0	-	-	-	281.0
Subtotal	775.1	287.3	-	-	-	1,062.4	0.1	-	0.1	1,062.5
Dental	30.1	60.2	-	0.0	4.3	94.6	5.2	13.1	18.3	112.9
Design	51.3	53.4	-	-	-	104.7	0.5	-	0.5	105.2
Divinity	66.3	43.3	-	-	0.2	109.9	0.4	-	0.4	110.3
Education	156.1	124.0	-	21.5	13.4	315.0	5.9	4.0	9.9	324.9
Government	249.3	192.8	-	18.7	14.9	475.8	28.6	14.4	43.0	518.8
Law	250.5	240.5	-	6.8	4.3	502.1	19.4	5.0	24.4	526.5
Medical	431.4	553.6	58.4	80.0	182.8	1,306.3	72.1	370.6	442.7	1,748.9
Public Health	185.6	231.5	-	146.9	154.6	718.6	29.2	79.5	108.7	827.2
Radcliffe Institute for Advanced Study	58.7	33.8	-	-	-	92.4	-	-	-	92.4
Subtotal Faculties	3,737.8	3,165.0	68.9	363.5	478.2	7,813.4	494.9	792.9	1,287.8	9,101.2

(1) Figures do not include temporary employees (except limited regular guards and custodians), LHT's (less-than-half-time), students or teaching fellows. Counts include only filled positions.

(2) Counts include Academic Clinical Fellows, Academic Department/Program Fellows, Coaching Assistants, Internal Post Docs, Teaching Assistants and Visiting Fellows.

(3) Core departments provide central functions of the University (accounts payable, HR benefits, etc.) and are supported through funds from the President, Faculties, and departments. Service departments derive their revenue on a fee-for-service basis from internal customers.

(4) Non-Departmental and Special include Signet Society, Credit Union, Harvard Student Agencies, and LASPAU.

(5) The Faculty of Arts and Sciences includes FTEs for Dumbarton Oaks. In addition Dumbarton Oaks has additional personnel on local data systems who are not reflected in the counts above.

(6) Museums include Harvard University Herbarium, Harvard Museum of Natural History, Museum of Comparative Zoology, Peabody Museum and Semitic Museum.

(7) SEAS refers to the School of Engineering and Applied Sciences.

SOURCE: HUMAN RESOURCE PERSONNEL/PAYROLL DATABASE

Non-Faculty Staff in the Allied Institutions, Central Administration and Service Departments ⁽¹⁾

Counts are Full-Time Equivalent Figures as of October 31, 2008

	University Funding			Sponsored Funding			Non-Faculty Academic Staff ⁽²⁾			Grand Total
	Administrative & Professional	Clerical & Technical	Service & Trades	Administrative & Professional	Clerical & Technical	Subtotal	University Funding	Sponsored Funding	Subtotal	
Allied Institutions										
American Repertory Theatre	44.8	20.2	-	-	-	65.0	-	-	-	65.0
Arnold Arboretum	31.7	23.9	18.0	1.0	-	74.5	7.0	2.0	9.0	83.5
Art Museums	95.3	54.9	32.4	3.0	-	185.5	-	-	-	185.5
Harvard Magazine	16.2	3.8	-	-	-	19.9	-	-	-	19.9
Inter-Faculty Initiatives	25.7	19.1	-	0.3	5.9	50.8	14.3	0.5	14.8	65.6
Institute of Politics	8.5	9.0	-	-	-	17.5	7.0	-	7.0	24.5
Joint Center for Housing Studies	8.9	7.0	-	-	-	15.9	-	-	-	15.9
Memorial Church	5.0	10.6	-	-	-	15.6	-	-	-	15.6
Nieman Foundation	10.8	7.0	-	0.2	-	18.1	-	-	-	18.1
University Press	58.8	23.1	-	-	-	81.9	-	-	-	81.9
Villa I Tatti ⁽³⁾	4.6	-	-	-	-	4.6	-	-	-	4.6
Subtotal	310.2	178.5	50.4	4.5	5.9	549.4	28.3	2.5	30.8	580.2
Central Administration - Core and Service Departments ⁽⁴⁾										
<i>Core departments in bold, service departments in italics</i>										
Allston Development Group	26.6	10.1	-	-	-	36.7	-	-	-	36.7
President & Provost	84.1	43.2	1.0	-	-	128.3	-	-	-	128.3
<i>University Information Services</i>	228.3	89.4	-	-	-	317.6	-	-	-	317.6
<i>University Health Services</i>	152.6	123.4	-	-	-	276.0	10.9	-	10.9	286.9
VP Administration	25.0	12.0	-	-	-	37.0	-	-	-	37.0
<i>Dining Services</i>	78.4	21.0	353.4	-	-	452.8	-	-	-	452.8
<i>Faculty Club</i>	14.0	3.3	42.3	-	-	59.5	-	-	-	59.5
<i>Harvard Real Estate Services</i>	64.4	46.1	-	-	-	110.5	-	-	-	110.5
<i>University Operations Services</i>	140.4	58.0	475.1	-	-	673.4	-	-	-	673.4
VP Development & Alumni Affairs	108.7	81.9	-	-	-	190.6	-	-	-	190.6
<i>Fund Raising Campaigns</i>	77.4	34.0	-	-	-	111.4	-	-	-	111.4
VP Finance	183.5	102.0	-	-	-	285.5	-	-	-	285.5
VP General Counsel	59.4	32.4	64.0	-	-	155.8	-	-	-	155.8
VP Government, Community and Public Affairs	26.1	21.9	-	-	-	47.9	-	-	-	47.9
VP Human Resources	97.8	46.0	-	-	-	143.8	-	-	-	143.8
University Library	83.3	46.2	-	1.5	1.0	132.0	-	-	-	132.0
Subtotal	1,449.8	770.7	935.7	1.5	1.0	3,158.8	10.9	-	10.9	3,169.6
Non-Departmental & Special ⁽⁵⁾	42.7	55.8	-	-	-	98.6	-	-	-	98.6

(1) Figures do not include temporary employees (except limited regular guards and custodians), LHT's (less-than-half-time), students or teaching fellows. Counts include only filled positions.

(2) Counts include Academic Clinical Fellows, Academic Department/Program Fellows, Coaching Assistants, Internal Post Docs, Teaching Assistants and Visiting Fellows.

(3) Additional personnel on local data systems are not included in this count.

(4) Core departments provide central functions of the University (accounts payable, HR benefits etc.) and are supported through funds from the President, Faculties, and departments. Service departments derive their revenue on a fee-for-service basis from internal customers.

(5) Non-Departmental and Special include Signet Society, Credit Union, Harvard Student Agencies, and LASPAU.

SOURCE: HUMAN RESOURCE PERSONNEL/PAYROLL DATABASE

Tuition Charges: FY1989 - FY2009 ⁽¹⁾

Fiscal Year	College	GSAS	Business	Design	Divinity	Education	Government ⁽²⁾	Law	Medical/ Dental ⁽³⁾	Public Health ⁽⁴⁾
1989	12,310	12,310	14,250	12,250	8,100	11,440	11,800	12,307	15,750	11,470
1990	13,085	13,085	15,350	13,110	8,630	12,232	12,570	13,400	16,850	12,515
1991	13,960	13,960	16,400	14,300	9,200	13,152	13,390	14,475	18,030	13,570
1992	14,860	14,860	17,500	15,450	9,940	14,192	14,662	15,560	19,110	14,790
1993	15,870	15,870	18,550	16,650	10,540	15,044	15,690	16,730	20,257	15,675
1994	16,856	16,856	19,750	17,483	11,070	15,796	16,631	17,750	21,260	16,775
1995	17,851	17,851	21,000	18,360	11,630	16,664	17,710	19,080	22,300	17,770
1996	18,838	18,838	22,700	19,276	12,220	17,581	18,650	20,500	23,192	18,840
1997	19,770	19,770	23,840	20,240	12,830	18,460	19,770	21,700	24,150	19,800
1998	20,600	20,600	25,000	21,252	13,480	19,476	20,720	22,800	25,200	20,890
1999	21,342	21,342	26,260	22,208	14,160	20,430	21,656	23,900	26,000	21,895
2000	22,054	22,054	27,250	23,163	14,870	21,410	22,520	25,000	27,000	22,950
2001	22,694	22,694	28,500	24,159	15,620	22,600	23,400	26,000	28,000	23,980
2002	23,457	23,370	30,050	25,195	16,400	23,720	24,320	27,500	29,000	25,050
2003	24,630	24,630	31,800	26,330	17,220	25,144	26,488	29,500	30,500	26,300
2004	26,066	26,066	33,650	27,910	18,080	26,628	28,580	31,250	32,000	27,670
2005	27,448	27,448	35,600	29,500	18,984	28,092	30,272	33,120	34,250	29,300
2006	28,752	28,752	37,500	30,916	19,920	29,360	31,752	35,100	35,800	30,620
2007	30,275	30,275	39,600	32,152	20,712	30,544	33,276	37,100	37,200	31,800
2008	\$31,456	\$31,456	\$41,900	\$33,438	\$21,544	\$31,696	\$34,807	\$39,325	\$38,600	\$34,085
2009	\$32,557	\$32,556	\$43,800	\$34,608	\$22,080	\$32,896	\$36,168	\$41,500	\$39,900	\$35,403

Average Annual Growth Rates

	College	GSAS	Business	Design	Divinity	Education	Government	Law	Medical/ Dental	Public Health
20 YEAR	5.0%	5.0%	5.8%	5.3%	5.1%	5.4%	5.8%	6.3%	4.8%	5.8%
10 YEAR	4.3%	4.3%	5.2%	4.5%	4.5%	4.9%	5.3%	5.7%	4.4%	4.9%
5 YEAR	4.5%	4.5%	5.4%	4.4%	4.1%	4.3%	4.8%	5.8%	4.5%	5.1%
1 YEAR	3.5%	3.5%	4.5%	3.5%	2.5%	3.8%	3.9%	5.5%	3.4%	3.9%

(1) All amounts exclude the University Health Service fee.

(2) For FY03 and FY04, the School of Government implemented two tuition rate increases: one for first-year students (shown above) and one for returning students (FY03 is \$25,440 and FY04 is \$27,704).

(3) Dental School tuition is \$35,790 for FY06 and \$26,050 for FY99.

(4) Beginning in FY08, HSPH implemented different full-time tuition amounts for one-year programs (MPH, MS 1-year) and multiple-year programs (MS 2-year and DS). Amount shown in table is for one-year programs. Amount charged for multiple-year programs was \$32,080 in FY08.

SOURCE: ANNUAL TUITION PROPOSALS APPROVED BY THE CORPORATION.

Comparison of Undergraduate Tuition and Fees at Harvard and Peer Institutions⁽¹⁾

Ranked in descending order for FY2009

Institution	Actual		Change FY2008 - 2009		Notes	
	FY2008	FY2009	Percent	Nominal	FY2008	FY2009
Chicago Total	\$47,007	\$49,329	4.9%	\$2,322		
Tuition	35,673	37,422	4.9%	\$1,749		
Mandatory Fees	195	210	7.7%	\$15	Activity Fee: \$195	Activity Fee: \$210
Room & Board	11,139	11,697	5.0%	\$558		
Columbia Total	\$47,161	\$49,306	4.5%	\$2,145		
Tuition	36,290	38,244	5.4%	\$1,954		
Mandatory Fees	934	1,082	15.8%	\$148	Student Life Fee: \$934	Student Life Fee: 1,082
Room & Board	9,937	9,980	0.4%	\$43		
UPenn Total	\$46,450	\$48,547	4.5%	\$2,097		
Tuition	32,486	34,008	4.7%	\$1,522	General Fee: \$2,932	General Fee: \$3,064
Mandatory Fees	3,756	3,918	4.3%	\$162	Tech Fee: \$582	Tech Fee: \$604
Room & Board	10,208	10,621	4.0%	\$413	Rec Fee: \$242	Rec Fee: \$250
Cornell Total	\$45,971	\$48,144	4.7%	\$2,173		
Tuition	34,600	36,300	4.9%	\$1,700		
Mandatory Fees	181	204	12.7%	\$23	Activity Fee: \$181	Activity Fee: \$204
Room & Board	11,190	11,640	4.0%	\$450		
Brown Total	\$45,948	\$47,740	3.9%	\$1,792		
Tuition	36,196	37,554	3.8%	\$1,358		
Mandatory Fees	146	164	12.3%	\$18	Activity Fee: \$146	Activity Fee: \$164
Room & Board	9,606	10,022	4.3%	\$416		
Dartmouth Total	\$45,483	\$47,694	4.9%	\$2,211		
Tuition	34,965	36,690	4.9%	\$1,725		
Mandatory Fees	213	225	5.6%	\$12	Activity Fee: \$213	Activity Fee: \$225
Room & Board	10,305	10,779	4.6%	\$474		
Stanford Total	\$45,897	\$47,542	3.6%	\$1,645		
Tuition	34,800	36,030	3.5%	\$1,230	Associated Students	Associated Students
Mandatory Fees	289	330	14.2%	\$41	of Stanford Univ. \$289	of Stanford Univ. \$330
Room & Board	10,808	11,182	3.5%	\$374		
MIT Total	\$45,386	\$47,250	4.1%	\$1,864		
Tuition	34,750	36,140	4.0%	\$1,390		
Mandatory Fees	236	250	5.9%	\$14	Activity Fee: \$236	Activity Fee: \$250
Room & Board	10,400	10,860	4.4%	\$460		
Harvard Total	\$45,620	\$47,215	3.5%	\$1,595		
Tuition	32,882	33,983	3.3%	\$1,101	Student Services	Student Services
Mandatory Fees	2,116	2,190	3.5%	\$74	Fee: \$2,116	Fee: \$2,190
Room & Board	10,622	11,042	4.0%	\$420		
Princeton Total ⁽²⁾	\$44,675	\$46,415	3.9%	\$1,740	Res. College Fee: \$595	Res. College Fee: \$620
Tuition	33,000	34,290	3.9%	\$1,290	(Fresh, Soph & some Jr.)	(Fresh, Soph & some Jr.)
Mandatory Fees	695	720	3.6%	\$25	Class Dues: \$40	Class Dues: \$40
Room & Board	10,980	11,405	3.9%	\$425	Activity Fee: \$60	Activity Fee: \$60
Yale Total	\$45,000	\$46,000	2.2%	\$1,000		
Tuition	34,530	35,300	2.2%	\$770		
Room & Board	10,470	10,700	2.2%	\$230		

(1) For comparative purposes, the health services fee is included in the tuition amounts shown for all schools, with the following exception:

Cornell's health fee (\$1,434 in FY08 and \$1,514 in FY09), is optional and excluded.

(2) Princeton does not include its mandatory fees as part of its announced package. The mandatory fees have been included in the FY08 and FY09 totals for consistent comparison.

SOURCE: INTERNAL SURVEY

Undergraduate Tuition Over Time: FY1989 - FY2009

Fiscal Year	Undergraduate Package						Economic Indicators ⁽¹⁾					
	Health Services			Student Services			U.S. CPI-U	Boston CPI-U	GDP IP Deflator (2000=100)	HEPI (1983=100)	Disposable Personal Income	Median Family Income Ages 45-54
	Tuition	Fee	Room	Board	Fee	Total						
1989	12,310	405	2,400	2,145	950	18,210	121.2	127.8	75.7	132.8	15,297	42,192
1990	13,085	460	2,560	2,275	1,015	19,395	127.0	134.3	78.6	140.8	16,257	46,101
1991	13,960	490	2,700	2,425	1,080	20,655	133.9	142.3	81.6	148.1	17,131	47,164
1992	14,860	550	2,900	2,620	1,150	22,080	138.2	146.6	84.4	153.4	17,609	49,606
1993	15,870	584	3,075	2,765	1,220	23,514	142.5	151.1	86.4	157.9	18,494	50,079
1994	16,856	614	3,225	2,910	1,275	24,880	146.2	153.5	88.4	163.3	18,872	52,034
1995	17,851	634	3,370	3,040	1,335	26,230	150.4	156.7	90.3	168.3	19,555	54,379
1996	18,838	634	3,510	3,200	1,393	27,575	154.5	160.6	92.1	173.3	20,287	55,029
1997	19,770	654	3,659	3,336	1,477	28,896	158.9	165.7	93.9	178.6	21,091	57,161
1998	20,600	666	3,808	3,470	1,536	30,080	161.7	169.6	95.4	184.9	21,940	59,959
1999	21,342	686	3,940	3,574	1,590	31,132	164.5	173.2	96.5	189.1	23,161	61,833
2000	22,054	711	4,072	3,685	1,642	32,164	169.3	179.3	97.9	196.9	23,968	65,303
2001	22,694	745	4,190	3,792	1,689	33,110	175.1	187.6	100.0	206.5	25,473	68,082
2002	23,457	816	4,331	3,919	1,746	34,269	178.2	193.3	102.4	212.7	26,243	68,114
2003	24,630	1,020	4,461	4,041	1,798	35,950	182.1	200.0	104.2	223.5	27,183	69,180
2004	26,066	1,142	4,706	4,162	1,852	37,928	186.1	207.0	106.4	231.7	28,076	70,149
2005	27,448	1,264	4,974	4,286	1,908	39,880	191.7	211.8	109.5	240.8	29,592	71,002
2006	28,752	1,370	5,148	4,430	1,975	41,675	199.0	220.1	113.0	253.1	30,611	72,881
2007	30,275	1,390	5,328	4,618	2,044	43,655	204.1	225.0	116.7	260.3	32,263	75,692
2008	31,456	1,426	5,856	4,766	2,116	45,620	211.7	231.0	119.8	273.2	33,706	77,440
2009	\$32,557	\$1,426	\$6,060	\$4,982	\$2,190	\$47,215	216.6	236.0	122.4	280.1	\$34,946	\$79,453

Average Annual Growth Rates

	Undergraduate Package						Economic Indicators ⁽¹⁾					
	Health Services			Student Services			U.S. CPI-U	Boston CPI-U	GDP IP Deflator (1996=100)	HEPI (1983=100)	Disposable Personal Income	Median Family Income Ages 45-54
	Tuition	Fee	Room	Board	Fee	Total						
20 YEAR	5.0%	6.5%	4.7%	4.3%	4.3%	4.9%	2.9%	3.1%	2.4%	3.8%	4.2%	3.2%
10 YEAR	4.3%	7.6%	4.4%	3.4%	3.3%	4.3%	2.8%	3.1%	2.4%	4.0%	4.2%	2.5%
5 YEAR	4.5%	4.5%	5.2%	3.7%	3.4%	4.5%	3.1%	2.7%	2.8%	3.9%	4.5%	2.5%
1 YEAR	3.5%	0.0%	3.5%	4.5%	3.5%	3.5%	2.3%	2.2%	2.2%	2.5%	3.7%	2.6%

(1) Economic indicators are averages of all index figures for a given year. CPI-U, Boston CPI-U and HEPI are based on the fiscal year. All other indices are based on the most recent calendar year.

CY09 MFI is projected at 2.6% over the prior year based on the MFI compounded annual growth rate for the previous ten years.

FY09 HEPI projection is provided by Commonfund Institute. HEPI figures for 2002 and beyond were revised in May of 2009 due to methodology adjustments by Commonfund.

FY09 Boston CPI-U projection is based on CPI-U forecasts plus 5-year average spread between CPI-U and CPI-Boston.

FY09 CPI-U projection is average of forecasts from the Survey of Professional Forecasters (SPF) and the Congressional Budget Office (CBO).

SOURCE: BUREAU OF LABOR STATISTICS, BUREAU OF ECONOMIC ANALYSIS, COMMONFUND INSTITUTE, AND ECONOMIC INDICATORS PUBLICATION.

Degree Student Financial Assistance: FY2008⁽¹⁾

Expressed in thousands of dollars

GRANTS

				Grants as a	
	Institutional	Federal	Other Outside	Total	% of Total School Aid
College	\$100,672	\$7,037	\$11,020	\$118,729	81.4%
GSAS	78,346	18,770	10,702	107,818	73.3%
Business	21,977	35	2,214	24,226	33.2%
Dental	1,136	15	112	1,264	13.5%
Design	6,281	-	568	6,849	41.9%
Divinity	7,685	89	1,191	8,965	67.8%
Education	11,240	223	1,917	13,380	51.8%
Government	13,330	1,197	6,411	20,939	59.2%
Law	14,973	214	2,801	17,988	24.6%
Medical	10,737	2,819	2,844	16,399	52.7%
Public Health	7,512	2,688	3,140	13,339	64.7%
Extension	637	204	149	991	21.0%
TOTAL	\$274,526	\$33,292	\$43,069	\$350,887	58.9%

Grants

Institutional grants are from University unrestricted and restricted monies.

Federal grants include all Federal programs in each school including programs such as the Pell grant, SEOG or graduate training grants.

Outside grants include state and private support of students. In some schools, these numbers may include corporate sponsorship or other sponsored billing.

LOANS

				Loans as a	
	Institutional	Federal	Other Outside	Total	% of Total School Aid
College ⁽²⁾	\$4,970	\$8,155	\$7,383	\$20,507	14.1%
GSAS	-	1,582	374	1,956	1.3%
Business	1,331	24,904	22,608	48,843	66.8%
Dental	332	7,195	538	8,065	86.4%
Design	-	7,805	1,212	9,017	55.2%
Divinity	-	3,441	44	3,485	26.4%
Education	53	10,518	932	11,502	44.5%
Government	144	10,295	2,539	12,979	36.7%
Law	5,017	40,194	9,477	54,687	74.9%
Medical	3,375	10,789	488	14,653	47.1%
Public Health	81	5,438	1,665	7,184	34.8%
Extension	-	3,029	708	3,737	79.0%
TOTAL	\$15,303	\$133,346	\$47,967	\$196,615	33.0%

Loans

Institutional loans are made to students from University capital without Federal guarantee.

Federal loan programs may involve capital from Harvard, or other private or Federal sources, loaned under Federal sponsorship such as Perkins, Direct Loans and FFEL programs.

Outside loans include private capital loaned to students or parents. It excludes personal loans.

EMPLOYMENT

				Employment as a		TOTAL
	Work-Study (CWSP)	Other Term	Total	% of Total School Aid	Grant, Loans & Employment	
College	\$2,704	\$3,922	\$6,626	4.5%	\$145,863	
GSAS	309	36,994	37,303	25.4%	147,077	
Business	-	-	-	0.0%	73,069	
Dental	3	-	3	0.0%	9,332	
Design	399	81	480	2.9%	16,345	
Divinity	772	-	772	5.8%	13,223	
Education	966	-	966	3.7%	25,848	
Government	341	1,117	1,457	4.1%	35,375	
Law	-	371	371	0.5%	73,046	
Medical	85	-	85	0.3%	31,137	
Public Health	95	-	95	0.5%	20,619	
Extension	-	-	-	0.0%	4,728	
TOTAL	\$5,674	\$42,485	\$48,159	8.1%	\$595,661	

Employment

Work-Study is a Federally- sponsored partnership with colleges and universities to provide students with the opportunity to work while in school.

Other term earnings reflect on-campus earnings by students who are not part of the work-study program. Jobs include casual employment (to the extent known), teaching fellowships, research assistantships and resident tutors.

(1) Amounts do not include the Business School, Law School, Medical School or the School of Government funding for graduates in the Low Income Protection Plan/Loan Repayment Assistance Programs.

(2) College total for loans includes \$12,678,306 in PLUS Loans and other Parental Loans.

SOURCE: INTERNAL SURVEY

Federal Sponsored Research: FY2007- FY2008

Expressed in thousands of dollars

	FY2007			FY2008			Change in Total Exp. 2007/2008	FY2008 Eff. Indirect Cost Rate ⁽²⁾
	Direct Costs	Indirect Costs	Total Costs	Direct Costs	Indirect Costs	Total Costs		
ACADEMIC DEPARTMENTS⁽¹⁾								
Faculty of Arts & Sciences	\$61,279	\$25,412	\$86,691	\$61,803	\$26,665	\$88,468	2.1%	43.1%
School of Engineering and Applied Sciences	22,269	10,260	32,529	20,228	9,842	30,070	(7.6%)	48.7%
School of Dental Medicine	4,781	1,839	6,620	4,196	1,614	5,809	(0.12)	38.5%
School of Design	66	12	78	23	4	27	(0.65)	16.3%
Divinity School	13	-	13	-	-	-	(1.00)	-
Graduate School of Education	3,523	872	4,395	2,446	739	3,185	(0.28)	30.2%
JFK School of Government	7,590	1,757	9,347	5,939	1,494	7,433	(0.20)	25.2%
Law School	252	77	329	603	363	966	1.94	60.1%
Medical School	135,495	58,132	193,627	132,806	56,936	189,743	(0.02)	42.9%
School of Public Health	137,101	39,844	176,945	163,349	39,051	202,400	0.14	23.9%
Faculties Subtotal	\$372,369	\$138,205	\$510,574	\$391,393	\$136,709	\$528,102	3.4%	34.9%
Other Academic Departments ⁽³⁾	\$354	\$125	\$478	\$434	\$161	\$595	24.4%	37.1%
Service and Other Departments ⁽⁴⁾	\$178	\$26	\$203	\$2	\$1	\$3	(98.6%)	29.0%
GRAND TOTAL ⁽⁵⁾	\$372,900	\$138,355	\$511,255	\$391,829	\$136,870	\$528,700	3.4%	34.9%

(1) The Business School had zero FY2007 and FY2008 federal sponsored research expenditures and is therefore excluded from the table above.

(2) The effective rate is the indirect costs as a percentage of total direct costs.

(3) Includes Arnold Arboretum, Harvard University Art Museums, and Joint Center for Housing Studies.

(4) Includes Central Administration, University Library and University Health Services.

(5) Totals include both Federal and Federal Once-Removed (Federal Once-Removed total cost for FY2007 is \$59,403 and for FY2008 is \$52,681). Totals exclude financial aid and agency funds.

SOURCE: OFFICE FOR SPONSORED PROGRAMS - ANNUAL REPORT

Federal Research by Agency: FY2007 - FY2008

Expressed in thousands of dollars

	FY2007	FY2008	% Change	FY2008 Total as % of Federal Total
Department of Health & Human Services				
National Institutes of Health	\$344,832	\$351,206	1.8%	66.4%
Other DHHS	66,529	82,578	24.1%	15.6%
Subtotal	\$411,361	\$433,784	5.5%	82.0%
Department of Defense				
Defense Advanced Research Projects Agency ⁽¹⁾	7,178	7,408	3.2%	1.4%
Department of the Army	5,810	6,367	9.6%	1.2%
Department of the Navy	3,436	1,668	(51.5%)	0.3%
Department of the Air Force ⁽²⁾	3,028	4,448	46.9%	0.8%
Subtotal	\$19,451	\$19,891	2.3%	3.8%
National Science Foundation	35,886	36,931	2.9%	7.0%
Department of Energy	12,037	8,513	(29.3%)	1.6%
Nat'l. Aeronautics & Space Administration	10,170	9,934	(2.3%)	1.9%
Agency for International Development	5,963	3,626	(39.2%)	0.7%
Department of Education	4,157	2,503	(39.8%)	0.5%
Environmental Protection Agency	5,011	4,230	(15.6%)	0.8%
Department of State	1,658	2,603	57.0%	0.5%
Department of Commerce	1,258	396	(68.5%)	0.1%
Nat'l. Endowment for the Humanities	420	537	27.9%	0.1%
Department of Veterans Affairs	974	1,113	14.3%	0.2%
Department of Transportation	669	1,090	63.0%	0.2%
Department of Interior	466	610	30.8%	0.1%
Department of Justice	89	454	409.3%	0.1%
Smithsonian Institution	242	217	(10.4%)	0.0%
Department of Housing and Urban Development	136	289	112.0%	0.1%
Department of Agriculture	99	111	11.9%	0.0%
Neighborhood Reinvestment Corporation	362	240	(33.8%)	0.0%
Library of Congress	249	232	(6.6%)	0.0%
Department of the Treasury	14	-	(100.0%)	0.0%
Department of Homeland Security	21	171	718.2%	0.0%
General Services Administration	38	4	(89.4%)	0.0%
Fermi National Accelerator Laboratory	149	78	(47.8%)	0.0%
Medicare Payment Advisory Commission	146	-	(100.0%)	0.0%
Central Intelligence Agency	142	628	342.9%	0.1%
Other Federal Agencies	88	515	485.2%	0.1%
GRAND TOTAL⁽³⁾	\$511,255	\$528,700	3.4%	100.0%

(1) Includes Other - Department of Defense.

(2) Includes Air Force Office of Scientific Research

(3) Totals include both Federal and Federal Once-Removed (Federal Once-Removed total cost for FY2007 is \$59,403 and for FY2008 is \$52,681). Totals exclude financial aid and agency funds.

SOURCE: OFFICE FOR SPONSORED PROGRAMS

Non-Federal Sponsored Research: FY2007 - FY2008

Expressed in thousands of dollars

ACADEMIC DEPARTMENTS	FY2007			FY2008			Change in Total Exp. 2007/2008	FY2008 Eff. Indirect Cost Rate ⁽¹⁾
	Direct Costs	Indirect Costs	Total Costs	Direct Costs	Indirect Costs	Total Costs		
Faculty of Arts & Sciences	\$17,933	\$1,829	\$19,762	\$22,236	\$2,403	\$24,639	24.7%	10.8%
School of Engineering and Applied Sciences	3,389	454	3,843	4,083	820	4,903	27.6%	20.1%
Harvard Business School	-	-	-	4	-	4	-	0.0%
School of Dental Medicine	541	106	647	968	92	1,059	63.7%	9.5%
School of Design	234	29	263	126	12	138	(47.5%)	9.4%
Divinity School	407	63	469	300	29	330	(29.8%)	9.7%
Graduate School of Education	6,597	718	7,314	6,599	793	7,393	1.1%	12.0%
JFK School of Government	15,946	2,144	18,091	15,696	2,148	17,844	(1.4%)	13.7%
Law School	3,197	226	3,423	4,143	270	4,413	28.9%	6.5%
Medical School	28,412	3,560	31,972	33,471	4,359	37,830	18.3%	13.0%
School of Public Health	26,882	3,559	30,440	26,850	3,173	30,023	(1.4%)	11.8%
Radcliffe Institute for Advanced Study	103	1	104	160		160	53.6%	0.0%
Faculties Subtotal	\$103,640	\$12,688	\$116,329	\$114,636	\$14,099	\$128,735	10.7%	12.3%
Other Academic Departments ⁽²⁾	\$1,829	\$137	\$1,966	\$1,948	\$121	\$2,069	5.3%	6.2%
Service and Other Departments ⁽³⁾	\$580	\$3	\$583	\$577	\$0	\$577	(1.1%)	0.0%
GRAND TOTAL ⁽⁴⁾	\$106,049	\$12,829	\$118,878	\$117,161	\$14,221	\$131,381	10.5%	12.1%

(1) The effective rate is the indirect costs as a percentage of total direct costs.

(2) Includes Arnold Arboretum, Harvard University Art Museums, Joint Center for Housing Studies, Nieman Foundation, Villa I Tatti and University Science Initiatives.

(3) Includes Central Administration, Memorial Church, President's Initiatives, University Library, University Health Services, and University Operations Services.

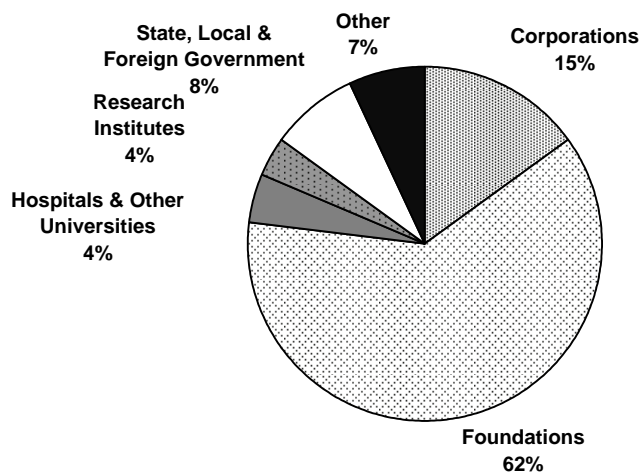
(4) Total excludes financial aid expenditures and agency funds.

SOURCE: OFFICE FOR SPONSORED PROGRAMS - ANNUAL REPORT

Expenditures under Non-Federal Sponsored Research by Sponsor Source: FY2008

Expressed in thousands of dollars

	Corporations	Foundations	Hospitals & Other Universities	Research Institutes	State, Local, & Foreign Government	Other Sources	Total
FAS							
Faculty of Arts & Sciences	2,957.00	\$17,743	\$1,179	\$1,247	\$265	\$1,247	\$24,638
School of Engineering and Applied Sciences	1,952	2,304	272	207	-	168	4,903
FAS Subtotal	\$4,909	\$20,047	\$1,451	\$1,454	\$265	\$1,415	\$29,541
School of Dental Medicine	193	778	11	-	6	71	1,059
School of Design	34	89	-	-	15	-	138
Divinity School	-	260	70	-	-	-	330
Graduate School of Education	140	6,258	-	-	197	798	7,393
JFK School of Government	1,649	8,107	18	823	4,760	2,488	17,845
Law School	-	4,079	-	-	-	334	4,413
Medical School	10,385	19,747	1,852	1,669	2,247	1,930	37,830
School of Public Health	2,476	19,507	2,090	855	3,087	2,008	30,023
Radcliffe Institute for Advanced Study	-	160	-	-	-	-	160
Other Faculties Subtotal	14,877	58,985	4,041	3,347	10,312	7,629	99,191
Other Academic Departments ⁽¹⁾	-	1,843	117	-	8	100	2,068
Service and Other Departments ⁽²⁾	-	581	-	-	-	-	581
GRAND TOTAL ⁽³⁾	\$19,786	\$81,456	\$5,609	\$4,801	\$10,585	\$9,144	\$131,381



(1) Includes Harvard University Art Museums, Joint Center for Housing Studies, Nieman Foundation, University Science Initiatives, and Villa I Tatti.

(2) Includes President's Initiatives, University Library

(3) Total excludes financial aid expenditures and agency funds.

SOURCE: OFFICE FOR SPONSORED PROGRAMS

Historical Funding of Research by Sponsor

Expressed in thousands of dollars

Federal (Prime and Once-Removed)

	Fiscal Year				
	2004	2005	2006	2007	2008
National Institutes of Health	\$343,248	\$354,996	\$362,878	\$344,832	\$351,206
Other DHHS	24,621	46,193	41,560	66,529	82,578
National Science Foundation	37,525	38,157	38,162	35,886	36,931
Department of Defense	18,222	21,911	23,059	19,451	19,891
Department of Energy	12,897	12,901	11,747	12,037	8,513
Nat'l. Aeronautics & Space Administration	10,429	8,367	9,324	10,170	9,934
Agency for International Development	3,684	5,578	7,598	5,963	3,626
Environmental Protection Agency	4,513	5,972	5,983	5,011	4,230
Department of Education	5,393	6,890	6,242	4,157	2,503
Department of State	1,797	1,610	1,796	1,658	2,603
Department of Commerce	1,371	1,674	1,164	1,258	396
Other ⁽¹⁾	4,613	3,617	4,178	4,305	6,289
Federal Total	\$468,312	\$507,865	\$513,692	\$511,255	\$528,700

Non-Federal

	2004	2005	2006	2007	2008
Foundations	\$86,359	\$78,119	\$74,129	\$72,906	\$81,456
State, Local & Foreign Government	10,439	12,797	12,154	13,142	10,585
Corporations	10,084	11,058	9,147	15,588	19,786
Research Institutes	5,415	4,677	6,773	3,825	4,801
Other Sources	7,429	6,763	5,195	8,879	9,144
Hospitals & Other Universities	2,555	2,061	2,868	4,537	5,609
Non-Federal Total	\$122,281	\$115,475	\$110,266	\$118,878	\$131,381
GRAND TOTAL ⁽²⁾	\$590,593	\$623,340	\$623,958	\$630,133	\$660,081

Growth in Sponsored Projects

Expressed in millions of dollars

Fiscal Year	Expenditure Actual \$	% Change	Expressed	
			as FY08 \$	% Change in FY08 \$
2004	590.6	9.6%	671.9	7.2%
2005	623.3	5.5%	688.4	2.5%
2006	624.0	0.1%	663.8	(3.6%)
2007	630.1	1.0%	653.4	(1.6%)
2008	\$660.1	4.8%	\$660.1	1.0%

(1) Agencies listed on this exhibit are based on FY2008 expenditures. Information on agencies in prior years can be obtained from the Office for Sponsored Programs.

(2) Total excludes financial aid expenditures and agency funds.

SOURCE: OFFICE FOR SPONSORED PROGRAMS - ANNUAL REPORT

The Harvard University Library System

The Harvard University Library is the largest academic library in the world. Harvard's extensive collections, which date back to 1638, are invaluable resources for students, faculty, and researchers. Holdings include over 16 million volumes, approximately 8 million photographs, and millions of manuscripts, as well as recordings, maps, ephemera, and an exploding number of digital resources. Most libraries require a Harvard ID for admittance.

The "Harvard Libraries" Web Site

Access library catalogs, e-resources, research tools and guides, library information, and an FAQ for visitors on the "Harvard Libraries" web site: <http://lib.harvard.edu>.

The HOLLIS Discovery System

HOLLIS—the Harvard Online Library Information System—is a simple, intuitive interface for discovering library resources. Located at <http://discovery.lib.harvard.edu>, HOLLIS now reflects a new generation of creative thinking about searching on the web as it differs from searches in traditional library catalogs. A prior version of HOLLIS—"HOLLIS Classic"—remains in place at <http://holliscatalog.harvard.edu>. Both can be accessed from the Harvard Libraries portal at <http://lib.harvard.edu>.

Locating Digital Materials at Harvard

While access to many licensed e-resources, such as journals, requires a Harvard ID and PIN, many other digital objects—photographs, original documents, musical scores, prints, drawings, historical maps, books, legal transcripts, diaries, manuscripts, and more—are open to all Internet users. Here are some places to start:

- **E-Research @ Harvard Libraries** (<http://e-research.lib.harvard.edu>) is the University's online system for searching and finding e-journals and e-resources of many kinds.
- Use the **HOLLIS catalog** (<http://discovery.lib.harvard.edu>) to locate not only digital collections, but some individual digital objects as well. Look for "Internet Links" in HOLLIS records or choose "Digital Resources" when you begin your HOLLIS search.
- **VIA**, Harvard's Visual Information Access catalog (<http://via.harvard.edu>), provides links to nearly 400,000 individual images.

Harvard also provides online access to a growing number of web-accessible, subject-specific collections at <http://digitalcollections.harvard.edu>.

The Harvard University Library System

The many libraries at Harvard form the largest academic library in the world, which is known broadly as the Harvard University library (<http://hul.harvard.edu>). The Harvard University Library (HUL) is also a specific unit of Harvard's Central Administration.

HUL's mission is to collaborate with and coordinate the many independent parts of the Harvard library system to provide users with the best possible collections in all media, to make them as accessible as possible, and to preserve them for the future.

HUL's strategic programs include:

- The **Harvard Depository** for high-density, offsite storage.
- The **Harvard University Archives**, including Records Management Services.
- The **Office for Information Systems**, providing integrated and coherent access to research materials and resources.
- The **Office for Scholarly Communication**, with its new open-access repository, known as DASH.
- The **Open Collections Program**, creating subject-specific, web-accessible collections online.
- The **Weissman Preservation Center**, where the University cares for the Library's greatest treasures.

Summary of Growth and Expenditures of the Harvard University Library, 2007-2008

	Collections			Expenditures (in \$000's)					
	Increase		Volumes & Pamphlets ⁽²⁾	Salaries & Wages	Cost of Retirement and Health Programs ⁽³⁾	Books and Other Library Materials	Binding	Other Library Costs	Total Expenditures
	Gross	Net ⁽¹⁾							
University Library (HUL) ⁽⁴⁾	3,388	3,388	126,411	\$7,353	\$3,112	\$2	\$4	\$9,783	\$20,254
Faculty of Arts & Sciences									
Central Collections	228,816	224,815	10,114,891	32,080	13,409	20,118	603	22,356	88,566
House Libraries	30	30	197,201	109	-	3	-	2	114
Departmental & Divisional Libraries	4,262	4,268	338,716	866	289	2,377	29	99	3,660
Special & Research Libraries	22,942	22,156	1,170,029	3,472	1,253	2,100	82	1,398	8,305
Graduate/Profess. School Libraries	60,109	49,750	4,302,869	18,918	7,330	9,690	393	9,742	46,073
Less Duplication	-	-	-	-	-	-	-	(7,517)	(7,517)
University Library Totals	319,547	304,407	16,250,117	\$62,798	\$25,393	\$34,290	\$1,111	\$35,863	\$159,455

(1) Net increase refers to the increase in volumes after accounting for replacement of previously owned volumes. Revised count of FY07 is 15,945,710.

(2) Volumes and pamphlets for individual libraries include volumes transferred to the Depository. Totals reflect corrections in count.

(3) Increase reflects one-time funding of vacation liability for some libraries.

(4) Expenditures include the Harvard University Archives (which includes records management services), the Office for Information Systems, the Weissman Preservation Center and Special Collections Conservation Lab, the Open Collections Program, the Office for Scholarly Communication, and the Harvard Depository; including the interest and amortization for the Depository.

SOURCE: HARVARD UNIVERSITY LIBRARY

Library Collections: FY2008

	Increase FY2008		Volumes & Pamphlets FY2008 ⁽¹⁾
	Gross	Net	
UNIVERSITY LIBRARY ⁽¹⁾			
Harvard University Archives	3,121	3,121	125,337
Weissman Preservation Center	267	267	1,074
LIBRARIES OF THE FACULTY OF ARTS AND SCIENCES			
<i>HARVARD COLLEGE LIBRARY</i>			
Cabot, Godfrey Lowell, Science Library	3,099	2,411	279,249
Fine Arts Library	12,403	12,337	357,000
Fung Library	1,925	1,898	63,690
Harvard–Yenching Library	32,264	32,264	1,222,387
Houghton Library	3,067	3,067	493,969
Lamont Library	6,075	2,974	189,984
Loeb, Eda Kuhn, Music Library	8,654	8,554	276,617
Quad Library	578	578	26,724
Social Sciences Program	3,081	3,081	357,983
Tozzer Library	4,495	4,476	259,976
Widener, Harry Elkins, Memorial Library	153,175	153,175	6,587,312
<i>HOUSE LIBRARIES ⁽²⁾</i>			
	30	30	197,201
<i>DEPARTMENTAL AND SPECIAL LIBRARIES ⁽³⁾</i>			
	4,262	4,268	338,716
SPECIAL, OFFICE, AND OTHER RESEARCH LIBRARIES			
Biblioteca Berenson	3,183	3,183	153,668
Botany Libraries (six total)	1,164	(425)	290,897
Career Reference Library	154	12	5,123
Development Office Library	7	10	5,352
Dumbarton Oaks Research Library	4,862	4,790	217,126
European Studies, Center for, Library	113	113	13,598
Gibb, Hamilton A. R., Islamic Seminar Library	14	14	7,682
Grossman Library for University Extension	274	65	5,396
Harvard Forest Library	846	846	13,846
Harvard University Property Information Resource Center	2	2	1,217
Hellenic Studies, Center for, Library	1,141	1,141	59,429
Mayr, Ernst, Library of the Museum of Comparative Zoology	2,232	2,232	306,304
Nieman Foundation/Kovach Collection (Journalism)	304	304	4,033
Parry, Milman, Collection of Oral Literature ⁽⁴⁾	0	0	0
Ukrainian Research Institute Reference Library	5	1,505	1,505
Wolbach, John G., Library (Astrophysics)	8,641	8,364	84,853
LIBRARIES OF THE OTHER GRADUATE AND PROFESSIONAL FACULTIES			
Harvard Business School: Baker Library	3,371	3,051	645,839
Harvard Divinity School: Andover– Harvard Theological Library	7,539	7,456	499,497
Harvard Graduate School of Design: Frances Loeb Library	3,817	2,870	298,435
Harvard Graduate School of Education: Monroe C. Gutman Library	5,697	3,324	212,220
Harvard Law School Library	25,294	22,802	1,788,345
John F. Kennedy School of Government Library	2,255	377	58,229
Belfer Center for Science and International Affairs	76	139	5,189
Radcliffe Institute for Advanced Study: Arthur and Elizabeth Schlesinger Library on the History of Women in America	4,610	4,610	93,806
Schools of Medicine, Public Health, and Dental Medicine Francis A. Countway Library of Medicine	7,383	5,138	686,795
Henry Coe Meadow Library (New England Primate Research Center)	67	(17)	14,514
TOTAL UNIVERSITY COLLECTION	319,547	304,407	16,250,117

(1) Omitted from Volume Counts: Office for Information Systems, Open Collections Program, Office for Scholarly Communication, Harvard Depository.

(2) Harvard has 12 residential undergraduate houses: Adams, Cabot, Currier, Dunster, Eliot, Kirkland, Leverett, Lowell, Mather, Pforzheimer, Quincy, Winthrop.

(3) The FAS Departmental libraries include Birkhoff, George David, Mathematical Library; Chemistry and Chemical Biology Library; Child Memorial Library (English Department); Harvard-MIT Data Center; History Departmental Library; History of Science Library; Life Sciences Student Affairs Library; Linguistics Library; McKay, Gordon, Library of Engineering and Applied Sciences and Blue Hill Meteorological Observatory Library; Medieval Studies Library; Near Eastern Languages and Civilizations Library; Paleography Library; Physics Research Library; Psychology Research Library; Raines, Franklin D. and Wendy F., Library in African American Studies; Robbins Library of Philosophy; Robinson, Fred N., Celtic Seminar Library; Sanskrit Library; Smyth, Herbert Weir, Classical Library; Social Relations/Sociology

(4) In lieu of published volumes and pamphlets, the Milman Parry Collection includes manuscripts and recordings of oral literature, including both epic and lyric songs.

SOURCE: HARVARD UNIVERSITY LIBRARY

Physical Plant: FY2008

The University owns and operates more than six hundred buildings of varying sizes and characteristics, spread over a wide geographic area. They encompass approximately 24.5 million gross square feet of space. The physical plant provides living space for students and faculty, research facilities to advance our base of knowledge, classroom and library spaces for the dissemination of knowledge, and space for administrative and support services.

Location ⁽¹⁾	Acres	Gross Square Footage ⁽²⁾ of Buildings (in 000's)	Principal Activity on Site
Cambridge, MA	225	14,756	Main Campus
Boston, MA	21	3,342	Medical & Dental Schools; School of Public Health
Boston (Allston)	360	5,043	Business School; University Publisher; Athletics, Other
Boston (Jamaica Plain)	265	54	Arnold Arboretum
Watertown MA	29	1,160	Arsenal Buildings
Weston, MA	69	11	Case Estates (Arnold Arboretum)
Somerville, MA	2	28	Affiliated Housing
Medford, MA	1		
Bedford, MA	79	11	Concord Field Station
Carlisle, MA	69		Concord Field Station
Concord, MA	605		Field Station (Museum of Comparative Zoology)
Marlborough, MA	43		Animal Research Center (NERPC)
Southborough, MA	87	213	Harvard Depository
Petersham, MA	2704	73	Harvard Forest (Forestry, Botany)
Hamilton, MA	99		Harvard Forest
Phillipston, MA	205		Harvard Forest
Royalston, MA	57		Harvard Forest
Harvard, MA	37	19	Agassiz Cottage (Observatory)
Shrewsbury, MA	6	16	Artemas Ward Homestead (Museum)
Kittery Point & Sutton Island, ME	n/a	6	Howells Memorial & Kendall Houses
Ledyard, CT	n/a	21	Red Top Crew Quarters
Washington, DC	16	208	Dumbarton Oaks & Center for Hellenic Studies
Florence & Fiesole, Italy	n/a	94	Villa I Tatti (Center for Italian Renaissance Studies)
Sardis, Turkey	n/a	6	HUAM Archaeological Site
TOTAL	4,979	25,063	

(1) In addition to locations listed above, Harvard has numerous smaller holdings.

(2) As of FY2007, square footage figures are reported according to National Center for Education Statistics Postsecondary Education Facilities Inventory and Classification Manual (FICM) standards. Therefore, values may differ from previous years.

(3) Previous versions of the Fact Book had list 233 as the total acreage for the Arboretum because of a different interpretation of "ownership." Based on feedback from the Arboretum, this was revised to 265 after publication of the 2007-08 print version of the Fact Book.

SOURCE: HARVARD REAL ESTATE SERVICES

Physical Plant: FY2008

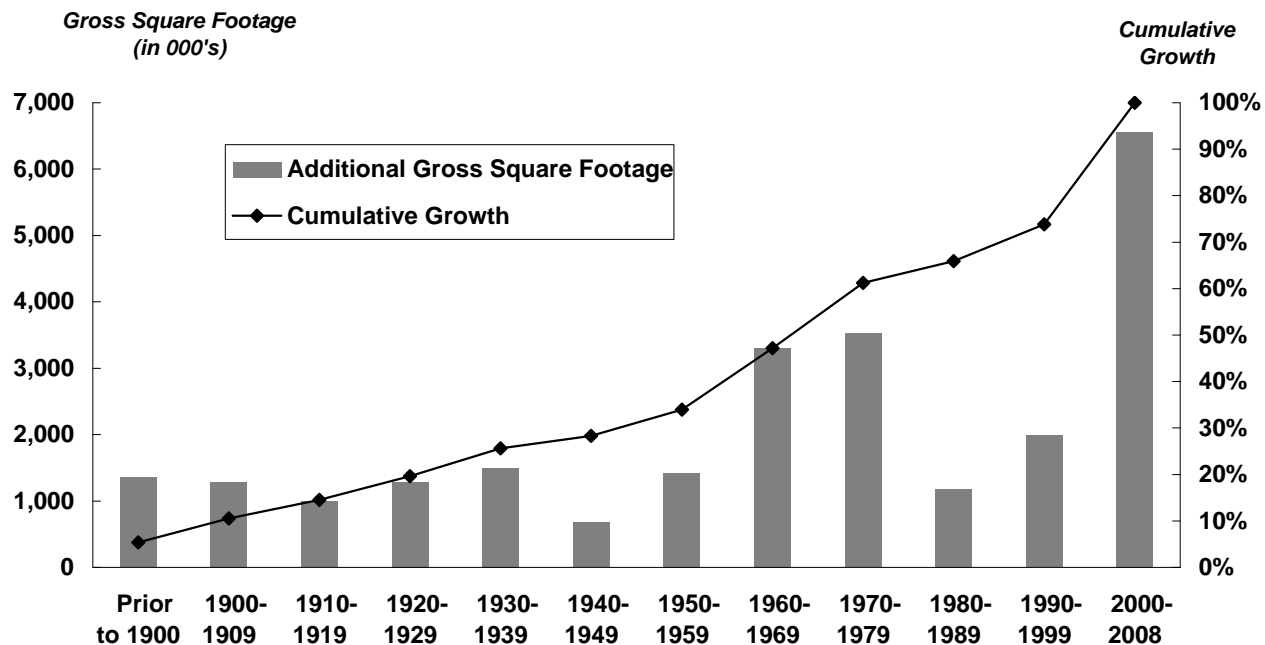
Building Ownership

	Number of Buildings	Gross Square Footage ⁽¹⁾	
		of Buildings (in 000's)	As a % of Total
FAS	259	9,249	36.9%
Engineering	5	337	1.3%
Business	33	1,478	5.9%
Dental	2	101	0.4%
Design	2	180	0.7%
Divinity	7	189	0.8%
Education	6	212	0.8%
Government	6	275	1.1%
Law	20	881	3.5%
Medical	27	2,690	10.7%
Radcliffe	15	294	1.2%
Public Health	7	589	2.4%
Real Estate	207	6,879	27.4%
Central Administration	56	1,709	6.8%
TOTAL	652	25,063	100.0%

Primary Uses

	Gross Square Footage	
	of Buildings (in 000's)	As a % of Total
Residential/Dormitory	7,210	28.8%
Office/Classroom	5,070	20.2%
Lab/Studio	5,268	21.0%
Library	1,538	6.1%
Assembly/Museum	1,136	4.5%
Support	2,094	8.4%
Commercial	1,756	7.0%
Athletic	871	3.5%
Health Care	120	0.5%
TOTAL	25,063	100.0%

Additions to the Physical Plant



(1) As of FY2007, square footage figures are reported according to National Center for Education Statistics Postsecondary Education Facilities Inventory and Classification Manual (FICM) standards. Therefore, values may differ from previous years.

SOURCE: HARVARD REAL ESTATE SERVICES

Summary of Environmental Performance at Harvard

Greenhouse Gas Emissions from Harvard University by Location: FY2008**

	Total Emissions (MTCDE) ⁽¹⁾	MTCDE/ 1000 sq. ft.	% Change Total Emissions (MTCDE) FY06-08
Arts and Sciences	102,956	10.5	1.6%
Business	19,525	12.6	-12.9%
Design	1,794	10.0	-2.9%
Divinity	1,153	6.0	-16.3%
Education	2,111	9.0	6.2%
Government	2,454	9.3	-7.3%
Law	7,720	6.5	-11.7%
Radcliffe	1,978	7.0	5.1%
Public Health	13,626	18.6	-14.2%
Medical School (Including Dental School)	65,471	24.7	0.1%
HRES/UOS/Others ⁽²⁾	66,381	8.2	-2.8%
TOTAL - North America Campus only	285,167	10.7	-2.3%

The 2008 Harvard University Greenhouse Gas Inventory Report represents significant changes in the methodology being followed and the extent of the University represented by the Inventory. As a result, we have restated our 2006 Baseline Year data, as this represents the basis for the University's 30% reduction goal.

This inventory, with the revised baseline, truly represents the full breadth of the University's GHG footprint in North America. The inventory covers more than 26 million square feet of space and reports on all of the critical Kyoto protocol gases from both direct (Scope 1) and indirect (Scope 2) sources.

The data at the left indicates a 2.3% decline in Harvard's overall GHG Emissions since Fiscal Year 2006. Harvard has experienced significant growth in its portfolio over this same period and a 3.6% increase in its energy use.

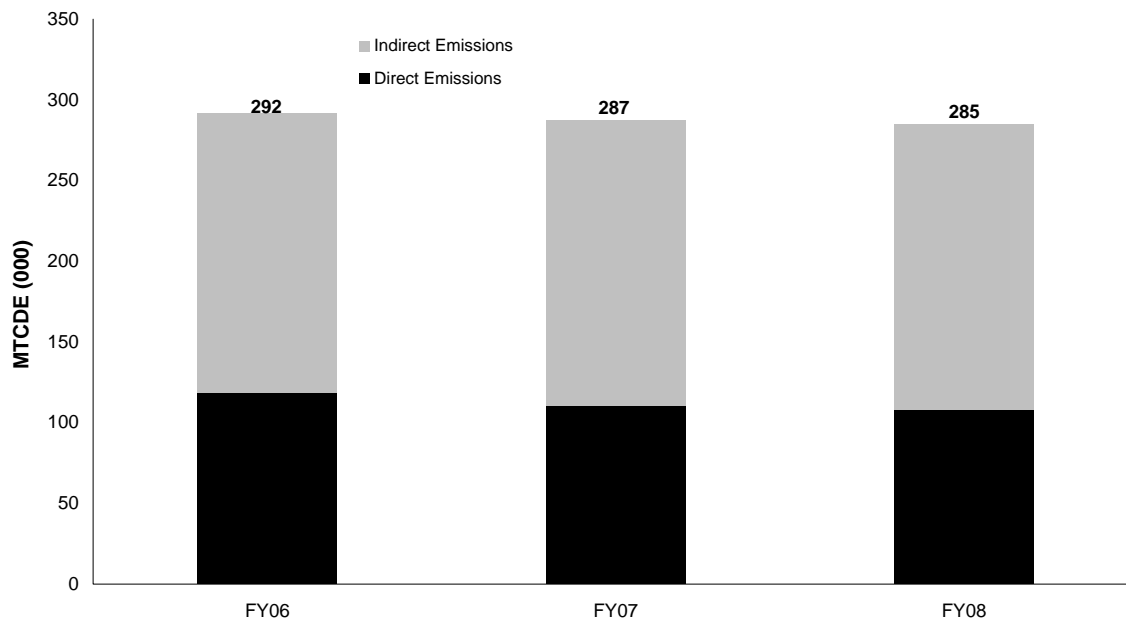
The two types of emissions represented in the graph below are:
Direct Emissions - Sources owned by the institution
Indirect Emissions - Purchased energy (Chilled Water, Steam, and Electricity)

Adjustments to these emissions associated with Harvard's use of biofuels, biomass, Carbon uptake associated with the 3,500 acre Harvard Forest and Renewable Energy Certificates have not been made.

Additional GHG Inventory Reporting information can be found at www.green.harvard.edu/reporting.

Harvard University Greenhouse Gas Emissions: FY2006 - FY2008 ⁽³⁾

Expressed in thousands of MTCDE



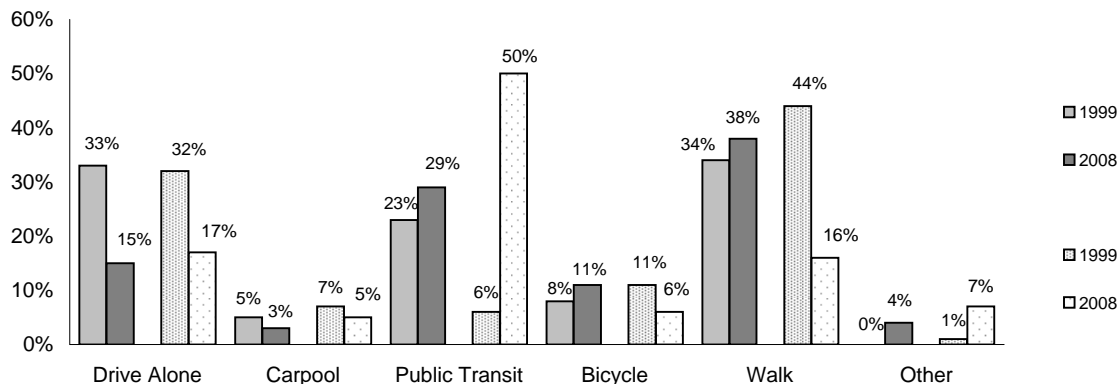
(1) MTCDE: Metric Tons of Carbon Dioxide Equivalent

(2) HRES refers to Harvard Real Estate Services and UOS refers to University Operations Services.

(3) Emission from 2006, 2007 and 2008 have been restated based on the new methodology being followed. All North America Campuses are included.

SOURCE: HARVARD OFFICE FOR SUSTAINABILITY AND ENVIRONMENTAL HEALTH AND SAFETY

Commute Trends: FY1999-FY2008



Cambridge Commute Type data is from UOS, Transportation Services Department.
 Longwood Commute Data is from the Harvard Medical School Parking Office.

Green Campus Loan Fund: FY2003 - FY2008

The Green Campus Loan Fund is a revolving \$12 million fund that provides capital for high performance campus design, operations, maintenance and occupant behavior projects. Project eligibility guidelines state that projects must reduce the University's environmental impacts and meet specific payback requirements. Additional information can be found at green.harvard.edu/loan-fund.

Annual Green Campus Loan Fund Estimated Performance for FY08 Approved Projects

Environmental

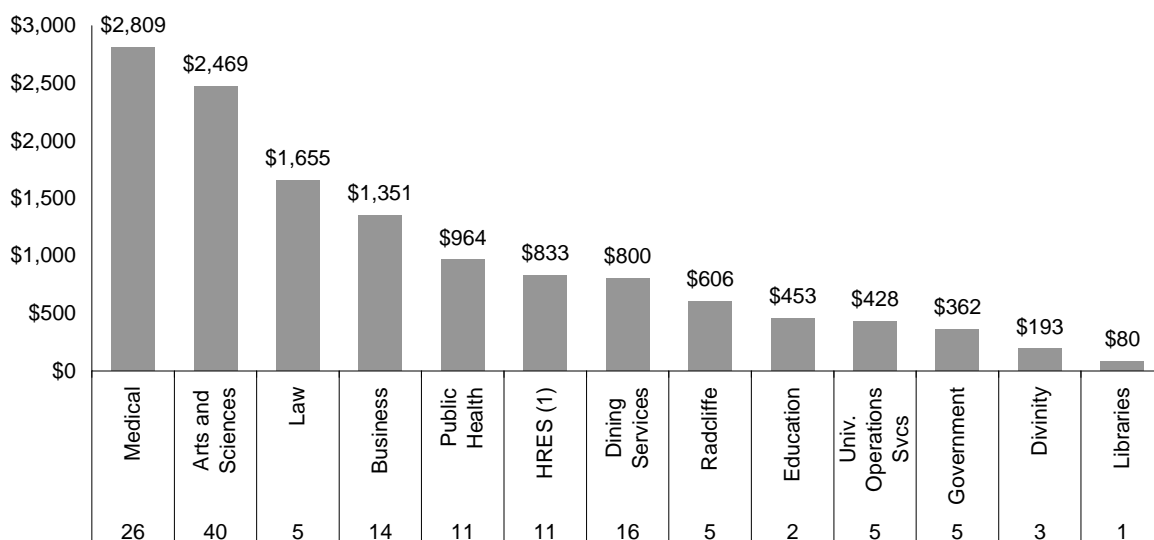
GHG Savings (MTCDE) (FY08)	6,340
Estimated Water Savings (gallons) (FY08)	210,152
Estimated Waste Recycled (lbs) (FY08)	0

Financial

Estimated Annual \$ Savings from FY08 Approved Projects	\$691,154
Estimated Average Return on Investment (ROI) for FY08 Approved Projects	26%
Estimated \$ Amount Promised for FY08 Approved Projects	\$4,204,327

Total Amount Loaned per Faculty: FY2003 - FY2008*

Expressed in thousands of dollars



* Total amount loaned FY2002 - FY2008 is \$14,659,164.

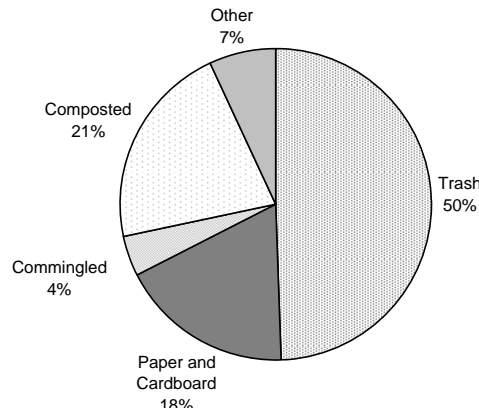
(1) HRES refers to Harvard Real Estate Services.

SOURCE: HARVARD OFFICE FOR SUSTAINABILITY

Waste and Recycling: FY2008

	Recycling Rate	Trash (in tons)	% Change Trash FY07-08
Arts and Sciences	49%	3,583	-26%
Business	52%	516	-11%
Design	66%	77	-27%
Divinity	55%	30	-65%
Education	64%	43	-42%
Government	45%	168	-33%
Law	44%	414	-33%
Radcliffe	53%	103	-35%
Medical	47%	1,158	-10%
Public Health & Dental	50%	334	-18%
HRES ⁽¹⁾	45%	1,243	n/a
Libraries	77%	62	-26%
Museums	40%	73	-35%
Other: UOS, UIS, HU Press	52%	175	80%
TOTAL	50%	7,980	-18%

Harvard University Refuse: FY2008

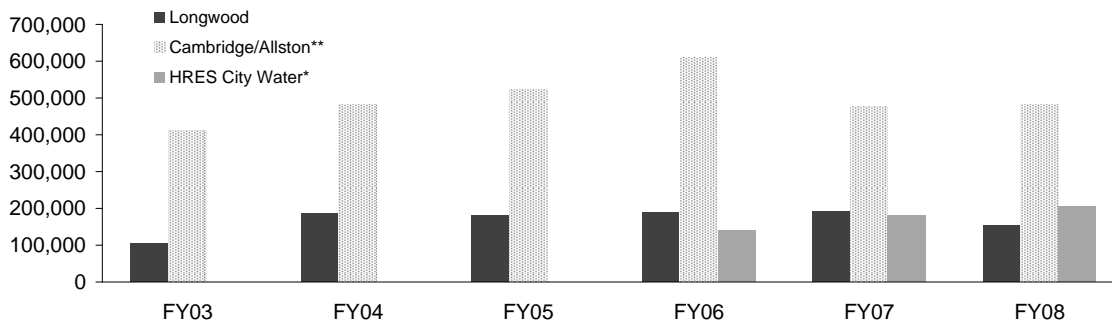


Solid Waste and Recycling data for Cambridge and Allston was reported by UOS, Solid Waste and Recycling Department. Solid Waste and Recycling data for the Longwood campus was reported by the HMS and HSPH Operations Departments.

Water Use in Cubic Feet (CCF): FY2008

		Per 1,000 Sq Ft	% Change FY07-08
Arts and Sciences	242,527	26	-1%
Business	57,876	39	24%
Design	1,574	9	-26%
Divinity	3,505	19	-13%
Education	4,628	22	-5%
Government	7,921	29	-40%
Law	25,212	29	5%
Radcliffe	9,482	34	n/a
Medical	153,317	61	-9%
Dental ⁽³⁾	n/a	n/a	n/a
Public Health ⁽³⁾	n/a	n/a	n/a
HRES	205,812	39	13%
TOTAL	842,151		

Total Water Use at Harvard FY2003-FY2008



Cambridge & Allston data is from the University Operations Services Utility Reports. Harvard Medical School and Dental School data is reported by HMS Facilities Operations. Harvard School of Public Health data is reported by HSPH Facilities Operations.

* HRES city water data is not available prior to FY06.

** FY07 & FY08 Cambridge/Allston Data includes Radcliffe City Water

(1) HRES refers to Harvard Real Estate Services.

(2) UOS refers to University Operations Services.

(3) Dental and Public Health data was not available at the time of publication.

SOURCE: HARVARD OFFICE FOR SUSTAINABILITY AND UNIVERSITY OPERATIONS SERVICES

Leadership in Energy and Environmental Design (LEED) Projects as of FY2008

LEED is a rating system for green buildings and provides a nationally accepted third-party verification that a building project meets the highest performance standards.

LEED Certified: The project has been third-party certified to meet the US Green Building Council LEED Standards.

LEED Registered: The project has registered for LEED Certification, but is not yet verified.

As of June 2008, Harvard has 17 projects certified and 20 projects registered. Visit the OFS website for an up to date list of LEED projects at Harvard: <http://green.harvard.edu/theresource/>.

Registered LEED Projects

Project Name	Building Type	Gross Sq Footage
Arts and Sciences		
High Performance Research	IT	21,609
Littauer Fine Arts Library	Library	25,000
Moorcroft Office (24 Oxford)	Office	5,370
Schreiber Lab	Laboratory	1,700
Zhuang Lab	Laboratory	3,950
Concord Field Station	Labs/Office	3,300
Gordon Track: Lockrm/Off	Lockerrm/Office	3,300
Murr Tennis Center: Lockrm/Off	Lockerrm/Office	1,850
Allston		
First Science Center	Labs/Office	1,000,000
Arnold Arboretum		
Weld Hill	Labs/Office	45,000
Business		
McCulloch Hall	Housing	35,127
Class of '59 Mem Chapel	Chapel	5,900
Divinity		
Rockefeller Hall	Mixed use	26,715
Education		
Larsen Hall	Classroom	1,974
Longfellow Hall	Classroom	12,000
Law		
Northwest Corner	Classrm/Office	525,461
Medical School		
641 Huntington Street	Labs	26,280
Public Health		
22 Plympton Street	Office	2,400
Radcliffe		
Byerly Hall	Office	42,732
HUECU ⁽¹⁾		
Credit Union	Office	6,826

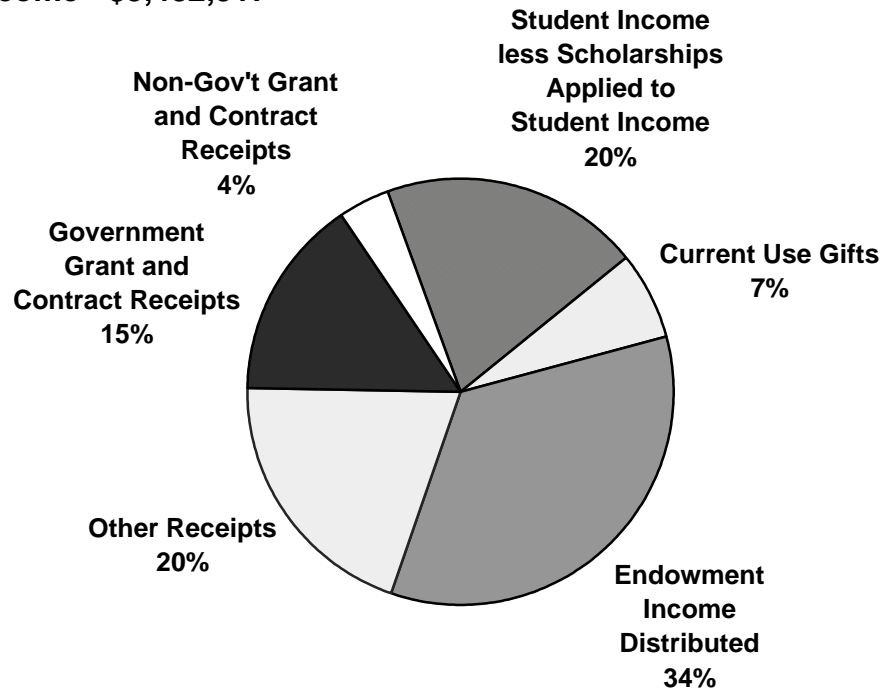
Certified LEED Projects

Project Name	Building Type	Level	Gross Sq Footage
American Repertory Theatre			
Two Arrow Street	Theater/Office	Certified	36,080
Business			
Gallatin Hall	Housing	Gold	100,000
Hamilton Hall	Housing	Gold	48,000
Wyss Hall	Office	Gold	5,000
Aldrich Hall	Classroom	Silver	114,414
McColum Hall	Classroom	Gold	7,940
Dining Services			
Mather Dunster	Kitchen/ Servery	Silver	15,870
Harvard Real Estate Services/University Information Systems			
60 Oxford Street	IT	Certified	93,923
Harvard Real Estate Services			
One Western Avenue	Housing	Silver	229,000
5 Cowperthwaite Street	Housing	Gold	208,343
10 Akron Street	Housing	Gold	180,000
Library			
90 Mount Auburn Street	Library	Gold	30,405
Law			
Griswald	Office	Platinum	1,655
125 Mt. Auburn, 2nd Fl.	Office	Silver	5,620
Public Health			
Landmark Center	Office	Certified	42,000
Radcliffe			
Schlesinger Library	Library	Certified	24,000
University Operations Services			
Blackstone South	Office	Platinum	40,000

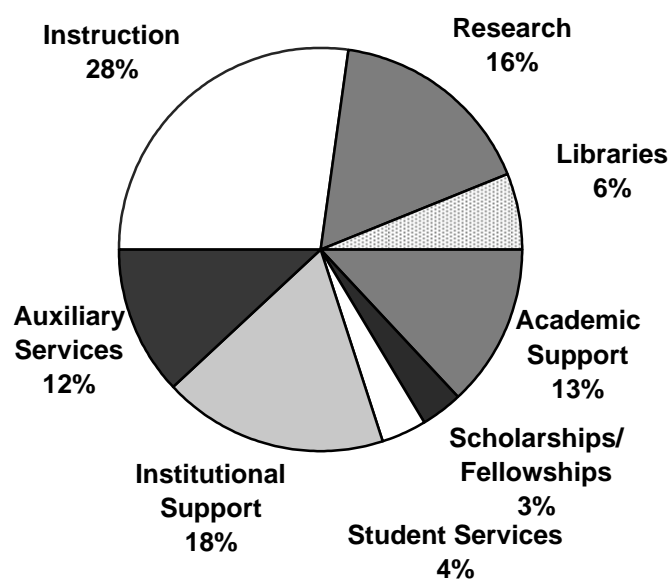
(1) HUECU refers to the Harvard University Employees Credit Union.

Total University Income and Expenses for Fiscal Year Ended June 30, 2008
Expressed in thousands of dollars

Total Income - \$3,482,317



Total Expenses - \$3,464,893



SOURCE: HARVARD UNIVERSITY FINANCIAL REPORT

Departmental Operating Expenses Year Ended June 30, 2008

Expressed in thousands of dollars

	Salaries and Wages	Employee Benefits	Scholarships/ Student Awards
Faculty of Arts & Sciences			
Faculty of Arts & Sciences	\$331,007	\$98,898	\$181,853
Division of Continuing Education	21,999	5,419	7,386
FAS Museums	11,487	4,597	1,606
Total Faculty of Arts & Sciences	\$364,493	\$108,914	\$190,845
School of Engineering & Applied Sciences	\$33,230	\$8,540	\$6,076
School of Business Administration	154,850	44,779	26,050
School of Dental Medicine	12,710	4,128	1,831
Graduate School of Design	15,583	4,646	7,277
Divinity School	13,729	4,466	8,696
Graduate School of Education	32,842	10,481	11,718
School of Government	56,680	19,618	17,070
Law School	64,392	20,557	19,272
Medical School	167,826	54,095	49,195
Radcliffe Institute for Advanced Study	6,401	2,474	3,300
School of Public Health	84,122	27,906	15,923
Other Faculties Subtotal	\$642,365	\$201,690	\$166,408
Total Faculties	\$1,006,858	\$310,604	\$357,253
Arnold Arboretum	5,183	1,998	55
Harvard University Art Museums	12,160	4,894	17
Joint Center for Housing Studies	1,102	497	22
Nieman Foundation	1,173	512	1,731
Villa I Tatti	3,020	1,051	1,272
Other Academic Departments Subtotal	\$22,638	\$8,952	\$3,097
Service Departments	\$123,338	\$49,214	\$925
Memorial Church	\$1,088	\$404	-
Central Administration ⁽²⁾	\$144,682	(\$7,107)	\$1,383
TOTAL UNIVERSITY EXPENSES	\$1,298,604	\$362,067	\$362,658

(1) Includes expense credits and transfers.

(2) Includes Harvard University Library and other University funds.

SOURCE: OFFICE OF THE CONTROLLER

Less: Financial Aid Applied against Income	Equipment and Supplies	Space and Occupancy	Depreciation	Other Expenses ⁽¹⁾	Total Expenses
(\$140,937)	\$58,954	\$160,783	\$90,412	\$154,069	\$935,039
(7,118)	1,764	2,660	819	14,761	47,690
(5)	2,790	3,418	1,072	5,885	30,850
(\$148,060)	\$63,508	\$166,861	\$92,303	\$174,715	\$1,013,579
(\$4,542)	\$5,774	\$7,665	\$6,096	\$11,619	74,458
(21,319)	10,736	30,680	24,105	144,150	414,031
(1,435)	2,830	4,028	1,851	6,927	32,870
(6,156)	1,634	3,445	707	7,887	35,023
(7,298)	1,032	2,572	1,204	4,770	29,171
(8,686)	2,677	6,012	679	16,147	71,870
(10,807)	6,947	12,786	2,676	32,423	137,393
(14,186)	5,940	17,867	6,051	51,483	171,376
(21,457)	43,872	87,745	43,964	165,480	590,720
(10)	724	1,863	1,302	3,593	19,647
(8,118)	26,118	29,330	7,234	126,351	308,866
(\$104,014)	\$108,284	\$203,993	\$95,869	\$570,830	\$1,885,425
(\$252,074)	\$171,792	\$370,854	\$188,172	\$745,545	\$2,899,004
-	498	1,392	273	3,079	12,478
-	6,618	1,205	1,454	5,791	32,139
-	62	169	-	664	2,516
-	134	341	35	1,288	5,214
-	707	946	208	2,276	9,480
-	\$8,019	\$4,053	\$1,970	\$13,098	\$61,827
-	\$49,679	\$5,779	\$43,756	\$47,891	\$320,582
-	\$129	\$741	\$80	\$581	\$3,023
(\$52)	\$5,412	\$29,668	\$12,676	(\$6,205)	\$180,457
(\$252,126)	\$235,031	\$411,095	\$246,654	\$800,910	\$3,464,893

Market Value of Endowment Funds as of June 30, 2008

Expressed in thousands of dollars

Individual Unit Value: \$2,138.98 ⁽¹⁾

	Endowment Market Value ⁽¹⁾	Participating Units	Market Value % of Total
Arts and Sciences ⁽²⁾	\$15,713,641	7,243,580	42.6%
Business	2,962,002	1,304,015	8.0%
Dental	226,028	105,671	0.6%
Design	450,289	208,965	1.2%
Divinity	658,651	306,823	1.8%
Education	568,435	263,365	1.5%
Engineering and Applied Sciences	1,037,997	478,288	2.8%
Government ⁽³⁾	1,141,931	522,282	3.1%
Law	1,904,198	862,688	5.2%
Medical	4,318,780	2,006,570	11.7%
Radcliffe Institute for Advanced Study	628,666	290,797	1.7%
Public Health	1,295,956	583,357	3.5%
President's Initiatives	3,716,368	1,712,957	10.1%
Auxiliary Departments ⁽⁴⁾	386,996	175,518	1.0%
Central Administration	349,186	157,246	0.9%
Other Academic Departments ⁽⁵⁾	1,567,569	698,998	4.2%
Total Endowment	\$36,926,693	16,921,118	100.0%

(1) Market value includes endowment funds that are not unitized. Therefore, unit price times number of units may not equal market value.

(2) Arts and Sciences includes: Continuing Education, College Library, FAS Museums, GSAS, Athletics, College Life and Student Services, and Dumbarton Oaks.

(3) Government includes Institute of Politics.

(4) Auxiliary Departments include: Faculty Club, Health Services, Memorial Church, Operations, Real Estate Services, University Library, and University Press.

(5) Other Academic Departments include: Arnold Arboretum, Charitable Remainder Trust, Harvard University Art Museums, Interfaculty Initiatives, Nieman Foundation, and Villa I Tatti.

NOTE: Starting in FY07, Pledge Balances and Interests in Perpetual Trusts held by Others have been included in school totals. Therefore, line items may not be comparable to prior years.

SOURCE: HARVARD UNIVERSITY FINANCIAL REPORT / INTERNAL REPORTING

Endowment Performance: FY1978 - FY2008

Fiscal Year	Unit Value at End of Year ⁽¹⁾	Market Value at End of Year (in 000's)	Income, Capital Gain and Return as Dollar Value and as Percentage of Beginning Value Per Unit						Actual Distribution Per Unit ⁽³⁾	Distribution Rate ⁽⁴⁾	Aggregate Spending Rate ⁽⁵⁾
			Income		Capital Gain		Total Return ⁽²⁾				
			Dollar	Percentage	Dollar	Percentage	Dollar	Percentage			
1978	\$ 119.09	\$ 1,209,858	\$ 7.12	5.7%	\$ (5.87)	(4.7%)	\$ 1.25	1.0%	\$ 6.32	5.1%	
1979	124.87	1,314,350	8.10	6.8%	5.78	4.9%	13.88	11.7%	6.57	5.5%	
1980	135.10	1,491,059	8.72	7.0%	10.23	8.2%	18.95	15.2%	6.77	5.4%	
1981	140.50	1,622,734	9.52	7.0%	5.40	4.0%	14.92	11.0%	6.97	5.2%	
1982	128.04	1,617,290	12.34	8.8%	(12.46)	(8.9%)	(0.12)	(0.1%)	7.18	5.1%	
1983	171.05	2,307,437	10.83	8.5%	43.01	33.6%	53.84	42.0%	7.40	5.8%	
1984	154.13	2,187,884	10.71	6.3%	(16.92)	(9.9%)	(6.21)	(3.6%)	7.40	4.3%	
1985	182.47	2,694,802	11.52	7.5%	28.34	18.4%	39.86	25.9%	7.58	4.9%	
1986	224.75	3,435,006	12.53	6.9%	42.28	23.2%	54.81	30.0%	7.86	4.3%	
1987	256.78	4,018,269	11.16	5.0%	32.03	14.3%	43.19	19.2%	8.09	3.6%	
1988	260.35	4,155,778	10.41	4.1%	3.57	1.4%	13.98	5.4%	8.49	3.3%	
1989	278.62	4,478,976	13.94	5.4%	18.27	7.0%	32.21	12.4%	10.16	3.9%	
1990	284.66	4,760,284	14.57	5.2%	6.04	2.2%	20.61	7.4%	10.65	3.8%	
1991	274.94	4,708,407	12.75	4.5%	(9.72)	(3.4%)	3.03	1.1%	11.96	4.2%	
1992	295.20	5,118,118	11.87	4.3%	20.26	7.4%	32.13	11.7%	12.44	4.5%	
1993	331.88	5,778,257	11.70	4.0%	36.68	12.4%	48.38	16.4%	14.08	4.8%	
1994	350.93	6,201,220	13.19	4.0%	19.05	5.7%	32.24	9.7%	15.01	4.5%	
1995	396.80	7,045,863	11.90	3.4%	45.87	13.1%	57.77	16.5%	16.07	4.6%	
1996	482.83	9,117,945	15.23	3.8%	86.03	21.7%	101.26	25.5%	17.20	4.3%	
1997 ⁽⁶⁾	589.36	11,161,761	14.60	3.0%	106.53	22.1%	121.13	25.1%	19.84	4.1%	
1998	697.81	13,278,938	10.64	1.8%	108.45	18.4%	119.09	20.2%	21.90	3.7%	
1999	758.75	14,535,675	21.57	3.1%	60.94	8.7%	82.51	11.8%	23.14	3.3%	
2000	985.95	19,148,288	14.42	1.9%	227.20	29.9%	241.62	31.8%	30.15	4.0%	
2001	940.20	18,259,199	19.10	1.9%	(45.75)	(4.6%)	(26.65)	(2.7%)	32.92	3.3%	
2002	914.78	17,518,021	20.63	2.2%	(25.42)	(2.7%)	(4.79)	(0.5%)	45.32	4.8%	
2003	1,013.51	19,294,735	13.88	1.5%	98.73	10.8%	112.61	12.3%	47.11	5.2%	
2004	1,215.68	22,587,305	10.39	1.0%	202.17	19.9%	212.56	21.0%	49.70	4.9%	4.9%
2005	1,425.68	25,853,048	21.16	1.7%	210.00	17.3%	231.16	19.0%	54.17	4.5%	4.5%
2006	1,635.04	29,219,430	27.27	1.9%	209.36	14.7%	236.63	16.6%	60.99	4.3%	4.2%
2007	1,982.64	34,912,100	26.12	1.6%	347.60	21.3%	373.72	22.9%	69.73	4.3%	4.6%
2008	\$ 2,138.98	\$ 36,926,693	\$ 14.64	0.7%	\$ 156.34	7.9%	\$ 170.98	8.6%	\$ 81.96	4.1%	4.8%

Average Annual Growth Rates

30 YEAR	10.1%	12.1%	-	-	-	-	-	-	8.9%	-	-
20 YEAR	11.1%	11.5%	-	-	-	-	-	-	12.0%	-	-
10 YEAR	11.9%	10.8%	-	-	-	-	-	-	14.1%	-	-
5 YEAR	16.1%	13.9%	-	-	-	-	-	-	11.7%	-	-
1 YEAR	7.9%	5.8%	-	-	-	-	-	-	17.5%	-	-

(1) Harvard's endowment comprises approximately 11,100 separate funds. Each fund has been unitized and the separate funds hold "units of the endowment" as their value. Column one shows the value of units as of June 30.

(2) The total return percentage reported by the Harvard Management Company is slightly higher than the one listed above as it is calculated based on reinvestment of all earnings on a monthly basis.

(3) As of July 1, from income earned the previous fiscal year.

(4) This data is based upon the per unit distribution rate established by the Corporation for each fiscal year.

(5) Aggregate spending rate percentage is based upon actual endowment distributions in combination with approved decapitalizations of endowment principal made during the fiscal year.

(6) Net of the \$1.28 per unit fringe supplement, the FY97 payout is \$18.56, and the spending rate is 3.84%.