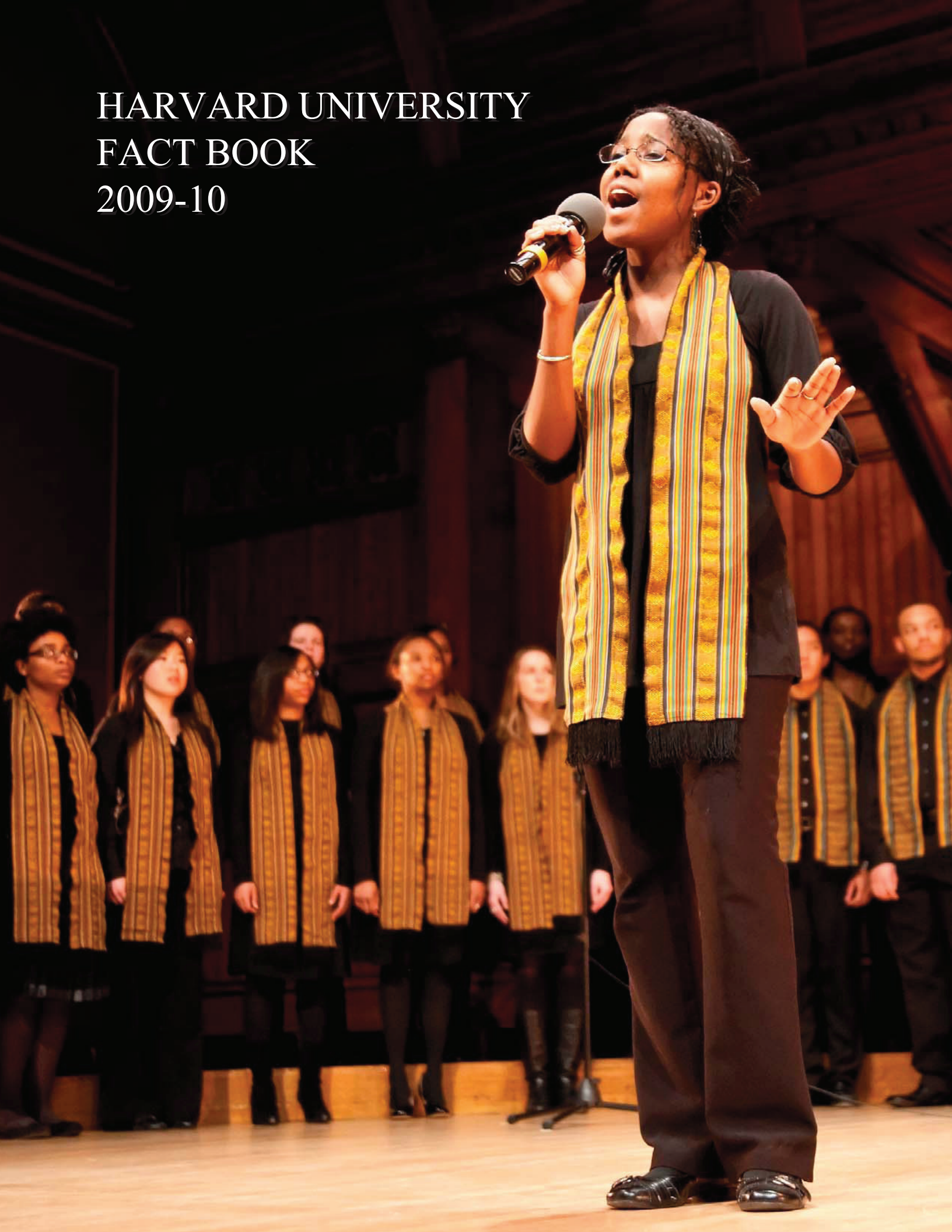


HARVARD UNIVERSITY
FACT BOOK
2009-10



ORGANIZATION	Pages
Central Administration	2
Faculties and Allied Institutions	3
Research and Academic Centers	4 – 5
PEOPLE	Pages
Degree Student Enrollment	6 – 9
Degrees Conferred	10 – 14
International Students	15 – 16
Summer School and Non-Degree Students	17
Faculty	18 – 19
Staff	20 – 21
RESOURCES	Pages
Tuition, Fees, and Financial Aid	23 – 26
Sponsored Programs	27 – 31
Library	32 – 33
Physical Plant	34 – 35
Environmental Performance	36 – 40
FY2009 Income and Expenses	41 – 43
Endowment	44 – 45

The Harvard University Fact Book is published annually by:
The Office of Institutional Research
Holyoke Center, Suite 780
Cambridge, MA 02138

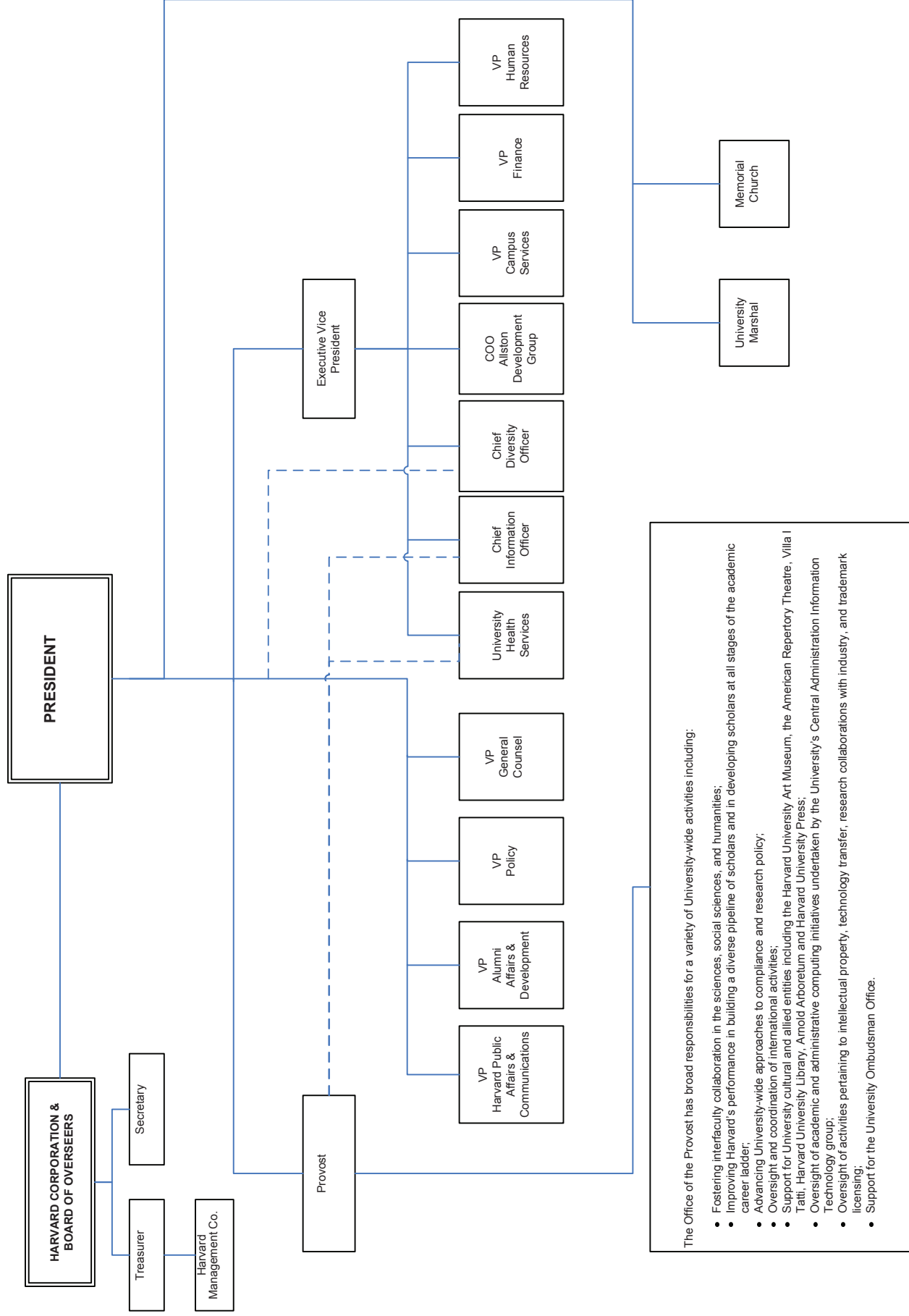
The address for the electronic version is:
http://www.provost.harvard.edu/institutional_research/factbook.php

If you would like more information about data contained in the Fact Book, contact:

John Scanlon, Senior Data and Reporting Analyst
(617) 495-0591, E-mail: john_scanlon@harvard.edu
Darrick Yee, Data and Reporting Analyst
(617) 496-5165, E-mail: darrick_yee@harvard.edu

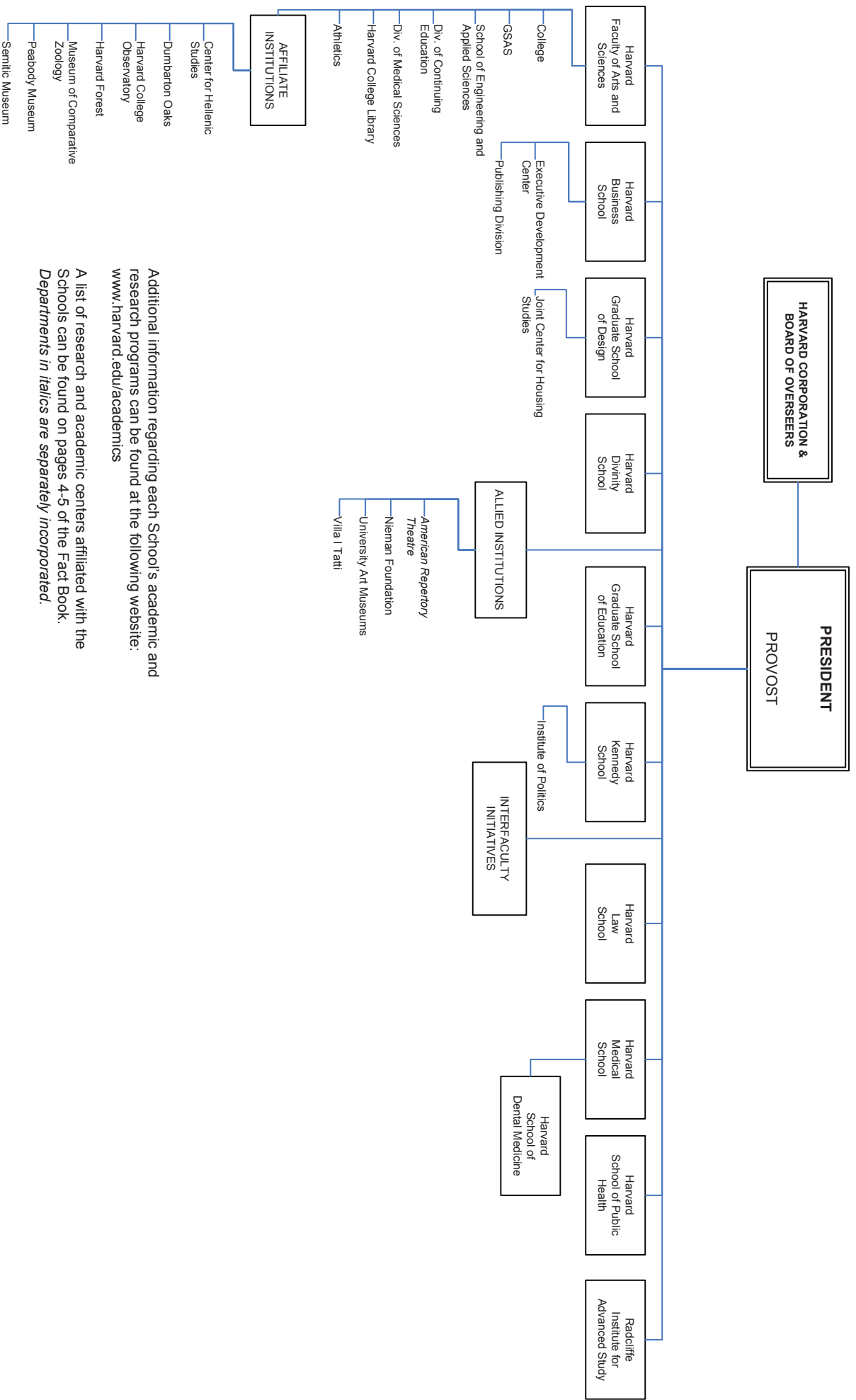
Changes to content after hard copy publication are reflected on the web version of the Fact Book.

Copyright 2010 by the President and Fellows of Harvard College



The Office of the Provost has broad responsibilities for a variety of University-wide activities including:

- Fostering interfaculty collaboration in the sciences, social sciences, and humanities;
- Improving Harvard's performance in building a diverse pipeline of scholars and in developing scholars at all stages of the academic career ladder;
- Advancing University-wide approaches to compliance and research policy;
- Oversight and coordination of international activities;
- Support for University cultural and allied entities including the Harvard University Art Museum, the American Repertory Theatre, Villa I Tatti, Harvard University Library, Arnold Arboretum and Harvard University Press;
- Oversight of academic and administrative computing initiatives undertaken by the University's Central Administration Information Technology group;
- Oversight of activities pertaining to intellectual property, technology transfer, research collaborations with industry, and trademark licensing;
- Support for the University Ombudsman Office.



Additional information regarding each School's academic and research programs can be found at the following website:
www.harvard.edu/academics

A list of research and academic centers affiliated with the Schools can be found on pages 4-5 of the Fact Book. *Departments in italics are separately incorporated.*

Harvard University Research and Academic Centers

FACULTY of ARTS and SCIENCES

Aga Khan Program for Islamic Architecture⁽¹⁾
 Carpenter Center for the Visual Arts
 Center for American Political Studies
 Center for Brain Science*
 Center for Hellenic Studies
 Center for Jewish Studies
 Center for Middle Eastern Studies
 Center for Nanoscale Systems
 Center for Systems Biology
 Davis Center for Russian and Eurasian Studies
 W.E.B. Du Bois Institute for African and African-American
 Research
 Dumbarton Oaks
 Fairbank Center for East Asian Research
 Film Study Center
 Minda de Gunzburg Center for European Studies
 Harvard University Asia Center***
 Harvard College Observatory
 Harvard Forest
 Harvard Smithsonian Center for Astrophysics
 Harvard University Center for the Environment***
 Harvard University Committee on African Studies***
 Harvard-Yenching Institute
 Humanities Center***
 Institute for Quantitative Social Science***
 Center for Geographic Analysis⁽²⁾
 Harvard-MIT Data Center⁽²⁾
 Institute for Theory and Computation
 Korea Institute
 Program for Evolutionary Dynamics
 Edwin O. Reischauer Institute of Japanese Studies
 David Rockefeller Center for Latin American Studies***
 South Asia Initiative at Harvard***
 Prince Alwaleed Bin Talal Islamic Studies Program***
 Ukrainian Research Institute
 Charles Warren Center for Studies in American History
 Weatherhead Center for International Affairs
 Harvard Academy for International and Area Studies⁽³⁾
 Program on U.S. - Japan Relations⁽³⁾

BUSINESS

California Research Center
 C. Roland Christensen Center for Teaching and Learning
 Global Initiative
 Asia-Pacific Research Center
 Europe Research Center
 India Research Center
 Japan Research Center
 Latin America Research Center
 Healthcare Initiative
 Institute for Strategy and Competitiveness*

BUSINESS (cont.)

Leadership Initiative
 Arthur M. Rock Center for Entrepreneurship
 Social Enterprise Initiative

DESIGN

Aga Khan Program at the Graduate School of Design
 Alternative Futures Initiative
 Center for Technology and Environment
 Joint Center for Housing Studies*
 Real Estate Academic Initiative***

DIVINITY

Center for the Study of World Religions
 Women's Studies in Religion Program

EDUCATION

Achievement Gap Initiative*
 Change Leadership Group
 Center for Education Policy Research
 Collaborative on Academic Careers in Higher Education
 Executive Leadership Program for Educators at Harvard
 University (ExEL)*
 Harvard Family Research Project
 Programs in Professional Education/The Principals'
 Center
 Project Zero
 Public Education Leadership Project*
 Three-to-Third
 WIDE World⁽⁴⁾

ENGINEERING AND APPLIED SCIENCES

Center for Research on Computation and Society
 Harvard Institute for Biologically Inspired Engineering
 Institute for Quantum Science and Engineering
 Kavli Institute for Bionano Science and Engineering
 Materials Research Science and Engineering Center
 Nanoscale Science and Engineering Center⁽⁵⁾
 Rowland Institute

GOVERNMENT

Roy and Lila Ash Institute for Democratic Governance
 and Innovation
 Robert and Renee Belfer Center for Science and
 International Affairs
 Carr Center for Human Rights Policy
 Center for International Development **
 Center for Public Leadership
 Harvard Environmental Economics Program**
 Hauser Center for Nonprofit Organizations**
 Institute of Politics
 Joint Center for Housing Studies*

(1) The Aga Khan Program for Islamic Architecture is a joint program with M.I.T.

(2) These Programs are housed and administered within the Institute for Quantitative Social Science

(3) These Programs are housed and administered within the Weatherhead Center.

(4) WIDE is the Wide-scale Interactive Development for Educators.

(5) The Nanoscale Science and Engineering Center is a joint program with M.I.T., U.C.S.B., and the Boston Museum of Science.

* These Programs represent collaborations between two or more Schools.

** These Programs are housed in particular Schools and report to a dean, but have been granted University-Wide Status.

*** These initiatives have a joint reporting structure to the Provost and to the dean of their home School.

SOURCE: SCHOOLS, OFFICE OF THE PROVOST

Harvard University Research and Academic Centers

GOVERNMENT (cont.)

Mossavar-Rahmani Center for Business and Government
 Joan Shorenstein Center on the Press, Politics and Public Policy
 A. Alfred Taubman Center for State and Local Government⁽¹⁾
 Malcolm Wiener Center for Social Policy
 Women and Public Policy Program

MEDICINE

Center for Biomedical Informatics
 Center for Craniofacial Tissue Engineering
 Center for Genetics and Genomics, Harvard Medical School-Partners Healthcare*
 Center for Health and the Global Environment
 Center for Hereditary Deafness*
 Center for Immunodeficiency
 Center for Integration of Medicine and Innovative Technology
 Center for Magnetic Resonance*
 Center for Mental Health and Media*
 Center for Neurofibromatosis and Allied Disorders*
 Center for Palliative Care
 Dana Farber/Harvard Cancer Center*
 Division for Research and Education in Complementary and Integrative Medical Therapies
 Division of AIDS*
 Division of Emergency Medicine
 Division of Health Policy Research and Education*
 Division of Health Sciences and Technology
 Division of Medical Ethics*
 Division of Nutrition*
 Division on Primary Care*
 Division of Service Learning
 Division of Sleep Medicine
 Harvard Catalyst: The Harvard Clinical and Translational Science Center
 Harvard Clinical Research Institute
 Harvard-Mahoney Neuroscience Institute*
 Harvard NeuroDiscovery Center
 Harvard Skin Disease Research Center
 ICCB – Longwood Screening Facility*
 Institute of Proteomics
 JDRF Center for Immunological Tolerance at Harvard⁽²⁾
 New England Primate Research Center
 New England Regional Center of Excellence for Biodefense and Emerging Infectious Diseases*

LAW

Berkman Center for Internet and Society***
 Child Advocacy Program
 East Asian Legal Studies Program
 Environmental Law and Policy Program
 European Law Research Center
 Fund for Tax and Fiscal Policy Research
 Charles Hamilton Houston Institute for Race and Justice
 Human Rights Program

LAW (cont.)

Islamic Legal Studies Program
 Labor and Worklife Program
 Legal History Program
 John M. Olin Center for Law, Economics and Business
 Petrie-Flom Center for Health Law Policy, Biotechnology, and Ethics*
 Program on Corporate Governance
 Program on International Financial Systems
 Program on Negotiation
 Program on the Legal Profession

PUBLIC HEALTH

Francois-Xavier Bagnoud Center for Health and Human Rights***
 Center for Health Communication
 Center for Health Decision Science
 Harvard Center for Population and Development Studies***
 Harvard Injury Control Center
 Harvard School of Public Health AIDS Initiative

RADCLIFFE INSTITUTE FOR ADVANCED STUDY

Radcliffe Institute Fellowship Program
 Arthur and Elizabeth Schlesinger Library on the History of Women in America

UNIVERSITY INTERFACULTY INITIATIVES⁽³⁾

Advanced Leadership Program at Harvard (pilot program)
 Francois-Xavier Bagnoud Center for Health and Human Rights***
 Berkman Center for Internet and Society***
 Center on the Developing Child
 Harvard Center for Population and Development Studies***
 Harvard China Fund
 Harvard Humanitarian Initiative
 Harvard Initiative for Global Health
 Harvard Stem Cell Institute
 Harvard University Asia Center***
 Harvard University Center for the Environment***
 Harvard University Committee on African Studies***
 Harvard University Committee on Human Rights Studies
 Harvard University Native American Program
 Harvard University Program in Ethics and Health Humanities Center***
 Institute for Quantitative Social Science***
 Microbial Sciences Initiative
 Mind/Brain/Behavior Initiative
 Origins of Life Initiative
 Program in Health Policy
 Program on Health Systems Improvement
 Real Estate Academic Initiative***
 David Rockefeller Center for Latin American Studies***
 Edmond J. Safra Foundation Center for Ethics
 South Asia Initiative at Harvard***
 Prince Alwaleed Bin Talal Islamic Studies Program***

(1) The Taubman Center includes the Rappaport Institute for Greater Boston.

(2) JDRF is the Juvenile Diabetes Research Foundation.

(3) These Initiatives report to the Provost.

* These Programs represent collaborations between two or more Schools.

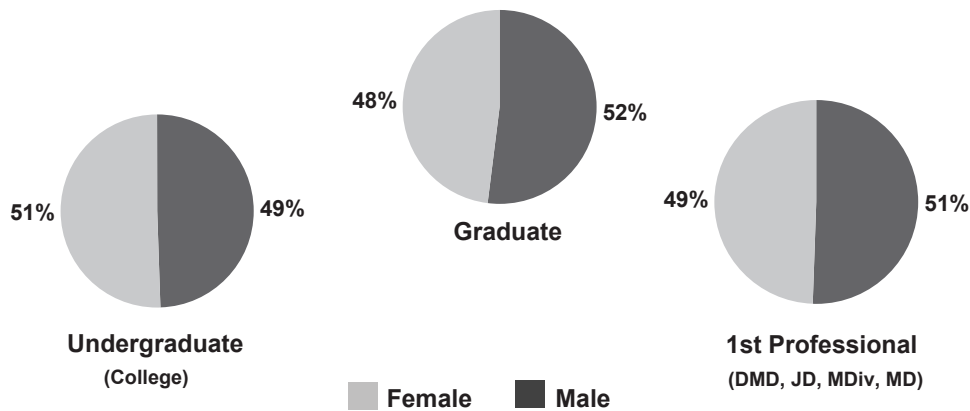
** These Programs are housed in particular Schools and report to a dean, but have been granted University-Wide Status.

*** These initiatives have a joint reporting structure to the Provost and to the dean of their home School.

SOURCE: SCHOOLS, OFFICE OF THE PROVOST

Degree Student Head Count: Fall 2009
 Counts taken as of October 15, 2009

	Male	Female	Total	Full-Time	Part-Time	Total
College ^(1,4)						
Freshmen	835	842	1,677	1,677	-	1,677
Sophomores	828	849	1,677	1,675	2	1,677
Juniors ⁽²⁾	836	834	1,670	1,669	1	1,670
Seniors	783	848	1,631	1,629	2	1,631
Subtotal	3,282	3,373	6,655	6,650	5	6,655
GSAS ^(3,4)						
Division of Med. Sci.	234	306	540	540	-	540
All Other	1,805	1,393	3,198	3,190	8	3,198
Subtotal	2,039	1,699	3,738	3,730	8	3,738
Business	1,202	709	1,911	1,911	-	1,911
Dental	111	134	245	244	1	245
Design	349	313	662	660	2	662
Divinity	176	208	384	374	10	384
Education	275	717	992	893	99	992
Government	567	400	967	903	64	967
Law	1,059	928	1,987	1,987	-	1,987
Medical	388	368	756	756	-	756
Public Health	290	541	831	660	171	831
Extension	1,001	986	1,987	439	1,548	1,987
Undergraduate	257	269	526	219	307	526
Graduate	744	717	1,461	220	1,241	1,461
Subtotal, All Degree Students	10,739	10,376	21,115	19,207	1,908	21,115
Adj. for Joint Degree Students	(71)	(38)	(109)			(109)
TOTAL	10,668	10,338	21,006			21,006



(1) Students in the Advanced Standing Program are counted as Juniors in their second year and Seniors in their third and fourth year. College total excludes students who are studying abroad.

(2) Counts for Juniors include 38 undergraduates unclassified by year.

(3) Candidates for the Ph.D. are enrolled in GSAS but may cross register for courses in other faculties.

(4) GSAS and Harvard College include engineering students.

SOURCE: REGISTRAR OFFICES

Historical Enrollments: Fall 2004 - 2009 ⁽¹⁾**Degree Student Head Count by School**

Counts taken as of October 15, 2009

	2004	2005	2006	2007	2008	2009
College ^(2,4)	6,562	6,613	6,715	6,648	6,678	6,655
GSAS ^(3,4)	3,638	3,753	3,750	3,682	3,720	3,738
Business	1,823	1,851	1,855	1,854	1,852	1,911
Dental	243	240	243	250	210	245
Design	619	579	618	602	610	662
Divinity	428	423	439	453	433	384
Education	1,069	975	971	905	902	992
Government	956	944	1,029	930	940	967
Law	1,921	1,948	1,966	1,966	1,952	1,987
Medical	766	784	818	809	782	756
Public Health	825	787	771	797	834	831
Extension						
Undergraduate	385	389	385	433	478	526
Graduate	592	599	590	700	929	1,461
Subtotal, All Degree Students	19,827	19,885	20,150	20,029	20,320	21,115
Adj. for Joint Degree Students	(58)	(65)	(72)	(74)	(98)	(109)
TOTAL	19,769	19,820	20,078	19,955	20,222	21,006
Enrollment Level ⁽⁵⁾	2004	2005	2006	2007	2008	2009
Undergraduates						
Full-Time	6,722	6,792	6,880	6,837	6,890	6,869
Part-Time	225	210	220	244	266	312
Subtotal	6,947	7,002	7,100	7,081	7,156	7,181
Graduate Students						
Full-Time	9,120	9,112	9,274	9,224	9,223	9,571
Part-Time	1,059	1,026	963	935	1,178	1,592
Subtotal	10,179	10,138	10,237	10,159	10,401	11,163
1st Professional Degree ⁽⁶⁾						
Full-Time	2,680	2,728	2,796	2,782	2,749	2,767
Part-Time	21	17	17	7	14	4
Subtotal	2,701	2,745	2,813	2,789	2,763	2,771
TOTAL	19,827	19,885	20,150	20,029	20,320	21,115

(1) Several Harvard schools enrolled students displaced by Hurricane Katrina during Fall 2005. These students are included in the counts for non-degree students on page 17.

(2) College totals exclude students who were studying abroad at the time data was compiled.

(3) Candidates for the Ph.D. are enrolled in GSAS but may cross register for courses in other faculties.

(4) Counts for GSAS and Harvard College include engineering students.

(5) Includes degree candidates from the Extension School. Not adjusted for joint degree students.

(6) 1st Professional degrees include DMD, JD, MDiv, and MD.

SOURCE: REGISTRAR OFFICES

Student Enrollment by Degree: Fall 2009
 Counts taken as of October 15, 2009

		Male		Female		Total
		Full-Time	Part-Time	Full-Time	Part-Time	
College ^(1,2)	A.B., S.B.	3,279	3	3,371	2	6,655
GSAS ⁽²⁾	A.M., S.M., M.E.	64	7	76	1	148
	Ph.D.	1,968	-	1,622	-	3,590
Business	M.B.A.	1,173	-	688	-	1,861
	D.B.A.	29	-	21	-	50
Dental	D.M.D.	54	-	92	1	147
	M.M.Sc.	23	-	15	-	38
	D.M.Sc.	17	-	8	-	25
	Cert.	17	-	18	-	35
Design	M.Arch.	183	-	154	1	338
	M.A.U.D., M.L.A.U.D.	40	-	19	-	59
	M.Des.	42	1	24	-	67
	M.L.A.	36	-	71	-	107
	M.U.P.	30	-	29	-	59
	D.Des.	17	-	15	-	32
Divinity	M.Div.	61	1	93	2	157
	M.T.S.	82	4	91	2	179
	Th.M.	4	1	2	-	7
	Th.D.	23	-	18	-	41
Education	Ed.M.	150	16	443	60	669
	Ed.D.	97	12	198	11	318
	C.A.S.	-	-	5	-	5
Government	M.P.A. ⁽³⁾	222	24	117	14	377
	M.P.A.I.D.	89	3	51	3	146
	M.P.P.	205	10	190	10	415
	M.U.P.	5	-	8	-	13
	Ph.D.	9	-	7	-	16
Law	J.D.	928	-	834	-	1,762
	LL.M.	91	-	76	-	167
	S.J.D.	40	-	18	-	58
Medical	M.D.	359	-	346	-	705
	M.M.Sc.	29	-	22	-	51
Public Health	M.P.H., M.O.H.	76	39	106	55	276
	M.S.	59	29	158	22	268
	D.P.H.	2	1	7	3	13
	D.S.	78	6	174	16	274
Extension	A.A., A.L.B.	114	143	105	164	526
	A.L.M., Grad. Cert.	112	632	108	609	1,461
	TOTAL ⁽⁴⁾	9,807	932	9,400	976	21,115

(1) College total excludes students who are studying abroad.

(2) Harvard College and GSAS include engineering students.

(3) M.P.A. Program includes the two-year M.P.A. program and the one-year M.P.A. Mid-Career program.

(4) Not adjusted for joint degree students.

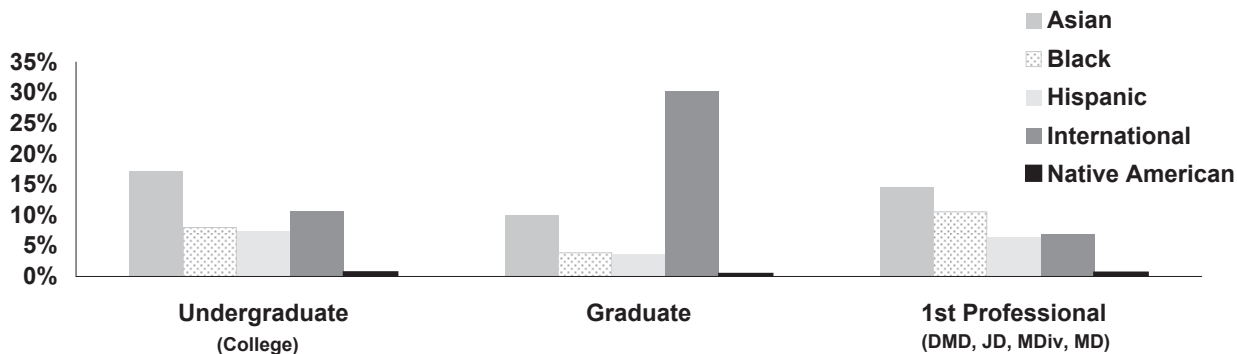
SOURCE: REGISTRAR OFFICES

Degree Student Enrollment by Ethnicity: Fall 2009

Counts taken as of October 15, 2009

	College	GSAS	Business	Dental	Design	Divinity	Education	Government	Law	Medical	Public Health	Extension	Total
Asian/Pacific Islander													
Male	461	154	132	24	37	7	22	30	73	124	24	123	1,211
Female	684	184	97	43	50	13	70	39	84	95	51	104	1,514
Subtotal	1,145	338	229	67	87	20	92	69	157	219	75	227	2,725
Percent	17%	9%	12%	27%	13%	5%	9%	7%	8%	29%	9%	11%	12.9%
Black/Non-Hispanic													
Male	221	35	55	5	8	14	33	19	81	31	12	39	553
Female	311	66	39	1	3	22	47	21	114	40	29	46	739
Subtotal	532	101	94	6	11	36	80	40	195	71	41	85	1,292
Percent	8%	3%	5%	2%	2%	9%	8%	4%	10%	9%	5%	4%	6.1%
Hispanic													
Male	233	54	45	1	15	11	15	23	61	30	5	62	555
Female	257	45	18	4	16	16	42	27	52	30	16	42	565
Subtotal	490	99	63	5	31	27	57	50	113	60	21	104	1,120
Percent	7%	3%	3%	2%	5%	7%	6%	5%	6%	8%	3%	5%	5.3%
International Students													
Male	405	746	405	26	111	14	31	242	181	28	133	137	2,459
Female	300	486	219	23	96	19	105	136	135	26	168	121	1,834
Subtotal	705	1,232	624	49	207	33	136	378	316	54	301	258	4,293
Percent	11%	33%	33%	20%	31%	9%	14%	39%	16%	7%	36%	13%	20.3%
Native American													
Male	25	3	5	-	4	4	3	5	6	3	1	2	61
Female	20	5	2	-	1	1	3	4	5	3	2	7	53
Subtotal	45	8	7	-	5	5	6	9	11	6	3	9	114
Percent	1%	0%	0%	0%	1%	1%	1%	1%	1%	1%	0%	0%	0.5%
White/Non-Hispanic													
Male	1,464	852	407	50	142	93	141	154	495	149	75	569	4,591
Female	1,308	722	243	54	110	110	377	117	423	150	180	607	4,401
Subtotal	2,772	1,574	650	104	252	203	518	271	918	299	255	1,176	8,992
Percent	42%	42%	34%	42%	38%	53%	52%	28%	46%	40%	31%	59%	42.6%
Unknown/Other													
Male	473	195	153	5	32	33	30	94	162	23	40	69	1,309
Female	493	191	91	9	37	27	73	56	115	24	95	59	1,270
Subtotal	966	386	244	14	69	60	103	150	277	47	135	128	2,579
Percent	15%	10%	13%	6%	10%	16%	10%	16%	14%	6%	16%	6%	12.2%
TOTAL ⁽¹⁾	6,655	3,738	1,911	245	662	384	992	967	1,987	756	831	1,987	21,115

Percentage of Minority and International Students by Enrollment Level

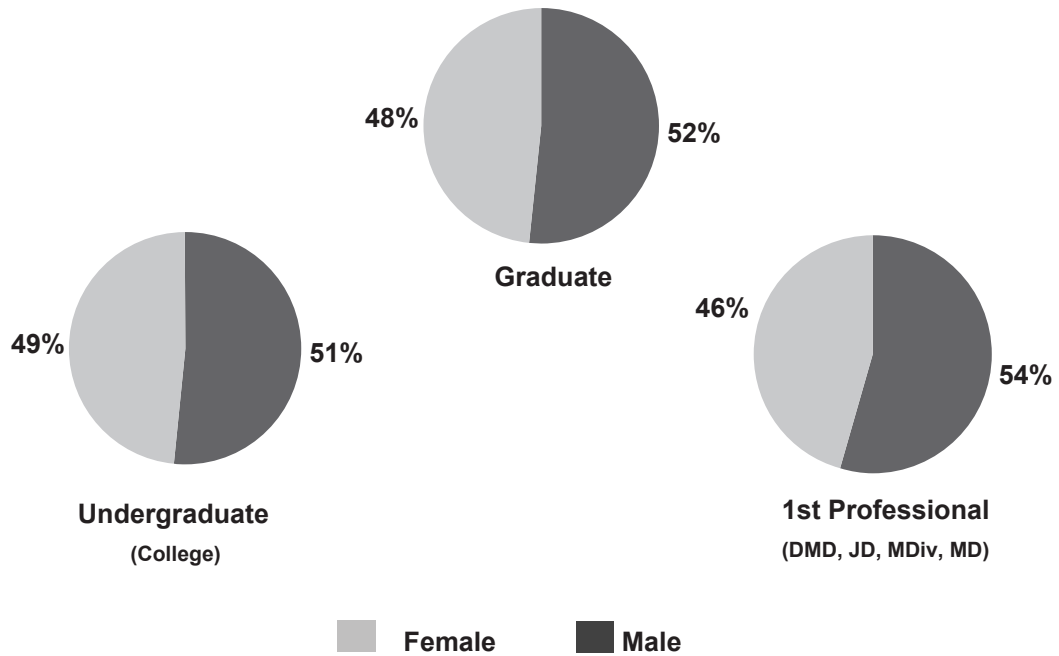


(1) Not adjusted for joint degree students. Harvard College and GSAS include engineering students.

SOURCE: REGISTRAR OFFICES

Degrees Conferred by School ⁽¹⁾ Academic Year 2008-2009

	Male	Female	Total
College	854	810	1,664
GSAS	539	373	912
Business	576	320	896
Dental	29	36	65
Design	110	96	206
Divinity	95	93	188
Education	124	473	597
Government	292	220	512
Law	402	329	731
Medical	100	101	201
Public Health	179	248	427
Extension			
Undergraduate	82	51	133
Graduate	277	227	504
TOTAL	3,659	3,377	7,036



(1) Not adjusted for joint degree students.
SOURCE: REGISTRAR OFFICES

Degrees Conferred by Program: Academic Year 2008-2009 ⁽¹⁾

		Male	Female	Total
College	A.B.	844	803	1,647
	S.B.	10	7	17
GSAS	A.M.	184	150	334
	S.M.	47	19	66
	Ph.D.	308	204	512
Business	M.B.A.	571	318	889
	D.B.A.	5	2	7
Dental	D.M.D.	15	15	30
	M.M.Sc.	4	5	9
	D.M.Sc.	3	2	5
	Certificate	7	14	21
Design	M.Arch.	56	41	97
	M.A.U.D., M.L.A.U.D.	12	5	17
	M.Des.	22	11	33
	M.L.A.	7	25	32
	M.U.P.	11	10	21
	D.Des.	2	4	6
Divinity	M.Div.	26	36	62
	M.T.S.	57	56	113
	Th.M.	7		7
	Th.D.	5	1	6
Education	Ed.M.	113	425	538
	Ed.D.	10	31	41
	C.A.S.	1	17	18
Government	M.P.A.	169	100	269
	M.P.A.I.D.	27	26	53
	M.P.P.	96	94	190
Law	J.D.	302	265	567
	LL.M.	93	58	151
	S.J.D.	7	6	13
Medical	M.D.	90	85	175
	M.M.Sc.	10	16	26
Public Health	M.P.H.	108	138	246
	M.S.	54	71	125
	D.P.H.	1	1	2
	D.S.	16	38	54
Extension	A.A.	9	9	18
	A.L.B.	73	42	115
	A.L.M.	233	197	430
	Graduate Certificates	44	30	74
	TOTAL	3,659	3,377	7,036

(1) Not adjusted for joint degree students.

SOURCE: REGISTRAR OFFICES

Harvard College Undergraduate Degrees Conferred by Concentration ⁽¹⁾
Academic Year 2008-2009

	Concentration	Male	Female	Total
Humanities	English and American Literature and Language	35	55	90
	History and Literature	19	35	54
	East Asian Studies	5	21	26
	Visual and Environmental Studies	7	16	23
	History of Art and Architecture	4	19	23
	Literature	10	6	16
	Romance Languages and Literatures	5	10	15
	Music	11	4	15
	Philosophy	10	4	14
	Comparative Study of Religion	7	6	13
	Classics	8	4	12
	Linguistics	5	6	11
	Near Eastern Languages and Civilizations	5	1	6
	Folklore and Mythology	2	2	4
	Slavic Languages and Literature	2	1	3
	Sanskrit and Indian Studies	-	1	1
		Humanities Subtotal	135	191
Natural Sciences	Biochemical Sciences	31	28	59
	Mathematics	44	12	56
	Human Evolutionary Biology	19	29	48
	Biology	18	27	45
	Applied Mathematics	29	15	44
	Physics	37	7	44
	Engineering Sciences (S.B. and A.B.)	21	10	31
	Molecular and Cellular Biology	15	15	30
	Chemistry	13	16	29
	Neurobiology	11	18	29
	Computer Science	18	7	25
	Organismic and Evolutionary Biology	12	13	25
	Chemistry and Physics	16	5	21
	Environmental Science and Public Policy	8	12	20
	Earth and Planetary Sciences	8	7	15
	Chemical and Physical Biology	6	6	12
	Statistics	4	-	4
	Astronomy and Astrophysics	2	2	4
		Natural Sciences Subtotal	312	229
Social Sciences	Economics	160	89	249
	Government	103	74	177
	Social Studies	54	54	108
	Psychology	31	66	97
	History	47	34	81
	Anthropology	11	34	45
	History of Science	14	25	39
	Sociology	15	23	38
	African and African American Studies	3	9	12
	Studies of Women, Gender and Sexuality	-	8	8
	Social Sciences Subtotal	438	416	854
	Special Concentrations Subtotal	2	3	5
	Grand Total ⁽¹⁾	887	839	1,726
	Joint Concentrators	33	29	62
	Unduplicated Student Count	854	810	1,664

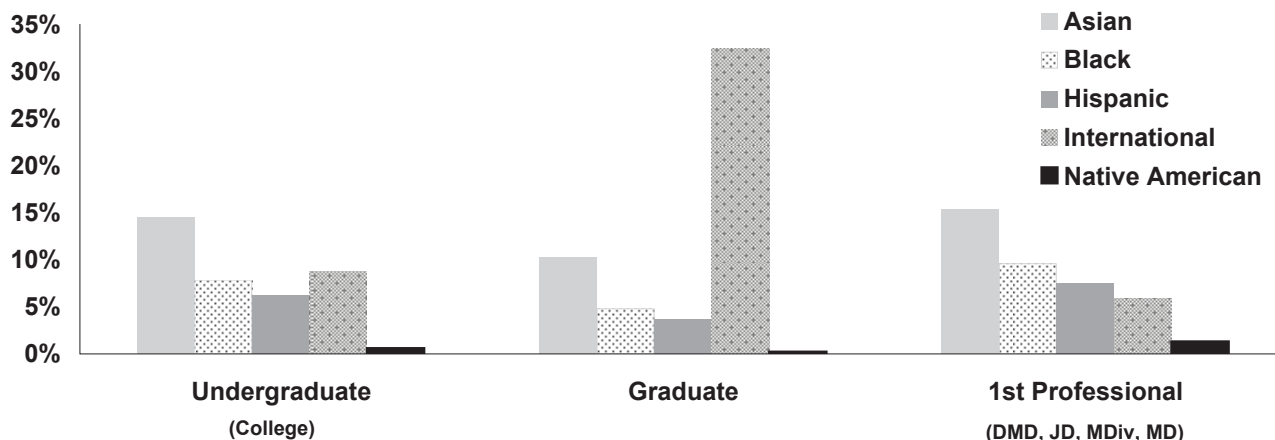
(1) Both concentrations for joint concentrators are included. An adjustment is provided to obtain the total unduplicated student count.

SOURCE: REGISTRAR OFFICES

Degrees Conferred by Student Ethnicity: Academic Year 2008-2009 ⁽¹⁾

	College	GSAS	Business	Dental	Design	Divinity	Education	Government	Law	Medical	Public Health	Extension	Total
Asian/Pacific Islander													
Male	103	48	49	3	12	3	10	17	37	25	22	60	389
Female	146	41	39	11	12	6	54	19	35	30	26	30	449
Subtotal	249	89	88	14	24	9	64	36	72	55	48	90	838
Percent	15%	10%	10%	22%	12%	5%	11%	7%	10%	27%	11%	14%	11.9%
Black/Non-Hispanic													
Male	64	12	28	-	2	4	7	11	26	7	7	26	194
Female	64	23	25	1	1	3	32	15	40	4	14	16	238
Subtotal	128	35	53	1	3	7	39	26	66	11	21	42	432
Percent	8%	4%	6%	2%	1%	4%	7%	5%	9%	5%	5%	7%	6.1%
Hispanic													
Male	48	21	14	1	4	3	11	14	18	7	1	23	165
Female	53	9	12	1	5	3	22	13	24	9	8	13	172
Subtotal	101	30	26	2	9	6	33	27	42	16	9	36	337
Percent	6%	3%	3%	3%	4%	3%	6%	5%	6%	8%	2%	6%	4.8%
International Students													
Male	92	188	204	6	44	16	15	135	106	6	70	36	918
Female	64	117	92	5	32	4	76	90	83	8	85	61	717
Subtotal	156	305	296	11	76	20	91	225	189	14	155	97	1,635
Percent	9%	33%	33%	17%	37%	11%	15%	44%	26%	7%	36%	15%	23.2%
Native American													
Male	3	-	3	-	-	2	-	2	4	-	-	1	15
Female	6	-	-	-	-	-	1	2	3	2	2	1	17
Subtotal	9	-	3	-	-	2	1	4	7	2	2	2	32
Percent	1%	0%	0%	0%	0%	1%	0%	1%	1%	1%	0%	0%	0.5%
White/Non-Hispanic													
Male	427	203	209	15	41	56	69	84	170	52	60	187	1,573
Female	360	131	118	11	43	73	238	54	123	47	77	148	1,423
Subtotal	787	334	327	26	84	129	307	138	293	99	137	335	2,996
Percent	47%	37%	36%	40%	41%	69%	51%	27%	40%	49%	32%	53%	42.6%
Unknown/Other													
Male	117	67	69	4	7	11	12	29	41	3	19	26	405
Female	117	52	34	7	3	4	50	27	21	1	36	9	361
Subtotal	234	119	103	11	10	15	62	56	62	4	55	35	766
Percent	14%	13%	11%	17%	5%	8%	10%	11%	8%	2%	13%	5%	10.9%
TOTAL	1,664	912	896	65	206	188	597	512	731	201	427	637	7,036

Percentage of Degrees Conferred to Minority and International Students



(1) Not adjusted for joint degree students.
SOURCE: REGISTRAR OFFICES

Degrees Conferred: Academic Year 2004-2009⁽¹⁾

	Academic Year	2004	2005	2006	2007	2008	2009
College	A.B.	1,658	1,672	1,629	1,671	1,710	1,647
	S.B.	13	17	11	25	13	17
	Subtotal	1,671	1,689	1,640	1,696	1,723	1,664
GSAS	A.M.	349	331	402	342	380	334
	M.E.	1	-	-	-	1	-
	M.F.S.	-	-	4	1	-	-
	S.M.	60	66	56	59	67	66
	Ph.D.	444	413	473	541	534	512
	Subtotal	854	810	935	943	982	912
Business	M.B.A.	894	884	903	901	907	889
	D.B.A.	4	6	3	5	5	7
	Subtotal	898	890	906	906	912	896
Dental	D.M.D.	33	34	32	30	40	30
	M.M.Sc.	12	12	9	13	14	9
	D.M.S.	3	11	4	8	5	5
	Cert.	19	12	36	20	40	21
	Subtotal	67	69	81	71	99	65
Design	M. Arch.	95	87	81	100	116	97
	M.A.U.D., M.L.A.U.D.	20	28	23	24	21	17
	M.Des.	67	55	45	11	33	33
	M.L.A.	29	47	25	37	25	32
	M.U.P.	17	32	21	24	29	21
	D.Des.	8	7	12	9	12	6
Subtotal	236	256	207	205	236	206	
Divinity	M.Div.	44	58	42	47	43	62
	M.T.S.	102	94	97	96	116	113
	Th.M.	5	4	9	4	3	7
	Th.D.	6	10	9	1	11	6
Subtotal	157	166	157	148	173	188	
Education	Ed.M.	617	643	580	591	552	538
	Ed.D.	60	53	70	53	40	41
	C.A.S.	4	3	11	19	15	18
	Subtotal	681	699	661	663	607	597
Government	M.P.A.	314	298	275	309	276	269
	M.P.A.I.D.	63	64	63	71	83	53
	M.P.P.	138	194	175	205	214	190
	M.U.P.	10	6	5	7	4	-
Subtotal	525	562	518	592	577	512	
Law	J.D.	551	547	582	574	588	567
	LL.M.	157	161	159	154	168	151
	S.J.D.	8	3	7	14	10	13
	Subtotal	716	711	748	742	766	731
Medicine	M.D.	177	147	152	189	174	175
	M.M.Sc.	24	26	22	23	22	26
	Subtotal	201	173	174	212	196	201
Public Health	M.P.H.	209	213	214	220	262	246
	M.S., M.O.H.	137	162	164	125	143	125
	D.P.H., D.S.	39	54	49	52	49	56
	Subtotal	385	429	427	397	454	427
Extension	A.A.	13	20	15	9	7	18
	A.L.B.	120	118	108	106	111	115
	A.L.M.	91	112	140	189	311	430
	Grad. Cert.	233	184	202	113	85	74
	Subtotal	457	434	465	417	514	637
TOTAL	6,848	6,888	6,919	6,992	7,239	7,036	

(1) Not adjusted for joint degree students.

SOURCE: REGISTRAR OFFICES

International Enrollment: Fall 2009 ⁽¹⁾

	Africa	Asia	Europe	Latin America	Middle East	North America	Oceania	Stateless	Total
College	53	175	198	25	43	148	23	1	666
GSAS	17	597	398	55	96	161	34	-	1,358
Business	21	192	206	56	37	84	12	-	608
Dental	-	19	3	2	8	14	-	-	46
Design	-	121	45	8	14	22	2	-	212
Divinity	3	17	7	-	-	8	-	-	35
Education	3	68	18	15	2	19	2	-	127
Government	32	140	105	50	32	32	13	-	404
Law	20	80	83	33	21	59	12	-	308
Medical	5	10	5	4	1	20	3	-	48
Public Health	28	124	20	24	14	45	5	-	260
Extension	3	25	9	11	3	5	-	-	56
TOTAL	185	1,568	1,097	283	271	617	106	1	4,128

(1) Counts include full-time degree and non-degree students only, which include transfer and special students, visiting undergraduates, and Extension School enrollees. Counts exclude students whose affiliation is listed as other, executive education and professional development programs.
SOURCE: INTERNATIONAL OFFICE

Historical Enrollment of International Students: Fall 2004 - 2009⁽¹⁾

	Fall					
	2004	2005	2006	2007	2008	2009
Africa						
Ghana	17	17	25	24	25	21
Kenya	23	18	21	17	20	21
Nigeria	20	25	22	27	35	41
South Africa	23	22	22	21	23	29
Zimbabwe	13	16	13	10	15	13
Other	52	64	60	78	60	60
Subtotal	148	162	163	177	178	185
Asia						
China	361	378	403	400	421	463
India	167	189	193	216	225	235
Japan	137	135	130	127	107	101
Singapore	67	75	71	66	89	114
South Korea	218	244	269	297	305	314
Other	281	298	313	307	328	341
Subtotal	1,231	1,319	1,379	1,413	1,475	1,568
Europe						
France	68	76	82	81	84	77
Germany	137	159	149	158	159	159
Greece	52	49	49	56	46	46
Italy	46	53	53	67	64	69
Spain	51	44	52	52	66	67
United Kingdom	191	177	194	201	209	227
Other	473	464	473	465	467	452
Subtotal	1,018	1,022	1,052	1,080	1,095	1,097
Latin America						
Argentina	48	35	44	42	32	35
Brazil	63	64	61	71	72	76
Chile	33	32	33	32	27	32
Colombia	43	40	50	35	41	43
Peru	22	20	28	24	16	19
Other	60	58	72	73	82	78
Subtotal	269	249	288	277	270	283
Middle East						
Iran	9	8	13	11	15	15
Israel	76	71	81	77	86	85
Lebanon	15	13	16	22	21	23
Saudi Arabia	10	10	10	10	14	14
Turkey	74	71	80	90	96	96
Other	37	42	37	41	35	38
Subtotal	221	215	237	251	267	271
North America						
Canada	467	481	471	489	530	538
Mexico	74	78	98	83	76	79
Subtotal	541	559	569	572	606	617
Oceania						
Australia	67	82	68	67	78	88
New Zealand	15	20	21	24	19	17
Other	-	1	-	-	1	1
Subtotal	82	103	89	91	98	106
Stateless	-	2	2	1	4	1
TOTAL	3,510	3,631	3,779	3,862	3,993	4,128

Africa Other: Benin, Botswana, Cameroon, Camoros, Côte d'Ivoire, Egypt, Ethiopia, Guinea-Bissau, Lesotho, Liberia, Madagascar, Malawi, Mauritius, Morocco, Namibia, Rwanda, Senegal, Sierra Leone, Sudan, Swaziland, Tanzania, Tunisia, Uganda, Zambia.

Asia Other: Afghanistan, Azerbaijan⁽²⁾, Bangladesh, Brunei, Burma (Myanmar), Cambodia, Hong Kong, Indonesia, Kazakhstan, Kyrgyz-stan, Macau, Malaysia, Mongolia, Nepal, Pakistan, Philippines, Sri Lanka, Taiwan, Tajikistan, Thailand, Uzbekistan, Vietnam.

Europe Other: Albania, Armenia, Austria, Belarus, Belgium, Bosnia and Herzegovina, Bulgaria, Croatia, Czech Republic, Denmark, Estonia, Finland, Georgia, Hungary, Iceland, Ireland, Latvia, Liechtenstein, Lithuania, Luxembourg, Macedonia, Moldova, Montenegro, Netherlands, Norway, Poland, Portugal, Romania, Russia, Serbia, Slovakia, Slovenia, Sweden, Switzerland, Ukraine, Yugoslavia.

Latin America Other: The Bahamas, Barbados, Bermuda, Bolivia, Costa Rica, Cuba, Dominica, Dominican Republic, Ecuador, El Salvador, Guatemala, Haiti, Honduras, Jamaica, Nicaragua, Panama, Paraguay, Trinidad and Tobago, Uruguay, Venezuela.

Middle East Other: Bahrain, Cyprus, Iraq, Jordan, Kuwait, Lebanon, Syria, United Arab Emirates, West Bank.

Oceania Other: Tonga, Fiji.

(1) Counts include full-time degree and non-degree students only, which includes transfer and special students, visiting undergraduates, and Extension School enrollees. Counts exclude students whose affiliation is listed as other, executive education and professional development programs. Countries listed are for Fall 2008. Information on countries for enrollments in prior years can be obtained from the International Office.

(2) Azerbaijan has historically been included in "Europe Other", but is included in "Asia Other" for Fall 2009

Summer School Enrollment: Summer 2004 - 2009

Harvard Students by School ⁽¹⁾

	2004	2005	2006	2007	2008	2009
College	334	435	497	594	642	620
GSAS	55	76	57	77	61	57
Education	10	10	3	5	6	3
Extension	365	354	339	387	484	600
Other Harvard Schools	21	11	16	14	17	12
Subtotal	785	886	912	1077	1,210	1,292

Other Students by Educational Level ⁽²⁾⁽³⁾

Secondary School	1,020	1,156	1,444	1,362	1,502	1,499
Graduate	1,593	1,656	1,831	2,002	2,303	2,033
Undergraduate	1,122	1,109	1,286	1,409	1,650	1,303
Unknown	89	71	67	70	72	73
Subtotal	3,824	3,992	4,628	4,843	5,527	4,908
TOTAL	4,609	4,878	5,540	5,920	6,737	6,200

Non-Degree Headcount: Fall 2004 - 2009 ⁽⁴⁾

	2004	2005	2006	2007	2008	2009		
						Male	Female	Total
College	-	36	-	-	-	-	-	-
GSAS	188	220	184	160	167	90	75	165
Design	2	6	2	3	3	2	1	3
Divinity	16	7	8	14	6	2	2	4
Education	95	89	104	107	104	12	51	63
Government	10	8	11	21	33	22	10	32
Law	40	68	49	48	35	5	13	18
Medical	-	1	-	-	-	-	-	-
Public Health	-	22	5	8	4	7	4	11
Extension ⁽⁵⁾	4,470	4,675	5,265	5,300	5,859	2,941	3,299	6,240
TOTAL	4,821	5,132	5,628	5,661	6,211	3,081	3,455	6,536

(1) Counts include matriculating Harvard students enrolled in Harvard courses during the summer session.

(2) Beginning with 2004, high school graduates enrolled in secondary school programs are counted as undergraduates instead of Secondary School students.

(3) Previous versions of this page erroneously reversed counts for "Undergraduate" and "Secondary School" students in 2007 and 2008.

(4) Non-degree enrollments include all students enrolled on October 15 in at least one class that is creditable toward a degree or formal award.

2005 counts include 58 graduate students and 36 College students displaced by Hurricane Katrina.

(5) Counts are for the first semester only. This significantly undercounts yearly enrollment in the Extension School as approximately the same number of new students might be enrolled in the second semester.

SOURCE: HARVARD UNIVERSITY EXTENSION SCHOOL AND REGISTRAR OFFICES

Faculty and Staff Overview

Total Harvard Employees by Time Status and Year

Source: IPEDS HR Report, November 1 snapshots

Individuals are counted only once; Total FTE of .75 or greater qualifies as full-time

Includes all active, paid, primary appointments from the following employee classes:

Faculty and Other Academics (F,J,O); Administrators (A); Service & Trades (U,L);

Support Staff (S); Teaching Assistants (I); Internal Post Docs (Y); Graduate Students (G)

Time Status	2009	2008	2007	2006	2005	2004	2003
Full Time	13,694	14,144	13,635	13,158	12,874	12,850	12,945
Part Time	2,420	2,552	2,520	2,551	2,600	2,594	2,740
Graduate Assistants	1,961	2,024	1,975	1,845	2,408	2,395	2,322
Total	18,075	18,720	18,130	17,554	17,882	17,839	18,007

Faculty by Time Status (Unduplicated Count)

Source: IPEDS HR Report; Limited to employees reported to IPEDS as having faculty status

Time Status	2009
Full Time	1,991
Part Time	419
Total	2,410

Faculty by Harvard School and Tenure/Ladder Category, Fall 2009

Source: Data compiled for Faculty Development and Diversity Annual Report, July 1 snapshots

Includes primary and secondary appointments; includes paid and non-paid appointments

Individuals are counted once in each School in which they hold an instructional faculty appointment

The "University" column contains unduplicated totals and excludes the HMS affiliates

Category	University						
	(excl. affiliates)	FAS	SEAS	GSD	GSE	HBS	HDS
Tenured	997	467	53	30	27	96	22
Pre-Tenure Ladder	510	182	18	21	21	86	8
Core Non-Ladder	780	318	10	30	41	49	8
Other Non-Ladder	517	21	-	9	34	8	18
Total	2,804	988	81	90	123	239	56

Category	HMS						
	HKS	HLS	HMS	HSDM	HSPH	OTHER	Affiliates
Tenured	51	84	114	7	73	8	769
Pre-Tenure Ladder	23	10	62	18	61	-	3,017
Core Non-Ladder	50	47	70	46	118	2	4,581
Other Non-Ladder	48	24	76	170	113	-	2,264
Total	172	165	322	241	365	10	10,631

The following jobs are included as Faculty (with some exceptions to the categorizations shown):

<u>Tenured Faculty</u>	<u>Core Non-Ladder Faculty</u>	<u>Other Non-Ladder Faculty</u>
Professor, Chaired	Professor of Practice	Professor of Practice, Visiting
Professor, University	Professor of Practice, Chaired	Professor, Visiting
Professor	Professor, Clinical	Professor, Visiting Assistant
	Professor, Associate Clinical	Professor, Visiting Associate
<u>Pre-Tenure Ladder Faculty</u>	Professor, Assistant Clinical	Professor, Associate Adjunct
Professor, Associate	Lecturer, Senior	Professor, Assistant Adjunct
Professor, Associate Chaired	Lecturer (Faculty)	Professor, Adjunct
Professor, Assistant	Lecturer	Instructor, Adjunct
Professor, Assistant Chaired	Instructor (HMS Only)	Lecturer, Annual
Instructor, Convertible	Critic	Lecturer, Visiting
	Preceptor	Lecturer, Adjunct
	Preceptor, Senior (Faculty)	Instructor, Clinical (Oth Fac)
	Preceptor (Faculty)	Assistant, Clinical
	Preceptor (Other Faculty)	

Faculty Demographics

Source: Data compiled for Faculty Development and Diversity Annual Report, July 1 snapshot

Includes primary and secondary appointments; paid and non-paid appointments

Individuals are counted once in each School in which they hold an instructional faculty appointment

The "University" row contains an unduplicated total, so it does not represent a sum of all other rows

Both tables exclude faculty in the Medical School's affiliated hospitals

For more information on faculty diversity, view the complete FD&D annual report: www.faculty.harvard.edu.

Ladder Faculty by Gender, Fall 2009

	Total	Count		Percentage	
		Men	Women	Men	Women
Faculty of Arts and Sciences - All	649	473	176	73%	27%
Humanities	203	134	69	66%	34%
Life Sciences	105	81	24	77%	23%
Physical Sciences	99	87	12	88%	12%
Social Sciences	242	171	71	71%	29%
Engineering and Applied Sciences	71	62	9	87%	13%
Business	182	139	43	76%	24%
Dental	25	21	4	84%	16%
Design	51	36	15	71%	29%
Divinity	30	19	11	63%	37%
Education	48	26	22	54%	46%
Government	74	58	16	78%	22%
Law	94	76	18	81%	19%
Medical	176	134	42	76%	24%
Public Health	134	94	40	70%	30%
Other	8	6	2	75%	25%
University (Unduplicated)	1,507	1,112	395	74%	26%

Ladder Faculty by Race/Ethnicity, Fall 2009

	Total	Black or African American					White
		Asian	Hispanic	Native American	Other		
Faculty of Arts and Sciences - All	649	61	22	13	1	552	
Humanities	203	16	1	5	1	180	
Life Sciences	105	13	2	3	-	87	
Physical Sciences	99	19	-	1	-	79	
Social Sciences	242	13	19	4	-	206	
Engineering and Applied Sciences	71	15	2	-	-	54	
Business	182	33	4	9	-	136	
Dental	25	5	-	-	-	20	
Design	51	2	1	7	-	41	
Divinity	30	1	1	2	-	26	
Education	48	7	4	1	-	36	
Government	74	8	2	5	-	59	
Law	94	2	6	1	1	84	
Medical	176	13	2	3	1	157	
Public Health	134	23	3	3	-	105	
Other	8	-	2	-	-	6	
University (Unduplicated)	1,507	168	45	42	3	1,249	

Non-Faculty Staff in the Schools ⁽¹⁾

Counts are Full-Time Equivalent Figures as of October 31, 2009

University-Wide Totals	University Funding			Sponsored Funding			Non-Faculty Academic Staff ⁽²⁾			Grand Total
	Administrative & Professional	Clerical & Technical	Service & Trades	Administrative & Professional	Clerical & Technical	Subtotal	University Funding	Sponsored Funding	Subtotal	
Faculties	3,557.5	2,903.1	66.2	385.2	507.3	7,419.3	471.9	858.9	1,330.8	8,750.1
Allieds	324.9	179.0	39.8	13.2	23.6	580.5	34.8	19.1	53.8	634.3
Central Administration ⁽³⁾	655.2	363.8	63.0	1.5	1.0	1,084.4	-	-	-	1,084.4
Service Departments ⁽³⁾	711.4	359.7	805.2	-	-	1,876.3	2.0	-	2.0	1,878.3
Non-Departmental & Special ⁽⁴⁾	41.5	56.8	-	-	-	98.3	-	-	-	98.3
TOTAL	5,290.5	3,862.4	974.1	399.9	531.9	11,058.8	508.6	878.0	1,386.6	12,445.5

Faculties	University Funding			Sponsored Funding			Non-Faculty Academic Staff ⁽²⁾			Grand Total
	Administrative & Professional	Clerical & Technical	Service & Trades	Administrative & Professional	Clerical & Technical	Subtotal	University Funding	Sponsored Funding	Subtotal	
Faculty of Arts and Sciences ⁽⁵⁾	703.8	640.6	-	73.9	84.5	1,502.9	239.2	235.0	474.2	1,977.1
Athletics	112.8	25.7	-	-	-	138.5	21.0	-	21.0	159.5
College Library	226.2	229.0	-	1.0	-	456.2	-	-	-	456.2
Division of Continuing Education	83.5	74.9	-	-	-	158.4	-	-	-	158.4
GSAS	24.5	21.5	-	-	-	46.0	-	-	-	46.0
College Life & Student Dorms	118.2	73.8	-	-	-	192.0	-	-	-	192.0
Museums ⁽⁶⁾	70.1	84.4	-	2.9	6.6	164.0	5.0	11.4	16.4	180.4
Yenching	4.0	2.0	-	-	-	6.0	-	-	-	6.0
Subtotal	1,343.1	1,151.9	-	77.8	91.1	2,663.9	265.1	246.4	511.6	3,175.5
SEAS ⁽⁷⁾	60.4	54.2	9.5	17.3	11.5	152.8	31.9	71.0	102.9	255.7
Business	478.2	261.7	-	-	-	739.9	-	-	-	739.9
Publishing Division	254.5	7.0	-	-	-	261.5	-	-	-	261.5
Subtotal	732.8	268.7	-	-	-	1,001.4	-	-	-	1,001.4
Dental	27.6	60.2	-	0.2	4.2	92.3	7.7	14.3	22.0	114.3
Design	44.8	50.3	-	-	-	95.1	0.3	-	0.3	95.4
Divinity	60.6	39.0	-	-	0.1	99.7	0.4	-	0.4	100.1
Education	149.3	112.5	-	24.6	15.6	302.0	8.5	7.0	15.5	317.5
Government	232.5	170.6	-	24.0	13.6	440.7	40.9	11.3	52.2	492.9
Law	227.3	206.4	-	14.4	7.3	455.2	17.0	6.0	23.0	478.2
Medical	424.5	521.6	56.7	83.5	212.3	1,298.5	75.1	409.1	484.2	1,782.7
Public Health	197.3	236.9	-	143.5	151.7	729.4	25.0	93.8	118.8	848.2
Radcliffe Institute for Advanced Study	57.3	30.9	-	-	-	88.2	-	-	-	88.2
Subtotal Faculties	3,557.5	2,903.1	66.2	385.2	507.3	7,419.3	471.9	858.9	1,330.8	8,750.1

(1) Figures do not include temporary employees (except limited regular guards and custodians), LHT's (less-than-half-time), students or teaching fellows. Counts include only filled positions.

(2) Counts include Academic Clinical Fellows, Academic Department/Program Fellows, Coaching Assistants, Internal Post Docs, Teaching Assistants and Visiting Fellows.

(3) Core departments provide central functions of the University (accounts payable, HR benefits, etc.) and are supported through funds from the President, Faculties, and departments. Service departments derive their revenue on a fee-for-service basis from internal customers.

(4) Non-Departmental and Special include Signet Society, Credit Union, Harvard Student Agencies, and LASPAU.

(5) The Faculty of Arts and Sciences includes FTEs for Dumbarton Oaks. In addition Dumbarton Oaks has additional personnel on local data systems who are not reflected in the counts above.

(6) Museums include Harvard University Herbarium, Harvard Museum of Natural History, Museum of Comparative Zoology, Peabody Museum and Semitic Museum.

(7) SEAS refers to the School of Engineering and Applied Sciences.

SOURCE: HUMAN RESOURCE PERSONNEL/PAYROLL DATABASE

Non-Faculty Staff in the Allied Institutions, Central Administration and Service Departments ⁽¹⁾

Counts are Full-Time Equivalent Figures as of October 31, 2009

	University Funding			Sponsored Funding			Non-Faculty Academic Staff ⁽²⁾			Grand Total
	Administrative & Professional	Clerical & Technical	Service & Trades	Administrative & Professional	Clerical & Technical	Subtotal	University Funding	Sponsored Funding	Subtotal	
	Allied Institutions									
American Repertory Theatre	46.0	18.1	-	-	-	64.1	1.2	-	1.2	65.3
Arnold Arboretum	27.8	21.3	15.0	0.5	-	64.6	5.9	1.1	7.0	71.6
Art Museums	87.2	50.6	24.8	3.0	-	165.5	-	-	-	165.5
Harvard Magazine	16.4	1.9	-	-	-	18.3	-	-	-	18.3
Inter-Faculty Initiatives	60.2	36.7	-	9.7	23.6	130.2	20.6	18.0	38.6	168.8
Institute of Politics	7.9	7.0	-	-	-	14.9	7.0	-	7.0	21.9
Joint Center for Housing Studies	5.6	6.0	-	-	-	11.6	-	-	-	11.6
Memorial Church	5.0	8.4	-	-	-	13.4	-	-	-	13.4
Nieman Foundation	12.1	4.0	-	-	-	16.1	-	-	-	16.1
University Press	52.2	25.1	-	-	-	77.3	-	-	-	77.3
Villa I Tatti ⁽³⁾	4.6	-	-	-	-	4.6	-	-	-	4.6
Subtotal	324.9	179.0	39.8	13.2	23.6	580.5	34.8	19.1	53.8	634.3

Central Administration - Core and Service Departments ⁽⁴⁾

Core departments in bold, service departments in italics

Allston Development Group	25.6	11.4	-	-	-	37.0	-	-	-	37.0
President & Provost	81.3	37.3	1.0	-	-	119.5	-	-	-	119.5
<i>University Information Services</i>	224.7	82.9	-	-	-	307.6	-	-	-	307.6
<i>University Health Services</i>	145.9	120.1	-	-	-	266.1	2.0	-	2.0	268.1
VP Administration	25.2	8.4	-	-	-	33.5	-	-	-	33.5
<i>Dining Services</i>	71.0	20.0	335.6	-	-	426.6	-	-	-	426.6
<i>Faculty Club</i>	11.0	3.0	21.1	-	-	35.2	-	-	-	35.2
<i>Harvard Real Estate Services</i>	50.6	47.1	-	-	-	97.7	-	-	-	97.7
<i>University Operations Services</i>	135.3	53.2	448.5	-	-	637.0	-	-	-	637.0
VP Development & Alumni Affairs	103.2	73.8	-	-	-	177.0	-	-	-	177.0
<i>Fund Raising Campaigns</i>	73.0	33.3	-	-	-	106.3	-	-	-	106.3
VP Finance	167.1	94.9	-	-	-	262.0	-	-	-	262.0
VP General Counsel	57.4	30.0	62.0	-	-	149.4	-	-	-	149.4
VP Government, Community and Public Affairs	27.2	20.0	-	-	-	47.2	-	-	-	47.2
VP Human Resources	92.4	44.4	-	-	-	136.7	-	-	-	136.7
University Library	75.8	43.7	-	1.5	1.0	122.0	-	-	-	122.0
Subtotal	1,366.6	723.5	868.2	1.5	1.0	2,960.7	2.0	-	2.0	2,962.7
Non-Departmental & Special ⁽⁵⁾	41.5	56.8	-	-	-	98.3	-	-	-	98.3

(1) Figures do not include temporary employees (except limited regular guards and custodians), LHT's (less-than-half-time), students or teaching fellows. Counts include only filled positions.

(2) Counts include Academic Clinical Fellows, Academic Department/Program Fellows, Coaching Assistants, Internal Post Docs, Teaching Assistants and Visiting Fellows.

(3) Additional personnel on local data systems are not included in this count.

(4) Core departments provide central functions of the University (accounts payable, HR benefits etc.) and are supported through funds from the President, Faculties, and departments. Service departments derive their revenue on a fee-for-service basis from internal customers.

(5) Non-Departmental and Special include Signet Society, Credit Union, Harvard Student Agencies, and LASPAU.

SOURCE: HUMAN RESOURCE PERSONNEL/PAYROLL DATABASE

Tuition at Harvard Schools: FY1990 – FY2010⁽¹⁾

Fiscal Year	College	GSAS	Business	Design	Divinity	Education	Government ⁽²⁾	Law	Medical/Dental ⁽³⁾	Public Health ⁽⁴⁾
1990	13,085	13,085	15,350	13,110	8,630	12,232	12,570	13,400	16,850	12,515
1991	13,960	13,960	16,400	14,300	9,200	13,152	13,390	14,475	18,030	13,570
1992	14,860	14,860	17,500	15,450	9,940	14,192	14,662	15,560	19,110	14,790
1993	15,870	15,870	18,550	16,650	10,540	15,044	15,690	16,730	20,257	15,675
1994	16,856	16,856	19,750	17,483	11,070	15,796	16,631	17,750	21,260	16,775
1995	17,851	17,851	21,000	18,360	11,630	16,664	17,710	19,080	22,300	17,770
1996	18,838	18,838	22,700	19,276	12,220	17,581	18,650	20,500	23,192	18,840
1997	19,770	19,770	23,840	20,240	12,830	18,460	19,770	21,700	24,150	19,800
1998	20,600	20,600	25,000	21,252	13,480	19,476	20,720	22,800	25,200	20,890
1999	21,342	21,342	26,260	22,208	14,160	20,430	21,656	23,900	26,000	21,895
2000	22,054	22,054	27,250	23,163	14,870	21,410	22,520	25,000	27,000	22,950
2001	22,694	22,694	28,500	24,159	15,620	22,600	23,400	26,000	28,000	23,980
2002	23,457	23,370	30,050	25,195	16,400	23,720	24,320	27,500	29,000	25,050
2003	24,630	24,630	31,800	26,330	17,220	25,144	26,488	29,500	30,500	26,300
2004	26,066	26,066	33,650	27,910	18,080	26,628	28,580	31,250	32,000	27,670
2005	27,448	27,448	35,600	29,500	18,984	28,092	30,272	33,120	34,250	29,300
2006	28,752	28,752	37,500	30,916	19,920	29,360	31,752	35,100	35,800	30,620
2007	30,275	30,275	39,600	32,152	20,712	30,544	33,276	37,100	37,200	31,800
2008	31,456	31,456	41,900	33,438	21,544	31,696	34,807	39,325	38,600	34,085
2009	32,557	32,556	43,800	34,608	22,080	32,896	36,168	41,500	39,900	35,403
2010	\$33,696	\$33,696	\$46,150	\$35,992	\$22,856	\$34,208	\$37,576	\$43,900	\$42,500	\$36,125

Average Annual Growth Rates

	College	GSAS	Business	Design	Divinity	Education	Government	Law	Medical/Dental	Public Health
20 YEAR	4.8%	4.8%	5.7%	5.2%	5.0%	5.3%	5.6%	6.1%	4.7%	5.4%
10 YEAR	4.3%	4.3%	5.4%	4.5%	4.4%	4.8%	5.3%	5.8%	4.6%	4.6%
5 YEAR	4.2%	4.2%	5.3%	4.1%	3.8%	4.0%	4.4%	5.8%	4.4%	4.3%
1 YEAR	3.5%	3.5%	5.4%	4.0%	3.5%	4.0%	3.9%	5.8%	6.5%	2.0%

(1) All amounts exclude the University Health Service fee.

(2) For FY03 and FY04, the School of Government implemented two tuition rate increases: one for first-year students (shown above) and one for returning students (FY03 is \$25,440 and FY04 is \$27,704).

(3) Dental School tuition is \$35,790 for FY06 and \$26,050 for FY99.

(4) Beginning in FY08, HSPH implemented different full-time tuition amounts for one-year programs (MPH, MS 1-year) and multiple-year programs (MS 2-year and DS). Amount shown in table is for one-year programs. Full-time tuition for two-year Master's programs in fiscal year 2009-10 is \$34,000.

SOURCE: ANNUAL TUITION PROPOSALS APPROVED BY THE CORPORATION.

Undergraduate Package at Harvard and Peer Institutions: FY2009 – FY2010 ¹

Ranked in descending order for FY2010

Institution	Actual		Change FY2009 - 2010		Notes
	FY2009	FY2010	Percent	Nominal	
Columbia Total	\$49,306	\$51,544	4.5%	\$2,238	
Tuition	37,470	39,296	4.9%	\$1,826	
Health Fee	774	774	0.0%	\$0	
Mandatory Fees	1,082	1,246	15.2%	\$164	Student Life Fee: \$1,082 Student Life Fee: \$1,246
Room & Board	9,980	10,228	2.5%	\$248	
Chicago Total	\$49,329	\$51,078	3.5%	\$1,749	
Tuition	36,891	38,550	4.5%	\$1,659	
Health Fee	531	565	6.4%	\$34	
Mandatory Fees	210	266	26.7%	\$56	Activity Fee: \$210 Activity Fee: \$266
Room & Board	11,697	11,697	0.0%	\$0	
UPenn Total	\$48,547	\$50,406	3.8%	\$1,859	
Tuition	33,608	34,868	3.7%	\$1,260	General Fee: \$3,064 General Fee: \$3,178
Health Fee	400	420	5.0%	\$20	
Mandatory Fees	3,918	4,102	4.7%	\$184	Tech Fee: \$604 Tech Fee: \$624
Room & Board	10,621	11,016	3.7%	\$395	Rec Fee: \$250 Rec Fee: \$300
Cornell Total	\$48,144	\$50,114	4.1%	\$1,970	
Tuition	36,300	37,750	4.0%	\$1,450	
Mandatory Fees	204	204	0.0%	\$0	Activity Fee: \$204 Activity Fee: \$204
Room & Board	11,640	12,160	4.5%	\$520	
Dartmouth Total	\$47,694	\$49,974	4.8%	\$2,280	
Tuition	36,690	38,445	4.8%	\$1,755	
Mandatory Fees	225	234	4.0%	\$9	Activity Fee: \$225 Activity Fee: \$234
Room & Board	10,779	11,295	4.8%	\$516	
Stanford Total	\$47,542	\$49,701	4.5%	\$2,159	
Tuition	36,030	37,380	3.7%	\$1,350	
Health Fee	-	501	-	-	Associated Students Associated Students
Mandatory Fees	330	357	8.2%	\$27	of Stanford Univ. \$330 of Stanford Univ. \$357
Room & Board	11,182	11,463	2.5%	\$281	
MIT Total	\$47,250	\$49,142	4.0%	\$1,892	
Tuition	36,140	37,510	3.8%	\$1,370	
Mandatory Fees	250	272	8.8%	\$22	Activity Fee: \$250 Activity Fee: \$272
Room & Board	10,860	11,360	4.6%	\$500	
Brown Total	\$47,740	\$49,128	2.9%	\$1,388	
Tuition	36,928	38,048	3.0%	\$1,120	
Health Fee	626	630	0.6%	\$4	
Mandatory Fees	164	170	3.7%	\$6	Activity Fee: \$164 Activity Fee: \$170
Room & Board	10,022	10,280	2.6%	\$258	
Harvard Total	\$47,215	\$48,868	3.5%	\$1,653	
Tuition	32,557	33,696	3.5%	\$1,139	
Health Fee	1,426	1,126	-21.0%	(\$300)	Student Services Student Services
Mandatory Fees	2,190	2,190	0.0%	\$0	Fee: \$2,190 Fee: \$2,190
Room & Board	11,042	11,856	7.4%	\$814	
Princeton Total ⁽²⁾	\$46,415	\$47,780	2.9%	\$1,365	Res. College Fee: \$620 Res. College Fee: \$640
Tuition	34,290	35,340	3.1%	\$1,050	(Fresh, Soph & some Jr.) (Fresh, Soph & some Jr.)
Mandatory Fees	720	760	5.6%	\$40	Class Dues: \$40 Class Dues: \$55
Room & Board	11,405	11,680	2.4%	\$275	Activity Fee: \$60 Activity Fee: \$65
Yale Total	\$46,000	\$47,500	3.3%	\$1,500	
Tuition	35,300	36,500	3.4%	\$1,200	
Room & Board	10,700	11,000	2.8%	\$300	

(1) The mandatory health fee is only shown separately for institutions that do not include it in tuition.

Cornell's health fee (\$1,514 in FY09 and \$1,590 in FY10), is optional and excluded.

(2) Princeton does not include its mandatory fees as part of its announced package. The mandatory fees have been included in the FY09 and FY10 totals for consistent comparison.

SOURCE: INTERNAL SURVEY

Undergraduate Tuition Over Time: FY1990 - FY2010

Academic Year	Undergraduate Package						Economic Indicators			
	Health Services			Student Services			CPI-U (1982-84=100)		HEPI	Median Family Income
	Tuition	Fee	Room	Board	Fee	Total	US	Boston	(1983=100)	Ages 45-54
1989-90	13,085	460	2,560	2,275	1,015	19,395	124.0	131.3	132.8	42,192
1990-91	13,960	490	2,700	2,425	1,080	20,655	130.7	138.9	140.8	46,101
1991-92	14,860	550	2,900	2,620	1,150	22,080	136.2	145.0	148.1	47,164
1992-93	15,870	584	3,075	2,765	1,220	23,514	140.3	148.6	153.4	49,606
1993-94	16,856	614	3,225	2,910	1,275	24,880	144.5	152.9	157.9	50,079
1994-95	17,851	634	3,370	3,040	1,335	26,230	148.2	154.9	163.3	52,034
1995-96	18,838	634	3,510	3,200	1,393	27,575	152.4	158.6	168.3	54,379
1996-97	19,770	654	3,659	3,336	1,477	28,896	156.9	163.3	173.3	55,029
1997-98	20,600	666	3,808	3,470	1,536	30,080	160.5	167.9	178.6	57,161
1998-99	21,342	686	3,940	3,574	1,590	31,132	163.0	171.7	184.9	59,959
1999-00	22,054	711	4,072	3,685	1,642	32,164	166.6	176.0	189.1	61,833
2000-01	22,694	745	4,190	3,792	1,689	33,110	172.2	183.6	196.9	65,303
2001-02	23,457	816	4,331	3,919	1,746	34,269	177.1	191.5	206.5	68,082
2002-03	24,630	1,020	4,461	4,041	1,798	35,950	179.9	196.5	212.7	68,114
2003-04	26,066	1,142	4,706	4,162	1,852	37,928	184.0	203.9	223.5	69,180
2004-05	27,448	1,264	4,974	4,286	1,908	39,880	188.9	209.5	231.7	70,149
2005-06	28,752	1,370	5,148	4,430	1,975	41,675	195.3	216.4	240.8	71,002
2006-07	30,275	1,390	5,328	4,618	2,044	43,655	201.6	223.1	253.1	72,881
2007-08	31,456	1,426	5,856	4,766	2,116	45,620	207.3	227.4	260.3	75,692
2008-09	32,557	1,426	6,060	4,982	2,190	47,215	215.3	235.4	273.2	77,440
2009-10	\$33,696	\$1,126	\$7,248	\$4,608	\$2,190	\$48,868	214.5	233.8	279.3	75,651

Average Annual Growth Rates

	Undergraduate Package						Economic Indicators ⁽¹⁾			
	Health Services			Student Services			CPI-U (1982-84=100)		HEPI	Median Family Income
	Tuition	Fee	Room	Board	Fee	Total	US	Boston	(1983=100)	Ages 45-54
20 YEAR	4.8%	4.6%	5.3%	3.6%	3.9%	4.7%	2.8%	2.9%	3.8%	3.0%
10 YEAR	4.3%	4.7%	5.9%	2.3%	2.9%	4.3%	2.6%	2.9%	4.0%	2.0%
5 YEAR	4.2%	-2.3%	7.8%	1.5%	2.8%	4.1%	2.6%	2.2%	3.8%	1.5%
1 YEAR	3.5%	-21.0%	19.6%	-7.5%	0.0%	3.5%	-0.4%	-0.7%	2.2%	-2.3%

(1) Economic Indicators are based on the most recent indicators available at time of publication.

SOURCE: BUREAU OF LABOR STATISTICS, US CENSUS BUREAU, COMMONFUND INSTITUTE.

Degree Student Financial Assistance: FY2009 ⁽¹⁾

Expressed in thousands of dollars

GRANTS

	Institutional	Federal	Other Outside	Total	Grants as a
					% of Total School Aid
College	\$132,682	\$7,856	\$10,589	\$151,127	87.7%
GSAS	92,683	20,672	7,915	121,270	75.2%
Business	27,416	213	2,487	30,116	37.3%
Dental	1,218	44	160	1,421	14.8%
Design	7,609	23	561	8,193	43.3%
Divinity	9,700	13	185	9,898	69.3%
Education	11,074	66	1,845	12,985	53.5%
Government	16,978	1,002	7,555	25,535	63.3%
Law	16,920	234	1,819	18,972	24.4%
Medical	13,057	2,461	2,357	17,874	57.2%
Public Health	9,196	2,472	3,510	15,178	65.4%
Extension	995	282	259	1,535	19.6%
TOTAL	\$339,528	\$35,336	\$39,240	\$414,104	62.6%

Grants

Institutional grants are from University unrestricted and restricted monies.

Federal grants include all Federal programs in each school including programs such as the Pell grant, SEOG or graduate training grants.

Outside grants include state and private support of students. In some schools, these numbers may include corporate sponsorship or other sponsored billing.

LOANS

	Institutional	Federal	Other Outside	Total	Loans as a
					% of Total School Aid
College ⁽²⁾	\$4,303	\$8,865	\$1,243	\$14,411	8.4%
GSAS	-	1,690	108	1,798	1.1%
Business	1,369	25,697	23,486	50,553	62.7%
Dental	112	7,252	786	8,151	85.2%
Design	-	8,402	1,668	10,070	53.2%
Divinity	45	3,458	-	3,504	24.5%
Education	58	10,369	367	10,794	44.5%
Government	249	11,098	1,928	13,275	32.9%
Law	2,219	50,283	5,721	58,224	75.0%
Medical	3,378	9,642	310	13,330	42.7%
Public Health	86	5,872	2,021	7,979	34.4%
Extension	-	5,073	1,210	6,283	80.4%
TOTAL	\$11,819	\$147,703	\$38,848	\$198,370	30.0%

Loans

Institutional loans are made to students from University capital without Federal guarantee.

Federal loan programs may involve capital from Harvard, or other private or Federal sources, loaned under Federal sponsorship such as Perkins, Direct Loans and FFEL programs.

Outside loans include private capital loaned to students or parents. It excludes personal loans.

EMPLOYMENT

	Work-Study (CWSP)	Other Term	Total	Employment as	TOTAL
				a % of Total School Aid	
College	\$1,713	\$5,061	\$6,775	3.9%	\$172,313
GSAS	317	37,805	38,122	23.7%	161,190
Business	-	-	-	0.0%	80,669
Dental	-	-	-	0.0%	9,572
Design	436	227	663	3.5%	18,925
Divinity	881	-	881	6.2%	14,282
Education	496	-	496	2.0%	24,275
Government	365	1,149	1,514	3.8%	40,323
Law	-	421	421	0.5%	77,618
Medical	48	-	48	0.2%	31,252
Public Health	41	-	41	0.2%	23,198
Extension	-	-	-	0.0%	7,818
TOTAL	\$4,297	\$44,664	\$48,961	7.4%	\$661,435

Employment

Work-Study is a Federally-sponsored partnership with colleges and universities to provide students with the opportunity to work while in school.

Other term earnings reflect on-campus earnings by students who are not part of the work-study program. Jobs include casual employment (to the extent known), teaching fellowships, research assistantships and resident tutors.

(1) Amounts do not include the Business School, Law School, Medical School or the School of Government funding for graduates in the Low Income Protection Plan/Loan Repayment Assistance Programs.

(2) College total for loans includes \$9,099,053 in PLUS Loans and other Parental Loans.

SOURCE: INTERNAL SURVEY

Federal Sponsored Research: FY2008- FY2009

Expressed in thousands of dollars

FACULTIES ⁽¹⁾	FY2008			FY2009			Change in Total Exp. 2008/2009	FY2009 Eff. Indirect Cost Rate ⁽²⁾
	Direct	Indirect	Total	Direct	Indirect	Total		
	Costs	Costs	Costs	Costs	Costs	Costs		
Faculty of Arts & Sciences	\$61,803	\$26,665	\$88,468	\$62,204	\$28,095	\$90,299	2.1%	45.2%
School of Engineering and Applied Sciences	20,228	9,842	30,070	19,978	8,790	28,768	(4.3%)	44.0%
School of Dental Medicine	4,196	1,614	5,809	4,076	2,169	6,245	7.5%	53.2%
School of Design	23	4	27	-	-	-	-	-
Graduate School of Education	2,446	739	3,185	2,575	797	3,372	5.9%	30.9%
JFK School of Government	5,939	1,494	7,433	3,829	1,107	4,936	(33.6%)	28.9%
Law School	603	363	966	745	354	1,099	13.8%	47.5%
Medical School	132,806	56,936	189,743	153,443	59,204	212,647	12.1%	38.6%
School of Public Health	163,349	39,051	202,400	167,868	38,116	205,984	1.8%	22.7%
Faculties Subtotal	\$391,393	\$136,709	\$528,102	\$414,719	\$138,631	\$553,350	4.8%	33.4%
Other Departments ⁽³⁾	\$436	\$162	\$598	\$818	\$373	\$1,191	99.3%	45.6%
GRAND TOTAL ⁽⁴⁾	\$391,829	\$136,870	\$528,700	\$415,537	\$139,005	\$554,542	4.9%	33.5%

(1) The Business and Divinity Schools had no federal sponsored research expenditures in these years and are therefore excluded from the table above.

(2) The effective rate is the indirect costs as a percentage of total direct costs.

(3) Includes Arnold Arboretum, Harvard University Art Museums, Joint Center for Housing Studies, President's Initiatives, University Interfaculty Initiatives and FAS Interfaculty Initiatives.

(4) Totals include both Federal and Federal Once-Removed (Federal Once-Removed total cost for FY2008 is \$52,681 and for FY2009 is \$55,444). Totals exclude financial aid and agency funds.

SOURCE: OFFICE FOR SPONSORED PROGRAMS - ANNUAL REPORT

Federal Research by Agency: FY2008 - FY2009

Expressed in thousands of dollars

	FY2008	FY2009	% Change	FY2009 Total as % of Federal Total
Department of Health & Human Services				
National Institutes of Health	\$351,206	\$380,767	8.4%	68.7%
Other DHHS	82,578	82,165	(0.5%)	14.8%
Subtotal	\$433,784	\$462,932	6.7%	83.5%
Department of Defense				
Defense Advanced Research Projects Agency ⁽¹⁾	7,408	9,768	31.9%	1.8%
Department of the Army	6,367	4,784	(24.9%)	0.9%
Department of the Navy	1,668	1,342	(19.5%)	0.2%
Department of the Air Force ⁽²⁾	4,448	5,847	31.5%	1.1%
Subtotal	\$19,891	\$21,741	9.3%	3.9%
National Science Foundation	36,931	38,304	3.7%	6.9%
Department of Energy	8,591	7,436	(13.4%)	1.3%
Nat'l. Aeronautics & Space Administration	9,934	7,209	(27.4%)	1.3%
Environmental Protection Agency	4,230	3,917	(7.4%)	0.7%
Department of Education	2,503	3,035	21.2%	0.5%
Department of State	2,603	2,664	2.3%	0.5%
Department of Veterans Affairs	1,113	1,251	12.4%	0.2%
Agency for International Development	3,626	1,123	(69.0%)	0.2%
Central Intelligence Agency	628	876	39.5%	0.2%
Department of Transportation	1,090	829	(23.9%)	0.1%
Department of Justice	454	484	6.6%	0.1%
Department of Commerce	396	396	0.0%	0.1%
Neighborhood Reinvestment Corporation	240	395	64.6%	0.1%
National Endowment for the Humanities	537	351	(34.6%)	0.1%
Department of Interior	610	334	(45.2%)	0.1%
Department of Housing and Urban Development	289	232	(19.7%)	0.0%
Smithsonian Institution	217	226	4.1%	0.0%
Department of Homeland Security	171	204	19.3%	0.0%
Department of Agriculture	111	166	49.5%	0.0%
Library of Congress	232	28	(87.9%)	0.0%
Department of the Treasury	-	-		0.0%
General Services Administration	4	-	(100.0%)	0.0%
Other Federal Agencies	515	410	(20.4%)	0.1%
GRAND TOTAL⁽³⁾	\$528,700	\$554,542	4.9%	100.0%

(1) Includes Other - Department of Defense.

(2) Includes Air Force Office of Scientific Research

(3) Totals include both Federal and Federal Once-Removed (Federal Once-Removed total cost for FY2008 is \$52,681 and for FY2009 is \$55,444). Totals exclude financial aid and agency funds.

SOURCE: OFFICE FOR SPONSORED PROGRAMS

Non-Federal Sponsored Research: FY2008 - FY2009

Expressed in thousands of dollars

FACULTIES	FY2008			FY2009			Change in Total Exp. 2008/2009	FY2009 Eff. Indirect Cost Rate ⁽¹⁾
	Direct Costs	Indirect Costs	Total Costs	Direct Costs	Indirect Costs	Total Costs		
Faculty of Arts & Sciences	\$22,236	\$2,403	\$24,639	\$29,342	\$2,772	\$32,114	30.3%	9.4%
School of Engineering and Applied Sciences	4,083	820	4,903	5,685	1,859	7,543	53.8%	32.7%
Harvard Business School	4	-	4	6	-	6	70.8%	0.0%
School of Dental Medicine	968	92	1,059	629	86	715	(32.5%)	13.7%
School of Design	126	12	138	347	38	385	178.5%	10.9%
Divinity School	300	29	330	202	20	222	(32.6%)	10.0%
Graduate School of Education	6,599	793	7,393	8,934	983	9,917	34.1%	11.0%
JFK School of Government	15,696	2,148	17,844	18,337	2,647	20,984	17.6%	14.4%
Law School	4,143	270	4,413	4,819	274	5,093	15.4%	5.7%
Medical School	33,471	4,359	37,830	30,755	4,418	35,173	(7.0%)	14.4%
School of Public Health	26,850	3,173	30,023	28,790	3,719	32,509	8.3%	12.9%
Radcliffe Institute for Advanced Study	160	-	160	16	-	16	(90.0%)	0.0%
Faculties Subtotal	\$114,636	\$14,099	\$128,735	\$127,861	\$16,817	\$144,678	12.4%	13.2%
Other Departments ⁽²⁾	\$2,525	\$121	\$2,646	\$5,240	\$614	\$5,854	121.2%	11.7%
GRAND TOTAL ⁽³⁾	\$117,161	\$14,221	\$131,381	\$133,101	\$17,431	\$150,532	14.6%	13.1%

(1) The effective rate is the indirect cost as a percentage of total direct cost.

(2) Includes Harvard University Art Museums, Joint Center for Housing Studies, Nieman Foundation, Villa I Tatti, University Library, Central Admin (FY08 only), Memorial Church (FY08 only), President's Initiatives (FY08 only), University Health Services (FY08 only), University Operations Services (FY08 only), University Interfaculty Initiatives (FY09 only) and FAS Interfaculty Initiatives (FY09 only).

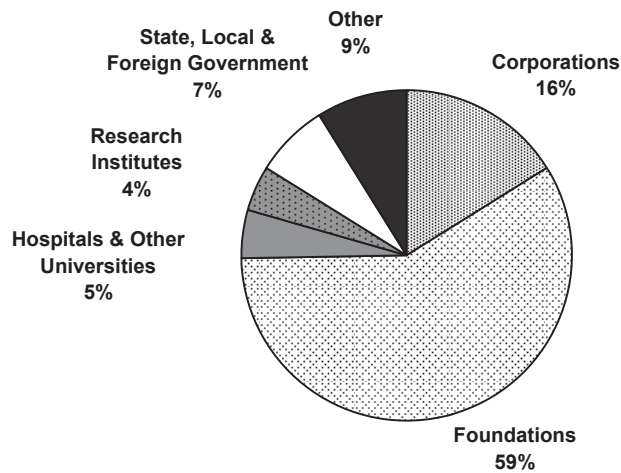
(3) Total excludes financial aid expenditures and agency funds.

SOURCE: OFFICE FOR SPONSORED PROGRAMS - ANNUAL REPORT

Non-Federal Expenditures by Sponsor Type: FY2009

Expressed in thousands of dollars

	Corporations	Foundations	Hospitals & Other Universities	Research Institutes	State, Local, & Foreign Government	Other Sources	Total
Faculty of Arts & Sciences	\$4,461	\$19,818	\$1,804	\$1,630	\$1,060	\$3,343	\$32,114
School of Engineering and Applied Sciences	4,179	2,528	195	423	29	188	7,543
Harvard Business School	-	6	-	-	-	-	6
School of Dental Medicine	186	376	-	-	-	153	715
School of Design	32	170	-	46	51	87	385
Divinity School	-	222	-	-	-	-	222
Graduate School of Education	-	8,773	14	12	261	855	9,917
JFK School of Government	2,010	10,212	296	1,438	4,308	2,721	20,984
Law School	-	4,801	-	136	-	156	5,093
Medical School	8,152	19,553	1,458	1,414	1,764	2,833	35,173
School of Public Health	4,298	17,489	2,804	1,432	3,556	2,929	32,509
Radcliffe Institute for Advanced Study	-	16	-	-	-	-	16
Faculties Subtotal	\$23,318	\$83,965	\$6,571	\$6,531	\$11,029	\$13,264	\$144,678
Other Departments ⁽¹⁾	\$1,020	\$3,994	\$748	-	\$91	-	\$5,854
GRAND TOTAL ⁽²⁾	\$24,338	\$87,959	\$7,319	\$6,531	\$11,120	\$13,264	\$150,532



(1) Includes Harvard University Art Museums, Joint Center for Housing Studies, Nieman Foundation, Villa I Tatti, University Interfaculty Initiatives, FAS Interfaculty Initiatives and University Library.

(2) Total excludes financial aid expenditures and agency funds.

SOURCE: OFFICE FOR SPONSORED PROGRAMS

Historical Funding of Research by Sponsor

Expressed in thousands of dollars

Federal (Prime and Once-Removed)

	Fiscal Year				
	2005	2006	2007	2008	2009
National Institutes of Health	\$354,996	\$362,878	\$344,832	\$351,206	\$380,767
Other DHHS	46,193	41,560	66,529	82,578	82,165
National Science Foundation	38,157	38,162	35,886	36,931	38,304
Department of Defense	21,911	23,059	19,451	19,891	21,741
Department of Energy	12,901	11,747	12,037	8,513	7,436
Nat'l. Aeronautics & Space Administration	8,367	9,324	10,170	9,934	7,209
Agency for International Development	5,578	7,598	5,963	3,626	1,123
Environmental Protection Agency	5,972	5,983	5,011	4,230	3,917
Department of Education	6,890	6,242	4,157	2,503	3,035
Department of State	1,610	1,796	1,658	2,603	2,664
Department of Commerce	1,674	1,164	1,258	396	395
Other ⁽¹⁾	3,617	4,178	4,305	6,289	5,786
Federal Total	\$507,865	\$513,692	\$511,255	\$528,700	\$554,542

Non-Federal

	2005	2006	2007	2008	2009
Foundations	\$78,119	\$74,129	\$72,906	\$81,456	\$91,836
State, Local & Foreign Government	12,797	12,154	13,142	10,585	11,120
Corporations	11,058	9,147	15,588	19,786	24,339
Research Institutes	4,677	6,773	3,825	4,801	6,532
Other Sources	6,763	5,195	8,879	9,144	9,386
Hospitals & Other Universities	2,061	2,868	4,537	5,609	7,319
Non-Federal Total	\$115,475	\$110,266	\$118,878	\$131,381	\$150,532
GRAND TOTAL ⁽²⁾	\$623,340	\$623,958	\$630,133	\$660,081	\$705,074

Growth in Sponsored Projects

Expressed in millions of dollars

Fiscal Year	Expenditure Actual \$	% Change	Expressed as FY09 \$	% Change in FY09 \$
2005	\$623.3	-	\$698.0	-
2006	624.0	0.1%	673.1	(3.6%)
2007	630.1	1.0%	662.6	(1.6%)
2008	660.1	4.8%	669.4	1.0%
2009	\$705.1	6.8%	\$705.1	5.3%

(1) Agencies listed on this exhibit are based on FY2009 expenditures. Information on agencies in prior years can be obtained from the Office for Sponsored Programs.

(2) Total excludes financial aid expenditures and agency funds.

SOURCE: OFFICE FOR SPONSORED PROGRAMS - ANNUAL REPORT

The Harvard University Library System

The Harvard University Library provides scholars and students access to the world of knowledge and expertise to support its use in research, teaching, and learning. It is the largest academic library in the world.

Harvard's extensive collections, which date back to 1638, include over 16 million volumes, approximately 8 million photographs, and millions of manuscripts, as well as recordings, maps, ephemera, and an exploding number of digital resources. Most libraries require a Harvard ID for admittance.

The "Harvard Libraries" Web Site

Access library catalogs, e-resources, research tools and guides, library information, and an FAQ for visitors on the "Harvard Libraries" web site: <http://lib.harvard.edu>.

The HOLLIS Discovery System

HOLLIS—the Harvard Online Library Information System—is a simple, intuitive interface for discovering library resources. Located at <http://discovery.lib.harvard.edu>, HOLLIS now reflects a new generation of creative thinking about searching on the web as it differs from searches in traditional library catalogs. A prior version of HOLLIS—"HOLLIS Classic"—remains in place at <http://holliscatalog.harvard.edu>. Both can be accessed from the Harvard Libraries portal at <http://lib.harvard.edu>.

Locating Digital Materials at Harvard

While access to many licensed e-resources, such as journals, requires a Harvard ID and PIN, many other digital objects—photographs, original documents, musical scores, prints, drawings, historical maps, books, legal transcripts, diaries, manuscripts, and more—are open to all Internet users. Here are some places to start:

- **E-Research @ Harvard Libraries** (<http://e-research.lib.harvard.edu>) is the University's online system for searching and finding e-journals and e-resources of many kinds.
- Use the **HOLLIS catalog** (<http://discovery.lib.harvard.edu>) to locate not only digital collections, but some individual digital objects as well. Look for "Internet Links" in HOLLIS records or choose "Digital Resources" when you begin your HOLLIS search.
- **VIA**, Harvard's Visual Information Access catalog (<http://via.harvard.edu>), provides links to nearly 400,000 individual images.

University Library Programs

The University Library operates six strategic, University-wide programs that support the Library's mission. These include:

- The **Harvard Depository** for high-density, offsite storage.
- The **Harvard University Archives**, including Records Management Services.
- The **Office for Information Systems**, providing integrated and coherent access to research materials and resources.
- The **Office for Scholarly Communication**, with its new open-access repository, known as DASH.
- The **Open Collections Program**, creating subject-specific, web-accessible collections online.
- The **Weissman Preservation Center**, where the University cares for the Library's greatest treasures.

Summary of Growth and Expenditures of the Harvard University Library, 2008-2009

	Collections			Expenditures (in \$000's)					
	Increase		Volumes & Pamphlets	Salaries & Wages	Cost of Retirement and Health Programs	Books and Other Library Materials	Binding	Other Library Costs	Total Expenditures
	Gross	Net							
University Library (HUL) ⁽¹⁾	5,960	5,960	132,371	\$7,964	\$3,452	\$1,357	\$7	\$11,665	\$24,443
Faculty of Arts & Sciences									
Central Collections	279,512	247,404	10,362,295	32,053	13,856	19,426	586	22,199	88,118
House Libraries	30	30	219,090	62	-	1	-	10	73
Departmental & Divisional Libraries	2,762	2,689	334,774	609	227	2,024	12	161	3,033
Special & Research Libraries	15,619	14,680	1,174,485	3,639	1,304	2,251	61	1,325	8,581
Graduate/Profess. School Libraries	45,167	31,484	4,333,987	21,134	8,692	10,237	358	9,966	50,387
Less Duplication	-	-	-	-	-	-	-	(7,641)	(7,641)
University Library Totals	349,050	302,247	16,557,002	\$65,459	\$27,530	\$35,296	\$1,023	\$37,684	\$166,994

(1) Expenditures include the Harvard University Archives (which includes records management services), the Office for Information Systems, the Weissman Preservation Center and Special Collections Conservation Lab, the Open Collections Program, the Office for Scholarly Communication, and the Harvard Depository.

SOURCE: HARVARD UNIVERSITY LIBRARY

Library Collections: FY2009

	Increase FY2009		Volumes & Pamphlets FY2009
	Gross	Net	
UNIVERSITY LIBRARY			
Harvard University Archives	5,708	5,708	131,045
Weissman Preservation Center	252	252	1,326
LIBRARIES OF THE FACULTY OF ARTS AND SCIENCES			
<i>HARVARD COLLEGE LIBRARY</i>			
Cabot, Godfrey Lowell, Science Library	3,206	1,770	281,019
Fine Arts Library	16,749	16,688	373,688
Fung Library	2,528	2,528	66,218
Harvard–Yenching Library	40,075	40,075	1,262,462
Houghton Library	4,155	4,105	498,074
Lamont Library	9,301	(21,121)	553,570
Loeb, Eda Kuhn, Music Library	10,182	10,082	286,699
Tozzer Library	4,878	4,839	264,815
Widener, Harry Elkins, Memorial Library	188,438	188,438	6,775,750
<i>HOUSE LIBRARIES</i>	30	30	219,090
<i>DEPARTMENTAL AND SPECIAL LIBRARIES ⁽¹⁾</i>	2,762	2,689	334,774
SPECIAL, OFFICE, AND OTHER RESEARCH LIBRARIES			
Wolbach, John G., Library (Astrophysics)	1,624	1,549	86,402
Biblioteca Berenson	3,619	3,489	147,094
Botany Libraries (six total)	1,451	1,444	292,341
Career Reference Library	182	(188)	4,935
Mayr, Ernst, Library of the Museum of Comparative Zoology	2,206	2,206	308,510
Development Office Library	7	7	5,359
Dumbarton Oaks Research Library	4,056	4,003	221,129
European Studies, Center for, Library	277	122	13,628
Grossman Library for University Extension	323	189	5,287
Harvard Forest Library	714	714	14,560
Hellenic Studies, Center for, Library	936	936	60,365
Gibb, Hamilton A. R., Islamic Seminar Library	11	11	7,693
Nieman Foundation/Kovach Collection (Journalism)	131	131	4,164
Parry, Milman, Collection of Oral Literature ⁽²⁾	0	0	0
Harvard University Property Information Resource Center	7	7	1,224
Ukrainian Research Institute Reference Library	75	60	1,794
LIBRARIES OF THE OTHER GRADUATE AND PROFESSIONAL FACULTIES			
Harvard Business School: Baker Library	230	158	645,997
Harvard Design School: Frances Loeb Library	3,700	3,138	301,573
Harvard Divinity School: Andover–Harvard Theological Library	6,682	6,240	505,737
Harvard Graduate School of Education: Monroe C. Gutman Library	5,241	4,195	216,415
Harvard Law School Library	13,003	12,912	1,801,257
John F. Kennedy School of Government Library	2,255	377	58,229
Belfer Center for Science and International Affairs	0	0	5,200
Radcliffe Institute for Advanced Study: Arthur and Elizabeth Schlesinger Library on the History of Women in America	5,024	5,024	98,830
Schools of Medicine, Public Health, and Dental Medicine Francis A. Countway Library of Medicine	8,970	8,620	695,415
Henry Coe Meadow Library (New England Primate Research Center)	62	(9,180)	5,334
TOTAL UNIVERSITY COLLECTION	349,050	302,247	16,557,002

(1) The FAS Departmental libraries include the African American Studies, Franklin and Wendy Raines, Library; Celtic, Fred N. Robinson, Seminar Library; Chemistry and Chemical Biology Library; Classics: Herbert Weir Smyth Classical Library; Engineering and Applied Sciences, Gordon McKay, Library; English: Child Memorial Library; History Departmental Library; History of Science Library; Linguistics Library; Mathematics, George David Birkoff, Library; Medieval Studies Library; Near Eastern Languages and Civilizations Library; Paleography Library; Philosophy, Robbins Library of; Physics Research Library; Sanskrit Library; Social Relations/Sociology Library;

(2) In lieu of published volumes and pamphlets, the Milman Parry Collection includes manuscripts and recordings of oral literature.

Physical Plant: FY2009

The University owns and operates more than six hundred buildings of varying sizes and characteristics, spread over a wide geographic area. They encompass approximately 25.8 million gross square feet of space. The physical plant provides living space for students and faculty, research facilities to advance our base of knowledge, classroom and library spaces for the dissemination of knowledge, and space for administrative and support services.

Location ⁽¹⁾	Acres	Gross Square Footage ⁽²⁾ of Buildings (in 000's)	Principal Activity on Site
Cambridge, MA	210	15,504	Main Campus
Boston, MA	22	3,182	Medical & Dental Schools; School of Public Health
Boston (Allston)	359	5,165	Business School; University Publisher; Athletics, Other
Boston (Jamaica Plain)	238	54	Arnold Arboretum
Watertown MA	14	1,118	Arsenal Buildings
Weston, MA	69	11	Case Estates (Arnold Arboretum)
Somerville, MA	2	28	Affiliated Housing
Medford, MA	1		
Bedford, MA	79	11	Concord Field Station
Carlisle, MA	69		Concord Field Station
Concord, MA	605		Field Station (Museum of Comparative Zoology)
Marlborough, MA	43		Animal Research Center (NERPC)
Southborough, MA	87	308	Harvard Depository
Petersham, MA	2857	73	Harvard Forest (Forestry, Botany)
Hamilton, MA	98		Harvard Forest
Phillipston, MA	204		Harvard Forest
Royalston, MA	57		Harvard Forest
Harvard, MA	37	19	Agassiz Cottage (Observatory)
Shrewsbury, MA	6	16	Artemas Ward Homestead (Museum)
Kittery Point & Sutton Island, ME	2	6	Howells Memorial & Kendall Houses
Ledyard, CT	n/a	21	Red Top Crew Quarters
Washington, DC	17	225	Dumbarton Oaks & Center for Hellenic Studies
Florence & Fiesole, Italy	n/a	94	Villa I Tatti (Center for Italian Renaissance Studies)
Sardis, Turkey	n/a	6	HUAM Archaeological Site
TOTAL	5,076	25,842	

(1) In addition to locations listed above, Harvard has numerous smaller holdings.

(2) As of FY2007, square footage figures are reported according to National Center for Education Statistics Postsecondary Education Facilities Inventory and Classification Manual (FICM) standards. Therefore, values may differ from previous years.

SOURCE: HARVARD REAL ESTATE SERVICES

Physical Plant: FY2009

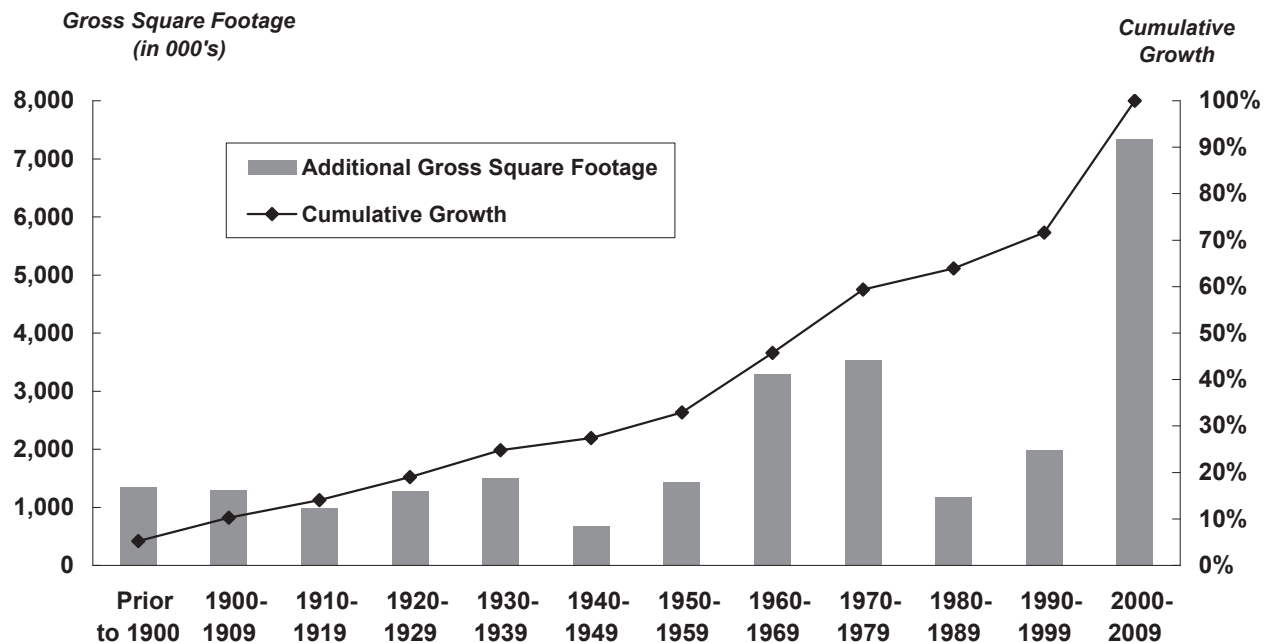
Building Ownership

	Number of Buildings	Gross Square Footage	
		of Buildings (in 000's)	As a % of Total
FAS	259	9,255	35.8%
Engineering	15	337	1.3%
Business	33	1,554	6.0%
Dental	2	102	0.4%
Design	2	180	0.7%
Divinity	7	189	0.7%
Education	6	209	0.8%
Government	5	275	1.1%
Law	6	926	3.6%
Medical	21	2,529	9.8%
Radcliffe	26	306	1.2%
Public Health	7	589	2.3%
Real Estate	223	7,752	30.0%
Central Administration	50	1,641	6.3%
TOTAL	662	25,842	100.0%

Primary Uses

	Gross Square Footage	
	of Buildings (in 000's)	As a % of Total
Residential/Dormitory	7,503	29.0%
Lab/Studio	4,951	19.2%
Office/Classroom	4,783	18.5%
Commercial	3,111	12.0%
Support	1,764	6.8%
Library	1,600	6.2%
Assembly/Museum	1,150	4.5%
Athletic	862	3.3%
Health Care	118	0.5%
TOTAL	25,842	100.0%

Additions to the Physical Plant



SOURCE: HARVARD REAL ESTATE SERVICES

Summary of Environmental Performance at Harvard

Greenhouse Gas Emissions from Harvard University by Location: FY2009**

	2009 Baseline Buildings Emissions (MTCDE) ⁽¹⁾	% Change Baseline Emissions (MTCDE) FY06-09	2009 Total Emissions (MTCDE)	% Change Total Emissions (MTCDE) FY06-09
Arts and Sciences	76,100	-16.0%	94,200	2.5%
Engineering	5,200	-10.9%	5,200	-10.9%
Business	16,000	-29.0%	16,000	-28.9%
Design	1,800	-4.5%	1,800	-4.5%
Divinity	1,200	-15.8%	1,200	-15.8%
Education*	2,200	8.5%	2,300	11.9%
Government	2,300	-15.9%	2,300	-15.4%
Law	7,300	-17.5%	7,800	-14.8%
Radcliffe*	2,000	3.3%	2,000	3.3%
Public Health*	13,100	-13.0%	13,100	-12.8%
Medical School (Including Dental)*	66,500	-8.1%	67,000	-7.4%
HRES/UOS/Others ⁽²⁾	71,500	-14.3%	76,800	-9.1%
TOTAL - North America Campus only	264,900	-14.1%	289,500	-6.9%

The 2009 Harvard University Greenhouse Gas Inventory Report represents an adjusted methodology adopted through the GHG Reduction Goal planning process.

This inventory, with the revised baseline, represents the full breadth of the University's GHG footprint in North America. The inventory covers more than 26 million square feet of space and reports on all of the critical Kyoto protocol gases from both direct (Scope 1) and indirect (Scope 2) sources.

Harvard's emissions are reported annually in two ways, 1) FY06 vs FY09 for just our Baseline Buildings (e.g., Buildings that have remained constant since FY 2006) and 2) FY06 vs FY09 for Total Campus (including any growth in square footage or usage). The data at the left indicates a 6.9% decline in Harvard's overall GHG Emissions since Fiscal Year 2006, including growth, from a Fiscal Year 2006 baseline, with a 14.1% decline in emissions if you exclude growth.

The graph below illustrates the following emissions: Direct (Scope 1) Emissions, including emissions from campus operations and energy sources owned by Harvard; and Indirect (Scope 2) Emissions, including emissions from purchased energy such as chilled water, steam and electricity.

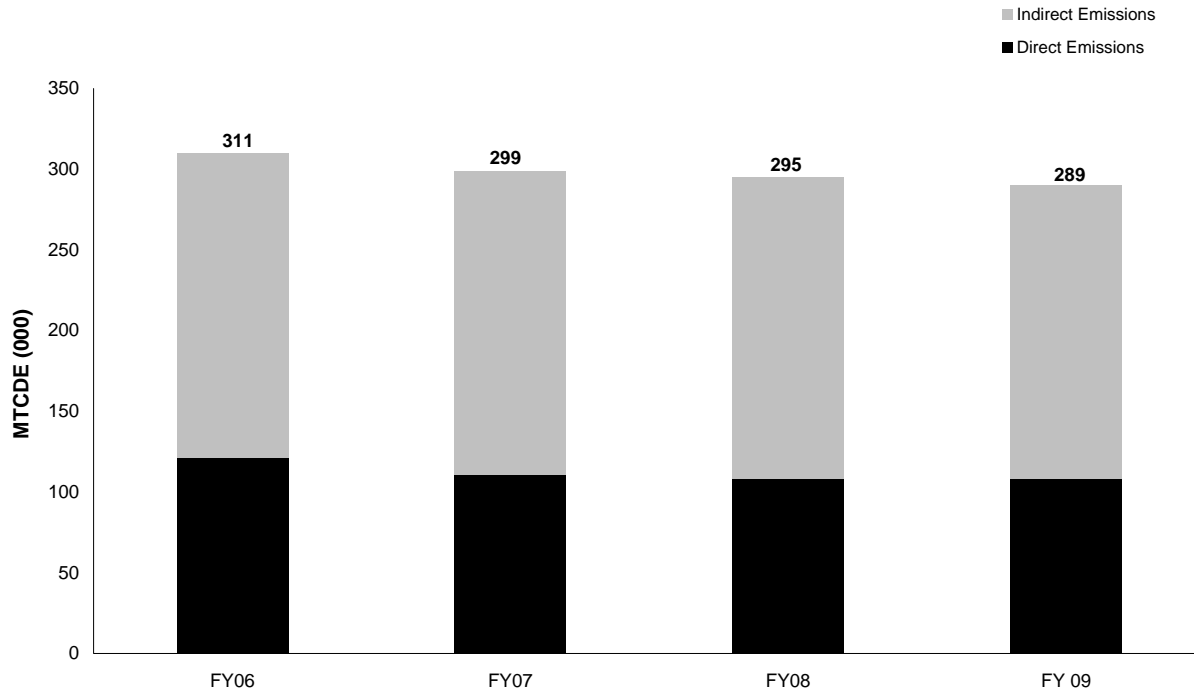
Adjustments to these emissions associated with Harvard's use of biofuels, biomass, Carbon uptake associated with the 3,500 acre Harvard Forest and Renewable Energy Certificates have not been made.

Additional GHG Inventory Reporting information can be found at www.green.harvard.edu/reporting.

* Schools include buildings that are not on the central utility plant and therefore do not see the benefits of emissions reductions associated with central utilities.

Harvard University Greenhouse Gas Emissions: FY2006 - FY2009 ⁽³⁾

Expressed in thousands of MTCDE



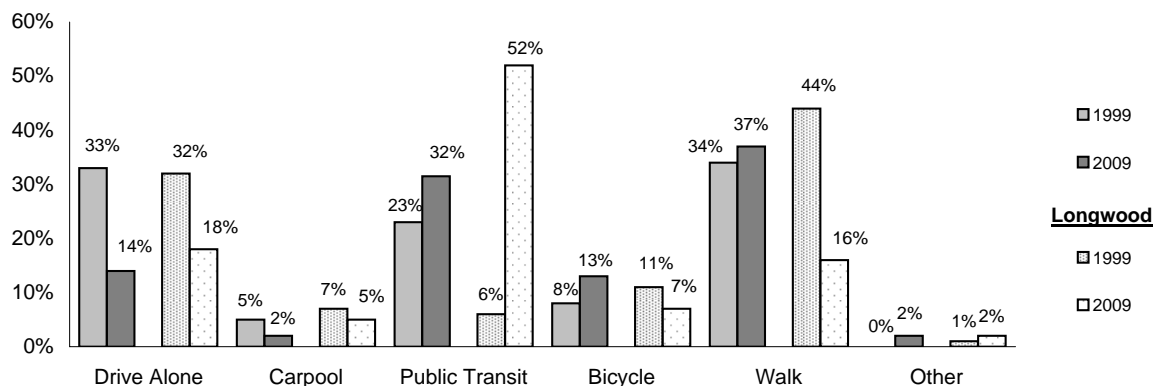
(1) MTCDE: Metric Tons of Carbon Dioxide Equivalent

(2) HRES refers to Harvard Real Estate Services and UOS refers to University Operations Services.

(3) Emission for FY2006 through FY2009 have been restated based on the new methodology being followed. All North America Campuses are included.

SOURCE: HARVARD OFFICE FOR SUSTAINABILITY AND ENVIRONMENTAL HEALTH AND SAFETY

Commute Trends: FY1999-FY2009



Cambridge Commute Type data is from UOS, Transportation Services Department.
 Longwood Commute Data is from the Harvard Medical School Parking Office.

Green Campus Loan Fund: FY2003 - FY2009

The Green Campus Loan Fund is a revolving \$12 million fund that provides capital for high performance campus design, operations, maintenance and occupant behavior projects. Project eligibility guidelines state that projects must reduce the University's environmental impacts and meet specific payback requirements. Additional information can be found at green.harvard.edu/loan-fund.

Annual Green Campus Loan Fund Estimated Performance for FY09 Approved Projects

Environmental: FY09

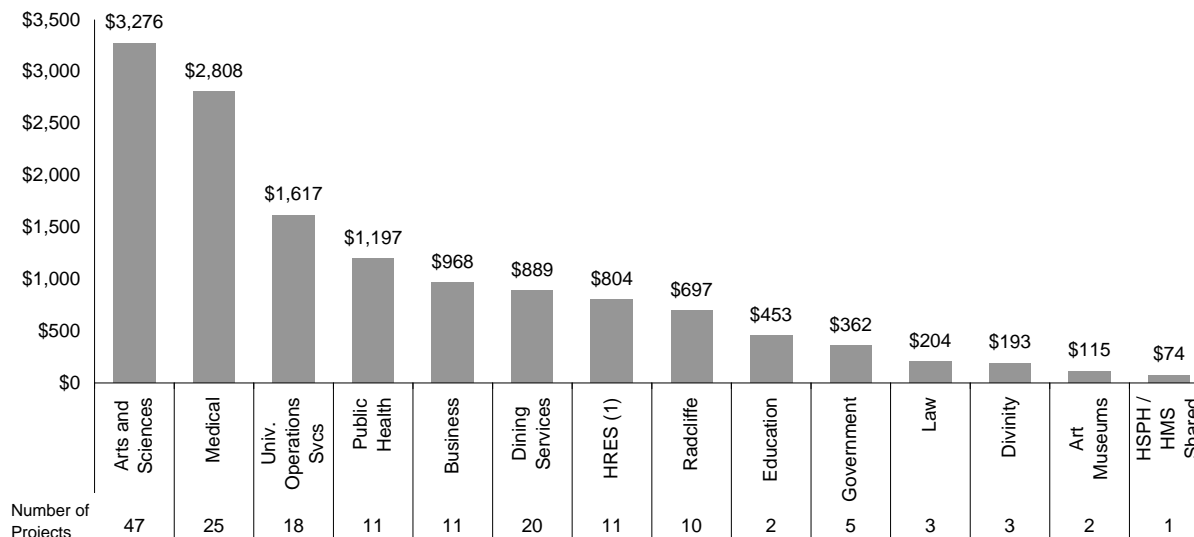
Estimated GHG Savings (MTCDE) 1,206

Financial: FY09 Approved Projects

Estimated Annual \$ Savings \$524,281
 Estimated Aggregate Return on Investment (ROI) 32%
 Estimated \$ Amount of Loans \$1,644,809

Total Amount Loaned per Faculty: FY2003 - FY2009*

Expressed in thousands of dollars



* Total amount loaned FY2002 - FY2009 is \$15,055,775

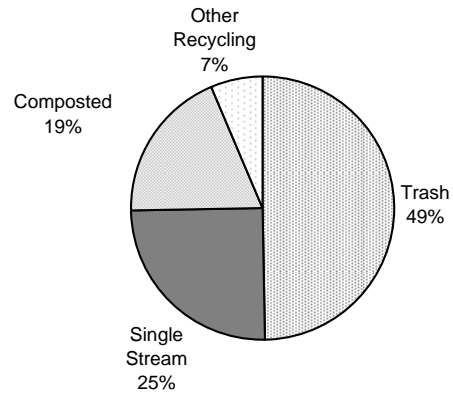
(1) HRES refers to Harvard Real Estate Services.

SOURCE: HARVARD OFFICE FOR SUSTAINABILITY

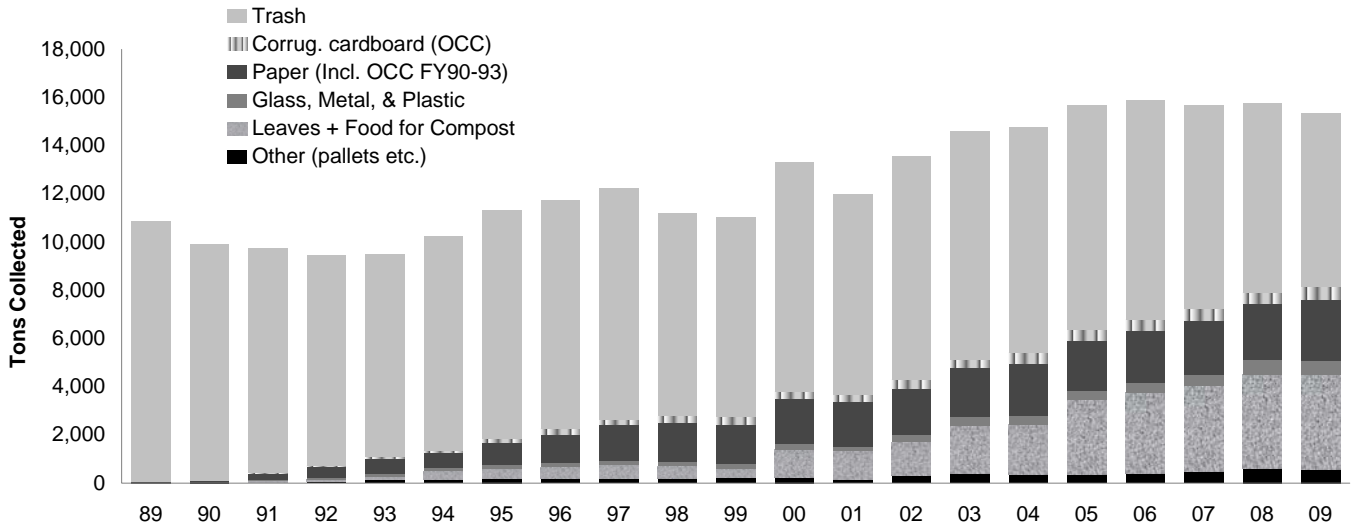
Waste and Recycling: FY2009

	Recycling Rate	Trash (in tons)
Arts and Sciences	47%	3,143
Engineering	60%	49
Business	58%	588
Design	65%	63
Divinity	70%	12
Education	46%	74
Government	34%	179
Law	50%	313
Radcliffe	50%	98
Medical	43%	1,089
Public Health & Dental	56%	285
HRES ⁽¹⁾	38%	860
Libraries	49%	129
Museums	78%	14
Other: UOS, UIS, HU Press	56%	590
TOTAL	50%	8,230

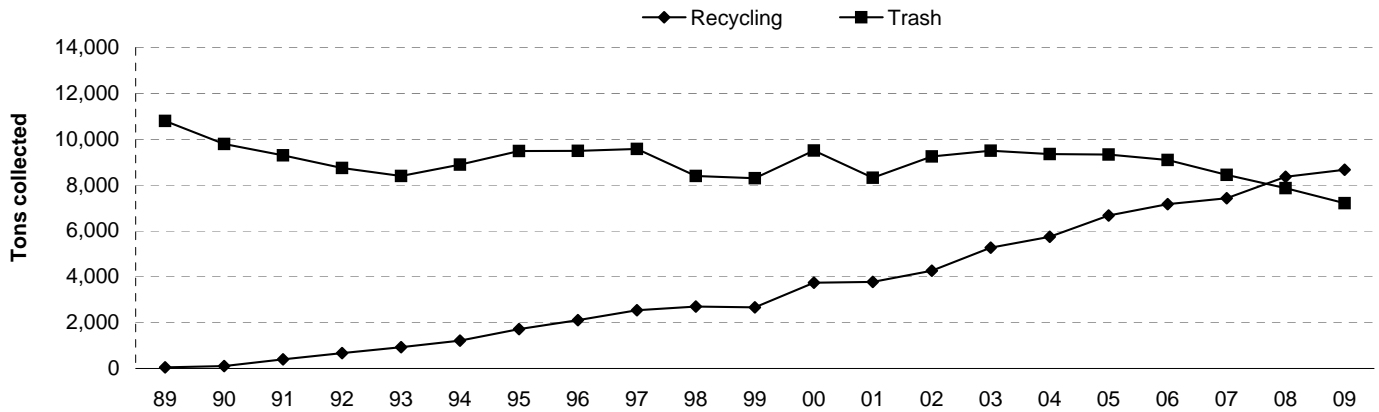
Harvard University Refuse: FY2009



Harvard University Refuse: FY1989 - FY2009



Harvard University Trash and Recycling: FY1989 - FY2009



(1) HRES refers to Harvard Real Estate Services, includes facilities in Watertown that are leased to external tenants.

SOURCE: HARVARD OFFICE FOR SUSTAINABILITY AND UNIVERSITY OPERATIONS SERVICES

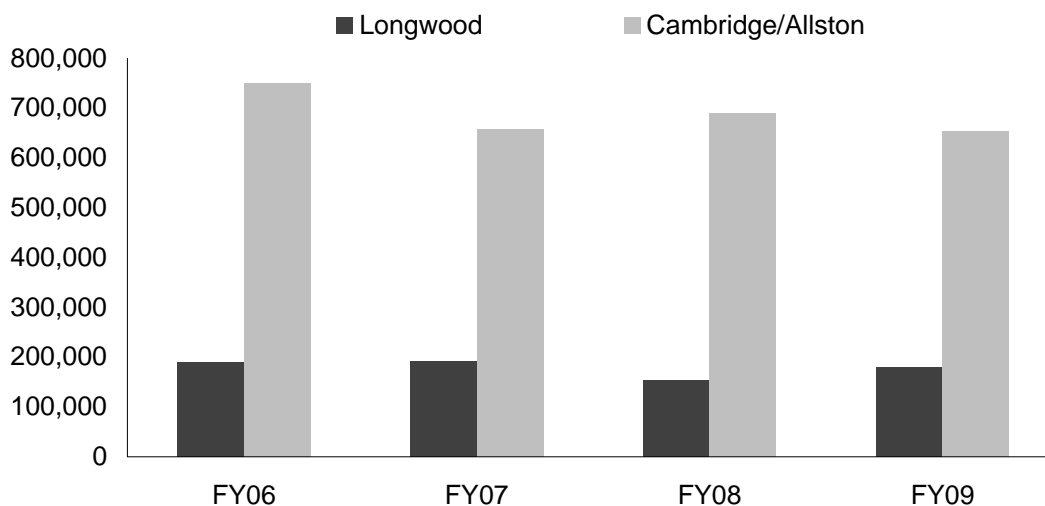
Solid Waste and Recycling data for Cambridge and Allston was reported by UOS, Solid Waste and Recycling Department.

Solid Waste and Recycling data for the Longwood campus was reported by the HMS and HSPH Operations Departments.

Water Use in Cubic Feet (CCF): FY2009

	Water Use (CCF)	Per 1,000 Sq Ft	% Change Total Water Use (CCF) FY08-09
Arts and Sciences	235,500	24	1%
Engineering	4,500	13	1%
Business	68,000	44	15%
Design	1,500	8	-4%
Divinity	3,100	16	-6%
Education	3,500	12	-24%
Government	8,800	33	8%
Law	21,000	16	-16%
Radcliffe	2,900	10	n/a
Medical (including Dental)	160,400	53	3%
Public Health	19,200	26	n/a
HRES ⁽¹⁾	213,500	n/a	4%
Other	91,000	n/a	n/a
TOTAL	832,900		

Water Use: FY2006 - FY2009



Cambridge & Allston data is from the University Operations Services Utility Reports.

Harvard Medical School and Dental School data is reported by HMS Facilities Operations.

Harvard School of Public Health data is reported by HSPH Facilities Operations.

(1) HRES refers to Harvard Real Estate Services.

SOURCE: HARVARD OFFICE FOR SUSTAINABILITY AND UNIVERSITY OPERATIONS SERVICES

Leadership in Energy and Environmental Design (LEED) Projects as of FY2009

LEED is a rating system for green buildings and provides a nationally accepted third-party verification that a building project meets the highest performance standards.

LEED Certified: The project has been third-party certified to meet the US Green Building Council LEED Standards.

LEED Registered: The project has registered for LEED Certification, but is not yet verified.

As of June 31, 2009, Harvard had 18 projects certified and 42 projects registered. Visit the OFS website for an up to date list of LEED projects at Harvard: <http://green.harvard.edu/theresource/>.

Registered LEED Projects by Building Type

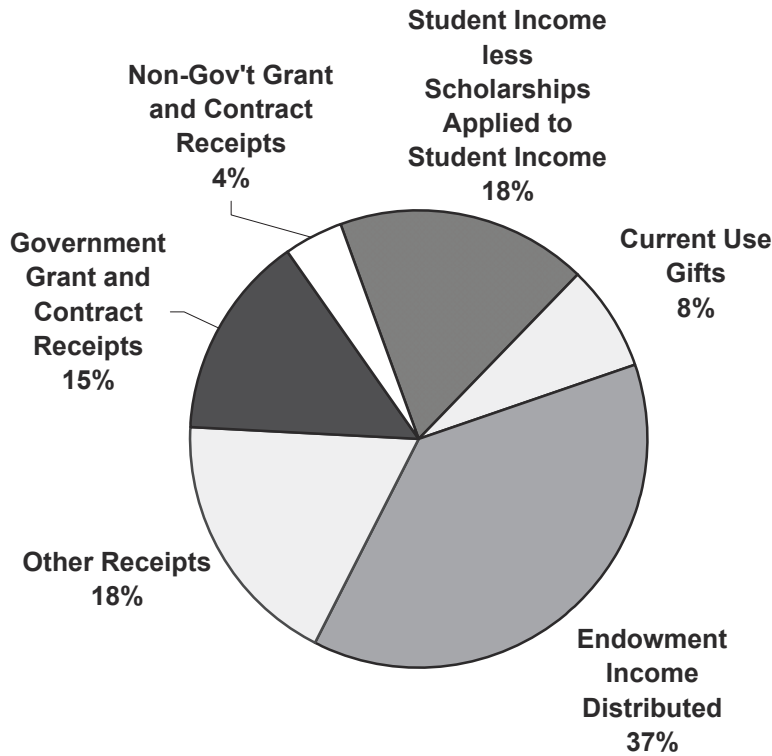
Project Name	Gross Sq Footage
Arts and Sciences	
Child Care	12,000
Dormitory	57,869
Laboratory	74,035
Labs/Office	3,300
Library	25,000
Lockerm/Office	5,150
Museum	1,497
Office	14,645
Total	193,496
Engineering and Applied Sciences	
Office	2,050
Allston	
Labs/Office	1,000,000
Arnold Arboretum	
Labs/Office	45,000
Art Museum	
Museum	132,310
Storage	66,101
Total	198,411
Business	
Chapel	5,900
Gymnasium	118,600
Housing	35,127
Total	159,627
Divinity	
Mixed use	26,715
Education	
Classroom	17,474
Harvard Real Estate Services	
Office	7,730
Law	
Classrm/Office	525,461
Library	
Storage	29,187
Medical School	
Laboratory	28,180
Public Health	
Office	2,400
Radcliffe	
Office	42,732
Harvard University Employees Credit Union	
Office	6,826

Certified LEED Projects

Project Name	Building Type	Level	Gross Sq Footage
American Repertory Theatre			
Two Arrow Street	Theater/Office	Certified	36,080
Business			
Aldrich Hall	Classroom	Silver	114,414
Gallatin Hall	Housing	Gold	100,000
Hamilton Hall	Housing	Gold	48,000
McCollum Hall	Classroom	Gold	7,940
Wyss Hall	Office	Gold	5,000
Dining Services			
Mather Dunster	Kitchen/ Servery	Silver	15,870
Harvard Real Estate Services/University Information Systems			
60 Oxford Street	IT	Certified	93,923
Harvard Real Estate Services			
10 Akron Street	Housing	Gold	180,000
2 Grant Street	Housing	Platinum	1,000
5 Cowperthwaite Street	Housing	Gold	208,343
One Western Avenue	Housing	Silver	229,000
Library			
90 Mount Auburn Street	Library	Gold	30,405
Law			
125 Mt. Auburn, 2nd Fl.	Office	Silver	5,620
Griswald	Office	Platinum	1,655
Public Health			
Landmark Center	Office	Certified	42,000
Radcliffe			
Schlesinger Library	Library	Certified	24,000
University Operations Services			
Blackstone South	Office	Platinum	40,000

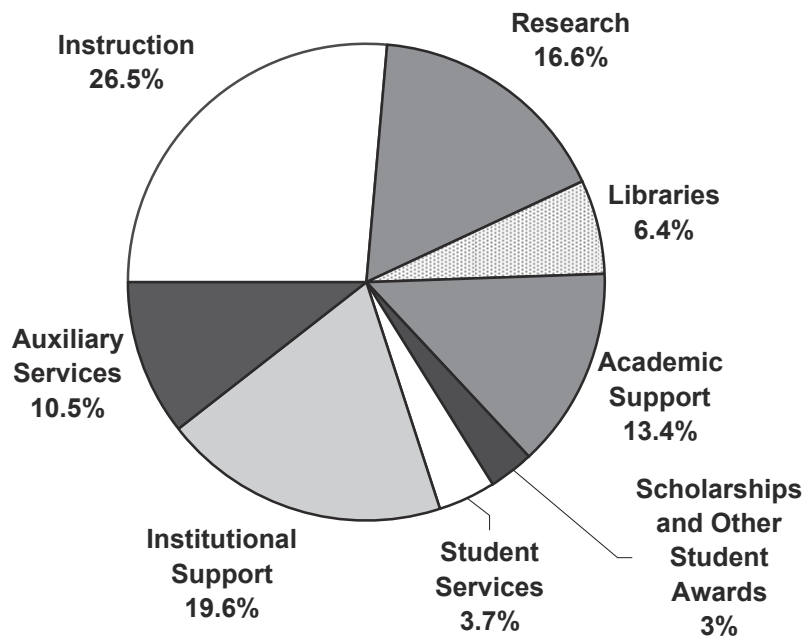
Total University Income and Expenses for Fiscal Year Ended June 30, 2009
Expressed in thousands of dollars

Total Income: \$3,827,564



Total Expenses: \$3,756,071

(scholarship item excludes \$302.4 million in scholarships applied to student income)



SOURCE: HARVARD UNIVERSITY FINANCIAL REPORT

Departmental Operating Expenses Year Ended June 30, 2009

Expressed in thousands of dollars

	Salaries and Wages	Employee Benefits	Scholarships/ Student Awards
Faculty of Arts & Sciences			
Faculty of Arts & Sciences	\$350,177	\$106,262	\$220,878
Division of Continuing Education	24,901	6,259	8,630
FAS Museums	12,581	5,067	1,391
Total Faculty of Arts & Sciences	\$387,659	\$117,588	\$230,899
School of Engineering & Applied Sciences	\$36,309	\$9,469	\$6,836
School of Business Administration	162,829	49,057	32,680
School of Dental Medicine	12,941	4,367	1,787
Graduate School of Design	16,819	5,094	8,760
Divinity School	15,219	5,053	9,712
Graduate School of Education	34,930	11,638	11,381
School of Government	59,787	20,969	21,404
Law School	71,573	22,467	22,452
Medical School	166,873	55,639	51,592
Radcliffe Institute for Advanced Study	6,968	2,807	3,720
School of Public Health	90,791	30,685	17,181
Other Faculties Subtotal	\$675,039	\$217,245	\$187,505
Total Faculties	\$1,062,698	\$334,833	\$418,404
Arnold Arboretum	5,881	2,297	92
Harvard University Art Museums	11,653	4,955	20
Joint Center for Housing Studies	1,039	459	21
Nieman Foundation	1,525	649	1,825
Villa I Tatti	3,581	1,283	1,387
Other Academic Departments Subtotal	\$23,679	\$9,643	\$3,345
Service Departments	\$131,623	\$53,772	\$745
Memorial Church	\$1,263	\$490	-
Central Administration ⁽²⁾	\$165,363	\$57,371	\$2,354
TOTAL UNIVERSITY EXPENSES	\$1,384,626	\$456,109	\$424,848

(1) Includes expense credits and transfers.

(2) Includes Harvard University Library and other University funds.

SOURCE: OFFICE OF THE CONTROLLER

Less: Financial Aid Applied against Income	Equipment and Supplies	Space and Occupancy	Depreciation	Other Expenses ⁽¹⁾	Total Expenses
(\$172,838)	\$56,063	\$180,167	\$101,021	\$144,008	\$985,738
(8,377)	1,356	2,678	852	18,094	54,393
(13)	2,633	3,570	1,158	6,543	32,930
(\$181,228)	\$60,052	\$186,415	\$103,031	\$168,645	\$1,073,061
(\$4,986)	\$5,958	\$7,464	\$7,966	\$10,129	79,145
(26,320)	10,625	31,977	26,654	142,475	429,977
(1,479)	3,340	4,288	1,890	6,129	33,263
(7,509)	1,653	3,187	740	8,601	37,345
(8,035)	1,057	2,931	1,584	5,573	33,094
(8,895)	2,453	5,985	682	20,839	79,013
(14,203)	6,097	13,653	2,890	29,032	139,629
(16,330)	6,583	17,883	7,515	45,736	177,879
(24,223)	41,042	85,315	46,234	160,184	582,656
(20)	1,085	2,133	1,994	3,492	22,179
(9,066)	20,657	29,836	7,622	141,425	329,131
(\$121,066)	\$100,550	\$204,652	\$105,771	\$573,615	\$1,943,311
(\$302,294)	\$160,602	\$391,067	\$208,802	\$742,260	\$3,016,372
(20)	636	1,375	316	2,955	13,532
-	2,618	3,156	1,929	5,342	29,673
-	39	170	-	407	2,135
-	131	556	39	1,574	6,299
-	949	1,149	208	2,217	10,774
(\$20)	\$4,373	\$6,406	\$2,492	\$12,495	\$62,413
-	\$51,020	\$6,560	\$65,017	\$48,554	\$357,291
-	\$112	\$767	\$84	\$447	\$3,163
(\$55)	\$8,297	\$40,271	\$12,055	\$31,176	\$316,832
(\$302,369)	\$224,404	\$445,071	\$288,450	\$834,932	\$3,756,071

Market Value of Endowment Funds as of June 30, 2009

Expressed in millions of dollars, in descending order

	Endowment Market Value	Market Value % of Total
Arts and Sciences ⁽¹⁾	\$11,076	42.5%
Medical	3,104	11.9%
Business	2,099	8.1%
Other Academic Departments ⁽²⁾	1,931	7.4%
President's Funds	1,733	6.7%
Law	1,356	5.2%
Public Health	914	3.5%
Government ⁽³⁾	802	3.1%
Engineering and Applied Sciences	730	2.8%
Divinity	459	1.8%
Radcliffe Institute for Advanced Study	441	1.7%
Education	395	1.5%
Design	314	1.2%
Auxiliary Departments ⁽⁴⁾	279	1.1%
Central Administration	245	0.9%
Dental	157	0.6%
Total Endowment	\$26,035	100%

(1) Arts and Sciences includes: Continuing Education, College Library, FAS Museums, GSAS, Athletics, College Life and Student Services, and Dumbarton Oaks.

(2) Other Academic Departments include: Arnold Arboretum, Harvard University Art Museums, Interfaculty Initiatives, Nieman Foundation, and Villa I Tatti.

(3) Government includes Institute of Politics.

(4) Auxiliary Departments include: Faculty Club, Health Services, Memorial Church, Operations, Real Estate Services, University Library, and University Press.

NOTE: Starting in FY07, Pledge Balances and Interests in Perpetual Trusts held by Others have been included in school totals. Therefore, line items may not be comparable to prior years.

SOURCE: HARVARD ANNUAL FINANCIAL REPORT AND HARVARD DATA WAREHOUSE

Endowment Performance: FY1979 - FY2009

Fiscal Year	Market Value at End of Year (in 000's)	Return ⁽¹⁾	Spending Rate ⁽²⁾	Endowment Income as % of University Operating Revenue
1979	1,314,350	12.0%	5.5%	20.0%
1980	1,491,059	15.9%	5.4%	19.4%
1981	1,622,734	11.2%	5.2%	18.4%
1982	1,617,290	0.0%	5.1%	19.1%
1983	2,307,437	43.6%	5.8%	19.4%
1984	2,187,884	-3.8%	4.3%	19.0%
1985	2,694,802	26.8%	4.9%	18.1%
1986	3,435,006	31.3%	4.3%	17.5%
1987	4,018,269	19.9%	3.6%	17.1%
1988	4,155,778	5.7%	3.3%	17.2%
1989	4,478,976	12.8%	3.9%	18.9%
1990	4,760,284	7.5%	3.8%	17.9%
1991	4,708,407	1.1%	4.2%	18.1%
1992	5,118,118	11.8%	4.5%	18.4%
1993	5,778,257	16.8%	4.8%	19.9%
1994	6,201,220	9.8%	4.5%	20.6%
1995	7,045,863	16.8%	4.6%	20.9%
1996	9,117,945	26.0%	4.3%	20.5%
1997	11,161,761	25.8%	4.1%	21.2%
1998	13,278,938	20.5%	3.7%	23.5%
1999	14,535,675	12.2%	3.3%	23.5%
2000	19,148,288	32.2%	4.0%	27.5%
2001	18,259,199	-2.7%	3.3%	27.6%
2002	17,518,021	-0.5%	4.8%	31.9%
2003	19,294,735	12.5%	5.2%	31.2%
2004	22,587,305	21.1%	4.9%	31.1%
2005	25,853,048	19.2%	4.5%	30.5%
2006	29,219,430	16.7%	4.2%	31.1%
2007	34,912,100	23.0%	4.6%	32.5%
2008	36,926,693	8.6%	4.8%	34.5%
2009	\$26,035,389	-27.3%	4.6%	37.7%

Average Annual Growth Rates and Average Rates of Return

30 YEAR	10.5%	13.8%
20 YEAR	9.2%	12.6%
10 YEAR	6.0%	10.3%
5 YEAR	2.9%	8.0%
1 YEAR	-29.5%	-

(1) This is the total return percentage reported by the Harvard Management Company.

It is calculated based on reinvestment of all earnings on a monthly basis.

(2) Prior to FY04: Spending rate based upon the per unit distribution rate established by the Corporation for each fiscal year.

Starting with FY04: Spending rate based upon actual endowment distributions in combination with approved decapitalizations of endowment principal made during the fiscal year.

SOURCE: ANNUAL FINANCIAL REPORT AND INTERNAL REPORTS

**About the Cover:**

The Harvard for Haiti benefit concert, Sanders Theater. Tsion Aberra '11 performs a solo with the Kuumba Singers. Harvard College students raised almost \$37,000 for Partners In Health, a Harvard-affiliated nongovernmental organization that has been working in Haiti for more than 20 years.

About Harvard:

Harvard University is the oldest institution of higher learning in the United States. It was established in 1636 by vote of the Great and General Court of the Massachusetts Bay Colony and was named for its first benefactor, John Harvard of Charlestown, Massachusetts. Upon his death in 1638, the young minister left his library and half his estate to the new College. Founded 16 years after the arrival of the Pilgrims at Plymouth, the College has grown from nine students with a single master to an enrollment of more than 20,000 degree candidates.

Photo by Jon Chase / Harvard University News Office

