

HARVARD UNIVERSITY  
FACT BOOK  
2010-11

<b>ORGANIZATION</b>	<b>Pages</b>
Central Administration	2
Faculties and Allied Institutions	3
Research and Academic Centers	4 – 5

<b>PEOPLE</b>	<b>Pages</b>
Degree Student Enrollment	6 – 9
Degrees Conferred	10 – 14
International Students	15 – 16
Summer School and Non-Degree Students	17
Faculty and Staff	18 – 21

<b>RESOURCES</b>	<b>Pages</b>
Tuition, Fees, and Financial Aid	22 – 24
Sponsored Programs	25 – 29
Library	30 – 31
Physical Plant	32 – 33
Environmental Performance	34 – 38
Income and Expenses	39 – 41
Endowment	42 – 43
Endnote	44

The Harvard University Fact Book is published annually by:  
The Office of Institutional Research  
Holyoke Center, Suite 780  
Cambridge, MA 02138

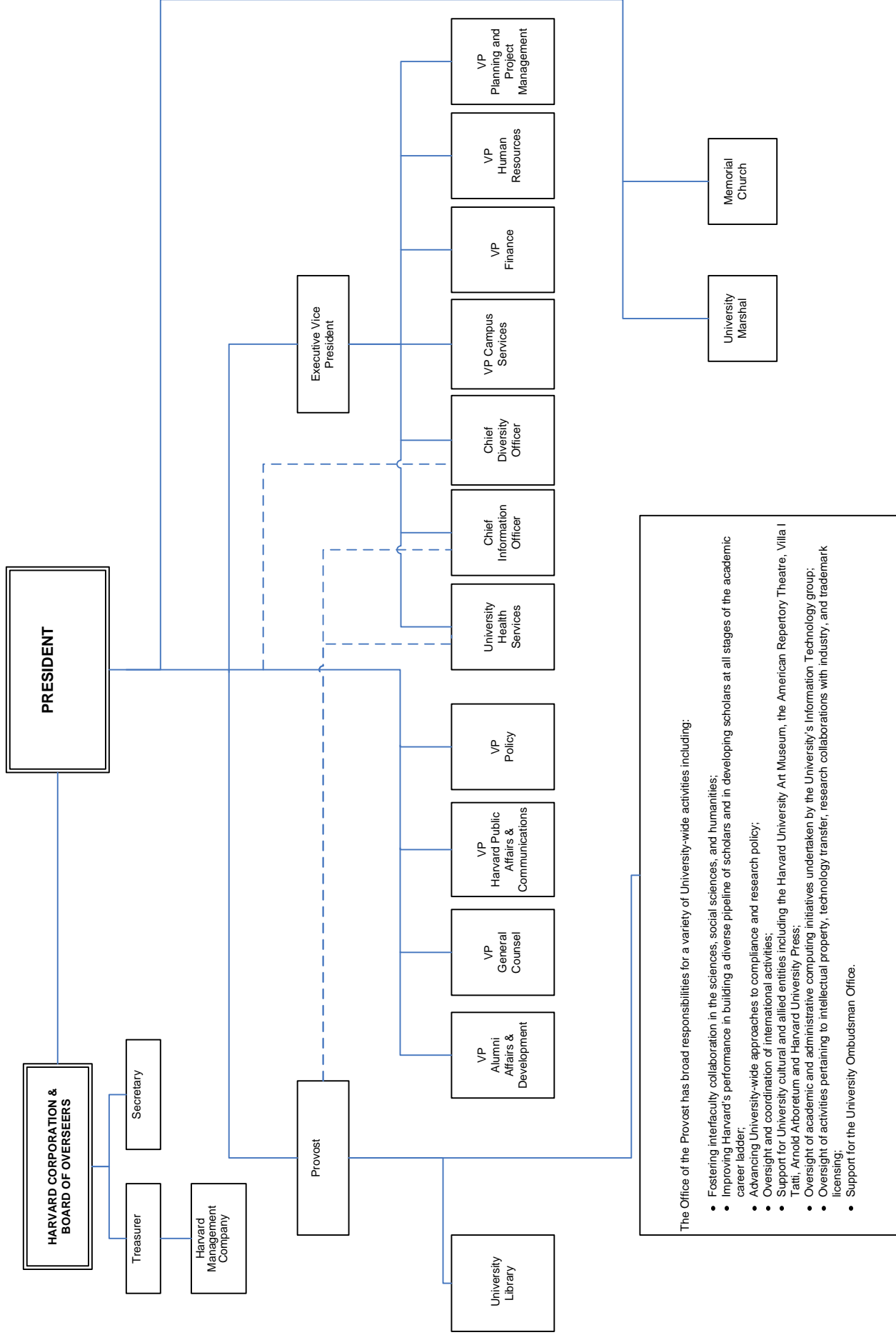
The address for the electronic version is:  
[http://www.provost.harvard.edu/institutional\\_research/factbook.php](http://www.provost.harvard.edu/institutional_research/factbook.php)

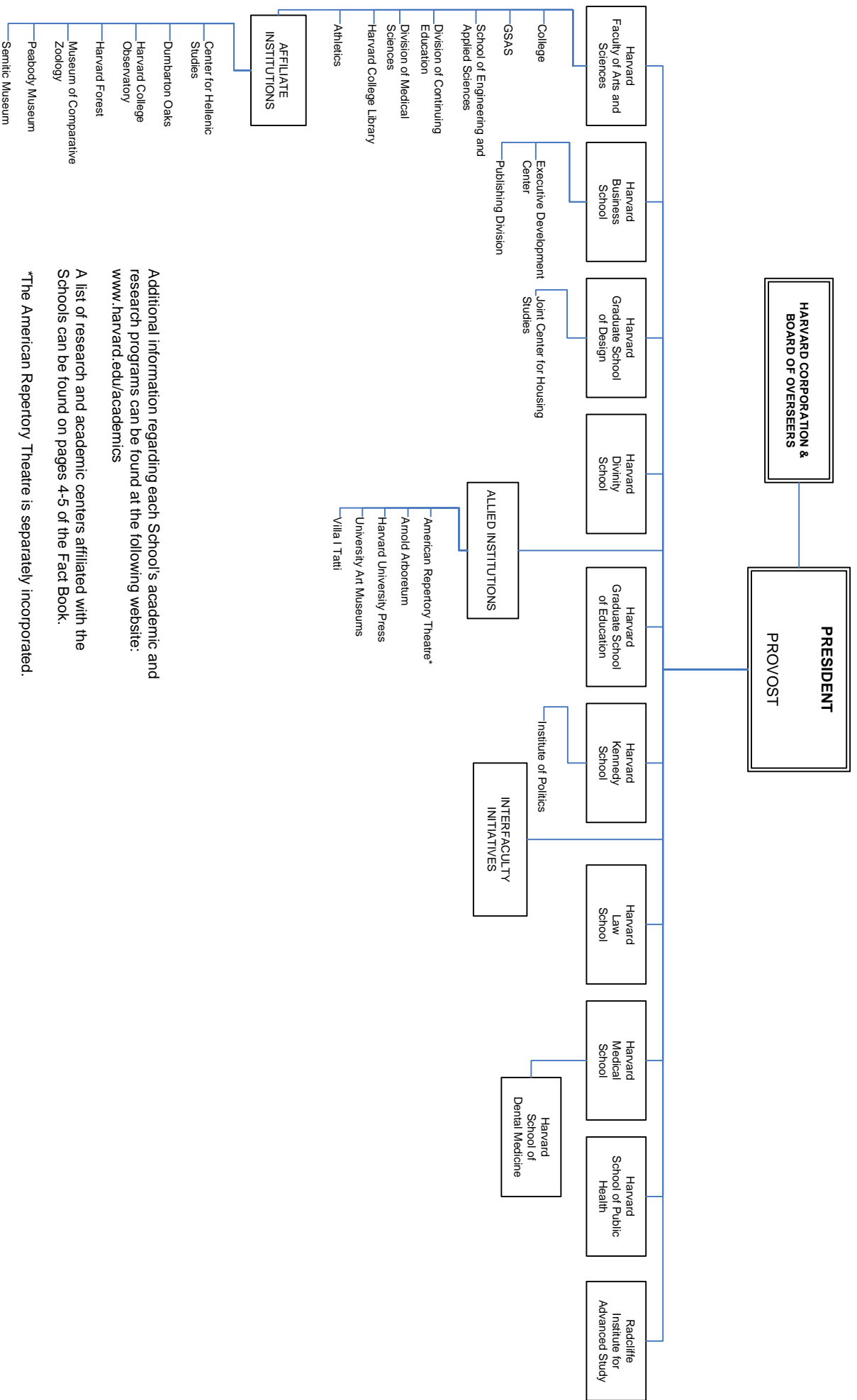
If you would like more information about data contained in the Fact Book, contact:

John Scanlon, Senior Data and Reporting Analyst  
(617) 495-0591, E-mail: [john\\_scanlon@harvard.edu](mailto:john_scanlon@harvard.edu)  
James Ward, Data and Reporting Coordinator  
(617) 496-3873, E-mail: [james\\_ward@harvard.edu](mailto:james_ward@harvard.edu)

Changes to content after hard copy publication are reflected on the web version of the Fact Book.

*Copyright 2011 by the President and Fellows of Harvard College*





Additional information regarding each School's academic and research programs can be found at the following website:  
[www.harvard.edu/academics](http://www.harvard.edu/academics)

A list of research and academic centers affiliated with the Schools can be found on pages 4-5 of the Fact Book.

\*The American Repertory Theatre is separately incorporated.

## Harvard University Research and Academic Centers

### FACULTY of ARTS and SCIENCES

Aga Khan Program for Islamic Architecture  
 Carpenter Center for the Visual Arts  
 Center for American Political Studies  
 Center for Brain Science\*  
 Center for Hellenic Studies  
 Center for Jewish Studies  
 Center for Middle Eastern Studies  
 Center for Nanoscale Systems  
 Center for Systems Biology  
 Davis Center for Russian and Eurasian Studies  
 W.E.B. Du Bois Institute for African and African-American  
 Research  
 Dumbarton Oaks  
 Fairbank Center for Chinese Studies  
 Film Study Center  
 Minda de Gunzburg Center for European Studies  
 Harvard College Observatory  
 Harvard Forest  
 Harvard Smithsonian Center for Astrophysics  
 Harvard University Asia Center\*\*\*  
 Harvard University Center for the Environment\*\*\*  
 Harvard University Committee on African Studies\*\*\*  
 Harvard-Yenching Institute  
 Institute for Quantitative Social Science\*\*\*  
     Center for Geographic Analysis<sup>(1)</sup>  
     Harvard-MIT Data Center<sup>(1)</sup>  
 Institute for Theory and Computation  
 Korea Institute  
 Mahindra Humanities Center\*\*\*  
 Program for Evolutionary Dynamics  
 Edwin O. Reischauer Institute of Japanese Studies  
 David Rockefeller Center for Latin American Studies\*\*\*  
 South Asia Initiative at Harvard\*\*\*  
 Prince Alwaleed Bin Talal Islamic Studies Program\*\*\*  
 Ukrainian Research Institute  
 Charles Warren Center for Studies in American History  
 Weatherhead Center for International Affairs  
     Harvard Academy for International and Area Studies<sup>(2)</sup>  
     Program on U.S. - Japan Relations<sup>(2)</sup>

### BUSINESS

C. Roland Christensen Center for Teaching and Learning  
 Global Initiative  
     Asia-Pacific Research Center  
     Europe Research Center  
     India Research Center  
     Japan Research Center  
     Latin America Research Center  
 Harvard Center Shanghai\*\*  
 Harvard Innovation Lab\*\*  
 Healthcare Initiative  
 Institute for Strategy and Competitiveness\*  
 Leadership Initiative

### BUSINESS (cont.)

Arthur M. Rock Center for Entrepreneurship  
 California Research Center  
 Social Enterprise Initiative

### DESIGN

Aga Khan Program at the Graduate School of Design  
 Joint Center for Housing Studies\*  
 Real Estate Academic Initiative\*\*\*  
 Research Advancement Initiative

### DIVINITY

Center for the Study of World Religions  
 Women's Studies in Religion Program

### EDUCATION

Achievement Gap Initiative\*  
 Center for Education Policy Research  
 Collaborative on Academic Careers in Higher Education  
 Executive Leadership Program for Educators at Harvard  
 University (ExEL)\*  
 Harvard Family Research Project  
 Programs in Professional Education/The Principals'  
 Center  
 Project Zero  
 Public Education Leadership Project\*  
 Three-to-Third  
 WIDE World<sup>(3)</sup>

### ENGINEERING AND APPLIED SCIENCES

Center for Research on Computation and Society  
 Institute for Quantum Science and Engineering  
 Kavli Institute for Bionano Science and Engineering  
 Materials Research Science and Engineering Center  
 Nanoscale Science and Engineering Center<sup>(4)</sup>  
 Rowland Institute

### GOVERNMENT

Roy and Lila Ash Center for Democratic Governance  
 and Innovation  
 Robert and Renee Belfer Center for Science and  
 International Affairs  
 Carr Center for Human Rights Policy  
 Center for International Development \*\*  
 Center for Public Leadership  
 Harvard Environmental Economics Program\*\*  
 Hauser Center for Nonprofit Organizations\*\*  
 Institute of Politics  
 Joint Center for Housing Studies\*  
 Mossavar-Rahmani Center for Business and  
 Government  
 Rappaport Institute for Greater Boston  
 Joan Shorenstein Center on the Press, Politics and  
 Public Policy

(1) These Programs are housed and administered within the Institute for Quantitative Social Science.

(2) These Programs are housed and administered within the Weatherhead Center.

(3) WIDE is the Wide-scale Interactive Development for Educators.

(4) The Nanoscale Science and Engineering Center is a joint program with M.I.T., U.C.S.B., and the Boston Museum of Science.

\* These Programs represent collaborations between two or more Schools.

\*\* These Programs are housed in particular Schools and report to a dean, but have been granted University-Wide Status.

\*\*\* These initiatives have a joint reporting structure to the Provost and to the dean of their home School.

SOURCE: SCHOOLS, OFFICE OF THE PROVOST

## Harvard University Research and Academic Centers

### GOVERNMENT (cont.)

A. Alfred Taubman Center for State and Local Government  
 Malcolm Wiener Center for Social Policy  
 Women and Public Policy Program

### MEDICINE

Center for Biomedical Informatics  
 Center for Genetics and Genomics, Harvard Medical School-  
 Partners Healthcare\*  
 Center for Health and the Global Environment  
 Center for Hereditary Deafness\*  
 Center for Immunodeficiency  
 Center for Integration of Medicine and Innovative Technology  
 Center for Magnetic Resonance\*  
 Center for Mental Health and Media\*  
 Center for Neurofibromatosis and Allied Disorders\*  
 Center for Palliative Care  
 Center for Primary Care  
 Dana Farber/Harvard Cancer Center\*  
 Division for Research and Education in  
 Complementary and Integrative Medical Therapies  
 Division of AIDS\*  
 Division of Emergency Medicine  
 Division of Health Policy Research and Education\*  
 Division of Health Sciences and Technology  
 Division of Medical Ethics\*  
 Division of Nutrition\*  
 Division of Service Learning  
 Division of Sleep Medicine  
 Harvard Catalyst: The Harvard Clinical and Translational  
 Science Center  
 Harvard Clinical Research Institute  
 Harvard-Mahoney Neuroscience Institute\*  
 Harvard NeuroDiscovery Center  
 Harvard Skin Disease Research Center  
 Institute of Chemistry and Cell Biology – Longwood Screening  
 Facility\*  
 Institute of Proteomics  
 JDRF Center for Immunological Tolerance at Harvard<sup>(1)</sup>  
 New England Primate Research Center  
 New England Regional Center of Excellence for Biodefense  
 and Emerging Infectious Diseases\*

### LAW

Berkman Center for Internet and Society\*\*\*  
 Child Advocacy Program  
 East Asian Legal Studies Program  
 Environmental Law and Policy Program  
 Foundations of Private Law  
 Charles Hamilton Houston Institute for Race and Justice  
 Human Rights Program  
 Institute for Global Law and Policy  
 Islamic Legal Studies Program  
 Labor and Worklife Program  
 Legal History Program

### LAW (cont.)

John M. Olin Center for Law, Economics and Business  
 Petrie-Flom Center for Health Law Policy, Biotechnology,  
 and Ethics\*  
 Program on Corporate Governance  
 Program on International Financial Systems  
 Program on Negotiation  
 Program on the Legal Profession  
 Project on Disability  
 Project on Law and Mind Sciences  
 Edmond J. Safra Foundation Center for Ethics\*\*\*  
 Tax Law Program

### PUBLIC HEALTH

Francois-Xavier Bagnoud Center for Health and Human  
 Rights\*\*\*  
 Center for Health Communication  
 Center for Health Decision Science  
 Harvard Center for Population and Development Studies\*\*\*  
 Harvard Injury Control Center  
 Harvard School of Public Health AIDS Initiative

### RADCLIFFE INSTITUTE FOR ADVANCED STUDY

Radcliffe Institute Fellowship Program  
 Arthur and Elizabeth Schlesinger Library on the History of  
 Women in America

### UNIVERSITY INTERFACULTY INITIATIVES<sup>(2)</sup>

Advanced Leadership Initiative  
 Francois-Xavier Bagnoud Center for Health and Human  
 Rights\*\*\*  
 Berkman Center for Internet and Society\*\*\*  
 Center on the Developing Child  
 Harvard Center for Population and Development Studies\*\*\*  
 Harvard China Fund  
 Harvard Humanitarian Initiative  
 Harvard Global Health Institute  
 Harvard Stem Cell Institute  
 Harvard University Asia Center\*\*\*  
 Harvard University Center for the Environment\*\*\*  
 Harvard University Committee on African Studies\*\*\*  
 Harvard University Native American Program  
 Institute for Quantitative Social Science\*\*\*  
 Mahindra Humanities Center\*\*\*  
 Microbial Sciences Initiative  
 Mind/Brain/Behavior Initiative  
 Origins of Life Initiative  
 Program in Health Policy  
 Real Estate Academic Initiative\*\*\*  
 David Rockefeller Center for Latin American Studies\*\*\*  
 Edmond J. Safra Foundation Center for Ethics\*\*\*  
 South Asia Initiative at Harvard\*\*\*  
 Prince Alwaleed Bin Talal Islamic Studies Program\*\*\*  
 Hansjörg Wyss Institute for Biologically Inspired Engineering

(1) JDRF is the Juvenile Diabetes Research Foundation.

(2) These Initiatives report to the Provost.

\* These Programs represent collaborations between two or more Schools.

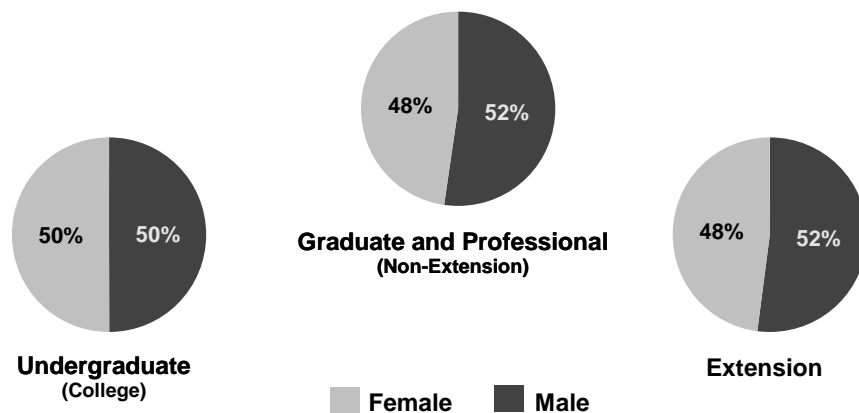
\*\* These Programs are housed in particular Schools and report to a dean, but have been granted University-Wide status.

\*\*\* These initiatives have a joint reporting structure to the Provost and to the dean of their home School.

SOURCE: SCHOOLS, OFFICE OF THE PROVOST

**Degree Student Head Count: Fall 2010**  
 Counts taken of October 15, 2010

	Male	Female	Total	Full-Time	Part-Time	Total
<b>College</b> <sup>(1,4)</sup>						
Freshmen	839	831	<b>1,670</b>	1,670	-	<b>1,670</b>
Sophomores	854	854	<b>1,708</b>	1,706	2	<b>1,708</b>
Juniors <sup>(2)</sup>	792	839	<b>1,631</b>	1,628	3	<b>1,631</b>
Seniors	833	799	<b>1,632</b>	1,629	3	<b>1,632</b>
Subtotal	<b>3,318</b>	<b>3,323</b>	<b>6,641</b>	<b>6,633</b>	<b>8</b>	<b>6,641</b>
<b>GSAS</b> <sup>(3,4)</sup>						
Division of Medical Science	251	325	<b>576</b>	576	-	<b>576</b>
All Other	1,946	1,420	<b>3,366</b>	3,349	17	<b>3,366</b>
Subtotal	<b>2,197</b>	<b>1,745</b>	<b>3,942</b>	<b>3,925</b>	<b>17</b>	<b>3,942</b>
Business	1,218	694	<b>1,912</b>	1,912	-	<b>1,912</b>
Dental	116	133	<b>249</b>	249	-	<b>249</b>
Design	347	344	<b>691</b>	690	1	<b>691</b>
Divinity	171	191	<b>362</b>	350	12	<b>362</b>
Education	277	720	<b>997</b>	902	95	<b>997</b>
Government	535	385	<b>920</b>	892	28	<b>920</b>
Law	1,056	928	<b>1,984</b>	1,983	1	<b>1,984</b>
Medical	420	368	<b>788</b>	788	-	<b>788</b>
Public Health	286	528	<b>814</b>	648	166	<b>814</b>
Extension	1,004	925	<b>1,929</b>	402	1527	<b>1,929</b>
Undergraduate	324	290	<b>614</b>	276	338	<b>614</b>
Graduate	680	635	<b>1,315</b>	126	1189	<b>1,315</b>
<b>Subtotal, All Degree Students</b>	<b>10,945</b>	<b>10,284</b>	<b>21,229</b>	<b>19,374</b>	<b>1,855</b>	<b>21,229</b>
<b>Adjustment for Joint Degree Students</b>	<b>(44)</b>	<b>(26)</b>	<b>(70)</b>			<b>(70)</b>
<b>TOTAL</b>	<b>10,901</b>	<b>10,258</b>	<b>21,159</b>			<b>21,159</b>



(1) Students in the Advanced Standing Program are counted as Juniors in their second year and Seniors in their third and fourth year. College total excludes students who are studying abroad.  
 (2) Counts for Juniors include 38 undergraduates unclassified by year.  
 (3) Graduate School of Arts and Sciences. Candidates for the Ph.D. are enrolled in GSAS but may cross register for courses in other faculties.  
 (4) GSAS and College include engineering students.

Historical Enrollments: Fall 2005 - 2010 <sup>(1)</sup>

## Degree Student Head Count by School

Counts taken as of October 15

	<b>2005</b>	<b>2006</b>	<b>2007</b>	<b>2008</b>	<b>2009</b>	<b>2010</b>
<b>College</b> <sup>(2,4)</sup>	6,613	6,715	6,648	6,678	6,655	6,641
<b>GSAS</b> <sup>(3,4)</sup>	3,753	3,750	3,682	3,720	3,738	3,942
<b>Business</b>	1,851	1,855	1,854	1,852	1,911	1,912
<b>Dental</b>	240	243	250	210	245	249
<b>Design</b>	579	618	602	610	662	691
<b>Divinity</b>	423	439	453	433	384	362
<b>Education</b>	975	971	905	902	992	997
<b>Government</b>	944	1,029	930	940	967	920
<b>Law</b>	1,948	1,966	1,966	1,952	1,987	1,984
<b>Medical</b>	784	818	809	782	756	788
<b>Public Health</b>	787	771	797	834	831	814
<b>Extension</b>						
<b>Undergraduate</b>	389	385	433	478	526	614
<b>Graduate</b>	599	590	700	929	1,461	1,315
<b>Subtotal, All Degree Students</b>	<b>19,885</b>	<b>20,150</b>	<b>20,029</b>	<b>20,320</b>	<b>21,115</b>	<b>21,229</b>
<b>Adjustment for Joint Degree Students</b>	(58)	(65)	(72)	(74)	(98)	(70)
<b>TOTAL</b>	<b>19,827</b>	<b>20,085</b>	<b>19,957</b>	<b>20,246</b>	<b>21,017</b>	<b>21,159</b>
<b>Enrollment Level</b> <sup>(5)</sup>	<b>2005</b>	<b>2006</b>	<b>2007</b>	<b>2008</b>	<b>2009</b>	<b>2010</b>
<b>Undergraduates</b>						
<b>Full-Time</b>	6,792	6,880	6,837	6,890	6,869	6,909
<b>Part-Time</b>	210	220	244	266	312	346
<b>Subtotal</b>	<b>7,002</b>	<b>7,100</b>	<b>7,081</b>	<b>7,156</b>	<b>7,181</b>	<b>7,255</b>
<b>Graduate and Professional Students</b>						
<b>Full-Time</b>	11,840	12,070	12,006	11,972	12,338	12,465
<b>Part-Time</b>	1,043	980	942	1,192	1,596	1,509
<b>Subtotal</b>	<b>12,883</b>	<b>13,050</b>	<b>12,948</b>	<b>13,164</b>	<b>13,934</b>	<b>13,974</b>
<b>TOTAL</b>	<b>19,885</b>	<b>20,150</b>	<b>20,029</b>	<b>20,320</b>	<b>21,115</b>	<b>21,229</b>

(1) Several Harvard schools enrolled students displaced by Hurricane Katrina during Fall 2005. These students are included in the counts for non-degree students on page 17.

(2) College totals exclude students who were studying abroad.

(3) Graduate School of Arts and Sciences. Candidates for the Ph.D. are enrolled in GSAS but may cross register for courses in other faculties.

(4) Counts for GSAS and College include engineering students.

(5) Includes degree candidates from the Extension School. Not adjusted for joint degree students.

SOURCE: REGISTRAR OFFICES



**Student Enrollment by Degree: Fall 2010**  
 Counts taken as of October 15, 2010

		Male		Female		Total
		Full-Time	Part-Time	Full-Time	Part-Time	
College <sup>(1)</sup>	A.B., S.B.	3,317	1	3,316	7	6,641
GSAS <sup>(2)</sup>	A.M., S.M., M.E.	73	10	60	7	150
	Ph.D.	2,114	-	1,678	-	3,792
Business	M.B.A.	1,192	-	668	-	1,860
	D.B.A.	26	-	26	-	52
Dental	D.M.D.	55	-	94	-	149
	M.M.Sc.	18	-	14	-	32
	D.M.Sc.	19	-	10	-	29
	Cert.	24	-	15	-	39
Design	M.Arch.	168	1	155	-	324
	M.A.U.D., M.L.A.U.D.	36	-	22	-	58
	M.Des.	58	-	33	-	91
	M.L.A.	42	-	88	-	130
	M.U.P.	25	-	33	-	58
	D.Des.	17	-	13	-	30
Divinity	M.Div.	54	1	87	4	146
	M.T.S.	85	5	80	2	172
	Th.M.	3	-	-	-	3
	Th.D.	23	-	18	-	41
Education	Ed.M.	147	24	450	53	674
	Ed.L.D.	9	-	16	-	25
	Ed.D.	88	8	188	10	294
	C.A.S.	1	-	3	-	4
Government	M.P.A. <sup>(3)</sup>	214	9	116	3	342
	M.P.A.I.D.	70	-	56	2	128
	M.P.P.	224	8	186	6	424
	M.U.P.	1	-	5	-	6
	Ph.D.	9	-	11	-	20
Law	J.D.	898	-	828	-	1,726
	LL.M.	113	1	77	-	191
	S.J.D.	44	-	23	-	67
Medical	M.D.	378	-	346	-	724
	M.M.Sc.	42	-	22	-	64
Public Health	M.P.H.	76	29	96	57	258
	S.M.	55	31	156	22	264
	D.P.H.	3	-	3	3	9
	D.S.	85	7	174	17	283
Extension	A.A., A.L.B.	157	167	119	171	614
	A.L.M., Grad. Cert.	70	610	56	579	1,315
	<b>TOTAL <sup>(4)</sup></b>	<b>10,033</b>	<b>912</b>	<b>9,341</b>	<b>943</b>	<b>21,229</b>

(1) College total excludes students who are studying abroad and includes Engineering students.

(2) Graduate School of Arts and Sciences. Counts include Engineering students.

(3) M.P.A. Program includes the two-year M.P.A. program and the one-year M.P.A. Mid-Career program.

(4) Not adjusted for joint degree students.

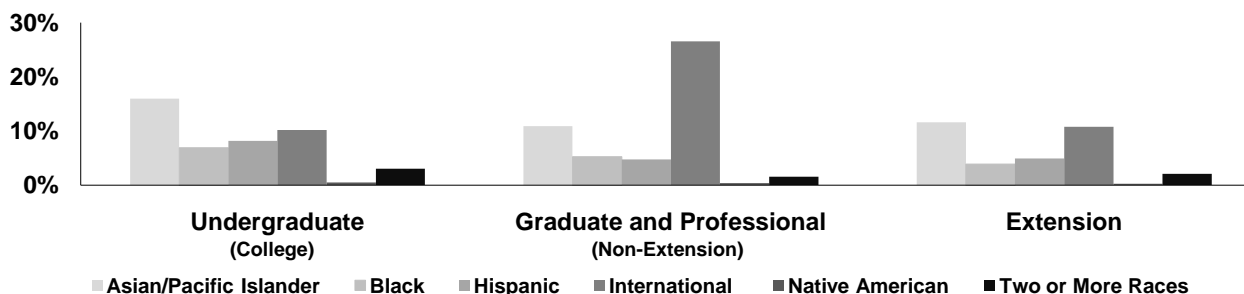
SOURCE: REGISTRAR OFFICES

# Degree Student Enrollment by Ethnicity: Fall 2010

Counts taken as of October 15, 2010

	College	GSAS <sup>(1)</sup>	Business	Dental	Design	Divinity	Education	Government	Law	Medical	Public Health	Extension	Total
<b>Asian/Pacific Islander</b>													
Male	442	151	129	33	30	9	21	27	74	118	21	128	1,183
Female	619	188	97	44	57	10	73	37	101	98	56	95	1,475
<b>Subtotal</b>	<b>1,061</b>	<b>339</b>	<b>226</b>	<b>77</b>	<b>87</b>	<b>19</b>	<b>94</b>	<b>64</b>	<b>175</b>	<b>216</b>	<b>77</b>	<b>223</b>	<b>2,658</b>
Percent	16%	9%	12%	31%	13%	5%	9%	7%	9%	27%	9%	12%	12.5%
<b>Black/Non-Hispanic</b>													
Male	203	30	66	3	11	11	36	12	82	37	12	43	546
Female	254	64	31	-	6	13	64	18	103	34	33	32	652
<b>Subtotal</b>	<b>457</b>	<b>94</b>	<b>97</b>	<b>3</b>	<b>17</b>	<b>24</b>	<b>100</b>	<b>30</b>	<b>185</b>	<b>71</b>	<b>45</b>	<b>75</b>	<b>1,198</b>
Percent	7%	2%	5%	1%	2%	7%	10%	3%	9%	9%	6%	4%	5.6%
<b>Hispanic</b>													
Male	281	58	51	2	17	12	18	29	63	35	5	55	626
Female	261	48	21	6	16	16	60	23	67	33	22	40	613
<b>Subtotal</b>	<b>542</b>	<b>106</b>	<b>72</b>	<b>8</b>	<b>33</b>	<b>28</b>	<b>78</b>	<b>52</b>	<b>130</b>	<b>68</b>	<b>27</b>	<b>95</b>	<b>1,239</b>
Percent	8%	3%	4%	3%	5%	8%	8%	6%	7%	9%	3%	5%	5.8%
<b>International Students</b>													
Male	372	799	397	26	111	16	31	216	199	27	129	117	2,440
Female	303	511	237	23	102	21	78	135	143	20	139	90	1,802
<b>Subtotal</b>	<b>675</b>	<b>1,310</b>	<b>634</b>	<b>49</b>	<b>213</b>	<b>37</b>	<b>109</b>	<b>351</b>	<b>342</b>	<b>47</b>	<b>268</b>	<b>207</b>	<b>4,242</b>
Percent	10%	33%	33%	20%	31%	10%	11%	38%	17%	6%	33%	11%	20.0%
<b>Native American</b>													
Male	18	3	2	-	4	2	2	4	7	1	1	-	44
Female	13	1	2	1	1	-	2	4	3	1	2	5	35
<b>Subtotal</b>	<b>31</b>	<b>4</b>	<b>4</b>	<b>1</b>	<b>5</b>	<b>2</b>	<b>4</b>	<b>8</b>	<b>10</b>	<b>2</b>	<b>3</b>	<b>5</b>	<b>79</b>
Percent	0%	0%	0%	0%	1%	1%	0%	1%	1%	0%	0%	0%	0.4%
<b>Two or More Races</b>													
Male	71	27	6	2	5	3	12	2	5	15	4	19	171
Female	129	29	6	5	6	10	22	3	6	11	16	21	264
<b>Subtotal</b>	<b>200</b>	<b>56</b>	<b>12</b>	<b>7</b>	<b>11</b>	<b>13</b>	<b>34</b>	<b>5</b>	<b>11</b>	<b>26</b>	<b>20</b>	<b>40</b>	<b>435</b>
Percent	3%	1%	1%	3%	2%	4%	3%	1%	1%	3%	2%	2%	2.0%
<b>White/Non-Hispanic</b>													
Male	1,521	928	436	48	139	99	147	177	485	167	89	575	4,811
Female	1,342	754	231	53	124	109	392	119	421	147	201	585	4,478
<b>Subtotal</b>	<b>2,863</b>	<b>1,682</b>	<b>667</b>	<b>101</b>	<b>263</b>	<b>208</b>	<b>539</b>	<b>296</b>	<b>906</b>	<b>314</b>	<b>290</b>	<b>1,160</b>	<b>9,289</b>
Percent	43%	43%	35%	41%	38%	57%	54%	32%	46%	40%	36%	60%	43.8%
<b>Unknown</b>													
Male	410	201	131	2	30	19	10	68	141	20	25	67	1,124
Female	402	150	69	1	32	12	29	46	84	24	59	57	965
<b>Subtotal</b>	<b>812</b>	<b>351</b>	<b>200</b>	<b>3</b>	<b>62</b>	<b>31</b>	<b>39</b>	<b>114</b>	<b>225</b>	<b>44</b>	<b>84</b>	<b>124</b>	<b>2,089</b>
Percent	12%	9%	10%	1%	9%	9%	4%	12%	11%	6%	10%	6%	9.8%
<b>TOTAL <sup>(2)</sup></b>	<b>6,641</b>	<b>3,942</b>	<b>1,912</b>	<b>249</b>	<b>691</b>	<b>362</b>	<b>997</b>	<b>920</b>	<b>1,984</b>	<b>788</b>	<b>814</b>	<b>1,929</b>	<b>21,229</b>

## Percentage of Minority and International Students by Enrollment Level



(1) Graduate School of Arts and Sciences.

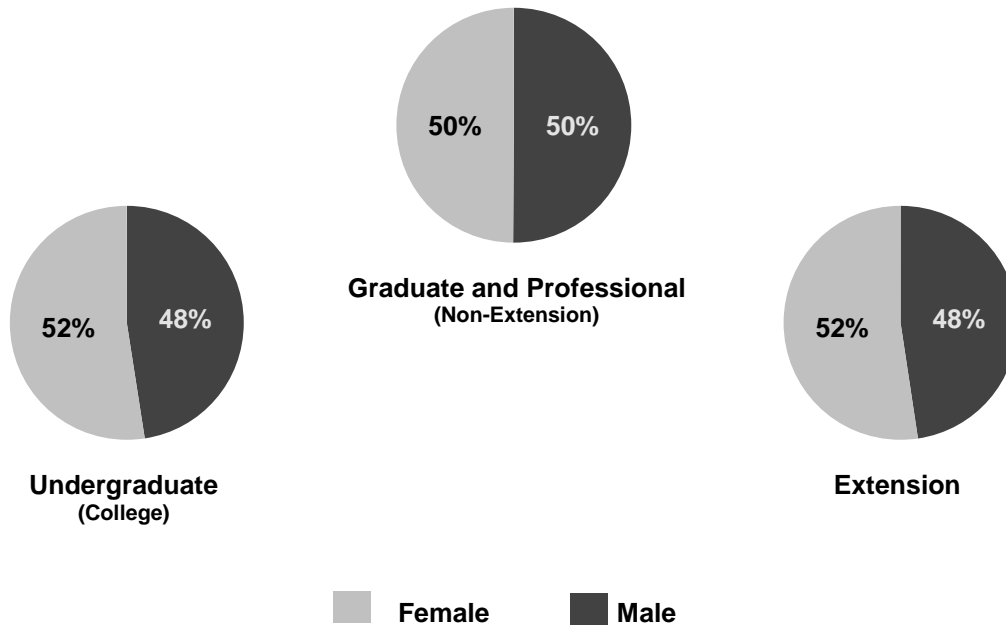
(2) Counts for College and GSAS include Engineering students. Not adjusted for joint degrees.

Note: Changes to federal guidelines for race/ethnicity reporting were incorporated in academic year 2010. Therefore, figures from Fall 2010 and beyond may not be directly comparable to prior years.

SOURCE: REGISTRAR OFFICES

## Degrees Conferred by School <sup>(1)</sup> Academic Year 2009-2010

	Male	Female	Total
<b>College</b>	796	878	1,674
<b>GSAS <sup>(2)</sup></b>	470	385	855
<b>Business</b>	570	346	916
<b>Dental</b>	29	40	69
<b>Design</b>	127	107	234
<b>Divinity</b>	67	88	155
<b>Education</b>	174	511	685
<b>Government</b>	343	233	576
<b>Law</b>	408	353	761
<b>Medical</b>	86	94	180
<b>Public Health</b>	186	293	479
<b>Extension</b>			
<b>Undergraduate</b>	65	68	133
<b>Graduate</b>	283	315	598
<b>TOTAL</b>	<b>3,604</b>	<b>3,711</b>	<b>7,315</b>



(1) Not adjusted for joint degree students.

(2) Graduate School of Arts and Sciences

SOURCE: REGISTRAR OFFICES

Degrees Conferred by Program: Academic Year 2009-2010 <sup>(1)</sup>

		Male	Female	Total
College	A.B.	785	875	1,660
	S.B.	11	3	14
GSAS <sup>(2)</sup>	A.M.	160	157	317
	M.E.	1	1	2
	S.M.	38	20	58
	Ph.D.	271	207	478
Business	M.B.A.	567	342	909
	D.B.A.	3	4	7
Dental	D.M.D.	12	22	34
	M.M.Sc.	8	5	13
	D.M.Sc.	5	2	7
	Certificate	4	11	15
Design	M.Arch.	56	48	104
	M.A.U.D., M.L.A.U.D.	21	11	32
	M.Des.	14	11	25
	M.L.A.	16	21	37
	M.U.P.	15	12	27
	D.Des.	5	4	9
Divinity	M.Div.	22	34	56
	M.T.S.	35	51	86
	Th.M.	6	2	8
	Th.D.	4	1	5
Education	Ed.M.	153	472	625
	Ed.D.	20	34	54
	C.A.S.	1	5	6
Government	M.P.A.	191	105	296
	M.P.A.I.D.	46	19	65
	M.P.P.	104	106	210
	M.U.P.	2	3	5
Law	J.D.	310	279	589
	LL.M.	89	72	161
	S.J.D.	9	2	11
Medical	M.D.	75	78	153
	M.M.Sc.	11	16	27
Public Health	M.P.H.	117	151	268
	S.M.	57	100	157
	D.P.H.	1	2	3
	D.S.	11	40	51
Extension	A.A.	5	1	6
	A.L.B.	60	67	127
	A.L.M.	253	270	523
	Graduate Certificates	30	45	75
	<b>TOTAL</b>	<b>3,604</b>	<b>3,711</b>	<b>7,315</b>

(1) Not adjusted for joint degree students.

(2) Graduate School of Arts and Sciences.

SOURCE: REGISTRAR OFFICES

## Harvard College Undergraduate Degrees Conferred by Concentration <sup>(1)</sup>

### Academic Year 2009-2010

	<b>Concentration</b>	<b>Male</b>	<b>Female</b>	<b>Total</b>	
<b>Humanities</b>	English and American Literature and Language	23	62	<b>85</b>	
	History and Literature	14	39	<b>53</b>	
	Visual and Environmental Studies	14	28	<b>42</b>	
	Philosophy	13	7	<b>20</b>	
	East Asian Studies	3	15	<b>18</b>	
	History of Art and Architecture	1	17	<b>18</b>	
	Music	11	7	<b>18</b>	
	Literature	3	12	<b>15</b>	
	Classics	8	6	<b>14</b>	
	Comparative Study of Religion	6	5	<b>11</b>	
	Folklore and Mythology	3	8	<b>11</b>	
	Linguistics	5	4	<b>9</b>	
	Romance Languages and Literatures	1	8	<b>9</b>	
	Near Eastern Languages and Civilizations	3	3	<b>6</b>	
	German	2	2	<b>4</b>	
	Sanskrit and Indian Studies	-	1	<b>1</b>	
	Slavic Languages and Literature	-	1	<b>1</b>	
		<b>Humanities Subtotal</b>	<b>110</b>	<b>225</b>	<b>335</b>
	<b>Natural Sciences</b>	Molecular and Cellular Biology	29	33	<b>62</b>
Neurobiology		18	37	<b>55</b>	
Applied Mathematics		29	17	<b>46</b>	
Human Evolutionary Biology		16	27	<b>43</b>	
Mathematics		33	8	<b>41</b>	
Computer Science		33	7	<b>40</b>	
Chemistry		20	10	<b>30</b>	
Physics		24	3	<b>27</b>	
Organismic and Evolutionary Biology		8	16	<b>24</b>	
Chemical and Physical Biology		11	11	<b>22</b>	
Engineering Sciences (A.B. and S.B.)		25	11	<b>36</b>	
Environmental Science and Public Policy		3	11	<b>14</b>	
Earth and Planetary Sciences		7	4	<b>11</b>	
Chemistry and Physics		6	4	<b>10</b>	
Statistics		8	1	<b>9</b>	
Astrophysics		4	2	<b>6</b>	
Biochemical Sciences		2	3	<b>5</b>	
Biology		2	1	<b>3</b>	
		<b>Natural Sciences Subtotal</b>	<b>278</b>	<b>206</b>	<b>484</b>
<b>Social Sciences</b>	Economics	188	107	<b>295</b>	
	Government	68	72	<b>140</b>	
	History	56	49	<b>105</b>	
	Psychology	28	67	<b>95</b>	
	Social Studies	40	54	<b>94</b>	
	Anthropology	12	46	<b>58</b>	
	Sociology	15	29	<b>44</b>	
	History of Science	11	25	<b>36</b>	
	African and African American Studies	4	9	<b>13</b>	
	Studies of Women, Gender and Sexuality	1	4	<b>5</b>	
		<b>Social Sciences Subtotal</b>	<b>423</b>	<b>462</b>	<b>885</b>
	<b>Special Concentrations Subtotal</b>	<b>5</b>	<b>6</b>	<b>11</b>	
	<b>Grand Total <sup>(1)</sup></b>	<b>816</b>	<b>899</b>	<b>1,715</b>	
	Joint Concentrators	(20)	(21)	(41)	
	<b>Unduplicated Student Count</b>	<b>796</b>	<b>878</b>	<b>1,674</b>	

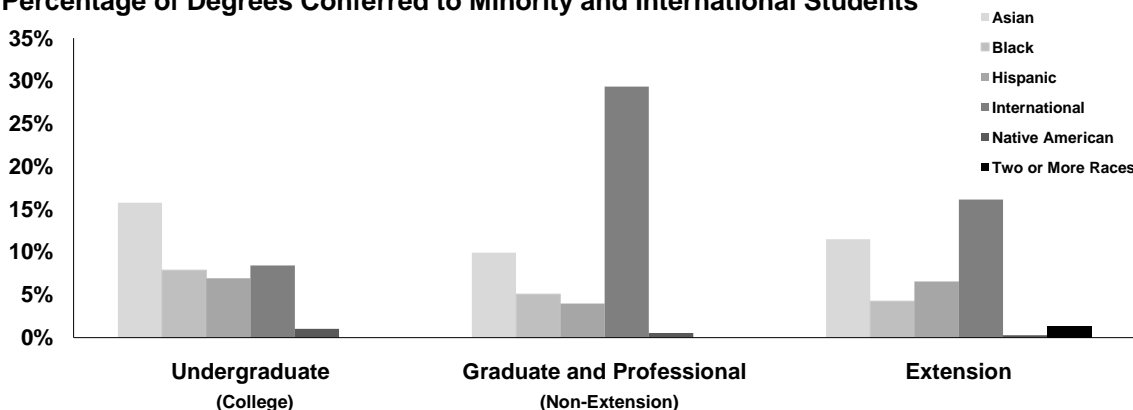
(1) Both concentrations for joint concentrators are included. An adjustment is provided to obtain the total unduplicated student count.

SOURCE: REGISTRAR OFFICES

**Degrees Conferred by Student Ethnicity: Academic Year 2009-2010 <sup>(1)</sup>**

	College	GSAS <sup>(2)</sup>	Business	Dental	Design	Divinity	Education	Government	Law	Medical	Public Health	Extension	Total
<b>Asian/Pacific Islander</b>													
Male	108	46	62	5	12	1	14	14	22	30	19	48	381
Female	156	34	58	12	16	3	49	22	27	18	23	36	454
<b>Subtotal</b>	<b>264</b>	<b>80</b>	<b>120</b>	<b>17</b>	<b>28</b>	<b>4</b>	<b>63</b>	<b>36</b>	<b>49</b>	<b>48</b>	<b>42</b>	<b>84</b>	<b>835</b>
Percent	16%	9%	13%	25%	12%	3%	9%	6%	6%	27%	9%	11%	11.4%
<b>Black/Non-Hispanic</b>													
Male	46	5	17	1	2	5	20	10	26	4	6	13	155
Female	86	13	24	1	-	5	27	14	41	13	16	18	258
<b>Subtotal</b>	<b>132</b>	<b>18</b>	<b>41</b>	<b>2</b>	<b>2</b>	<b>10</b>	<b>47</b>	<b>24</b>	<b>67</b>	<b>17</b>	<b>22</b>	<b>31</b>	<b>413</b>
Percent	8%	2%	4%	3%	1%	6%	7%	4%	9%	9%	5%	4%	5.6%
<b>Hispanic</b>													
Male	50	16	26	-	5	1	7	20	18	6	4	22	175
Female	66	12	6	-	5	6	23	13	14	6	8	26	185
<b>Subtotal</b>	<b>116</b>	<b>28</b>	<b>32</b>	<b>-</b>	<b>10</b>	<b>7</b>	<b>30</b>	<b>33</b>	<b>32</b>	<b>12</b>	<b>12</b>	<b>48</b>	<b>360</b>
Percent	7%	3%	3%	0%	4%	5%	4%	6%	4%	7%	3%	7%	4.9%
<b>International Students</b>													
Male	91	173	199	10	49	4	17	157	110	8	91	55	964
Female	50	108	86	8	37	6	86	81	89	12	109	63	735
<b>Subtotal</b>	<b>141</b>	<b>281</b>	<b>285</b>	<b>18</b>	<b>86</b>	<b>10</b>	<b>103</b>	<b>238</b>	<b>199</b>	<b>20</b>	<b>200</b>	<b>118</b>	<b>1,699</b>
Percent	8%	33%	31%	26%	37%	6%	15%	41%	26%	11%	42%	16%	23.2%
<b>Native American</b>													
Male	9	2	4	-	-	2	-	3	1	1	1	-	23
Female	8	1	1	-	-	-	3	4	2	-	2	2	23
<b>Subtotal</b>	<b>17</b>	<b>3</b>	<b>5</b>	<b>-</b>	<b>-</b>	<b>2</b>	<b>3</b>	<b>7</b>	<b>3</b>	<b>1</b>	<b>3</b>	<b>2</b>	<b>46</b>
Percent	1%	0%	1%	0%	0%	1%	0%	1%	0%	1%	1%	0%	0.6%
<b>Two or More Races</b>													
Male	-	-	-	-	-	-	-	-	-	-	-	8	8
Female	-	-	-	-	-	-	-	-	-	-	-	2	2
<b>Subtotal</b>	<b>-</b>	<b>-</b>	<b>-</b>	<b>-</b>	<b>-</b>	<b>-</b>	<b>-</b>	<b>-</b>	<b>-</b>	<b>-</b>	<b>-</b>	<b>10</b>	<b>10</b>
Percent	0%	0%	0%	0%	0%	0%	0%	0%	0%	0%	0%	1%	0%
<b>White/Non-Hispanic</b>													
Male	378	178	189	11	44	42	92	97	176	35	43	185	1,470
Female	373	172	122	15	38	57	272	69	134	42	87	224	1,605
<b>Subtotal</b>	<b>751</b>	<b>350</b>	<b>311</b>	<b>26</b>	<b>82</b>	<b>99</b>	<b>364</b>	<b>166</b>	<b>310</b>	<b>77</b>	<b>130</b>	<b>409</b>	<b>3,075</b>
Percent	45%	41%	34%	38%	35%	64%	53%	29%	41%	43%	27%	56%	42.0%
<b>Unknown/Other</b>													
Male	114	50	73	2	15	12	24	42	55	2	22	17	428
Female	139	45	49	4	11	11	51	30	46	3	48	12	449
<b>Subtotal</b>	<b>253</b>	<b>95</b>	<b>122</b>	<b>6</b>	<b>26</b>	<b>23</b>	<b>75</b>	<b>72</b>	<b>101</b>	<b>5</b>	<b>70</b>	<b>29</b>	<b>877</b>
Percent	15%	11%	13%	9%	11%	15%	11%	13%	13%	3%	15%	4%	12.0%
<b>TOTAL</b>	<b>1,674</b>	<b>855</b>	<b>916</b>	<b>69</b>	<b>234</b>	<b>155</b>	<b>685</b>	<b>576</b>	<b>761</b>	<b>180</b>	<b>479</b>	<b>731</b>	<b>7,315</b>

**Percentage of Degrees Conferred to Minority and International Students**



(1) Not adjusted for joint degree students.

(2) Graduate School of Arts and Sciences.

Note: Changes to federal guidelines for race/ethnicity reporting were incorporated in academic year 2010. Therefore, figures from 2010 and beyond may not be directly comparable to prior years.

SOURCE: REGISTRAR OFFICES

Degrees Conferred: Academic Year 2005-2010 <sup>(1)</sup>

		2005	2006	2007	2008	2009	2010
College	A.B.	1,672	1,629	1,671	1,631	1,647	1,660
	S.B.	17	11	25	13	17	14
	<b>Subtotal</b>	<b>1,689</b>	<b>1,640</b>	<b>1,696</b>	<b>1,644</b>	<b>1,664</b>	<b>1,674</b>
GSAS <sup>(2)</sup>	A.M.	331	402	342	380	334	317
	M.E.	-	-	-	1	-	2
	M.F.S.	-	4	1	-	-	-
	S.M.	66	56	59	67	66	58
	Ph.D.	413	473	541	534	512	478
	<b>Subtotal</b>	<b>810</b>	<b>935</b>	<b>943</b>	<b>982</b>	<b>912</b>	<b>855</b>
Business	M.B.A.	884	903	901	907	889	909
	D.B.A.	6	3	5	5	7	7
	<b>Subtotal</b>	<b>890</b>	<b>906</b>	<b>906</b>	<b>912</b>	<b>896</b>	<b>916</b>
Dental	D.M.D.	34	32	30	40	30	34
	M.M.Sc.	12	9	13	14	9	13
	D.M.S.	11	4	8	5	5	7
	Cert.	12	36	20	40	21	15
	<b>Subtotal</b>	<b>69</b>	<b>81</b>	<b>71</b>	<b>99</b>	<b>65</b>	<b>69</b>
Design	M. Arch.	87	81	100	116	97	104
	M.A.U.D., M.L.A.U.D.	28	23	24	21	17	32
	M.Des.	55	45	11	33	33	25
	M.L.A.	47	25	37	25	32	37
	M.U.P.	32	21	24	29	21	27
	D.Des.	7	12	9	12	6	9
<b>Subtotal</b>	<b>256</b>	<b>207</b>	<b>205</b>	<b>236</b>	<b>206</b>	<b>234</b>	
Divinity	M.Div.	58	42	47	43	62	56
	M.T.S.	94	97	96	116	113	86
	Th.M.	4	9	4	3	7	8
	Th.D.	10	9	1	11	6	5
<b>Subtotal</b>	<b>166</b>	<b>157</b>	<b>148</b>	<b>173</b>	<b>188</b>	<b>155</b>	
Education	Ed.M.	643	580	591	552	538	625
	Ed.D.	53	70	53	40	41	54
	C.A.S.	3	11	19	15	18	6
	<b>Subtotal</b>	<b>699</b>	<b>661</b>	<b>663</b>	<b>607</b>	<b>597</b>	<b>685</b>
Government	M.P.A.	298	275	309	276	269	296
	M.P.A.I.D.	64	63	71	83	53	65
	M.P.P.	194	175	205	214	190	210
	M.U.P.	6	5	7	4	-	5
<b>Subtotal</b>	<b>562</b>	<b>518</b>	<b>592</b>	<b>577</b>	<b>512</b>	<b>576</b>	
Law	J.D.	547	582	574	588	567	589
	LL.M.	161	159	154	168	151	161
	S.J.D.	3	7	14	10	13	11
<b>Subtotal</b>	<b>711</b>	<b>748</b>	<b>742</b>	<b>766</b>	<b>731</b>	<b>761</b>	
Medicine	M.D.	147	152	189	174	175	153
	M.M.Sc.	26	22	23	22	26	27
	<b>Subtotal</b>	<b>173</b>	<b>174</b>	<b>212</b>	<b>196</b>	<b>201</b>	<b>180</b>
Public Health	M.P.H.	213	214	220	262	246	268
	S.M., M.O.H.	162	164	125	143	125	157
	D.P.H., D.S.	54	49	52	49	56	54
	<b>Subtotal</b>	<b>429</b>	<b>427</b>	<b>397</b>	<b>454</b>	<b>427</b>	<b>479</b>
Extension	A.A.	20	15	9	7	18	6
	A.L.B.	118	108	106	111	115	127
	A.L.M.	112	140	189	311	430	523
	Grad. Cert.	184	202	113	85	74	75
	<b>Subtotal</b>	<b>434</b>	<b>465</b>	<b>417</b>	<b>514</b>	<b>637</b>	<b>731</b>
<b>TOTAL</b>	<b>6,888</b>	<b>6,919</b>	<b>6,992</b>	<b>7,160</b>	<b>7,036</b>	<b>7,315</b>	

(1) Not adjusted for joint degree students.

(2) Graduate School of Arts and Sciences.

SOURCE: REGISTRAR OFFICES

International Enrollment: Fall 2010 <sup>(1)</sup>

	Africa	Asia	Europe	Caribbean, Central, and South America	Middle East	North America	Oceania	Stateless	Total
<b>College</b>	60	173	203	25	43	162	28	1	<b>695</b>
<b>GSAS <sup>(2)</sup></b>	20	665	436	53	105	183	32	-	<b>1,494</b>
<b>Business</b>	25	203	203	47	35	82	17	-	<b>612</b>
<b>Dental</b>	-	25	1	2	8	9	-	-	<b>45</b>
<b>Design</b>	2	128	42	10	7	26	5	-	<b>220</b>
<b>Divinity</b>	3	15	8	-	-	10	-	-	<b>36</b>
<b>Education</b>	3	58	6	13	2	13	6	-	<b>101</b>
<b>Government</b>	29	147	99	49	32	22	9	-	<b>387</b>
<b>Law</b>	29	110	144	39	23	62	14	-	<b>421</b>
<b>Medical</b>	8	10	4	2	-	18	-	-	<b>42</b>
<b>Public Health</b>	25	113	37	16	13	35	9	-	<b>248</b>
<b>Extension</b>	-	12	3	-	3	2	-	-	<b>20</b>
<b>TOTAL</b>	<b>204</b>	<b>1,659</b>	<b>1,186</b>	<b>256</b>	<b>271</b>	<b>624</b>	<b>120</b>	<b>1</b>	<b>4,321</b>

(1) Counts are for full-time students only, and include transfer and special students, visiting undergraduates, and

Extension School enrollees. Counts exclude students whose affiliation is listed as other, executive education and professional development programs.

(2) Graduate School of Arts and Sciences.

SOURCE: HARVARD INTERNATIONAL OFFICE



Historical Enrollment of International Students: Fall 2005 - 2010 <sup>(1)</sup>

	2005	2006	2007	2008	2009	2010	
<b>Africa</b>							
Ghana	17	25	24	25	21	24	<b>Africa Other:</b> Angola, Botswana, Cameroon, Djibouti, Egypt, Ethiopia, Lesotho, Libya, Madagascar, Mali, Mauritius, Morocco, Namibia, Rwanda, Senegal, Sierra Leone, Sudan, Swaziland, Tanzania, Tunisia, Uganda, Zambia.
Kenya	18	21	17	20	21	28	
Nigeria	25	22	27	35	41	38	
South Africa	22	22	21	23	29	24	
Zimbabwe	16	13	10	15	13	17	
Other	64	60	78	60	60	73	
<b>Subtotal</b>	<b>162</b>	<b>163</b>	<b>177</b>	<b>178</b>	<b>185</b>	<b>204</b>	
<b>Asia</b>							
China	378	403	400	421	463	541	<b>Asia Other:</b> Azerbaijan, Bangladesh, Bhutan, Brunei, Burma (Myanmar), Cambodia, Hong Kong, Indonesia, Kazakhstan, Malaysia, Mongolia, Nepal, Pakistan, Philippines, Sri Lanka, Taiwan, Thailand, Vietnam.
India	189	193	216	225	235	231	
Japan	135	130	127	107	101	100	
Singapore	75	71	66	89	114	133	
South Korea	244	269	297	305	314	304	
Other	298	313	307	328	341	350	
<b>Subtotal</b>	<b>1,319</b>	<b>1,379</b>	<b>1,413</b>	<b>1,475</b>	<b>1,568</b>	<b>1,659</b>	
<b>Europe</b>							
France	76	82	81	84	77	88	<b>Europe Other:</b> Albania, Armenia, Austria, Belarus, Belgium, Bosnia and Herzegovina, Bulgaria, Croatia, Cyprus, Czech Republic, Denmark, Estonia, Finland, Georgia, Hungary, Iceland, Ireland, Latvia, Liechtenstein, Lithuania, Luxembourg, Macedonia, Moldova, Montenegro, Netherlands, Norway, Poland, Portugal, Romania, Russia, Serbia, Slovakia, Slovenia, Sweden, Switzerland, Ukraine.
Germany	159	149	158	159	159	199	
Greece	49	49	56	46	46	44	
Italy	53	53	67	64	69	64	
Spain	44	52	52	66	67	60	
United Kingdom	177	194	201	209	227	242	
Other	464	473	465	467	452	489	
<b>Subtotal</b>	<b>1,022</b>	<b>1,052</b>	<b>1,080</b>	<b>1,095</b>	<b>1,097</b>	<b>1,186</b>	
<b>Caribbean, Central, and South America</b>							
Argentina	35	44	42	32	35	34	<b>Caribbean, Central, and South America Other:</b> The Bahamas, Barbados, Bolivia, Costa Rica, Dominica, Dominican Republic, Ecuador, El Salvador, Guatemala, Haiti, Jamaica, Nicaragua, Panama, Paraguay, St. Lucia, Trinidad and Tobago, Uruguay, Venezuela.
Brazil	64	61	71	72	76	62	
Chile	32	33	32	27	32	37	
Colombia	40	50	35	41	43	40	
Peru	20	28	24	16	19	20	
Other	58	72	73	82	78	63	
<b>Subtotal</b>	<b>249</b>	<b>288</b>	<b>277</b>	<b>270</b>	<b>283</b>	<b>256</b>	
<b>Middle East</b>							
Iran	8	13	11	15	15	19	<b>Middle East Other:</b> Afghanistan, Bahrain, Iraq, Jordan, Kuwait, Syria, United Arab Emirates, West Bank.
Israel	71	81	77	86	85	77	
Lebanon	13	16	22	21	23	29	
Saudi Arabia	10	10	10	14	14	12	
Turkey	71	80	90	96	96	97	
Other	42	37	41	35	38	37	
<b>Subtotal</b>	<b>215</b>	<b>237</b>	<b>251</b>	<b>267</b>	<b>271</b>	<b>271</b>	
<b>North America</b>							
Canada	481	471	489	530	538	541	
Mexico	78	98	83	76	79	83	
<b>Subtotal</b>	<b>559</b>	<b>569</b>	<b>572</b>	<b>606</b>	<b>617</b>	<b>624</b>	
<b>Oceania</b>							
Australia	82	68	67	78	88	98	
New Zealand	20	21	24	19	17	22	
Other	1	-	-	1	1	-	
<b>Subtotal</b>	<b>103</b>	<b>89</b>	<b>91</b>	<b>98</b>	<b>106</b>	<b>120</b>	
<b>Stateless</b>	2	2	1	4	1	1	
<b>TOTAL</b>	<b>3,631</b>	<b>3,779</b>	<b>3,862</b>	<b>3,993</b>	<b>4,128</b>	<b>4,321</b>	

(1) Counts are for full-time students only, and include transfer and special students, visiting undergraduates, and Extension School enrollees. Counts exclude students whose affiliation is listed as other, executive education and professional development programs.

SOURCE: HARVARD INTERNATIONAL OFFICE

**Summer School Enrollment: Summer 2005 - 2010**

**Harvard Students by School <sup>(1)</sup>**

	<b>2005</b>	<b>2006</b>	<b>2007</b>	<b>2008</b>	<b>2009</b>	<b>2010</b>
College	435	497	594	642	620	585
GSAS	76	57	77	61	57	50
Education	10	3	5	6	3	4
Extension	354	339	387	484	600	660
Other Harvard Schools	11	16	14	17	12	9
<b>Subtotal</b>	<b>886</b>	<b>912</b>	<b>1,077</b>	<b>1,210</b>	<b>1,292</b>	<b>1,308</b>

**Other Students by Educational Level <sup>(2)(3)</sup>**

Secondary School	1,156	1,444	1,362	1,502	1,303	1,236
Graduate	1,656	1,831	2,002	2,303	2,033	2,055
Undergraduate	1,109	1,286	1,409	1,650	1,499	1,317
Unknown	71	67	70	72	73	45
<b>Subtotal</b>	<b>3,992</b>	<b>4,628</b>	<b>4,843</b>	<b>5,527</b>	<b>4,908</b>	<b>4,653</b>
<b>TOTAL</b>	<b>4,878</b>	<b>5,540</b>	<b>5,920</b>	<b>6,737</b>	<b>6,200</b>	<b>5,961</b>

**Non-Degree Head Count: Fall 2005 - 2010 <sup>(4)</sup>**

	2005	2006	2007	2008	2009	2010		
						Male	Female	Total
College	36	-	-	-	-	-	-	-
GSAS	220	184	160	167	165	95	89	184
Design	6	2	3	3	3	2	1	3
Divinity	7	8	14	6	4	1	-	1
Education	89	104	107	104	63	15	44	59
Government	8	11	21	33	32	23	6	29
Law	68	49	48	35	18	24	22	46
Medical	1	-	-	-	-	-	-	-
Public Health	22	5	8	4	11	8	3	11
Extension <sup>(5)</sup>	4,675	5,265	5,300	5,859	6,240	2,856	3,176	6,032
<b>TOTAL</b>	<b>5,132</b>	<b>5,628</b>	<b>5,661</b>	<b>6,211</b>	<b>6,536</b>	<b>3,024</b>	<b>3,341</b>	<b>6,365</b>

(1) Counts include matriculating Harvard students enrolled in Harvard courses during the summer session.

(2) Beginning with 2004, high school graduates enrolled in secondary school programs are counted as undergraduates instead of Secondary School students.

(3) Previous versions of this page erroneously reversed counts for "Undergraduate" and "Secondary School" students in 2007 and 2008.

(4) Non-degree enrollments include all students enrolled on October 15 in at least one class that is creditable toward a degree or formal award.

2005 counts include 58 graduate students and 36 College students displaced by Hurricane Katrina.

(5) Counts are for the first semester only. This significantly undercounts yearly enrollment in the Extension School as approximately the same number of new students might be enrolled in the second semester.

SOURCE: HARVARD UNIVERSITY EXTENSION SCHOOL AND REGISTRAR OFFICES

## University-Wide Faculty and Staff as of October 31, 2010

Full-Time Equivalent	Faculty <sup>(1)</sup>	Other Academic <sup>(3)</sup>	Administrative & Professional	Clerical & Technical	Service & Trades	Grand Total
<b>Faculties</b>	<b>2,242.5</b>	<b>2,101.9</b>	<b>3,888.6</b>	<b>3,455.6</b>	<b>65.6</b>	<b>11,754.2</b>
Arts and Sciences	882.6	726.0	1,465.0	1,253.4	-	4,327.1
Engineering and Applied Science	78.8	168.5	84.2	66.5	8.5	406.6
Business	216.5	7.5	495.6	259.9	-	979.4
Dental <sup>(4)</sup>	60.4	29.0	25.3	69.2	-	183.9
Design	58.9	4.3	49.0	48.9	-	161.0
Divinity	45.8	2.9	53.5	35.1	-	137.2
Education	74.4	18.7	189.6	127.8	-	410.5
Government	124.7	76.0	265.4	193.5	-	659.6
Law	115.0	45.1	257.5	216.4	-	633.9
Medical <sup>(4)</sup>	423.3	698.1	589.7	749.5	57.1	2,517.8
Public Health	162.2	323.8	356.0	408.2	-	1,250.1
Radcliffe	-	2.0	58.0	27.1	-	87.1
<b>Allied Institutons</b>	<b>1.0</b>	<b>11.5</b>	<b>270.8</b>	<b>141.0</b>	<b>38.6</b>	<b>462.9</b>
<b>Central Administration</b>	<b>18.7</b>	<b>12.2</b>	<b>1,336.0</b>	<b>715.6</b>	<b>890.3</b>	<b>2,972.7</b>
Core Departments <sup>(2)</sup>	18.7	5.5	700.2	384.2	63.0	1,171.6
Service Departments	-	6.7	635.8	331.4	827.3	1,801.2
<b>Non-Departmental and Special</b>	<b>-</b>	<b>-</b>	<b>316.3</b>	<b>70.3</b>	<b>10.5</b>	<b>397.1</b>
<b>University Total</b>	<b>2,262.2</b>	<b>2,125.6</b>	<b>5,811.6</b>	<b>4,382.6</b>	<b>1,005.0</b>	<b>15,587.0</b>

Head Count	Faculty <sup>(1)</sup>	Other Academic <sup>(3)</sup>	Administrative & Professional	Clerical & Technical	Service & Trades	Grand Total
<b>Faculties</b>	<b>2,415</b>	<b>2,307</b>	<b>4,020</b>	<b>3,636</b>	<b>81</b>	<b>12,459</b>
Arts and Sciences	921	867	1,505	1,356	-	4,649
Engineering and Applied Science	84	183	87	68	9	431
Business	223	8	521	267	-	1,019
Dental <sup>(4)</sup>	68	29	27	73	-	197
Design	81	5	51	51	-	188
Divinity	57	9	57	37	-	160
Education	81	36	199	136	-	452
Government	138	85	271	197	-	691
Law	127	46	271	224	-	668
Medical <sup>(4)</sup>	450	701	604	776	72	2,603
Public Health	185	337	368	423	-	1,313
Radcliffe	-	1	59	28	-	88
<b>Allied Institutons</b>	<b>1</b>	<b>12</b>	<b>279</b>	<b>153</b>	<b>44</b>	<b>489</b>
<b>Central Administration</b>	<b>20</b>	<b>14</b>	<b>1,386</b>	<b>741</b>	<b>994</b>	<b>3,155</b>
Core Departments <sup>(2)</sup>	20	5	711	395	63	1,194
Service Departments	-	9	675	346	931	1,961
<b>Non-Departmental and Special</b>	<b>-</b>	<b>-</b>	<b>319</b>	<b>72</b>	<b>11</b>	<b>402</b>
<b>University Total</b>	<b>2,436</b>	<b>2,333</b>	<b>6,004</b>	<b>4,602</b>	<b>1,130</b>	<b>16,505</b>

(1) See page 20 for definition of faculty.

(2) Most University Professors are appointed in the Office of the President and Provost.

(3) "Other Academic" includes Senior Academic Leaders, Researchers, and other non-instructional academic titles.

(4) The Dental and Medical School "Faculty" counts include all faculty paid by those schools, whether or not they are located on the HMS Quad.

-Counts reflect active, paid appointments as of 10/31/2010. Head Counts are reported by primary appointment.

-Counts are consistent with Harvard's IPEDS Human Resources submission, excluding Graduate Assistants.

SOURCE: HARVARD HUMAN RESOURCES.

## University-Wide Faculty and Staff as of October 31, 2010

By Gender (Head Count)	Faculty <sup>(1)</sup>	Other Academic <sup>(2)</sup>	Administrative & Professional	Clerical & Technical	Service & Trades	Grand Total
Men	1,687	1,409	2,524	1,430	770	7,820
Women	749	924	3,480	3,172	360	8,685
<b>University Total</b>	<b>2,436</b>	<b>2,333</b>	<b>6,004</b>	<b>4,602</b>	<b>1,130</b>	<b>16,505</b>

By Race/Ethnicity (Head Count)	Faculty <sup>(1)</sup>	Other Academic <sup>(2)</sup>	Administrative & Professional	Clerical & Technical	Service & Trades	Grand Total
American Indian or Alaska Native	2	2	7	7	-	18
Asian	277	734	427	329	44	1,811
Black or African American	77	54	210	420	205	966
Hispanic of any Race	83	111	201	335	312	1,042
Native Hawaiian or Other Pacific Islander	2	3	2	5	3	15
Two or More Races	24	15	67	75	9	190
Unknown	13	52	53	54	3	175
White	1,958	1,362	5,037	3,377	554	12,288
<b>University Total</b>	<b>2,436</b>	<b>2,333</b>	<b>6,004</b>	<b>4,602</b>	<b>1,130</b>	<b>16,505</b>

By Location (Head Count)	Faculty <sup>(1)</sup>	Other Academic <sup>(2)</sup>	Administrative & Professional	Clerical & Technical	Service & Trades	Grand Total
Cambridge	1,533	1,250	3,926	2,856	967	10,532
Boston	860	1,046	1,716	1,527	163	5,312
Allston	223	28	721	365	61	1,398
Longwood Medical Area	569	993	938	1,107	84	3,691
Other Boston	68	25	57	55	18	223
Other	43	37	362	219	-	661
<b>University Total</b>	<b>2,436</b>	<b>2,333</b>	<b>6,004</b>	<b>4,602</b>	<b>1,130</b>	<b>16,505</b>

By Funding Type (Full-Time Equivalent)	Faculty <sup>(1)</sup>	Other Academic <sup>(2)</sup>	Administrative & Professional	Clerical & Technical	Service & Trades	Grand Total
Sponsored Funding	260.9	1,365.2	446.5	562.4	-	2,634.9
University Funding	2,001.3	760.4	5,365.1	3,820.2	1,005.0	12,952.0
<b>Total</b>	<b>2,262.2</b>	<b>2,125.6</b>	<b>5,811.6</b>	<b>4,382.6</b>	<b>1,005.0</b>	<b>15,587.0</b>

(1) See page 20 for definition of faculty.

(2) Most University Professors are appointed in the Office of the President and Provost.

(3) "Other Academic" includes Senior Academic Leaders, Researchers, and other non-instructional academic titles.

(4) The Dental and Medical School "Faculty" counts include all faculty paid by those schools, whether or not they are located on the HMS Quad.

-Counts reflect active, paid appointments as of 10/31/2010. Head Counts are reported by primary appointment.

-Counts are consistent with Harvard's IPEDS Human Resources submission, excluding Graduate Assistants.

SOURCE: HARVARD HUMAN RESOURCES.

## Faculty Overview

### Faculty by Harvard School and Tenure/Ladder Category, Fall 2010

Category	University (excludes affiliates)	Arts and Sciences	Engineering	Design	Education	Business	Divinity
Tenured	1,012	484	56	30	25	92	21
Pre-Tenure Ladder	485	158	19	23	21	86	9
Core Non-Ladder	714	369	9	54	37	51	8
Other Non-Ladder	509	32	2	1	42	7	28
<b>Total</b>	<b>2,720</b>	<b>1,043</b>	<b>86</b>	<b>108</b>	<b>125</b>	<b>236</b>	<b>66</b>

Category	Government	Law	Medical	Dental	Public Health	Other	Medical Affiliates
Tenured	54	86	112	6	75	10	796
Pre-Tenure Ladder	19	9	65	19	65	-	3,019
Core Non-Ladder	45	52	67	49	86	2	4,884
Other Non-Ladder	55	15	77	146	163	-	2,264
<b>Total</b>	<b>173</b>	<b>162</b>	<b>321</b>	<b>220</b>	<b>389</b>	<b>12</b>	<b>10,963</b>

The following jobs are included as Faculty (with some exceptions to the categorizations shown):

Tenured Faculty

Professor, Chaired  
 Professor, University  
 Professor

Core Non-Ladder Faculty

Professor of Practice  
 Professor of Practice, Chaired  
 Professor, Clinical  
 Professor, Associate Clinical  
 Professor, Assistant Clinical  
 Lecturer, Senior  
 Lecturer (Faculty)  
 Lecturer  
 Instructor (HMS Only)  
 Critic  
 Preceptor  
 Preceptor, Senior (Faculty)  
 Preceptor (Faculty)  
 Preceptor (Other Faculty)

Other Non-Ladder Faculty

Professor of Practice, Visiting  
 Professor, Visiting  
 Professor, Visiting Assistant  
 Professor, Visiting Associate  
 Professor, Associate Adjunct  
 Professor, Assistant Adjunct  
 Professor, Adjunct  
 Instructor, Adjunct  
 Lecturer, Annual  
 Lecturer, Visiting  
 Lecturer, Adjunct  
 Instructor, Clinical (Other Faculty)  
 Assistant, Clinical

Pre-Tenure Ladder Faculty

Professor, Associate  
 Professor, Associate Chaired  
 Professor, Assistant  
 Professor, Assistant Chaired  
 Instructor, Convertible

-See the "Faculty Job Codes" document on the Faculty Development and Diversity website (<http://faculty.harvard.edu>) for a full listing of faculty jobs at Harvard.

-Includes primary and secondary appointments. Includes paid and non-paid appointments.

-Faculty members are counted once in each School in which they hold an instructional faculty appointment.

-The "University" column contains unduplicated totals and excludes HMS affiliates.

-Counts in this section differ from pages 18-19 because of the inclusion of unpaid and secondary appointments and the distinction between Medical "Quad" and Affiliate faculty.

-SOURCE: Data compiled for Faculty Development and Diversity Annual Report.

## Ladder Faculty Demographics

For more information on faculty diversity, view the complete FD&D annual report: [www.faculty.harvard.edu](http://www.faculty.harvard.edu).

### Ladder Faculty by Gender, Fall 2010

	<b>Total</b>	<b>Men</b>	<b>Women</b>
Faculty of Arts and Sciences - All	642	471	171
Humanities	201	134	67
Natural Sciences	213	172	41
Social Sciences	228	165	63
Engineering and Applied Sciences	75	65	10
Business	178	134	44
Dental	25	21	4
Design	53	37	16
Divinity	30	19	11
Education	46	23	23
Government	73	57	16
Law	95	76	19
Medical	177	138	39
Public Health	140	94	46
Other	10	6	4
University (Unduplicated)	1,497	1,100	397

### Ladder Faculty by Race/Ethnicity, Fall 2010

	<b>Total</b>	<b>Asian</b>	<b>Black or African American</b>	<b>Hispanic</b>	<b>Native American</b>	<b>White</b>
Faculty of Arts and Sciences - All	642	61	21	19	3	538
Humanities	201	16	1	8	1	175
Natural Sciences	213	32	3	7	1	170
Social Sciences	228	13	17	4	1	193
Engineering and Applied Sciences	75	17	-	2	-	56
Business	178	35	3	9	-	131
Dental	25	6	-	1	-	18
Design	53	4	1	6	-	42
Divinity	30	-	2	3	-	25
Education	46	7	4	1	-	34
Government	73	10	2	5	-	56
Law	95	3	7	1	1	83
Medical	177	12	2	5	-	158
Public Health	140	23	4	3	-	110
Other	10	-	3	-	-	7
University (Unduplicated)	1,497	176	46	50	4	1,221

-Includes primary and secondary appointments. Includes paid and non-paid appointments.

-Faculty members are counted once in each School in which they hold an instructional faculty appointment.

-The "University" column contains unduplicated totals and excludes HMS affiliates.

-Counts in this section differ from pages 18-19 because of the inclusion of unpaid and secondary appointments and the distinction between Medical "Quad" and Affiliate faculty.

-SOURCE: Data compiled for Faculty Development and Diversity Annual Report.

Tuition at Harvard Schools: FY1991 – FY2011<sup>(1)</sup>

Academic Year	College	GSAS	Business	Design	Divinity	Education	Government <sup>(2)</sup>	Law	Medical/Dental <sup>(3)</sup>	Public Health <sup>(4)</sup>
1991	13,960	13,960	16,400	14,300	9,200	13,152	13,390	14,475	18,030	13,570
1992	14,860	14,860	17,500	15,450	9,940	14,192	14,662	15,560	19,110	14,790
1993	15,870	15,870	18,550	16,650	10,540	15,044	15,690	16,730	20,257	15,675
1994	16,856	16,856	19,750	17,483	11,070	15,796	16,631	17,750	21,260	16,775
1995	17,851	17,851	21,000	18,360	11,630	16,664	17,710	19,080	22,300	17,770
1996	18,838	18,838	22,700	19,276	12,220	17,581	18,650	20,500	23,192	18,840
1997	19,770	19,770	23,840	20,240	12,830	18,460	19,770	21,700	24,150	19,800
1998	20,600	20,600	25,000	21,252	13,480	19,476	20,720	22,800	25,200	20,890
1999	21,342	21,342	26,260	22,208	14,160	20,430	21,656	23,900	26,000	21,895
2000	22,054	22,054	27,250	23,163	14,870	21,410	22,520	25,000	27,000	22,950
2001	22,694	22,694	28,500	24,159	15,620	22,600	23,400	26,000	28,000	23,980
2002	23,457	23,370	30,050	25,195	16,400	23,720	24,320	27,500	29,000	25,050
2003	24,630	24,630	31,800	26,330	17,220	25,144	26,488	29,500	30,500	26,300
2004	26,066	26,066	33,650	27,910	18,080	26,628	28,580	31,250	32,000	27,670
2005	27,448	27,448	35,600	29,500	18,984	28,092	30,272	33,120	34,250	29,300
2006	28,752	28,752	37,500	30,916	19,920	29,360	31,752	35,100	35,800	30,620
2007	30,275	30,275	39,600	32,152	20,712	30,544	33,276	37,100	37,200	31,800
2008	31,456	31,456	41,900	33,438	21,544	31,696	34,807	39,325	38,600	34,085
2009	32,557	32,556	43,800	34,608	22,080	32,896	36,168	41,500	39,900	35,403
2010	33,696	33,696	46,150	35,992	22,856	34,208	37,576	43,900	42,500	36,125
2011	\$34,976	\$34,976	\$48,600	\$37,432	\$23,544	\$35,568	\$39,041	\$45,450	\$45,050	\$37,230

## Compound Annual Growth Rates

	College	GSAS	Business	Design	Divinity	Education	Government	Law	Medical/Dental	Public Health
20 YEAR	4.7%	4.7%	5.6%	4.9%	4.8%	5.1%	5.5%	5.9%	4.7%	5.2%
10 YEAR	4.4%	4.4%	5.5%	4.5%	4.2%	4.6%	5.3%	5.7%	4.9%	4.5%
5 YEAR	4.0%	4.0%	5.3%	3.9%	3.4%	3.9%	4.2%	5.3%	4.7%	4.0%
1 YEAR	3.8%	3.8%	5.3%	4.0%	3.0%	4.0%	3.9%	3.5%	6.0%	3.1%

(1) All amounts exclude the University Health Service fee.

(2) For FY2003 and FY2004, the School of Government implemented two tuition rate increases: one for first-year students (shown above) and one for returning students (FY2003 is \$25,440 and FY2004 is \$27,704).

(3) Dental School tuition is \$35,790 for FY2006 and \$26,050 for FY1999.

(4) Beginning in FY2008, HSPH implemented different full-time tuition amounts for one-year programs (MPH, MS 1-year) and multiple-year programs (MS 2-year and DS). Amount shown in table is for one-year programs.

Full-time tuition for two-year Master's programs for FY2010 is \$34,000 and for FY2011 is \$35,040.

SOURCE: ANNUAL TUITION PROPOSALS APPROVED BY THE CORPORATION.

## Undergraduate Tuition Over Time: FY1991 - FY2011

Academic Year	Undergraduate Package						Economic Indicators			
	Health Services			Student Services			CPI-U (1982-84=100)		HEPI	Median Family Income
	Tuition	Fee	Room	Board	Fee	Total	US	Boston (1983=100)	(1983=100)	Ages 45-54
<b>1990-91</b>	13,960	490	2,700	2,425	1,080	20,655	130.7	138.9	140.8	46,101
<b>1991-92</b>	14,860	550	2,900	2,620	1,150	22,080	136.2	145.0	148.1	47,164
<b>1992-93</b>	15,870	584	3,075	2,765	1,220	23,514	140.3	148.6	153.4	49,606
<b>1993-94</b>	16,856	614	3,225	2,910	1,275	24,880	144.5	152.9	157.9	50,079
<b>1994-95</b>	17,851	634	3,370	3,040	1,335	26,230	148.2	154.9	163.3	52,034
<b>1995-96</b>	18,838	634	3,510	3,200	1,393	27,575	152.4	158.6	168.3	54,379
<b>1996-97</b>	19,770	654	3,659	3,336	1,477	28,896	156.9	163.3	173.3	55,029
<b>1997-98</b>	20,600	666	3,808	3,470	1,536	30,080	160.5	167.9	178.6	57,161
<b>1998-99</b>	21,342	686	3,940	3,574	1,590	31,132	163.0	171.7	184.9	59,959
<b>1999-00</b>	22,054	711	4,072	3,685	1,642	32,164	166.6	176.0	189.1	61,833
<b>2000-01</b>	22,694	745	4,190	3,792	1,689	33,110	172.2	183.6	196.9	65,303
<b>2001-02</b>	23,457	816	4,331	3,919	1,746	34,269	177.1	191.5	206.5	68,082
<b>2002-03</b>	24,630	1,020	4,461	4,041	1,798	35,950	179.9	196.5	212.7	68,114
<b>2003-04</b>	26,066	1,142	4,706	4,162	1,852	37,928	184.0	203.9	223.5	69,180
<b>2004-05</b>	27,448	1,264	4,974	4,286	1,908	39,880	188.9	209.5	231.7	70,149
<b>2005-06</b>	28,752	1,370	5,148	4,430	1,975	41,675	195.3	216.4	240.8	71,002
<b>2006-07</b>	30,275	1,390	5,328	4,618	2,044	43,655	201.6	223.1	253.1	72,881
<b>2007-08</b>	31,456	1,426	5,856	4,766	2,116	45,620	207.3	227.4	260.3	75,692
<b>2008-09</b>	32,557	1,426	6,060	4,982	2,190	47,215	215.3	235.4	273.2	77,440
<b>2009-10</b>	33,696	1,126	7,248	4,608	2,190	48,868	214.5	233.8	279.3	75,651
<b>2010-11</b>	\$34,976	\$1,166	\$7,525	\$4,783	\$2,273	\$50,723	218.1	237.4	281.8	\$75,707

## Compound Annual Growth Rates

	Undergraduate Package						Economic Indicators <sup>(1)</sup>			
	Health Services			Student Services			CPI-U (1982-84=100)		HEPI	Median Family Income
	Tuition	Fee	Room	Board	Fee	Total	US	Boston (1983=100)	(1983=100)	Ages 45-54
<b>20 YEAR</b>	4.7%	4.4%	5.3%	3.5%	3.8%	4.6%	2.6%	2.7%	3.5%	2.5%
<b>10 YEAR</b>	4.4%	4.6%	6.0%	2.3%	3.0%	4.4%	2.4%	2.6%	3.7%	1.5%
<b>5 YEAR</b>	4.0%	-3.2%	7.9%	1.5%	2.9%	4.0%	2.2%	1.9%	3.2%	1.3%
<b>1 YEAR</b>	3.8%	3.6%	3.8%	3.8%	3.8%	3.8%	1.6%	1.6%	0.9%	0.1%

(1) Economic Indicators are based on the most recent indicators available at time of publication.

SOURCE: BUREAU OF LABOR STATISTICS, US CENSUS BUREAU, COMMONFUND INSTITUTE.



Degree Student Financial Assistance: FY2010 <sup>(1)</sup>

Expressed in thousands of dollars

## GRANTS

	Other			Total	Grants as a
	Institutional	Federal	Outside		% of Total
					School Aid
College	\$140,887	\$8,974	\$10,755	\$160,616	88.6%
GSAS	88,033	\$21,733	\$12,635	122,402	75.3%
Business <sup>(2)</sup>	28,391	\$1,692	\$2,072	32,155	41.5%
Dental	1,312	\$26	\$50	1,388	14.4%
Design	8,635	\$5	\$946	9,585	47.3%
Divinity	9,210	\$7	\$246	9,462	72.9%
Education	11,279	\$189	\$1,799	13,267	48.4%
Government	17,792	\$902	\$6,712	25,406	62.6%
Law	17,680	\$605	\$3,130	21,415	26.0%
Medical	13,948	\$2,616	\$2,054	18,619	58.9%
Public Health	9,652	\$2,905	\$3,561	16,117	67.7%
Extension	1,020	\$493	\$66	1,579	15.2%
<b>TOTAL</b>	<b>\$347,839</b>	<b>\$40,147</b>	<b>\$44,025</b>	<b>\$432,011</b>	<b>63.5%</b>

## Grants

Institutional grants are from University unrestricted and restricted monies.

Federal grants include all Federal programs in each school including programs such as the Pell grant, SEOG or graduate training grants.

Outside grants include state and private support of students. In some schools, these numbers may include corporate sponsorship or other sponsored billing.

## LOANS

	Other			Total	Loans as a
	Institutional	Federal	Outside		% of Total
					School Aid
College <sup>(3)</sup>	\$4,403	\$7,955	\$1,967	\$14,325	7.9%
GSAS	-	1,410	191	1,601	1.0%
Business	-	26,550	18,808	45,358	58.5%
Dental	153	7,417	683	8,253	85.6%
Design	47	9,120	899	10,067	49.6%
Divinity	34	2,921	-	2,955	22.8%
Education	99	13,123	240	13,462	49.2%
Government	275	12,277	1,168	13,720	33.8%
Law	1,882	54,662	3,455	59,999	72.7%
Medical	3,501	9,147	313	12,961	41.0%
Public Health	126	5,306	2,190	7,623	32.0%
Extension	-	7,308	1,483	8,792	84.8%
<b>TOTAL</b>	<b>\$10,521</b>	<b>\$157,195</b>	<b>\$31,398</b>	<b>\$199,114</b>	<b>29.3%</b>

## Loans

Institutional loans are made to students from University capital without Federal guarantee.

Federal loan programs may involve capital from Harvard, or other private or Federal sources, loaned under Federal sponsorship such as Perkins, Direct Loans and FFEL programs.

Outside loans include private capital loaned to students or parents. It excludes personal loans.

## EMPLOYMENT

	Employment as			a % of Total	Grant, Loans & Employment
	Federal	Other	Total		
	Work-Study	Term			
College	\$887	\$5,458	\$6,345	3.5%	\$181,286
GSAS	479	38,143	38,622	23.7%	162,625
Business	-	-	-	0.0%	77,513
Dental	-	-	-	0.0%	9,640
Design	475	156	631	3.1%	20,283
Divinity	565	-	565	4.4%	12,982
Education	658	-	658	2.4%	27,387
Government	261	1,172	1,433	3.5%	40,559
Law	645	453	1,098	1.3%	82,511
Medical	33	-	33	0.1%	31,612
Public Health	54	-	54	0.2%	23,794
Extension	-	-	-	0.0%	10,371
<b>TOTAL</b>	<b>\$4,056</b>	<b>\$45,383</b>	<b>\$49,439</b>	<b>7.3%</b>	<b>\$680,564</b>

## Employment

Work-Study is a Federally-sponsored partnership with colleges and universities to provide students with the opportunity to work while in school.

Other term earnings reflect on-campus earnings by students who are not part of the work-study program. Jobs include casual employment (to the extent known), teaching fellowships, research assistantships and resident tutors.

(1) Amounts do not include the Business School, Law School, Medical School or the School of Government funding for graduates in the

Low Income Protection Plan/Loan Repayment Assistance Programs. As of FY10, data for Federal Loans excludes the loan fee.

(2) Total excludes students receiving \$10,572,794 in financial aid through employee assistance or sponsored billing.

(3) College total for loans includes \$9,213,512 in PLUS Loans and other Parental Loans.

SOURCE: INTERNAL SURVEY

# Federal Sponsored Research: FY2009- FY2010

Expressed in thousands of dollars

FACULTIES	FY2009			FY2010			Change in Total Exp. 2009/2010	FY2010 Eff. Indirect Cost Rate <sup>(1)</sup>
	Direct Costs	Indirect Costs	Total Costs	Direct Costs	Indirect Costs	Total Costs		
<b>Faculty of Arts &amp; Sciences <sup>(2)</sup></b>	\$62,472	\$28,265	<b>\$90,737</b>	\$72,935	\$34,381	<b>\$107,316</b>	18.3%	<b>47.1%</b>
<b>Engineering and Applied Sciences <sup>(3)</sup></b>	19,978	8,790	<b>28,768</b>	22,698	11,077	<b>33,775</b>	17.4%	<b>48.8%</b>
<b>Business</b>	-	-	-	8	-	<b>8</b>		
<b>Dental</b>	4,076	2,169	<b>6,245</b>	5,218	2,938	<b>8,156</b>	30.6%	<b>56.3%</b>
<b>Design</b>	-	-	-	19	-	<b>19</b>	-	-
<b>Education</b>	2,575	797	<b>3,372</b>	4,356	1,379	<b>5,735</b>	70.1%	<b>31.7%</b>
<b>Government</b>	3,829	1,107	<b>4,936</b>	3,777	1,273	<b>5,050</b>	2.3%	<b>33.7%</b>
<b>Law School</b>	745	354	<b>1,099</b>	576	144	<b>720</b>	(34.5%)	<b>25.0%</b>
<b>Medical</b>	153,443	59,204	<b>212,647</b>	172,781	67,475	<b>240,256</b>	13.0%	<b>39.1%</b>
<b>Public Health</b>	167,868	38,116	<b>205,984</b>	169,344	38,444	<b>207,788</b>	0.9%	<b>22.7%</b>
<b>Faculties Subtotal</b>	<b>\$414,987</b>	<b>\$138,801</b>	<b>\$553,788</b>	<b>\$451,712</b>	<b>\$157,111</b>	<b>\$608,823</b>	<b>9.9%</b>	<b>34.8%</b>
<b>Other Departments <sup>(4)</sup></b>	<b>\$551</b>	<b>\$203</b>	<b>\$754</b>	<b>\$2,877</b>	<b>\$404</b>	<b>\$3,281</b>	<b>335.1%</b>	<b>14.0%</b>
<b>GRAND TOTAL <sup>(5)</sup></b>	<b>\$415,538</b>	<b>\$139,004</b>	<b>\$554,542</b>	<b>\$454,589</b>	<b>\$157,515</b>	<b>\$612,104</b>	<b>10.4%</b>	<b>34.6%</b>

(1) The effective rate is the indirect costs as a percentage of total direct costs.

(2) Includes FAS Interfaculty Initiatives.

(3) Includes SEAS Interfaculty Initiatives

(4) Includes Arnold Arboretum, College Library, Central Administration, Harvard University Art Museums, Joint Center for Housing Studies, President's Initiatives, and University Interfaculty Initiatives.

(5) Totals include both Federal and Federal Once-Removed (Federal Once-Removed total cost for FY2009 is \$55,444 and for FY2010 is \$62,277). Totals exclude financial aid and agency funds.

SOURCE: OFFICE FOR SPONSORED PROGRAMS - ANNUAL REPORT

## Federal Research by Agency: FY2009 - FY2010

Expressed in thousands of dollars

	FY2009	FY2010	% Change	FY2010 Total as % of Federal Total
<b>Department of Health &amp; Human Services</b>				
National Institutes of Health	\$380,767	\$431,176	13.2%	70.4%
Other DHHS	82,165	78,397	(4.6%)	12.8%
<b>Subtotal</b>	<b>\$462,932</b>	<b>\$509,573</b>	<b>10.1%</b>	<b>83.2%</b>
<b>Department of Defense</b>				
Defense Advanced Research Projects Agency <sup>(1)</sup>	9,768	10,387	6.3%	1.7%
Department of the Army	4,784	3,104	(35.1%)	0.5%
Department of the Navy	1,342	3,257	142.7%	0.5%
Department of the Air Force <sup>(2)</sup>	5,847	7,860	34.4%	1.3%
<b>Subtotal</b>	<b>\$21,741</b>	<b>\$24,608</b>	<b>13.2%</b>	<b>4.0%</b>
<b>National Science Foundation</b>	38,304	42,074	9.8%	6.9%
<b>Department of Energy</b>	7,436	9,499	27.7%	1.6%
<b>National Aeronautics &amp; Space Administration</b>	7,209	9,482	31.5%	1.5%
<b>Department of Education</b>	3,035	5,114	68.5%	0.8%
<b>Environmental Protection Agency</b>	3,917	3,403	(13.1%)	0.6%
<b>Department of State</b>	2,664	2,326	(12.7%)	0.4%
<b>Agency for International Development</b>	1,123	1,034	(7.9%)	0.2%
<b>Department of Veterans Affairs</b>	1,251	767	(38.7%)	0.1%
<b>Department of Transportation</b>	829	732	(11.7%)	0.1%
<b>Central Intelligence Agency</b>	876	565	(35.5%)	0.1%
<b>Department of Justice</b>	484	528	9.1%	0.1%
<b>Department of Commerce</b>	396	427	7.8%	0.1%
<b>National Endowment for the Humanities</b>	351	274	(21.9%)	0.0%
<b>Department of Homeland Security</b>	204	262	28.4%	0.0%
<b>Neighborhood Reinvestment Corporation</b>	395	210	(46.8%)	0.0%
<b>Department of Interior</b>	334	120	(64.1%)	0.0%
<b>Smithsonian Institution</b>	226	117	(48.2%)	0.0%
<b>Department of Agriculture</b>	166	108	(34.9%)	0.0%
<b>Department of Housing and Urban Development</b>	232	69	(70.3%)	0.0%
<b>Library of Congress</b>	28	66	135.7%	0.0%
<b>Other Federal Agencies</b>	410	746	82.0%	0.1%
<b>GRAND TOTAL <sup>(3)</sup></b>	<b>\$554,542</b>	<b>\$612,104</b>	<b>10.4%</b>	<b>100.0%</b>

(1) Includes Other - Department of Defense.

(2) Includes Air Force Office of Scientific Research

(3) Totals include both Federal and Federal Once-Removed (Federal Once-Removed total cost for FY2009 is \$55,444 and for FY2010 is \$62,277). Totals exclude financial aid and agency funds.

SOURCE: OFFICE FOR SPONSORED PROGRAMS

## Non-Federal Sponsored Research: FY2009 - FY2010

Expressed in thousands of dollars

FACULTIES	FY2009			FY2010			Change in Total Exp. 2009/2010	FY2010 Eff. Indirect Cost Rate <sup>(1)</sup>
	Direct Costs	Indirect Costs	Total Costs	Direct Costs	Indirect Costs	Total Costs		
<b>Faculty of Arts &amp; Sciences <sup>(2)</sup></b>	\$31,860	\$3,249	<b>\$35,109</b>	\$35,473	\$3,891	<b>\$39,364</b>	12.1%	11.0%
Engineering and Applied Sciences	5,685	1,859	<b>7,543</b>	6,007	2,445	<b>8,452</b>	12.0%	40.7%
Business	6	-	<b>6</b>	23	-	<b>23</b>	269.3%	0.0%
Dental	629	86	<b>715</b>	148	10	<b>158</b>	(77.9%)	6.8%
Design	347	38	<b>385</b>	367	59	<b>426</b>	10.7%	16.1%
Divinity	202	20	<b>222</b>	104	10	<b>114</b>	(48.7%)	9.6%
Education	8,934	983	<b>9,917</b>	10,894	1,047	<b>11,941</b>	20.4%	9.6%
Government	18,337	2,647	<b>20,984</b>	17,611	2,662	<b>20,273</b>	(3.4%)	15.1%
Law	4,819	274	<b>5,093</b>	5,190	327	<b>5,517</b>	8.3%	6.3%
Medical	30,755	4,418	<b>35,173</b>	31,571	4,949	<b>36,520</b>	3.8%	15.7%
Public Health	28,790	3,719	<b>32,509</b>	28,229	3,996	<b>32,225</b>	(0.9%)	14.2%
Radcliffe Institute for Advanced Study	16	-	<b>16</b>	32	-	<b>32</b>	100.1%	0.0%
<b>Faculties Subtotal</b>	<b>\$130,379</b>	<b>\$17,294</b>	<b>\$147,673</b>	<b>\$135,649</b>	<b>\$19,396</b>	<b>\$155,045</b>	<b>5.0%</b>	<b>14.3%</b>
<b>Other Departments <sup>(3)</sup></b>	<b>\$2,722</b>	<b>\$137</b>	<b>\$2,859</b>	<b>\$2,299</b>	<b>\$97</b>	<b>\$2,396</b>	<b>(16.2%)</b>	<b>4.2%</b>
<b>GRAND TOTAL <sup>(4)</sup></b>	<b>\$133,101</b>	<b>\$17,431</b>	<b>\$150,532</b>	<b>\$137,948</b>	<b>\$19,493</b>	<b>\$157,441</b>	<b>4.6%</b>	<b>14.1%</b>

(1) The effective rate is the indirect cost as a percentage of total direct cost.

(2) Includes FAS Interfaculty Initiatives.

(3) Includes Harvard University Art Museums, Joint Center for Housing Studies, Nieman Foundation, Villa I Tatti, University Library, Arnold Arboretum (FY10 only), University Health Services (FY10 only), and University Interfaculty Initiatives.

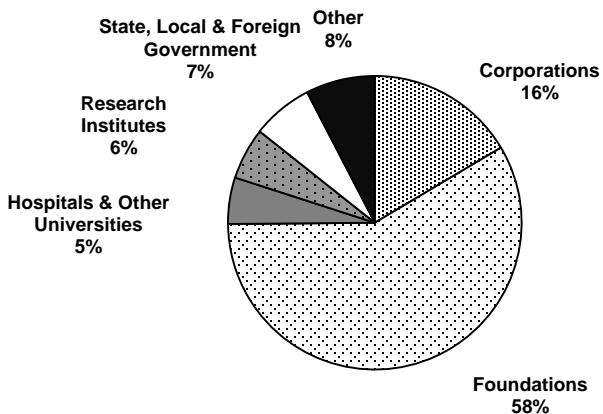
(4) Total excludes financial aid expenditures and agency funds.

SOURCE: OFFICE FOR SPONSORED PROGRAMS - ANNUAL REPORT

### Non-Federal Expenditures by Sponsor Type: FY2010

Expressed in thousands of dollars

	Corporations	Foundations	Hospitals & Other Universities	Research Institutes	State, Local, & Foreign Government	Other Sources	Total
Faculty of Arts & Sciences <sup>(1)</sup>	\$6,992	\$25,145	\$1,361	\$2,027	\$1,838	\$2,001	\$39,364
Engineering and Applied Sciences	4,663	1,167	1,503	486	418	215	8,452
Business	-	23	-	-	-	-	23
Dental	59	98	-	-	-	-	157
Design	3	96	-	113	15	199	426
Divinity	-	114	-	-	-	-	114
Education	93	10,980	-	24	98	746	11,941
Government	2,121	10,455	212	1,378	3,310	2,797	20,273
Law	80	5,337	0	83	8	10	5,518
Medical	7,924	20,766	1,893	1,554	1,655	2,728	36,520
Public Health	3,968	15,690	3,122	3,169	3,201	3,075	32,225
Radcliffe Institute for Advanced Study	-	32	-	-	-	-	32
<b>Faculties Subtotal</b>	<b>\$25,903</b>	<b>\$89,903</b>	<b>\$8,091</b>	<b>\$8,834</b>	<b>\$10,543</b>	<b>\$11,771</b>	<b>\$155,045</b>
Other Departments <sup>(2)</sup>	\$0	\$2,038	(\$16)	\$138	\$7	\$229	\$2,396
<b>GRAND TOTAL <sup>(3)</sup></b>	<b>\$25,903</b>	<b>\$91,941</b>	<b>\$8,075</b>	<b>\$8,972</b>	<b>\$10,550</b>	<b>\$12,000</b>	<b>\$157,441</b>



(1) Includes FAS Interfaculty Initiatives

(2) Includes Arnold Arboretum, Harvard University Art Museums, Joint Center for Housing Studies, Nieman Foundation, Villa I Tatti, University Interfaculty Initiatives, University Health Services, and University Library.

(3) Total excludes financial aid expenditures and agency funds.

SOURCE: OFFICE FOR SPONSORED PROGRAMS

## Historical Funding of Research by Sponsor

Expressed in thousands of dollars

### Federal (Prime and Once-Removed)

	Fiscal Year				
	2006	2007	2008	2009	2010
National Institutes of Health	\$362,878	\$344,832	\$351,206	\$380,767	\$431,176
Other DHHS	41,560	66,529	82,578	82,165	78,397
National Science Foundation	38,162	35,886	36,931	38,304	42,074
Department of Defense	23,059	19,451	19,891	21,741	24,608
Department of Energy	11,747	12,037	8,513	7,436	9,499
Nat'l. Aeronautics & Space Administration	9,324	10,170	9,934	7,209	9,482
Department of Education	6,242	4,157	2,503	3,035	5,114
Environmental Protection Agency	5,983	5,011	4,230	3,917	3,403
Department of State	1,796	1,658	2,603	2,664	2,326
Agency for International Development	7,598	5,963	3,626	1,123	1,034
Department of Commerce	1,164	1,258	396	395	427
Other <sup>(1)</sup>	4,178	4,305	6,289	5,786	4,564
<b>Federal Total</b>	<b>\$513,692</b>	<b>\$511,255</b>	<b>\$528,700</b>	<b>\$554,542</b>	<b>\$612,104</b>

### Non-Federal

	2006	2007	2008	2009	2010
Foundations	\$74,129	\$72,906	\$81,456	\$91,836	\$91,941
Corporations	9,147	15,588	19,786	24,339	25,903
Other Sources	5,195	8,879	9,144	9,386	12,000
State, Local & Foreign Government	12,154	13,142	10,585	11,120	10,550
Research Institutes	6,773	3,825	4,801	6,532	8,972
Hospitals & Other Universities	2,868	4,537	5,609	7,319	8,075
<b>Non-Federal Total</b>	<b>\$110,266</b>	<b>\$118,878</b>	<b>\$131,381</b>	<b>\$150,532</b>	<b>\$157,441</b>
<b>GRAND TOTAL <sup>(2)</sup></b>	<b>\$623,958</b>	<b>\$630,133</b>	<b>\$660,081</b>	<b>\$705,074</b>	<b>\$769,545</b>

### Growth in Sponsored Projects

Expressed in millions of dollars

Fiscal Year	Expenditure Actual \$	% Change	Expressed as FY10 \$	% Change in FY10 \$
2006	\$624.0	-	\$679.6	-
2007	630.1	1.0%	669.0	(1.6%)
2008	660.1	4.8%	675.8	1.0%
2009	705.1	6.8%	711.9	5.3%
2010	\$769.5	9.1%	\$769.5	8.1%

(1) Agencies listed on this exhibit are based on FY2010 expenditures. Information on agencies in prior years can be obtained from the Office for Sponsored Programs.

(2) Total excludes financial aid expenditures and agency funds.

SOURCE: OFFICE FOR SPONSORED PROGRAMS - ANNUAL REPORT

## Harvard Library: FY2010

Harvard's library system now includes more than 70 separate library units, which are operated by nearly 1,000 full-time employees who provide a range of services that ensure access to 16.8 million volumes, 15.8 million digital files, 100,000 serial titles, 8 million photographs, and an estimated 400 million manuscript items.

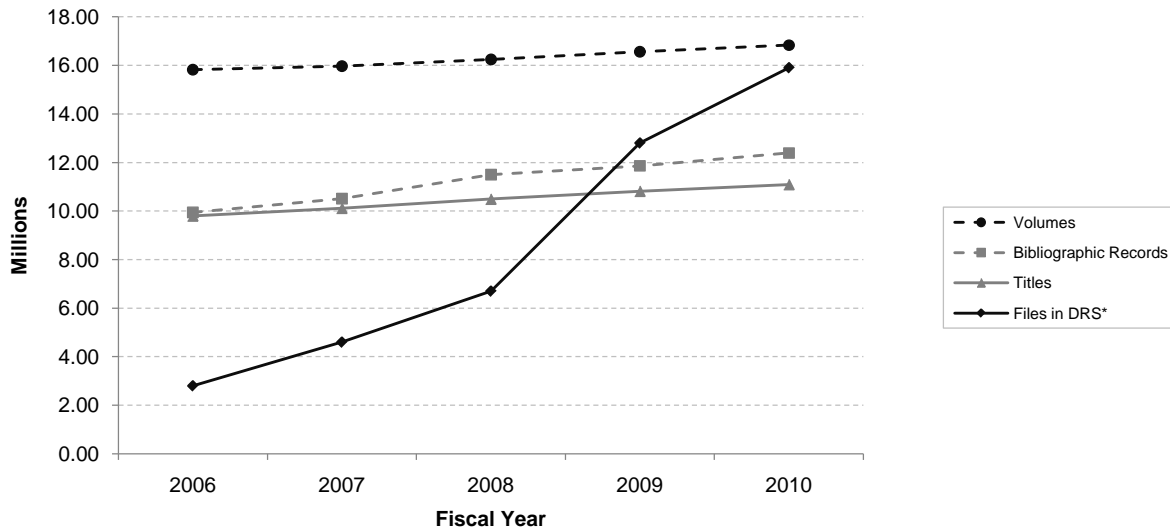
Even these impressive numbers fail to do justice to the importance of the library system for Harvard. For many students, faculty members, and departments, Harvard library collections are at the core of their intellectual experience. Harvard's libraries are not only a local strength, but also a global treasure that supports the scholarly work of an untold number of researchers worldwide.

The Harvard Library's annual report for 1919–1920 established the combined count of books and pamphlets as the essential metric for the University's library holdings. For generations, Harvard has supplied this and other statistics requested by the Association of Research Libraries, which compiles them from its entire membership and prepares the annual "rankings" of the member libraries. By several metrics, including the volume count, Harvard's Library is the largest of the ARL member libraries.

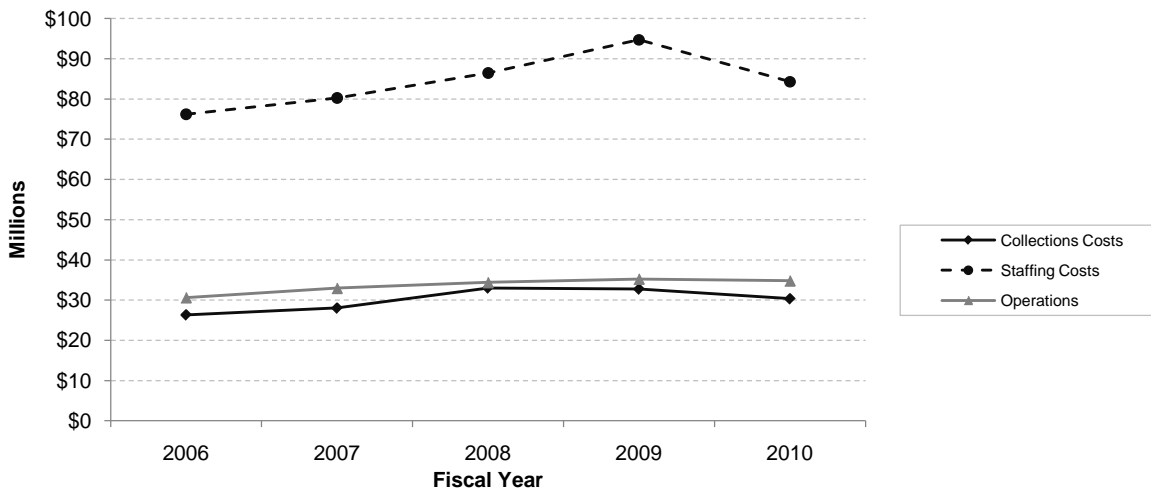
Throughout the ARL assessment community, there is a growing conviction that titles (or bibliographic records) provide a clearer, more accurate, more replicable statistic than volumes.

For the 2009–2010 academic year, we can estimate the Harvard Library's volume count at 16.8 million, and we can document the Library's title count at 11.1 million. In the interest of clear metrics, accountability, and best practices, the Harvard Library will shift its statistical emphasis from volumes to titles beginning in the 2010–2011 academic year.

### Volumes, Records, Titles, and Digital Files



### Total Expenditures



\*Digital Repository Service  
SOURCE: HARVARD LIBRARY OFFICE OF THE EXECUTIVE DIRECTOR

# Harvard Library: FY2010

Collections as of June 30, 2010

Expressed in thousands unless otherwise noted

## Formats

Metric	FY 2009	FY 2010	Change
Manuscript items	–	400,000 *	0%
Volumes	16,500	16,800	2%
Bibliographic records	11,800	12,400	5%
Titles	10,800	11,100	3%
Microforms	–	10,000 *	0%
Photographs	–	8,000 *	0%
Items circulated	2,000	1,500	-33%
E-Resources	370	607	64%
Serial titles	132	158	19%

\* Numbers provided for manuscript items, microforms, and photographs are estimated based on prior surveys.

## Digital Repository Service (DRS)

Metric	FY 2009	FY 2010	Change
Files	12,415	15,888	28%
Disk storage (gigabytes)	96,467	115,308	20%

## Harvard Online Library Information System (HOLLIS)

Metric	FY 2009	FY 2010	Change
Records	11,862	13,421	13%
Searches	5,334	5,053	-6%

Based on a new, user-centric discovery platform, Harvard launched a new version of the HOLLIS union catalog in 2009.

## Visual Information Access (VIA)

Metric	FY 2009	FY 2010	Change
Records	589	678	15%
Records including digital images	457	545	19%
Searches	153	138	-10%
Number of images	2,019	3,109	54%

## Online Archival Search Information System (OASIS)

Metric	FY 2009	FY 2010	Change
Records (finding aids)	4.2	4.5	6%
Sessions	588.4	480.4	-18%
Searches	61.4	58.5	-5%
Finding aids displayed	66.3	104.8	58%



## Physical Plant: FY2010

The University owns and operates more than six hundred buildings of varying sizes and characteristics, spread over a wide geographic area. They encompass approximately 25.8 million gross square feet of space. The physical plant provides living space for students and faculty, research facilities to advance our base of knowledge, classroom and library spaces for the dissemination of knowledge, and space for administrative and support services.

Location <sup>(1)</sup>	Gross Square Footage <sup>(2)</sup> of		Principal Activity on Site
	Acres	Buildings (in 000's)	
Cambridge, MA	210	15,456	Main Campus
Boston, MA	22	3,182	Medical & Dental Schools; School of Public Health
Boston (Allston)	359	5,135	Business School; University Publisher; Athletics, Other
Boston (Jamaica Plain)	238	54	Arnold Arboretum
Watertown MA	14	1,118	Arsenal Buildings
Weston, MA	69	11	Case Estates (Arnold Arboretum)
Somerville, MA	2	96	Affiliated Housing
Medford, MA	1		
Bedford, MA	79	11	Concord Field Station
Carlisle, MA	69		Concord Field Station
Concord, MA	605		Field Station (Museum of Comparative Zoology)
Marlborough, MA	43		Animal Research Center (NERPC)
Southborough, MA	87	308	Harvard Depository
Petersham, MA	2857	73	Harvard Forest (Forestry, Botany)
Hamilton, MA	98		Harvard Forest
Phillipston, MA	204		Harvard Forest
Royalston, MA	57		Harvard Forest
Harvard, MA	37	19	Agassiz Cottage (Observatory)
Shrewsbury, MA	6	16	Artemas Ward Homestead (Museum)
Kittery Point, ME	2	6	Howells Memorial
Ledyard, CT	n/a	21	Red Top Crew Quarters
Washington, DC	17	225	Dumbarton Oaks & Center for Hellenic Studies
Florence & Fiesole, Italy	n/a	94	Villa I Tatti (Center for Italian Renaissance Studies)
Sardis, Turkey	n/a	6	HUAM Archaeological Site
<b>TOTAL</b>	<b>5,076</b>	<b>25,832</b>	

(1) In addition to locations listed above, Harvard has numerous smaller holdings.

(2) As of FY2007, square footage figures are reported according to National Center for Education Statistics Postsecondary Education Facilities Inventory and Classification Manual (FICM) standards. Therefore, values may differ from previous years.

SOURCE: HARVARD REAL ESTATE SERVICES

# Physical Plant: FY2010

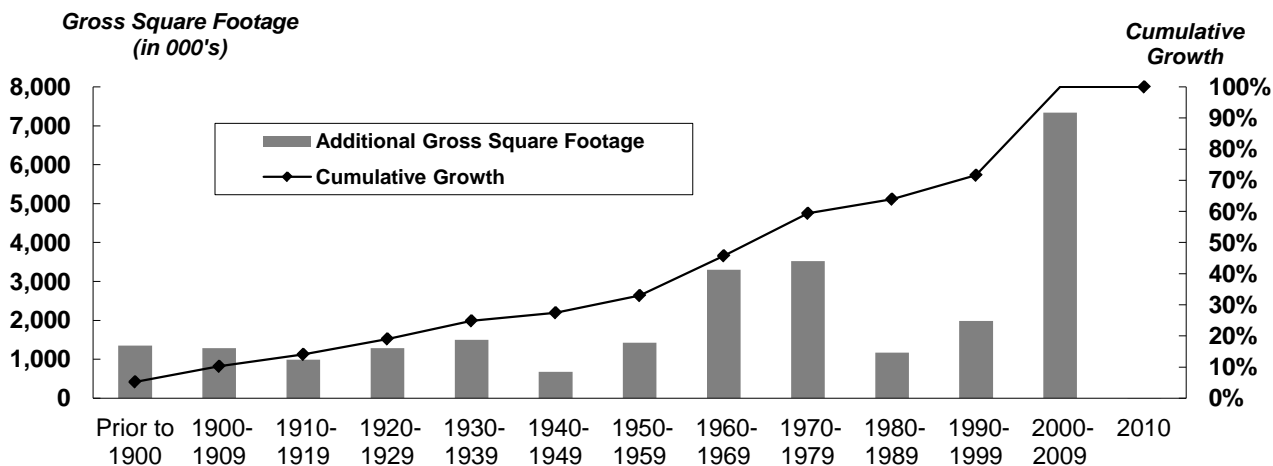
## Building Ownership

	Number of Buildings	Gross Square Footage	
		of Buildings (in 000's)	As a % of Total
FAS <sup>(1)</sup>	258	9,273	35.9%
SEAS <sup>(2)</sup>	5	337	1.3%
Business	33	1,554	6.0%
Dental	2	102	0.4%
Design	3	181	0.7%
Divinity	7	189	0.7%
Education	6	223	0.9%
Government	6	275	1.1%
Law	21	926	3.6%
Medical	26	2,529	9.8%
Radcliffe	15	286	1.1%
Public Health	7	589	2.3%
Real Estate	223	7,919	30.7%
Central Administration	48	1,451	5.6%
<b>TOTAL</b>	<b>660</b>	<b>25,832</b>	<b>100.0%</b>

## Primary Uses

	Gross Square Footage	
	of Buildings (in 000's)	As a % of Total
Residential/Dormitory	7,656	29.6%
Lab/Studio	4,966	19.2%
Office/Classroom	4,771	18.5%
Commercial	3,081	11.9%
Support	1,604	6.2%
Library	1,537	6.0%
Assembly/Museum	1,253	4.9%
Athletic	847	3.3%
Health Care	118	0.5%
<b>TOTAL</b>	<b>25,832</b>	<b>100.0%</b>

## Additions to the Physical Plant



(1) Faculty of Arts and Sciences.

(2) School of Engineering and Applied Sciences.

SOURCE: HARVARD REAL ESTATE SERVICES

## Summary of Environmental Performance at Harvard

### Greenhouse Gas Emissions from Harvard University by Location: FY2010

	2010 Baseline Emissions (MTCDE) <sup>(1)</sup>	% Change Baseline Emissions (MTCDE) FY06-10	2010 Total Emissions (MTCDE)	% Change Total Emissions (MTCDE) FY06-10
Faculty of Arts and Sciences	70,127	-23.0%	87,553	-5.1%
Engineering and Applied Sciences	5,466	-5.4%	5,466	-5.4%
Business	14,123	-37.1%	14,150	-37.0%
Design	1,605	-13.7%	1,605	-13.7%
Divinity	1,019	-25.7%	1,019	-25.7%
Education*	1,717	-16.1%	1,847	-9.8%
Government	2,232	-17.0%	2,232	-17.0%
Law	6,242	-29.5%	7,217	-20.8%
Radcliffe*	1,629	-16.2%	1,629	-16.2%
Public Health*	12,227	-18.6%	12,231	-18.6%
Medical School (Including Dental)*	53,465	-3.4%	58,700	-6.1%
HRES/UOS/Others <sup>(2)</sup>	52,991	-25.6%	59,908	-18.1%
<b>TOTAL - North America Campus only</b>	<b>222,843</b>	<b>-20.3%</b>	<b>253,556</b>	<b>-10.4%</b>

The 2010 Harvard University Greenhouse Gas Inventory represents the full breadth of the University's GHG footprint in North America. The inventory covers more than 26 million square feet of space and reports on all of the critical Kyoto protocol gases from both direct (Scope 1) and indirect (Scope 2) sources.

Harvard's emissions are reported annually in two ways, 1) FY06 vs. FY10 for just our Baseline Buildings (e.g., Buildings that have remained constant since FY 2006) and 2) FY06 vs. FY10 for the Total Campus (including any growth in square footage or usage).

*The data in the table indicate a 10.4% decline in Harvard's overall GHG Emissions since Fiscal Year 2006, including growth, from a Fiscal Year 2006 baseline, with a 20.3% decline in emissions if growth is excluded.*

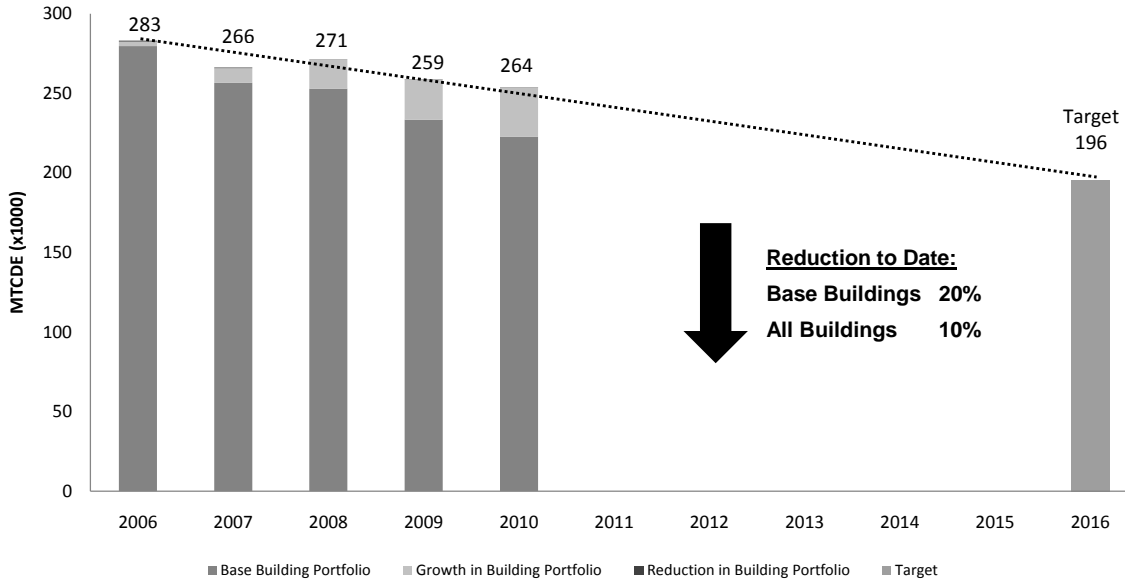
Adjustments to these emissions associated with Harvard's use of biofuels, biomass, Carbon uptake associated with the 3,500 acre Harvard Forest and Renewable Energy Certificates have not been made.

Additional GHG Inventory Reporting information can be found at [www.green.harvard.edu/reporting](http://www.green.harvard.edu/reporting).

\* Schools include buildings that are not on the central utility plant and therefore do not see the benefits of emissions reductions associated with central utilities.

### Harvard University Greenhouse Gas Emissions: FY2006 - FY2010 <sup>(3)</sup>

Expressed in thousands of MTCDE



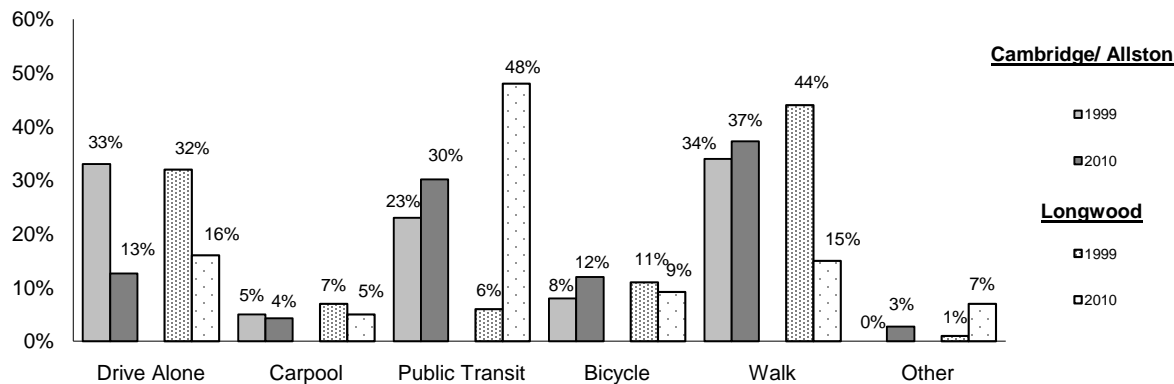
(1) MTCDE: Metric Tons of Carbon Dioxide Equivalent.

(2) HRES refers to Harvard Real Estate Services and UOS refers to University Operations Services.

(3) Emission for FY2006 through FY2009 have been restated based on the new methodology being followed. All North America Campuses are included.

SOURCE: HARVARD OFFICE FOR SUSTAINABILITY AND ENVIRONMENTAL HEALTH AND SAFETY

### Commute Trends: FY1999 - FY2010



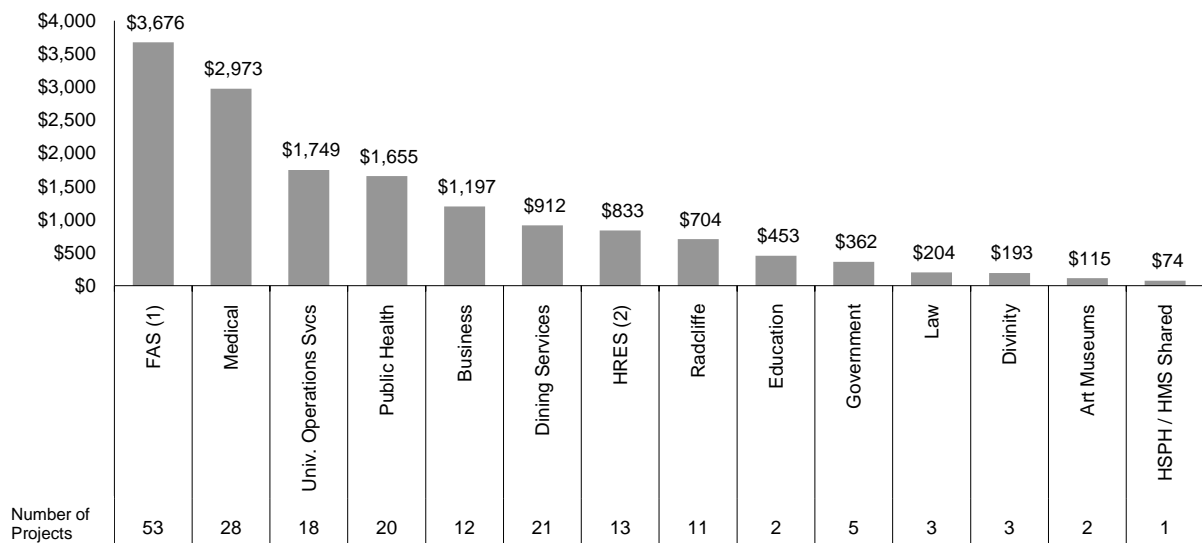
Cambridge Commute Type data is from UOS, Transportation Services Department.  
 Longwood Commute Data is from the Harvard Medical School Parking Office.

### Green Campus Loan Fund: FY2003 - FY2010

The Green Loan Fund is a revolving \$12 million fund that provides capital for high performance campus design, operations, maintenance and occupant behavior projects. Project eligibility guidelines state that projects must reduce the University's environmental impacts and meet specific payback requirements. Additional information can be found at [green.harvard.edu/loan-fund](http://green.harvard.edu/loan-fund).

### Total Amount Loaned per Faculty: FY2002 - FY2010\*

Expressed in thousands of dollars



\* Total amount loaned FY2002 - FY2010 is \$15,098,485. This number includes all open, pending and closed loans.

(1) FAS refers to Faculty of Arts and Sciences.

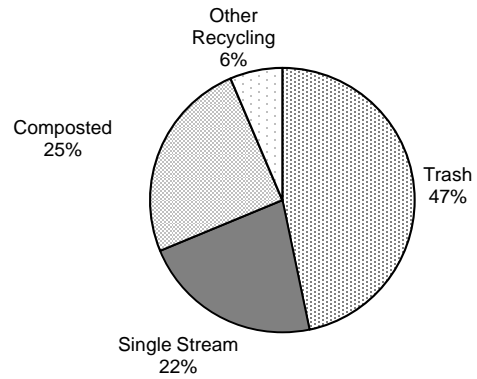
(2) HRES refers to Harvard Real Estate Services.

SOURCE: HARVARD OFFICE FOR SUSTAINABILITY

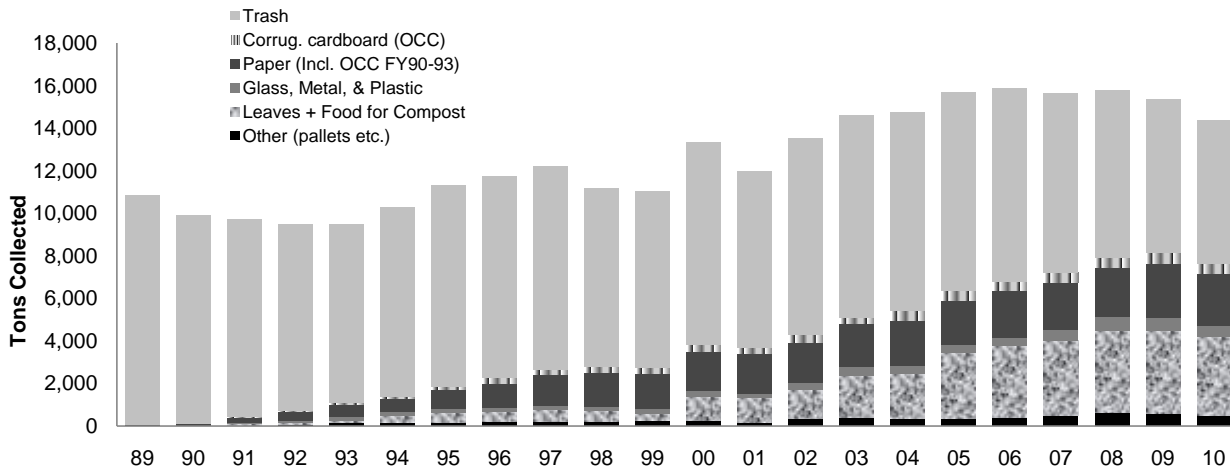
**Waste and Recycling: FY2010**

	Recycling Rate	Trash (in tons)
Faculty of Arts and Sciences	52%	2,396
SEAS <sup>(1)</sup>	67%	40
Business	62%	255
Design	69%	54
Divinity	70%	12
Education	63%	34
Government	34%	179
Law	52%	208
Radcliffe	57%	70
Medical	52%	947
Public Health & Dental	58%	253
HRES <sup>(2)</sup>	59%	272
Libraries	64%	72
Museums	80%	13
Other: UOS, UIS, HU Press	55%	590
<b>Average Recycling Rate</b>	<b>54%</b>	

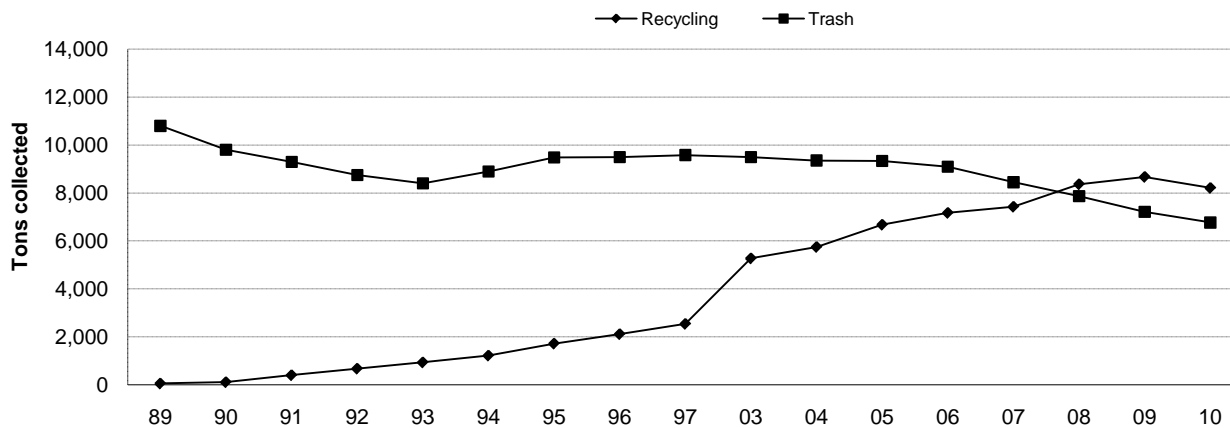
**Harvard University Refuse: FY2010**



**Harvard University Refuse: FY1989 - FY2010**



**Harvard University Trash and Recycling: FY1989 - FY2010**



(1) SEAS refers to Engineering and Applied Sciences.

(2) Harvard Real Estate Services recycling/trash data collected for University and Commercial Real Estate only. Does not include Residential Real Estate properties.

SOURCE: HARVARD OFFICE FOR SUSTAINABILITY AND UNIVERSITY OPERATIONS SERVICES

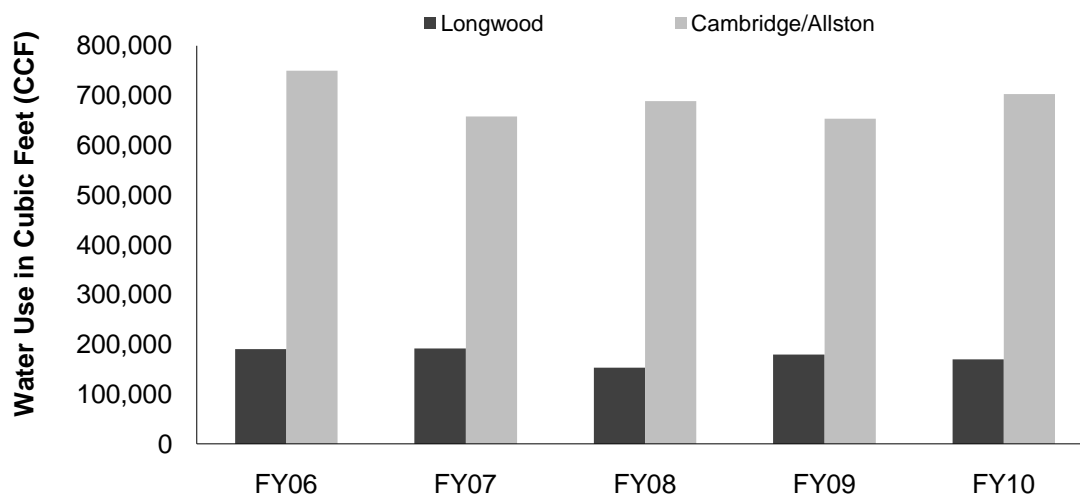
Solid Waste and Recycling data for Cambridge and Allston was reported by UOS, Solid Waste and Recycling Department.

Solid Waste and Recycling data for the Longwood campus was reported by the HMS and HSPH Operations Departments.

### Water Use in Cubic Feet (CCF): FY2010

	Water Use (CCF)	Per 1,000 Sq Ft	% Change Total Water Use (CCF) FY09-10
<b>Arts and Sciences</b>	237,362	25	1%
<b>Engineering and Applied Sciences</b>	4,034	12	-10%
<b>Business</b>	73,986	48	9%
<b>Design</b>	1,594	9	6%
<b>Divinity</b>	2,623	14	-15%
<b>Education</b>	3,093	12	-12%
<b>Government</b>	9,442	36	7%
<b>Law</b>	18,707	16	-11%
<b>Radcliffe</b>	2,845	16	-2%
<b>Medical (including Dental)</b>	144,402	54	-10%
<b>Public Health</b>	25,612	32	33%
<b>Harvard Real Estate Services</b>	209,000	n/a	-2%
<b>Other</b>	139,821	n/a	54%
<b>TOTAL</b>	<b>872,521</b>	<b>n/a</b>	<b>5%</b>

### Water Use: FY2006 - FY2010



Cambridge & Allston data is from the University Operations Services Utility Reports.

Harvard Medical School and Dental School data is reported by HMS Facilities Operations.

Harvard School of Public Health data is reported by HSPH Facilities Operations.

SOURCE: HARVARD OFFICE FOR SUSTAINABILITY AND UNIVERSITY OPERATIONS SERVICES

**Leadership in Energy and Environmental Design (LEED) Projects as of FY2010**

LEED is a rating system for green buildings and provides a nationally accepted third-party verification that a

building project meets the highest performance standards.

**LEED Certified:** The project has been third-party certified to meet the US Green Building Council LEED Standards.

**LEED Registered:** The project has registered for LEED Certification, but is not yet verified.

As of June 30, 2010, Harvard had 28 projects certified (10 since end of FY09) and 50 registered projects.

As of March 08, 2011, there have been 17 new LEED certifications and 9 new registrations in FY11.

**Registered LEED Projects by School/Department**

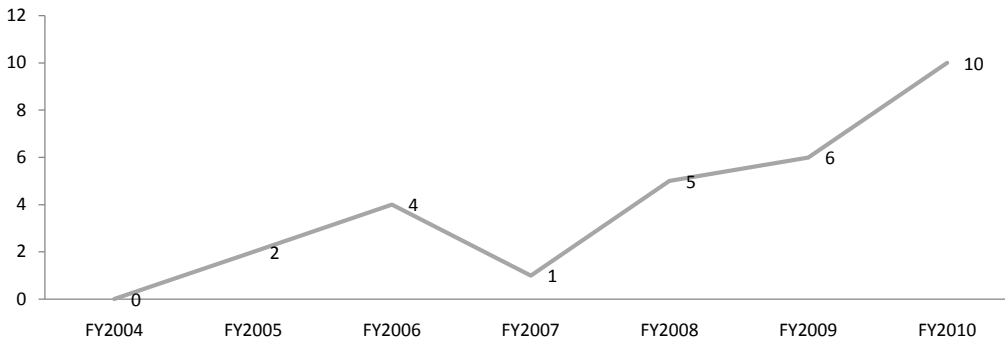
Project Type	Gross Sq Footage
<b>Arts and Sciences</b>	
Child Care	7,000
Dormitory	57,869
Laboratory	181,557
Labs/Office	1,700
Locker Room/Office	5,150
Museum	1,497
Office	22,610
<b>Engineering and Applied Sciences</b>	
Laboratory	31,280
Office	2,003
<b>Allston</b>	
Labs/Office	1,100,000
<b>Arnold Arboretum</b>	
Labs/Office	43,500
<b>Art Museum</b>	
Museum	132,310
Storage	66,101
<b>Business</b>	
Classroom	4,947
Gymnasium	118,600
<b>Education</b>	
Classroom	17,080
<b>Government</b>	
Classroom	2,928
Library	9,762
Office	6,019
<b>Harvard Management Company</b>	
Office	66,101
<b>Law</b>	
Classroom/Office	518,783
Dormitory	56,542
<b>Library</b>	
Library	126,899
<b>Medical</b>	
Laboratory	40,427
Office	43,900
<b>Public Health</b>	
Office	2,387
<b>Radcliffe</b>	
Office	42,732
<b>Total</b>	<b>2,709,684</b>

**Certified LEED Projects**

*Italics = New in FY10*

Project Name	Building Type	Level	Gross Sq Footage
<b>Arts and Sciences</b>			
<i>Littauer Fine Arts Library</i>	Library	Gold	23,300
<i>Holyoke Center 4th Floor</i>	Office	Gold	7,731
<i>Jacobsen Lab</i>	Lab	Gold	5,910
<i>Zhuang Lab</i>	Lab	Gold	3,435
<i>Schreiber Lab</i>	Lab	Gold	1,700
<b>Business</b>			
Aldrich Hall	Classroom	Silver	102,825
Gallatin Hall	Housing	Gold	48,218
Hamilton Hall	Housing	Gold	48,194
<i>McCulloch Hall</i>	Housing	Platinum	35,127
McCullum Hall	Classroom	Gold	8,165
<i>Class of 1959 Memorial Chapel</i>	Mixed Use	Gold	6,932
Wyss Hall	Office	Gold	6,155
<b>Education</b>			
Mather Dunster	Kitchen/Servery	Silver	15,870
<b>Divinity</b>			
<i>Rockefeller Hall</i>	Mixed Use	Gold	26,715
<b>Harvard Credit Union</b>			
<i>Credit Union - 104 Mt. Auburn</i>	Office	Silver	6,826
<b>Harvard Real Estate Services/University Information Systems</b>			
60 Oxford Street	IT	Certified	93,923
<b>Harvard Real Estate Services</b>			
One Western Avenue	Housing	Silver	229,000
5 Cowperthwaite Street	Housing	Gold	208,343
10 Akron Street	Housing	Gold	106,569
Zero Arrow Street	Theater/Office	Certified	40,012
90 Mount Auburn Street	Library	Gold	30,405
2 Grant Street	Housing	Platinum	1,000
<b>Law</b>			
125 Mt. Auburn, 2nd Fl.	Office	Silver	10,276
Griswold	Office	Platinum	2,078
<b>Medical</b>			
<i>Depace Lab</i>	Lab	Gold	1,800
<b>Public Health</b>			
Landmark Center	Mixed Use	Certified	42,000
<b>Radcliffe</b>			
Schlesinger Library	Library	Certified	25,988
<b>University Operations Services</b>			
Blackstone South	Office	Platinum	40,000
<b>Total</b>			<b>1,178,497</b>
<b>Total Registered and Certified LEED</b>			<b>3,888,181</b>

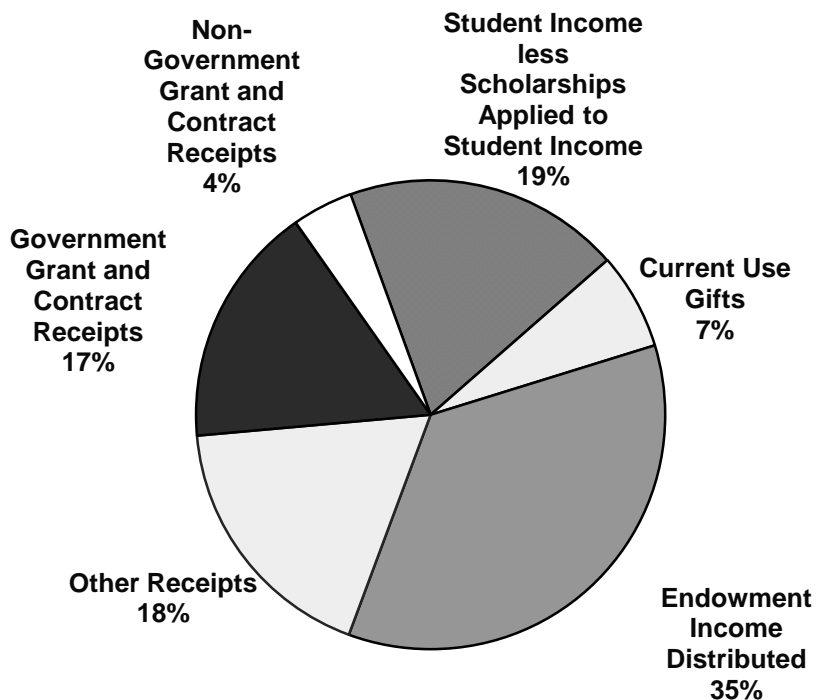
**Harvard LEED Certified Projects: FY2004 - FY2010**



SOURCE: HARVARD OFFICE FOR SUSTAINABILITY

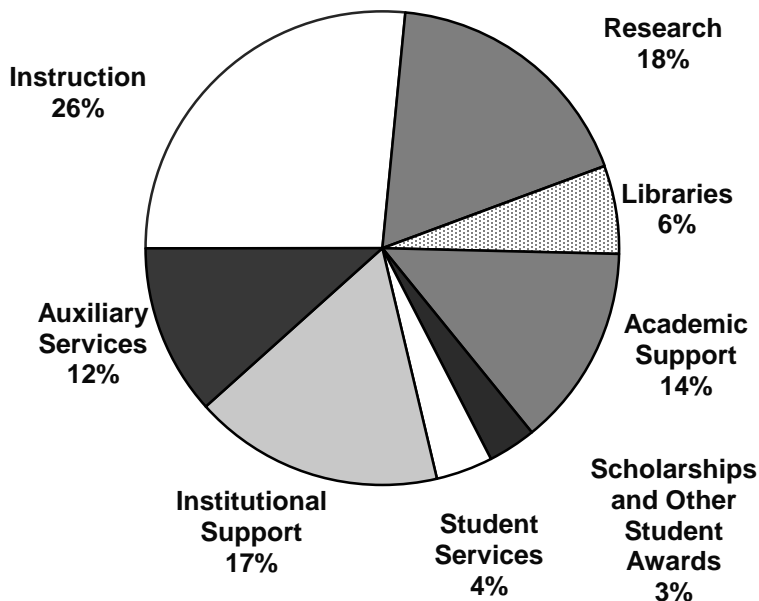
**Total University Income and Expenses for Fiscal Year Ended June 30, 2010**  
Expressed in thousands of dollars

**Total Income: \$3,724,833**



**Total Expenses: \$3,729,582**

(scholarship item excludes \$318.9 million in scholarships applied to student income)



SOURCE: HARVARD UNIVERSITY FINANCIAL REPORT



## Departmental Operating Expenses Year Ended June 30, 2010

Expressed in thousands of dollars

	Salaries and Wages	Employee Benefits	Scholarships/ Student Awards
<b>Faculty of Arts and Sciences</b>			
Faculty of Arts and Sciences	\$346,728	\$103,190	\$230,787
Division of Continuing Education	25,779	6,492	9,765
FAS Museums	11,279	4,613	1,843
<b>Total Faculty of Arts and Sciences</b>	<b>\$383,786</b>	<b>\$114,295</b>	<b>\$242,395</b>
<b>Engineering and Applied Sciences</b>	\$37,556	\$9,785	\$8,390
<b>Business</b>	156,602	45,968	34,308
<b>Dental</b>	12,847	4,440	1,817
<b>Design</b>	15,596	4,585	9,716
<b>Divinity</b>	14,138	4,469	9,257
<b>Education</b>	35,708	11,458	11,742
<b>Government</b>	61,020	20,281	21,399
<b>Law</b>	66,688	20,443	22,200
<b>Medical</b>	174,645	58,846	53,137
<b>Radcliffe</b>	6,910	2,641	2,617
<b>Public Health</b>	95,957	31,679	17,869
<b>Other Faculties Subtotal</b>	<b>\$677,667</b>	<b>\$214,595</b>	<b>\$192,452</b>
<b>Total Faculties</b>	<b>\$1,061,453</b>	<b>\$328,890</b>	<b>\$434,847</b>
<b>Arnold Arboretum</b>	4,495	1,793	144
<b>Harvard University Art Museums</b>	10,544	4,183	22
<b>Joint Center for Housing Studies</b>	927	359	73
<b>Nieman Foundation</b>	1,398	581	1,545
<b>Villa I Tatti</b>	3,358	1,129	1,291
<b>Other Academic Departments Subtotal</b>	<b>\$20,722</b>	<b>\$8,045</b>	<b>\$3,075</b>
<b>Service Departments</b>	<b>\$117,338</b>	<b>\$45,694</b>	<b>\$833</b>
<b>Memorial Church</b>	<b>\$1,141</b>	<b>\$409</b>	<b>-</b>
<b>Central Administration <sup>(2)</sup></b>	<b>\$162,694</b>	<b>\$43,086</b>	<b>\$2,177</b>
<b>TOTAL UNIVERSITY EXPENSES</b>	<b>\$1,363,348</b>	<b>\$426,124</b>	<b>\$440,932</b>

(1) Includes expense credits and transfers.

(2) Includes Harvard University Library and other University funds.

SOURCE: OFFICE OF THE CONTROLLER

Less: Financial Aid Applied against Income	Equipment and Supplies	Space and Occupancy	Depreciation	Other Expenses <sup>(1)</sup>	Total Expenses
(\$181,135)	\$51,752	\$165,483	\$106,353	\$121,859	\$945,017
(9,507)	1,420	3,301	924	17,217	55,391
(355)	2,478	3,362	1,244	6,359	30,823
<b>(\$190,997)</b>	<b>\$55,650</b>	<b>\$172,146</b>	<b>\$108,521</b>	<b>\$145,435</b>	<b>\$1,031,231</b>
(\$6,042)	\$5,691	\$8,197	\$8,611	\$11,625	83,813
(27,523)	8,727	31,588	27,437	129,298	406,405
(1,470)	3,062	3,811	1,918	6,861	33,286
(8,460)	1,444	3,095	756	7,738	34,470
(7,614)	723	2,593	1,636	3,985	29,187
(9,398)	2,264	6,582	795	20,628	79,779
(15,361)	5,730	12,978	3,004	26,081	135,132
(16,650)	5,385	16,581	5,874	26,973	147,494
(25,769)	42,325	78,462	46,520	157,476	585,642
(15)	367	1,743	2,047	2,936	19,246
(9,520)	21,038	27,843	6,910	136,320	328,096
<b>(\$127,822)</b>	<b>\$96,756</b>	<b>\$193,473</b>	<b>\$105,508</b>	<b>\$529,921</b>	<b>\$1,882,550</b>
<b>(\$318,819)</b>	<b>\$152,406</b>	<b>\$365,619</b>	<b>\$214,029</b>	<b>\$675,356</b>	<b>\$2,913,781</b>
(12)	496	1,263	331	2,380	10,890
-	3,202	4,912	1,930	4,844	29,637
-	22	163	-	382	1,926
-	84	291	39	1,079	5,017
-	908	912	369	2,069	10,036
<b>(\$12)</b>	<b>\$4,712</b>	<b>\$7,541</b>	<b>\$2,669</b>	<b>\$10,754</b>	<b>\$57,506</b>
-	\$48,861	(\$40,176)	\$14,653	\$17,530	\$204,733
-	\$62	\$719	\$71	\$393	\$2,795
<b>(\$80)</b>	<b>\$11,708</b>	<b>\$121,240</b>	<b>\$46,938</b>	<b>\$163,004</b>	<b>\$550,767</b>
<b>(\$318,911)</b>	<b>\$217,749</b>	<b>\$454,943</b>	<b>\$278,360</b>	<b>\$867,037</b>	<b>\$3,729,582</b>

**Market Value of Endowment Funds as of June 30, 2010**

Expressed in millions of dollars, in descending order

	Endowment Market Value	Market Value % of Total
<b>Arts and Sciences <sup>(1)</sup></b>	\$11,645	42.3%
<b>Medical</b>	3,320	12.0%
<b>Business</b>	2,308	8.4%
<b>Other Departments</b>	2,330	8.5%
<b>President's Funds</b>	1,830	6.6%
<b>Law</b>	1,426	5.2%
<b>Public Health</b>	967	3.5%
<b>Government <sup>(2)</sup></b>	858	3.1%
<b>Engineering and Applied Sciences</b>	768	2.8%
<b>Divinity</b>	481	1.7%
<b>Radcliffe Institute for Advanced Study</b>	465	1.7%
<b>Education</b>	417	1.5%
<b>Design</b>	326	1.2%
<b>Central Administration</b>	251	0.9%
<b>Dental</b>	165	0.6%
<b>Total Endowment</b>	<b>\$27,557</b>	<b>100%</b>

(1) Arts and Sciences includes: Continuing Education, College Library, FAS Museums, GSAS, Athletics, College Life and Student Services, and Dumbarton Oaks.

(2) Government includes Institute of Politics.

SOURCE: HARVARD ANNUAL FINANCIAL REPORT

## Endowment Performance: FY 1980 - FY 2010

Fiscal Year	Market Value at End of Year (in 000's)	Return <sup>(1)</sup>	Spending Rate <sup>(2)</sup>	Endowment Income as % of University Operating Revenue
1980	1,491,059	15.9%	5.4%	19.4%
1981	1,622,734	11.2%	5.2%	18.4%
1982	1,617,290	0.0%	5.1%	19.1%
1983	2,307,437	43.6%	5.8%	19.4%
1984	2,187,884	-3.8%	4.3%	19.0%
1985	2,694,802	26.8%	4.9%	18.1%
1986	3,435,006	31.3%	4.3%	17.5%
1987	4,018,269	19.9%	3.6%	17.1%
1988	4,155,778	5.7%	3.3%	17.2%
1989	4,478,976	12.8%	3.9%	18.9%
1990	4,760,284	7.5%	3.8%	17.9%
1991	4,708,407	1.1%	4.2%	18.1%
1992	5,118,118	11.8%	4.5%	18.4%
1993	5,778,257	16.8%	4.8%	19.9%
1994	6,201,220	9.8%	4.5%	20.6%
1995	7,045,863	16.8%	4.6%	20.9%
1996	9,117,945	26.0%	4.3%	20.5%
1997	11,161,761	25.8%	4.1%	21.2%
1998	13,278,938	20.5%	3.7%	23.5%
1999	14,535,675	12.2%	3.3%	23.5%
2000	19,148,288	32.2%	4.0%	27.5%
2001	18,259,199	-2.7%	3.3%	27.6%
2002	17,518,021	-0.5%	4.8%	31.9%
2003	19,294,735	12.5%	5.2%	31.2%
2004	22,587,305	21.1%	4.9%	31.1%
2005	25,853,048	19.2%	4.5%	30.5%
2006	29,219,430	16.7%	4.2%	31.1%
2007	34,912,100	23.0%	4.6%	32.5%
2008	36,926,693	8.6%	4.8%	34.5%
2009 <sup>(3)</sup>	26,138,239	-27.3%	4.5%	37.2%
2010	\$27,557,404	11.0%	6.1%	35.5%

## Compound Annual Growth Rates and Average Rates of Return

30 YEAR	10.2%	13.7%
20 YEAR	9.2%	12.7%
10 YEAR	3.7%	8.2%
5 YEAR	1.3%	6.4%
1 YEAR	5.4%	-

(1) This is the total return percentage reported by the Harvard Management Company.

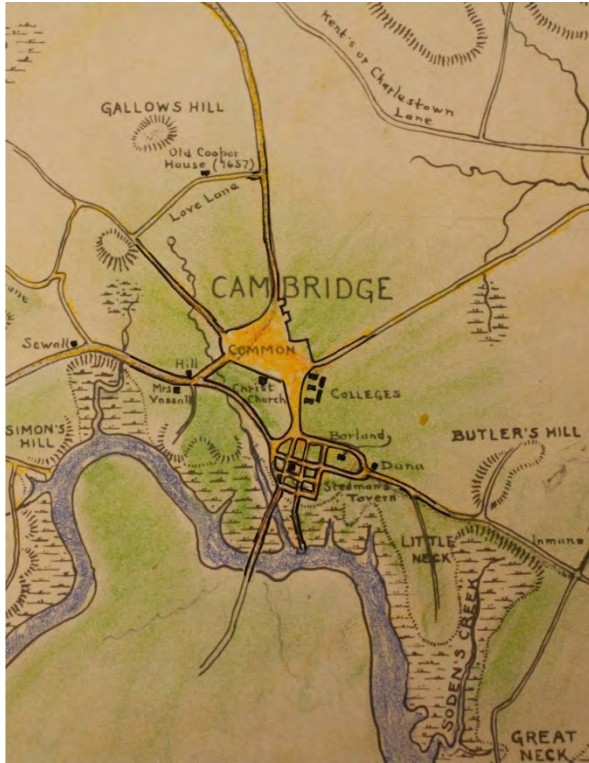
It is calculated based on reinvestment of all earnings on a monthly basis.

(2) Prior to FY04: Spending rate based upon the per unit distribution rate established by the Corporation for each fiscal year.

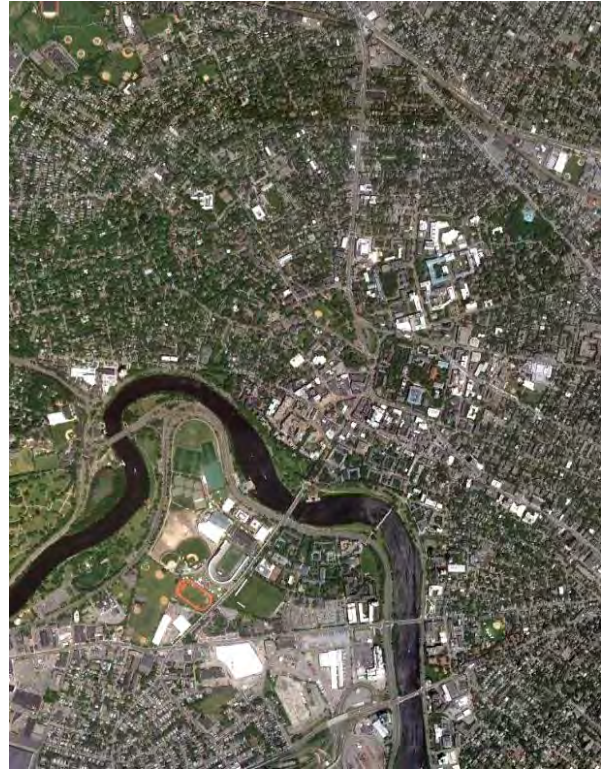
Starting with FY04: Spending rate based upon actual endowment distributions in combination with approved decapitalizations of endowment principal made during the fiscal year.

(3) Values have been recast to conform with the Fiscal Year 2010 Annual Financial Report

SOURCE: ANNUAL FINANCIAL REPORT AND INTERNAL REPORTS



Stephanie Mitchell/Harvard Staff Photographer



© Google 2010

### About the Cover:

The cover is a detail from an image of a historic map of Cambridge, the Charles River, and the Harvard campus. The map is from Harvard University Archives. On the right is a Google Earth image of approximately the same location, as of 2010.

### About Harvard:

Harvard University is the oldest institution of higher learning in the United States. It was established in 1636 by vote of the Great and General Court of the Massachusetts Bay Colony and was named for its first benefactor, John Harvard of Charlestown, Massachusetts. Upon his death in 1638, the young minister left his library and half his estate to the new College. Founded 16 years after the arrival of the Pilgrims at Plymouth, the College has grown from nine students with a single master to an enrollment of more than 20,000 degree candidates.