

HARVARD UNIVERSITY  
FACT BOOK  
2011-12





<b>ORGANIZATION</b>	<b>Pages</b>
Central Administration	2
Faculties and Allied Institutions	3

<b>PEOPLE</b>	<b>Pages</b>
Degree Student Enrollment	4 -6
International Enrollment	7
Summer School and Non-Degree Students	8
Degrees Conferred	9-11
Faculty and Staff	12

<b>RESOURCES</b>	<b>Pages</b>
Tuition, Fees, and Financial Aid	13 – 15
Sponsored Programs	16 – 20
Library	21 – 22
Physical Plant	23 – 24
Environmental Performance	25 – 29
Income and Expenses	30 – 32
Endowment	33

The Harvard University Fact Book is published annually by:  
The Office of Institutional Research  
Holyoke Center, Suite 780  
Cambridge, MA 02138

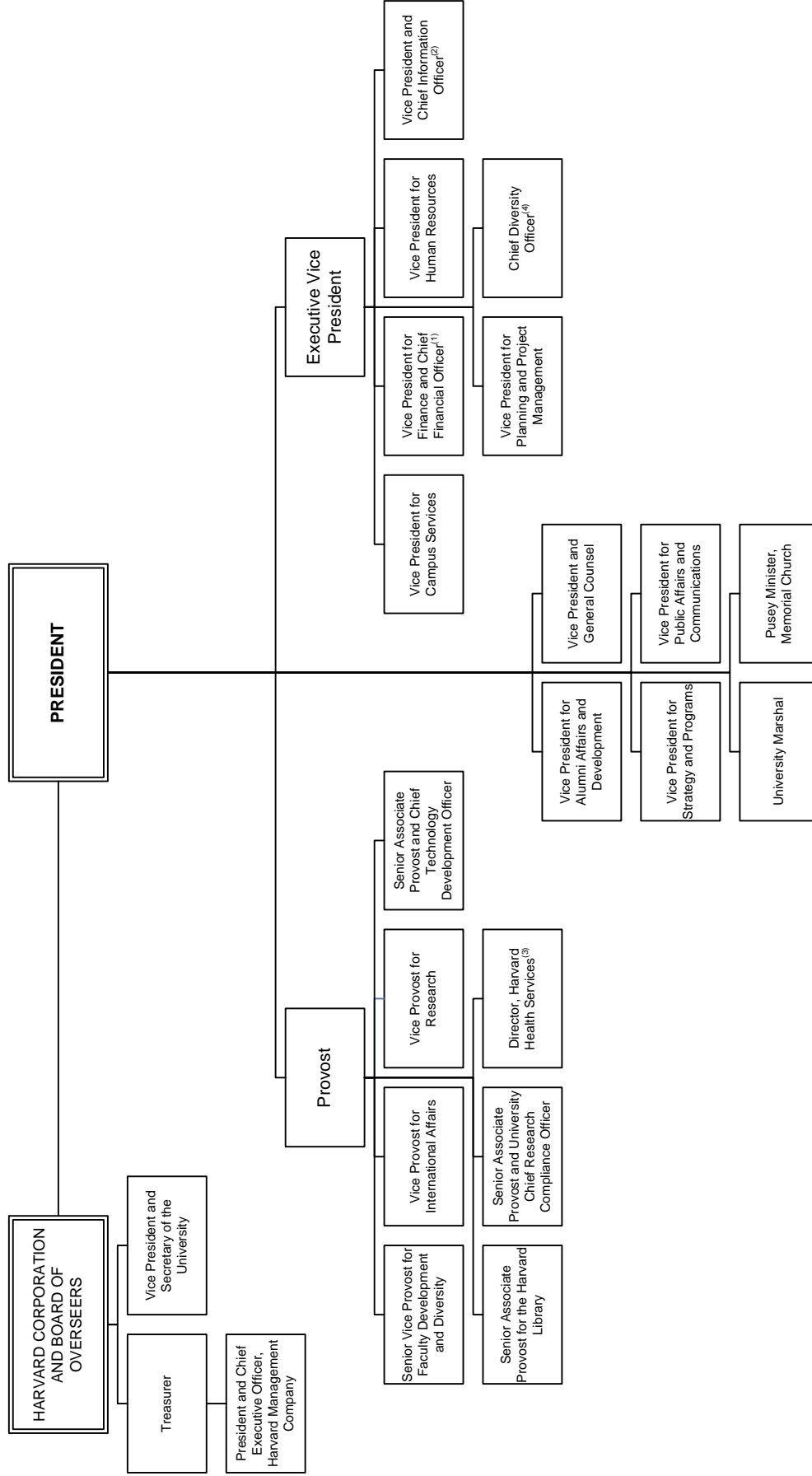
The address for the electronic version is:  
[http://www.provost.harvard.edu/institutional\\_research/factbook.php](http://www.provost.harvard.edu/institutional_research/factbook.php)

If you would like more information about data contained in the Fact Book, contact:

John Scanlon, Assistant Director  
(617) 495-0591, E-mail: [john\\_scanlon@harvard.edu](mailto:john_scanlon@harvard.edu)

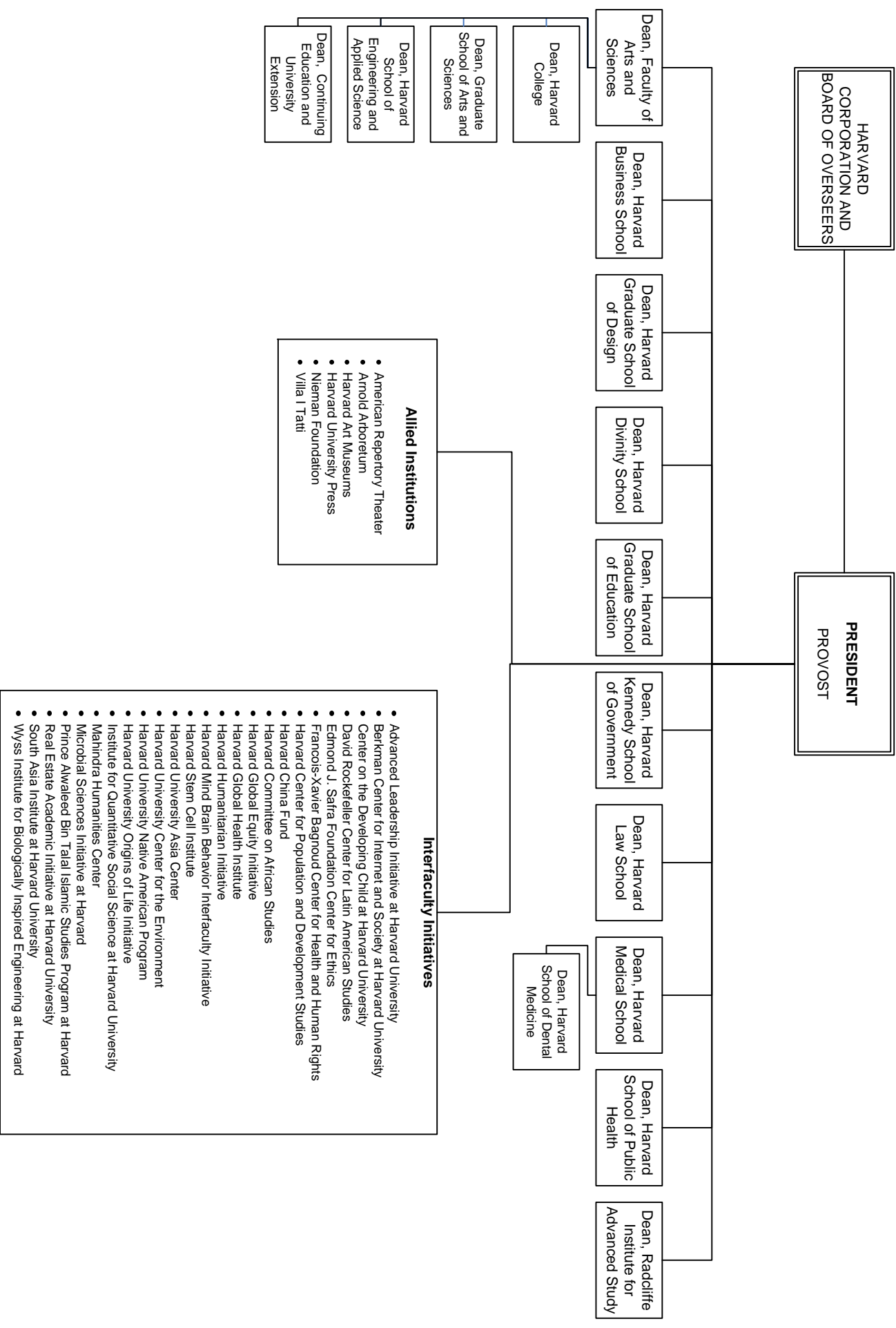
*Copyright 2012 by the President and Fellows of Harvard College*

# Central Administration



(1) The Vice President for Finance and Chief Financial Officer also reports to the President.  
 (2) The Vice President and CIO also reports to the Provost and to the Dean of the Faculty of Arts and Sciences.  
 (3) The Director of Harvard Health Services also reports to the Executive Vice President  
 (4) The Chief Diversity Officer also Reports to the President

# Faculties and Allied Institutions



## Fall Degree and Certificate Headcount Enrollment, 2007-2011

	<b>2007</b>	<b>2008</b>	<b>2009</b>	<b>2010</b>	<b>2011</b>
<b>College</b> <sup>(1,3)</sup>	6,648	6,678	6,655	6,641	6,657
<b>Freshmen</b>	1,680	1,669	1,677	1,670	1,676
<b>Sophomores</b>	1,695	1,706	1,677	1,708	1,691
<b>Juniors</b>	1,660	1,672	1,670	1,631	1,659
<b>Seniors</b>	1,613	1,631	1,631	1,632	1,631
<b>GSAS</b> <sup>(2,3)</sup>	3,682	3,720	3,738	3,942	3,874
<b>Business</b>	1,854	1,852	1,911	1,912	1,855
<b>Dental</b>	247	210	244	249	253
<b>Design</b>	602	610	662	691	739
<b>Divinity</b>	453	433	384	362	339
<b>Education</b>	905	902	992	997	984
<b>Government</b>	930	940	967	920	931
<b>Law</b>	1,966	1,952	1,987	1,984	1,987
<b>Medical</b>	809	782	756	788	787
<b>Public Health</b>	797	832	827	814	865
<b>Extension</b>	1,133	1,407	1,987	1,929	1,798
<b>Undergraduate</b>	433	478	526	614	588
<b>Graduate</b>	700	929	1,461	1,315	1,210
<b>A.R.T.</b> <sup>(4)</sup>	45	46	45	47	44
<b>TOTAL, duplicated</b>	<b>20,071</b>	<b>20,364</b>	<b>21,155</b>	<b>21,276</b>	<b>21,113</b>
<b>TOTAL, unduplicated</b>	<b>19,994</b>	<b>20,268</b>	<b>21,051</b>	<b>21,206</b>	<b>21,049</b>

<b>Enrollment Level</b>	<b>2007</b>	<b>2008</b>	<b>2009</b>	<b>2010</b>	<b>2011</b>
<b>Undergraduates</b>					
<b>Full-Time</b>	6,837	6,890	6,869	6,909	6,906
<b>Part-Time</b>	244	266	312	346	339
<b>Subtotal</b>	<b>7,081</b>	<b>7,156</b>	<b>7,181</b>	<b>7,255</b>	<b>7,245</b>
<b>Graduate and Professional Students</b>					
<b>Full-Time</b>	11,992	11,947	12,301	12,512	12,367
<b>Part-Time</b>	921	1,165	1,569	1,509	1,437
<b>Subtotal</b>	<b>12,913</b>	<b>13,112</b>	<b>13,870</b>	<b>14,021</b>	<b>13,804</b>
<b>TOTAL, unduplicated</b>	<b>19,994</b>	<b>20,268</b>	<b>21,051</b>	<b>21,276</b>	<b>21,049</b>

(1) College totals exclude students who were studying abroad.

(2) Graduate School of Arts and Sciences.

(3) Counts for College and GSAS include Engineering students.

(4) American Repertory Theater.

-Degree and certificate students only.

-Counts as of October 15.

-Students are counted once in every program in which they are enrolled; this results in a "duplicated" total. The "unduplicated" total counts students once across the university.

SOURCE: SCHOOL REGISTRARS

## Fall Enrollment by Degree or Certificate, 2007-2011

		2007	2008	2009	2010	2011
<b>College</b> <sup>(1,3)</sup>	<b>A.B., S.B.</b>	6,648	6,678	6,655	6,641	6,657
	<b>GSAS</b> <sup>(2,3)</sup>					
	<b>A.M., S.M., M.E.</b>	172	167	148	150	152
	<b>Ph.D.</b>	3,510	3,553	3,590	3,792	3,722
<b>Business</b>	<b>M.B.A.</b>	1,813	1,805	1,861	1,860	1,803
	<b>D.B.A.</b>	41	47	50	52	52
<b>Dental</b>	<b>D.M.D.</b>	147	141	147	149	150
	<b>M.M.Sc.</b>	41	41	38	32	28
	<b>D.M.Sc.</b>	20	20	25	29	35
	<b>Cert.</b>	39	8	34	39	40
<b>Design</b>	<b>M.Arch.</b>	330	322	338	324	327
	<b>M.A.U.D., M.L.A.U.D.</b>	40	50	59	58	68
	<b>M.Des.</b>	59	59	67	91	106
	<b>M.L.A.</b>	87	97	107	130	141
	<b>M.U.P.</b>	54	54	59	58	67
	<b>D.Des.</b>	32	28	32	30	30
<b>Divinity</b>	<b>M.Div.</b>	158	171	157	146	124
	<b>M.T.S.</b>	239	214	179	172	169
	<b>Th.M.</b>	6	8	7	3	3
	<b>Th.D.</b>	50	40	41	41	43
<b>Education</b>	<b>Ed.M.</b>	567	558	669	674	656
	<b>Ed.L.D.</b>	-	-	-	25	50
	<b>Ed.D.</b>	323	329	318	294	267
	<b>C.A.S.</b>	15	15	5	4	11
<b>Government</b>	<b>M.P.A.</b> <sup>(3)</sup>	338	339	377	342	350
	<b>M.P.A.I.D.</b>	144	128	146	128	135
	<b>M.P.P.</b>	423	450	415	424	430
	<b>M.U.P.</b>	11	10	13	6	-
	<b>Ph.D.</b>	14	13	16	20	16
<b>Law</b>	<b>J.D.</b>	1,726	1,723	1,762	1,726	1,729
	<b>LL.M.</b>	172	158	167	191	186
	<b>S.J.D.</b>	68	71	58	67	72
<b>Medical</b>	<b>M.D.</b>	758	728	705	724	709
	<b>M.M.Sc.</b>	51	54	51	64	78
<b>Public Health</b>	<b>M.P.H.</b>	289	286	276	258	291
	<b>S.M.</b>	234	254	264	264	299
	<b>D.P.H.</b>	14	10	13	9	9
	<b>D.S.</b>	260	282	274	283	266
<b>Extension</b>	<b>A.A., A.L.B.</b>	433	478	526	614	588
	<b>A.L.M., Grad. Cert.</b>	700	929	1,461	1,315	1,210
<b>A.R.T.</b> <sup>(4)</sup>	<b>Graduate Certificate</b>	45	46	45	47	44
	<b>TOTAL, duplicated</b>	<b>20,071</b>	<b>20,364</b>	<b>21,155</b>	<b>21,276</b>	<b>21,113</b>

(1) College totals exclude students who were studying abroad.

(2) Graduate School of Arts and Sciences.

(3) Counts for College and GSAS include Engineering students.

(4) American Repertory Theater.

-Counts as of October 15.

-Students are counted once in every program in which they are enrolled; this results in a "duplicated" total.

SOURCE: SCHOOL REGISTRARS

## Fall Enrollment by Gender, 2011

	Men	Women	Total
College <sup>(1,3)</sup>	3,333	3,324	<b>6,657</b>
GSAS <sup>(2,3)</sup>	2,156	1,718	<b>3,874</b>
Business	1,149	706	<b>1,855</b>
Dental	117	136	<b>253</b>
Design	372	367	<b>739</b>
Divinity	157	182	<b>339</b>
Education	287	697	<b>984</b>
Government	534	397	<b>931</b>
Law	1,031	956	<b>1,987</b>
Medical	437	350	<b>787</b>
Public Health	319	546	<b>865</b>
Extension	975	823	<b>1,798</b>
A.R.T. <sup>(4)</sup>	21	23	<b>44</b>
<b>TOTAL, duplicated</b>	<b>10,888</b>	<b>10,225</b>	<b>21,113</b>
<b>TOTAL, unduplicated</b>	<b>10,853</b>	<b>10,196</b>	<b>21,049</b>

## Fall Enrollment by Ethnicity, 2011

	American Indian or Alaska Native	Asian	Black or African American	Hispanic or Latino	Native Hawaiian or Other Pacific Islander	Two or More Races	White	Unknown	Inter-national <sup>(2)</sup>	Total
College <sup>(1,3)</sup>	21	1,183	453	605	2	311	2,966	399	717	<b>6,657</b>
GSAS <sup>(2,3)</sup>	3	365	83	134	2	82	1,708	215	1,282	<b>3,874</b>
Business		244	88	77	-	34	690	115	607	<b>1,855</b>
Dental	2	82	4	6	-	7	96	3	53	<b>253</b>
Design	2	84	20	40	1	17	258	48	269	<b>739</b>
Divinity	2	15	23	28	-	19	204	11	37	<b>339</b>
Education	5	107	86	77	3	33	528	20	125	<b>984</b>
Government	3	93	35	59	2	9	280	73	377	<b>931</b>
Law	11	182	177	136	-	24	912	188	357	<b>1,987</b>
Medical	3	216	70	69	1	24	296	60	48	<b>787</b>
Public Health	3	93	35	38	-	22	323	56	295	<b>865</b>
Extension	4	177	71	89	2	56	1,061	119	219	<b>1,798</b>
A.R.T. <sup>(4)</sup>	-	-	-	-	-	-	2	40	2	<b>44</b>
<b>TOTAL, duplicated</b>	<b>59</b>	<b>2,841</b>	<b>1,145</b>	<b>1,358</b>	<b>13</b>	<b>638</b>	<b>9,324</b>	<b>1,347</b>	<b>4,388</b>	<b>21,113</b>
<b>TOTAL, unduplicated</b>	<b>58</b>	<b>2,831</b>	<b>1,136</b>	<b>1,351</b>	<b>13</b>	<b>636</b>	<b>9,299</b>	<b>1,343</b>	<b>4,382</b>	<b>21,049</b>

## Fall Enrollment by Level, Ethnicity, and Gender, 2011

	American Indian or Alaska Native	Asian	Black or African American	Hispanic or Latino	Native Hawaiian or Other Pacific Islander	Two or More Races	White	Unknown	Inter-national <sup>(2)</sup>	Total
<b>Undergraduate</b>	<b>22</b>	<b>1,217</b>	<b>474</b>	<b>647</b>	<b>3</b>	<b>341</b>	<b>3,338</b>	<b>447</b>	<b>756</b>	<b>7,245</b>
Men	13	518	201	341	-	151	1,778	237	412	<b>3,651</b>
Women	9	699	273	306	3	190	1,560	210	344	<b>3,594</b>
<b>Graduate and Professional</b>	<b>36</b>	<b>1,614</b>	<b>662</b>	<b>704</b>	<b>10</b>	<b>295</b>	<b>5,961</b>	<b>896</b>	<b>3,626</b>	<b>13,804</b>
Men	18	741	302	357	4	134	3,104	503	2,039	<b>7,202</b>
Women	18	873	360	347	6	161	2,857	393	1,587	<b>6,602</b>
<b>Total, unduplicated</b>	<b>58</b>	<b>2,831</b>	<b>1,136</b>	<b>1,351</b>	<b>13</b>	<b>636</b>	<b>9,299</b>	<b>1,343</b>	<b>4,382</b>	<b>21,049</b>
Men	31	1,259	503	698	4	285	4,882	740	2,451	<b>10,853</b>
Women	27	1,572	633	653	9	351	4,417	603	1,931	<b>10,196</b>

(1) College totals exclude students who were studying abroad.

(2) Graduate School of Arts and Sciences.

(3) Counts for College and GSAS include Engineering students.

(4) American Repertory Theater.

-Counts as of October 15.

-Students are counted once in every program in which they are enrolled; this results in a "duplicated" total. The "unduplicated" total counts students once across the university.

SOURCE: SCHOOL REGISTRARS



## Fall International Enrollment, by School and Region, 2011

	Africa	Asia	Caribbean, Central, and South America	Europe	Middle East	North America	Oceania	Unknown	Total
College <sup>(1,3)</sup>	72	190	28	186	46	166	29	-	717
GSAS <sup>(2,3)</sup>	16	596	49	332	86	179	24	-	1,282
Business	37	192	57	187	39	74	21	-	607
Dental	2	23	3	3	11	11	-	-	53
Design	5	152	22	46	9	27	8	-	269
Divinity	3	19	2	3	-	8	2	-	37
Education	7	61	18	14	5	16	4	-	125
Government	31	115	58	83	38	34	18	-	377
Law	31	118	37	81	20	60	10	-	357
Medical	11	13	2	6	1	15	-	-	48
Public Health	28	155	9	36	12	50	5	-	295
Extension	-	2	-	-	-	3	-	214	219
A.R.T. <sup>(4)</sup>	-	1	-	-	-	1	-	-	2
<b>TOTAL, duplicated</b>	<b>243</b>	<b>1,637</b>	<b>285</b>	<b>977</b>	<b>267</b>	<b>644</b>	<b>121</b>	<b>214</b>	<b>4,388</b>
<b>TOTAL, unduplicated</b>	<b>241</b>	<b>1,635</b>	<b>285</b>	<b>976</b>	<b>267</b>	<b>643</b>	<b>121</b>	<b>214</b>	<b>4,382</b>

## Fall International Enrollment: top 25 countries, 2007-2011

2007		2008		2009		2010		2011	
Country	Total	Country	Total	Country	Total	Country	Total	Country	Total
Canada	496	Canada	540	Canada	536	Canada	537	China	559
China	392	China	413	China	448	China	499	Canada	548
South Korea	294	South Korea	297	South Korea	303	South Korea	291	South Korea	287
India	213	India	220	India	229	India	222	India	229
United Kingdom	197	United Kingdom	190	United Kingdom	204	United Kingdom	209	United Kingdom	204
Germany	130	Germany	132	Germany	134	Germany	135	Germany	156
Japan	127	Japan	110	Singapore	106	Singapore	117	Singapore	119
Taiwan	114	Taiwan	99	Japan	103	Mexico	99	Japan	96
Mexico	96	Turkey	91	Taiwan	101	Turkey	94	Australia	95
Turkey	85	Mexico	90	Turkey	94	Japan	89	Mexico	94
Israel	74	Israel	84	Mexico	93	Australia	86	Taiwan	82
France	73	Singapore	84	Australia	83	Taiwan	82	Turkey	82
Australia	71	Australia	77	Israel	81	Israel	76	France	80
Singapore	64	France	75	France	73	France	72	Brazil	72
Brazil	60	Italy	63	Brazil	64	Italy	58	Israel	72
Italy	57	Brazil	62	Italy	63	Brazil	55	Pakistan	58
Bulgaria	51	Pakistan	55	Spain	59	Pakistan	50	Italy	53
Greece	51	Spain	55	Pakistan	48	Spain	49	Nigeria	50
Argentina	49	Bulgaria	44	Greece	43	Thailand	46	Thailand	46
Pakistan	46	Greece	43	Columbia	42	Columbia	42	Columbia	42
Spain	46	Columbia	42	Nigeria	41	Chile	41	Spain	42
Russia	43	Nigeria	40	Bulgaria	40	Nigeria	39	Romania	41
Columbia	39	Russia	39	Argentina	39	Romania	39	Chile	38
Romania	39	Thailand	39	Romania	37	Russia	38	Argentina	36
Thailand	36	Argentina	36	Chile	35	Lebanon	37	Greece	35

(1) College totals exclude students who were studying abroad.

(2) Graduate School of Arts and Sciences.

(3) Counts for College and GSAS include Engineering students.

(4) American Repertory Theater.

-Counts as of October 15.

-Students are counted once in every program in which they are enrolled; this results in a "duplicated" total. The "unduplicated" total counts students once across the university.

-International: Non-Resident Aliens

SOURCE: SCHOOL REGISTRARS; HARVARD INTERNATIONAL OFFICE

## Summer School Enrollment: Summer 2007 - 2011

### Harvard Students by School <sup>(1)</sup>

	<b>2007</b>	<b>2008</b>	<b>2009</b>	<b>2010</b>	<b>2011</b>
College	594	642	620	585	625
GSAS	77	61	57	50	41
Education	5	6	3	4	4
Extension	387	484	600	660	648
Other Harvard Schools	14	17	12	9	7
<b>Subtotal</b>	<b>1,077</b>	<b>1,210</b>	<b>1,292</b>	<b>1,308</b>	<b>1,325</b>

### Other Students by Educational Level <sup>(2)(3)</sup>

Secondary School	1,362	1,502	1,303	1,236	1,393
Graduate	2,002	2,303	2,033	2,055	2,176
Undergraduate	1,409	1,650	1,499	1,317	1,482
Unknown	70	72	73	45	39
<b>Subtotal</b>	<b>4,843</b>	<b>5,527</b>	<b>4,908</b>	<b>4,653</b>	<b>5,090</b>
<b>TOTAL</b>	<b>5,920</b>	<b>6,737</b>	<b>6,200</b>	<b>5,961</b>	<b>6,415</b>

### Non-Degree Head Count: Fall 2007 - 2011 <sup>(4)</sup>

	<b>2007</b>	<b>2008</b>	<b>2009</b>	<b>2010</b>	<b>2011</b>
College	-	-	-	-	-
GSAS	160	167	165	184	182
Dental	-	-	-	-	-
Design	3	3	3	3	3
Divinity	14	6	4	1	1
Education	107	104	63	59	61
Government	21	33	32	29	22
Law	48	35	18	46	44
Medical	-	-	-	-	-
Public Health	8	4	11	11	18
Extension <sup>(5)</sup>	5,300	5,859	6,240	6,032	6,037
<b>TOTAL</b>	<b>5,661</b>	<b>6,211</b>	<b>6,536</b>	<b>6,365</b>	<b>6,368</b>

(1) Counts include matriculating Harvard students enrolled in Harvard courses during the summer session.

(2) Beginning with 2004, high school graduates enrolled in secondary school programs are counted as undergraduates instead of Secondary School students.

(3) Previous versions of this page erroneously reversed counts for "Undergraduate" and "Secondary School" students in 2007 and 2008.

(4) Non-degree enrollments include all students enrolled on October 15 in at least one class that is creditable toward a degree or formal award.

(5) Counts are for the first semester only. This significantly undercounts yearly enrollment in the Extension School as approximately the same number of new students might be enrolled in the second semester.

SOURCE: SCHOOL REGISTRARS

## Degrees and Certificates Conferred: Academic Years 2007-2011

		2007	2008	2009	2010	2011
<b>College</b>	A.B.	1,671	1,631	1,647	1,660	1,625
	S.B.	25	13	17	14	21
	<b>Subtotal</b>	<b>1,696</b>	<b>1,644</b>	<b>1,664</b>	<b>1,674</b>	<b>1,646</b>
<b>GSAS<sup>(1)</sup></b>	A.M.	342	380	334	317	354
	M.E.	-	1	-	2	-
	M.F.S.	1	-	-	-	-
	S.M.	59	67	66	58	53
	Ph.D.	541	534	512	478	513
	<b>Subtotal</b>	<b>943</b>	<b>982</b>	<b>912</b>	<b>855</b>	<b>920</b>
<b>Business</b>	M.B.A.	901	907	889	909	941
	M.M.R.	-	-	-	-	1
	D.B.A.	5	5	7	7	9
	<b>Subtotal</b>	<b>906</b>	<b>912</b>	<b>896</b>	<b>916</b>	<b>951</b>
<b>Dental</b>	D.M.D.	30	40	30	34	38
	M.M.Sc.	13	14	9	13	13
	D.M.S.	8	5	5	7	5
	Cert.	20	40	21	15	17
	<b>Subtotal</b>	<b>71</b>	<b>99</b>	<b>65</b>	<b>69</b>	<b>73</b>
<b>Design</b>	M. Arch.	100	116	97	104	98
	M.A.U.D., M.L.A.U.D.	24	21	17	32	25
	M.Des.	11	33	33	25	44
	M.L.A.	37	25	32	37	43
	M.U.P.	24	29	21	27	31
	D.Des.	9	12	6	9	8
<b>Subtotal</b>	<b>205</b>	<b>236</b>	<b>206</b>	<b>234</b>	<b>249</b>	
<b>Divinity</b>	M.Div.	47	43	62	56	60
	M.T.S.	96	116	113	86	75
	Th.M.	4	3	7	8	3
	Th.D.	1	11	6	5	4
<b>Subtotal</b>	<b>148</b>	<b>173</b>	<b>188</b>	<b>155</b>	<b>142</b>	
<b>Education</b>	Ed.M.	591	552	538	625	649
	Ed.D.	53	40	41	54	47
	C.A.S.	19	15	18	6	4
	<b>Subtotal</b>	<b>663</b>	<b>607</b>	<b>597</b>	<b>685</b>	<b>700</b>
<b>Government</b>	M.P.A.	309	276	269	296	273
	M.P.A.I.D.	71	83	53	65	58
	M.P.P.	205	214	190	210	177
	M.U.P.	7	4	-	5	5
<b>Subtotal</b>	<b>592</b>	<b>577</b>	<b>512</b>	<b>576</b>	<b>513</b>	
<b>Law</b>	J.D.	574	588	567	589	585
	LL.M.	154	168	151	161	176
	S.J.D.	14	10	13	11	8
	<b>Subtotal</b>	<b>742</b>	<b>766</b>	<b>731</b>	<b>761</b>	<b>769</b>
<b>Medicine</b>	M.D.	189	174	175	153	174
	M.M.Sc.	23	22	26	27	22
	<b>Subtotal</b>	<b>212</b>	<b>196</b>	<b>201</b>	<b>180</b>	<b>196</b>
<b>Public Health</b>	M.P.H.	220	262	246	268	241
	S.M., M.O.H.	125	143	125	157	141
	D.P.H., D.S.	52	49	56	54	59
	<b>Subtotal</b>	<b>397</b>	<b>454</b>	<b>427</b>	<b>479</b>	<b>441</b>
<b>Extension</b>	A.A.	9	7	18	6	12
	A.L.B.	106	111	115	127	146
	A.L.M.	189	311	430	523	551
	Grad. Cert.	113	85	74	75	83
	<b>Subtotal</b>	<b>417</b>	<b>514</b>	<b>637</b>	<b>731</b>	<b>792</b>
<b>A.R.T.<sup>(2)</sup></b>	Grad. Cert.	23	22	24	21	24
	<b>Subtotal</b>	<b>23</b>	<b>22</b>	<b>24</b>	<b>21</b>	<b>24</b>
<b>TOTAL</b>		<b>7,015</b>	<b>7,182</b>	<b>7,060</b>	<b>7,336</b>	<b>7,416</b>

(1) Graduate School of Arts and Sciences

(2) American Repertory Theater

SOURCE: SCHOOL REGISTRARS

**Harvard College Degrees Conferred by Concentration  
Academic Years 2007-2011**

	<b>Concentration</b>	<b>2007</b>	<b>2008</b>	<b>2009</b>	<b>2010</b>	<b>2011</b>	
<b>Humanities</b>	Classics	19	12	12	14	17	
	Comparative Study of Religion	8	10	13	11	14	
	East Asian Studies	7	14	26	18	18	
	English and American Literature and Language	88	88	90	85	81	
	Folklore and Mythology	2	3	4	11	4	
	German	3	4	-	4	5	
	History and Literature	52	44	54	53	58	
	History of Art and Architecture	18	19	23	18	25	
	Linguistics	9	13	11	9	13	
	Literature	19	21	16	15	15	
	Music	9	15	15	18	8	
	Near Eastern Languages and Civilizations	14	14	6	6	7	
	Philosophy	30	12	14	20	22	
	Romance Languages and Literatures	19	22	15	9	26	
	Sanskrit and Indian Studies	3	1	1	1	1	
	Slavic Languages and Literature	5	6	3	1	7	
	Visual and Environmental Studies	37	28	23	42	26	
	<b>Humanities Subtotal</b>	<b>342</b>	<b>326</b>	<b>326</b>	<b>335</b>	<b>347</b>	
<b>Natural Sciences</b>	Applied Mathematics	43	32	44	46	59	
	Astrophysics	6	3	4	6	6	
	Biochemical Sciences	90	82	59	5	2	
	Biomedical Engineering	0	0	-	-	4	
	Biology	80	68	45	3	-	
	Chemical and Physical Biology	0	5	12	22	15	
	Chemistry	25	29	29	30	34	
	Chemistry and Physics	18	12	21	10	11	
	Computer Science	34	23	25	40	36	
	Earth and Planetary Sciences	13	14	15	11	5	
	Engineering Sciences (A.B. and S.B.)	34	33	31	36	38	
	Environmental Science and Public Policy	19	21	20	14	19	
	Human Evolutionary Biology	19	25	48	43	41	
	Mathematics	50	41	56	41	33	
	Molecular and Cellular Biology	0	3	30	62	63	
	Neurobiology	22	26	29	55	69	
	Organismic and Evolutionary Biology	4	8	25	24	33	
	Physics	45	30	44	27	36	
	Statistics	1	4	4	9	13	
	<b>Natural Sciences Subtotal</b>	<b>503</b>	<b>459</b>	<b>541</b>	<b>484</b>	<b>517</b>	
<b>Social Sciences</b>	African and African American Studies	12	5	12	13	6	
	Anthropology	52	77	45	58	39	
	Economics	262	277	249	295	209	
	Government	211	225	177	140	183	
	History	74	68	81	105	64	
	History of Science	35	23	39	36	47	
	Psychology	130	112	97	95	93	
	Social Studies	93	101	108	94	86	
	Sociology	39	25	38	44	71	
	Studies of Women, Gender and Sexuality	9	11	8	5	8	
		<b>Social Sciences Subtotal</b>	<b>917</b>	<b>924</b>	<b>854</b>	<b>885</b>	<b>806</b>
		<b>Special Concentrations Subtotal</b>	<b>10</b>	<b>14</b>	<b>5</b>	<b>11</b>	<b>12</b>
		<b>Total, Duplicated</b>	<b>1,772</b>	<b>1,723</b>	<b>1,726</b>	<b>1,715</b>	<b>1,682</b>
	<b>Total, Unduplicated</b>	<b>1,696</b>	<b>1,644</b>	<b>1,664</b>	<b>1,674</b>	<b>1,646</b>	

-Both concentrations for joint concentrators are included; this results in a "duplicated" total. The "unduplicated" total counts graduates once across the C  
SOURCE: FACULTY OF ARTS AND SCIENCES REGISTRAR

## Degrees Conferred by Gender, 2011

	Men	Women	Total
College	817	829	<b>1,646</b>
GSAS <sup>(1)</sup>	532	388	<b>920</b>
Business	606	345	<b>951</b>
Dental	28	45	<b>73</b>
Design	133	116	<b>249</b>
Divinity	73	69	<b>142</b>
Education	179	521	<b>700</b>
Government	310	203	<b>513</b>
Law	418	351	<b>769</b>
Medical	107	89	<b>196</b>
Public Health	180	261	<b>441</b>
Extension	424	368	<b>792</b>
A.R.T. <sup>(2)</sup>	10	14	<b>24</b>
<b>Total</b>	<b>3,817</b>	<b>3,599</b>	<b>7,416</b>

## Degrees Conferred by Minority and International Status, 2011

	Minority	Non-Minority	Inter-national	Total
College	573	895	178	<b>1,646</b>
GSAS <sup>(1)</sup>	129	469	322	<b>920</b>
Business	178	447	326	<b>951</b>
Dental	21	39	13	<b>73</b>
Design	51	124	74	<b>249</b>
Divinity	42	86	14	<b>142</b>
Education	210	408	82	<b>700</b>
Government	80	227	206	<b>513</b>
Law	151	405	213	<b>769</b>
Medical	83	96	17	<b>196</b>
Public Health	91	171	179	<b>441</b>
Extension	201	482	109	<b>792</b>
A.R.T. <sup>(2)</sup>	1	23	-	<b>24</b>
<b>TOTAL</b>	<b>1,811</b>	<b>3,872</b>	<b>1,733</b>	<b>7,416</b>

## Degrees Conferred by Level, Ethnicity, and Gender, 2011

	American Indian or Alaska Native	Asian	Black or African American	Hispanic or Latino	Native Hawaiian or Other Pacific Islander	Two or More Races	White	Unknown	International	Total
<i>Undergraduate</i>	11	283	133	143	1	41	823	185	184	<b>1,804</b>
Men	7	125	61	74	-	13	420	97	96	<b>893</b>
Women	4	158	72	69	1	28	403	88	88	<b>911</b>
<i>Graduate and Professional</i>	18	549	290	268	4	70	2,317	547	1,549	<b>5,612</b>
Men	10	250	131	127	1	27	1,164	321	893	<b>2,924</b>
Women	8	299	159	141	3	43	1,153	226	656	<b>2,688</b>
<b>TOTAL</b>	<b>29</b>	<b>832</b>	<b>423</b>	<b>411</b>	<b>5</b>	<b>111</b>	<b>3,140</b>	<b>732</b>	<b>1,733</b>	<b>7,416</b>
<b>Men</b>	<b>17</b>	<b>375</b>	<b>192</b>	<b>201</b>	<b>1</b>	<b>40</b>	<b>1,584</b>	<b>418</b>	<b>989</b>	<b>3,817</b>
<b>Women</b>	<b>12</b>	<b>457</b>	<b>231</b>	<b>210</b>	<b>4</b>	<b>71</b>	<b>1,556</b>	<b>314</b>	<b>744</b>	<b>3,599</b>

(1) Graduate School of Arts and Sciences

(2) American Repertory Theater

-Minority: not "White," "Unknown," or "International"

-International: Nonresident Alien

SOURCE: SCHOOL REGISTRARS

## Faculty and Staff Full-Time Equivalent Counts, Fall 2011

	Faculty <sup>(1)</sup>	Research and Other Academic <sup>(2)</sup>	Administrative and Professional	Clerical and Technical	Service and Trades	Grand Total
<b>By Unit</b>						
<b>Schools</b>	<b>2,249.9</b>	<b>2,625.0</b>	<b>3,637.9</b>	<b>3,360.8</b>	<b>74.4</b>	<b>11,948.1</b>
Arts and Sciences	887.1	868.4	1,135.3	1,064.8	-	3,955.7
Engineering	231.2	90.7	727.4	288.5	9.5	1,347.3
Business	56.5	24.4	23.7	64.7	-	169.3
Dental	57.3	8.7	56.5	47.7	-	170.2
Design	48.2	2.2	51.2	35.0	-	136.6
Divinity	70.9	42.1	174.7	135.7	-	423.4
Education	83.6	231.2	143.5	102.9	10.0	571.3
Government	116.0	100.0	262.0	204.3	-	682.4
Law	123.6	40.2	262.9	208.5	-	635.1
Medical	409.7	755.0	488.3	774.3	55.0	2,482.2
Public Health	159.3	460.0	249.4	405.9	-	1,274.7
Radcliffe	6.4	2.0	63.0	28.5	-	99.9
<b>Allied Institutions</b>	<b>4.5</b>	<b>8.1</b>	<b>265.8</b>	<b>142.4</b>	<b>37.6</b>	<b>458.4</b>
<b>Central Administration</b>	<b>20.8</b>	<b>10.2</b>	<b>1,594.1</b>	<b>930.3</b>	<b>929.7</b>	<b>3,485.1</b>
Core Departments <sup>(2)</sup>	20.3	3.5	939.7	596.5	73.0	1,633.1
Service Departments	0.6	6.7	654.4	333.8	856.7	1,852.1
<b>Non-Departmental and Special</b>	<b>-</b>	<b>-</b>	<b>52.4</b>	<b>62.3</b>	<b>-</b>	<b>114.8</b>
<b>TOTAL</b>	<b>2,275.3</b>	<b>2,643.3</b>	<b>5,550.2</b>	<b>4,495.9</b>	<b>1,041.8</b>	<b>16,006.4</b>
<b>By Gender</b>						
<b>Men</b>	1,567.6	1,570.8	2,309.6	1,453.7	737.1	7,638.8
<b>Women</b>	707.7	1,072.5	3,240.6	3,042.2	304.6	8,367.6
<b>TOTAL</b>	<b>2,275.3</b>	<b>2,643.3</b>	<b>5,550.2</b>	<b>4,495.9</b>	<b>1,041.8</b>	<b>16,006.4</b>
<b>By Race/Ethnicity</b>						
<b>American Indian or Alaska Native</b>	1.8	2.9	9.5	6.0	1.0	21.2
<b>Asian</b>	229.2	329.1	323.3	328.6	38.6	1,248.7
<b>Black or African American</b>	65.4	53.9	193.6	409.3	175.0	897.3
<b>Hispanic of any Race</b>	62.7	71.8	193.3	319.0	254.6	901.4
<b>Native Hawaiian or Other Pacific Islander</b>	-	1.1	3.0	6.0	2.0	12.1
<b>Two or More Races</b>	20.8	21.5	62.5	78.6	9.6	193.0
<b>Unknown</b>	9.8	15.8	49.3	21.4	4.0	100.3
<b>White</b>	1,714.4	1,126.3	4,672.7	3,267.5	514.8	11,295.8
<b>International</b>	171.0	1,021.0	43.0	59.4	42.2	1,336.6
<b>TOTAL</b>	<b>2,275.3</b>	<b>2,643.3</b>	<b>5,550.2</b>	<b>4,495.9</b>	<b>1,041.8</b>	<b>16,006.4</b>
<b>By Location</b>						
<b>Cambridge</b>	1,431.7	1,271.5	3,806.9	2,729.7	884.2	10,124.0
<b>Boston</b>	807.1	1,321.2	1,367.9	1,548.2	157.6	5,201.9
<b>Allston</b>	230.2	110.8	545.1	381.6	58.9	1,326.5
<b>Longwood Medical Area</b>	516.0	1,185.2	711.8	1,099.6	81.7	3,594.4
<b>Other Boston</b>	60.8	25.2	111.0	67.1	17.0	281.0
<b>Other</b>	36.5	50.6	375.4	218.0	-	680.5
<b>Total</b>	<b>2,275.3</b>	<b>2,643.3</b>	<b>5,550.2</b>	<b>4,495.9</b>	<b>1,041.8</b>	<b>16,006.4</b>
<b>By Funding Type</b>						
<b>Sponsored Funding</b>	241.5	1,591.1	260.9	577.8	-	2,671.1
<b>University Funding</b>	2,033.8	1,052.3	5,289.3	3,918.1	1,041.8	13,335.3
<b>TOTAL</b>	<b>2,275.3</b>	<b>2,643.3</b>	<b>5,550.2</b>	<b>4,495.9</b>	<b>1,041.8</b>	<b>16,006.4</b>

-Active, paid appointments as of 10/31/2011

-International: nonresident alien

-SOURCE: HARVARD HUMAN RESOURCES

## Tuition at Harvard Schools: 1992 - 2012

Academic Year	College	GSAS	Business	Design	Divinity	Education	Government	Law	Medical/Dental <sup>(1)</sup>	Public Health <sup>(2)</sup>
1991-92	14,860	14,860	17,500	15,450	9,940	14,192	14,662	15,560	19,110	14,790
1992-93	15,870	15,870	18,550	16,650	10,540	15,044	15,690	16,730	20,257	15,675
1993-94	16,856	16,856	19,750	17,483	11,070	15,796	16,631	17,750	21,260	16,775
1994-95	17,851	17,851	21,000	18,360	11,630	16,664	17,710	19,080	22,300	17,770
1995-96	18,838	18,838	22,700	19,276	12,220	17,581	18,650	20,500	23,192	18,840
1996-97	19,770	19,770	23,840	20,240	12,830	18,460	19,770	21,700	24,150	19,800
1997-98	20,600	20,600	25,000	21,252	13,480	19,476	20,720	22,800	25,200	20,890
1998-99	21,342	21,342	26,260	22,208	14,160	20,430	21,656	23,900	26,000	21,895
1999-00	22,054	22,054	27,250	23,163	14,870	21,410	22,520	25,000	27,000	22,950
2000-01	22,694	22,694	28,500	24,159	15,620	22,600	23,400	26,000	28,000	23,980
2001-02	23,457	23,370	30,050	25,195	16,400	23,720	24,320	27,500	29,000	25,050
2002-03	24,630	24,630	31,800	26,330	17,220	25,144	26,488	29,500	30,500	26,300
2003-04	26,066	26,066	33,650	27,910	18,080	26,628	28,580	31,250	32,000	27,670
2004-05	27,448	27,448	35,600	29,500	18,984	28,092	30,272	33,120	34,250	29,300
2005-06	28,752	28,752	37,500	30,916	19,920	29,360	31,752	35,100	35,800	30,620
2006-07	30,275	30,275	39,600	32,152	20,712	30,544	33,276	37,100	37,200	31,800
2007-08	31,456	31,456	41,900	33,438	21,544	31,696	34,807	39,325	38,600	34,085
2008-09	32,557	32,556	43,800	34,608	22,080	32,896	36,168	41,500	39,900	35,403
2009-10	33,696	33,696	46,150	35,992	22,856	34,208	37,576	43,900	42,500	36,125
2010-11	34,976	34,976	48,600	37,432	23,544	35,568	39,041	45,450	45,050	37,230
2011-12	\$36,305	\$36,304	\$51,200	\$38,880	\$24,250	\$36,992	\$40,017	\$47,600	\$47,500	\$38,675

## Compound Annual Growth Rates

	College	GSAS	Business	Design	Divinity	Education	Government	Law	Medical/Dental	Public Health
20 YEAR	4.6%	4.6%	5.5%	4.7%	4.6%	4.9%	5.1%	5.7%	4.7%	4.9%
10 YEAR	4.5%	4.5%	5.5%	4.4%	4.0%	4.5%	5.1%	5.6%	5.1%	4.4%
5 YEAR	3.7%	3.7%	5.3%	3.9%	3.2%	3.9%	3.8%	5.1%	5.0%	4.0%
1 YEAR	3.8%	3.8%	5.3%	3.9%	3.0%	4.0%	2.5%	4.7%	5.4%	3.9%

(1) Dental School tuition was \$35,790 for 2006 and \$26,050 for 1999.

(2) Beginning in FY2008, HSPH implemented different full-time tuition amounts for one-year programs (MPH, MS 1-year) and multiple-year programs (MS 2-year and DS). Amount shown in table is for one-year programs. Full-time tuition for two-year Master's programs for FY2010 is \$34,000 and for FY2011 is \$35,040.

SOURCE: ANNUAL TUITION PROPOSALS APPROVED BY THE CORPORATION.

## Undergraduate Tuition and Fees: 1992 - 2012

Academic Year	Undergraduate Package						Economic Indicators			
	Health Services			Student Services			CPI-U (1982-84=100)		HEPI	Median Family Income
	Tuition	Fee	Room	Board	Fee	Total	US	Boston	(1983=100)	Ages 45-54
<b>1991-92</b>	14,860	550	2,900	2,620	1,150	22,080	136.2	145.0	148.1	47,164
<b>1992-93</b>	15,870	584	3,075	2,765	1,220	23,514	140.3	148.6	153.4	49,606
<b>1993-94</b>	16,856	614	3,225	2,910	1,275	24,880	144.5	152.9	157.9	50,079
<b>1994-95</b>	17,851	634	3,370	3,040	1,335	26,230	148.2	154.9	163.3	52,034
<b>1995-96</b>	18,838	634	3,510	3,200	1,393	27,575	152.4	158.6	168.3	54,379
<b>1996-97</b>	19,770	654	3,659	3,336	1,477	28,896	156.9	163.3	173.3	55,029
<b>1997-98</b>	20,600	666	3,808	3,470	1,536	30,080	160.5	167.9	178.6	57,161
<b>1998-99</b>	21,342	686	3,940	3,574	1,590	31,132	163.0	171.7	184.9	59,959
<b>1999-00</b>	22,054	711	4,072	3,685	1,642	32,164	166.6	176.0	189.1	61,833
<b>2000-01</b>	22,694	745	4,190	3,792	1,689	33,110	172.2	183.6	196.9	65,303
<b>2001-02</b>	23,457	816	4,331	3,919	1,746	34,269	177.1	191.5	206.5	68,082
<b>2002-03</b>	24,630	1,020	4,461	4,041	1,798	35,950	179.9	196.5	212.7	68,114
<b>2003-04</b>	26,066	1,142	4,706	4,162	1,852	37,928	184.0	203.9	223.5	69,180
<b>2004-05</b>	27,448	1,264	4,974	4,286	1,908	39,880	188.9	209.5	231.7	70,149
<b>2005-06</b>	28,752	1,370	5,148	4,430	1,975	41,675	195.3	216.4	240.8	71,002
<b>2006-07</b>	30,275	1,390	5,328	4,618	2,044	43,655	201.6	223.1	253.1	72,881
<b>2007-08</b>	31,456	1,426	5,856	4,766	2,116	45,620	207.3	227.4	260.3	75,692
<b>2008-09</b>	32,557	1,426	6,060	4,982	2,190	47,215	215.3	235.4	273.2	77,440
<b>2009-10</b>	33,696	1,126	7,248	4,608	2,190	48,868	214.5	233.8	279.3	75,651
<b>2010-11</b>	34,976	1,166	7,525	4,783	2,273	50,723	218.1	237.4	281.8	75,707
<b>2011-12</b>	\$36,305	\$1,186	\$7,811	\$4,990	\$2,360	\$52,652	224.9	243.9	288.4	\$74,739

## Compound Annual Growth Rates

	Undergraduate Package						Economic Indicators <sup>(1)</sup>			
	Health Services			Student Services			CPI-U (1982-84=100)		HEPI	Median Family Income
	Tuition	Fee	Room	Board	Fee	Total	US	Boston	(1983=100)	Ages 45-54
<b>20 YEAR</b>	4.7%	4.4%	5.3%	3.5%	3.8%	4.6%	2.5%	2.6%	3.4%	2.3%
<b>10 YEAR</b>	4.4%	4.6%	6.0%	2.3%	3.0%	4.4%	2.4%	2.4%	3.4%	0.9%
<b>5 YEAR</b>	4.0%	-3.2%	7.9%	1.5%	2.9%	4.0%	2.2%	1.8%	2.6%	0.5%
<b>1 YEAR</b>	3.8%	3.6%	3.8%	3.8%	3.8%	3.8%	3.2%	2.7%	2.3%	-1.3%

(1) Economic Indicators are based on the most recent indicators available at time of publication.

SOURCE: HARVARD COLLEGE; BUREAU OF LABOR STATISTICS, US CENSUS BUREAU, COMMONFUND INSTITUTE.



## Degree Student Financial Support: Academic Year 2011 <sup>(1)</sup>

Expressed in thousands of dollars

### GRANTS

	Institutional	Federal	Other Outside	Total	Grants as a % of Total School Aid
College	\$150,126	\$9,665	\$10,329	<b>\$170,120</b>	89.5%
GSAS <sup>(2)</sup>	89,620	24,437	13,200	<b>127,258</b>	75.3%
Business <sup>(3)</sup>	29,361	2,323	1,730	<b>33,413</b>	45.6%
Dental	1,616	21	80	<b>1,718</b>	16.7%
Design	9,484	9	1,389	<b>10,882</b>	50.6%
Divinity	9,017	40	121	<b>9,178</b>	75.6%
Education	12,236	149	1,919	<b>14,305</b>	47.9%
Government	17,971	2,264	6,782	<b>27,017</b>	62.5%
Law	23,536	654	2,915	<b>27,106</b>	31.0%
Medical	15,712	3,817	2,596	<b>22,125</b>	63.1%
Public Health	9,216	3,044	3,905	<b>16,165</b>	68.1%
Extension	995	560	54	<b>1,610</b>	6.8%
A.R.T. <sup>(4)</sup>	89	9	25	<b>123</b>	7.7%
<b>TOTAL</b>	<b>\$368,980</b>	<b>\$46,993</b>	<b>\$45,046</b>	<b>\$461,020</b>	<b>65.3%</b>

#### Grants

Institutional grants are from University unrestricted and restricted monies.

Federal grants include all Federal programs in each school including programs such as the Pell grant, SEOG or graduate training grants.

Outside grants include state and private support of students. In some schools, these numbers may include corporate sponsorship or other sponsored billing.

### LOANS

	Institutional	Federal <sup>(5)</sup>	Other Outside	Total	Loans as a % of Total School Aid
College <sup>(6)</sup>	\$4,923	\$7,325	\$1,429	<b>\$13,678</b>	7.2%
GSAS	220	1,453	178	<b>1,852</b>	1.1%
Business	195	22,196	17,493	<b>39,884</b>	54.4%
Dental	160	7,713	713	<b>8,586</b>	83.3%
Design	86	9,319	785	<b>10,190</b>	47.4%
Divinity	-	2,348	-	<b>2,348</b>	19.3%
Education	133	14,475	372	<b>14,980</b>	50.2%
Government	147	13,376	1,420	<b>14,943</b>	34.6%
Law	3,538	51,458	3,914	<b>58,910</b>	67.4%
Medical	3,536	9,070	307	<b>12,914</b>	36.8%
Public Health	146	5,589	1,748	<b>7,482</b>	31.5%
Extension	-	7,054	691	<b>7,744</b>	32.6%
A.R.T. <sup>(4)</sup>	-	1,435	-	<b>1,435</b>	89.3%
<b>TOTAL</b>	<b>\$13,084</b>	<b>\$152,812</b>	<b>\$29,051</b>	<b>\$194,947</b>	<b>27.6%</b>

#### Loans

Institutional loans are made to students from University capital without Federal guarantee.

Federal loan programs may involve capital from Harvard, or other private or Federal sources, loaned under Federal sponsorship such as Perkins, Direct Loans and FFEL programs.

Outside loans include private capital loaned to students or parents. It excludes personal loans.

### EMPLOYMENT

	Federal Work-Study	Other Term	Total	Employment as a % of Total School Aid	GRAND TOTAL Grant, Loans & Employment
College	\$915	\$5,364	<b>\$6,279</b>	3.3%	<b>\$190,077</b>
GSAS	456	39,361	<b>39,816</b>	23.6%	<b>168,926</b>
Business	-	-	-	0.0%	<b>73,298</b>
Dental	1	-	<b>1</b>	0.0%	<b>10,304</b>
Design	351	88	<b>439</b>	2.0%	<b>21,511</b>
Divinity	613	-	<b>613</b>	5.0%	<b>12,139</b>
Education	581	-	<b>581</b>	1.9%	<b>29,865</b>
Government	279	968	<b>1,247</b>	2.9%	<b>43,208</b>
Law	636	773	<b>1,409</b>	1.6%	<b>87,425</b>
Medical	27	-	<b>27</b>	0.1%	<b>35,065</b>
Public Health	76	-	<b>76</b>	0.3%	<b>23,723</b>
Extension	-	-	-	0.0%	<b>9,354</b>
A.R.T. <sup>(4)</sup>	25	24	<b>49</b>	3.0%	<b>1,607</b>
<b>TOTAL</b>	<b>\$3,959</b>	<b>\$46,577</b>	<b>\$50,536</b>	<b>7.2%</b>	<b>\$706,503</b>

#### Employment

Work-Study is a Federally-sponsored partnership with colleges and universities to provide students with the opportunity to work while in school.

Other term earnings reflect on-campus earnings by students who are not part of the work-study program. Jobs include casual employment (to the extent known), teaching fellowships, research assistantships and resident tutors.

(1) Financial support includes awards that allow students to pursue summer research study/projects. Amounts do not include the Business School, Law School, Medical School or the School of Government funding for graduates in the Low Income Protection Plan/Loan Repayment Assistance Programs.

(2) Graduate School of Arts and Sciences.

(3) Total excludes students receiving \$12,699,009 in financial aid through employee assistance or sponsored billing.

(4) American Repertory Theater

(5) The federal loans amount excludes the loan fee.

(6) College total for loans includes \$7,453,180 in PLUS Loans and other Parental Loans.

SOURCE: INTERNAL SURVEY

# Federal Sponsored Research Expenditures: Fiscal Year 2010 - Fiscal Year 2011

Expressed in thousands of dollars

	Fiscal Year 2010			Fiscal Year 2011			Change in Total Costs 2010/2011	FY2011 Effective Indirect Cost Rate <sup>(1)</sup>
	Direct Costs	Indirect Costs	Total Costs	Direct Costs	Indirect Costs	Total Costs		
<b>FACULTIES</b>								
<b>Faculty of Arts and Sciences</b> <sup>(2)</sup>	\$72,935	\$34,381	<b>\$107,316</b>	\$86,690	\$39,303	<b>\$125,993</b>	17.4%	<b>45.3%</b>
<b>Engineering and Applied Sciences</b> <sup>(3)</sup>	22,698	11,077	<b>33,775</b>	28,323	14,079	<b>42,402</b>	25.5%	<b>49.7%</b>
<b>Business</b>	8	-	<b>8</b>	-	-	<b>-</b>		
<b>Dental</b>	5,218	2,938	<b>8,156</b>	7,587	3,611	<b>11,198</b>	37.3%	<b>47.6%</b>
<b>Design</b>	19	-	<b>19</b>	48	20	<b>68</b>	257.9%	<b>41.7%</b>
<b>Education</b>	4,356	1,379	<b>5,735</b>	7,351	2,177	<b>9,528</b>	66.1%	<b>29.6%</b>
<b>Government</b>	3,777	1,273	<b>5,050</b>	3,792	1,134	<b>4,926</b>	(2.5%)	<b>29.9%</b>
<b>Law School</b>	576	144	<b>720</b>	598	180	<b>778</b>	8.1%	<b>30.1%</b>
<b>Medical</b>	172,781	67,475	<b>240,256</b>	192,442	72,654	<b>265,096</b>	10.3%	<b>37.8%</b>
<b>Public Health</b>	169,344	38,444	<b>207,788</b>	171,026	42,693	<b>213,719</b>	2.9%	<b>25.0%</b>
<b>Faculties Subtotal</b>	<b>\$451,712</b>	<b>\$157,111</b>	<b>\$608,823</b>	<b>\$497,857</b>	<b>\$175,851</b>	<b>\$673,708</b>	<b>10.7%</b>	<b>35.3%</b>
<b>Other Departments</b> <sup>(4)</sup>	<b>\$551</b>	<b>\$203</b>	<b>\$754</b>	<b>\$3,584</b>	<b>\$419</b>	<b>\$4,003</b>	<b>430.9%</b>	<b>11.7%</b>
<b>GRAND TOTAL</b> <sup>(5)</sup>	<b>\$452,263</b>	<b>\$157,314</b>	<b>\$609,577</b>	<b>\$501,441</b>	<b>\$176,270</b>	<b>\$677,711</b>	<b>11.2%</b>	<b>35.2%</b>

(1) The effective rate is the indirect costs as a percentage of total direct costs.

(2) Includes FAS Interfaculty Initiatives.

(3) Includes SEAS Interfaculty Initiatives. The WYSS Institute Interfaculty Initiative administrative responsibility was transferred to Harvard Medical School, however, its costs are included only in SEAS' total.

(4) Includes Arnold Arboretum, Central Administration, Harvard University Art Museums, Joint Center for Housing Studies, and University Interfaculty Initiatives.

(5) Totals include both Federal and Federal Once-Removed (Federal Once-Removed total for FY2010 is \$62,277 and for FY2011 is \$72,855). Totals exclude financial aid and agency funds.

SOURCE: OFFICE FOR SPONSORED PROGRAMS

## Federal Research Expenditures by Agency: Fiscal Year 2010 - Fiscal Year 2011

Expressed in thousands of dollars

	FY2010	FY2011	% Change	FY2011 Total as % of Federal Total
<b>Department of Health &amp; Human Services</b>				
National Institutes of Health	\$431,176	\$484,286	12.3%	71.5%
Other DHHS	78,397	66,225	(15.5%)	9.8%
<b>Subtotal</b>	<b>\$509,573</b>	<b>\$550,511</b>	<b>8.0%</b>	<b>81.2%</b>
<b>Department of Defense</b>				
Defense Advanced Research Projects Agency <sup>(1)</sup>	10,387	11,796	13.6%	1.7%
Department of the Army	3,104	9,537	207.2%	1.4%
Department of the Navy	3,257	4,718	44.9%	0.7%
Department of the Air Force <sup>(2)</sup>	7,860	6,850	(12.8%)	1.0%
<b>Subtotal</b>	<b>\$24,608</b>	<b>\$32,901</b>	<b>33.7%</b>	<b>4.9%</b>
<b>National Science Foundation</b>	42,074	49,165	16.9%	7.3%
<b>Department of Energy</b>	9,499	12,031	26.7%	1.8%
<b>National Aeronautics and Space Administration</b>	9,482	9,886	4.3%	1.5%
<b>Department of Education</b>	5,114	8,171	59.8%	1.2%
<b>Other Federal Agencies</b>	746	3,292	341.3%	0.5%
<b>Environmental Protection Agency</b>	3,403	2,659	(21.9%)	0.4%
<b>Department of State</b>	2,326	2,365	1.7%	0.3%
<b>Agency for International Development</b>	1,034	1,247	20.6%	0.2%
<b>Department of Transportation</b>	732	1,005	37.3%	0.1%
<b>Department of Commerce</b>	427	987	131.1%	0.1%
<b>National Endowment for the Humanities</b>	274	835	204.7%	0.1%
<b>Department of Justice</b>	528	679	28.6%	0.1%
<b>Neighborhood Reinvestment Corporation</b>	210	403	91.9%	0.1%
<b>Department of Interior</b>	120	396	230.0%	0.1%
<b>Department of Homeland Security</b>	262	334	27.5%	0.0%
<b>Smithsonian Institution</b>	117	259	121.4%	0.0%
<b>Department of Veterans Affairs</b>	767	210	(72.6%)	0.0%
<b>Central Intelligence Agency</b>	565	198	(65.0%)	0.0%
<b>Department of Agriculture</b>	108	125	15.7%	0.0%
<b>Department of Housing and Urban Development</b>	69	44	(36.2%)	0.0%
<b>Library of Congress</b>	66	8	(87.9%)	0.0%
<b>GRAND TOTAL <sup>(3)</sup></b>	<b>\$612,103</b>	<b>\$677,711</b>	<b>10.7%</b>	<b>100.0%</b>

(1) Includes Other - Department of Defense.

(2) Includes Air Force Office of Scientific Research

(3) Totals include both Federal and Federal Once-Removed (Federal Once-Removed total cost for FY2010 is \$62,277 and for FY2011 is \$72,855). Totals exclude financial aid and agency funds.

SOURCE: OFFICE FOR SPONSORED PROGRAMS

## Non-Federal Sponsored Research Expenditures: Fiscal Year 2010 - Fiscal Year 2011

Expressed in thousands of dollars

	Fiscal Year 2010			Fiscal Year 2011			Change in Total Costs 2010/2011	FY2011 Effective Indirect Cost Rate <sup>(1)</sup>
	Direct Costs	Indirect Costs	Total Costs	Direct Costs	Indirect Costs	Total Costs		
<b>FACULTIES</b>								
Faculty of Arts and Sciences <sup>(2)</sup>	\$35,473	\$3,891	<b>\$39,364</b>	\$33,662	\$3,897	<b>\$37,559</b>	(4.6%)	11.6%
Engineering and Applied Sciences	6,007	2,445	<b>8,452</b>	5,249	2,503	<b>7,752</b>	(8.3%)	47.7%
Business	23	-	<b>23</b>	-	-	<b>-</b>	(100.0%)	
Dental	148	10	<b>158</b>	449	60	<b>509</b>	222.2%	13.4%
Design	367	59	<b>426</b>	480	79	<b>559</b>	31.2%	16.5%
Divinity	104	10	<b>114</b>	104	16	<b>120</b>	5.3%	15.4%
Education	10,894	1,047	<b>11,941</b>	10,093	1,030	<b>11,123</b>	(6.9%)	10.2%
Government	17,611	2,662	<b>20,273</b>	18,048	2,845	<b>20,893</b>	3.1%	15.8%
Law	5,190	327	<b>5,517</b>	4,182	299	<b>4,481</b>	(18.8%)	7.1%
Medical	31,571	4,949	<b>36,520</b>	31,139	5,646	<b>36,785</b>	0.7%	18.1%
Public Health	28,229	3,996	<b>32,225</b>	28,901	4,088	<b>32,989</b>	2.4%	14.1%
Radcliffe Institute for Advanced Study	32	-	<b>32</b>	27	-	<b>27</b>	(15.6%)	0.0%
<b>Faculties Subtotal</b>	<b>\$135,649</b>	<b>\$19,396</b>	<b>\$155,045</b>	<b>\$132,334</b>	<b>\$20,463</b>	<b>\$152,797</b>	<b>(1.4%)</b>	<b>15.5%</b>
<b>Other Departments <sup>(3)</sup></b>	<b>\$2,299</b>	<b>\$97</b>	<b>\$2,396</b>	<b>\$2,598</b>	<b>\$92</b>	<b>\$2,690</b>	<b>12.3%</b>	<b>3.5%</b>
<b>GRAND TOTAL <sup>(4)</sup></b>	<b>\$137,948</b>	<b>\$19,493</b>	<b>\$157,441</b>	<b>\$134,932</b>	<b>\$20,555</b>	<b>\$155,487</b>	<b>(1.2%)</b>	<b>15.2%</b>

(1) The effective rate is the indirect cost as a percentage of total direct cost.

(2) Includes FAS Interfaculty Initiatives.

(3) Includes Arnold Arboretum, Harvard University Art Museums, Joint Center for Housing Studies, Nieman Foundation, Villa I Tatti, University Library, University Health Services, and University Interfaculty Initiatives.

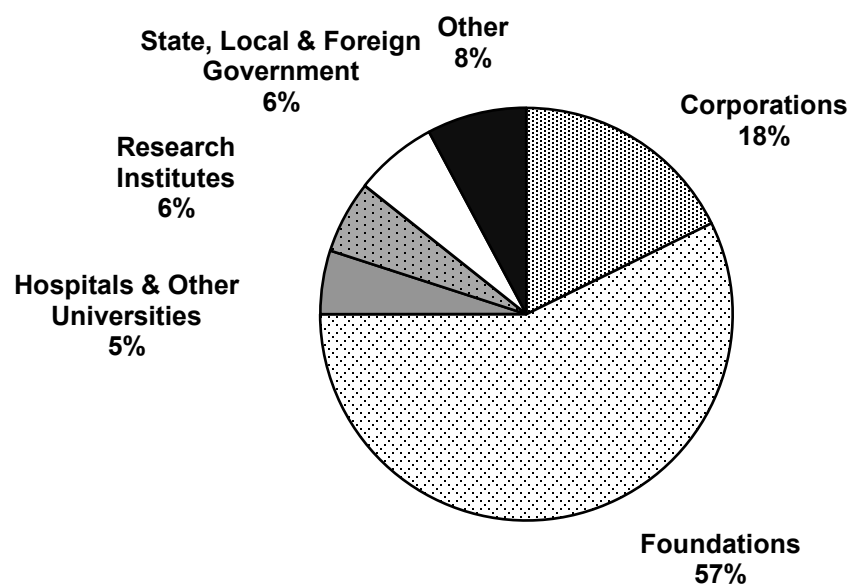
(4) Total excludes financial aid expenditures and agency funds.

SOURCE: OFFICE FOR SPONSORED PROGRAMS

# Non-Federal Expenditures by Sponsor Type: Fiscal Year 2011

Expressed in thousands of dollars

	Corporations	Foundations	Hospitals & Other Universities	Research Institutes	State, Local, & Foreign Government	Other Sources	Total
Faculty of Arts and Sciences <sup>(1)</sup>	\$7,238	\$24,191	\$916	\$2,764	\$986	\$1,464	\$37,559
Engineering and Applied Sciences	4,062	979	1,604	224	302	582	7,753
Business	-	-	-	-	-	-	-
Dental	138	290	-	-	34	47	509
Design	269	72	50	54	32	82	559
Divinity	-	107	-	13	-	-	120
Education	188	10,025	221	14	39	637	11,124
Government	1,893	10,378	207	1,245	4,211	2,959	20,893
Law	70	4,211	42	63	95	-	4,481
Medical	8,962	20,567	2,371	2,083	1,505	1,297	36,785
Public Health	4,400	16,357	2,353	2,339	2,911	4,629	32,989
Radcliffe Institute for Advanced Study	-	27	-	-	-	-	27
<b>Faculties Subtotal</b>	<b>\$27,220</b>	<b>\$87,204</b>	<b>\$7,764</b>	<b>\$8,799</b>	<b>\$10,115</b>	<b>\$11,697</b>	<b>\$152,799</b>
Other Departments <sup>(2)</sup>	\$359	\$1,825	\$3	\$55	\$9	\$438	\$2,689
<b>GRAND TOTAL <sup>(3)</sup></b>	<b>\$27,579</b>	<b>\$89,029</b>	<b>\$7,767</b>	<b>\$8,854</b>	<b>\$10,124</b>	<b>\$12,135</b>	<b>\$155,488</b>



(1) Includes FAS Interfaculty Initiatives

(2) Includes Arnold Arboretum, Harvard University Art Museums, Joint Center for Housing Studies, Nieman Foundation, Villa I Tatti, University Interfaculty Initiatives, University Health Services, and University Library.

(3) Total excludes financial aid expenditures and agency funds.

SOURCE: OFFICE FOR SPONSORED PROGRAMS

## Historical Research Expenditures by Sponsor

Expressed in thousands of dollars

### Federal (Prime and Once-Removed)

	Fiscal Year				
	2007	2008	2009	2010	2011
National Institutes of Health	\$344,832	\$351,206	\$380,767	\$431,176	\$484,286
Other DHHS	66,529	82,578	82,165	78,397	66,225
National Science Foundation	35,886	36,931	38,304	42,074	49,165
Department of Defense	19,451	19,891	21,741	24,608	32,901
Department of Energy	12,037	8,513	7,436	9,499	12,031
National Aeronautics and Space Administration	10,170	9,934	7,209	9,482	9,886
Department of Education	4,157	2,503	3,035	5,114	8,171
Environmental Protection Agency	5,011	4,230	3,917	3,403	2,659
Department of State	1,658	2,603	2,664	2,326	2,365
Agency for International Development	5,963	3,626	1,123	1,034	1,247
Department of Commerce	1,258	396	395	427	987
Other <sup>(1)</sup>	4,305	6,289	5,786	4,564	7,788
<b>Federal Total</b>	<b>\$511,255</b>	<b>\$528,700</b>	<b>\$554,542</b>	<b>\$612,104</b>	<b>\$677,711</b>

### Non-Federal

	2007	2008	2009	2010	2011
Foundations	\$72,906	\$81,456	\$91,836	\$91,941	\$89,029
Corporations	15,588	19,786	24,339	25,903	27,579
Other Sources	8,879	9,144	9,386	12,000	12,135
State, Local and Foreign Government	13,142	10,585	11,120	10,550	10,124
Research Institutes	3,825	4,801	6,532	8,972	8,854
Hospitals and Other Universities	4,537	5,609	7,319	8,075	7,767
<b>Non-Federal Total</b>	<b>\$118,877</b>	<b>\$131,382</b>	<b>\$150,532</b>	<b>\$157,441</b>	<b>\$155,488</b>
<b>GRAND TOTAL <sup>(2)</sup></b>	<b>\$630,132</b>	<b>\$660,082</b>	<b>\$705,074</b>	<b>\$769,545</b>	<b>\$833,199</b>

### Growth in Sponsored Projects

Expressed in millions of dollars

Fiscal Year	Expenditure Actual \$	% Change	Expressed as FY11 \$	% Change in FY11 \$
2007	630.1	-	682.5	-
2008	660.1	4.8%	689.4	1.0%
2009	705.1	6.8%	726.2	5.3%
2010	\$769.5	9.1%	\$785.0	8.1%
2011	\$833.2	8.3%	\$833.2	6.1%

(1) Agencies listed on this exhibit are based on FY2011 expenditures. Information on agencies in prior years can be obtained from the Office for Sponsored Programs.

(2) Total excludes financial aid expenditures and agency funds.

SOURCE: OFFICE FOR SPONSORED PROGRAMS

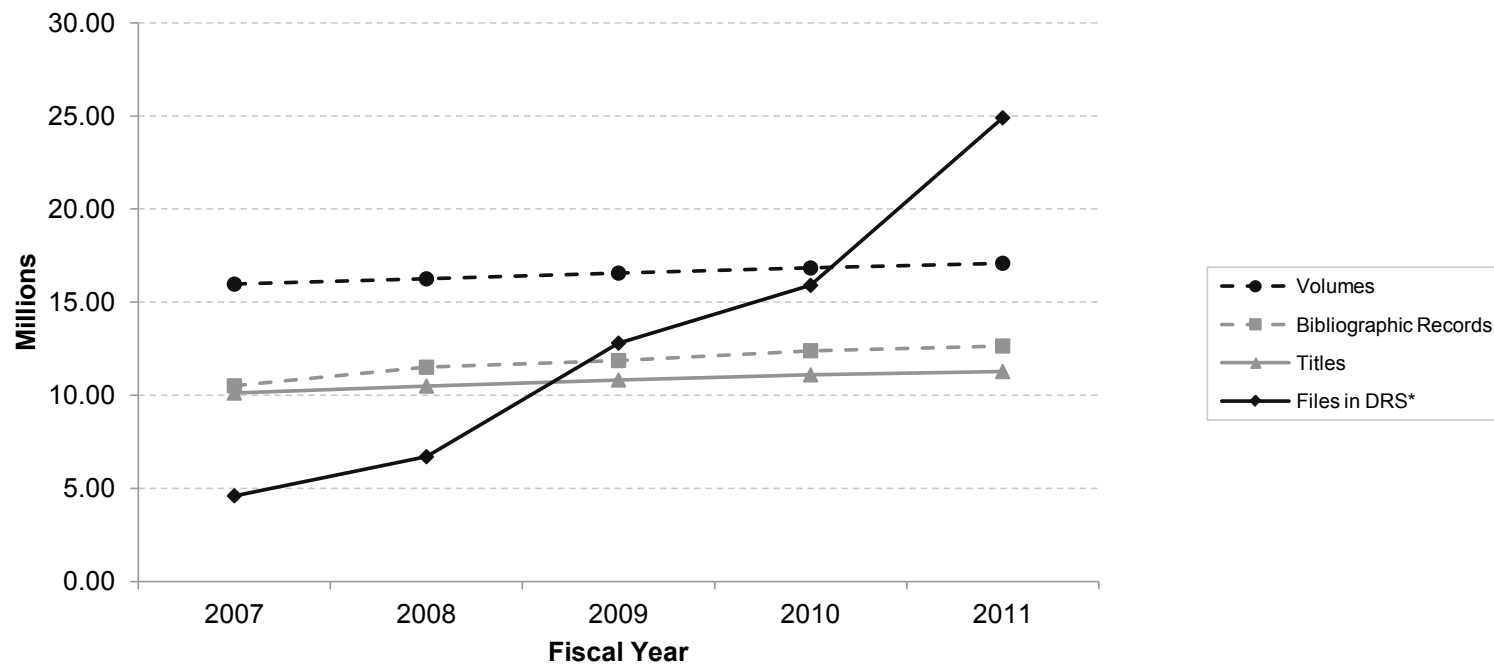
# Harvard Library: FY2011

Harvard's library system now includes more than 70 separate library units, which are operated by nearly 1,000 full-time employees who provide a range of services that ensure access to 17.1 million volumes, 24.8 million digital files, 174,000 serial titles, 8 million photographs, and an estimated 400 million manuscript items.

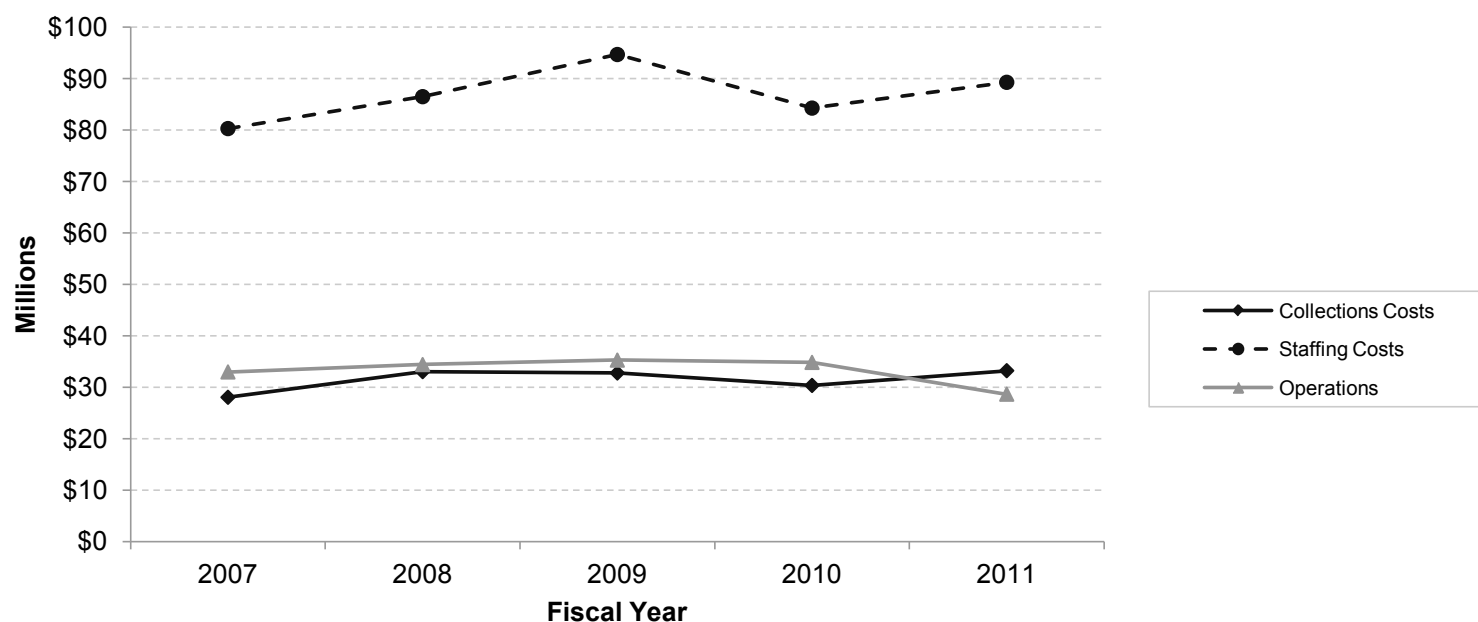
Even these impressive numbers fail to do justice to the importance of the library system for Harvard. For many students, faculty members, and departments, Harvard library collections are at the core of their intellectual experience. Harvard's libraries are not only a local strength, but also a global treasure that supports the scholarly work of an untold number of researchers worldwide.

In 2010, University leaders embraced a series of recommendations for the future of the Harvard Library system to establish a coordinated management structure and increasingly focus resources on the opportunities presented by new information technology. Ultimately, the University seeks to build the hallmark library of the 21st century, a cutting-edge, nimble organization that is collaborative both internally and externally. Ultimately, the new organization will ensure that patrons can find anything at Harvard—whether it's a book, a digital copy of a journal, or an object in one of our museums—regardless of location.

## Volumes, Records, Titles, and Digital Files



## Total Expenditures



\*Digital Repository Service  
SOURCE: HARVARD LIBRARY

# Harvard Library: FY2011

Collections as of June 30, 2011

Expressed in thousands unless otherwise noted

## Formats

Metric	FY 2010	FY 2011	Change
Manuscript items	400,000 *	400,000 *	0%
Volumes	16,800	17,100	2%
Bibliographic records	12,400	12,600	2%
Titles	11,100	11,200	1%
Microforms	10,000 *	10,000 *	0%
Photographs	8,000 *	8,000 *	0%
Items circulated	1,500	751	NA <sup>(1)</sup>
E-Resources	607	650	7%
Serial titles	158	174	10%

\* Numbers provided for manuscript items, microforms, and photographs are estimated based on prior surveys.

## Digital Repository Service (DRS)

Metric	FY 2010	FY 2011	Change
Files	15,888	24,837	56%
Disk storage (gigabytes)	115	127	10%

## Harvard Online Library Information System (HOLLIS)

Metric	FY 2010	FY 2011	Change
Records	12,390	12,695	3%
Searches	3,079	2,355	-24%

Based on a new, user-centric discovery platform, Harvard launched a new version of the HOLLIS union catalog in 2009.

## Visual Information Access (VIA)

Metric	FY 2010	FY 2011	Change
Records	678	784	16%
Records including digital images	545	645	18%
Searches	138	176	27%
Number of images	3,109	3,499	13%

## Online Archival Search Information System (OASIS)

Metric	FY 2010	FY 2011	Change
Records (finding aids)	4.5	4.8	1%
Sessions	480.4	400.5	-17%
Searches	58.5	52.3	-11%
Finding aids displayed	104.8	61.3	-42%

(1) FY 2011 Items Circulated reflects circulation due to patrons visiting the library



## Physical Plant: FY2011

The University owns and operates more than six hundred buildings of varying sizes and characteristics, spread over a wide geographic area. They encompass approximately 26 million gross square feet of space. The physical plant provides living space for students and faculty, research facilities to advance our base of knowledge, classroom and library spaces for the dissemination of knowledge, and space for administrative and support services.

Location <sup>(1)</sup>	Gross Square Footage <sup>(2)</sup> of		Principal Activity on Site
	Acres	Buildings (in 000's)	
Cambridge, MA	209	15,478	Main Campus
Boston, MA	21	3,182	Medical & Dental Schools; School of Public Health
Boston (Allston)	358	5,161	Business School; University Publisher; Athletics, Other
Boston (Jamaica Plain)	238	94	Arnold Arboretum
Watertown MA	14	1,118	Arsenal Buildings
Weston, MA	69	11	Case Estates (Arnold Arboretum)
Somerville, MA	2	96	Affiliated Housing
Medford, MA	1	1	
Bedford, MA	79	11	Concord Field Station
Carlisle, MA	69	0	Concord Field Station
Concord, MA	605	0	Field Station (Museum of Comparative Zoology)
Marlborough, MA	43	0	Animal Research Center (NERPC)
Southborough, MA	87	308	Harvard Depository
Petersham, MA	2,867	73	Harvard Forest (Forestry, Botany)
Hamilton, MA	98	0	Harvard Forest
Phillipston, MA	204	0	Harvard Forest
Royalston, MA	57	0	Harvard Forest
Harvard, MA	37	18	Agassiz Cottage (Observatory)
Shrewsbury, MA	6	16	Artemas Ward Homestead (Museum)
Kittery Point, ME	2	6	Howells Memorial
Ledyard, CT	n/a	21	Red Top Crew Quarters
Washington, DC	17	254	Dumbarton Oaks & Center for Hellenic Studies
Florence & Fiesole, Italy	n/a	94	Villa I Tatti (Center for Italian Renaissance Studies)
Sardis, Turkey	n/a	6	H/AM Archaeological Site
<b>TOTAL</b>	<b>5,083</b>	<b>25,950</b>	

(1) In addition to locations listed above, Harvard has numerous smaller holdings.

(2) As of FY2007, square footage figures are reported according to National Center for Education Statistics Postsecondary Education Facilities Inventory and Classification Manual (FICM) standards. Therefore, values may differ from previous years.

SOURCE: HARVARD PLANNING & PROJECT MANAGEMENT

# Physical Plant: FY2011

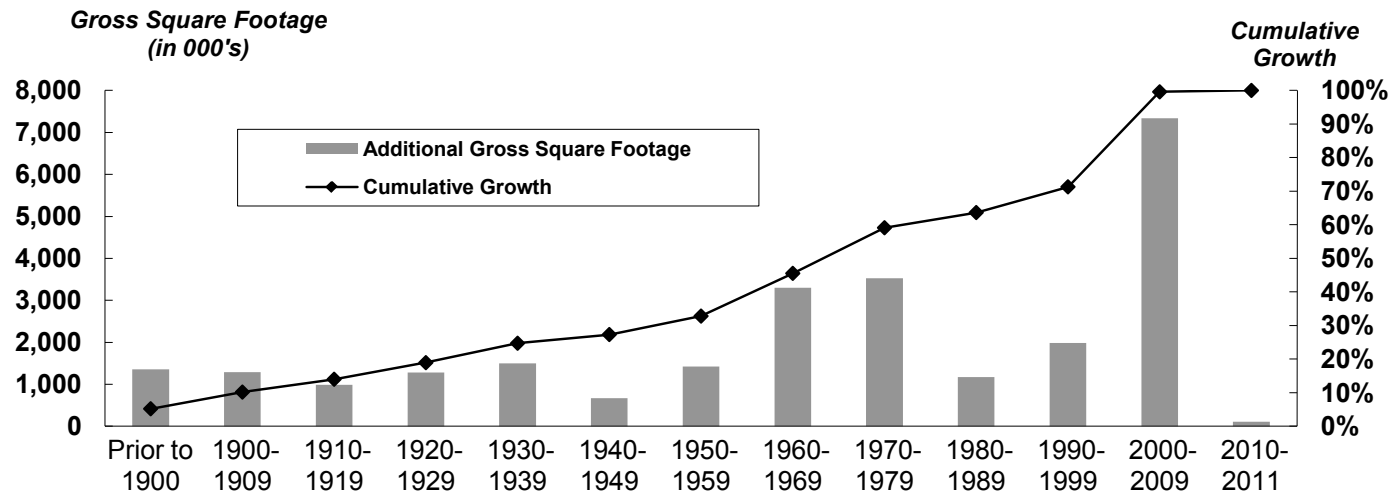
## Building Ownership

	Number of Buildings	Gross Square Footage	
		of Buildings (in 000's)	As a % of Total
FAS <sup>(1)</sup>	257	9,301	35.8%
SEAS <sup>(2)</sup>	5	337	1.3%
Business	33	1,554	6.0%
Dental	2	102	0.4%
Design	6	203	0.8%
Divinity	7	189	0.7%
Education	6	223	0.9%
Government	6	275	1.1%
Law	21	926	3.6%
Medical	26	2,529	9.7%
Radcliffe	15	286	1.1%
Public Health	7	589	2.3%
Real Estate	226	7,945	30.6%
Central Administration	50	1,492	5.7%
<b>TOTAL</b>	<b>667</b>	<b>25,950</b>	<b>100.0%</b>

## Primary Uses

	Gross Square Footage	
	of Buildings (in 000's)	As a % of Total
Residential/Dormitory	7,702	29.7%
Lab/Studio	5,005	19.3%
Office/Classroom	4,775	18.4%
Commercial	2,904	11.2%
Support	1,807	7.0%
Library	1,537	5.9%
Assembly/Museum	1,253	4.8%
Athletic	847	3.3%
Health Care	118	0.5%
<b>TOTAL</b>	<b>25,950</b>	<b>100.0%</b>

## Additions to the Physical Plant



(1) Faculty of Arts and Sciences.

(2) School of Engineering and Applied Sciences.

SOURCE: HARVARD PLANNING & PROJECT MANAGEMENT

## Summary of Environmental Performance at Harvard

### Greenhouse Gas Emissions from Harvard University by Location: FY2011

	Emissions (MTCDE) <sup>(1)</sup>		Percent Change	
	FY2011 Base Building	Baseline FY2006-11	FY2011 Total	Total FY2006-11
Faculty of Arts and Sciences	70,733	22%	90,423	2%
Engineering and Applied Sciences	5,543	4%	5,543	4%
Business	13,440	40%	13,481	40%
Design	1,516	18%	1,530	18%
Divinity	1,073	22%	1,073	22%
Education*	2,010	9%	2,146	3%
Government	2,719	17%	2,763	16%
Law	5,453	33%	7,865	14%
Radcliffe*	1,606	17%	1,606	17%
Public Health*	11,752	13%	11,874	12%
Medical School (Including Dental)*	54,786	-3%	59,945	-9%
HRES/UOS/Others <sup>(2)</sup>	53,876	22%	59,190	15%
<b>TOTAL - North America Campus only</b>	<b>224,507</b>	<b>18%</b>	<b>257,439</b>	<b>7%</b>

The 2011 Harvard University Greenhouse Gas Inventory represents the full breadth of the University's GHG footprint in North America. The inventory covers more than 26 million square feet of space and reports on all of the critical Kyoto protocol gases from both direct (Scope 1) and indirect (Scope 2) sources.

Harvard's emissions are reported annually in two ways, 1) FY06 vs. FY11 for just our Base Buildings (e.g., Buildings that have remained constant since FY 2006) and 2) FY06 vs. FY11 for the Total Campus (including any growth in square footage or usage).

**The data in the table indicate a 7% decline in Harvard's overall GHG Emissions since Fiscal Year 2006, including growth, from a Fiscal Year 2006 baseline, with a 18% decline in emissions if growth is excluded.**

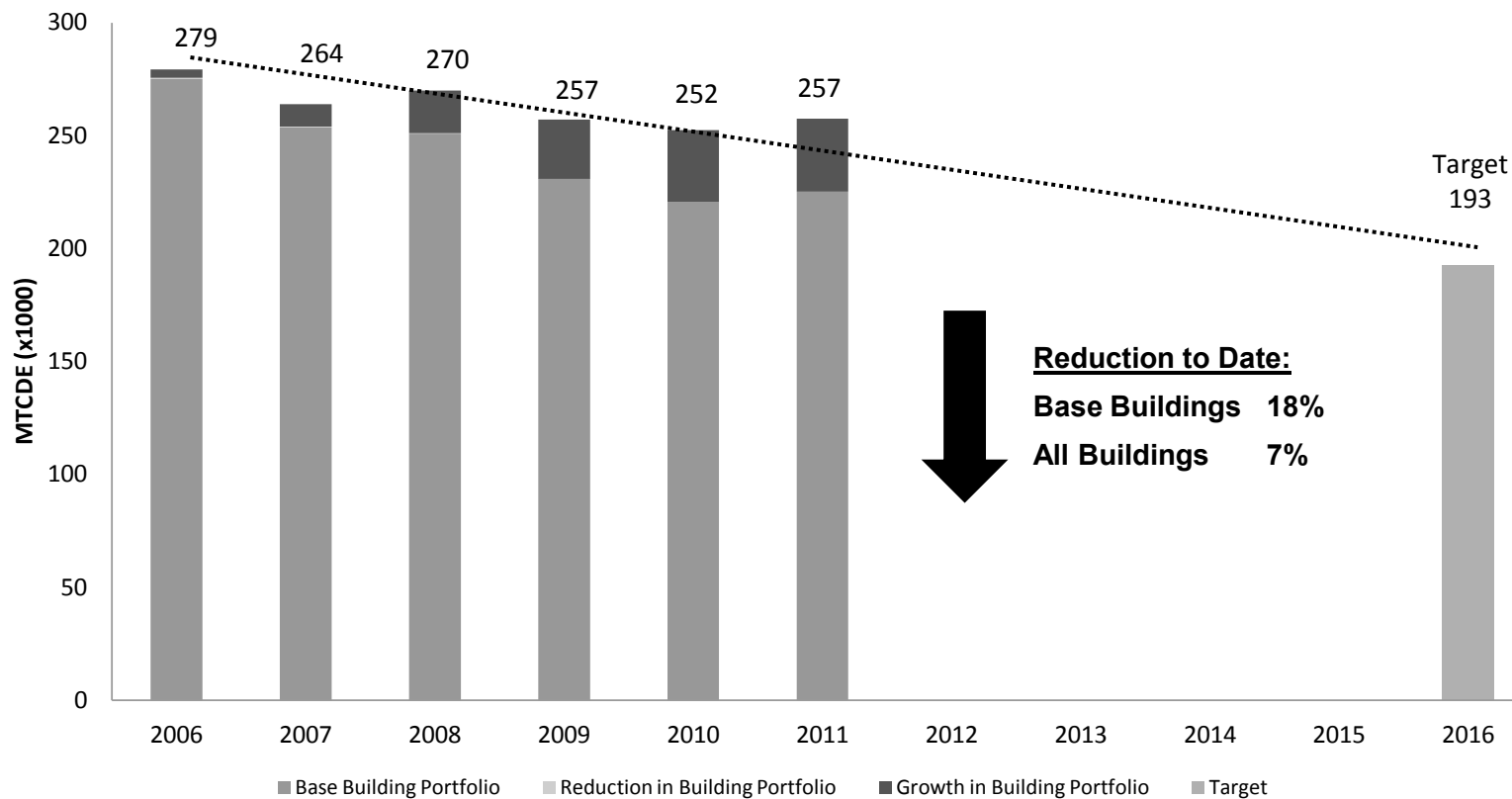
Adjustments to these emissions associated with Harvard's use of biofuels, biomass, carbon uptake associated with the 3,500 acre Harvard Forest and renewable energy purchases and on-site generation have not been made.

Additional GHG Inventory Reporting information can be found at [www.green.harvard.edu/reporting](http://www.green.harvard.edu/reporting).

\* Schools include buildings that are not on the central utility plant and therefore do not see the benefits of emissions reductions associated with central utilities.

### Harvard University Greenhouse Gas Emissions: FY2006 - FY2011 <sup>(3)</sup>

Expressed in thousands of MTCDE



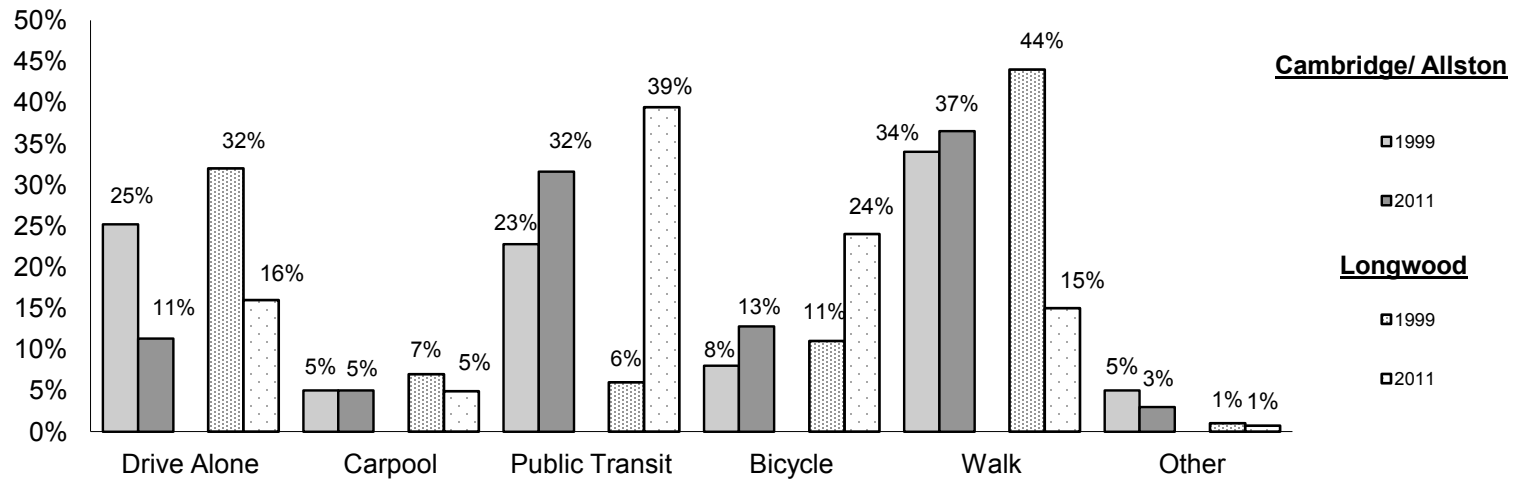
(1) MTCDE: Metric Tons of Carbon Dioxide Equivalent.

(2) HRES refers to Harvard Real Estate Services and UOS refers to University Operations Services.

(3) Emission for FY2006 through FY2009 have been restated based on the new methodology being followed. All North America Campuses are included.

SOURCE: HARVARD OFFICE FOR SUSTAINABILITY AND ENVIRONMENTAL HEALTH AND SAFETY

## Commute Trends: FY1999 - FY2011



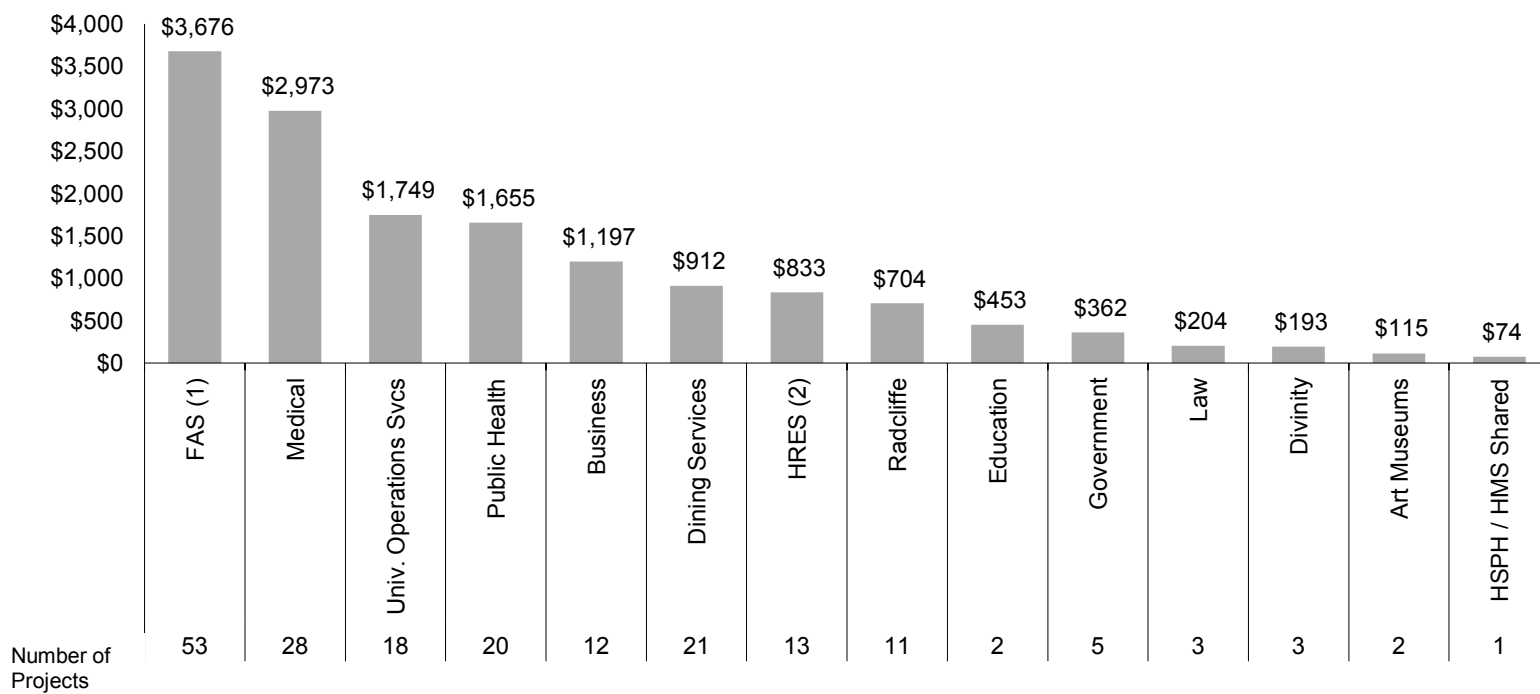
Cambridge Commute Type data is from UOS, Transportation Services Department.  
 Longwood Commute Data is from the Harvard Medical School Parking Office.

## Green Campus Loan Fund: FY2003 - FY2011

The Green Loan Fund is a revolving \$12 million fund that provides capital for high performance campus design, operations, maintenance and occupant behavior projects. Project eligibility guidelines state that projects must reduce the University's environmental impacts and meet specific payback requirements. Additional information can be found at [green.harvard.edu/loan-fund](http://green.harvard.edu/loan-fund).

## Total Amount Loaned per Faculty: FY2002 - FY2011\*

Expressed in thousands of dollars



\* Total amount loaned FY2002 - FY2011 is \$15,098,485. This number includes all open, pending and closed loans.

(1) FAS refers to Faculty of Arts and Sciences.

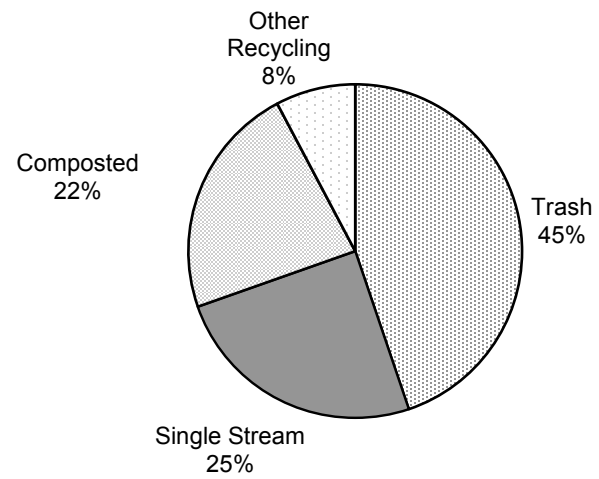
(2) HRES refers to Harvard Real Estate Services.

SOURCE: HARVARD OFFICE FOR SUSTAINABILITY

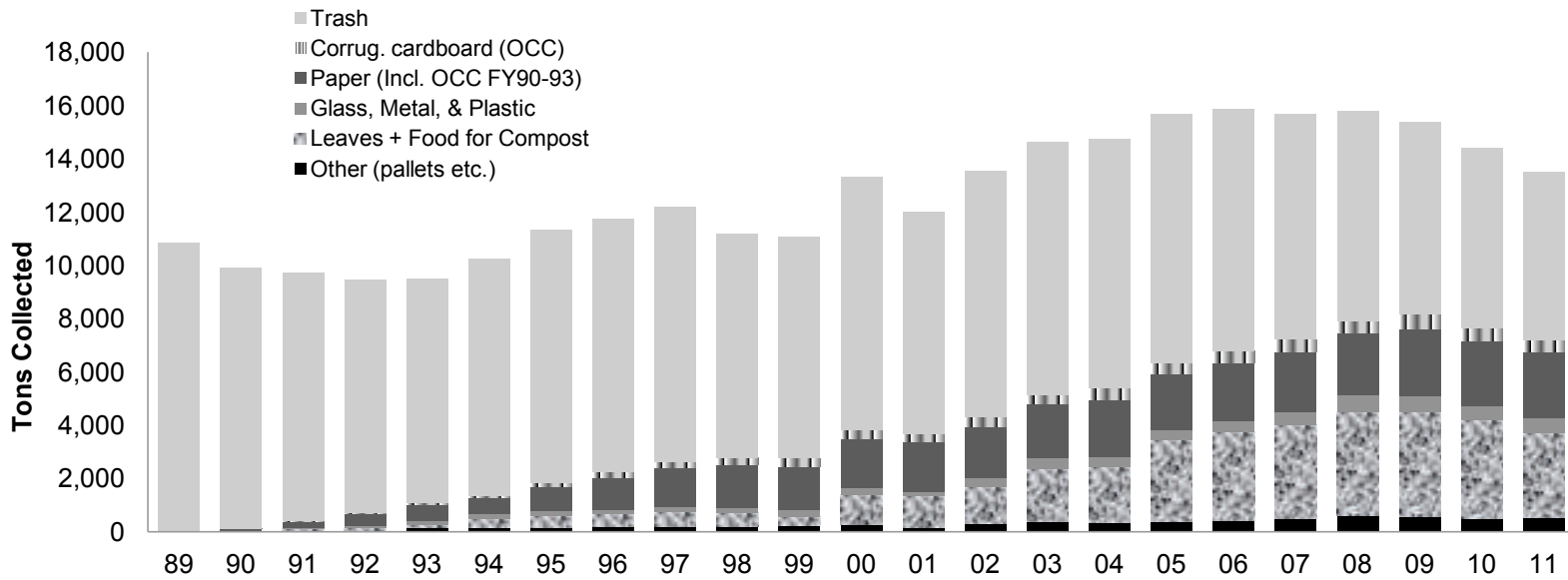
**Waste and Recycling: FY2011**

	Recycling Rate	Trash (in tons)
Faculty of Arts and Sciences	49%	2772
SEAS <sup>(1)</sup>	63%	40
Business	61%	588
Design	67%	59
Divinity	66%	13
Education	61%	37
Government	31%	196
Law	57%	220
Radcliffe	48%	98
Medical & Dental	49%	706
Public Health	77%	240
HRES <sup>(2)</sup>	45%	287
Libraries	59%	79
Museums	72%	14
Other: UOS, UIS, HU Press	60%	579
<b>Average Recycling Rate</b>	<b>55%</b>	

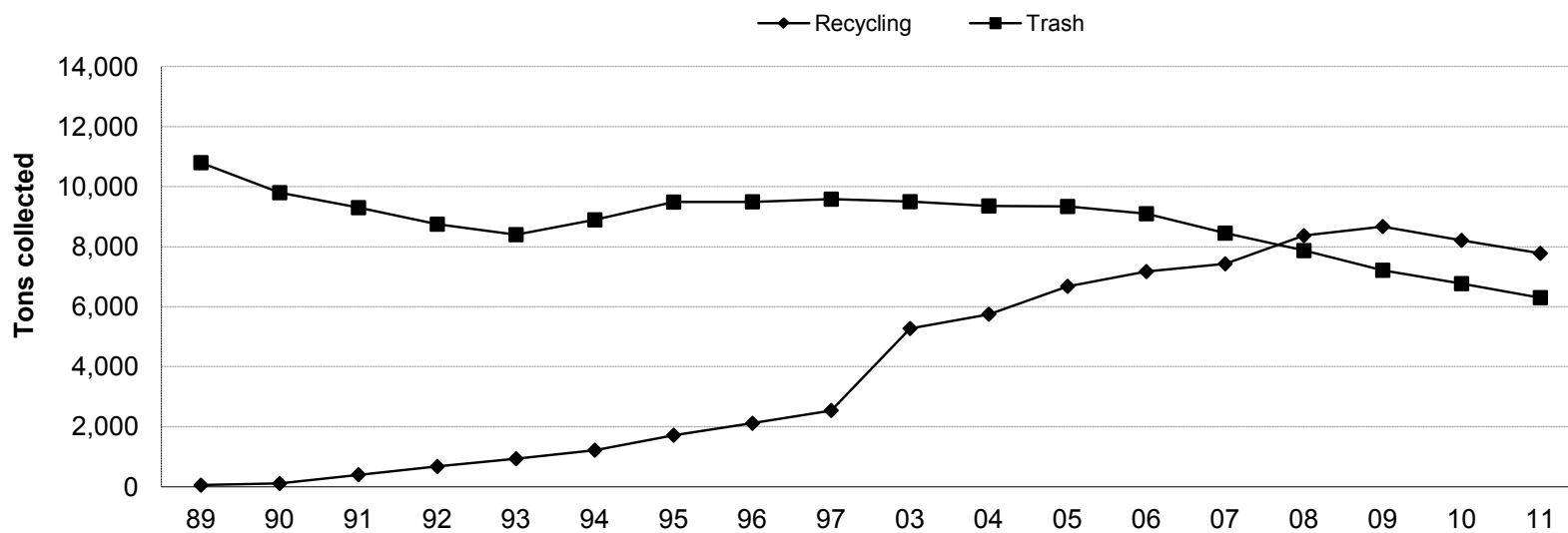
**Harvard University Refuse: FY2011**



**Harvard University Refuse: FY1989 - FY2011**



**Harvard University Trash and Recycling: FY1989 - FY2011**



(1) SEAS refers to Engineering and Applied Sciences.

(2) Harvard Real Estate Services recycling/trash data collected for University and Commercial Real Estate only. Does not include Residential Real Estate properties.

SOURCE: HARVARD OFFICE FOR SUSTAINABILITY AND UNIVERSITY OPERATIONS SERVICES

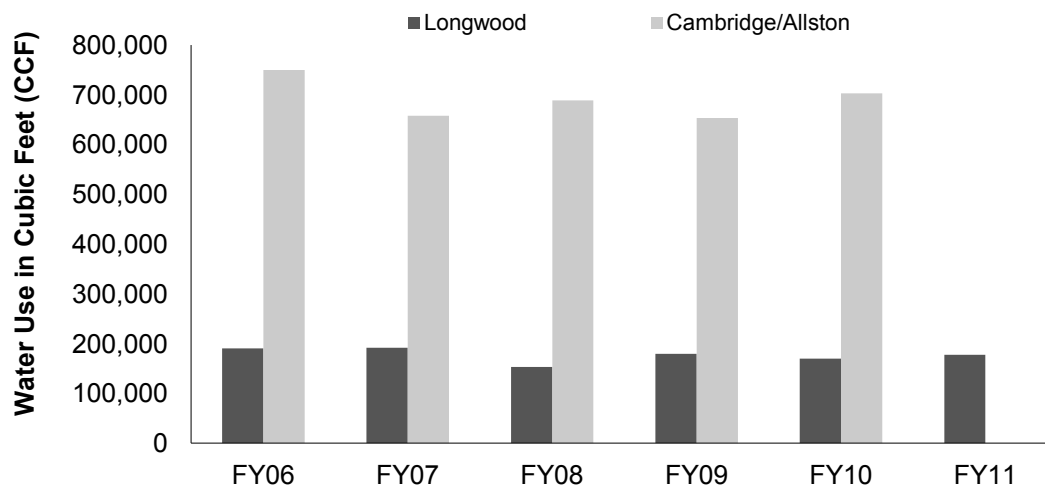
Solid Waste and Recycling data for Cambridge and Allston was reported by UOS, Solid Waste and Recycling Department.

Solid Waste and Recycling data for the Longwood campus was reported by the HMS and HSPH Operations Departments.

## Water Use in Cubic Feet (CCF): FY2011

	Water Use (CCF)	Per 1,000 Sq Ft	% Change Total Water Use (CCF) FY10-11
Arts and Sciences	216,455	23	-9%
Engineering and Applied Sciences	5,061	15	25%
Business	49,420	32	-33%
Design	1,710	10	7%
Divinity	2,889	15	10%
Education	3,324	13	7%
Government	5,187	20	-45%
Law	18,591	16	-1%
Radcliffe	2,837	10	0%
Medical (including Dental)	156,530	58	8%
Public Health	21,074	27	-18%
Harvard Real Estate/Harvard Housing	n/a	n/a	n/a
Other	114,344	n/a	-18%
<b>TOTAL</b>	<b>597,422</b>	<b>n/a</b>	<b>-32%</b>

## Water Use: FY2006 - FY2011



Cambridge & Allston data is from the University Operations Services Utility Reports. FY11 data for Harvard Real Estate was not

Harvard Medical School and Dental School data is reported by HMS Facilities Operations.

Harvard School of Public Health data is reported by HSPH Facilities Operations.

SOURCE: HARVARD OFFICE FOR SUSTAINABILITY AND UNIVERSITY OPERATIONS SERVICES

## Leadership in Energy and Environmental Design (LEED) Projects as of FY2011

### Registered LEED Projects by School/Department

	Gross Sq Footage
Allston	1,100,000
Arnold Arboretum	45,000
Art Museum	132,310
Business	205,382
Campus Services	46,052
Engineering and Applied Sciences	37,534
Faculty of Arts and Sciences	341,866
Government	15,385
Harvard Management Company	66,101
Law	518,783
Library	126,899
Mass High Performance Computing Center	89,000
Medical	135,277
Public Health	2,387
Radcliffe	20,569
<b>Total Registered LEED</b>	<b>2,882,545</b>

*LEED is a rating system for green buildings and provides a nationally accepted third-party verification that a building project meets the highest performance standards.*

*LEED Certified: The project has been third-party certified to meet the US Green Building Council LEED Standards.*

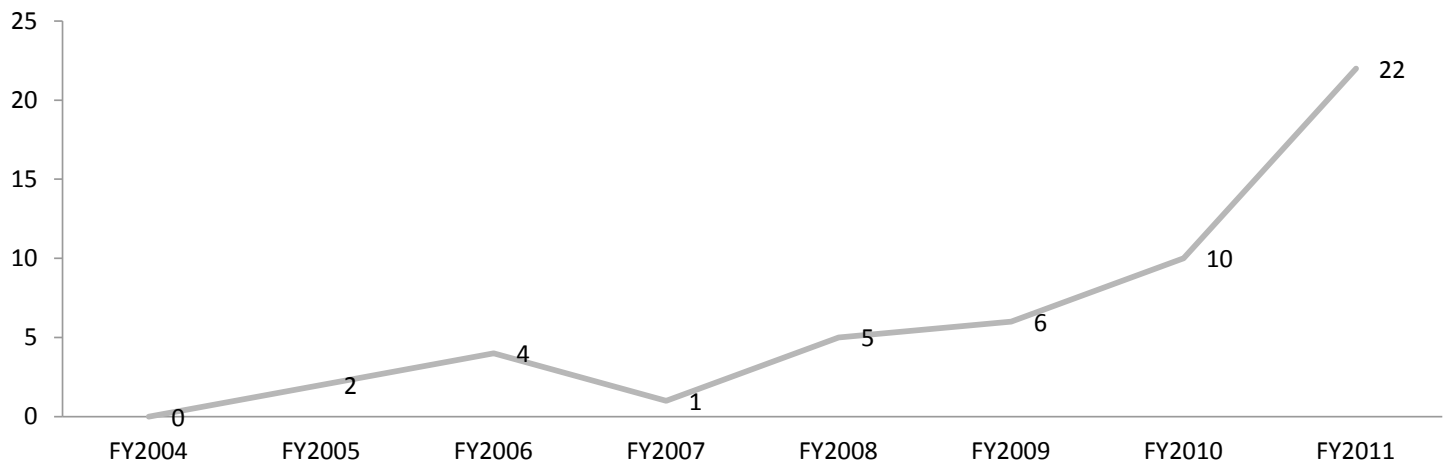
*LEED Registered: The project has registered for LEED Certification, but is not yet verified.*

*As of the end of FY11, Harvard had a total of 50 certifications and 42 registrations. There were 22 new certifications and 14 new registrations in FY11.*

### Certified LEED Projects by School/Department

	Gross Sq Footage
<b>Platinum</b>	
Business	35,127
Campus Services	44,041
Education	7,006
HRES <sup>(1)</sup>	1,000
Law	2,078
<b>Gold</b>	
Business	122,611
Divinity	26,715
Education	1,974
Engineering and Applied Sciences	2,003
Faculty of Arts and Sciences	73,857
Harvard Real Estate Services	345,317
Law	56,542
Medical	26,842
Radcliffe	41,851
<b>Silver</b>	
Business	102,825
Education	8,100
Faculty of Arts and Sciences	96,706
Government	6,019
Harvard Credit Union	6,826
Harvard Real Estate Services	229,000
Law	10,276
Misc.	66,101
<b>Certified</b>	
Faculty of Arts and Sciences	1,850
HRES <sup>(1)</sup>	40,012
HRES <sup>(1)</sup> /University Information Systems	93,923
Public Health	42,000
Radcliffe	25,988
<b>Total Certified LEED</b>	<b>1,516,590</b>
<b>Total Registered and Certified LEED</b>	<b>4,399,135</b>

### Harvard LEED Certified Projects: FY2004 - FY2011

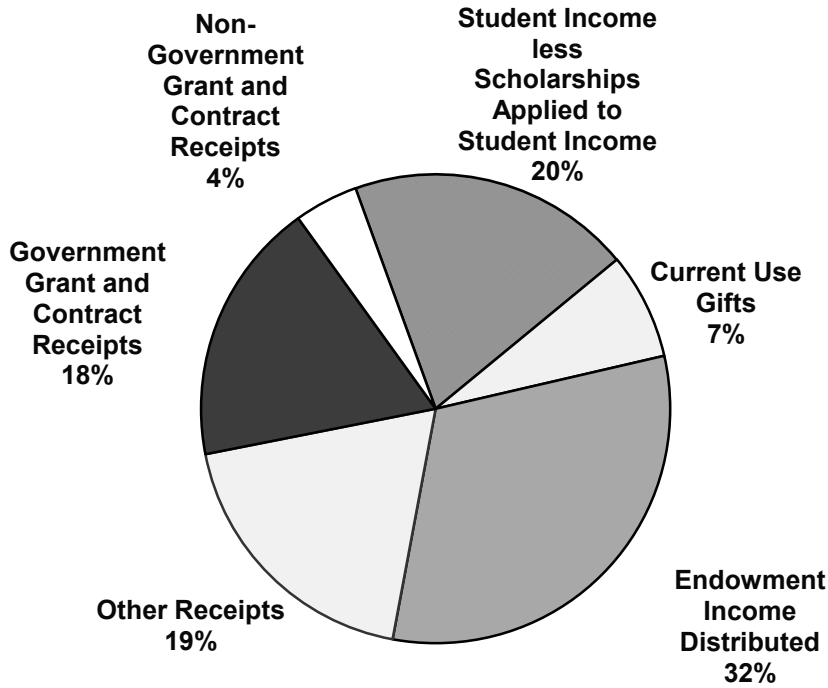


(1) HRES refers to Harvard Real Estate Services.

SOURCE: HARVARD OFFICE FOR SUSTAINABILITY

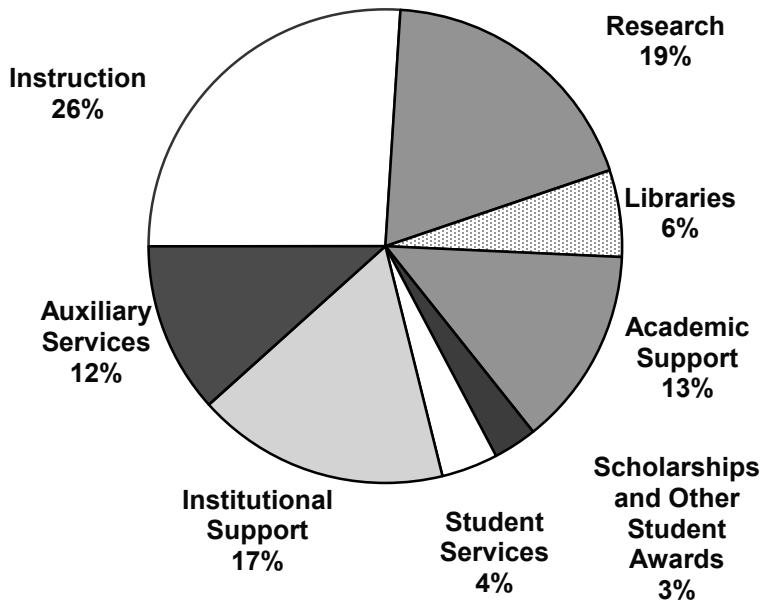
**Total University Income and Expenses for Fiscal Year Ended June 30, 2011**  
Expressed in thousands of dollars

**Total Income: \$3,777,746**



**Total Expenses: \$3,907,568**

(scholarship item excludes \$335 million in scholarships applied to student income)





## Departmental Operating Expenses Year Ended June 30, 2011

Expressed in thousands of dollars

	Salaries and Wages	Employee Benefits	Scholarships/ Student Awards
<b>Faculty of Arts and Sciences</b>			
Faculty of Arts and Sciences	350,931	110,753	239,283
Division of Continuing Education	26,107	7,104	8,020
FAS Museums	12,131	5,055	1,403
<b>Total Faculty of Arts and Sciences</b>	<b>\$389,169</b>	<b>\$122,912</b>	<b>\$248,706</b>
<b>Engineering and Applied Sciences</b>	40,248	11,049	8,613
<b>Business</b>	166,608	51,396	35,087
<b>Dental</b>	13,349	4,902	2,189
<b>Design</b>	16,761	5,263	10,679
<b>Divinity</b>	13,673	4,534	9,068
<b>Education</b>	37,308	12,905	12,633
<b>Government</b>	61,740	21,908	21,610
<b>Law</b>	69,753	22,747	27,148
<b>Medical</b>	182,005	66,224	48,475
<b>Radcliffe</b>	7,552	3,013	2,909
<b>Public Health</b>	102,776	36,773	17,904
<b>Other Faculties Subtotal</b>	<b>\$711,773</b>	<b>\$240,714</b>	<b>\$196,315</b>
<b>Total Faculties</b>	<b>\$1,100,942</b>	<b>\$363,626</b>	<b>\$445,021</b>
<b>Arnold Arboretum</b>	4,147	1,760	29
<b>Harvard University Art Museums</b>	9,424	4,122	13
<b>Joint Center for Housing Studies</b>	966	421	27
<b>Nieman Foundation</b>	1,507	662	1,578
<b>Villa I Tatti</b>	3,660	1,180	1,232
<b>Other Academic Departments Subtotal</b>	<b>\$19,704</b>	<b>\$8,145</b>	<b>\$2,879</b>
<b>Service Departments</b>	130,211	50,157	926
<b>Memorial Church</b>	1,077	424	1
<b>Central Administration <sup>(2)</sup></b>	168,089	38,658	2,719
<b>TOTAL UNIVERSITY EXPENSES</b>	<b>\$1,420,023</b>	<b>\$461,010</b>	<b>\$451,546</b>

(1) Includes expense credits and transfers.

(2) Includes Harvard University Library and other University funds.

SOURCE: OFFICE OF THE CONTROLLER

Less: Financial Aid Applied against Income	Equipment and Supplies	Space and Occupancy	Interest	Depreciation	Other Expenses <sup>(1)</sup>	Total Expenses
(189,636)	51,749	120,913	49,644	104,132	137,857	\$975,626
(7,751)	1,170	2,729	159	920	17,044	55,503
(125)	2,159	3,225	-	1,009	6,914	31,771
<b>(\$197,512)</b>	<b>\$55,078</b>	<b>\$126,868</b>	<b>\$49,803</b>	<b>\$106,061</b>	<b>\$161,815</b>	<b>\$1,062,900</b>
(6,265)	6,362	6,421	2,763	9,477	18,011	96,679
(28,214)	9,924	30,438	5,934	27,586	149,340	448,099
(1,907)	2,956	2,647	1,496	2,008	6,916	34,555
(9,259)	1,701	3,298	318	891	7,574	37,226
(7,337)	755	2,085	808	1,536	4,094	29,216
(10,339)	2,790	6,404	361	777	22,112	84,951
(15,374)	6,163	11,663	1,397	3,176	26,602	138,886
(20,563)	5,562	12,015	4,771	5,867	41,097	168,398
(27,993)	46,715	57,775	22,900	45,786	196,415	638,303
(10)	502	878	415	2,042	3,335	20,635
(9,877)	23,586	26,295	3,634	6,911	131,413	339,415
<b>(\$137,138)</b>	<b>\$107,016</b>	<b>\$159,919</b>	<b>\$44,797</b>	<b>\$106,058</b>	<b>\$606,909</b>	<b>\$2,036,363</b>
<b>(\$334,650)</b>	<b>\$162,094</b>	<b>\$286,787</b>	<b>\$94,600</b>	<b>\$212,119</b>	<b>\$768,725</b>	<b>\$3,099,263</b>
-	637	1,295	241	1,602	2,589	\$12,300
-	3,917	4,215	1,100	1,796	7,381	31,968
-	37	164	-	-	504	2,119
-	60	178	31	8	1,231	5,254
-	888	841	-	365	2,240	10,406
-	<b>\$5,539</b>	<b>\$6,692</b>	<b>\$1,372</b>	<b>\$3,771</b>	<b>\$13,945</b>	<b>\$62,046</b>
-	52,739	(45,513)	43,359	49,670	42,012	<b>\$323,560</b>
-	44	706	55	71	412	<b>\$2,791</b>
(386)	13,239	23,182	159,457	15,396	(446)	<b>\$419,907</b>
<b>(\$335,036)</b>	<b>\$233,655</b>	<b>\$271,853</b>	<b>\$298,843</b>	<b>\$281,027</b>	<b>\$824,647</b>	<b>\$3,907,568</b>

## Endowment Performance, Fiscal Years 1981-2011

Fiscal Year	Year-end market value (in 000's)	Return <sup>(1)</sup>	Spending Rate <sup>(2)</sup>	Endowment Income as % of University Operating Revenue
1981	1,622,734	11.2%	5.2%	18.4%
1982	1,617,290	0.0%	5.1%	19.1%
1983	2,307,437	43.6%	5.8%	19.4%
1984	2,187,884	-3.8%	4.3%	19.0%
1985	2,694,802	26.8%	4.9%	18.1%
1986	3,435,006	31.3%	4.3%	17.5%
1987	4,018,269	19.9%	3.6%	17.1%
1988	4,155,778	5.7%	3.3%	17.2%
1989	4,478,976	12.8%	3.9%	18.9%
1990	4,760,284	7.5%	3.8%	17.9%
1991	4,708,407	1.1%	4.2%	18.1%
1992	5,118,118	11.8%	4.5%	18.4%
1993	5,778,257	16.8%	4.8%	19.9%
1994	6,201,220	9.8%	4.5%	20.6%
1995	7,045,863	16.8%	4.6%	20.9%
1996	9,117,945	26.0%	4.3%	20.5%
1997	11,161,761	25.8%	4.1%	21.2%
1998	13,278,938	20.5%	3.7%	23.5%
1999	14,535,675	12.2%	3.3%	23.5%
2000	19,148,288	32.2%	4.0%	27.5%
2001	18,259,199	-2.7%	3.3%	27.6%
2002	17,518,021	-0.5%	4.8%	31.9%
2003	19,294,735	12.5%	5.2%	31.2%
2004	22,587,305	21.1%	4.9%	31.1%
2005	25,853,048	19.2%	4.5%	30.5%
2006	29,219,430	16.7%	4.2%	31.1%
2007	34,912,100	23.0%	4.6%	32.5%
2008	36,926,693	8.6%	4.8%	34.5%
2009 <sup>(3)</sup>	26,138,239	-27.3%	4.5%	37.2%
2010 <sup>(3)</sup>	27,565,029	11.0%	6.1%	35.3%
2011	\$32,012,729	21.4%	5.3%	31.6%

### Compound Annual Growth Rates and Average Rates of Return

Term	Growth	Return
30 YEAR	10.5%	13.7%
20 YEAR	10.1%	13.7%
10 YEAR	5.8%	10.6%
5 YEAR	1.8%	7.3%
1 YEAR	16.1%	-

(1) Total return percentage reported by the Harvard Management Company, based on reinvestment of all earnings on a monthly basis.

(2) Prior to FY 2004, the spending rate was based upon the per unit distribution rate established by the Corporation for each fiscal year. Starting in FY 2004, the spending rate based upon actual endowment distributions in combination with approved decapitalizations of endowment principal made during the fiscal year.

(3) Values have been recast to conform with more recent Annual Financial Reports

SOURCE: ANNUAL FINANCIAL REPORT AND INTERNAL REPORTS

## Market Value of Endowment Funds as of June 30, 2011

	Endowment Market Value	Market Value % of Total
Arts and Sciences(1)	\$13,517	42%
Medical	3,826	12%
Business	2,744	9%
Other Departments	2,729	9%
President's Funds	2,093	7%
Law	1,652	5%
Public Health	1,124	4%
Government (2)	1,002	3%
Engineering and Applied Sciences	875	3%
Divinity	556	2%
Radcliffe Institute for Advanced Study	546	2%
Education	482	2%
Design	386	1%
University Professorships	290	1%
Dental	190	1%
Total Endowment	\$32,012	100%

(1) Arts and Sciences includes: Continuing Education, College Library, FAS Museums, GSAS, Athletics, College Life and Student Services, and Dumbarton Oaks.

(2) Government includes Institute of Politics.

SOURCE: HARVARD ANNUAL FINANCIAL REPORT